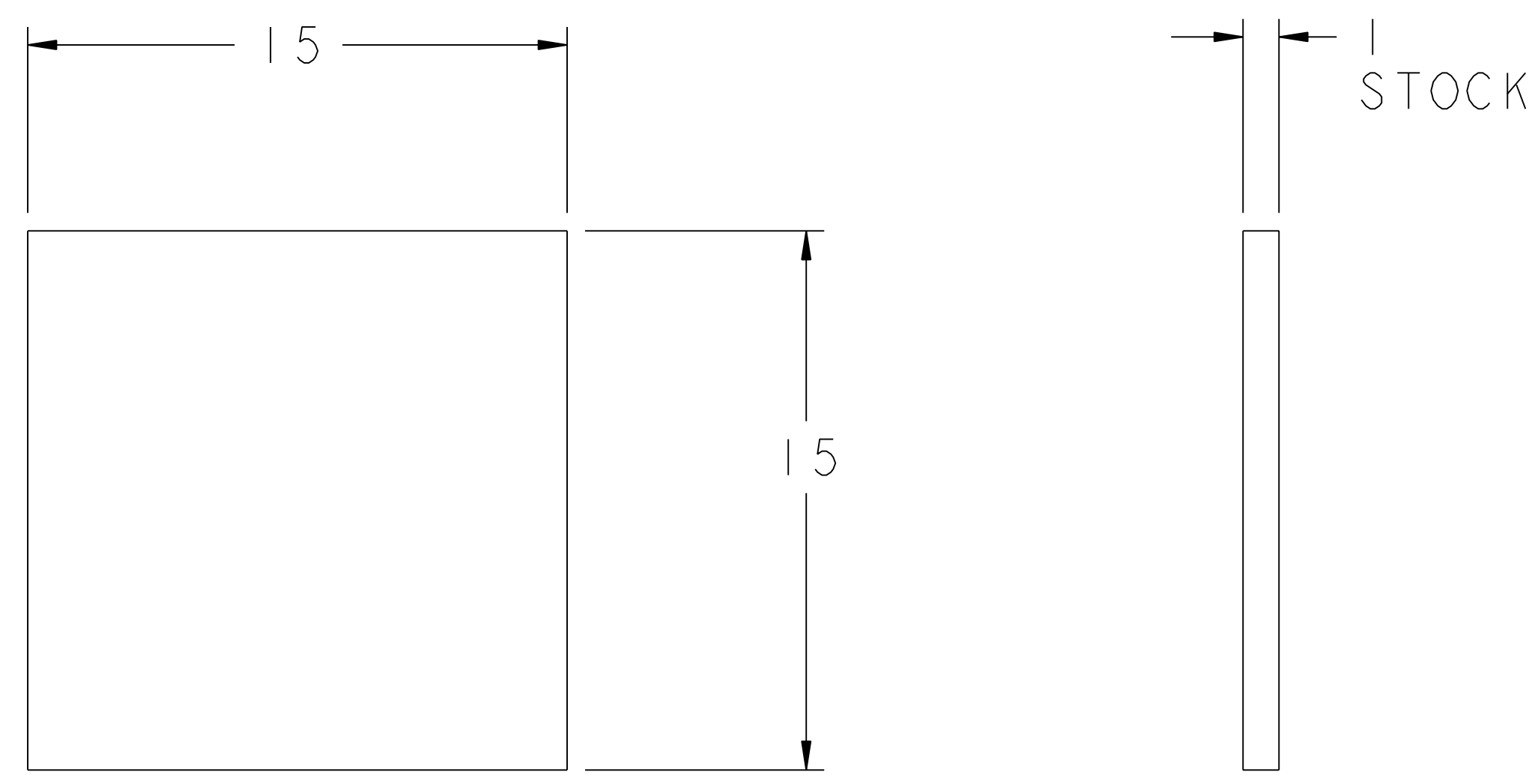
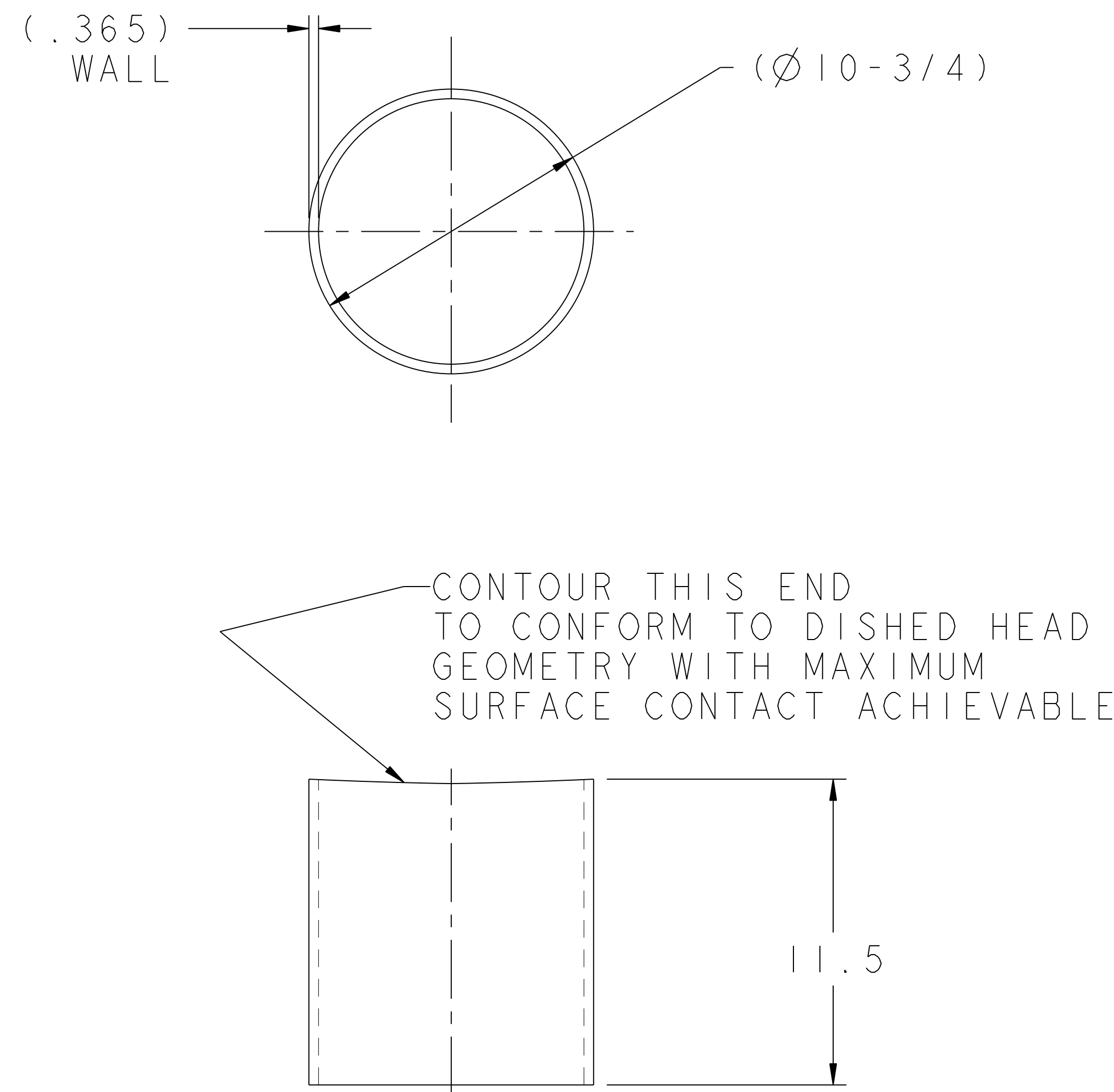


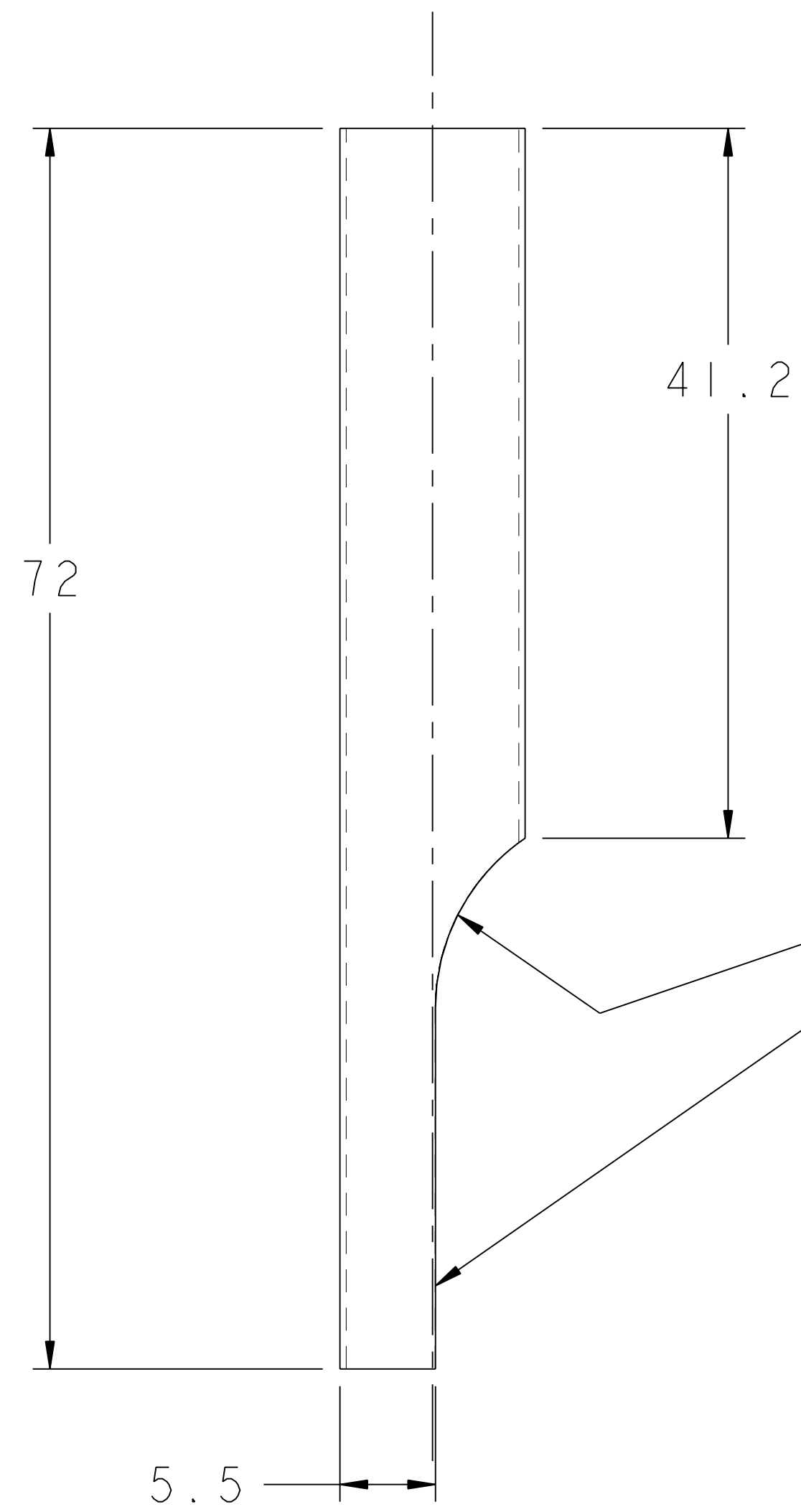
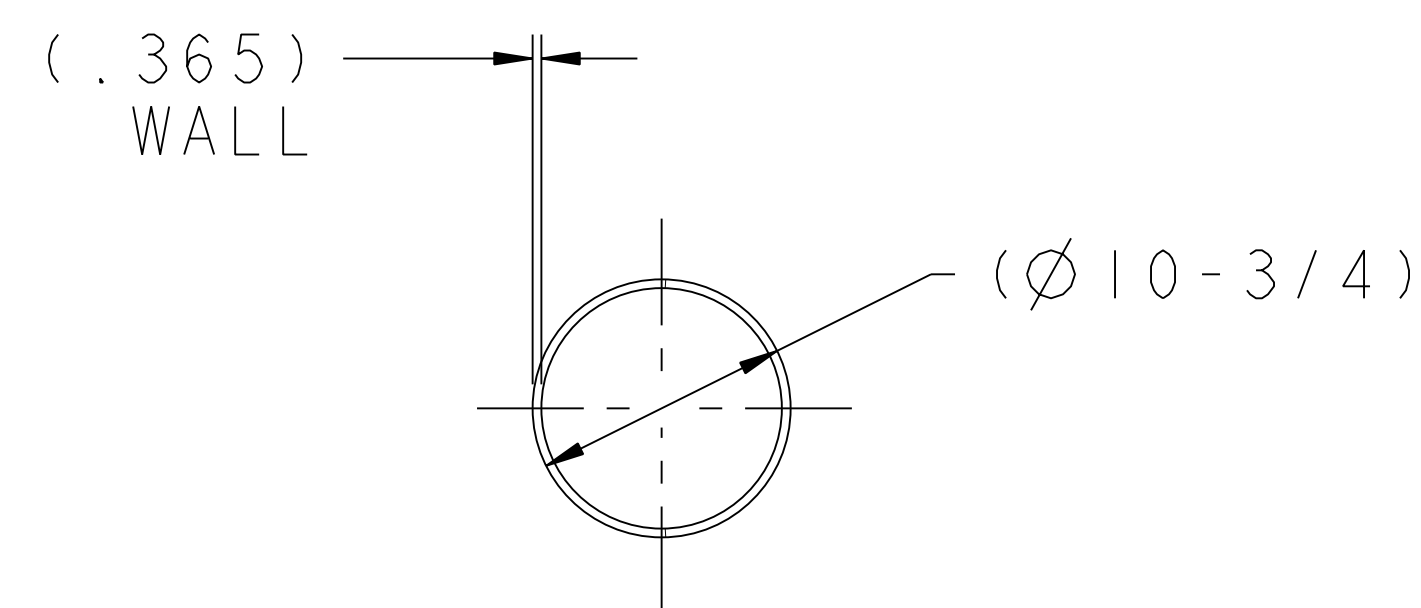
NO.	REVISION	BY	CH	SUP	APPROVED	DATE



2 **SUPPORT LEG PAD**
SCALE 0.250



1 **CENTER TANK LEG SUPPORT**
MAKE FROM 10" SCH #40 PIPE
SCALE 0.250



3 **TANK LEG SUPPORT**
MAKE FROM 10" SCH #40 PIPE

RELEASED FOR FABRICATION / INSTALLATION

3	SE144-332-3	SUPPORT LEG DETAIL	STN STL	6
2	SE144-332-2	SUPPORT LEG PAD	STN STL	7
1	SE144-332-1	EXTERNAL CENTER VESSEL SUPPORT LEG	STN STL	1
PART NO.	DRAWING NO	NOMENCLATURE OR DESCRIPTION	MATERIAL	QTY REOD
PARTS LIST				
COMPUTER GENERATED DRAWING MANUAL CHANGES NOT PERMITTED Pro E		CENTRAL FILES: UNLESS OTHERWISE SPECIFIED	PRINCETON PLASMA PHYSICS LABORATORY PRINCETON UNIVERSITY NATIONAL COMPACT STELLARATOR EXPERIMENT	
DO NOT VERIFY INFORMATION BY SCALING DRAWING		DIMENSIONS ARE IN INCHES MACHINE SURFACES BREAK SHARP EDGES .005/.020	STELLARATOR CORE MODULAR COIL WINDING FACILITY AUTOCLAVE TANK LEG SUPPORT LEG DETAILS	
NEXT ASSEMBLY		TOLERANCES NON-CUMULATIVE DECIMAL-INCH FRACTIONS .XX +/- .030 .XXX +/- .005 ANGULAR +/- .0°-15'	DSN: J. RUSHINSKI CHK: ENGR: S. RAFTOPOULOS SUPV:	DRAWING NO: SE144-332
RELEASE LEVEL: Fabrication DWG VERSION NO: 3		WELDING ENGINEER	SHEET 1 OF 1 REV 0	

WEIGHT

MODEL NAME
SE144-332

NCSX-SE144-332