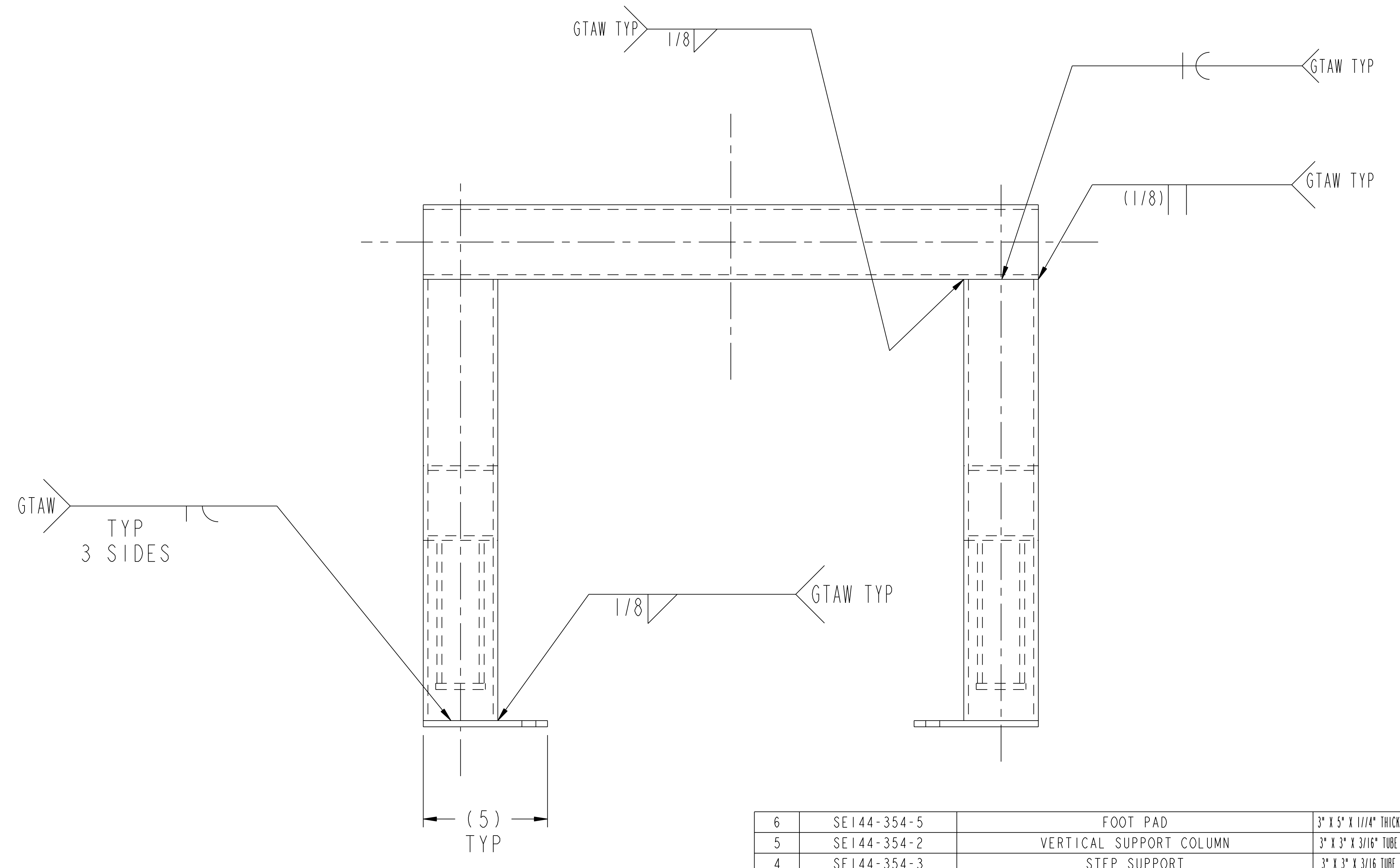
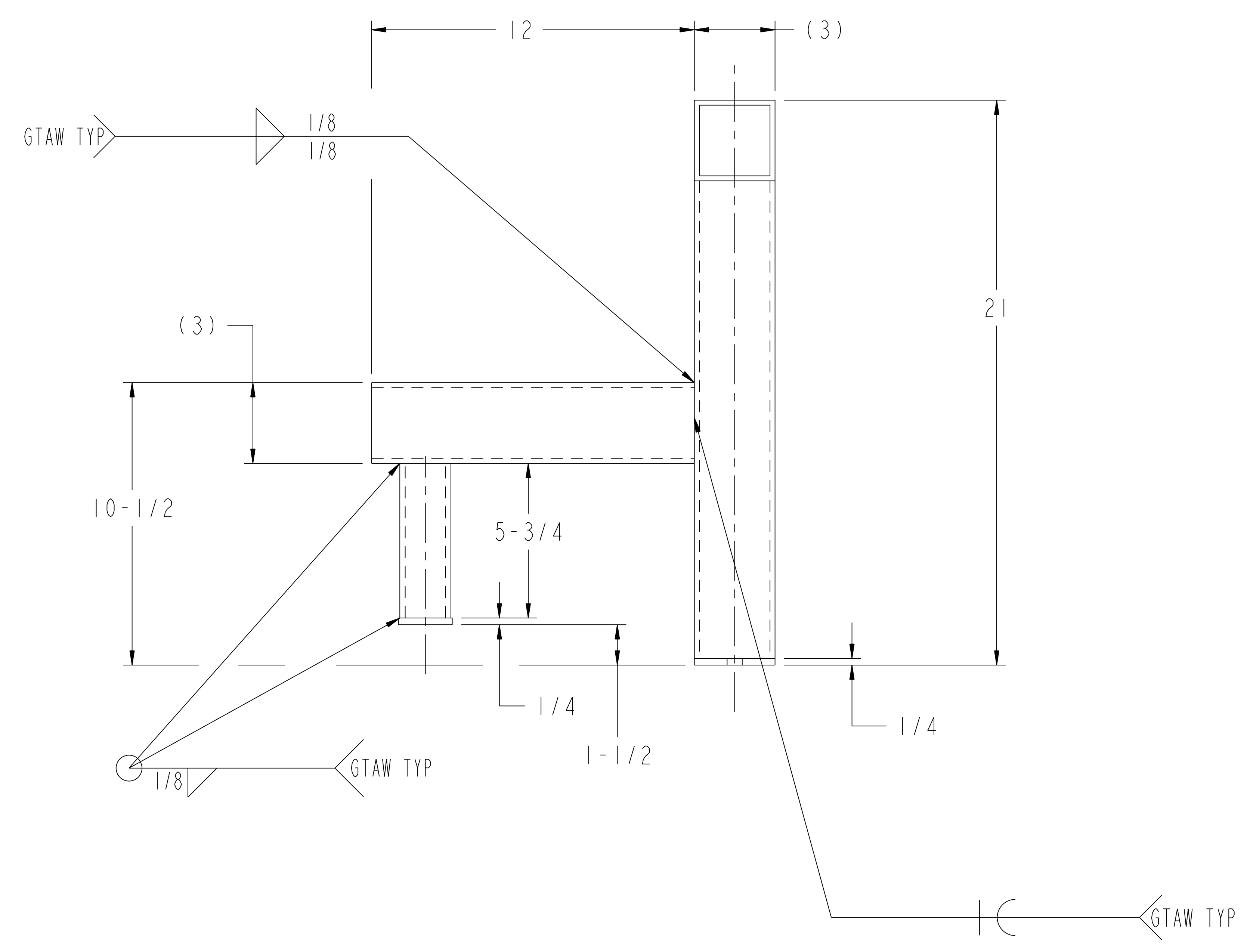
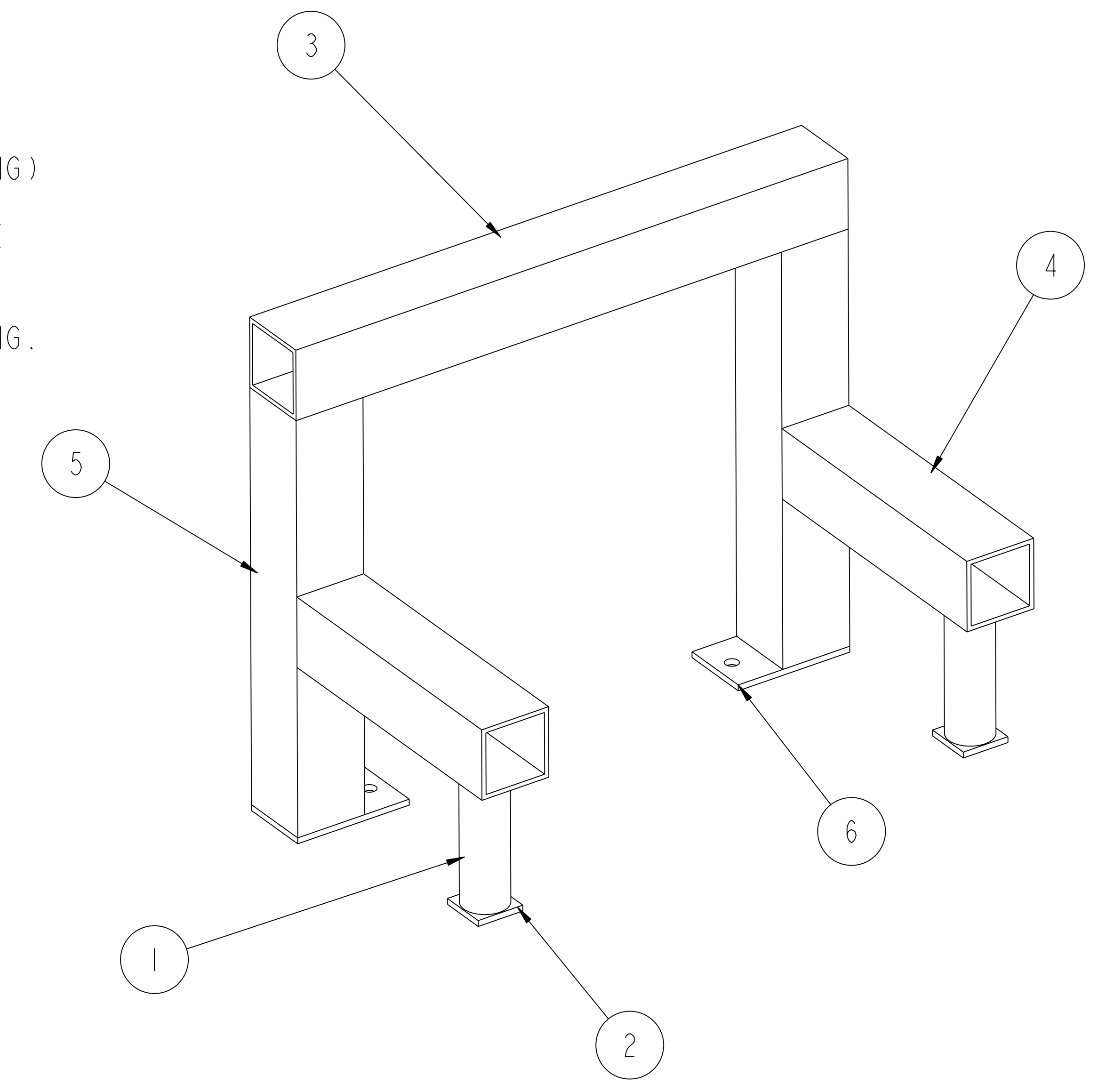


NOTE:

WELDING SHALL BE PERFORMED IN ACCORDANCE WITH THE REQUIREMENTS OF AWS D1.1 (STRUCTURAL CARBON & LOW ALLOY STEEL WELDING) AND PPPL PROCEDURE EM-002. VISUAL WELD INSPECTION SHALL BE PERFORMED IN ACCORDANCE WITH THE ACCEPTANCE CRITERIA OF AWS D1.1.

NOTE ORIENTATION OF ALL PARTS BEFORE WELDING.



RELEASED FOR FABRICATION / INSTALLATION
PPPL Drafting:

PART NO.	DRAWING NO	NOMENCLATURE OR DESCRIPTION	MATERIAL	QTY	REOD
6	SE144-354-5	FOOT PAD	3" X 5" X 1/16" THICK	2	
5	SE144-354-2	VERTICAL SUPPORT COLUMN	3" X 3" X 3/16" TUBE	2	
4	SE144-354-3	STEP SUPPORT	3" X 3" X 3/16" TUBE	2	
3	SE144-354-1	HORIZONTAL TOP BEAM	3" X 3" X 3/16" TUBE	1	
2	SE144-354-6	STEP FOOT PAD	2" X 2" X 1/4"	2	
1	SE144-354-4	VERTICAL STEP COLUMN	1 1/2" OD SCH 80 PIPE	2	

PARTS LIST					
COMPUTER GENERATED DRAWING	CENTRAL FILES:	PRINCETON PLASMA PHYSICS LABORATORY			
MANUAL CHANGES NOT PERMITTED	UNLESS OTHERWISE SPECIFIED	NATIONAL COMPACT STELLARATOR EXPERIMENT			
Pro E	DIMENSIONS ARE IN INCHES	STELLARATOR CORE			
DO NOT VERIFY INFORMATION BY SCALING DRAWING	BREAK SHARP EDGES .005/.020	MODULAR COIL WINDING FACILITY			
SCALE 0.375	TOLERANCES NON-CUMULATIVE	DSN: J. RUSHINSKI	DRAWING NO:		
NEXT ASSEMBLY	DECIMAL-INCH FRACTIONS	CHK: J. CHRZANOWSKI	SE144-354		
	.XX ±.000	ENGR: S. RAFTOPOULOS	SHEET 1 OF 1		
	.XXX ±.005	SUPV: J. SIEGEL	REV 0		
	ANGULAR ±.0°-15°		NCSX-ASSY-FORMAT.E		

WEIGHT: 57.7 lbs
MODEL NAME: SE144-354
RELEASE LEVEL: As Built
DWG VERSION NO:

NCSX-SE144-354