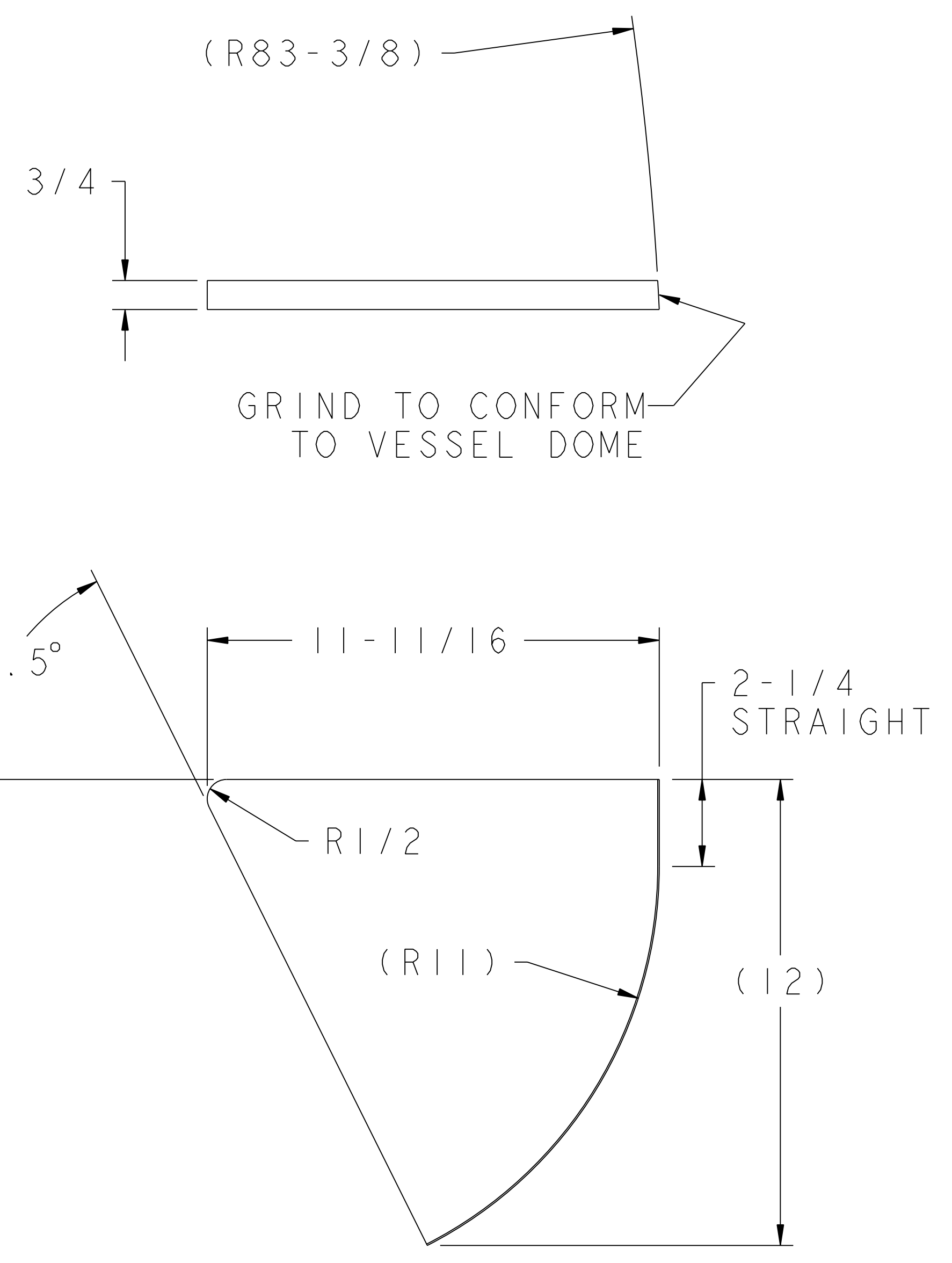
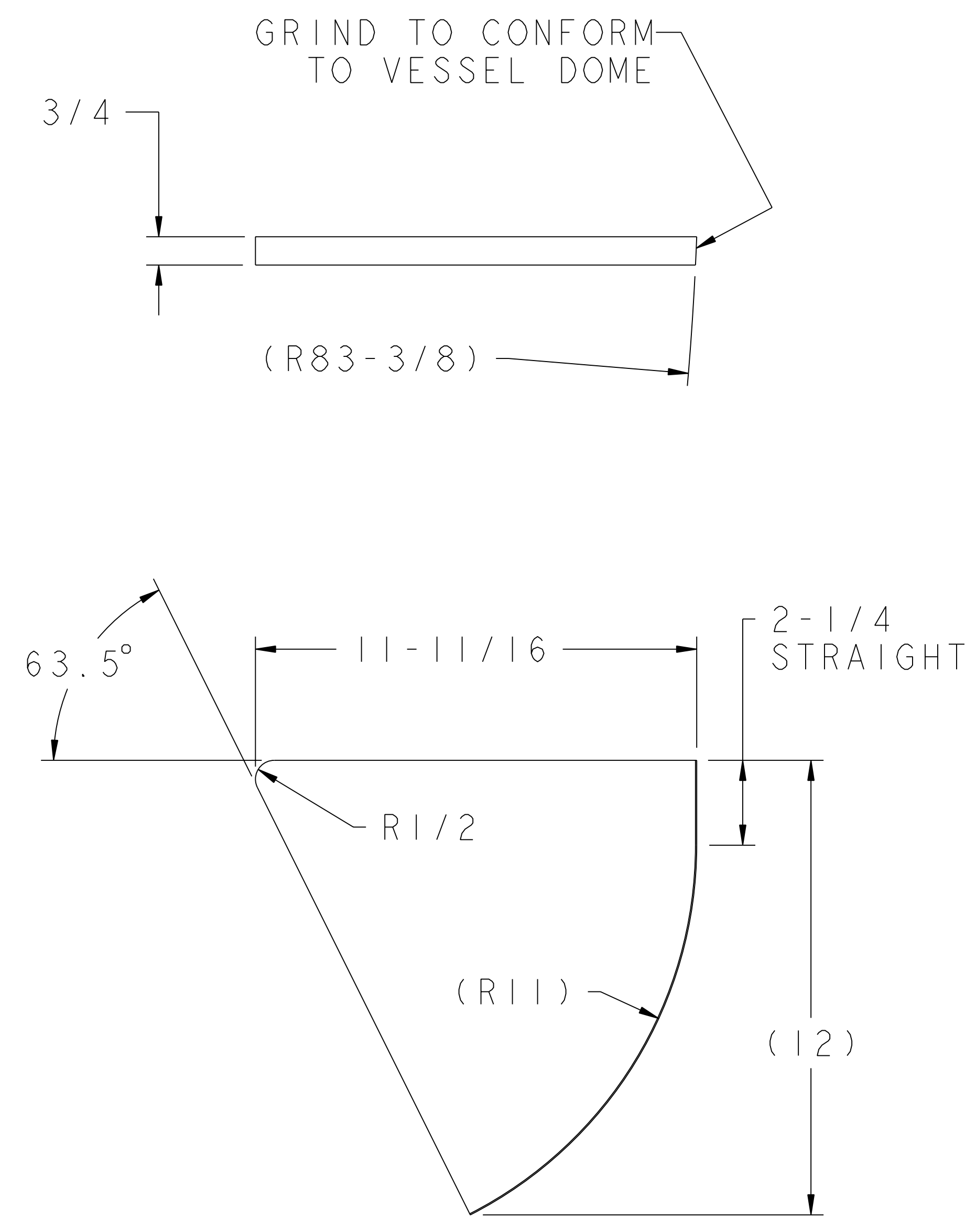


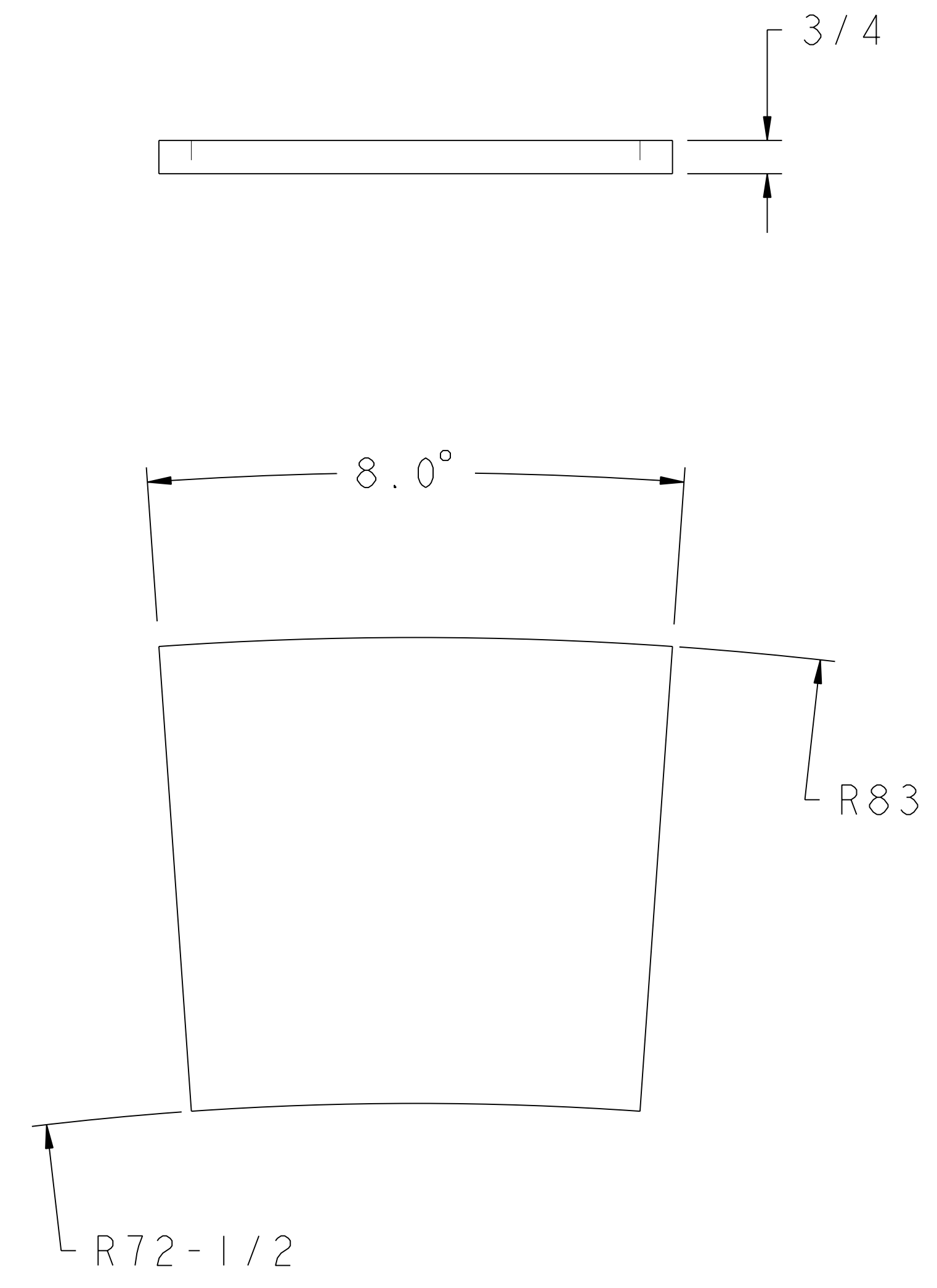
NO.	REVISION	BY	CH	SUP	APPROVED	DATE



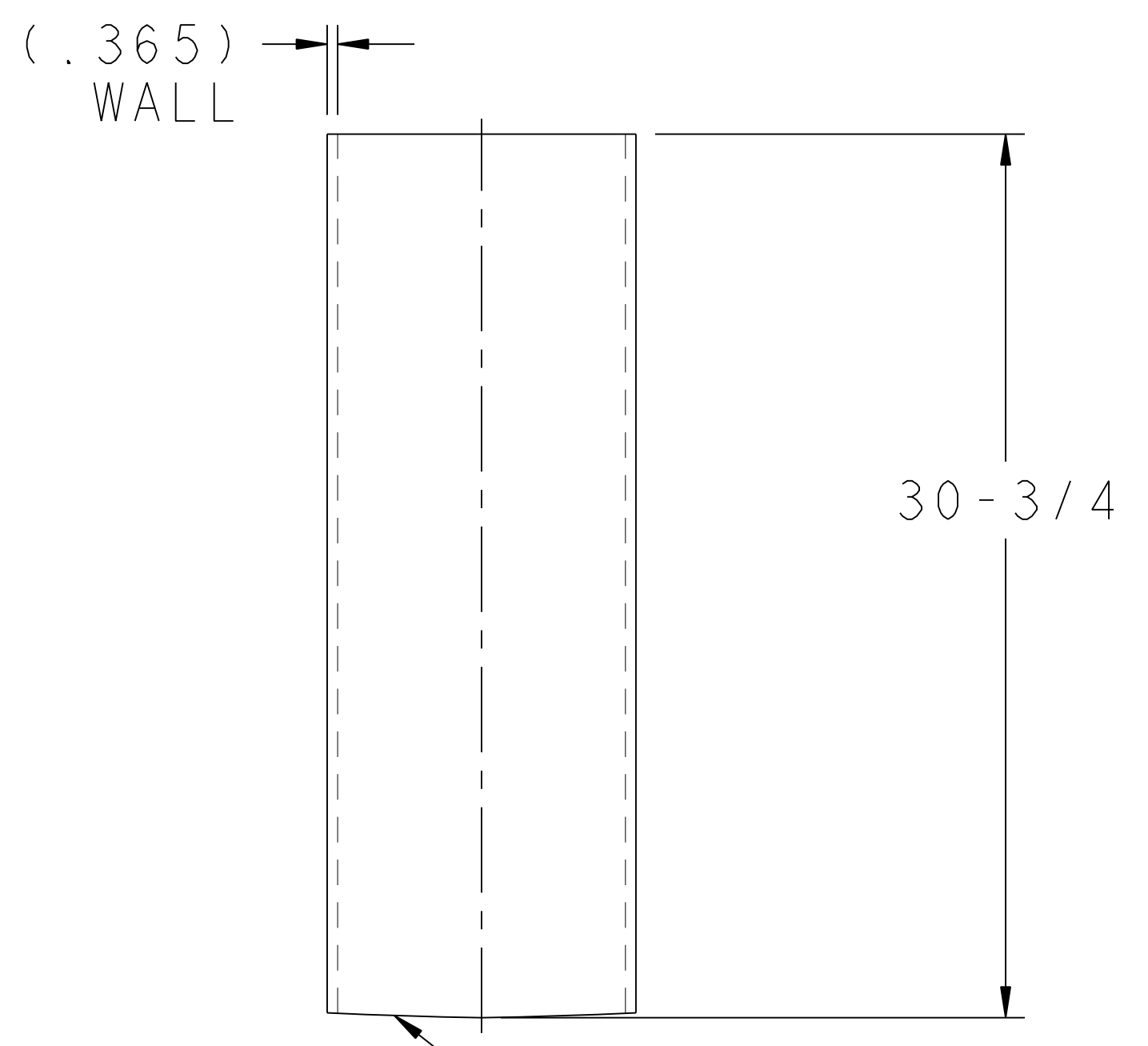
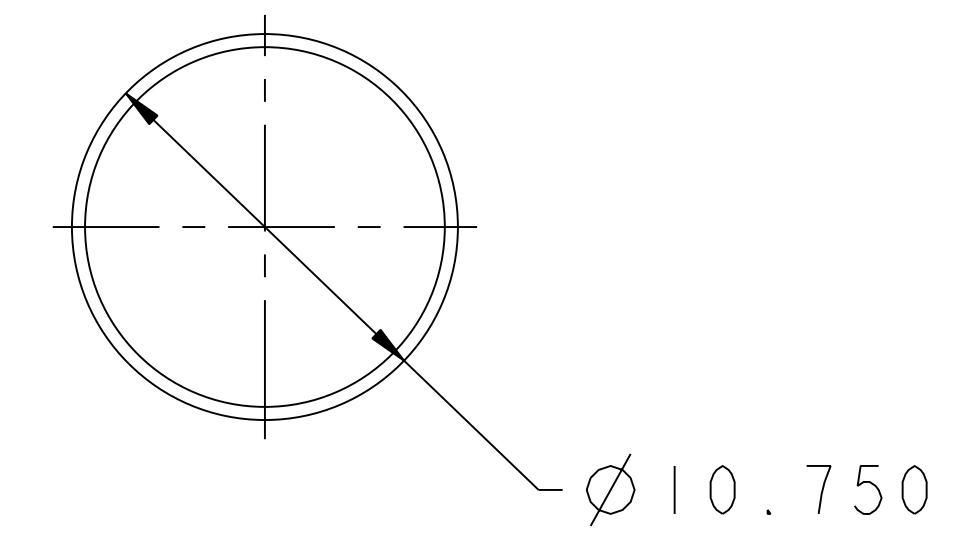
① **GUSSET LEFT**
SCALE 0.375



② **GUSSET RIGHT**
SCALE 0.375

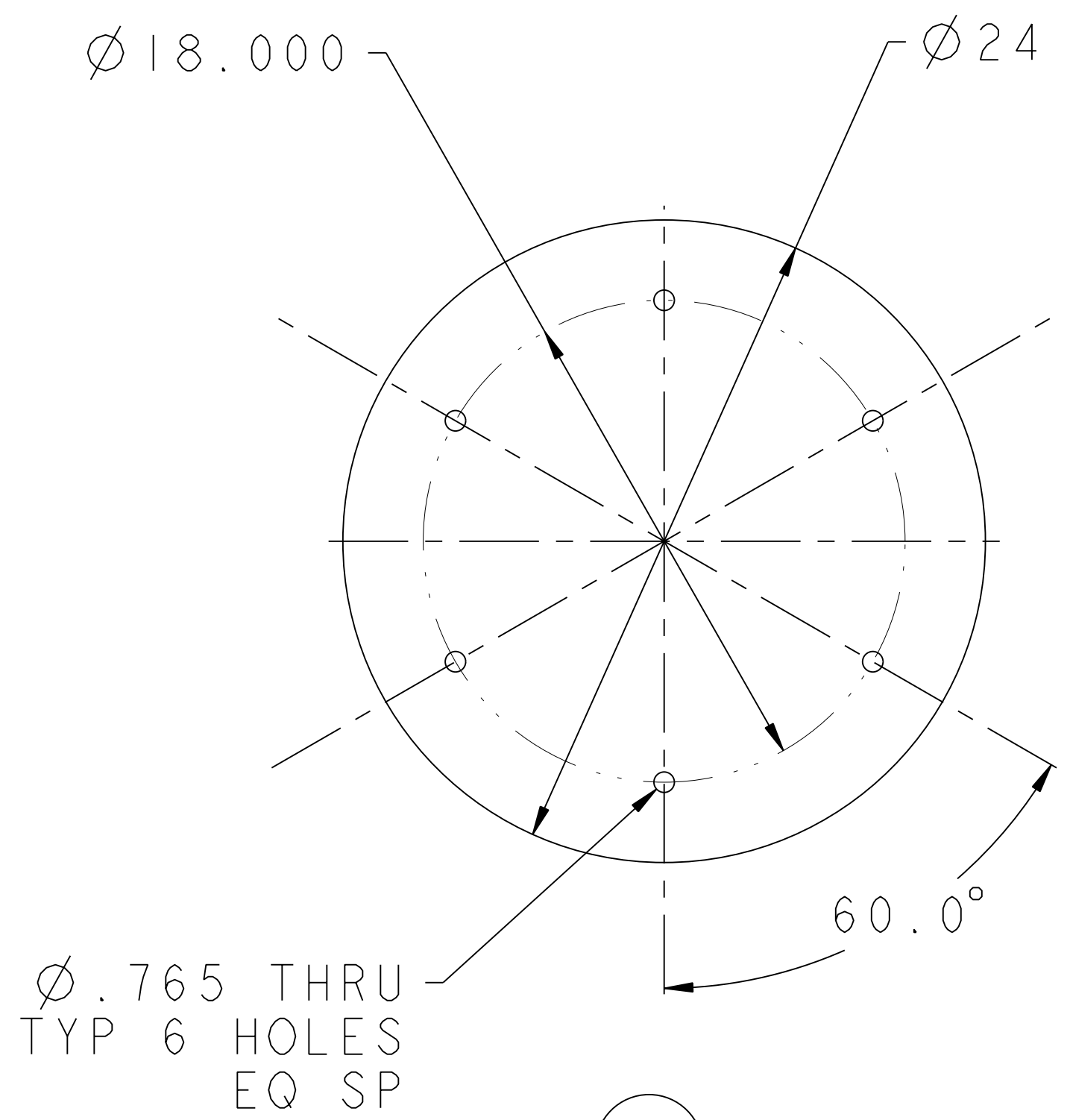
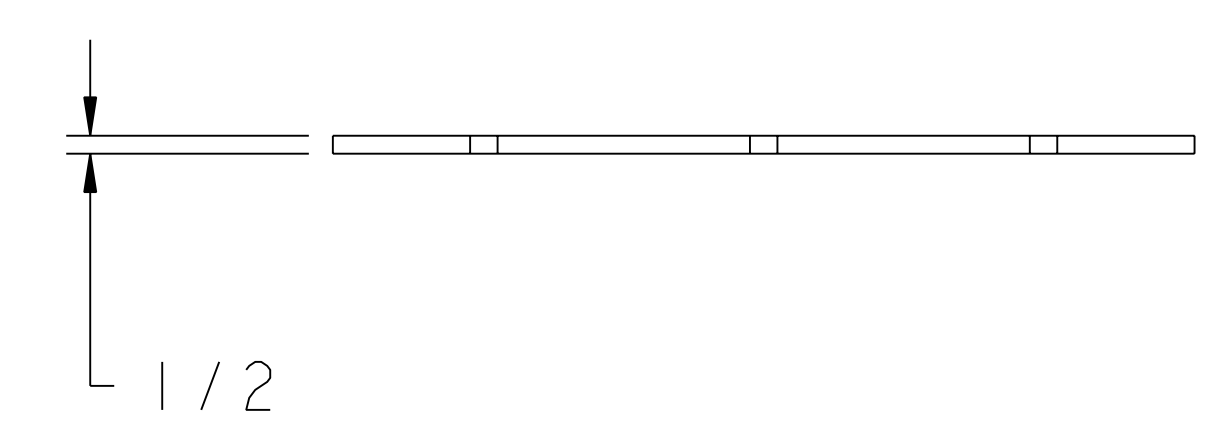


③ **GUSSET TIE PLATE**
SCALE 0.375

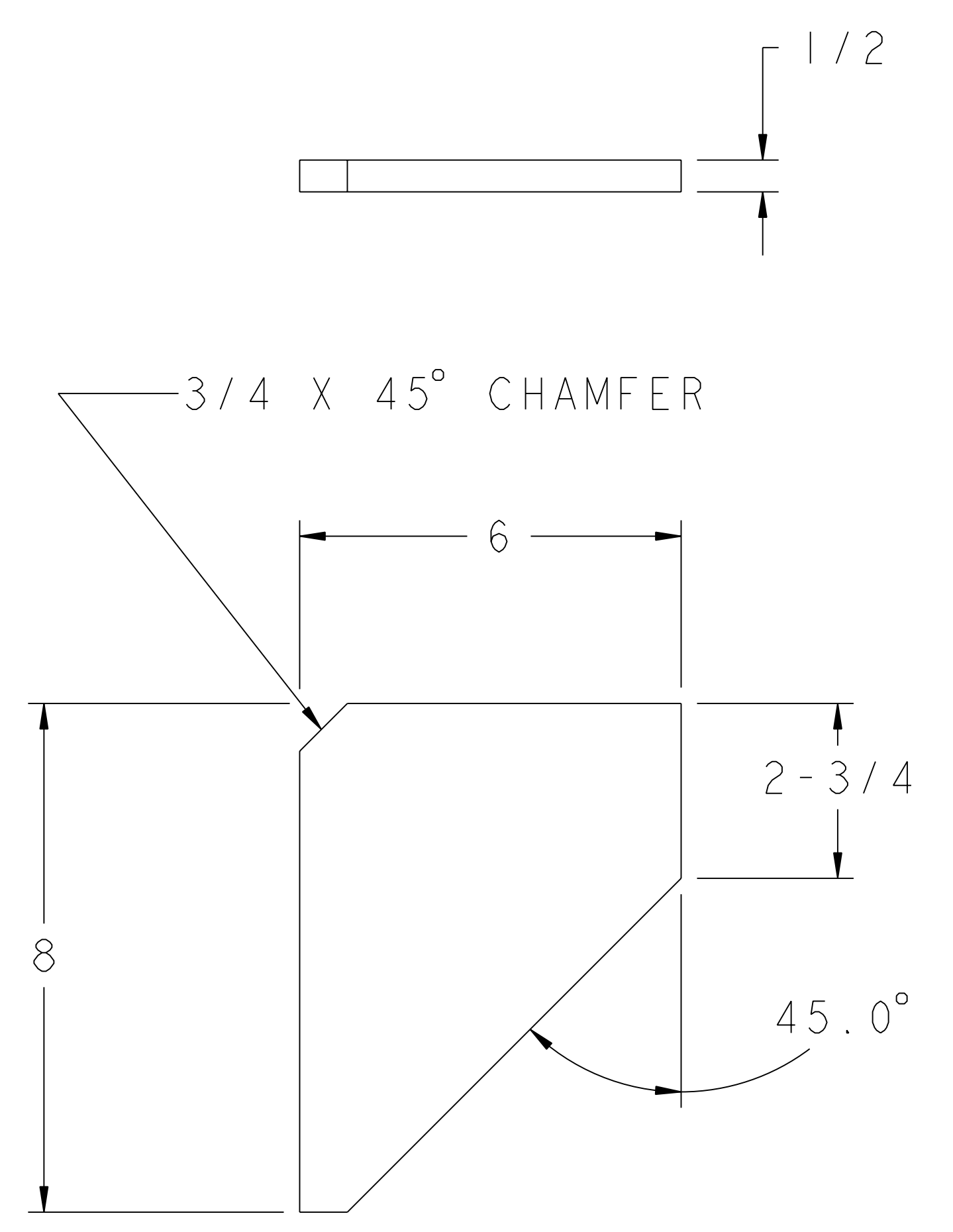


GRIND AT ASSY TO CONFORM TO LOWER DOME CONTOUR

④ **PLATFORM SUPPORT POST**
MAKE FORM 10" SCH #40 PIPE
SCALE 0.187



⑤ **POST MOUNTING PLATE**
SCALE 0.187



⑥ **POST PLATE GUSSET**
SCALE 0.500

RELEASED FOR FABRICATION / INSTALLATION

PART NO.	DRAWING NO	NOMENCLATURE OR DESCRIPTION	MATERIAL	QTY	RECD
6	SE144-327	PLATFORM CENTER POST GUSSET	STN STL	6	
5	SE144-326	CENTER POST MOUNTING PLATE	STN STL	1	
4	SE144-324	PLATFORM CENTER POST SUPPORT	STN STL	1	
3	SE144-374	GUSSET TIE PLATE	STN STL	6	
2	SE144-373	PLATFORM/VESSEL GUSSET - RIGHT	STN STL	6	
1	SE144-372	PLATFORM/VESSEL GUSSET - LEFT	STN STL	6	

PARTS LIST

COMPUTER GENERATED DRAWING MANUAL CHANGES NOT PERMITTED Pro E	CENTRAL FILES: UNLESS OTHERWISE SPECIFIED DIMENSIONS ARE IN INCHES MACHINE SURFACES BREAK SHARP EDGES .005/.020	PRINCETON PLASMA PHYSICS LABORATORY NATIONAL COMPACT STELLARATOR EXPERIMENT STELLARATOR CORE MODULAR COIL WINDING FACILITY PLATFORM SUPPORT GUSSET/MOUNTING PLATE DETAILS
DO NOT VERIFY INFORMATION BY SCALING DRAWING	TOLERANCES NON-CUMULATIVE DECIMAL-INCH FRACTIONS .XX ±.000 .XXX ±.005 ANGULAR ±.0°-15'	DSN: J. RUSHINSKI CHK: ENGR: S. RAFTOPOULOS SUPV: DRAWING NO: SE144-380
NEXT ASSEMBLY	RELEASE LEVEL: Fabrication DWG VERSION NO: 0	WELDING ENGINEER SHEET 1 OF 1 REV 0

NCSX-SE144-380