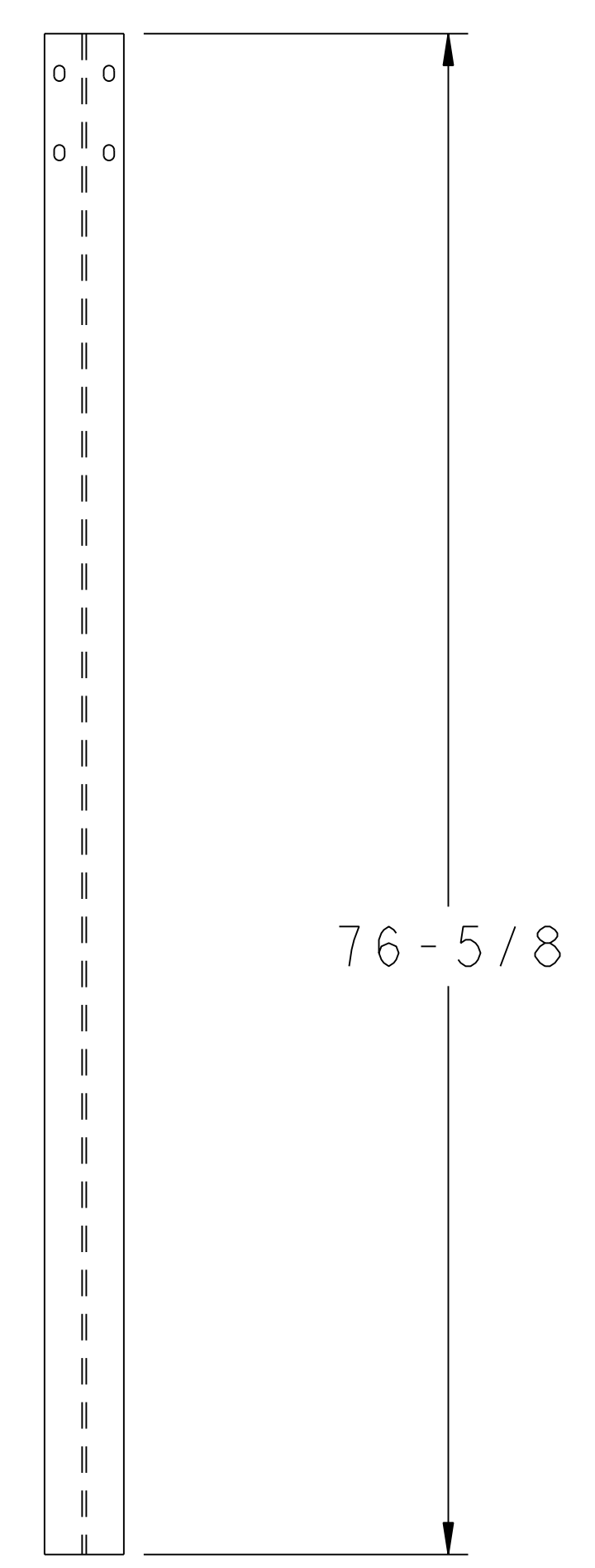
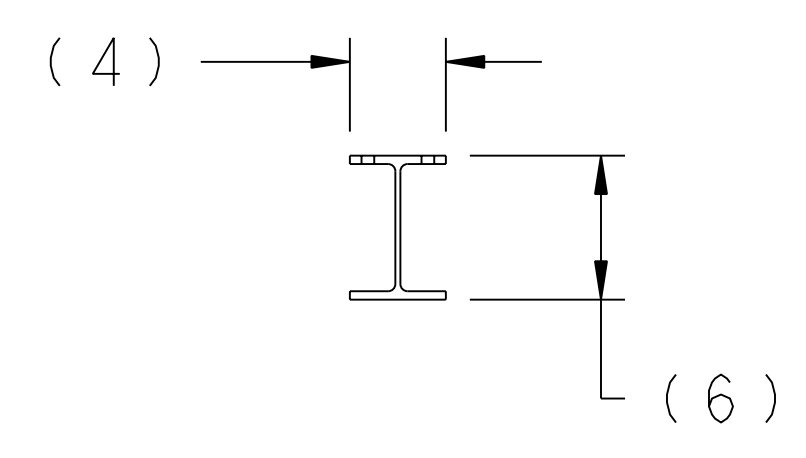
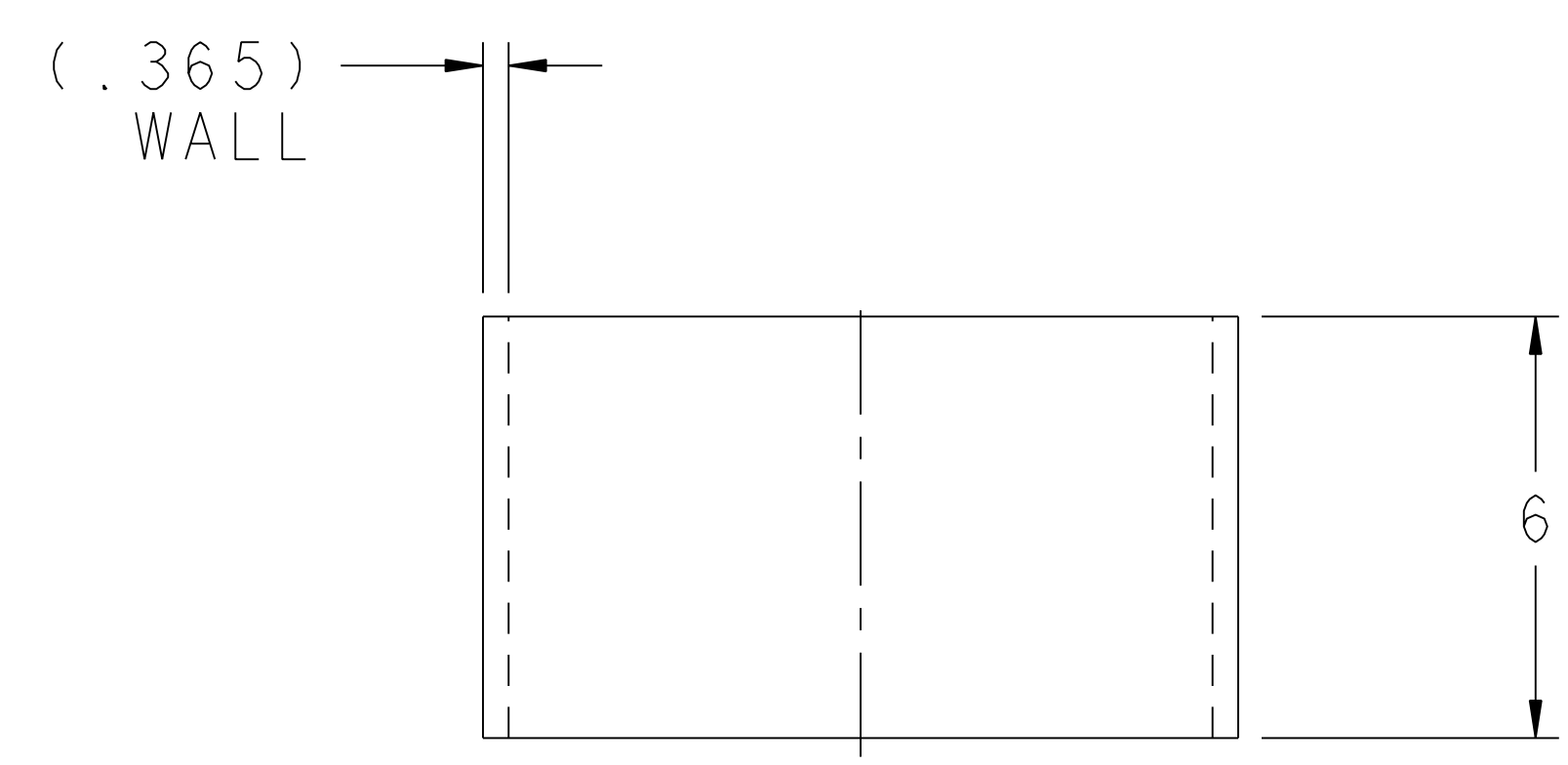
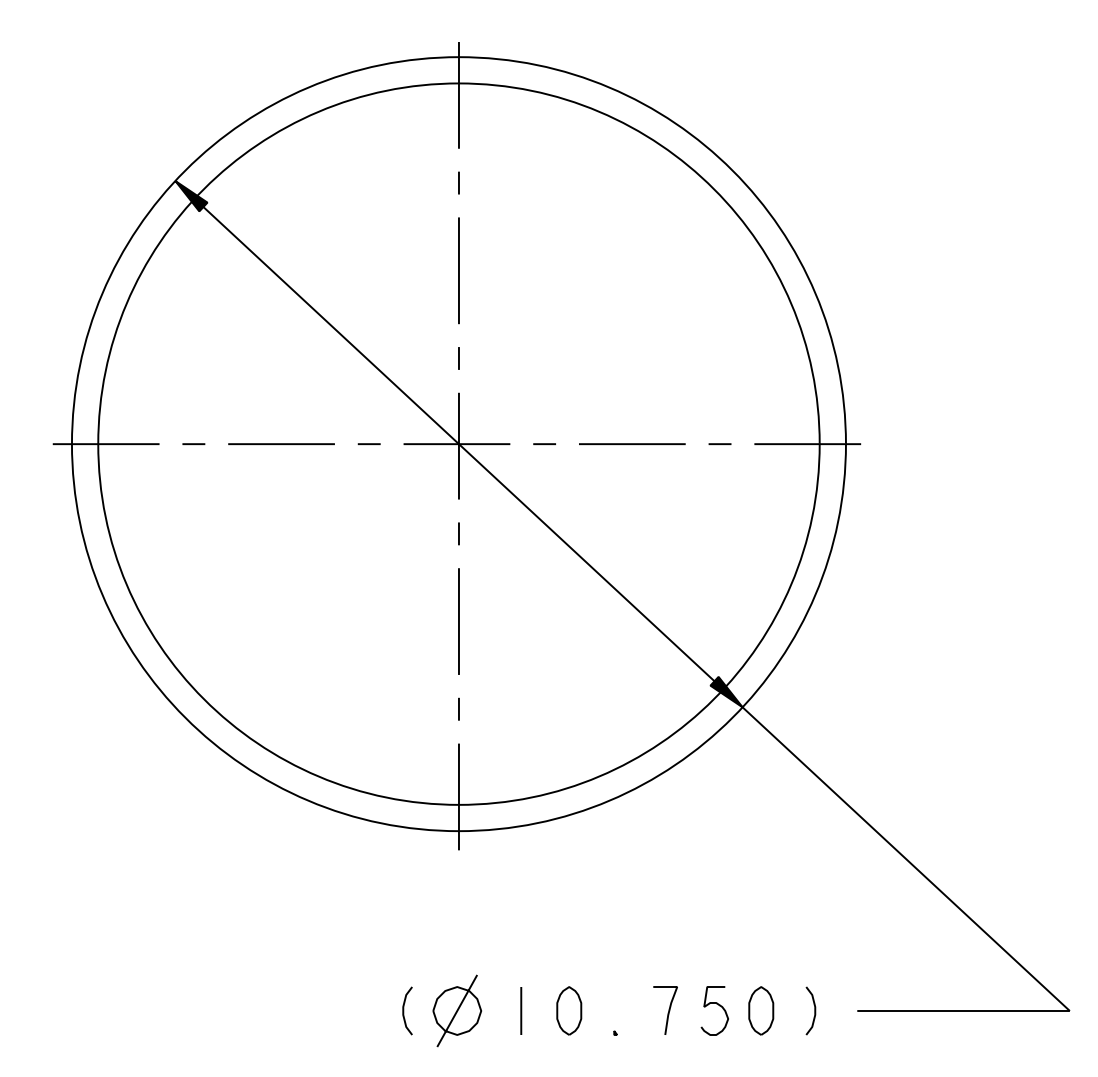


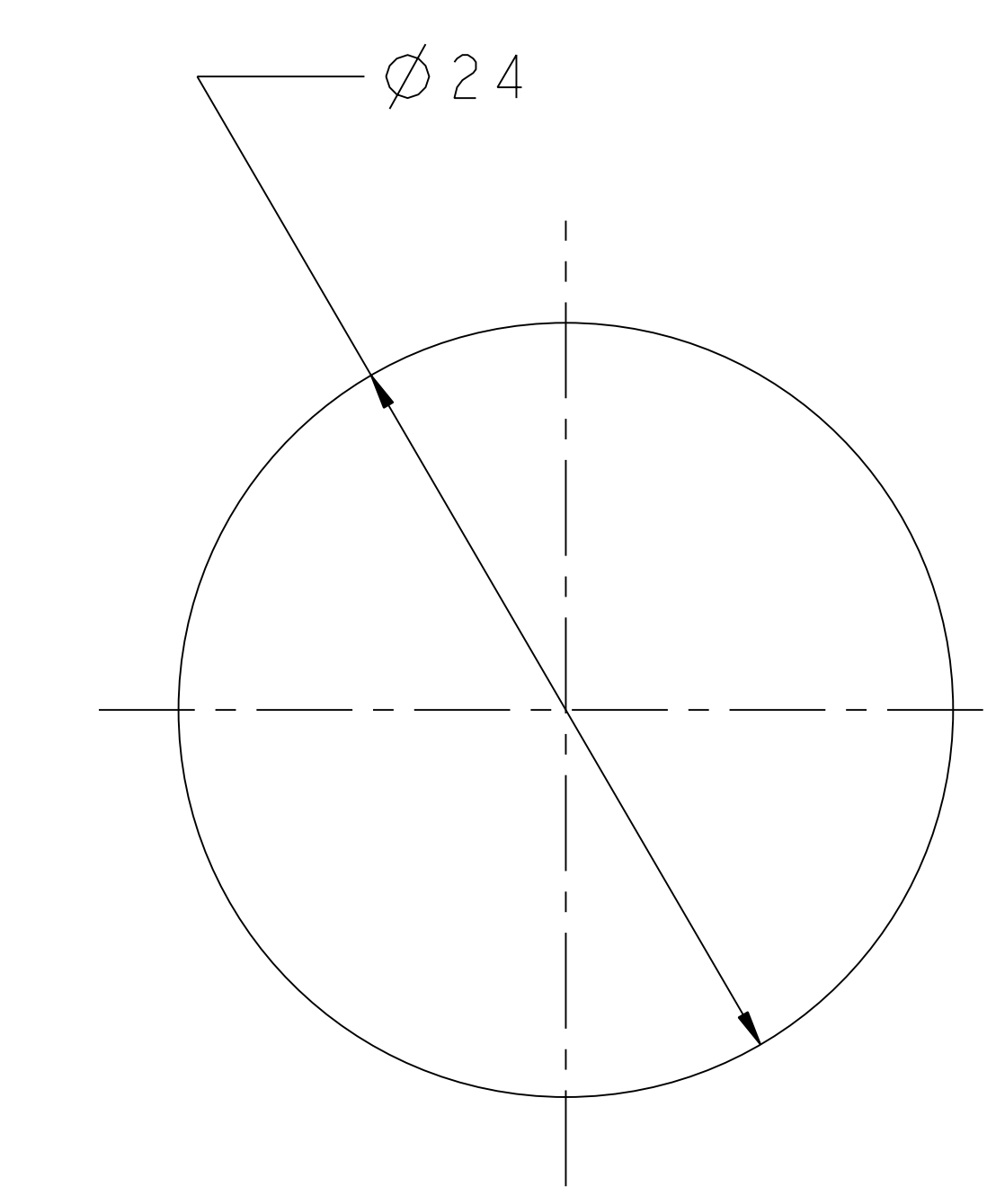
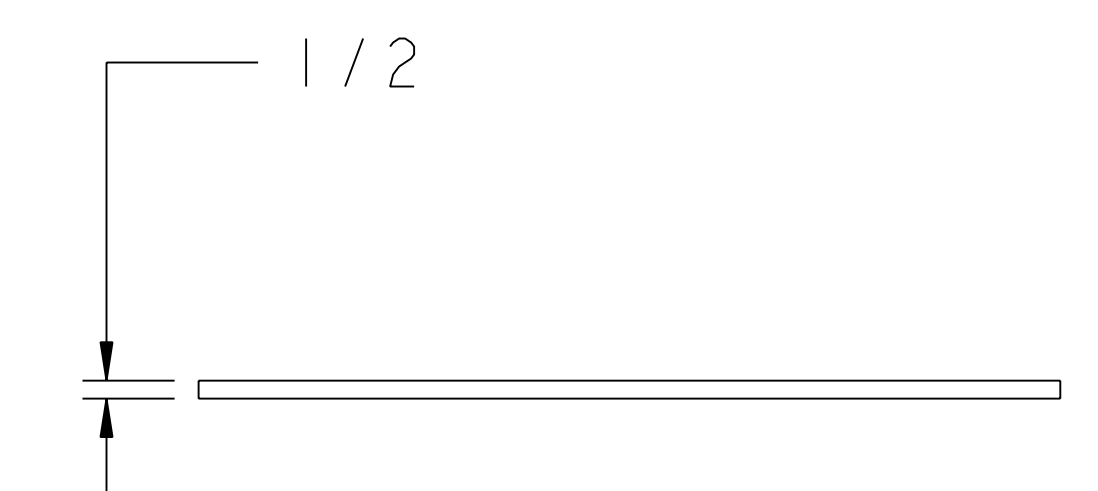
NO.	REVISION	BY	CH	SUP	APPROVED	DATE
1	REVISED PER ECN #4852	JDR	JC	JS	S. RAFTOPOULOS	5/05/04



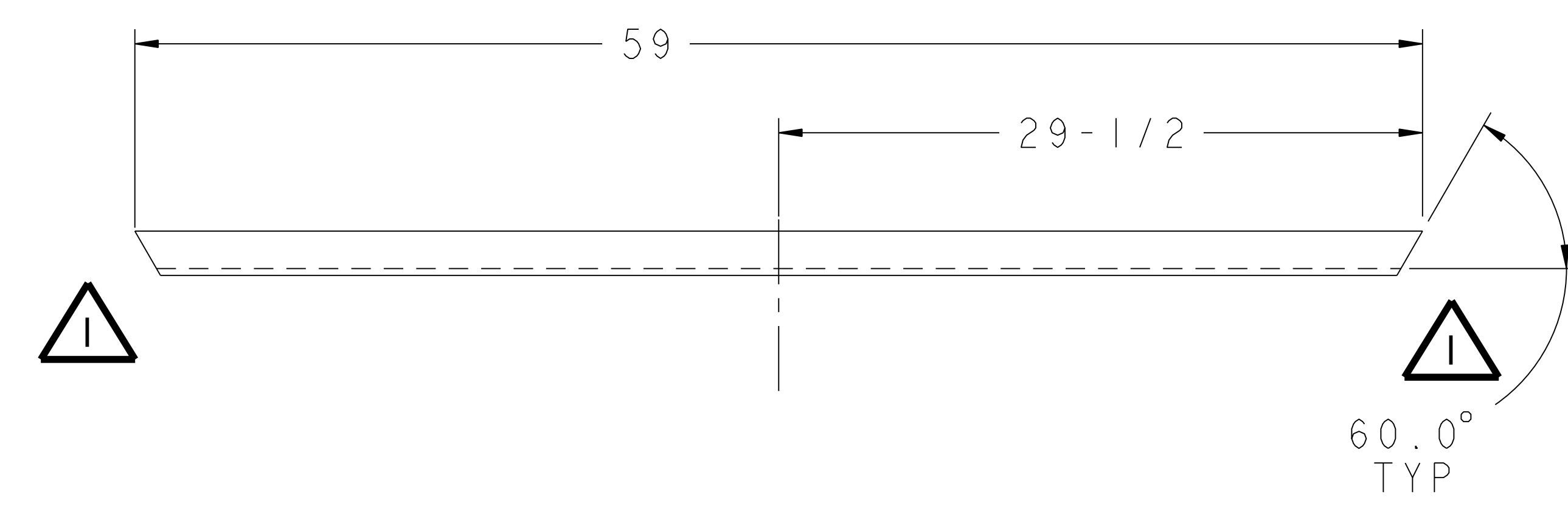
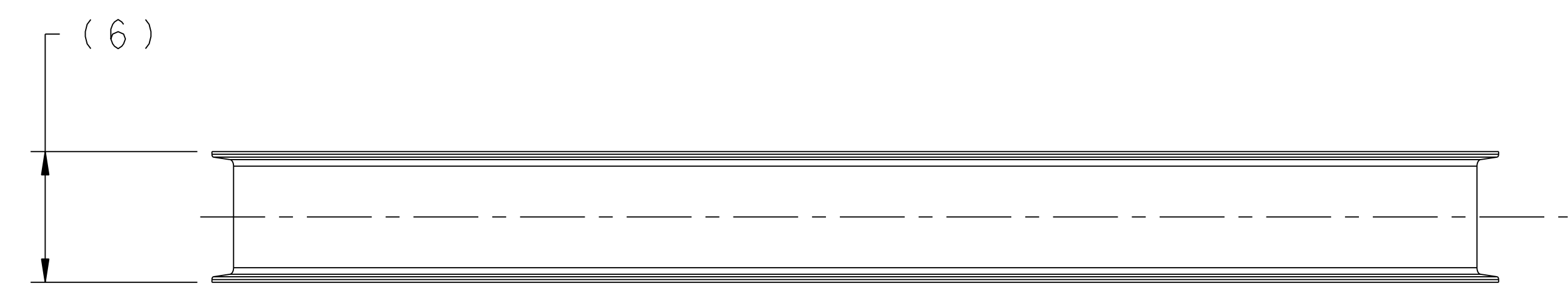
1 SUPPORT BEAM
MAKE FROM 6" X 4.69# BEAM
SCALE 0.125



2 BEAM TIE RING
MAKE FROM SCH #40 PIPE
SCALE 0.375



3 BEAM TIE PLATE
SCALE 0.187



4 CROSS BRACE
MAKE FROM 6" CHANNEL 3.63#
SCALE 0.187

**RELEASED FOR
FABRICATION / INSTALLATION**
PPPL Drafting:

PART NO.	DRAWING NO	NOMENCLATURE OR DESCRIPTION	MATERIAL	QTY REOD
4	SE144-323	PLATFORM CROSS BRACE	ALUM	6
3	SE144-322	PLATFORM BEAM TIE PLATE	ALUM	2
2	SE144-321	PLATFORM BEAM TIE RING	ALUM	1
1	SE144-319	PLATFORM SUPPORT BEAM	ALUM	6

PARTS LIST				
COMPUTER GENERATED DRAWING MANUAL CHANGES NOT PERMITTED Pro E	CENTRAL FILES: UNLESS OTHERWISE SPECIFIED	PRINCETON PLASMA PHYSICS LABORATORY PRINCETON UNIVERSITY NATIONAL COMPACT STELLARATOR EXPERIMENT		
DO NOT VERIFY INFORMATION BY SCALING DRAWING	DIMENSIONS ARE IN INCHES MACHINE SURFACES BREAK SHARP EDGES .005/.020	STELLARATOR CORE MODULAR COIL WINDING FACILITY COIL SUPPORT PLATFORM DETAILS		
TOLERANCES NON-CUMULATIVE	DECIMAL-INCH FRACTIONS	DSN: J. RUSHINSKI	DRAWING NO:	
NEXT ASSEMBLY	.XX ±.000 .XXX ±.005 ANGULAR ±.0°-15°	CHK: J. CHRZANOWSKI ENGR: S. RAFTOPOULOS SUPV: J. SIEGEL	SE144-381	
RELEASE LEVEL: Fabrication DWG VERSION NO: 0		WELDING ENGINEER	SHEET 1 OF 1 REV 1	

NCSX-SE144-381