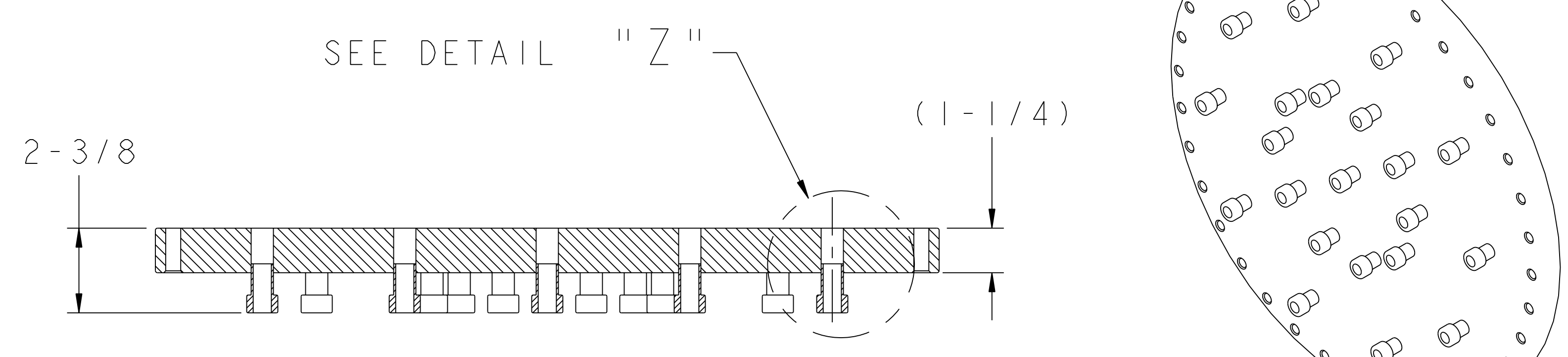
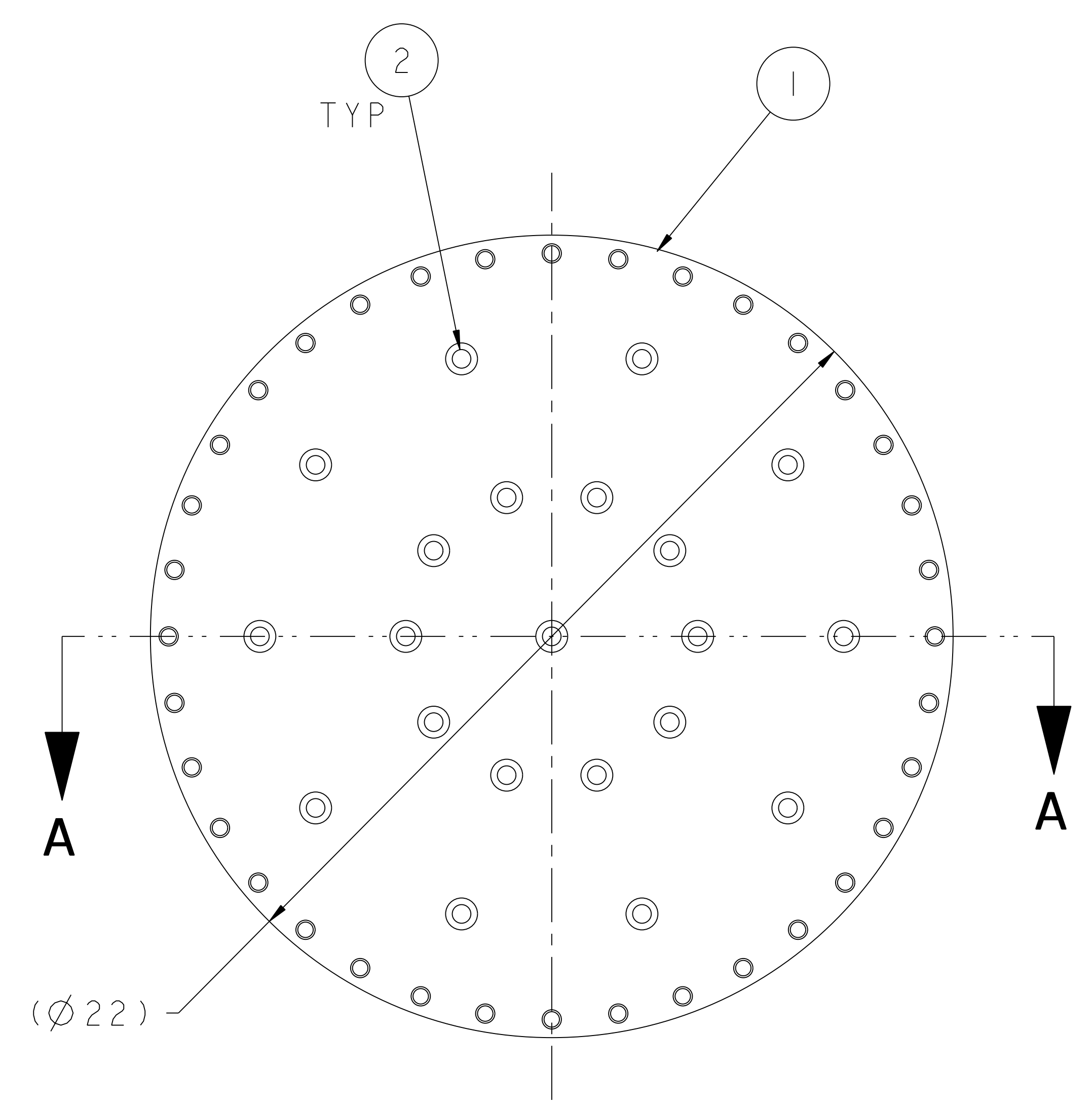
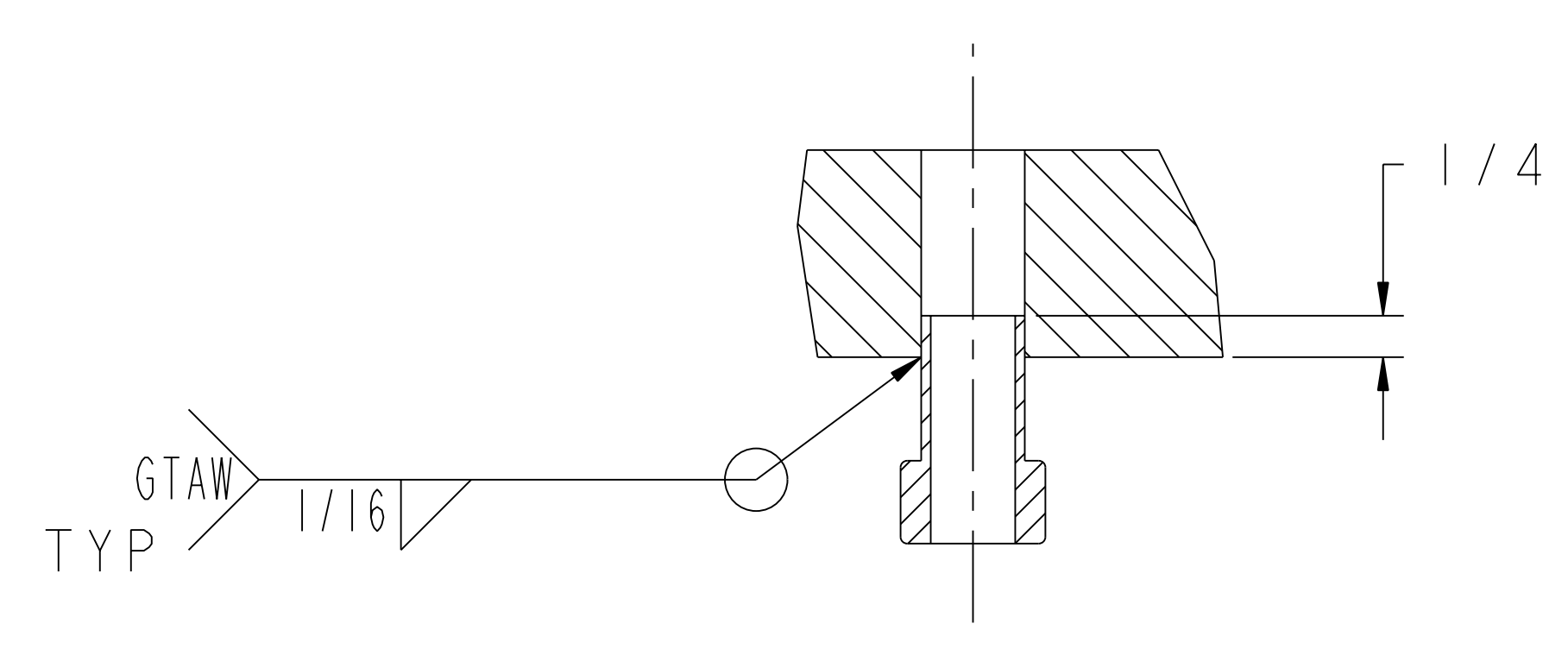


NO.	REVISION	BY	CH	SUP	APPROVED	DATE



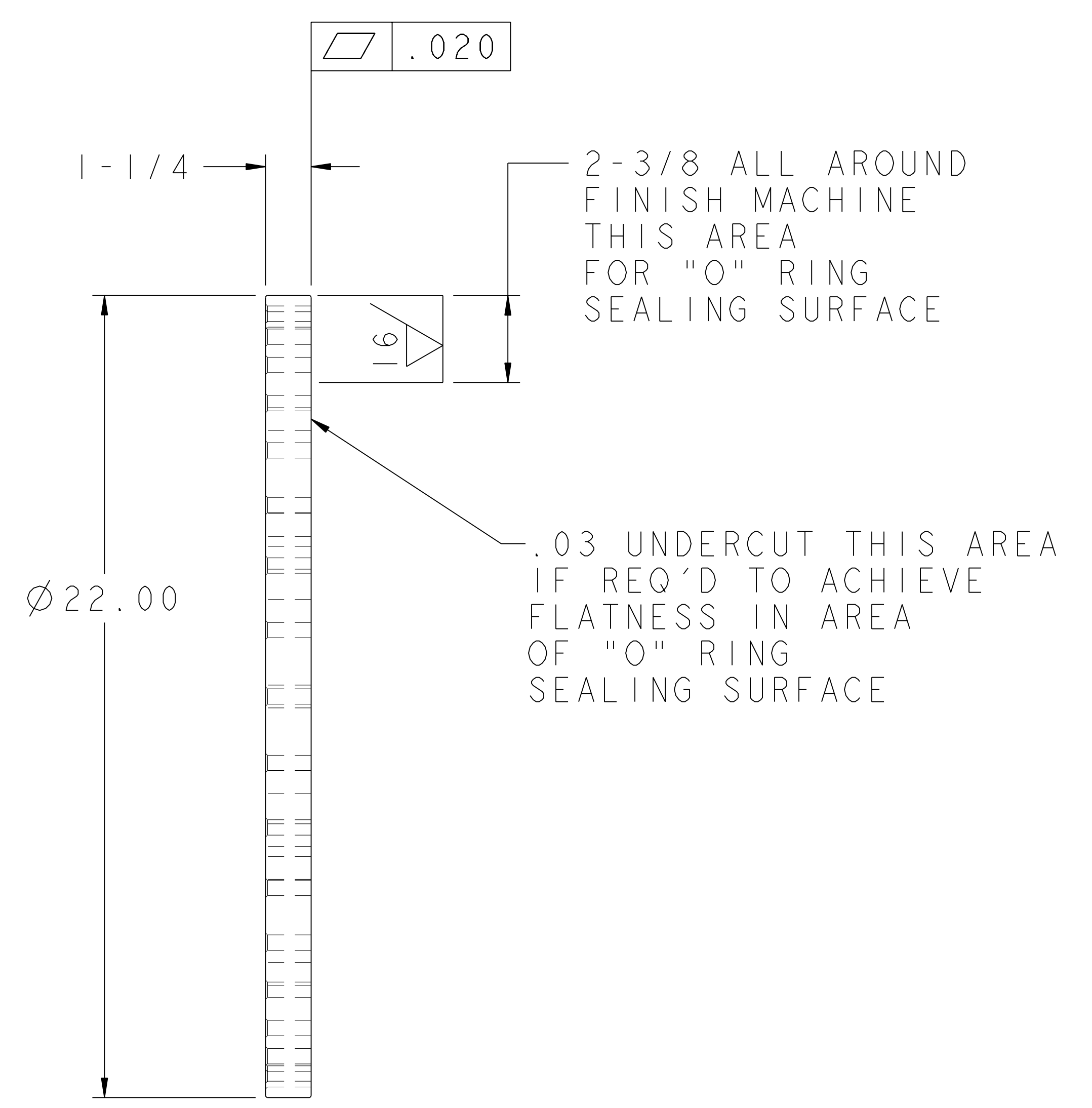
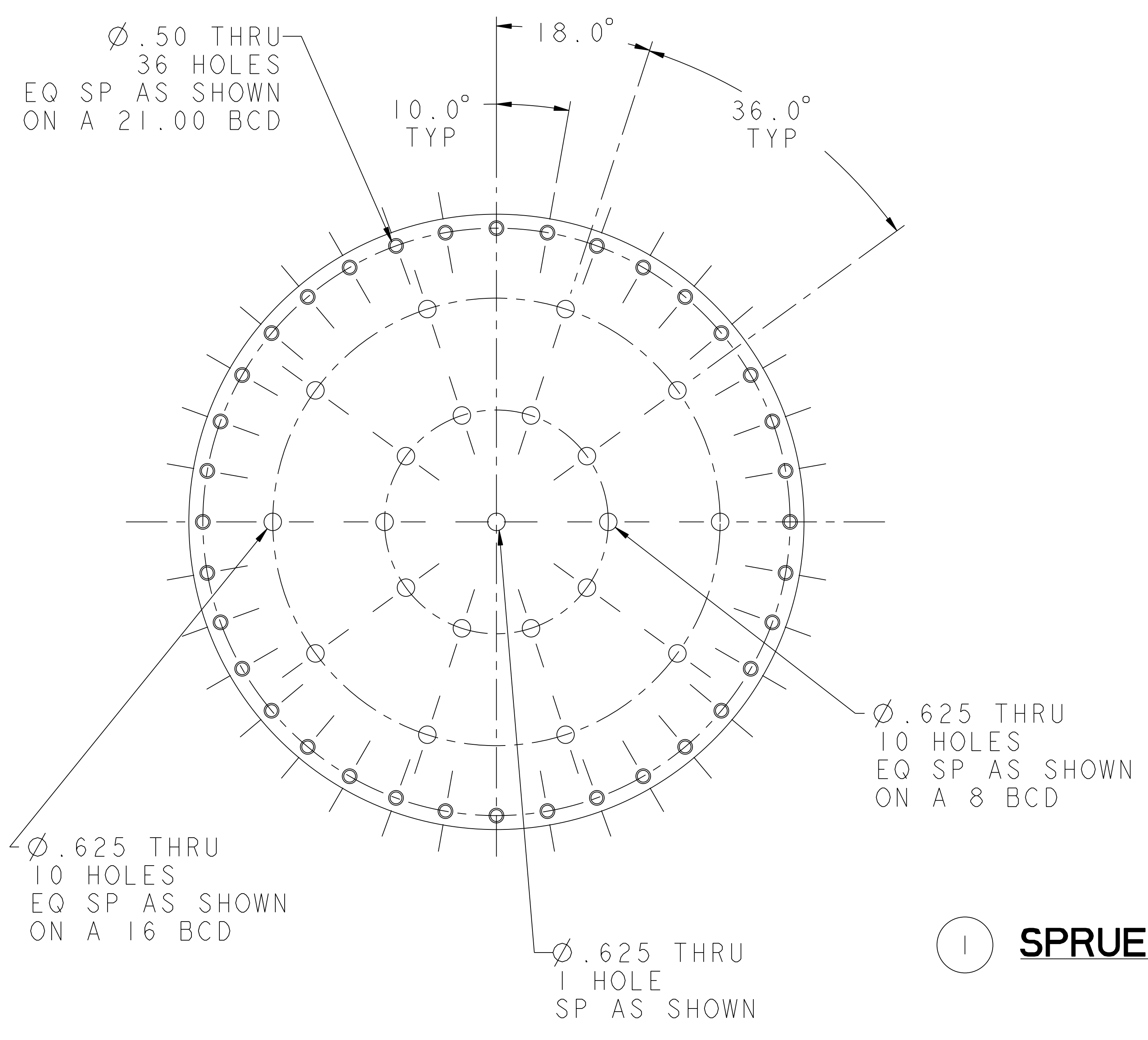
**SECTION A-A**  
SCALE 0.375



**DETAIL "Z"**  
SCALE 1.000

**SPRUE PORT COVER FLANGE ASSEMBLY**

- NOTE
1. WELDING SHALL BE PERFORMED IN ACCORDANCE WITH PPPL PROCEDURE EM-002.
  2. VISUAL WELD INSPECTION SHALL BE PERFORMED IN ACCORDANCE WITH ACCEPTANCE CRITERIA OF ASME B31.3 CATEGORY "D".
  3. NOTE ORIENTATION OF ALL PARTS BEFORE WELDING.
  4. LEAK RATE SHALL NOT EXCEED  $1 \times 10^{-5}$  torr-1/sec



**SPRUE PORT COVER FLANGE**  
SCALE 0.375

**RELEASED FOR FABRICATION / INSTALLATION**

2	COMM	MDC #410006 QUICK DISCONNECT	STN STL	21
1	SE144-388	SPRUE PORT COVER FLANGE	STN STL	1
PART NO.	DRAWING NO	NOMENCLATURE OR DESCRIPTION	MATERIAL	QTY RECD
PARTS LIST				
COMPUTER GENERATED DRAWING MANUAL CHANGES NOT PERMITTED Pro E	CENTRAL FILES: UNLESS OTHERWISE SPECIFIED DIMENSIONS ARE IN INCHES MACHINE SURFACES BREAK SHARP EDGES .005/.020	PRINCETON PLASMA PHYSICS LABORATORY NATIONAL COMPACT STELLARATOR EXPERIMENT STELLARATOR CORE MODULAR COIL WINDING FACILITY SPRU FEED THRU PORT COVER FLANGE ASSEMBLY/DETAILS		
DO NOT VERIFY INFORMATION BY SCALING DRAWING	TOLERANCES NON-CUMULATIVE	DSN: J. RUSHINSKI	DRAWING NO:	
	DECIMAL-INCH FRACTIONS	CHK:	<b>SE144-391</b>	
	.XX ±.030 12°-12° ±.118	ENGR: S. RAFTOPOULOS		
	.XXX ±.005 72°-120° ±.114	SUPV:	SHEET 1 OF 1 REV 0	
	ANGULAR ±.0°-15° OVER 120° ±.112			

RELEASE LEVEL: Fabrication  
DWG VERSION NO: 0

WEIGHT  
135.3 lbs  
MODEL NAME  
SE144-391

NCSX-SE144-391