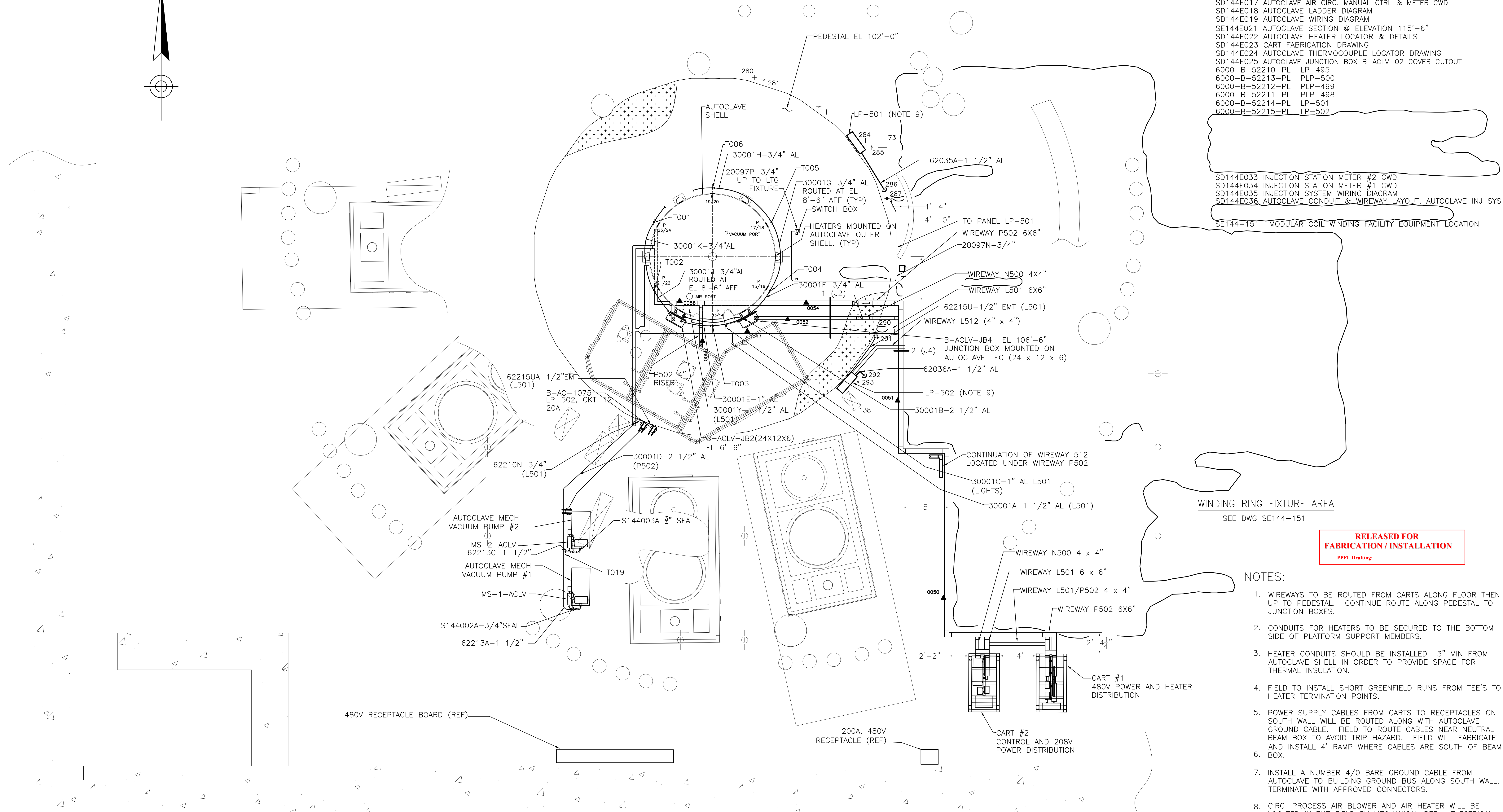


REFERENCE DRAWINGS:

- SB144E001 AUTOCLAVE 300W TUNG. HALOGEN LIGHTING
- SB144E002 AUTOCLAVE COMB. MOT. CTRL MS-1-ACLV
- SB144E003 AUTOCLAVE COMB. MOT. CTRL MS-2-ACLV
- SB144E004 AUTOCLAVE 2000W PRIMARY HTR 1-6
- SB144E005 AUTOCLAVE 2000W PRIMARY HTR 7-12
- SB144E006 AUTOCLAVE 2000W SECONDARY HTR 1-6
- SB144E007 AUTOCLAVE 2000W SECONDARY HTR 7-12
- SB144E008 AUTOCLAVE 2000W PRIMARY HTR 13-18
- SB144E009 AUTOCLAVE 2000W PRIMARY HTR 19-24
- SB144E010 AUTOCLAVE CRCLT HTR CTRL MS-4-ACLV
- SB144E011 AUTOCLAVE BLOWER CTRL MS-3-ACLV
- SB144E012 120V, 3Ø AC POWER RECEPTACLES CWD, CART#2
- SB144E013 120V, 3Ø AC POWER RECEPTACLES CWD, AUTOCLAVE
- SD144E014 ONE LINE DIAGRAM
- SD144E015 AUTOCLAVE MOTOR #1 CWD
- SD144E016 AUTOCLAVE MOTOR #2 CWD
- SD144E017 AUTOCLAVE AIR CIRC. MANUAL CTRL & METER CWD
- SD144E018 AUTOCLAVE LADDER DIAGRAM
- SD144E019 AUTOCLAVE WIRING DIAGRAM
- SE144E021 AUTOCLAVE SECTION @ ELEVATION 115'-6"
- SD144E022 AUTOCLAVE HEATER LOCATOR & DETAILS
- SD144E023 CART FABRICATION DRAWING
- SD144E024 AUTOCLAVE THERMOCOUPLE LOCATOR DRAWING
- SD144E025 AUTOCLAVE JUNCTION BOX B-ACLV-02 COVER CUTOUT
- 6000-B-52210-PL LP-495
- 6000-B-52213-PL PLP-500
- 6000-B-52212-PL PLP-499
- 6000-B-52211-PL PLP-498
- 6000-B-52214-PL LP-501
- 6000-B-52215-PL LP-502
- SD144E033 INJECTION STATION METER #2 CWD
- SD144E034 INJECTION STATION METER #1 CWD
- SD144E035 INJECTION SYSTEM WIRING DIAGRAM
- SD144E036 AUTOCLAVE CONDUIT & WIREWAY LAYOUT, AUTOCLAVE INJ SYS
- SE144-151 MODULAR COIL WINDING FACILITY EQUIPMENT LOCATION

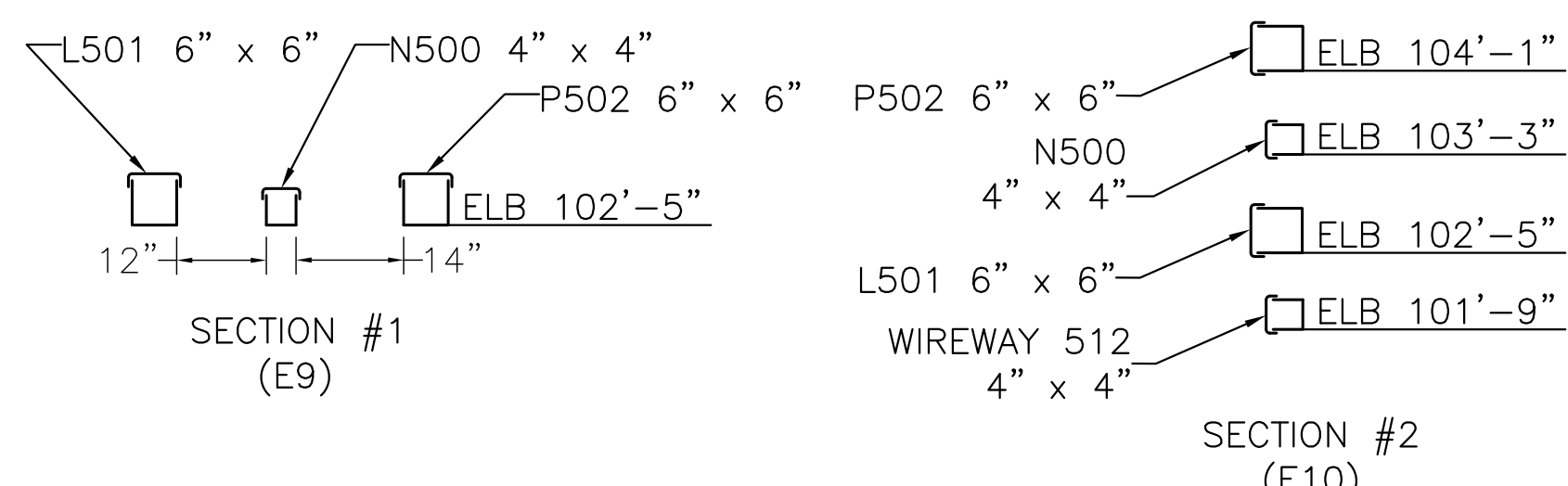


RELEASED FOR
FABRICATION / INSTALLATION
PPPL Drafting

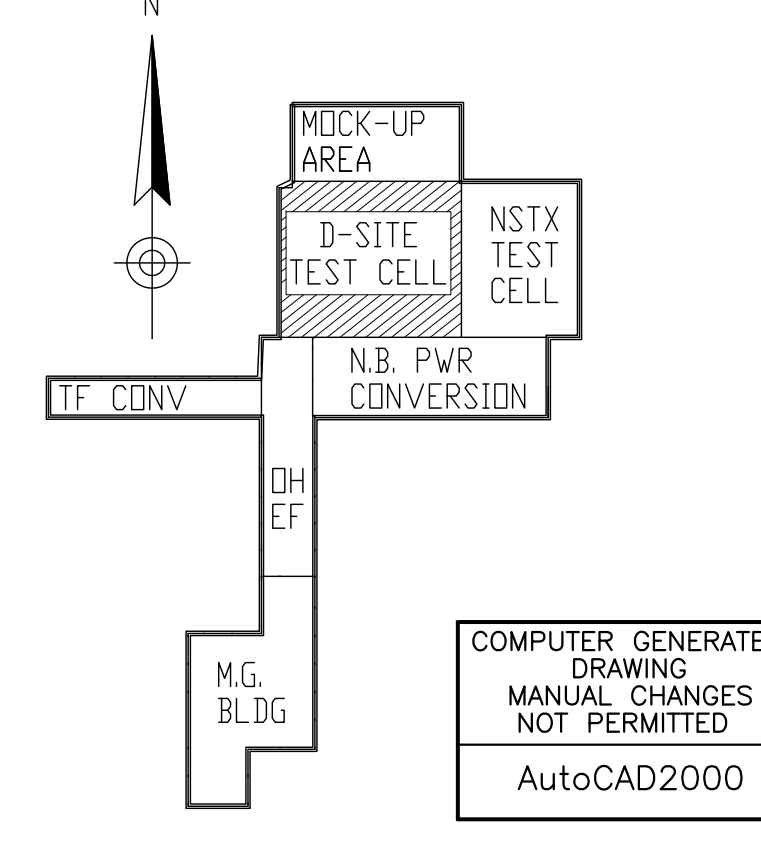
NOTES:

1. WIREWAYS TO BE ROUTED FROM CARTS ALONG FLOOR THEN UP TO PEDESTAL. CONTINUE ROUTE ALONG PEDESTAL TO JUNCTION BOXES.
2. CONDUITS FOR HEATERS TO BE SECURED TO THE BOTTOM SIDE OF PLATFORM SUPPORT MEMBERS.
3. HEATER CONDUITS SHOULD BE INSTALLED 3" MIN FROM AUTOCLAVE SHELL IN ORDER TO PROVIDE SPACE FOR THERMAL INSULATION.
4. FIELD TO INSTALL SHORT GREENFIELD RUNS FROM TEE'S TO HEATER TERMINATION POINTS.
5. POWER SUPPLY CABLES FROM CARTS TO RECEPTACLES ON SOUTH WALL WILL BE ROUTED ALONG WITH AUTOCLAVE GROUND CABLE. FIELD TO ROUTE CABLES NEAR NEUTRAL BEAM BOX TO AVOID TRIP HAZARD. FIELD WILL FABRICATE AND INSTALL 4" RAMP WHERE CABLES ARE SOUTH OF BEAM BOX.
7. INSTALL A NUMBER 4/0 BARE GROUND CABLE FROM AUTOCLAVE TO BUILDING GROUND BUS ALONG SOUTH WALL. TERMINATE WITH APPROVED CONNECTORS.
8. CIRC. PROCESS AIR BLOWER AND AIR HEATER WILL BE LOCATED IN THE FIELD BY MECHANICAL REP. ELECTRICAL CONDUIT AND CABLE WILL BE FIELD ROUTED.
9. FIELD TO INSTALL TWO (2) VERTICAL STRUTS ON PEDESTAL AS PANEL SUPPORTS. CENTER OF PANEL TO BE @ ELEV. 104'-6".

D-SITE PARTIAL PLAN
AUTOCLAVE SECTION @ ELEVATION 108'-6"
(TEST CELL PLAN AT 100'-0")
SCALE 1/4"=1'-0"



NO.	REVISION	DATE	BY	CHK	APPROVED
1	RELOCATED	12/04			
2	PER EON-4835	12/04			
3	ADDED ROOM #2 EXTENSION, DWG. 512, 511, AND BOX DWG. 511-01 PER EON-4889 ADDED PROCESS AIR HEATER AND ASSOCIATED CONDUIT PER EON-4851	1/10			
4	EON-5176	10/9/06			
5	EON-5230	3/9/07			
6	EON-5369	6/12/08			
7	EON-5489	10/12/08			
8	EON-5619	10/12/08			
9	EON-5749	10/12/08			
10	EON-5879	10/12/08			
11	EON-6009	10/12/08			
12	EON-6139	10/12/08			
13	EON-6269	10/12/08			
14	EON-6399	10/12/08			
15	EON-6529	10/12/08			
16	EON-6659	10/12/08			
17	EON-6789	10/12/08			
18	EON-6919	10/12/08			
19	EON-7049	10/12/08			
20	EON-7179	10/12/08			
21	EON-7309	10/12/08			
22	EON-7439	10/12/08			
23	EON-7569	10/12/08			
24	EON-7699	10/12/08			
25	EON-7829	10/12/08			
26	EON-7959	10/12/08			
27	EON-8089	10/12/08			
28	EON-8219	10/12/08			
29	EON-8349	10/12/08			
30	EON-8479	10/12/08			
31	EON-8609	10/12/08			
32	EON-8739	10/12/08			
33	EON-8869	10/12/08			
34	EON-8999	10/12/08			
35	EON-9129	10/12/08			
36	EON-9259	10/12/08			
37	EON-9389	10/12/08			
38	EON-9519	10/12/08			
39	EON-9649	10/12/08			
40	EON-9779	10/12/08			
41	EON-9909	10/12/08			
42	EON-10039	10/12/08			
43	EON-10169	10/12/08			
44	EON-10299	10/12/08			
45	EON-10429	10/12/08			
46	EON-10559	10/12/08			
47	EON-10689	10/12/08			
48	EON-10819	10/12/08			
49	EON-10949	10/12/08			
50	EON-11079	10/12/08			
51	EON-11209	10/12/08			
52	EON-11339	10/12/08			
53	EON-11469	10/12/08			
54	EON-11599	10/12/08			
55	EON-11729	10/12/08			
56	EON-11859	10/12/08			
57	EON-11989	10/12/08			
58	EON-12119	10/12/08			
59	EON-12249	10/12/08			
60	EON-12379	10/12/08			
61	EON-12509	10/12/08			
62	EON-12639	10/12/08			
63	EON-12769	10/12/08			
64	EON-12899	10/12/08			
65	EON-13029	10/12/08			
66	EON-13159	10/12/08			
67	EON-13289	10/12/08			
68	EON-13419	10/12/08			
69	EON-13549	10/12/08			
70	EON-13679	10/12/08			
71	EON-13809	10/12/08			
72	EON-13939	10/12/08			
73	EON-14069	10/12/08			
74	EON-14199	10/12/08			
75	EON-14329	10/12/08			
76	EON-14459	10/12/08			
77	EON-14589	10/12/08			
78	EON-14719	10/12/08			
79	EON-14849	10/12/08			
80	EON-14979	10/12/08			
81	EON-15109	10/12/08			
82	EON-15239	10/12/08			
83	EON-15369	10/12/08			
84	EON-15499	10/12/08			
85	EON-15629	10/12/08			
86	EON-15759	10/12/08			
87	EON-15889	10/12/08			
88	EON-16019	10/12/08			
89	EON-16149	10/12/08			
90	EON-16279	10/12/08			
91	EON-16409	10/12/08			
92	EON-16539	10/12/08			
93	EON-16669	10/12/08			
94	EON-16799	10/12/08			
95	EON-16929	10/12/08			
96	EON-17059	10/12/08			
97	EON-17189	10/12/08			
98	EON-17319	10/12/08			
99	EON-17449	10/12/08			
100	EON-17579	10/12/08			



PRINCETON PLASMA PHYSICS LABORATORY PRINCETON UNIVERSITY NATIONAL COMPACT STELLATOR EXPERIMENT MODULAR COILS TOOLING AND WINDING AUTOCLAVE CONDUIT AND WIREWAY LAYOUT AUTOCLAVE SECTION @ ELEVATION 108'-6"			
DIV: ELECTRICAL	DATE: 2/20/04	CADD FILE: SE144E020R6.DWG	
ENG: FRANK JONES	APPROVED: FRANK JONES	SE144E020	
DWN: FRANK JONES	CHK: JIM NELSON	CHK: J.N.	SUPV: J.S.
CHK: JIM NELSON	CHK: J.N.	SUPV: J.S.	SHEET OF REV 6

SE144E020.DWG
1/4"=1'-0"