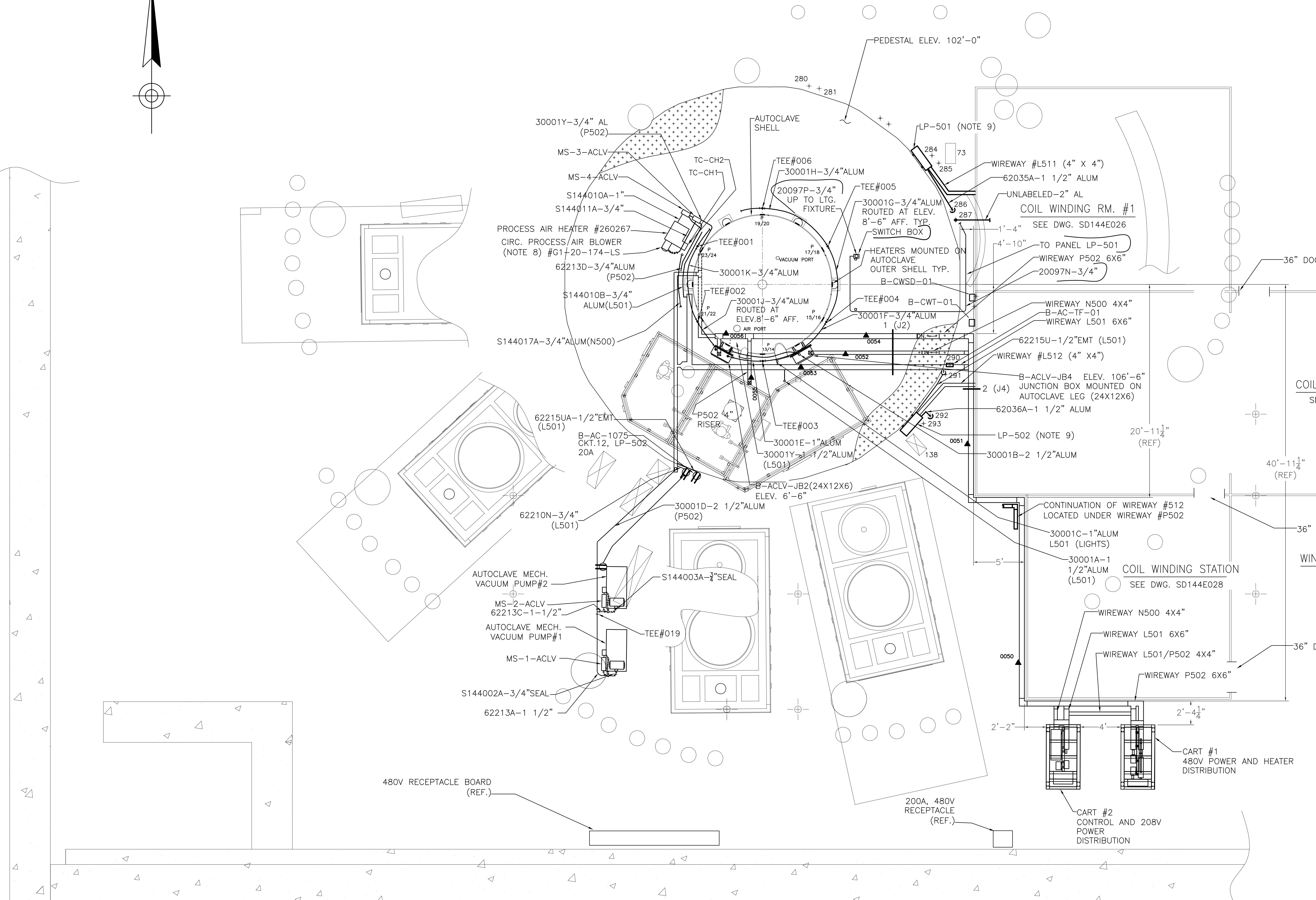


REFERENCE DRAWINGS:

- SB144E001 AUTOCLAVE 300W TUNG. HALOGEN LIGHTING
- SB144E002 AUTOCLAVE COMB. MOT. CTRL MS-1-ACLV
- SB144E003 AUTOCLAVE COMB. MOT. CTRL MS-2-ACLV
- SB144E004 AUTOCLAVE 2000W PRIMARY HTR 1-6
- SB144E005 AUTOCLAVE 2000W PRIMARY HTR 7-12
- SB144E006 AUTOCLAVE 2000W SECONDARY HTR 1-6
- SB144E007 AUTOCLAVE 2000W SECONDARY HTR 7-12
- SB144E008 AUTOCLAVE 2000W PRIMARY HTR 13-18
- SB144E009 AUTOCLAVE 2000W PRIMARY HTR 19-24
- SB144E010 AUTOCLAVE CRCLT HTR CTRL MS-4-ACLV
- SB144E011 AUTOCLAVE BLOWER CTRL MS-3-ACLV
- SB144E012 120V, 3Ø AC POWER RECEPTACLES CWD, CART#2
- SB144E013 120V, 3Ø AC POWER RECEPTACLES CWD, AUTOCLAVE
- SD144E014 ONE LINE DIAGRAM
- SD144E015 AUTOCLAVE MOTOR #1 CWD
- SD144E016 AUTOCLAVE MOTOR #2 CWD
- SD144E017 AUTOCLAVE AIR CIRC. MANUAL CTRL & METER CWD
- SD144E018 AUTOCLAVE LADDER DIAGRAM
- SD144E019 AUTOCLAVE WIRING DIAGRAM
- SE144E021 AUTOCLAVE SECTION @ ELEVATION 115'-6"
- SD144E022 AUTOCLAVE HEATER LOCATOR & DETAILS
- SD144E023 CART FABRICATION DRAWING
- SD144E024 AUTOCLAVE THERMOCOUPLE LOCATOR DRAWING
- SD144E025 AUTOCLAVE JUNCTION BOX B-ACLV-02 COVER CUTOUT
- 6000-B-52210-PL LP-495
- 6000-B-52213-PL PLP-500
- 6000-B-52212-PL PLP-499
- 6000-B-52211-PL PLP-498
- 6000-B-52214-PL LP-501
- 6000-B-52215-PL LP-502
- SD144E026 COIL WINDING RM.#1 LIGHTING & EQUIP. POWER LAYOUT
- SD144E027 COIL WINDING RM.#2 LIGHTING & EQUIP. POWER LAYOUT
- SD144E028 COIL MOLD STATION LIGHTING & EQUIP. POWER
- SD144E029 WINDING STAND AC POWER CONTROL CWD
- SD144E030 WINDING STAND AC POWER & CONTROL CWD
- SD144E031 WINDING (MOLD) STAND AC POWER & CONTROL CWD
- SD144E032 WINDING (WELD PREP) STAND AC POWER & CONTROL CWD
- SD144E033 INJECTION STATION METER #2 CWD
- SD144E034 INJECTION STATION METER #1 CWD
- SD144E035 INJECTION SYSTEM WIRING DIAGRAM
- SD144E036 AUTOCLAVE CND. & WIREWAY LAYOUT, AUTOCLAVE INJ. SYSTEM
- S144E040 TF TURNABLE & CONTROLLER WIRING CWD
- SB144E042 WINDING STAND #2 AC POWER & CONTROL CWD
- SE144-151 MODULAR COIL WINDING FACILITY EQUIPMENT LOCATION



WELD PREP STATION
SEE DWG. SE144-151

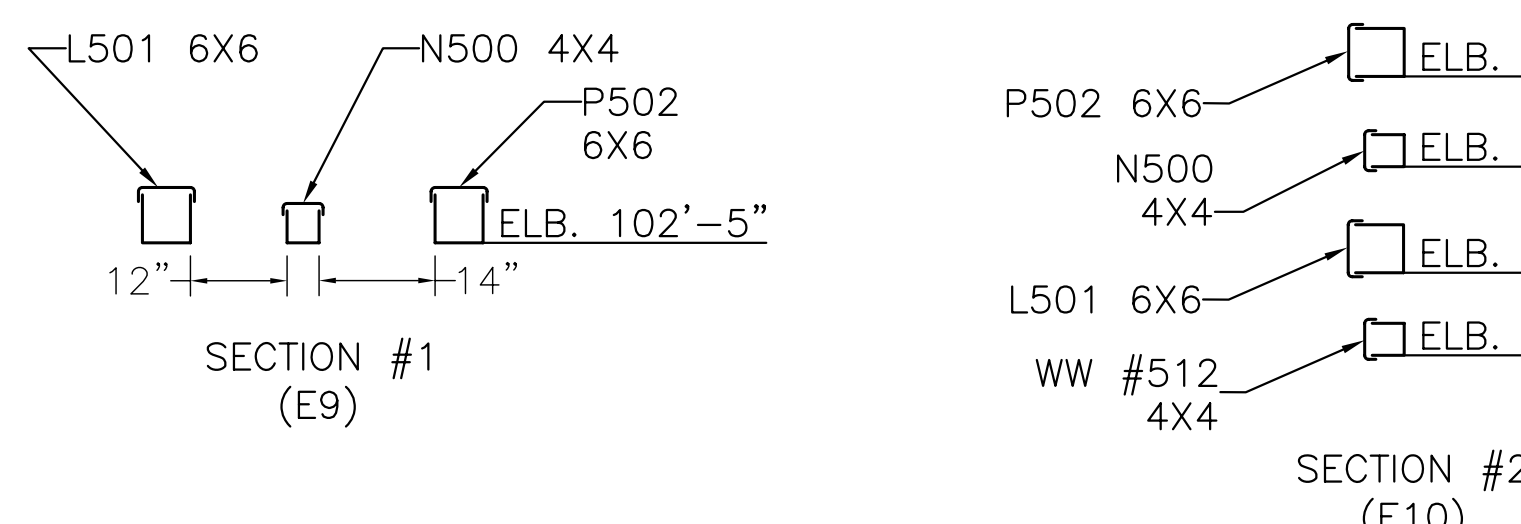
COIL WINDING RM. #2
SEE DWG. SD144E027

WINDING RING FIXTURE AREA
SEE DWG. SE144-151

NOTES:

1. WIREWAYS TO BE ROUTED FROM CARTS ALONG FLOOR THEN UP TO PEDESTAL. CONTINUE ROUTE ALONG PEDESTAL TO JUNCTION BOXES.
2. CONDUITS FOR HEATERS TO BE SECURED TO THE BOTTOM SIDE OF PLATFORM SUPPORT MEMBERS.
3. HEATER CONDUITS SHOULD BE INSTALLED 3" MIN. FROM AUTOCLAVE SHELL IN ORDER TO PROVIDE SPACE FOR THERMAL INSULATION.
4. FIELD TO INSTALL SHORT GREENFIELD RUNS FROM TEE'S TO HEATER TERMINATION POINTS.
5. POWER SUPPLY CABLES FROM CARTS TO RECEPTACLES ON SOUTH WALL WILL BE ROUTED ALONG WITH AUTOCLAVE GROUND CABLE. FIELD TO ROUTE CABLES NEAR NEUTRAL BEAM BOX TO AVOID TRIP HAZARD. FIELD WILL FABRICATE AND INSTALL 4' RAMP WHERE CABLES ARE SOUTH OF BEAM BOX.
7. INSTALL A NUMBER 4/0 BARE GROUND CABLE FROM AUTOCLAVE TO BUILDING GROUND BUS ALONG SOUTH WALL. TERMINATE WITH APPROVED CONNECTORS.
8. CIRC. PROCESS AIR BLOWER AND AIR HEATER WILL BE LOCATED IN THE FIELD BY MECHANICAL REP. ELECTRICAL CONDUIT AND CABLE WILL BE FIELD ROUTED.
9. FIELD TO INSTALL TWO (2) VERTICAL STRUTS ON PEDESTAL AS PANEL SUPPORTS. CENTER OF PANEL TO BE @ ELEV. 104'-6".

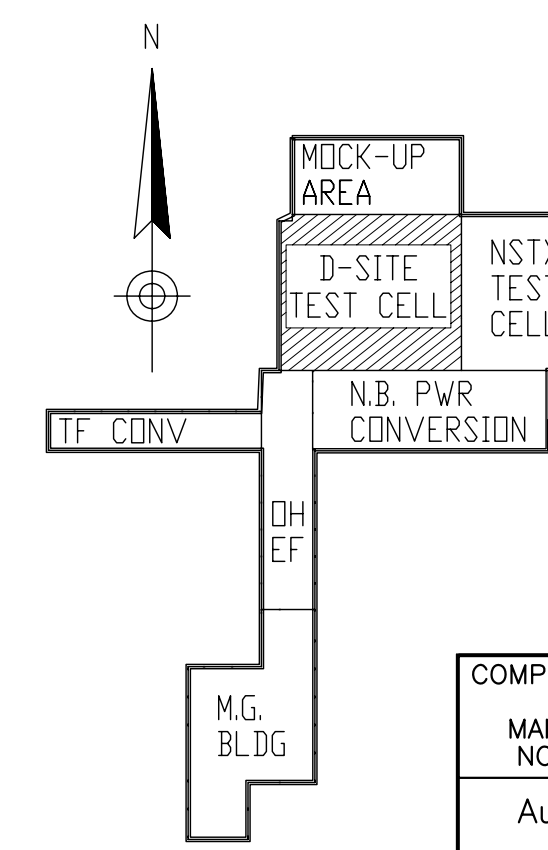
D-SITE PARTIAL PLAN
AUTOCLAVE SECTION @ ELEVATION 108'-6"
(TEST CELL PLAN AT 100'-0")
SCALE 1/4"=1'-0"



**RELEASED FOR
FABRICATION / INSTALLATION**

PPPL Drafting:

NO.	REVISION	DATE
1	BY CHK APPROVED	12/04
2	1. RELOCATED	12/04
3	CARTS #1, #502, W/INSOOL. PUMPS #1 & #2, BEAM BOX DETEDED NOTE #9, ADDED SECTIONS 1 & 2	12/04
4	ECN-4853	
5	FJ JUN F. JONE/J.S.	5/2/05
6	2. PER ECN-4835	12/04
7	ADDED LP-501 & LP-502 AND CONDUITS 62035A & 62036A & WIREWAYS #511, #512 (ZONES E7/9,10 AND C-07/9,10)	
8	ADDED DOORS IN ROOMS #1 & #2, W/INSOOL. STATION NOTE #9 AND REVISED REF. DWGS. (ZONES C.D.F.H/12,13) AND SECTION #2 (ZONE J/4)	
9	JUN F.J. F. JONE/J.S.	5/2/05
10	3. ADDED ROOM #2 EXTENSION DWG. S144E021 AND BOX DWG. S144E021 PER ECN-4889 ADDED PROCESS AIR HEATER AND ASSOCIATED CONDUIT PER ECN-4851	
11	RVK/FJ F.J. FJ/JUN	
12	4. ECN-5176	10/9/06
13	ADDED B-AC-1075, ASSOC. GND. & REF. DRAWINGS	
14	F.J. JUN FJ/JUN	
15	5. ECN-5230	3/9/07
16	ADDED CND. 20097N, P. SWITCH BOX	
17	F.J. JUN A. LANGELLA	



PRINCETON PLASMA PHYSICS LABORATORY PRINCETON UNIVERSITY NATIONAL COMPACT STELLARATOR EXPERIMENT MODULAR COILS TOOLING AND WINDING AUTOCLAVE CONDUIT AND WIREWAY LAYOUT AUTOCLAVE SECTION @ ELEVATION 108'-6"			
DIV: ELECTRICAL ENG: FRANK JONES DWN: FRANK JONES CHK: JIM NELSON	DATE: 2/20/04 APPROVED: FRANK JONES SUPV: J.S.	CADD FILE: SE144E020R5.DWG SE144E020 SHEET OF REV 5	COMPUTER GENERATED DRAWING MANUAL CHANGES NOT PERMITTED AutoCAD2000