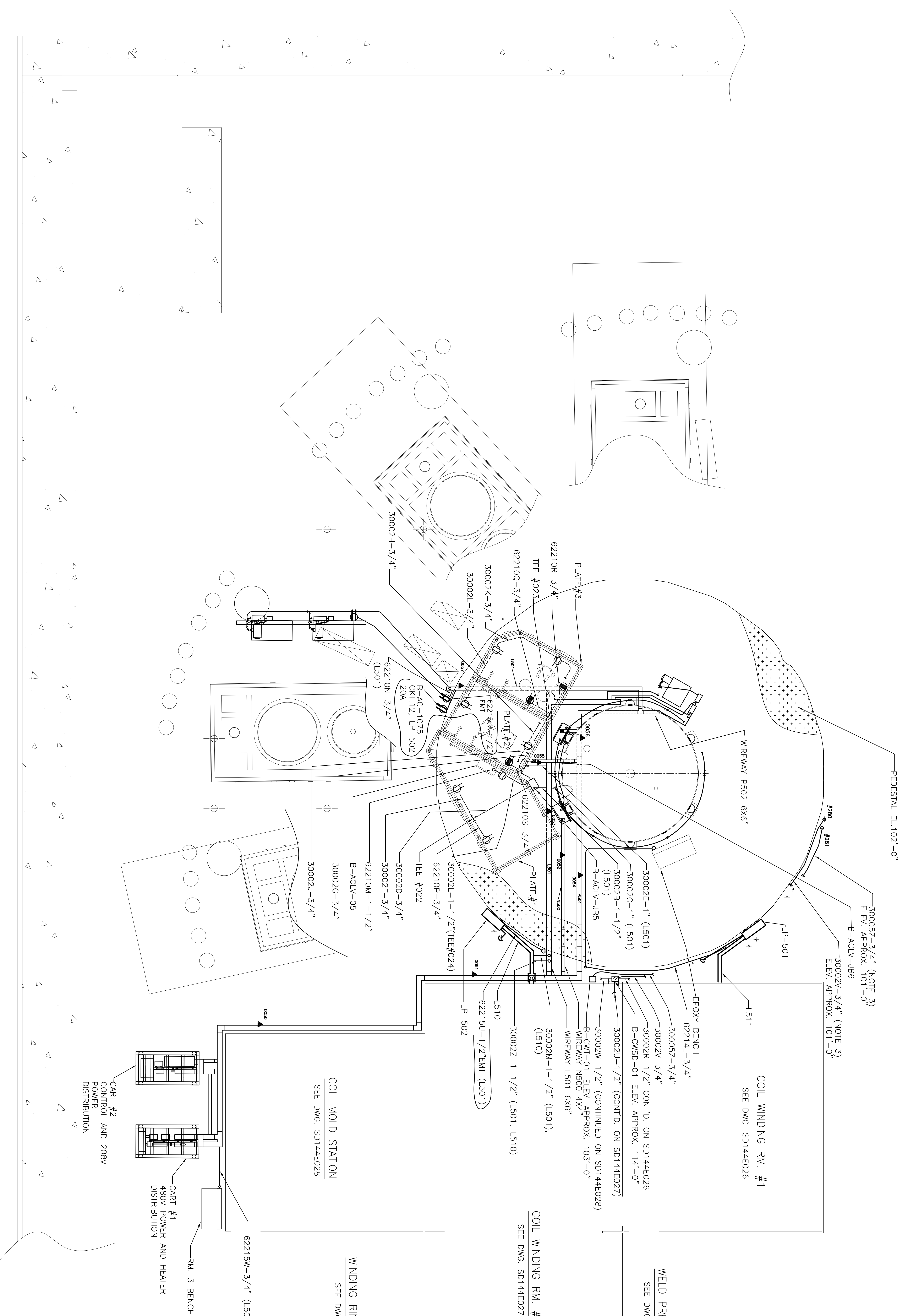


NO.	REVISION	DATE
1		7/28/04
ADDED SMOKE DETECTORS & CONDUIT PER ECN-4881		
FJ	JN	FJ JS
2		4/26/05
ADDED ROOM #2 EXTENSION & REFERENCE DWG SE144-151 PER ECN-4989		
RVK	FJ	FJ JN
2	PER ECN-5176	10/6/06
ADD B-AC-1075 & ASSOC CND		
FJ	JN	FJ JS



D-SITE PARTIAL PLAN  
 AUTOCLAVE SECTION @ ELEVATION  
 108'-6"  
 (TEST CELL PLAN AT 100'-0")  
 SCALE 1/4"=1'-0"

**RELEASED FOR  
 FABRICATION / INSTALLATION**  
 PPL Drafting

- REFERENCE DRAWINGS:**
- SB144E001 AUTOCLAVE 300W TUNG. HALOGEN LIGHTING
  - SD144E015 AUTOCLAVE METER #1 CWD
  - SD144E017 AUTOCLAVE AIR CIRC. MANUAL CNTR. \$ METER CWD
  - SD144E019 AUTOCLAVE WIRING DIAGRAM
  - SE144E020 AUTOCLAVE CND & WIREWAY LAYOUT, SECTION @ EL. 108'-6"
  - SD144E024 AUTOCLAVE THERMOCOUPLE LOCATOR DRAWING
  - SD144E026 COIL WINDING ROOM #1
  - SD144E027 COIL WINDING ROOM #2
  - SD144E028 COIL WINDING ROOM #3
  - SD144E033 INJECTION STATION METER #2 CWD
  - SD144E034 INJECTION STATION METER #3 CWD
  - SD144E035 INJECTION STATION METER #1 CWD
  - SD144E036 INJECTION STATION WIRE DIAGRAM
  - 6000-B-52215-PL LP-495
  - 6000-B-52214-PL LP-501
  - 6000-B-52215-PL LP-502
  - SE144E020 AUTOCLAVE SECTION @ ELEVATION 108'-6"
  - SE144E021 AUTOCLAVE SECTION @ ELEVATION 115'-6"
  - SE144-151 MODULAR COIL WINDING FACILITY ROOMS EQUIPMENT LOCATION

- LEGEND:**
- ⊕ 20A, 120 VOLT, CONVENIENCE RECEPTACLE, MOUNTED ON PLATFORMS 1, 2 & 3. INSTALLED 16" ABOVE EACH DECK.
  - ⊕ 30A, 120 VOLT, TWISTLOCK RECEPTACLE, MOUNTED ON PEDESTAL EDGE. DEDICATED RECEPTACLE FOR INJECTION VACUUM PUMP.
  - ⊕ 20A, 120 VOLT, TANK HEATER RECEPTACLE, MOUNTED ON PLATFORMS 2 & 3. INSTALLED 16" ABOVE EACH DECK.
  - ⊕ 20A, 120 VOLT, DEDICATED RECEPTACLE, MOUNTED ON PLATFORM, INSTALLED UNDER B-ACLV-05.
- WELD PREP STATION**  
 SEE DWG. SE144-151

**COIL WINDING RM. #1**  
 SEE DWG. SD144E026

**COIL WINDING RM. #2**  
 SEE DWG. SD144E027

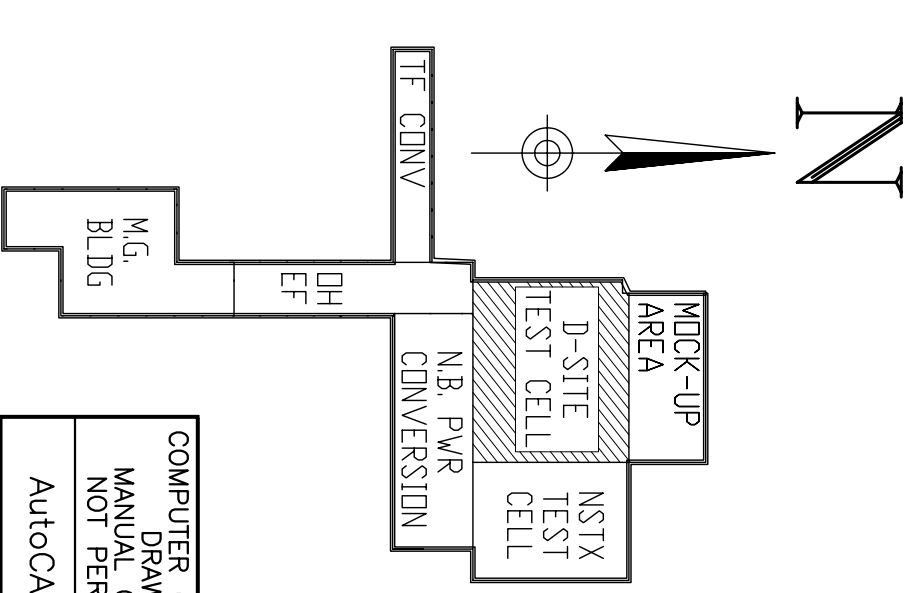
**WINDING RING FIXTURE AREA**  
 SEE DWG. SE144-151

**COIL MOLD STATION**  
 SEE DWG. SD144E028

**CART #1**  
 480V POWER AND HEATER DISTRIBUTION

**CART #2**  
 CONTROL AND 208V POWER DISTRIBUTION

- NOTES:**
1. INSTALL ONE NUMBER 6 AWG INSULATED GROUND CABLE FROM AUTOCLAVE GROUND TO THREE INJECTION PLATFORMS. TERMINATE WITH APPROVED CONNECTORS.
  2. THIS PHYSICAL CONDUIT AND WIREWAY LAYOUT IS DEDICATED TO THE INJECTION SYSTEM. SEE DRAWINGS SE144E020 AND SE144E021 FOR ADDITIONAL CONDUIT & WIREWAY INFORMATION.
  3. INSTALL A PULLING "C" CONDULET FITTING @ THE TOP OR BOTTOM OF PENETRATION. THE FITTING IS FOR AN AIR SEAL. CONDUIT AND FITTING MUST BE RIGID GALVANIZED STEEL.



COMPUTER GENERATED DRAWINGS. ANY CHANGES NOT PERMITTED. AutoCAD2000	
DR: ELECTRICAL	PRINCETON PLASMA PHYSICS LABORATORY
ENG: FRANK JONES	NATIONAL MODULAR CELLS EXPERIMENT
DWG: FRANK JONES	AUTOCLAVE TOOLING AND WINDING LAYOUT
CHK: JIM NELSON	AUTOCLAVE INJECTION SYSTEM
DATE: 6/23/04	CADD FILE: SE144E036.DWG
<b>SE144E036</b>	
SHEET 14	OF 15