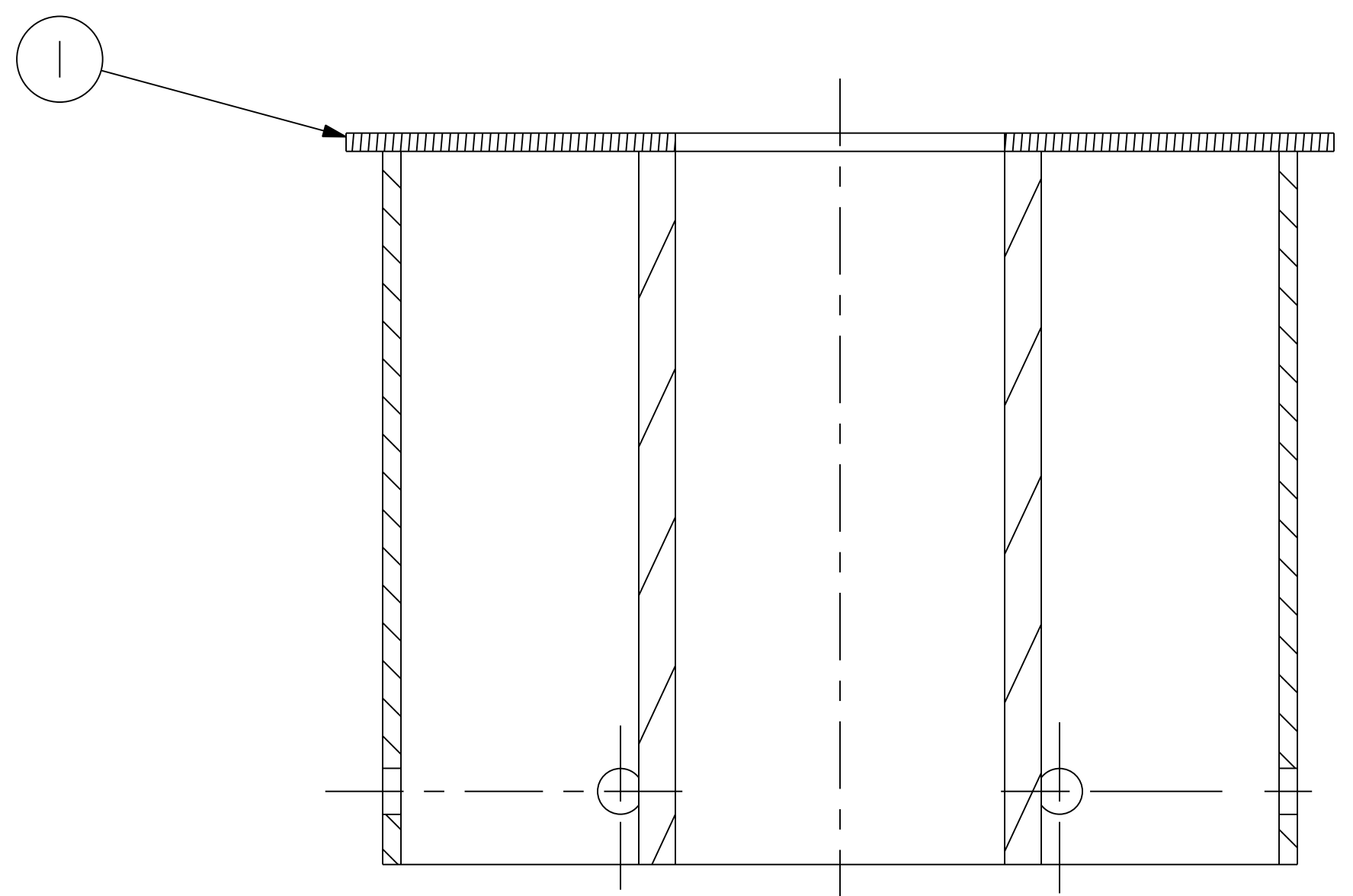
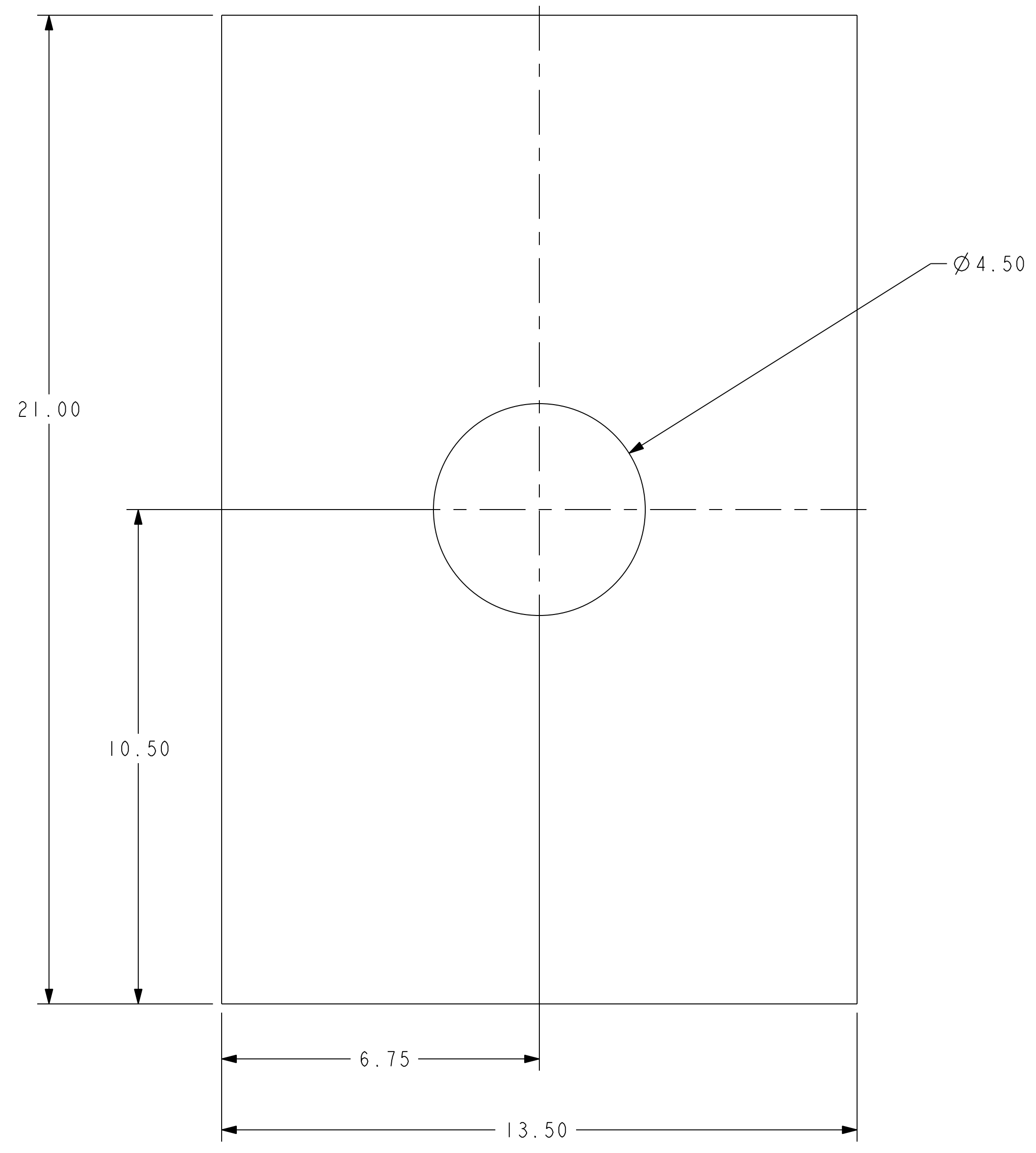


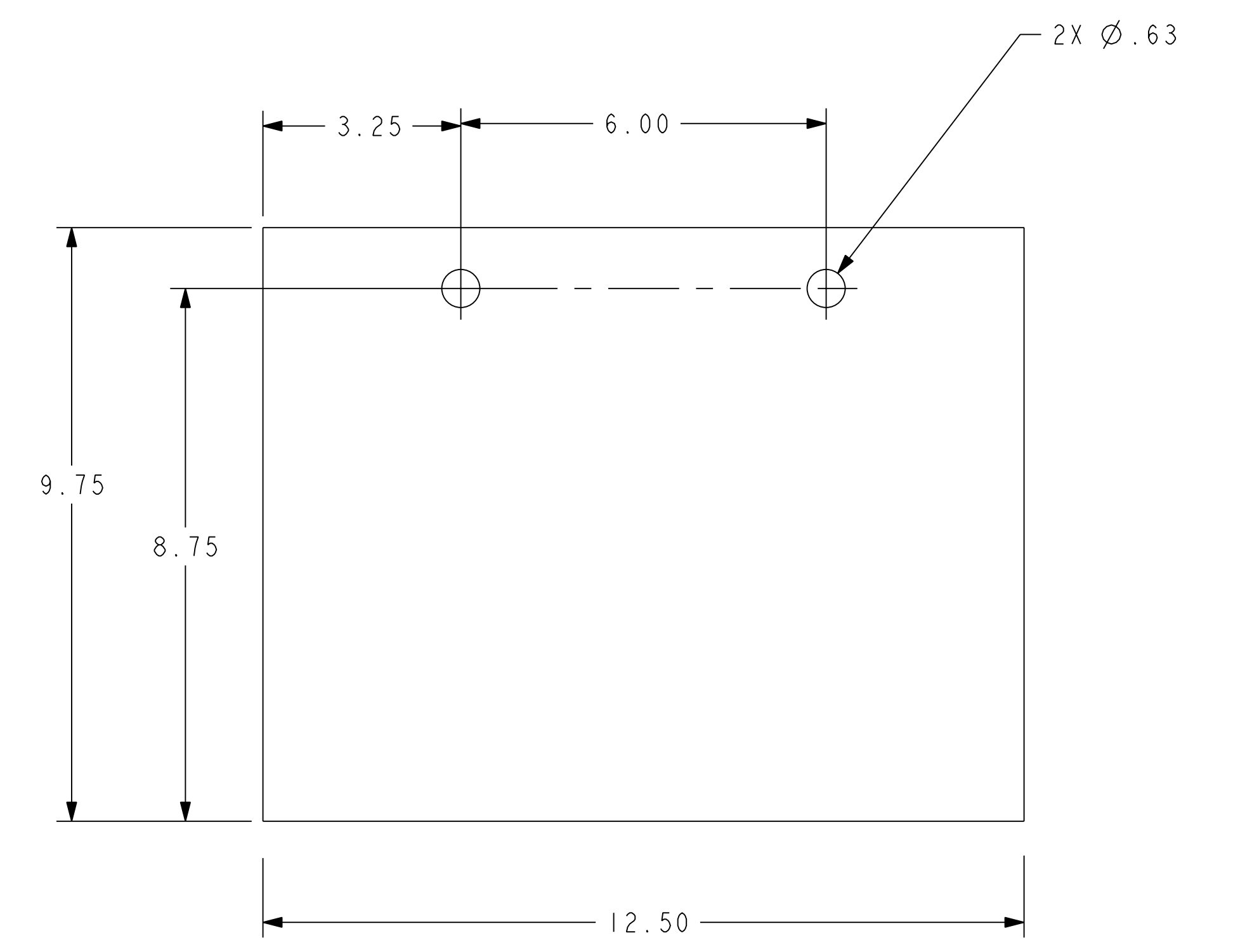
NO.	REVISION	BY	CH	SUP	APPROVED	DATE



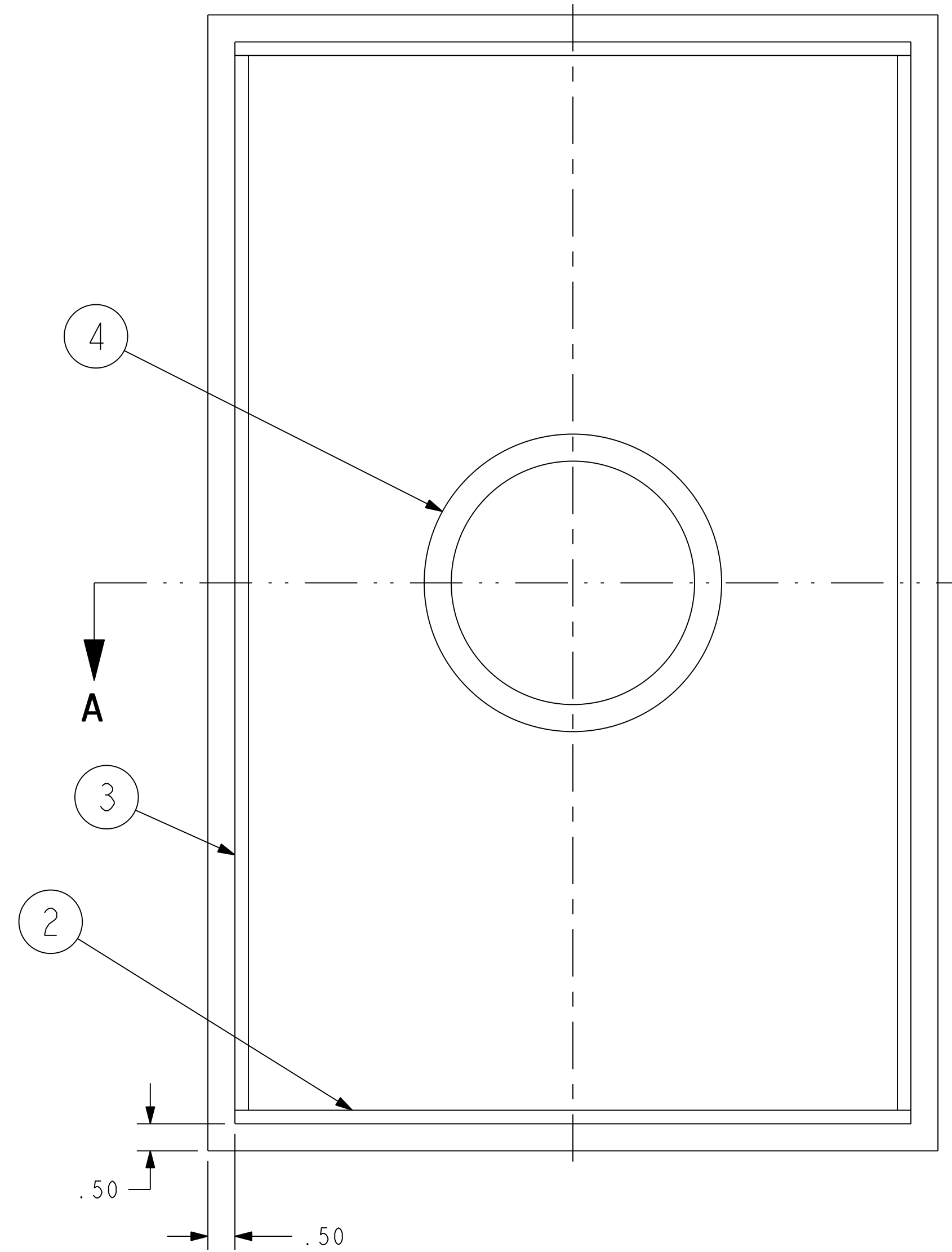
SECTION A-A



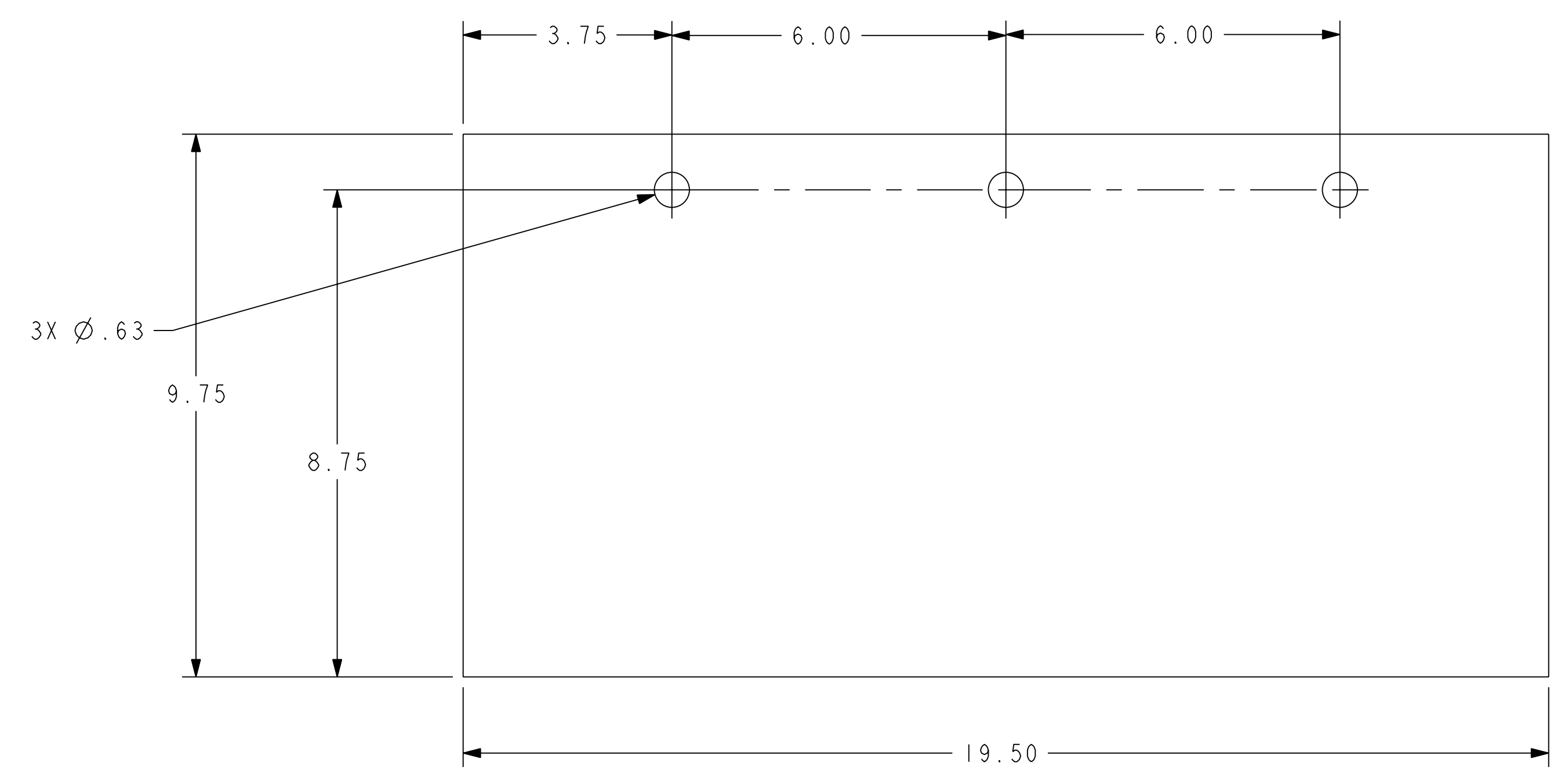
1  
PART  
2 REQ'D  
SCALE 0.500



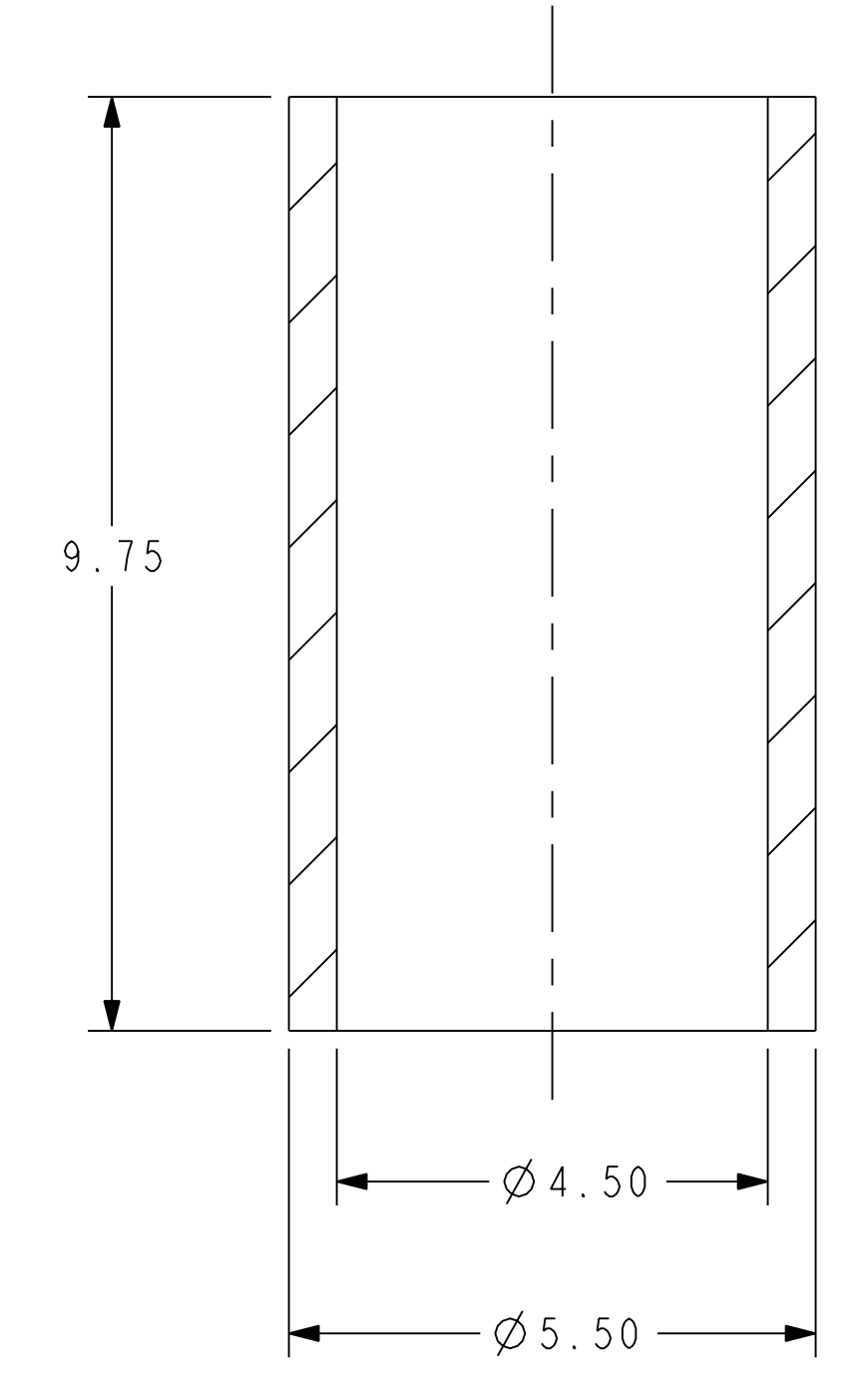
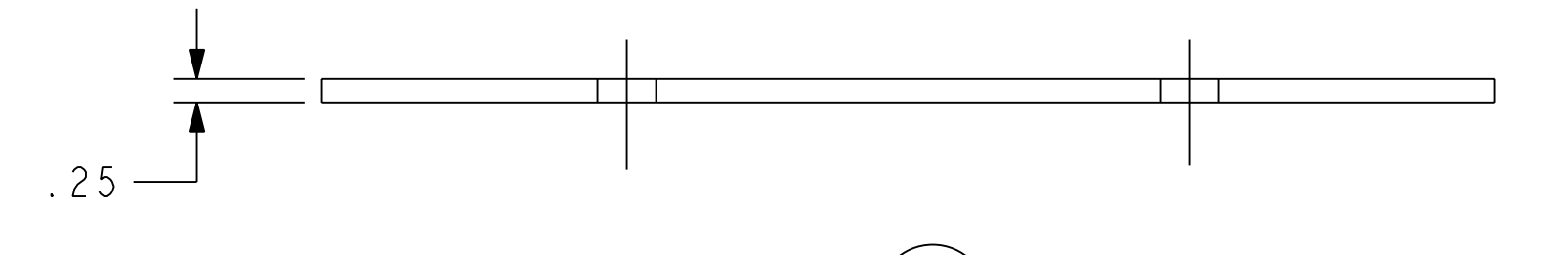
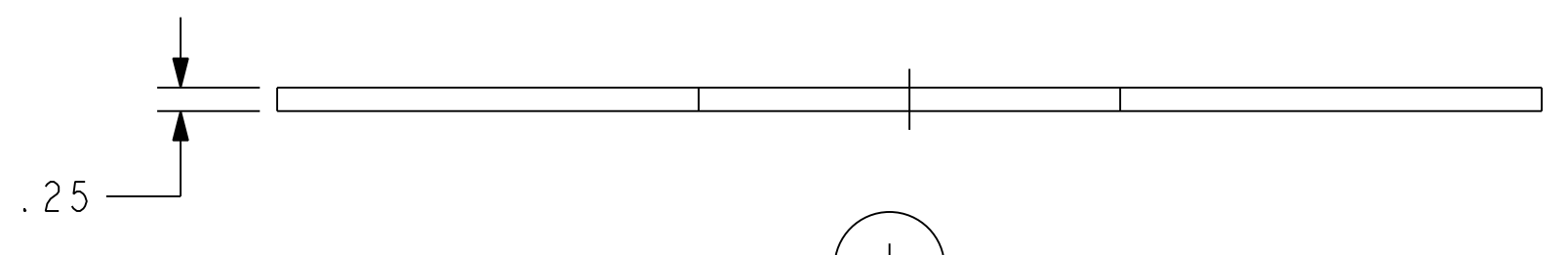
2  
PART  
4 REQ'D  
SCALE 0.500



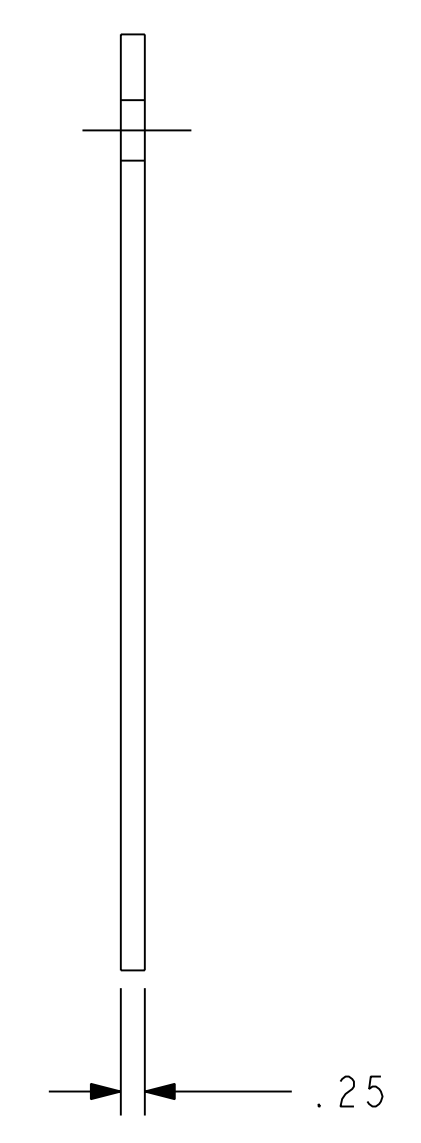
01  
ASSEMBLY  
2 REQ'D  
SCALE 0.500



3  
PART  
4 REQ'D  
SCALE 0.500



4  
PART  
2 REQ'D  
SCALE 0.500



**RELEASED FOR  
FABRICATION / INSTALLATION**  
PPPL Drafting:

PART NO.	DRAWING NO	NOMENCLATURE OR DESCRIPTION	MATERIAL	QTY REQ'D
4	SE1715-002-4	TUBE, TEST PANEL	G10	1
3	SE1715-002-3	PLATE, TEST PANEL SIDES	G10	2
2	SE1715-002-2	PLATE, TEST PANEL FRONT AND BACK	G10	2
1	SE1715-002-1	PLATE, TEST PANEL BOTTOM	G10	1
-	SE1715-002-01	CRYOSTAT TEST PANEL ASSEMBLY	--	-

PARTS LIST

COMPUTER GENERATED DRAWING MANUAL CHANGES NOT PERMITTED	CENTRAL FILES: UNLESS OTHERWISE SPECIFIED	PRINCETON PLASMA PHYSICS LABORATORY PRINCETON UNIVERSITY			
DO NOT VERIFY INFORMATION BY SCALING DRAWING	DIMENSIONS ARE IN INCHES MACHINE SURFACES UNLESS OTHERWISE SPECIFIED	NATIONAL COMPACT STELLATOR EXPERIMENT			
PRO E	BREAK SHARP EDGES .005/.020	CRYOSTAT TEST PANEL ASSEMBLY AND DETAILS			
WEIGHT 1238.5 lbs	TOLERANCES NON-CUMULATIVE	DSN: M. MESSINEO	10-06-05	DRAWING NO:	
MODEL NAME SE1715-002-01	DECIMAL-INCH FRACTIONS	CHK: L. MORRIS	10-06-05	SE1715-002	
WELDING ENGINEER	NEXT ASSEMBLY	ENGR: G. GETTELFINGER	10-06-05	SHEET 1 OF 1	
		SUPV: J. SIEGEL	10-06-05	REV 0	

RELEASE LEVEL: FABRICATION  
DWG VERSION NO: 2

NCSX-SE1715-002