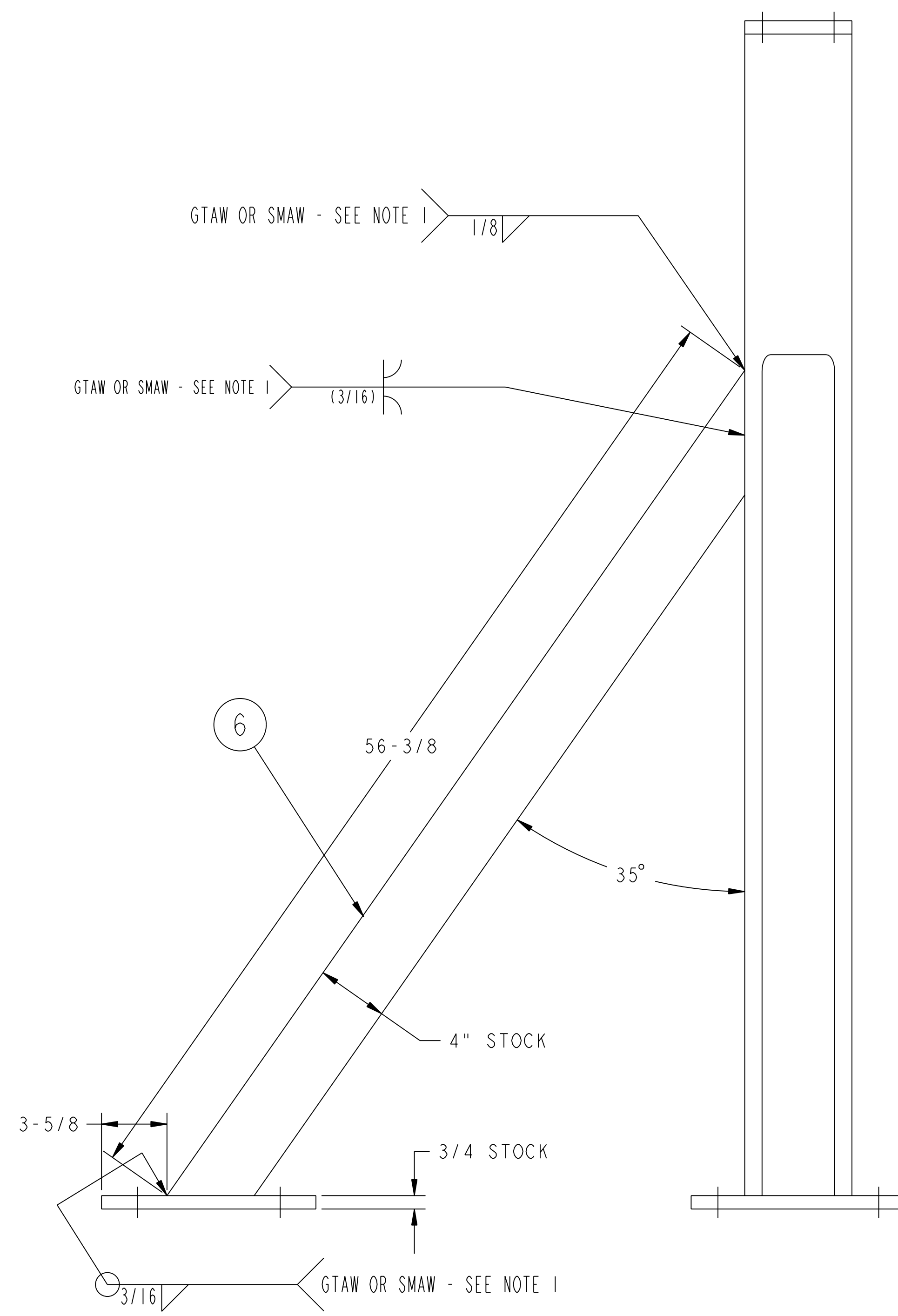
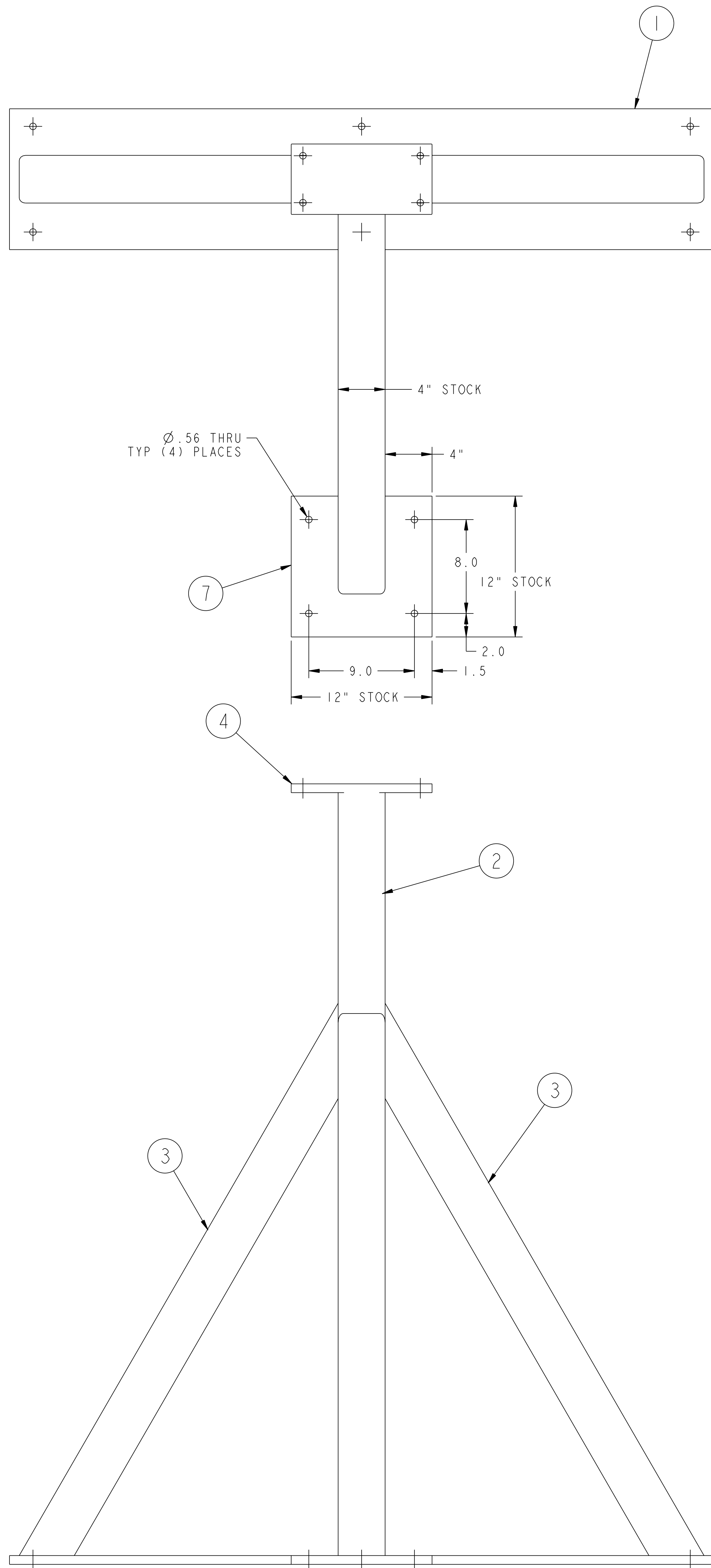


NO.	REVISION	BY	CH	SUP	APPROVED	DATE



02 ASSEMBLY SUPPORT STAND WELDMENT - WITH OUTRIGGER
 REFER TO 01 ASSEMBLY FOR DIMENSIONS AND WELDMARKS NOT SHOWN HERE

**RELEASED FOR
 FABRICATION / INSTALLATION**
 PPPL Drafting:

FOR BILL OF MATERIAL AND NOTES SEE SHEET 1

COMPUTER GENERATED DRAWING MANUAL CHANGES NOT PERMITTED Pro E	CENTRAL FILES:	PRINCETON PLASMA PHYSICS LABORATORY NATIONAL COMPACT STELLATOR EXPERIMENT			
	UNLESS OTHERWISE SPECIFIED	EXTERNAL FLUX LOOPS VACUUM VESSEL SUPPORT STAND FIXTURE ASSEMBLY WELDMENTS AND DETAILS			
DO NOT VERIFY INFORMATION BY SCALING DRAWING	DIMENSIONS ARE IN INCHES MACHINE SURFACES BREAK SHARP EDGES .005/.020	TOLERANCES NON-CUMULATIVE	DSN: L. MORRIS	9-28-05	DRAWING NO:
NEXT ASSEMBLY	DECIMAL-INCH FRACTIONS	CHK: T. BROWN	9-28-05	SE184-002	
	.XX +/- .000 0°-120° +/- .010 .XXX +/- .005 120°-120° +/- .010 ANGULAR +/- .0°-15° OVER 120° +/- .120	ENGR: T. BROWN	9-28-05		
WEIGHT	333.0 lbs	WELDING ENGINEER	L. DUDEK 10-18-05	SUPV: J. SIEGEL	9-28-05
MODEL NAME	SE184-002-09			SHEET 2 OF 3	REV 3
RELEASE LEVEL: Fabrication DWG VERSION NO: 0		NCSX-ASSY-FORMAT.E			

NCSX-SE184-002

