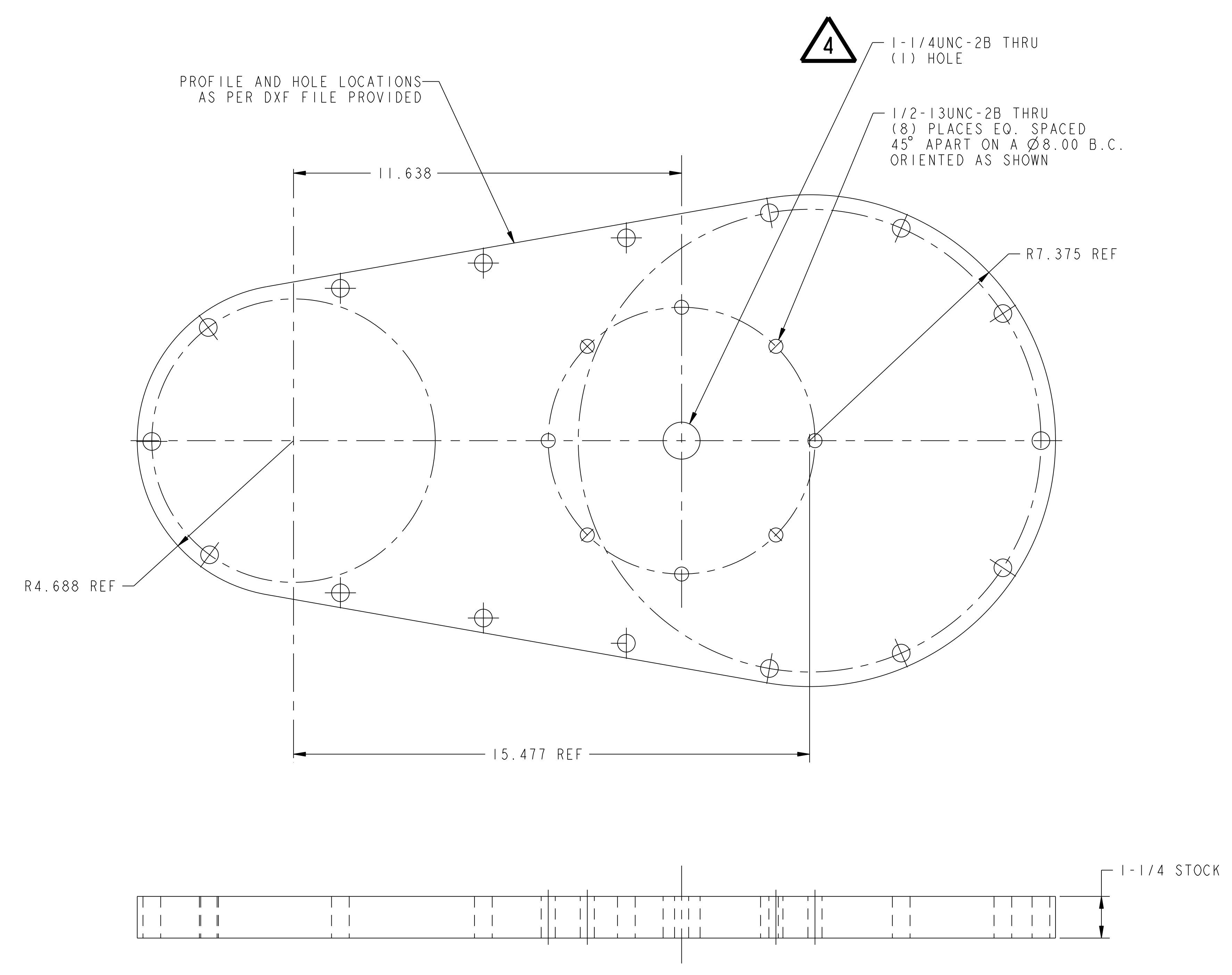
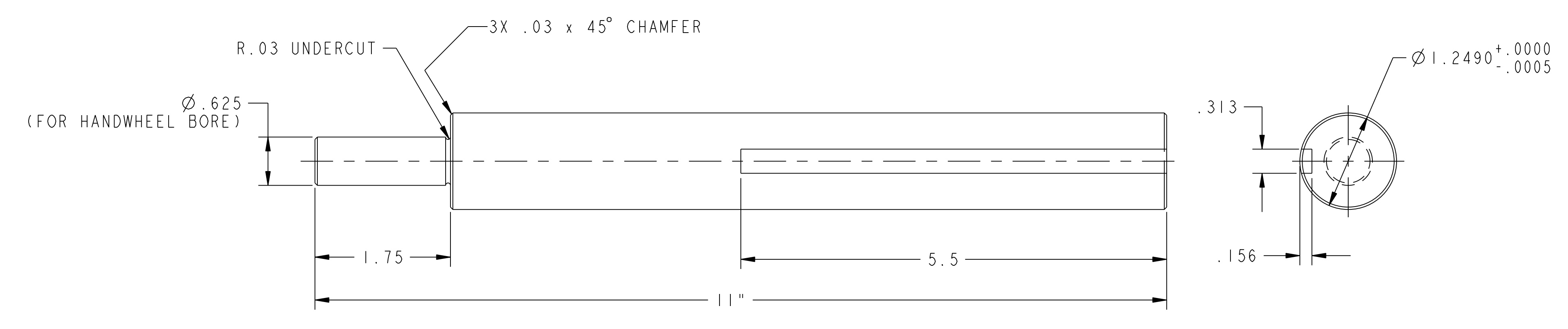


NO.	REVISION	BY	CH	SUP	APPROVED	DATE
1	REVISED PER ECN-5028	LM	TB	JS	T. BROWN	10-18-05
2	REVISED PER ECN-5029	LM	TB	JS	T. BROWN	10-19-05
3	REVISED PER ECN-5099	LM	TB	JS	T. BROWN	3-29-06
4	REVISED PER ECN-5370	LM	TB	JS	T. BROWN	6-13-08



1 PORT 12 BLANK-OFF COVER



2 WORM AXLE

RELEASED FOR FABRICATION / INSTALLATION
PPPL Drafting

2	THIS DWG	WORM AXLE	ASTM A36	1
1	THIS DWG	PORT 12 BLANK-OFF COVER	ASTM A36	2
PART NO.	DRAWING NO	NOMENCLATURE OR DESCRIPTION	MATERIAL	QTY REOD
PARTS LIST				
COMPUTER GENERATED DRAWING DRAWING CHANGES NOT PERMITTED		CENTRAL FILES: UNLESS OTHERWISE SPECIFIED	PRINCETON PLASMA PHYSICS LABORATORY PRINCETON UNIVERSITY	
Pro E		DIMENSIONS ARE IN INCHES MACHINE SURFACES	EXTERNAL FLUX LOOPS VACUUM VESSEL SUPPORT STAND FIXTURE ASSEMBLY DETAILS	
DO NOT VERIFY INFORMATION BY SCALING DRAWING		BREAK SHARP EDGES .005/.020	TOLERANCES NON-CUMULATIVE	
WEIGHT		DECIMAL-INCH FRACTIONS	DSN: L. MORRIS	9-28-05
MODEL NAME SE184-003-1		CHK: T. BROWN	9-28-05	DRAWING NO: SE184-003
NEXT ASSEMBLY		ENGR: T. BROWN	9-28-05	SHEET 1 OF 1
WELDING ENGINEER		SUPV: J. SIEGEL	9-28-05	REV 4

RELEASE LEVEL: Fabrication
DWG VERSION NO: 3

NCSX-SE184-003