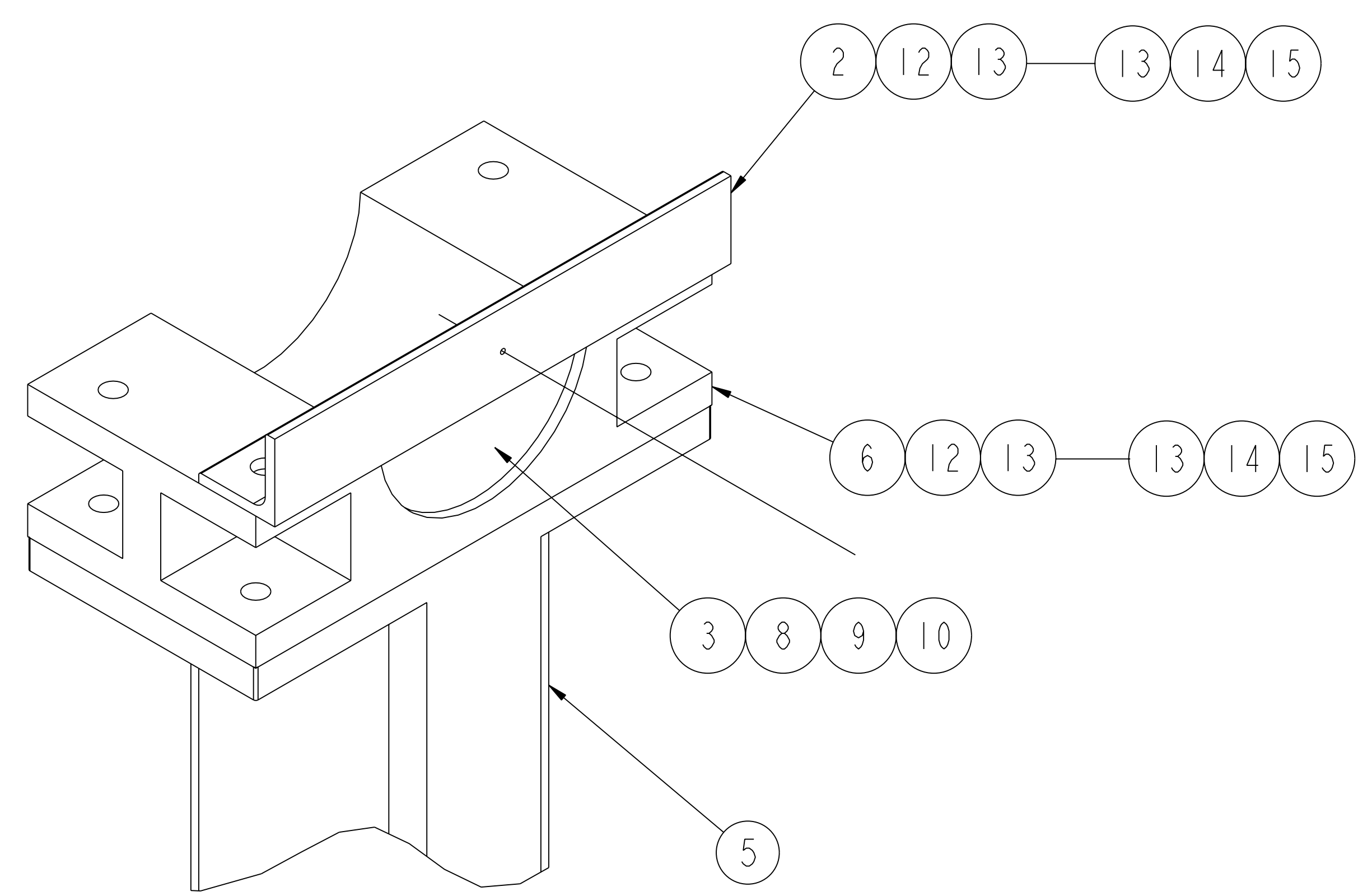
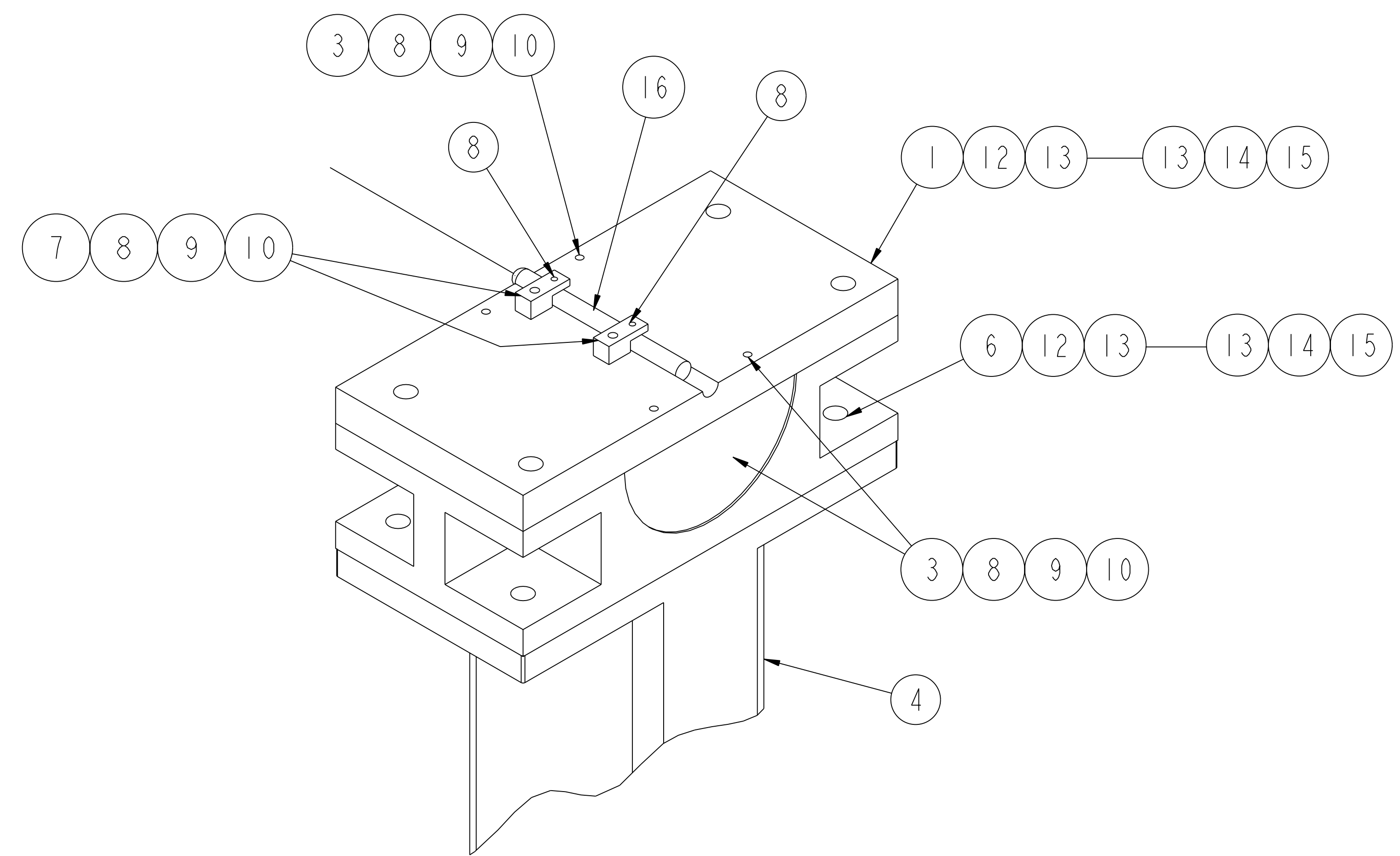


NO.	REVISION	BY	CH	SUP	APPROVED	DATE



DETAIL B
SCALE 0.500



DETAIL A
SCALE 0.500



**RELEASED FOR
FABRICATION / INSTALLATION**
PPPL Drafting:

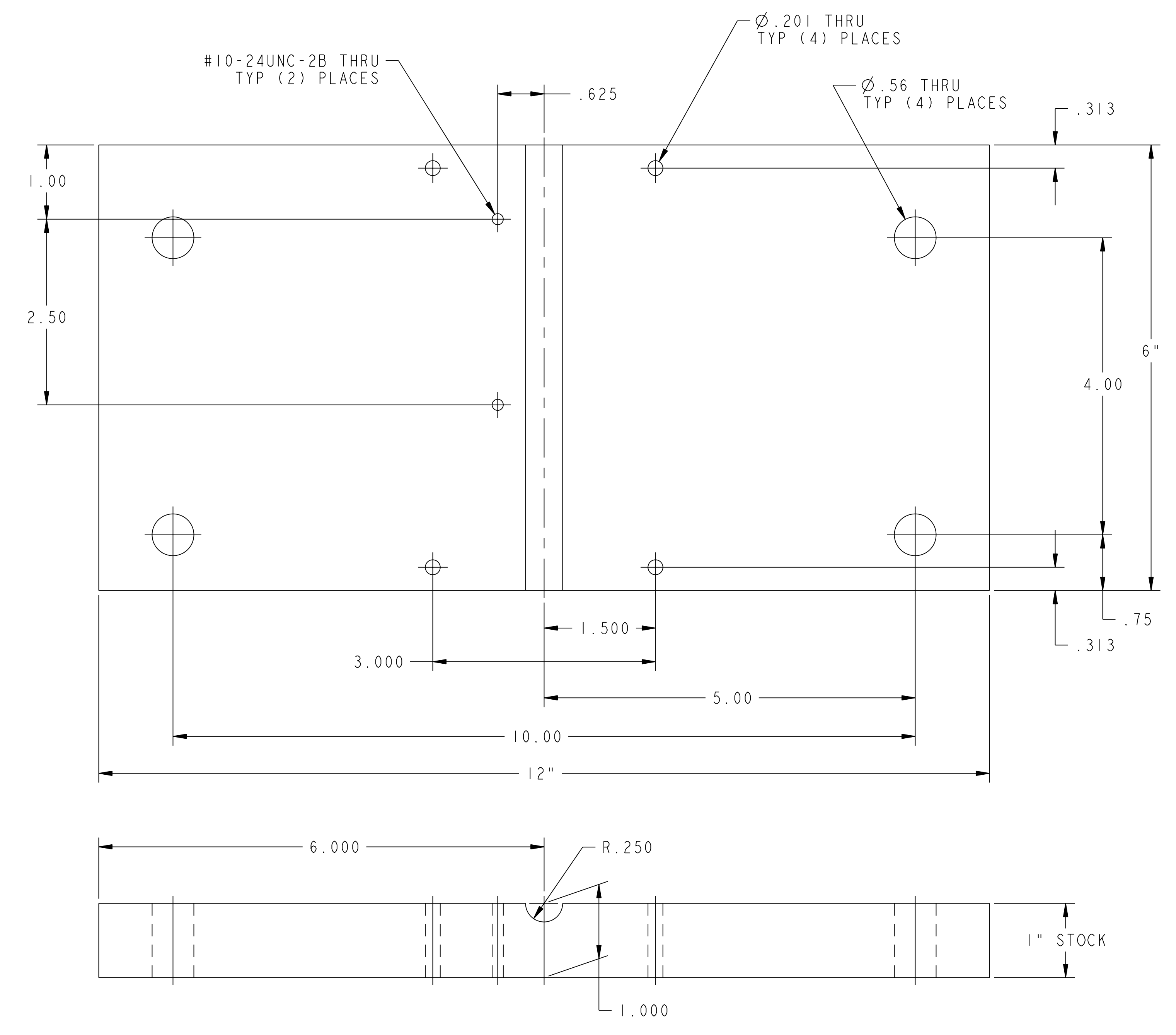
QTY	PART NO	DRAWING NO	NOMENCLATURE OR DESCRIPTION	MATERIAL	QTY REQD
1	16	COMM	LASER PEN POINTER - CLASS IIIA		
28	15	COMM	1/2-13UNC-2B HEX NUT	C'STL - ZN PLT	
28	14	COMM	1/2" SPLIT LOCK WASHER	C'STL - ZN PLT	
56	13	COMM	1/2" NOM FLAT WASHER	C'STL - ZN PLT	
14	12	COMM	1/2-13UNC-2A x 2 1/2" LG HEX HD CAP SCR	C'STL - ZN PLT	
16	11	COMM	1/2" CONCRETE ANCHOR BOLT/NUT 5 1/2" LG	STEEL	
8	10	COMM	#10 SPLIT LOCK WASHER	C'STL - ZN PLT	
8	9	COMM	#10 (Ø .190 NOM) FLAT WASHER	C'STL - ZN PLT	
10	8	COMM	#10-24UNC-2A x 1" LG HEX HD CAP SCR	C'STL - ZN PLT	
2	7	SE1851-021-3	LASER PEN RETAINER BLOCK	SEE DWG	
2	6	SE184-004-1	SUPPORT AXLE CRADLE BASE	SEE DWG	
1	5	SE184-002-02	SUPPORT STAND WELDMENT - WITH OUTRIGGER	SEE DWG	
1	4	SE184-002-01	SUPPORT STAND WELDMENT - WITH BRACKET	SEE DWG	
3	3	THIS DWG - SHEET 2	BISCUIT	ASTM A36	
1	2	THIS DWG - SHEET 2	LASER POINTER TARGET ANGLE	ASTM A36	
1	1	THIS DWG - SHEET 2	LASER POINTER MOUNTING PLATE	ASTM A36	
1	—	THIS DWG	FIXTURE ASSEMBLY ALIGNMENT		

COMPUTER GENERATED DRAWING CHANGES NOT PERMITTED Pro E	CENTRAL FILES: UNLESS OTHERWISE SPECIFIED	PRINCETON PLASMA PHYSICS LABORATORY PRINCETON UNIVERSITY			
DO NOT VERIFY INFORMATION BY SCALING DRAWING	DIMENSIONS ARE IN INCHES MACHINE SURFACES BREAK SHARP EDGES .005/.020	NATIONAL COMPACT STELLARATOR EXPERIMENT			
WEIGHT 1238.5 lbs	TOLERANCES NON-CUMULATIVE	DSN: L. MORRIS	2-20-06	DRAWING NO:	
MODEL NAME SE184-007-01	DECIMAL-INCH FRACTIONS	CHK: T. BROWN	2-20-06	SE184-007	
WELDING ENGINEER	NEXT ASSEMBLY	ENGR: T. BROWN	2-20-06	SHEET 1 OF 2	REV 0
		SUPV: J. SIEGEL	2-20-06		

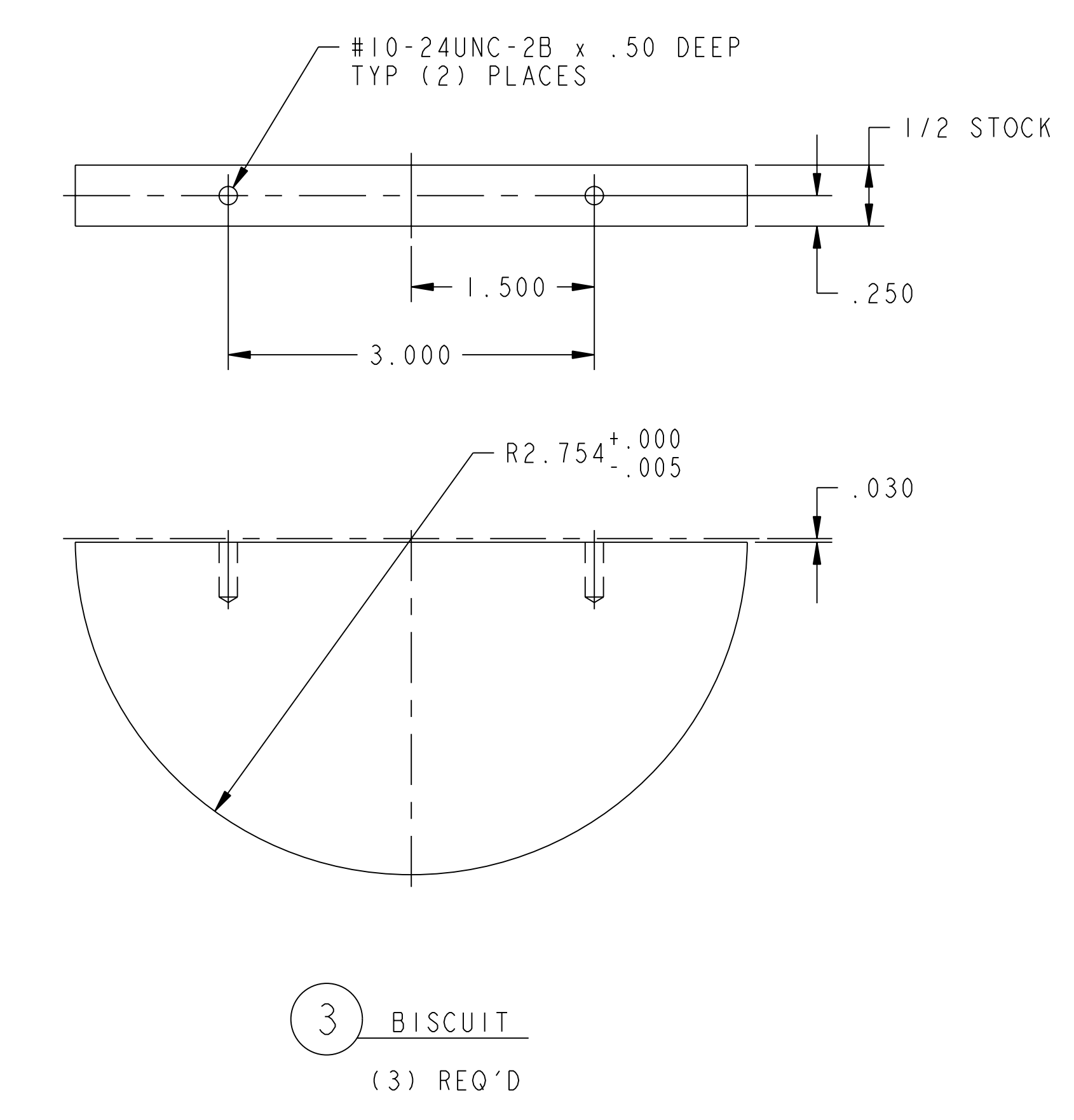
RELEASE LEVEL: Fabrication
DWG VERSION NO: 0

NCSX-SE184-007

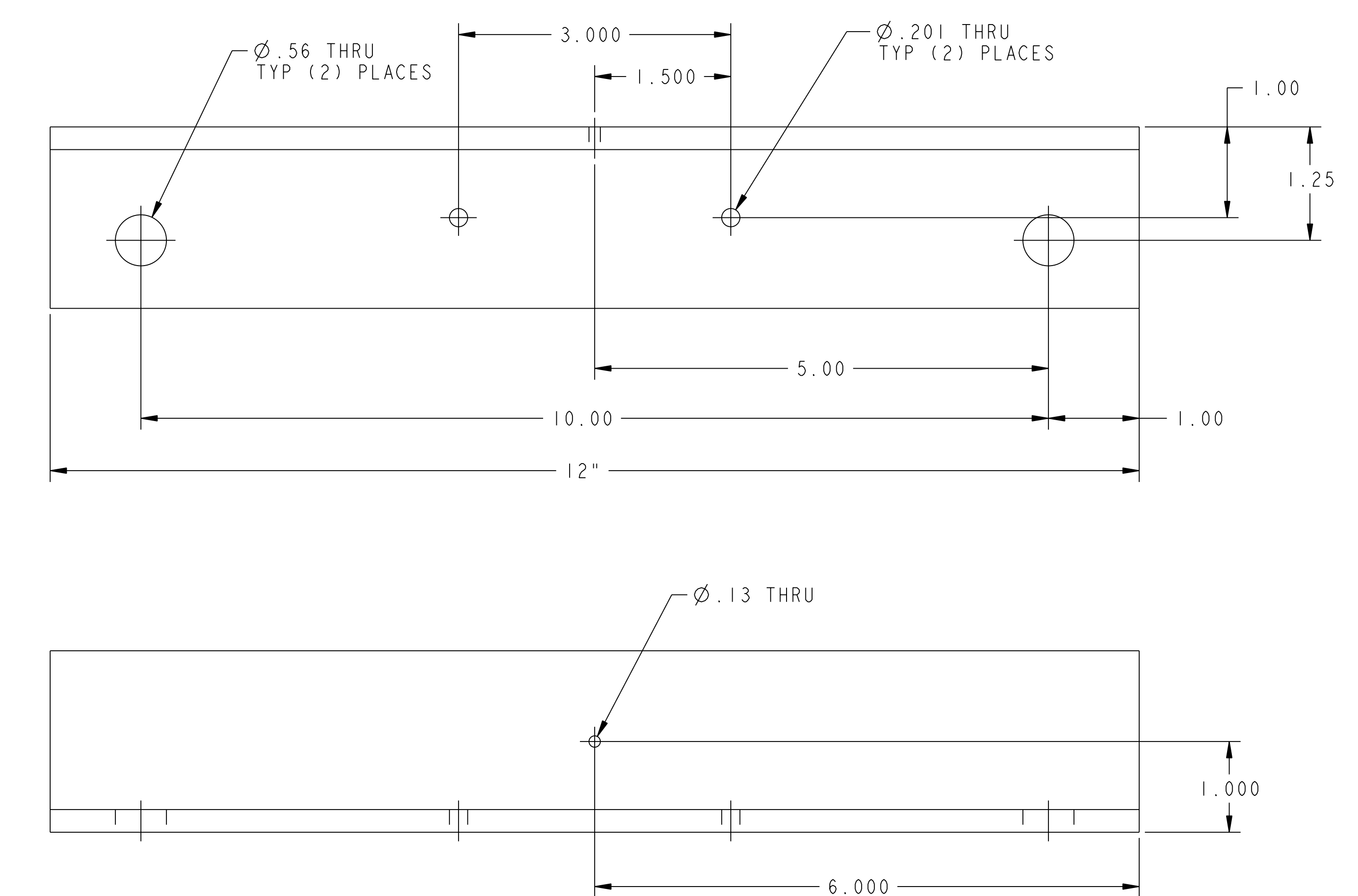
NO.	REVISION	BY	CH	SUP	APPROVED	DATE



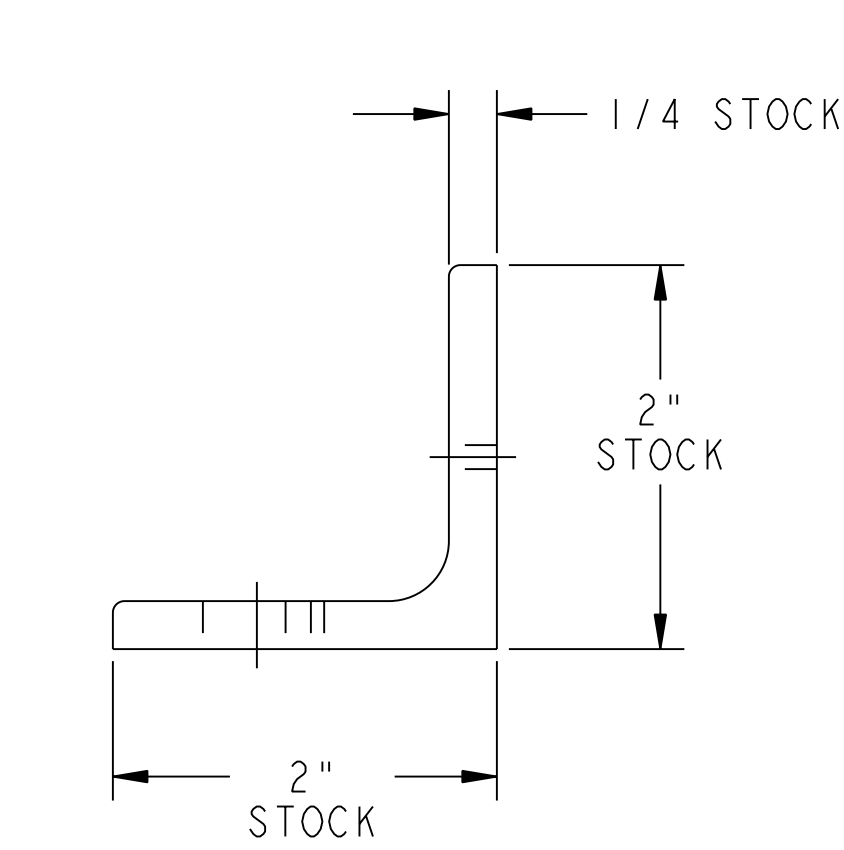
1 LASER POINTER MOUNTING PLATE
(1) REQ'D



3 BISCUIT
(3) REQ'D



2 LASER POINTER TARGET ANGLE
(1) REQ'D



**RELEASED FOR
FABRICATION / INSTALLATION**
PPPL Drafting:

FOR NOTES AND BILL OF MATERIAL SEE SHEET 1

RELEASE LEVEL: Fabrication
DWG VERSION NO: 0

WEIGHT	+238.5 lbs
MODEL NAME	SE184-007-01
WELDING ENGINEER	

COMPUTER GENERATED DRAWING MANUAL CHANGES NOT PERMITTED Pro E	CENTRAL FILES: UNLESS OTHERWISE SPECIFIED	PRINCETON PLASMA PHYSICS LABORATORY PRINCETON UNIVERSITY NATIONAL COMPACT STELLARATOR EXPERIMENT			
DO NOT VERIFY INFORMATION BY SCALING DRAWING	DIMENSIONS ARE IN INCHES MACHINE SURFACES BREAK SHARP EDGES .005/.020	EXTERNAL FLUX LOOPS VACUUM VESSEL SUPPORT STAND FIXTURE ASSEMBLY ALIGNMENT			
NEXT ASSEMBLY	TOLERANCES NON-CUMULATIVE DECIMAL-INCH FRACTIONS .X ±.000 .XX ±.005 ANGULAR ±.0°-15° OVER 120° ±.1°	DSN: L. MORRIS	2-20-06	DRAWING NO:	
		CHK: T. BROWN	2-20-06	SE184-007	
		ENGR: T. BROWN	2-20-06		
		SUPV: J. SIEGEL	2-20-06	SHEET 2 OF 2	REV 0