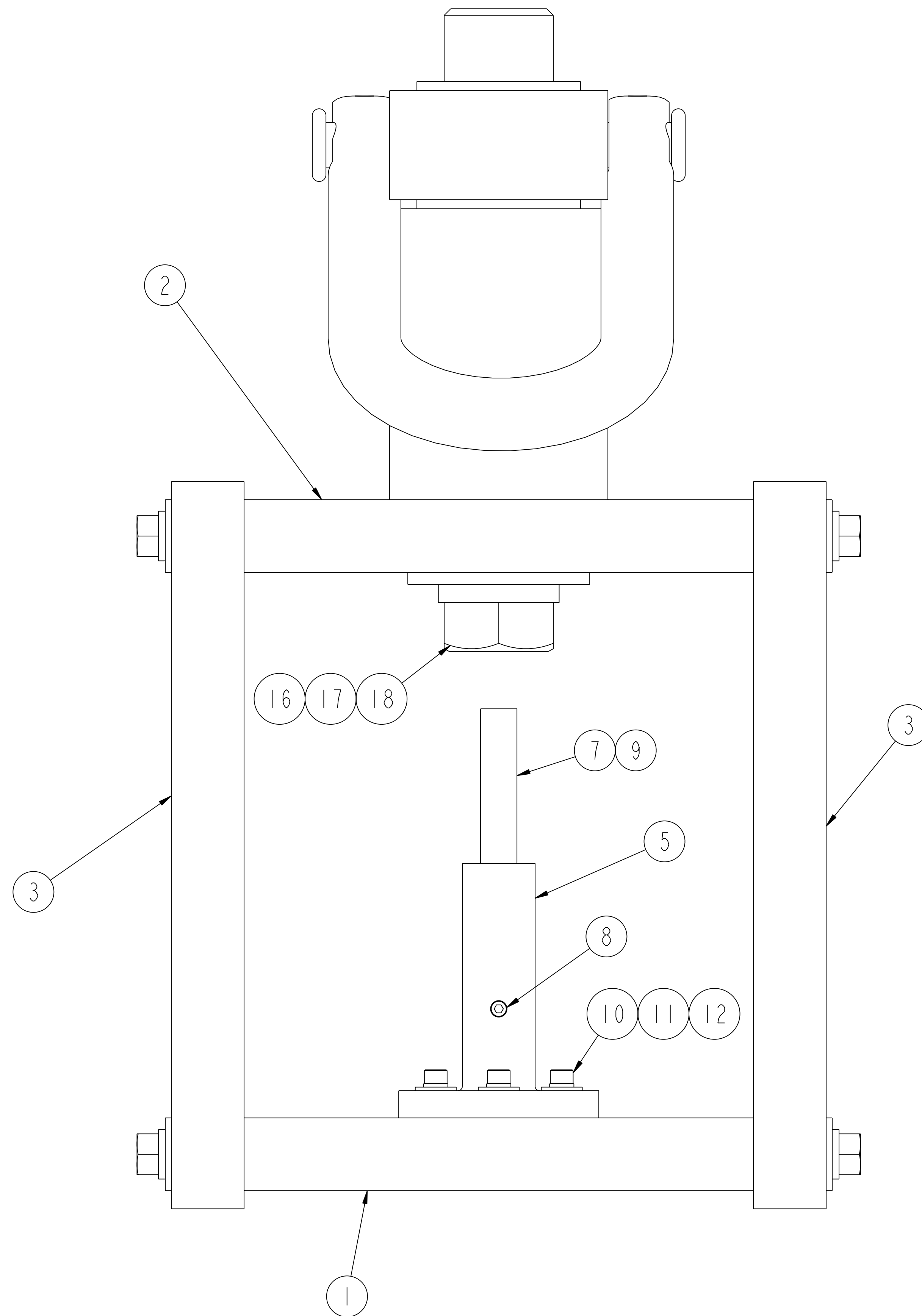
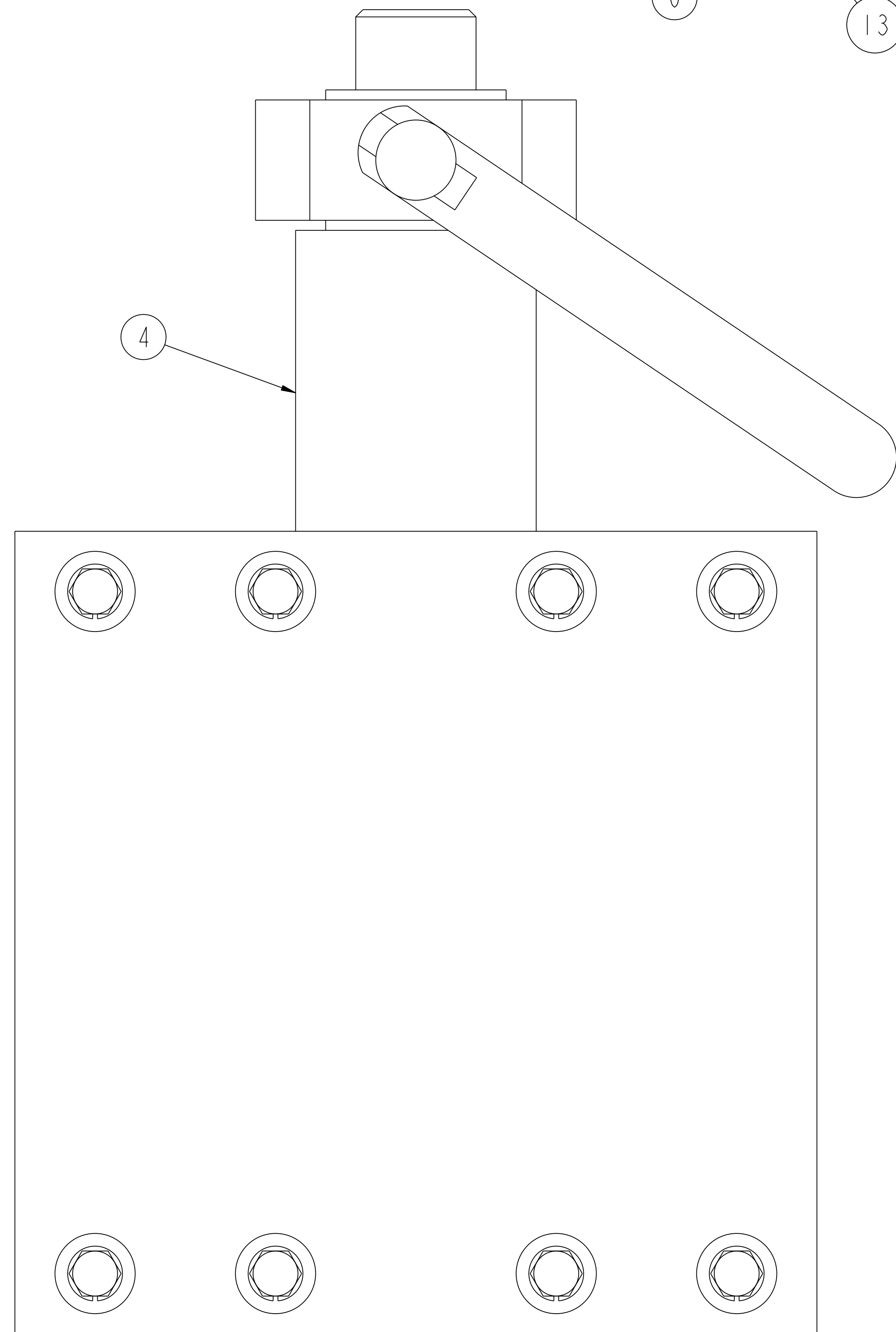
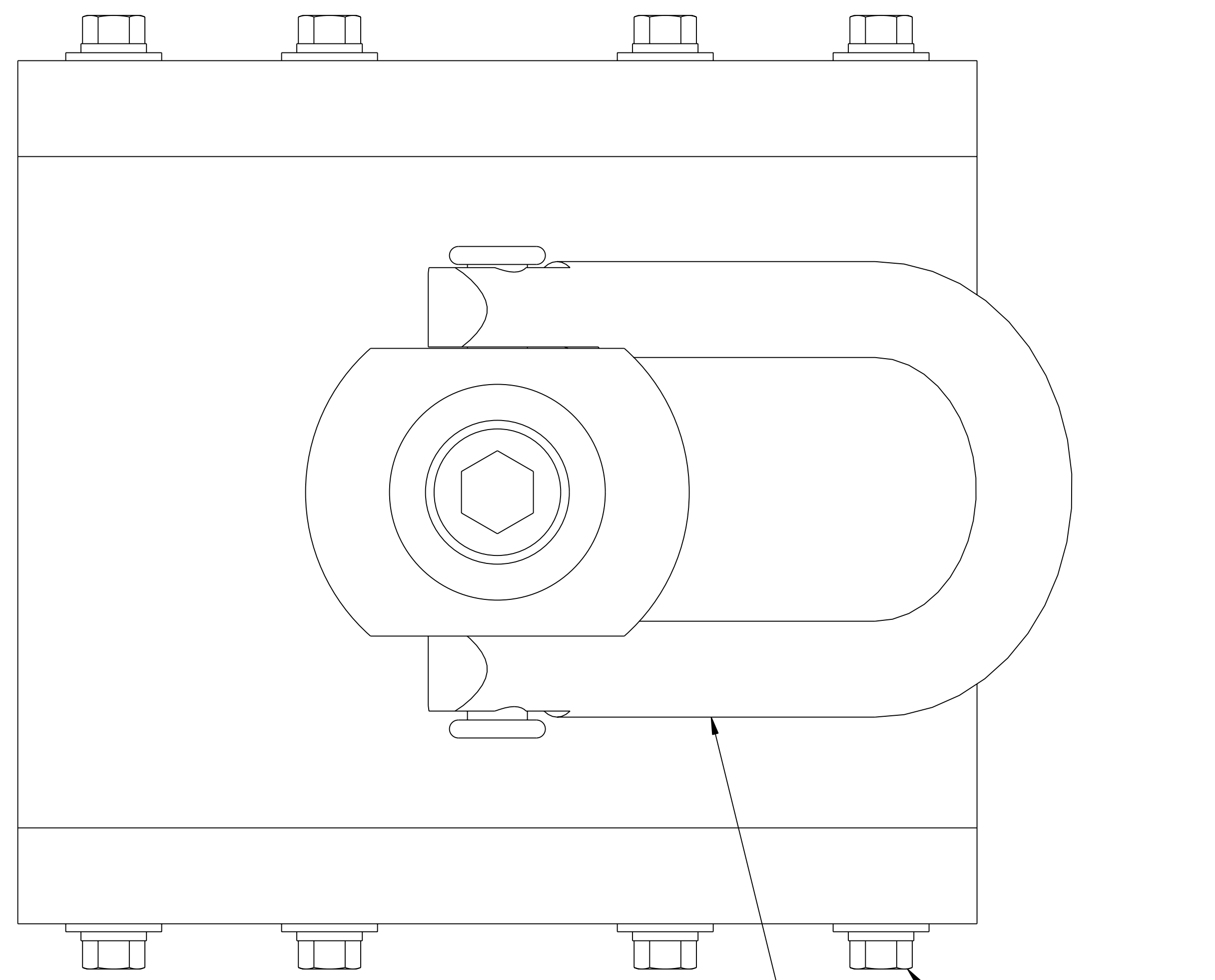


NO.	REVISION	BY	CH	SUP	APPROVED	DATE



**RELEASED FOR  
FABRICATION / INSTALLATION**  
PPPL Drafting:

1	18	COMM	1"-8UNC-2A x 2" LG HEX HD CAP SCREW	ASTM A325	
1	17	COMM	1" SPLIT LOCK WASHER	C'STL - ZN PLT	
1	16	COMM	1" FLAT WASHER	C'STL - ZN PLT	
16	15	COMM	3/8-16UNC-2A x 2" LG HEX HD CAP SCR	ASTM A325	
16	14	COMM	3/8 SPLIT LOCK WASHER	C'STL - ZN PLT	
16	13	COMM	3/8 FLAT WASHER	C'STL - ZN PLT	
3	12	COMM	#10-24UNC-2A x 1" LG HEX SCT CAP SCR	C'STL - ZN PLT	
3	11	COMM	#10 SPLIT LOCK WASHER	C'STL - ZN PLT	
3	10	COMM	#10 FLAT WASHER	C'STL - ZN PLT	
1	9	COMM	#8-32UNC-2A x 1/2" LG HEX SCT CAP SCR	C'STL - ZN PLT	
1	8	COMM	#6-32UNC-2A x 1/2" LG HEX SCT CAP SCR	C'STL - ZN PLT	
1	7	COMM	LASER PEN POINTER - CLASS 111A		
1	6	COMM	HOIST RING - 10,000# CAP. McMASTER-CARR #3145T34 OR EQUIV.	ALLOY STEEL	
1	5	SE184-009-5	LASER POINTER MOUNTING FLANGE	SEE DWG	
1	4	SE184-009-4	LIFTING CYLINDER	SEE DWG	
2	3	SE184-009-3	LIFTING SIDE PLATE	SEE DWG	
1	2	SE184-009-2	LIFTING TOP PLATE	SEE DWG	
1	1	SE184-009-1	LIFTING BASE PLATE	SEE DWG	
01	ASSY	THIS DWG	HOIST RING MOUNT LIFTING ASSEMBLY W/ LASER POINTER		1

QTY	PART NO.	DRAWING NO.	NOMENCLATURE OR DESCRIPTION	MATERIAL	QTY RECD
PARTS LIST					
COMPUTER GENERATED DRAWING CHANGES NOT PERMITTED		CENTRAL FILES:		PRINCETON PLASMA PHYSICS LABORATORY	
Pro E		UNLESS OTHERWISE SPECIFIED		NATIONAL COMPACT STELLARATOR EXPERIMENT	
DO NOT VERIFY INFORMATION BY SCALING DRAWING		DIMENSIONS ARE IN INCHES MACHINE SURFACES UNLESS OTHERWISE SPECIFIED		EXTERNAL FLUX LOOPS	
		BREAK SHARP EDGES .005/.020		VACUUM VESSEL SUPPORT STAND FIXTURE ASSEMBLY	
		TOLERANCES NON-CUMULATIVE		HOIST RING MOUNT LIFTING ASSEMBLY WITH LASER POINTER	
NEXT ASSEMBLY		DECIMAL-INCH FRACTIONS	DSN: L. MORRIS	3-29-06	DRAWING NO:
		.XX +/- .000	0"-.125" +/- .010	CHK: T. BROWN	3-29-06
		.XXX +/- .005	.125"-.250" +/- .010	ENGR: T. BROWN	3-29-06
		ANGULAR +/- .015	OVER .250" +/- .010	SUPV: J. SIEGEL	3-29-06
					SHEET 1 OF 1
					REV 0

**RELEASE LEVEL: Fabrication**  
**DWG VERSION NO: 1**

WEIGHT  
119.3 lbs

MODEL NAME  
SE184-008-01

WELDING ENGINEER