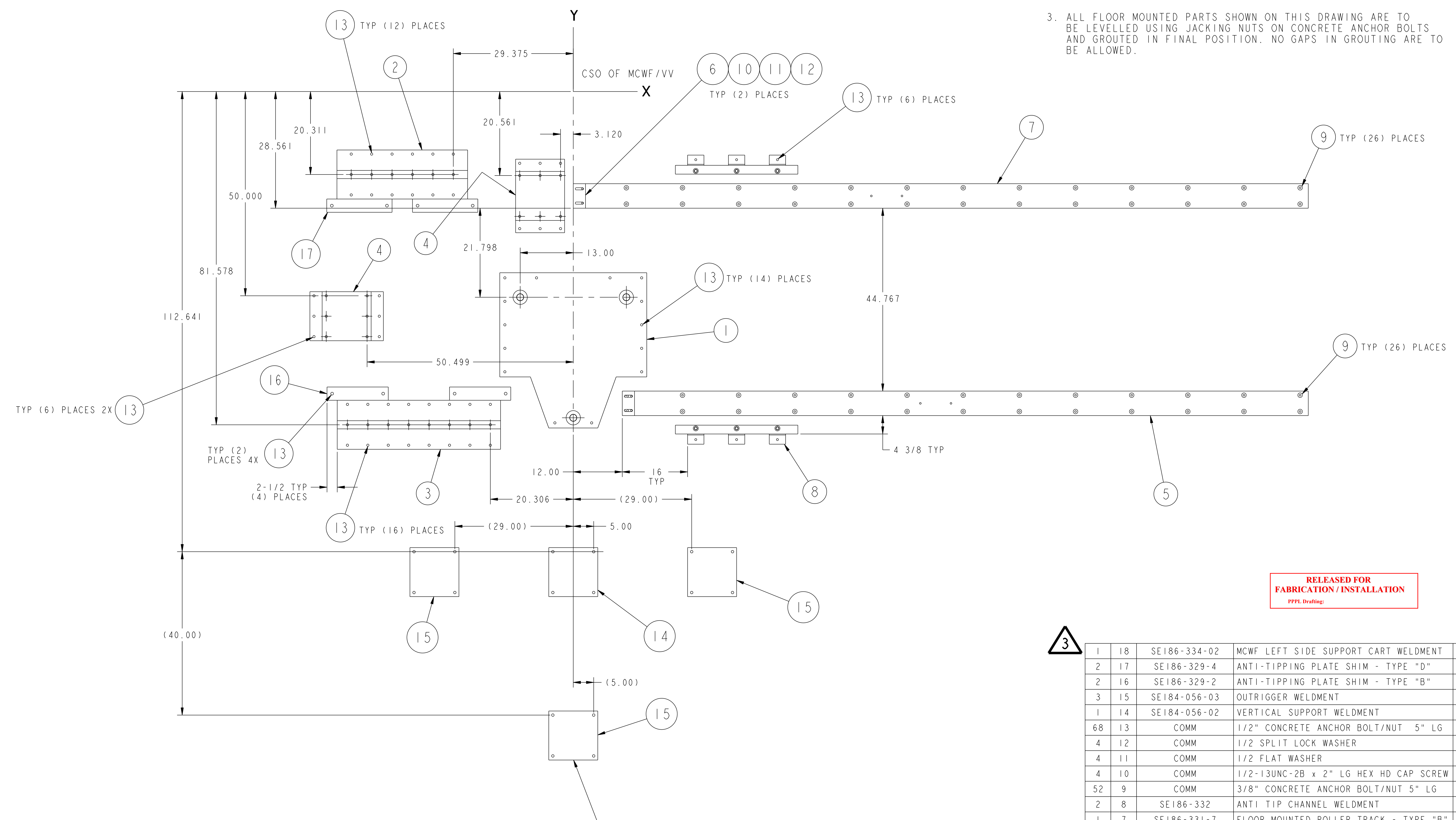


NO.	REVISION	BY	CH	SUP	APPROVED	DATE
1	REVISED PER ECN-5371	LM	TB	JS	T. BROWN	6-17-08
2	REVISED PER ECN-5384	LM	TB	JS	T. BROWN	7-1-08
3	REVISED PER ECN-5385	LM	TB	JS	T. BROWN	7-2-08

**NOTES**

- TOP OF CONCRETE ANCHOR BOLTS, PART 9, MUST NOT PROTRUDE ABOVE THE TOP SURFACE OF THE ROLLER TRACKS, PARTS 5 AND 7.
- ROLLER TRACKS, PARTS 5 AND 7, ARE TO BE FLAT AND LEVEL BY USING JACKING NUTS ON CONCRETE ANCHOR BOLTS. TRACKS ARE TO BE SET IN FINAL POSITION ON GROUTING. NO GAPS IN GROUTING ARE TO BE ALLOWED. THE LONG SIDES OF EACH TRACK MUST BE KEPT FREE OF EXCESS GROUT TO AVOID INTERFERENCE WITH HILMAN ROLLER ACCU-GUIDE SYSTEM ON THE FINAL ASSEMBLY (REFERENCE DRAWING SE186-300).
- ALL FLOOR MOUNTED PARTS SHOWN ON THIS DRAWING ARE TO BE LEVELLED USING JACKING NUTS ON CONCRETE ANCHOR BOLTS AND GROUTED IN FINAL POSITION. NO GAPS IN GROUTING ARE TO BE ALLOWED.



FOR CLARITY OF VIEW, ONLY THE BASE PLATES OF THE V.V. VERTICAL SUPPORT WELDMENT (SE184-056-02) AND V.V. OUTRIGGER WELDMENT (SE184-056-03) ARE SHOWN IN POSITION ON THE TEST CELL FLOOR.

**3**

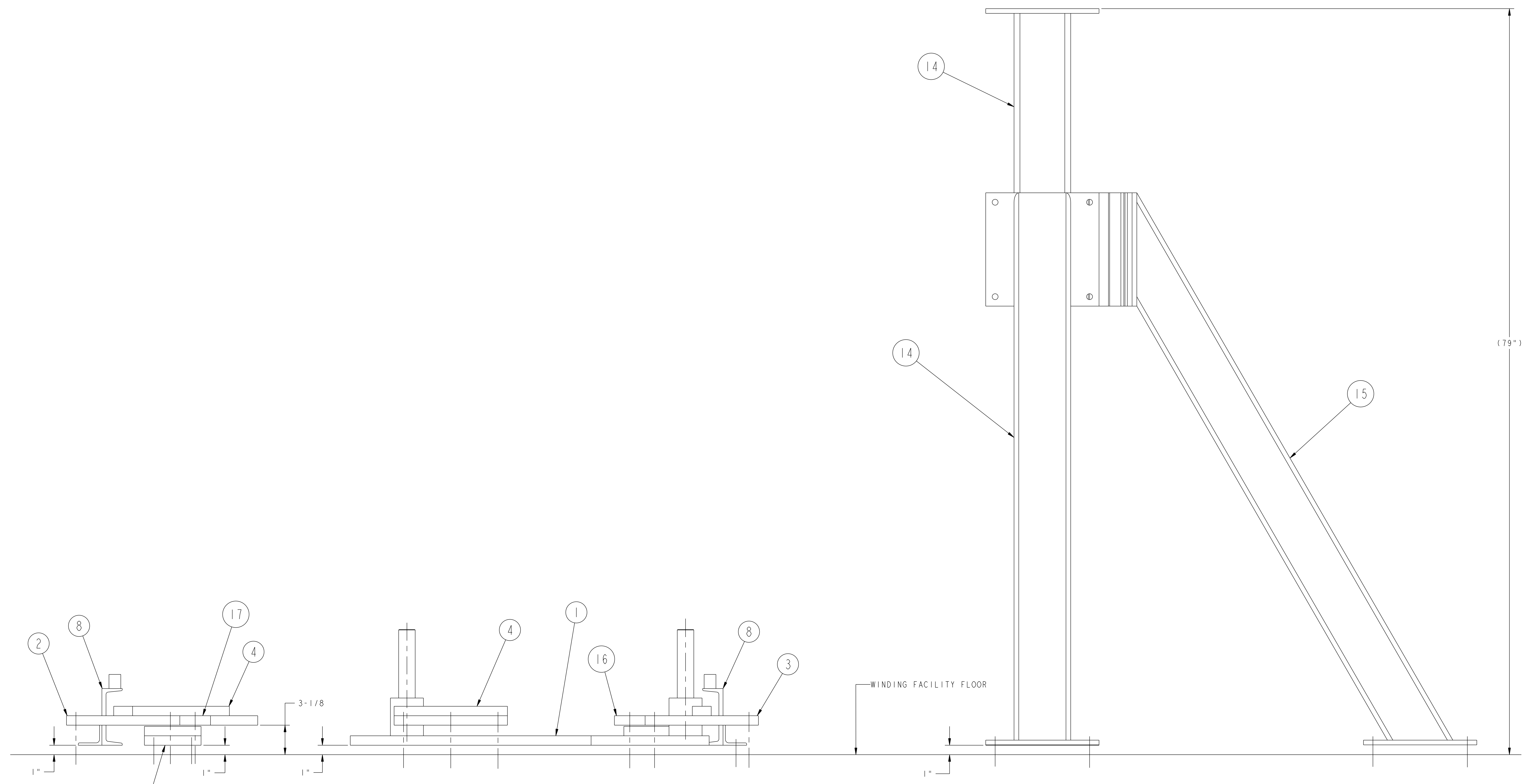
QTY	PART NO.	DRAWING NO.	NOMENCLATURE OR DESCRIPTION	MATERIAL	QTY RECD
1	18	SE186-334-02	MCWF LEFT SIDE SUPPORT CART WELDMENT	SEE DWG	
2	17	SE186-329-4	ANTI-TIPPING PLATE SHIM - TYPE "D"	SEE DWG	
2	16	SE186-329-2	ANTI-TIPPING PLATE SHIM - TYPE "B"	SEE DWG	
3	15	SE184-056-03	OUTRIGGER WELDMENT	SEE DWG	
1	14	SE184-056-02	VERTICAL SUPPORT WELDMENT	SEE DWG	
68	13	COMM	1/2" CONCRETE ANCHOR BOLT/NUT 5" LG	C'STL - ZN PLT	
4	12	COMM	1/2 SPLIT LOCK WASHER	C'STL - ZN PLT	
4	11	COMM	1/2 FLAT WASHER	C'STL - ZN PLT	
4	10	COMM	1/2-13UNC-2B x 2" LG HEX HD CAP SCREW	C'STL - ZN PLT	
52	9	COMM	3/8" CONCRETE ANCHOR BOLT/NUT 5" LG	C'STL - ZN PLT	
2	8	SE186-332	ANTI TIP CHANNEL WELDMENT	SEE DWG	
1	7	SE186-331-7	FLOOR MOUNTED ROLLER TRACK - TYPE "B"	SEE DWG	
2	6	SE186-331-5	STOP BLOCK	SEE DWG	
1	5	SE186-331-1	FLOOR MOUNTED ROLLER TRACK - TYPE "A"	SEE DWG	
2	4	SE186-327-03	FLOOR MOUNTED ANTI-TIPPING PLATE WELDMENT - TYPE "C"	SEE DWG	
1	3	SE186-327-02	FLOOR MOUNTED ANTI-TIPPING PLATE WELDMENT - TYPE "B"	SEE DWG	
1	2	SE186-327-01	FLOOR MOUNTED ANTI-TIPPING PLATE WELDMENT - TYPE "A"	SEE DWG	
1	1	SE184-051-01	BASE SUPPORT WELDMENT	SEE DWG	
			THIS DWG		
			FLOOR MOUNTED ROLLER TRACKS W/ VV BASE SUPPORT		

**RELEASED FOR FABRICATION/INSTALLATION**  
PPPL Drafting

WEIGHT	MODEL NAME	RELEASE LEVEL: Fabrication	DWG VERSION NO: 1
	SE185-300		
COMPUTER GENERATED DRAWING. MANUAL CHANGES NOT PERMITTED.		CENTRAL FILES: UNLESS OTHERWISE SPECIFIED	
DO NOT VERIFY INFORMATION BY SCALING DRAWING		PRINCETON PLASMA PHYSICS LABORATORY NATIONAL COMPACT STELLARATOR EXPERIMENT FIELD PERIOD ASSEMBLY FIELD PERIOD ASSEMBLY FIXTURE FLOOR MOUNTED ROLLER TRACKS W/ VV BASE SUPPORT	
NEXT ASSEMBLY		TOLERANCES NON-CUMULATIVE DECIMAL-INCH FRACTIONS XXX +/- .005 OVER 120" +/- .125	
WELDING ENGINEER		DSN: L. MORRIS 11-26-07 CHK: M. COLE 11-26-07 ENGR: T. BROWN 11-26-07 SUPV: J. SIEGEL 11-26-07	
		DRAWING NO: SE185-303 SHEET 1 OF 3 REV 3.2	

NCSX-SE185-303

NO.	REVISION	BY	CH	SUP	APPROVED	DATE



3

LEFT SIDE ELEVATION VIEW  
(WITH VV VERTICAL SUPPORT)

**RELEASED FOR  
FABRICATION / INSTALLATION**  
PPPL Drafting

FOR NOTES AND BILL OF MATERIAL SEE SHEET 1

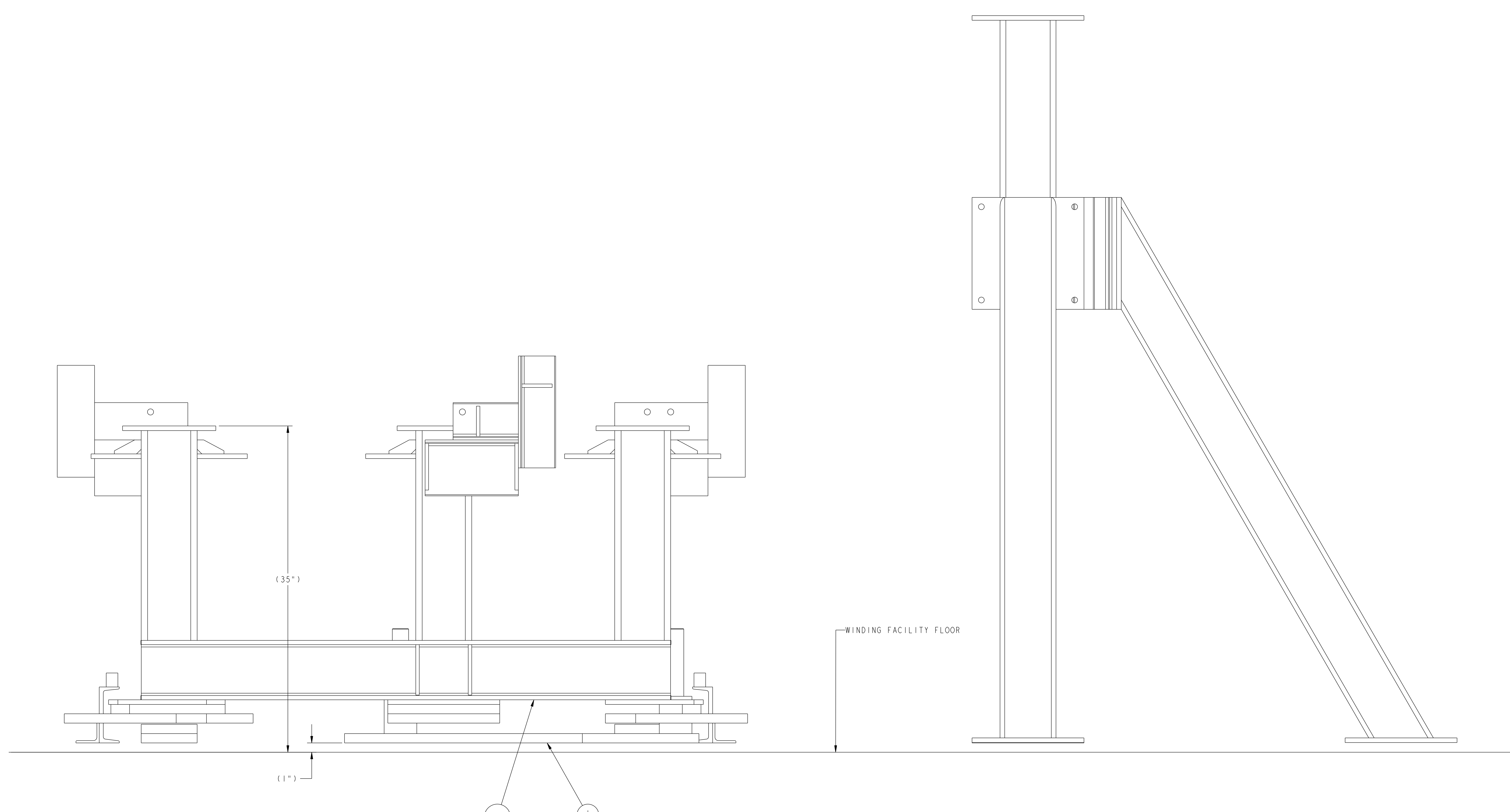
RELEASE LEVEL: Fabrication  
DWG VERSION NO: 1

WEIGHT  
MODEL NAME  
SE185-300  
WELDING  
ENGINEER

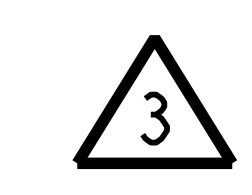
COMPUTER GENERATED DRAWING MANUAL CHANGES NOT PERMITTED Pro E	CENTRAL FILES: UNLESS OTHERWISE SPECIFIED	PRINCETON PLASMA PHYSICS LABORATORY PRINCETON UNIVERSITY <b>NATIONAL COMPACT STELLARATOR EXPERIMENT</b>	
DO NOT VERIFY INFORMATION BY SCALING DRAWING	DIMENSIONS ARE IN INCHES MACHINE SURFACES BREAK SHARP EDGES .005/.020	FIELD PERIOD ASSEMBLY FIELD PERIOD ASSEMBLY FIXTURE FLOOR MOUNTED ROLLER TRACKS W/ VV BASE SUPPORT	
NEXT ASSEMBLY	TOLERANCES NON-CUMULATIVE DECIMAL-INCH FRACTIONS .X ±.000 0°-12° ±.010 .XX ±.030 12°-12° ±.110 .XXX ±.005 12°-120° ±.114 ANGULAR ±.0°-15° OVER 120° ±.112	DSN: L. MORRIS 7-2-08 CHK: T. BROWN 7-2-08 ENGR: T. BROWN 7-2-08 SUPV: J. SIEGEL 7-2-08	DRAWING NO: <b>SE185-303</b> SHEET 2 OF 3 REV 3.2

NCSX-SE185-303

NO.	REVISION	BY	CH	SUP	APPROVED	DATE



18  
1 REF



LEFT SIDE ELEVATION VIEW  
(WITH MCWF LEFT SIDE SUPPORT CART)

RELEASED FOR  
FABRICATION / INSTALLATION  
PPPL Drafting

FOR NOTES AND BILL OF MATERIAL SEE SHEET 1

RELEASE LEVEL: Fabrication  
DWG VERSION NO: 1

WEIGHT	
MODEL NAME	SE185-300
WELDING ENGINEER	

COMPUTER GENERATED DRAWING MANUAL CHANGES NOT PERMITTED Pro E	CENTRAL FILES: UNLESS OTHERWISE SPECIFIED	PRINCETON PLASMA PHYSICS LABORATORY PRINCETON UNIVERSITY	
DO NOT VERIFY INFORMATION BY SCALING DRAWING	DIMENSIONS ARE IN INCHES MACHINE SURFACES BREAK SHARP EDGES .005/.020	NATIONAL COMPACT STELLARATOR EXPERIMENT	
	TOLERANCES NON-CUMULATIVE	FIELD PERIOD ASSEMBLY FLOOR MOUNTED ROLLER TRACKS W/ VV BASE SUPPORT	
NEXT ASSEMBLY	DECIMAL-INCH FRACTIONS .X +/- .000 0°-120° +/- .010 .XX +/- .030 12°-120° +/- .100 .XXX +/- .005 72°-120° +/- .120 ANGULAR +/- .0°-15° OVER 120° +/- .120	DSN: L. MORRIS 7-2-08	DRAWING NO:
		CHK: T. BROWN 7-2-08	SE185-303
		ENGR: T. BROWN 7-2-08	SHEET 3 OF 3
		SUPV: J. SIEGEL 7-2-08	REV 3.2

NCSX-SE185-303