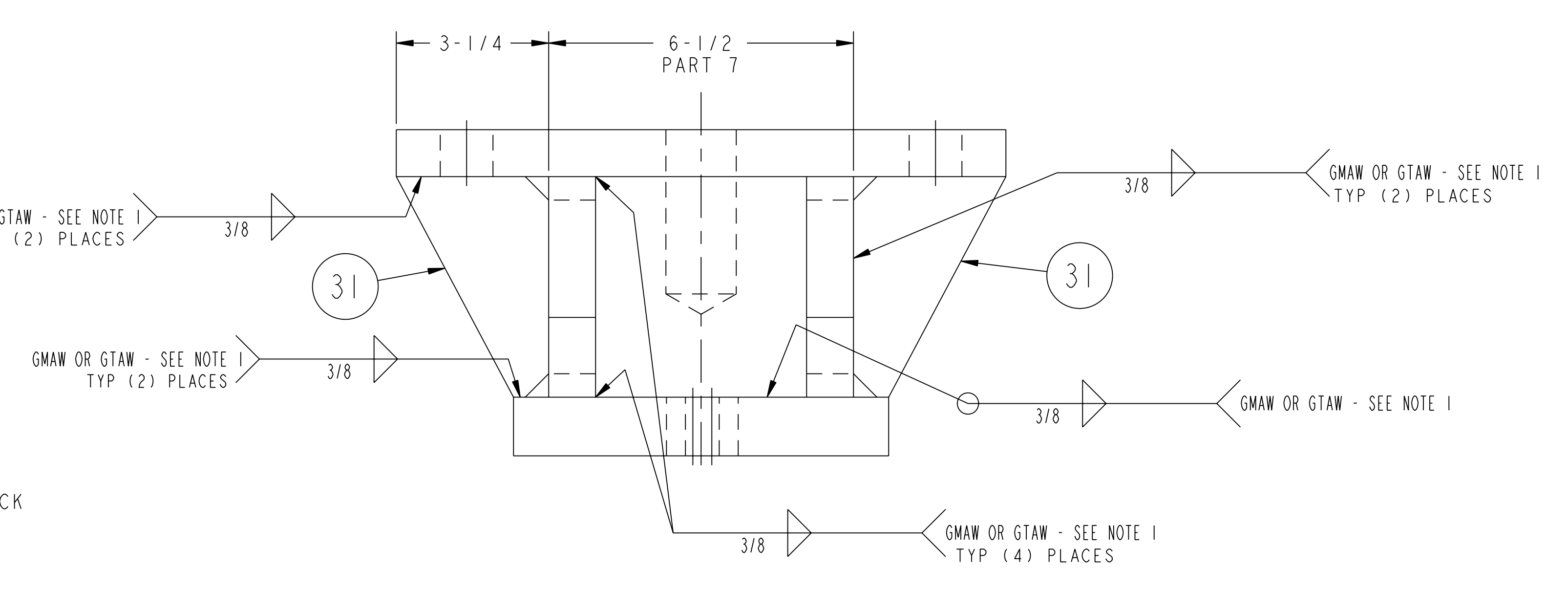
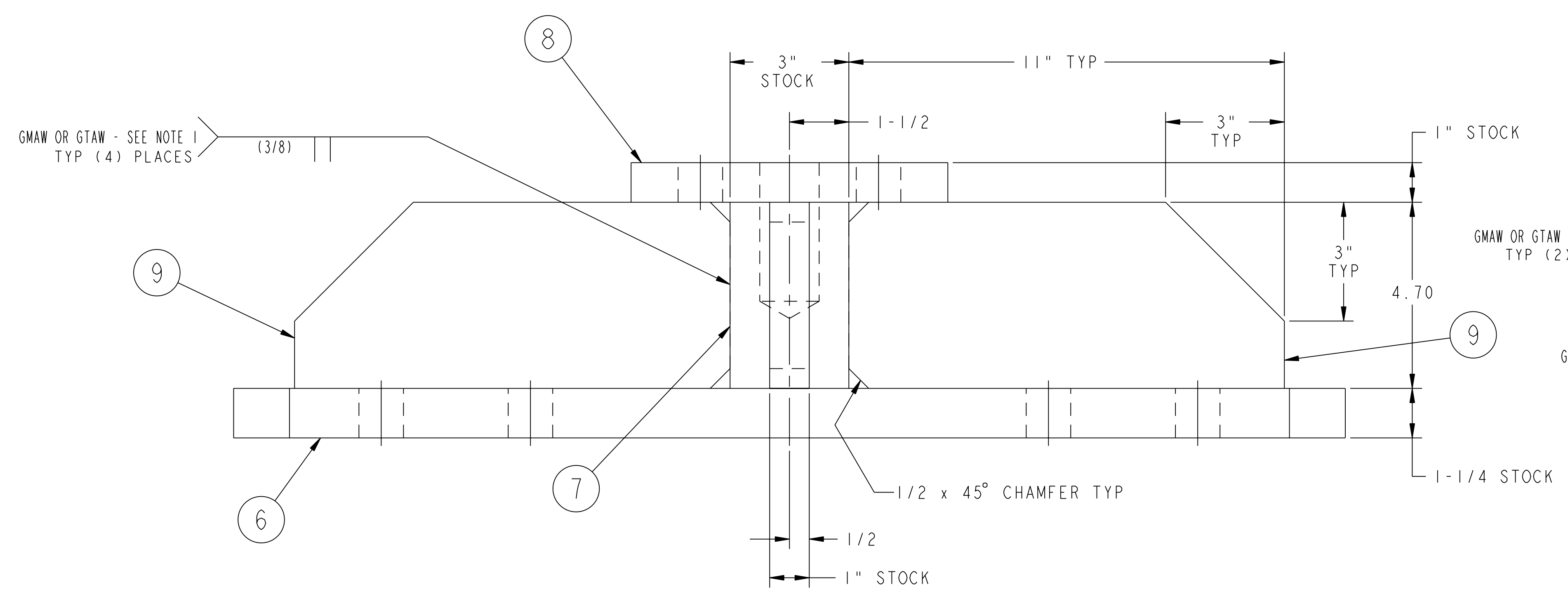
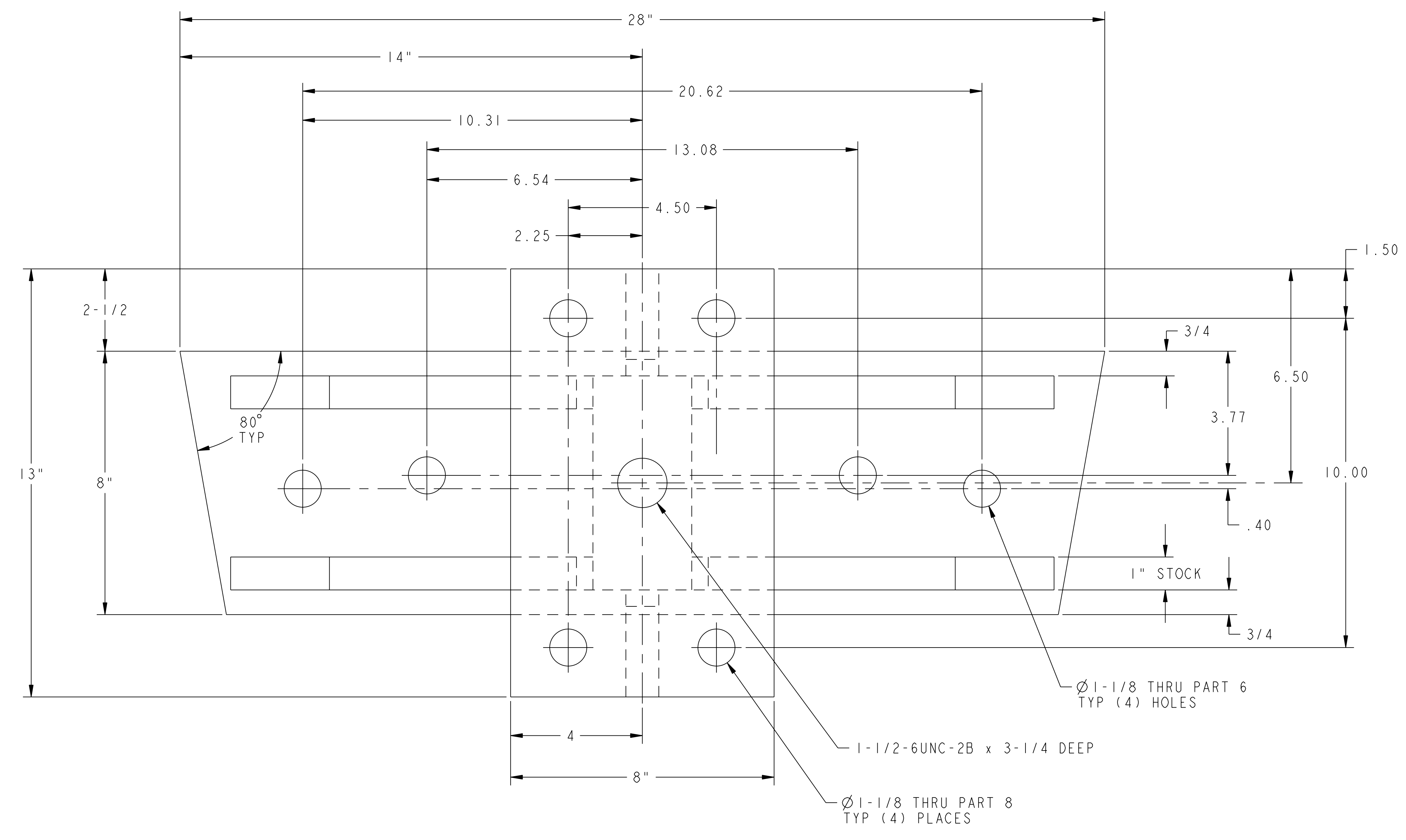




NO.	REVISION	BY	CH	SUP	APPROVED	DATE



02 ASSEMBLY - MOUNTING BRACKET WELDMENT - TYPE "B"

**RELEASED FOR  
FABRICATION / INSTALLATION**  
 PPL Drafting

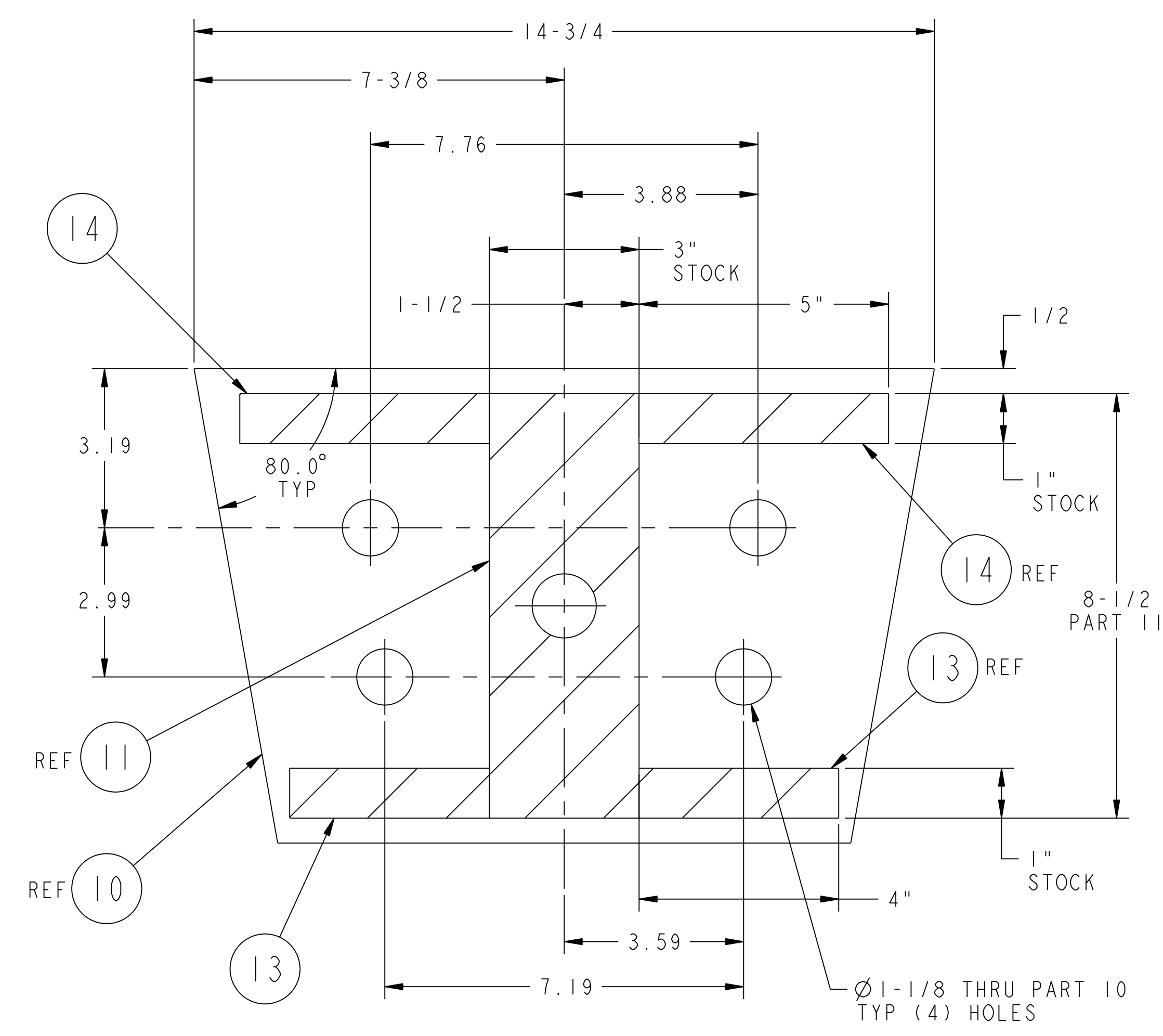
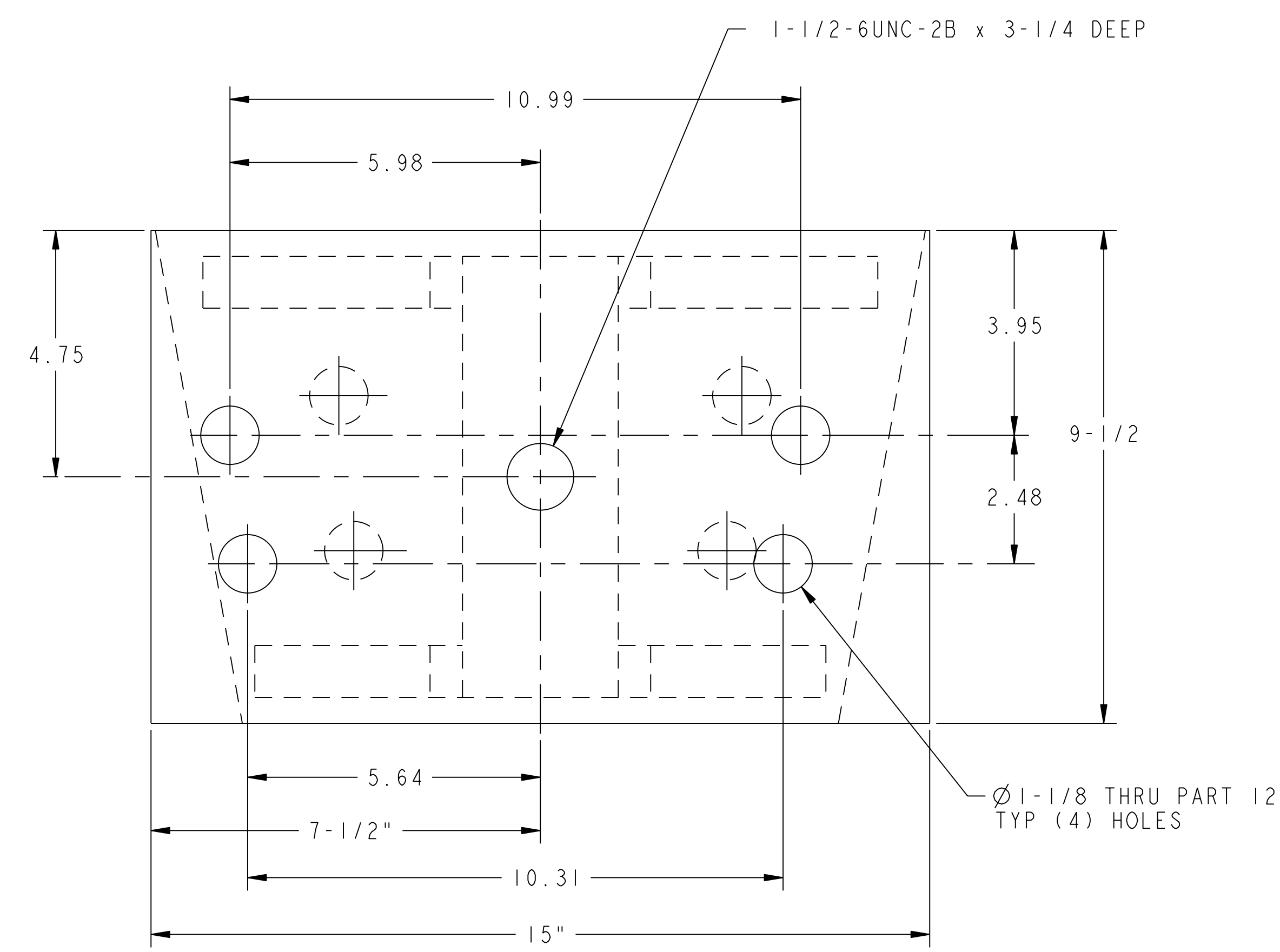
FOR NOTES AND BILL OF MATERIAL SEE SHEET 1

**RELEASE LEVEL: Fabrication**  
**DWG VERSION NO: 22**

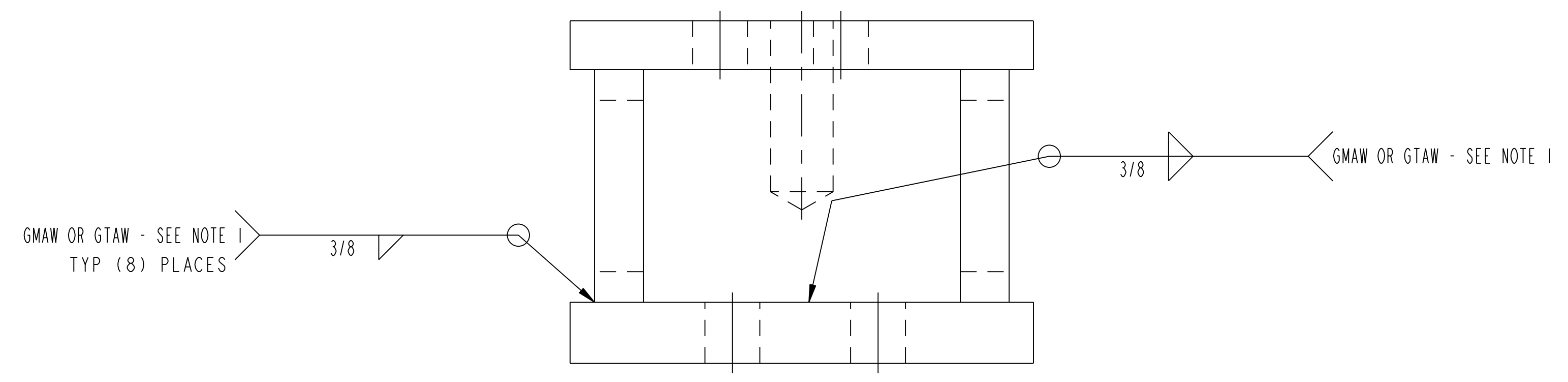
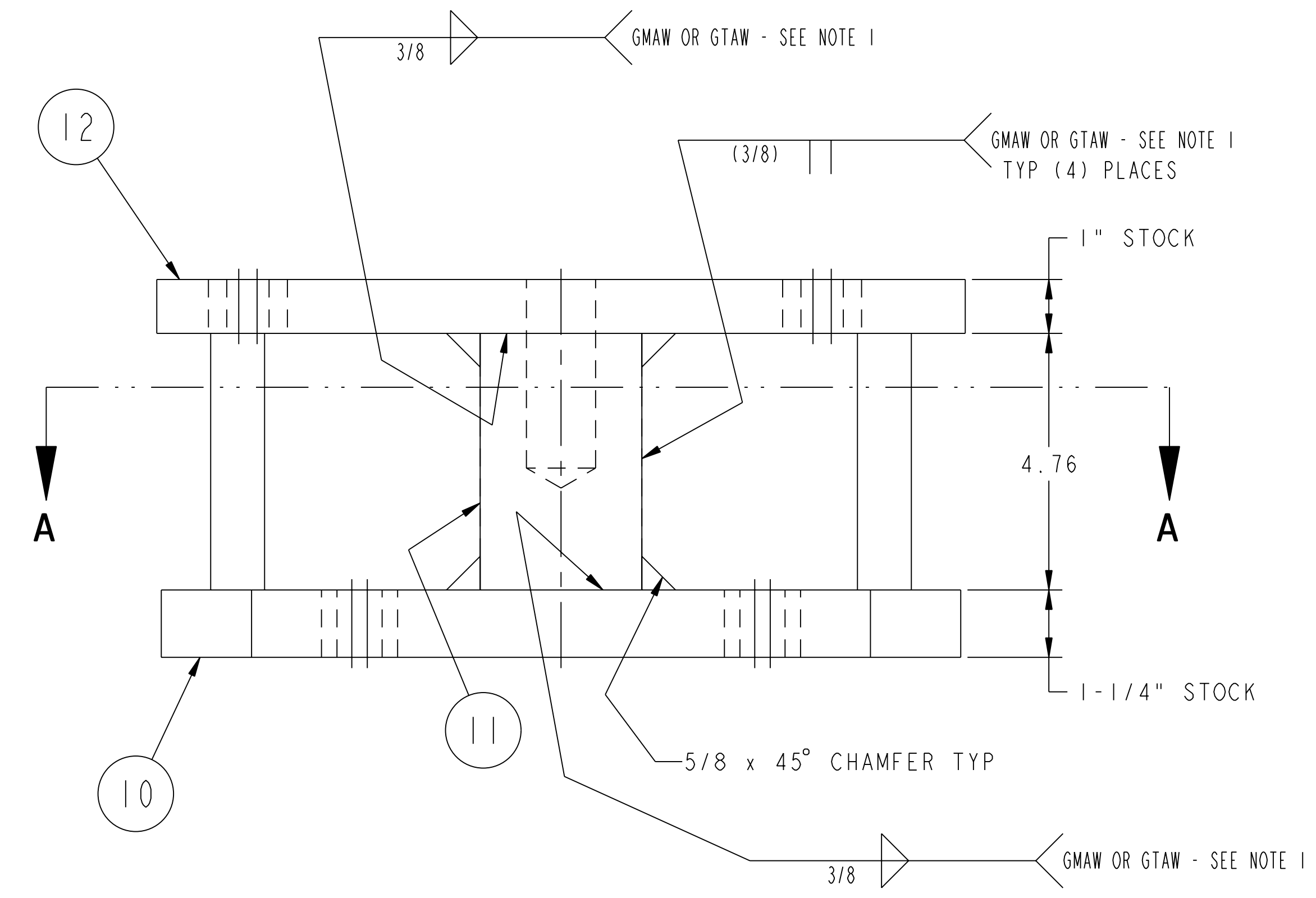
WEIGHT	222.8 lbs
MODEL NAME	SE185-315-01
WELDING ENGINEER	

COMPUTER GENERATED DRAWING MANUAL CHANGES NOT PERMITTED Pro E	CENTRAL FILES: UNLESS OTHERWISE SPECIFIED	PRINCETON PLASMA PHYSICS LABORATORY PRINCETON UNIVERSITY <b>NATIONAL COMPACT STELLARATOR EXPERIMENT</b>	
DO NOT VERIFY INFORMATION BY SCALING DRAWING	DIMENSIONS ARE IN INCHES MACHINE SURFACES BREAK SHARP EDGES .005/.020	FIELD PERIOD ASSEMBLY FIELD PERIOD ASSEMBLY FIXTURE MCWF HALF PERIOD LIFTING FIXTURE MOUNTING BRACKET WELDMENTS	
NEXT ASSEMBLY	TOLERANCES NON-CUMULATIVE DECIMAL-INCH FRACTIONS .XX ±.000 0°-12° ±.010 .XXX ±.005 12°-120° ±.010 ANGULAR ±.0°-15° OVER 120° ±.1°	DSN: L. MORRIS	11-26-07 DRAWING NO:
		CHK: M. COLE	11-26-07
		ENGR: T. BROWN	11-26-07
		SUPV: J. SIEGEL	11-26-07
			SHEET 2 OF 6
			REV D, I

NO.	REVISION	BY	CH	SUP	APPROVED	DATE



SECTION A-A



03 ASSEMBLY - MOUNTING BRACKET WELDMENT - TYPE "C"

RELEASED FOR FABRICATION / INSTALLATION  
PPPL Drafting

FOR NOTES AND BILL OF MATERIAL SEE SHEET 1

RELEASE LEVEL: Fabrication  
DWG VERSION NO: 20

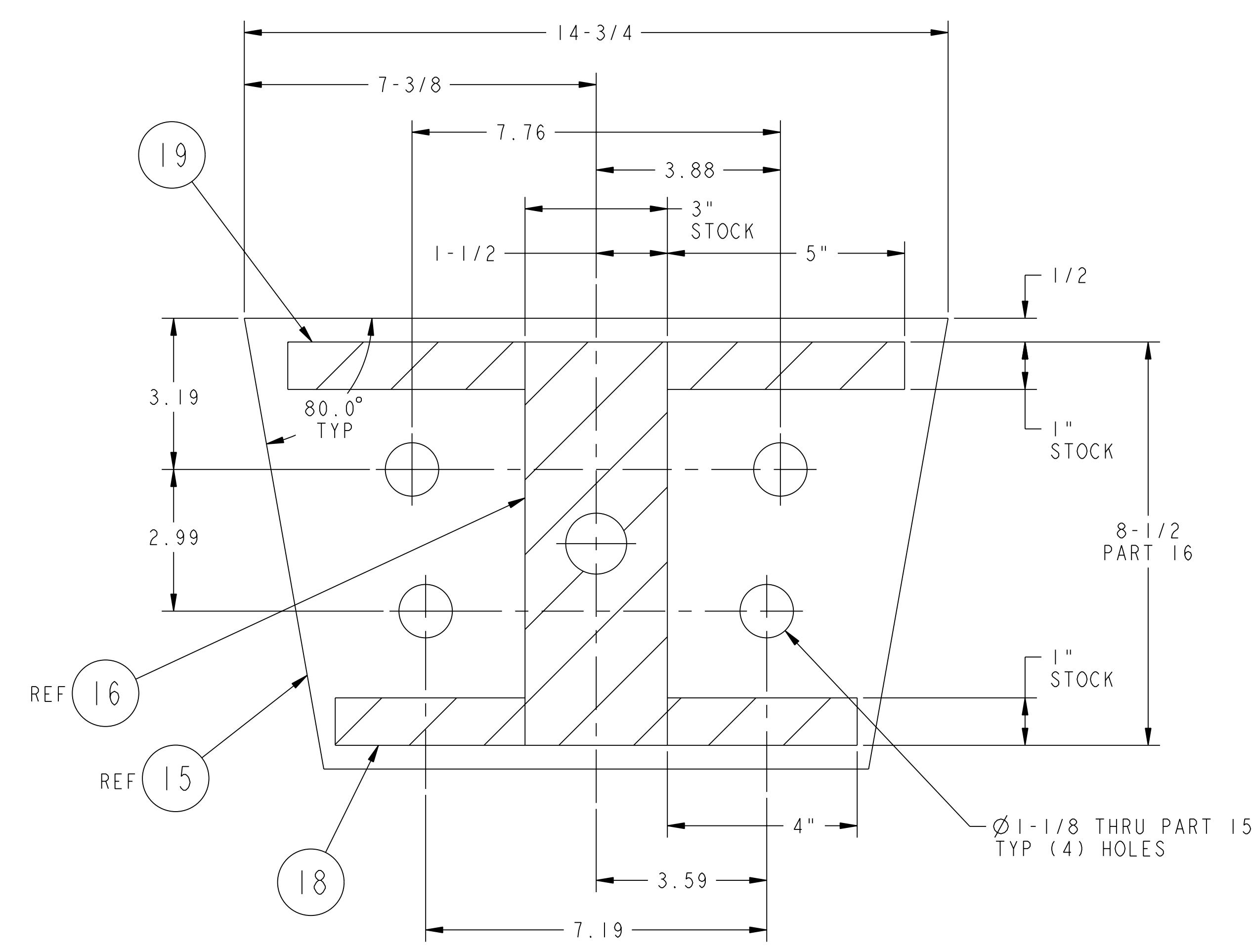
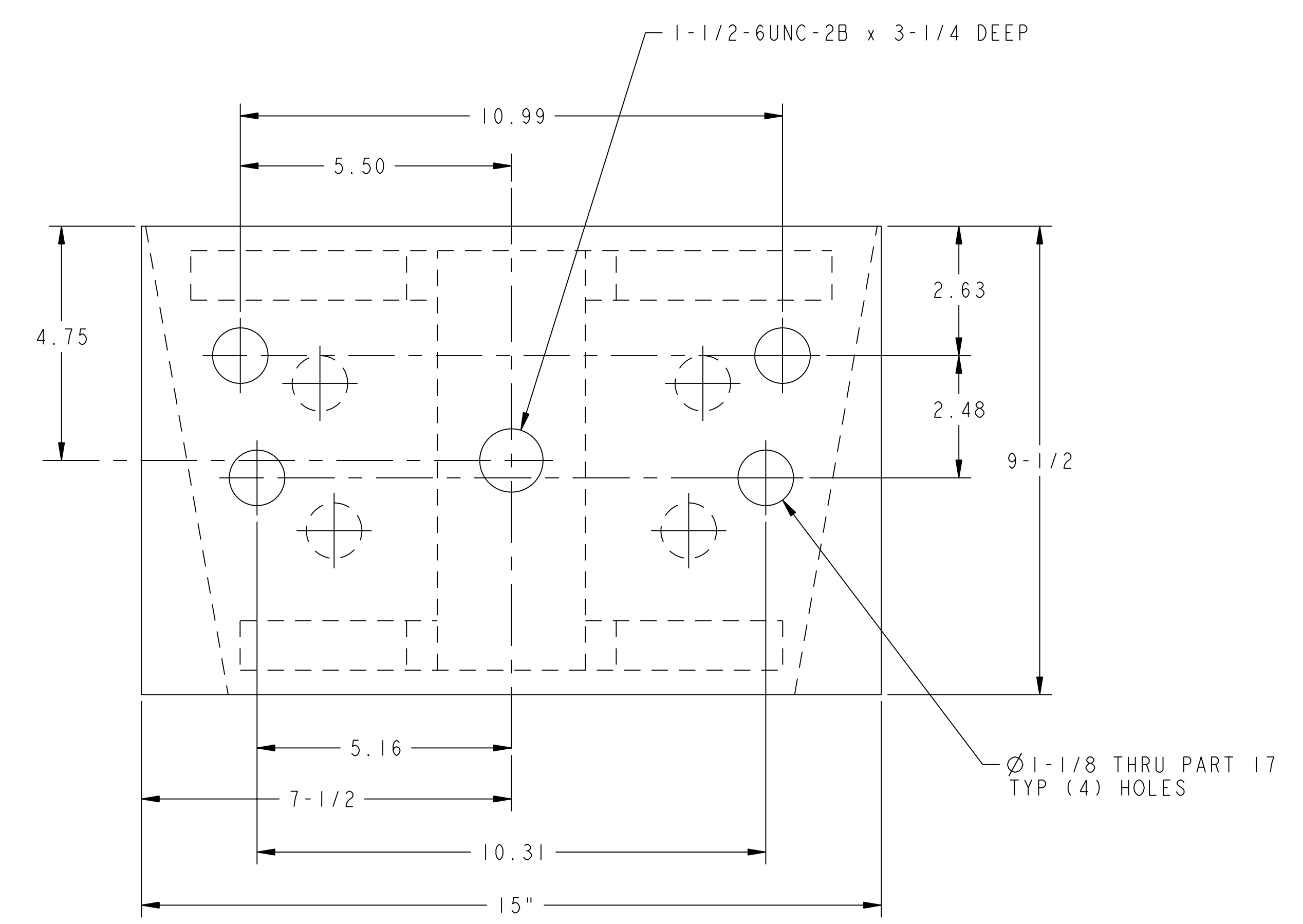
WEIGHT	189.4 lbs
MODEL NAME	SE185-315-02
WELDING ENGINEER	

COMPUTER GENERATED DRAWING MANUAL CHANGES NOT PERMITTED Pro E	CENTRAL FILES: UNLESS OTHERWISE SPECIFIED	PRINCETON PLASMA PHYSICS LABORATORY NATIONAL COMPACT STELLARATOR EXPERIMENT	
DO NOT VERIFY INFORMATION BY SCALING DRAWING	DIMENSIONS ARE IN INCHES MACHINE SURFACES BREAK SHARP EDGES .005/.020	FIELD PERIOD ASSEMBLY FIELD PERIOD ASSEMBLY FIXTURE MCWF HALF PERIOD LIFTING FIXTURE MOUNTING BRACKET WELDMENTS	
NEXT ASSEMBLY	TOLERANCES NON-CUMULATIVE DECIMAL-INCH FRACTIONS .XX ±.010 0°-120° ±.125 .XXX ±.005 120°-120° ±.125 ANGULAR ±.0°-15° OVER 120° ±.125	DSN: L. MORRIS	11-26-07 DRAWING NO:
		CHK: M. COLE	11-26-07
		ENGR: T. BROWN	11-26-07
		SUPV: J. SIEGEL	11-26-07
			11-26-07

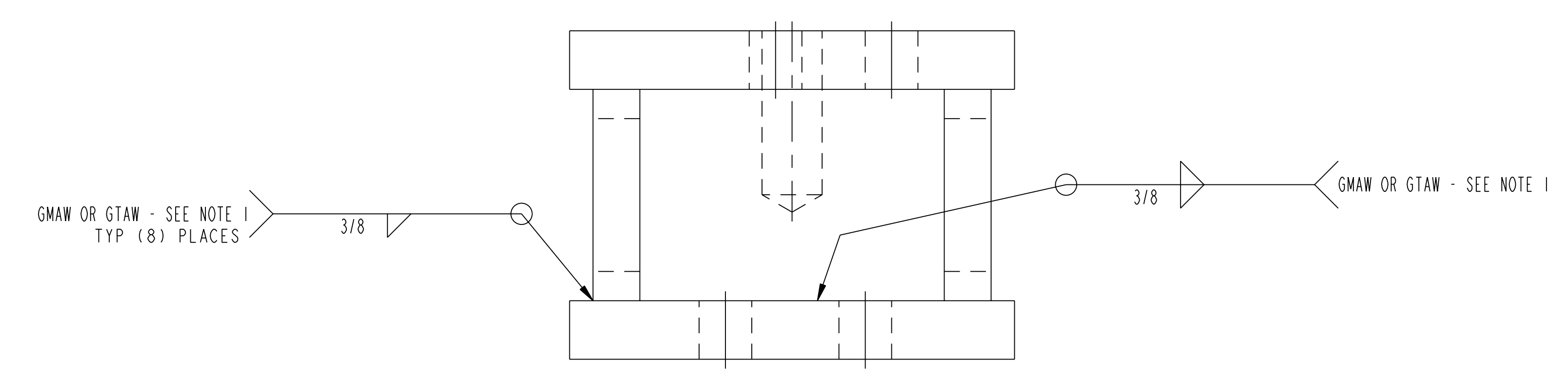
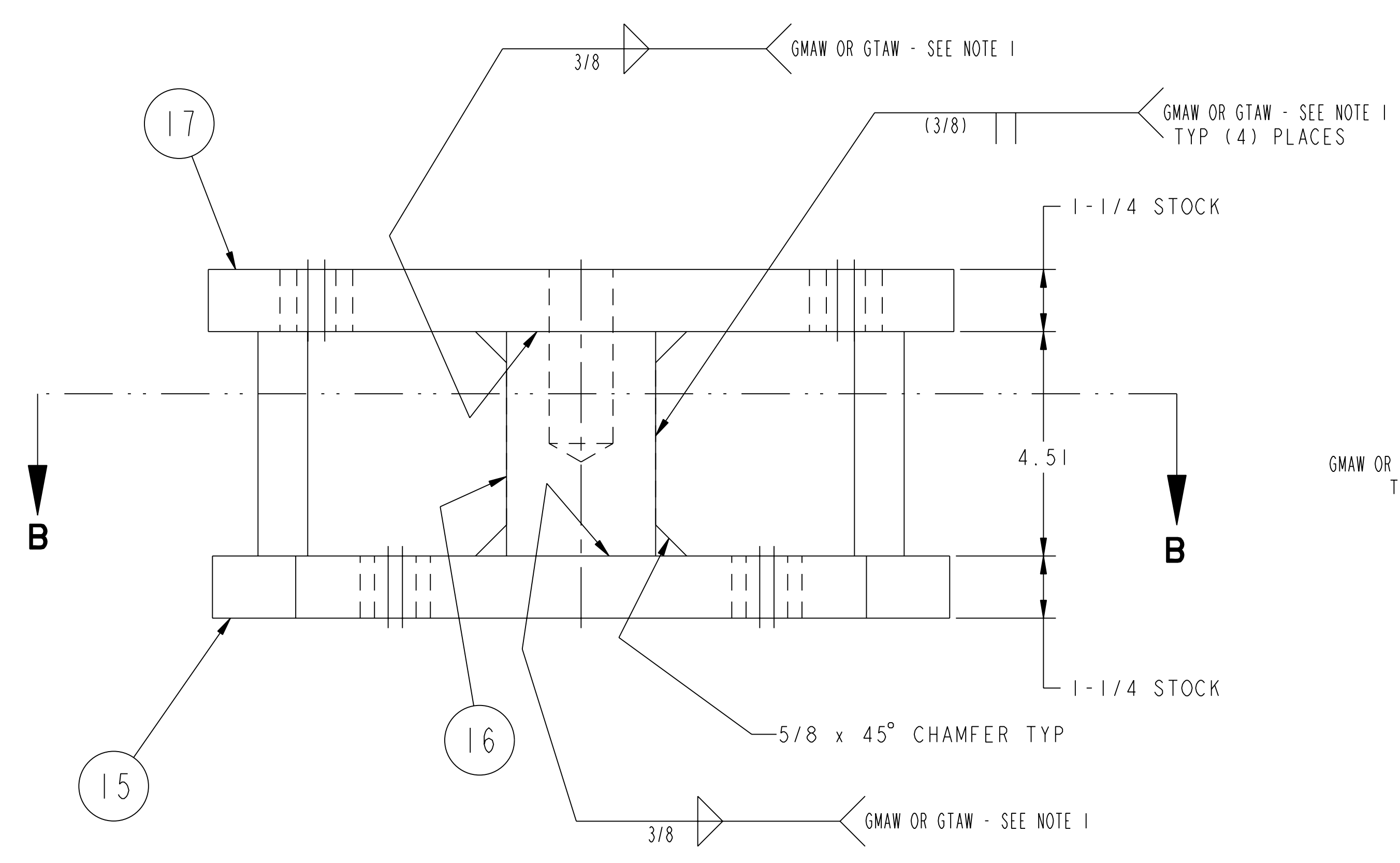
SHEET 3 OF 6  
REV D, 10

NCSX-SE185-315

NO.	REVISION	BY	CH	SUP	APPROVED	DATE



SECTION B-B



04 ASSEMBLY - MOUNTING BRACKET WELDMENT - TYPE "D"

**RELEASED FOR FABRICATION / INSTALLATION**  
 PPPL Drafting

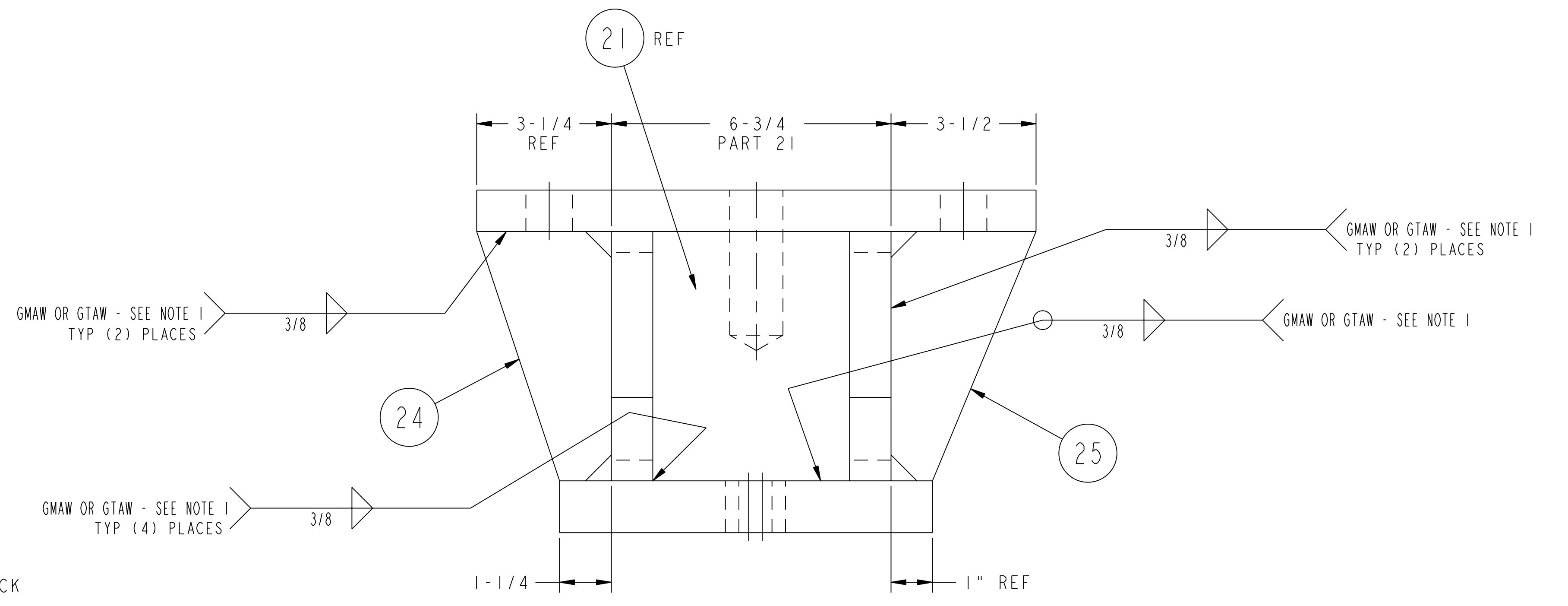
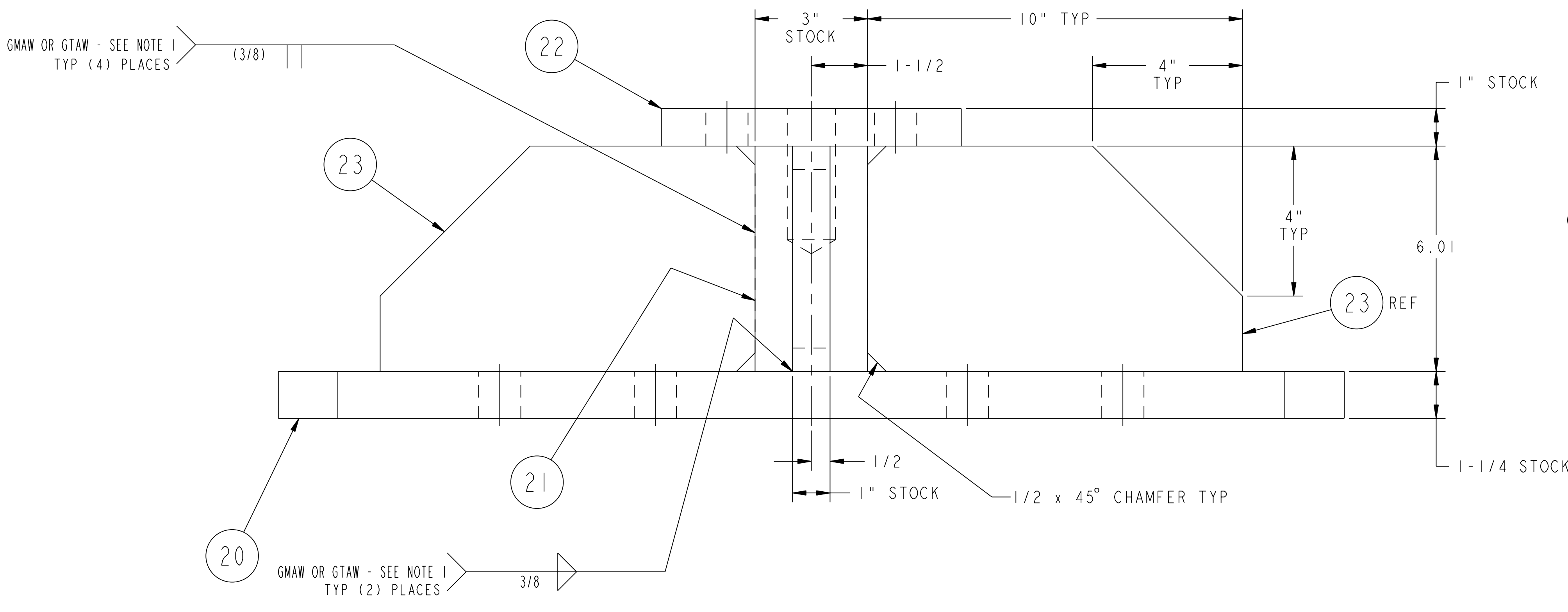
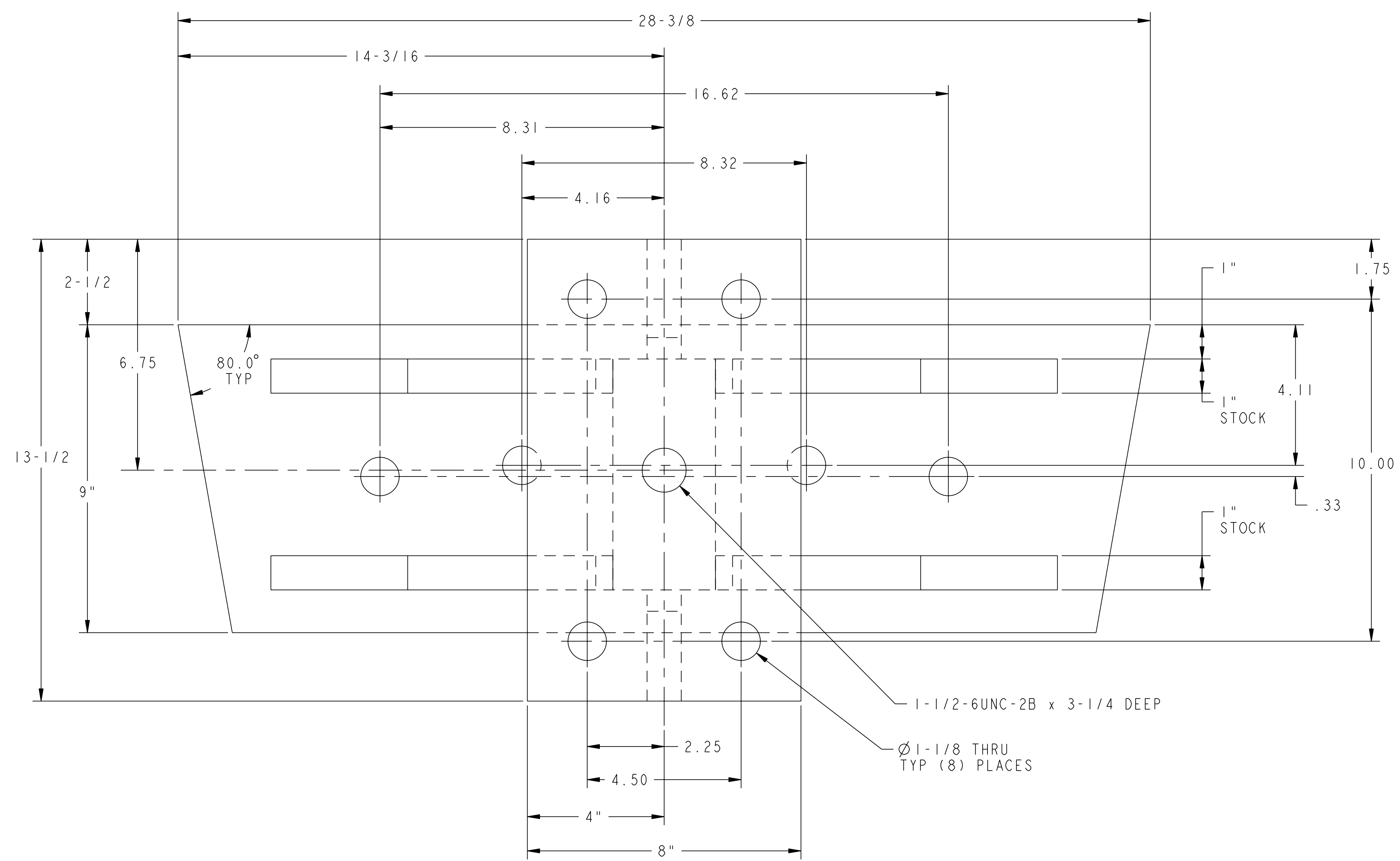
FOR NOTES AND BILL OF MATERIAL SEE SHEET 1

RELEASE LEVEL: Fabrication  
 DWG VERSION NO: 1

WEIGHT	149.2 lbs
MODEL NAME	SE185-315-04
WELDING ENGINEER	

COMPUTER GENERATED DRAWING MANUAL CHANGES NOT PERMITTED Pro E	CENTRAL FILES: UNLESS OTHERWISE SPECIFIED	PRINCETON PLASMA PHYSICS LABORATORY PRINCETON UNIVERSITY <b>NATIONAL COMPACT STELLARATOR EXPERIMENT</b>	
DO NOT VERIFY INFORMATION BY SCALING DRAWING	DIMENSIONS ARE IN INCHES MACHINE SURFACES BREAK SHARP EDGES .005/.020	FIELD PERIOD ASSEMBLY FIELD PERIOD ASSEMBLY FIXTURE MCWF HALF PERIOD LIFTING FIXTURE MOUNTING BRACKET WELDMENTS	
NEXT ASSEMBLY	TOLERANCES NON-CUMULATIVE DECIMAL-INCH FRACTIONS .XX ±.000 0°-12° ±.010 .XXX ±.005 12°-120° ±.010 ANGULAR ±.0°-15° OVER 120° ±.125	DSN: L. MORRIS	11-26-07 DRAWING NO:
		CHK: M. COLE	11-26-07
		ENGR: T. BROWN	11-26-07
		SUPV: J. SIEGEL	11-26-07
			SHEET 4 OF 6
			REV D, 10

NO.	REVISION	BY	CH	SUP	APPROVED	DATE



05 ASSEMBLY - MOUNTING BRACKET WELDMENT - TYPE "E"

**RELEASED FOR  
FABRICATION / INSTALLATION**  
 PPPL Drafting

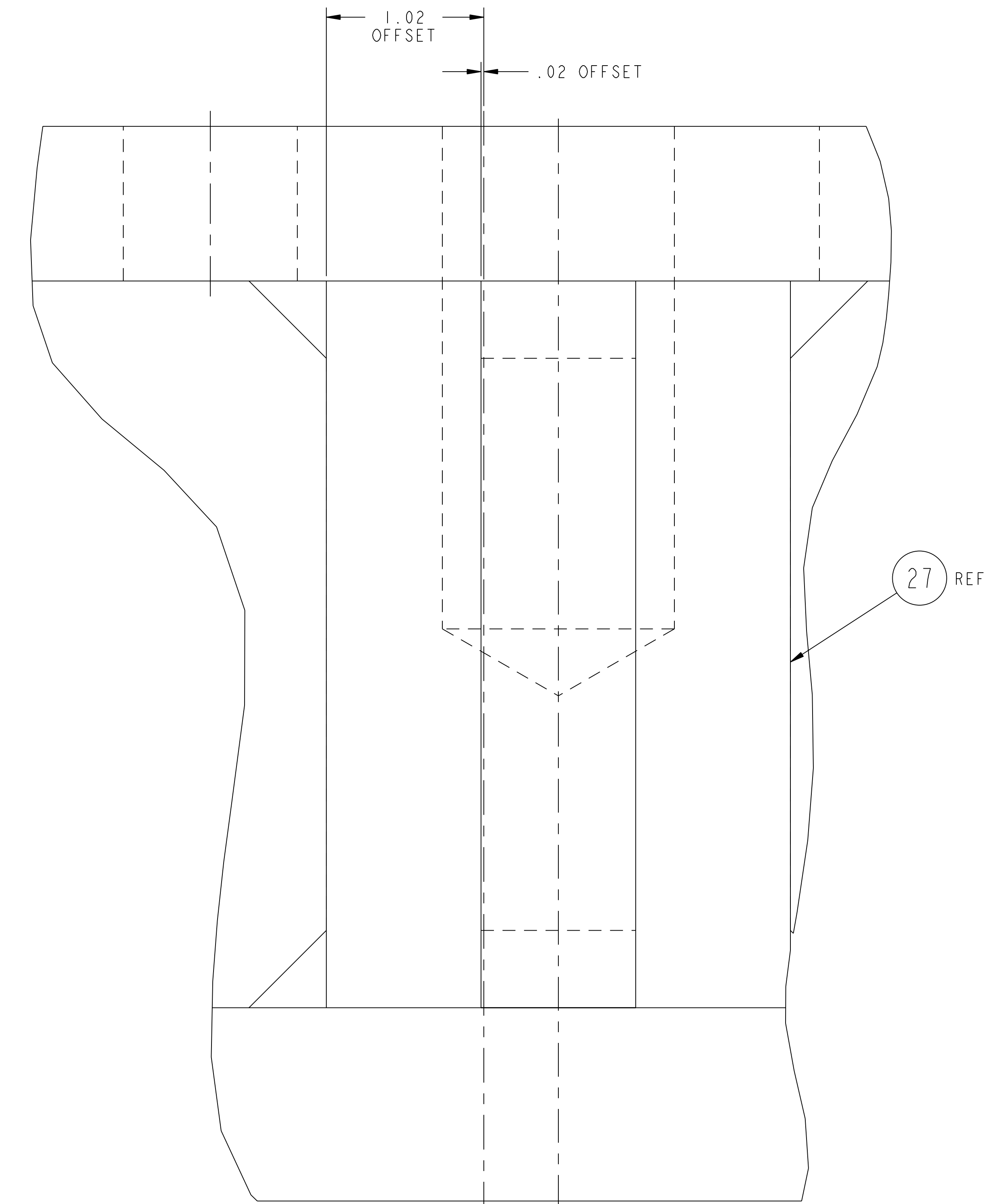
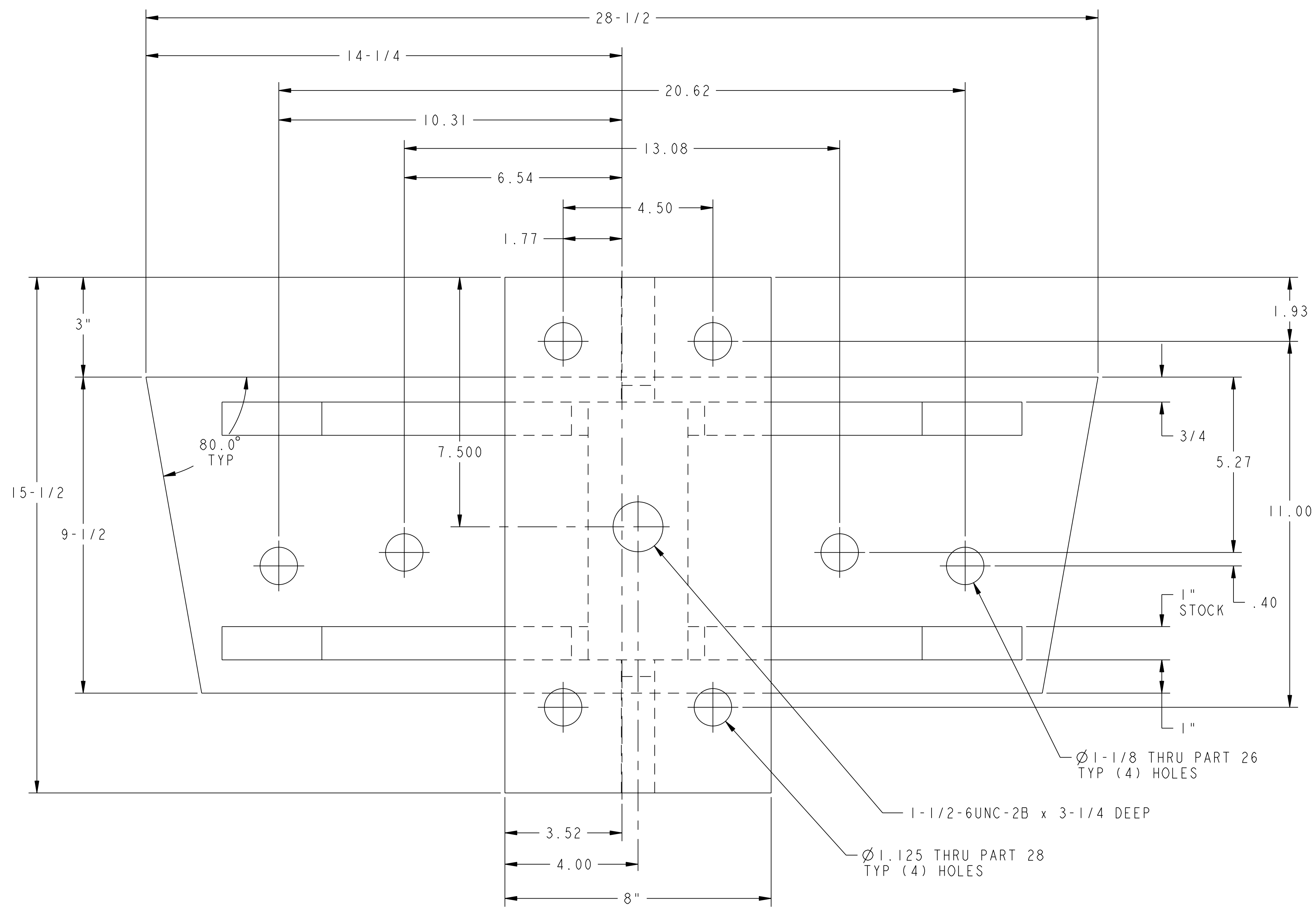
FOR NOTES AND BILL OF MATERIAL SEE SHEET 1

**RELEASE LEVEL: Fabrication**  
**DWG VERSION NO: 3**

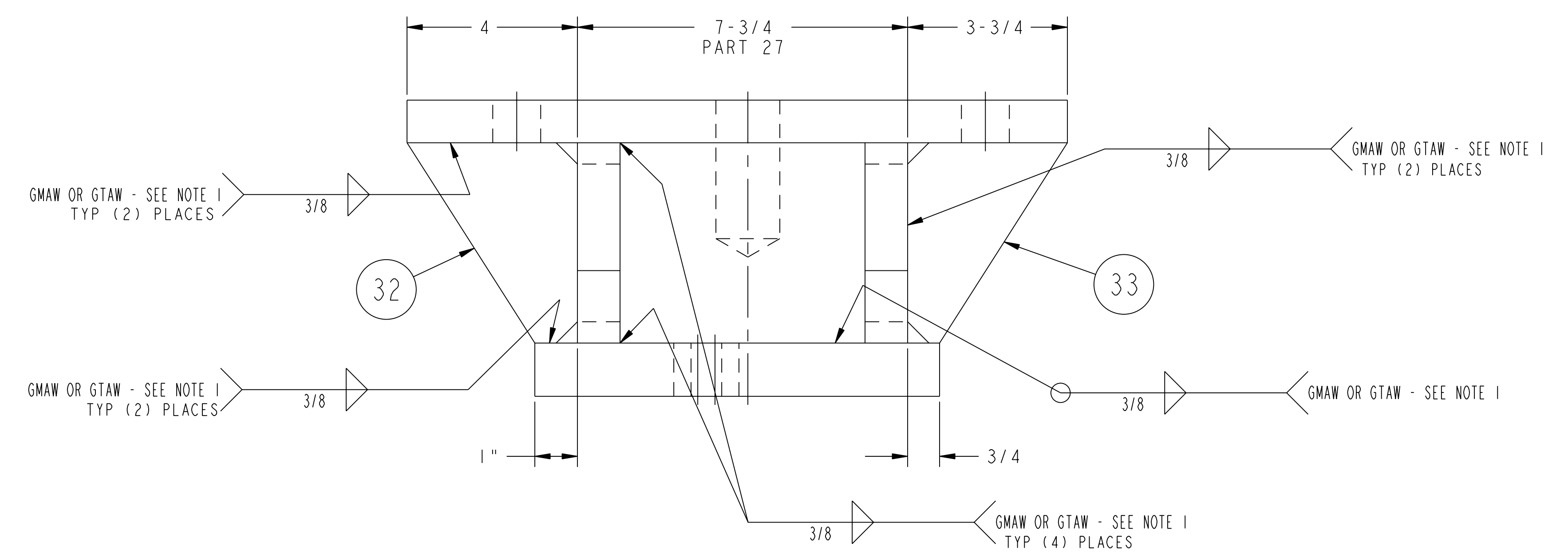
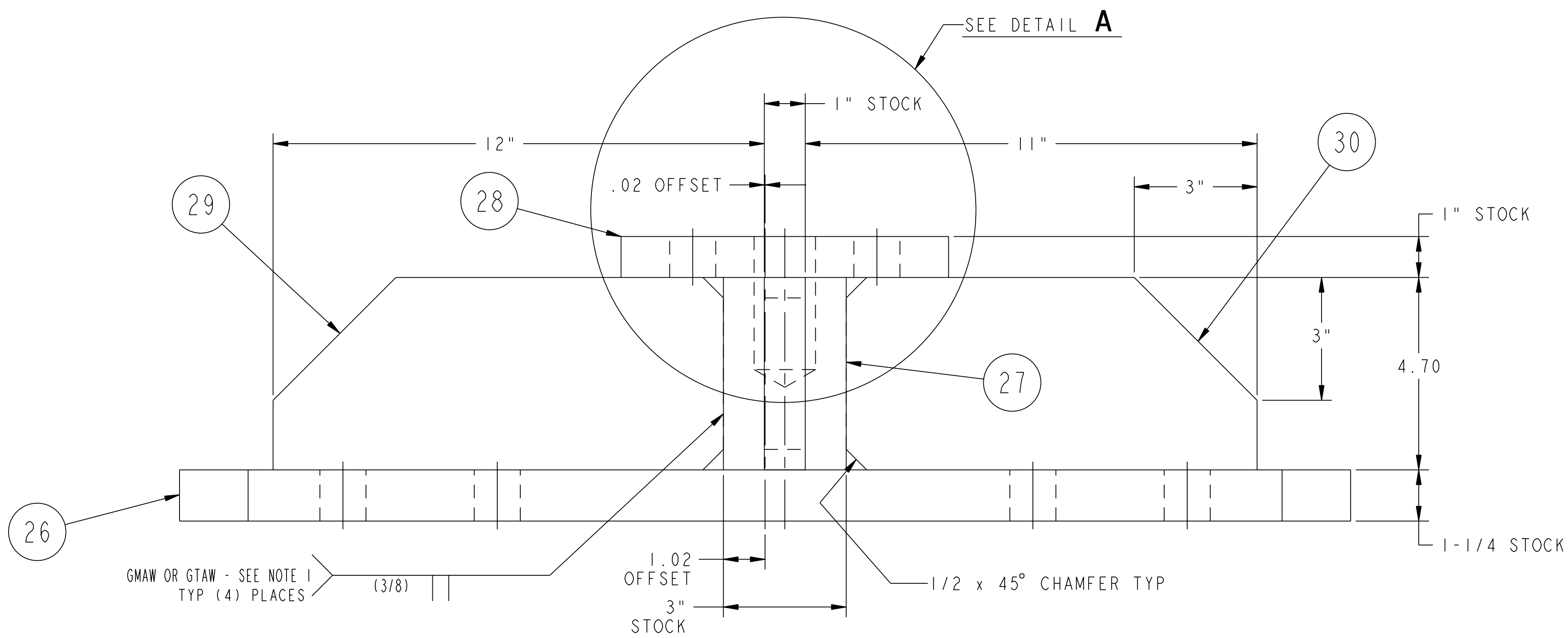
WEIGHT	218.0 lbs
MODEL NAME	SE185-315-05
WELDING ENGINEER	

COMPUTER GENERATED DRAWING MANUAL CHANGES NOT PERMITTED Pro E	CENTRAL FILES: UNLESS OTHERWISE SPECIFIED	PRINCETON PLASMA PHYSICS LABORATORY PRINCETON UNIVERSITY <b>NATIONAL COMPACT STELLARATOR EXPERIMENT</b>	
DO NOT VERIFY INFORMATION BY SCALING DRAWING	DIMENSIONS ARE IN INCHES MACHINE SURFACES UNLESS OTHERWISE SPECIFIED	FIELD PERIOD ASSEMBLY FIELD PERIOD ASSEMBLY FIXTURE MCWF HALF PERIOD LIFTING FIXTURE MOUNTING BRACKET WELDMENTS	
DO NOT VERIFY INFORMATION BY SCALING DRAWING	BREAK SHARP EDGES .005/.020	DSN: L. MORRIS	11-26-07 DRAWING NO:
NEXT ASSEMBLY	TOLERANCES NON-CUMULATIVE	CHK: M. COLE	11-26-07
	DECIMAL-INCH FRACTIONS	ENGR: T. BROWN	11-26-07
	.XX +/- .000 0°-120° +/- .010	SUPV: J. SIEGEL	11-26-07
	.XXX +/- .005 120°-120° +/- .010		
	ANGULAR +/- .0°-15° OVER 120° +/- .125		

NO.	REVISION	BY	CH	SUP	APPROVED	DATE



DETAIL A



06 ASSEMBLY - MOUNTING BRACKET WELDMENT - TYPE "F"

**RELEASED FOR FABRICATION / INSTALLATION**  
 PPPL Drafting

FOR NOTES AND BILL OF MATERIAL SEE SHEET 1

**RELEASE LEVEL: Fabrication**  
**DWG VERSION NO: 3**

WEIGHT  
218.0 lbs

MODEL NAME  
SE185-315-05

WELDING ENGINEER

COMPUTER GENERATED DRAWING MANUAL CHANGES NOT PERMITTED Pro E	CENTRAL FILES: UNLESS OTHERWISE SPECIFIED DIMENSIONS ARE IN INCHES MACHINE SURFACES BREAK SHARP EDGES .005/.020	PRINCETON PLASMA PHYSICS LABORATORY PRINCETON UNIVERSITY <b>NATIONAL COMPACT STELLARATOR EXPERIMENT</b>	
DO NOT VERIFY INFORMATION BY SCALING DRAWING	TOLERANCES NON-CUMULATIVE	FIELD PERIOD ASSEMBLY FIELD PERIOD ASSEMBLY FIXTURE MCWF HALF PERIOD LIFTING FIXTURE MOUNTING BRACKET WELDMENTS	
NEXT ASSEMBLY	DECIMAL-INCH FRACTIONS .XX ±.000 .XXX ±.005 ANGULAR ±.0°-15° OVER 120° ±.1°	DSN: L. MORRIS CHK: M. COLE ENGR: T. BROWN SUPV: J. SIEGEL	11-26-07 11-26-07 11-26-07 11-26-07
		DRAWING NO: <b>SE185-315</b>	SHEET 6 OF 6 REV D, 10

NCSX-SE185-315