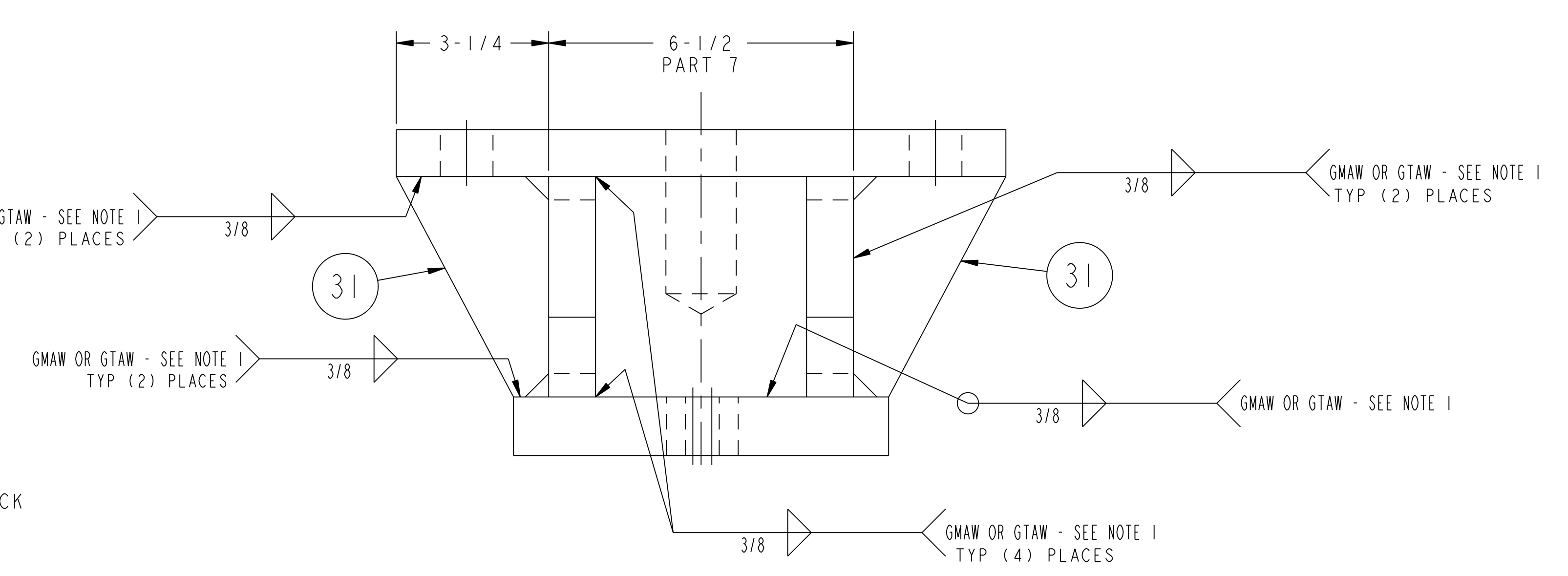
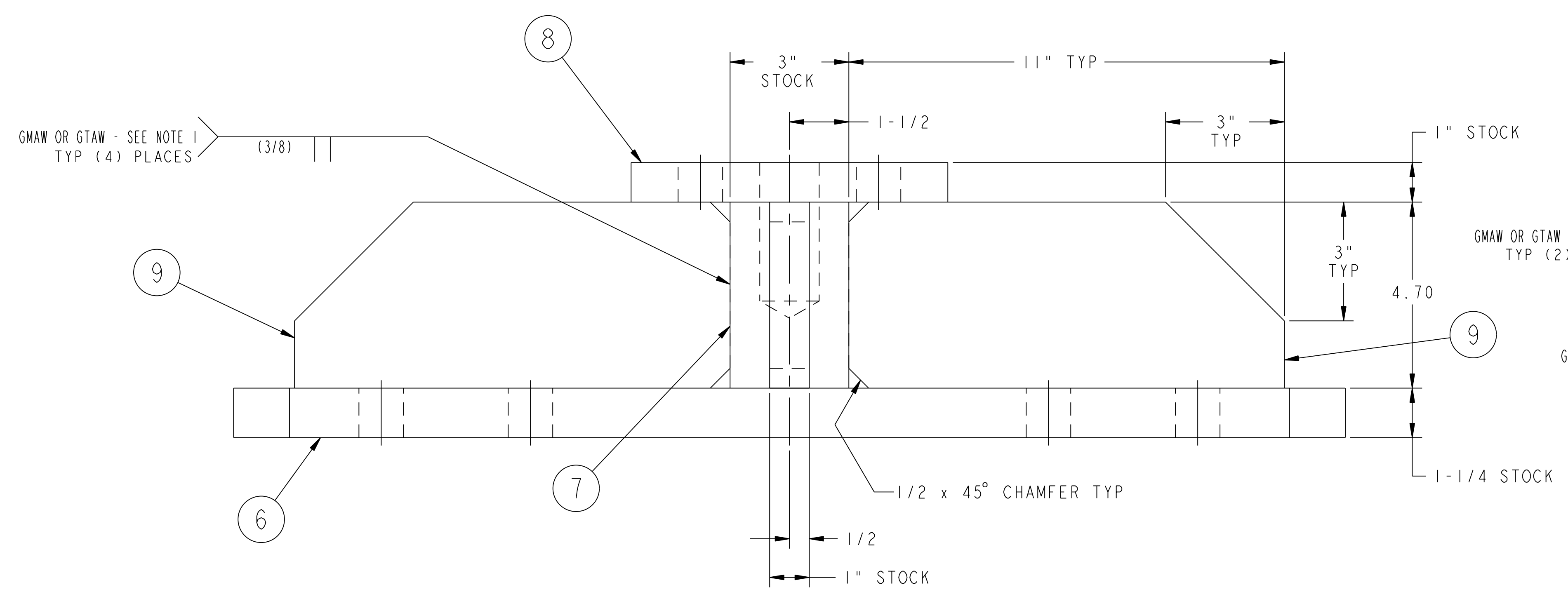
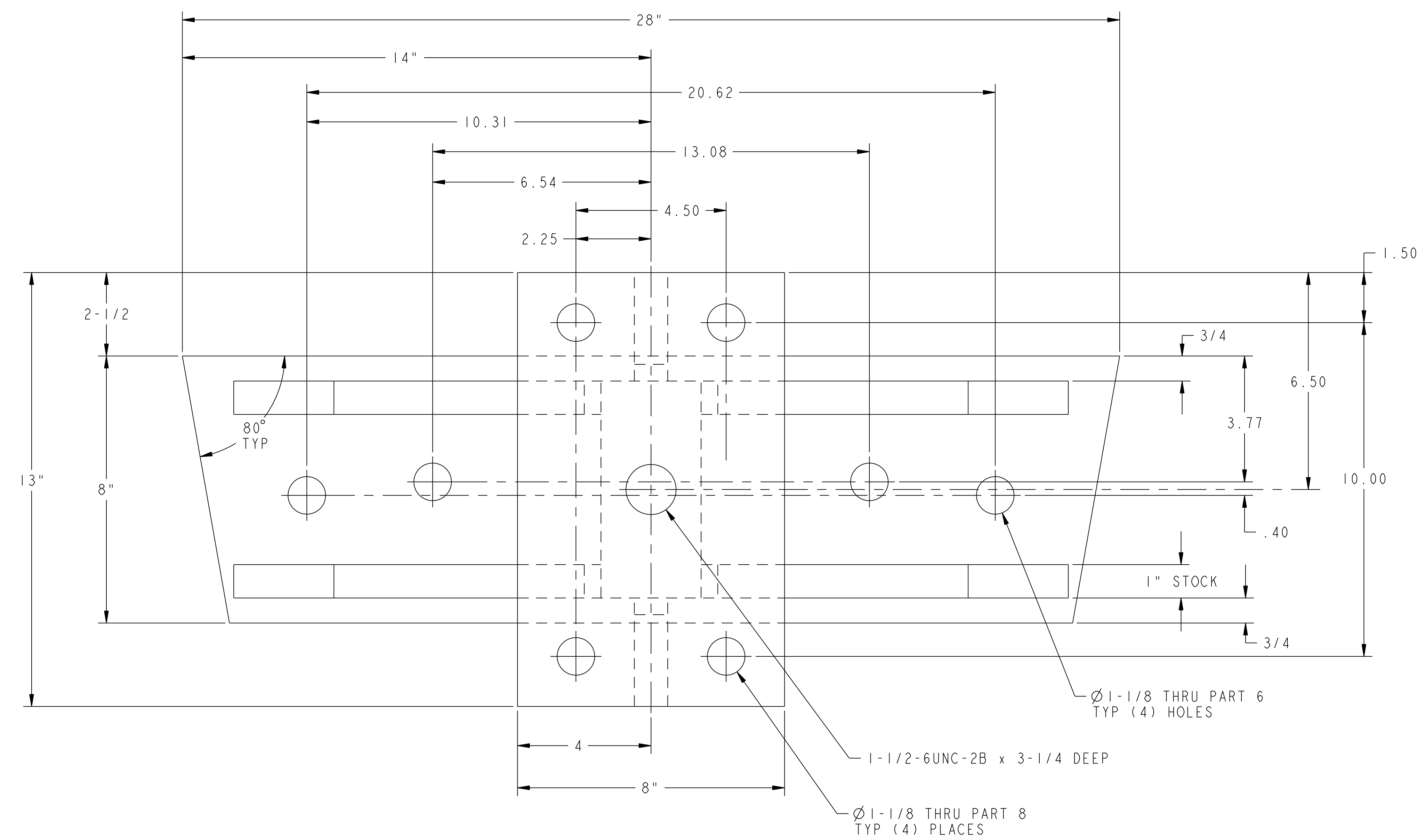


NO.	REVISION	BY	CH	SUP	APPROVED	DATE



02 ASSEMBLY - MOUNTING BRACKET WELDMENT - TYPE "B"

RELEASED FOR FABRICATION / INSTALLATION
PPPL Drafting

FOR NOTES AND BILL OF MATERIAL SEE SHEET 1

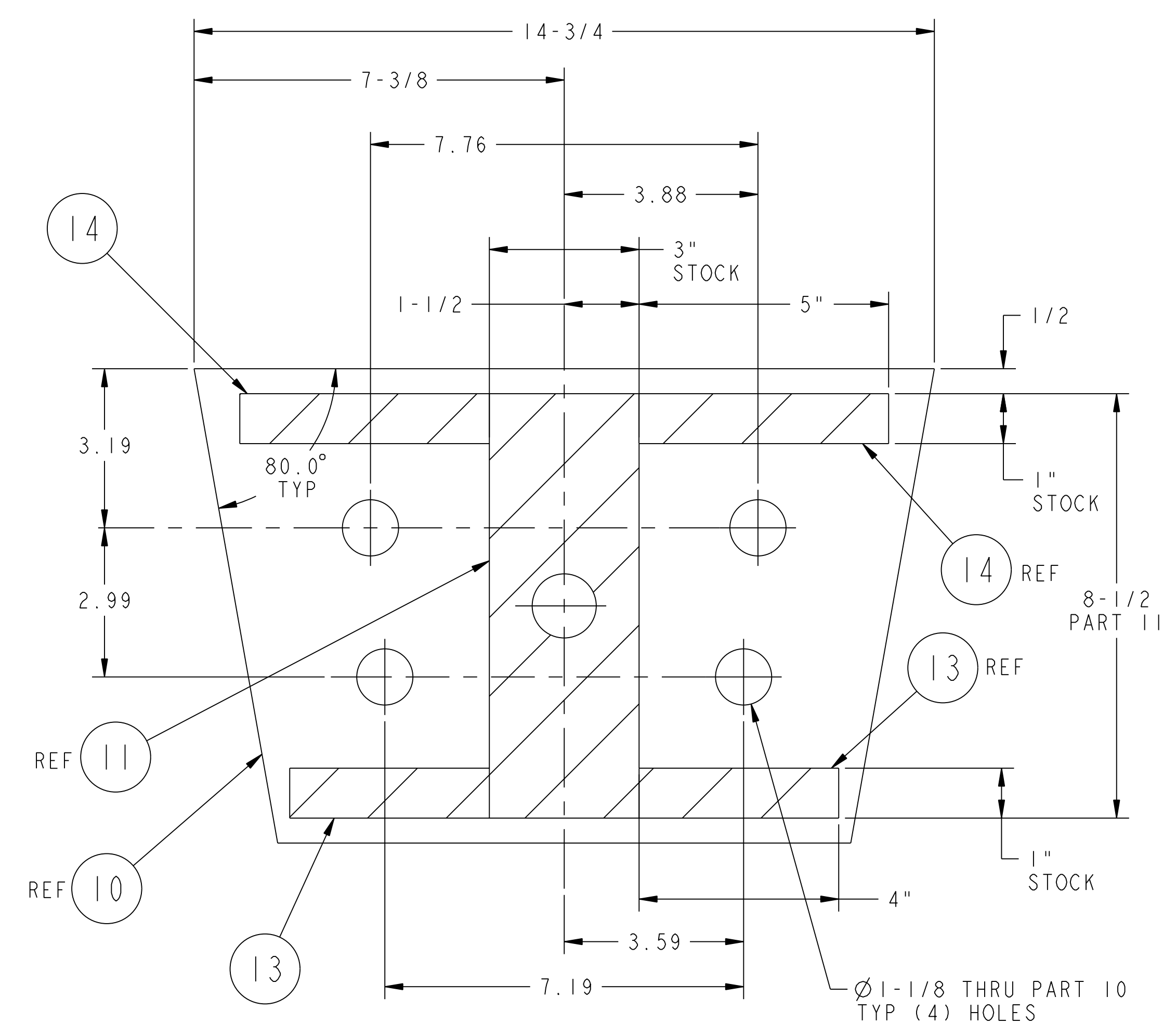
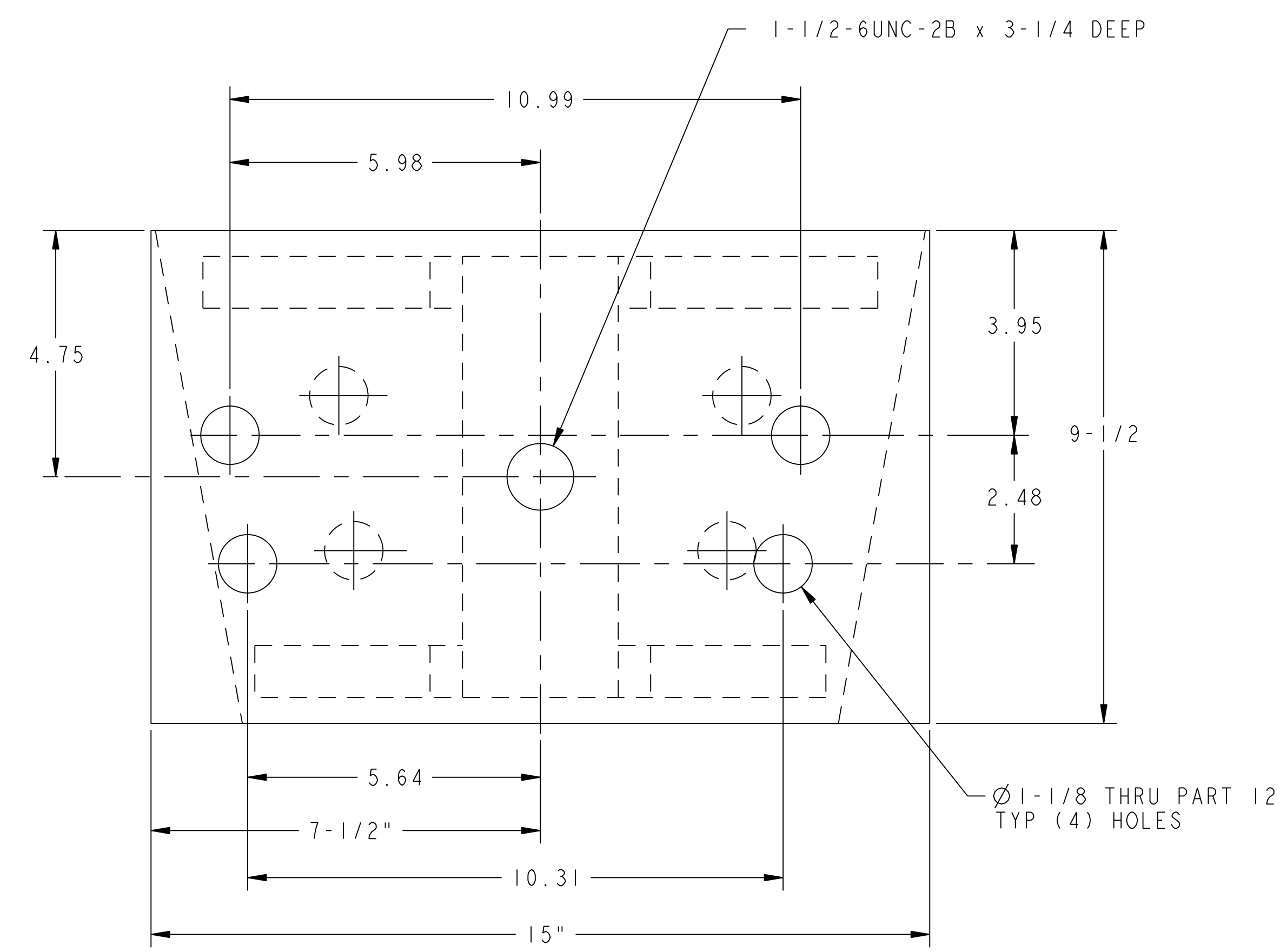
COMPUTER GENERATED DRAWING MANUAL CHANGES NOT PERMITTED Pro E	CENTRAL FILES:	PRINCETON PLASMA PHYSICS LABORATORY PRINCETON UNIVERSITY	
	UNLESS OTHERWISE SPECIFIED	NATIONAL COMPACT STELLARATOR EXPERIMENT	
DO NOT VERIFY INFORMATION BY SCALING DRAWING	DIMENSIONS ARE IN INCHES MACHINE SURFACES BREAK SHARP EDGES .005/.020	FIELD PERIOD ASSEMBLY FIELD PERIOD ASSEMBLY FIXTURE MCWF HALF PERIOD LIFTING FIXTURE MOUNTING BRACKET WELDMENTS	
NEXT ASSEMBLY	TOLERANCES NON-CUMULATIVE	DSN: L. MORRIS	11-26-07 DRAWING NO:
	DECIMAL-INCH FRACTIONS	CHK: M. COLE	11-26-07
	.XX +/- .000 0°-120° +/- .010	ENGR: T. BROWN	11-26-07
	.XXX +/- .005 72°-120° +/- .010	SUPV: J. SIEGEL	11-26-07
	ANGULAR +/- .0°-15° OVER 120° +/- .122		

RELEASE LEVEL: Fabrication
DWG VERSION NO: 0

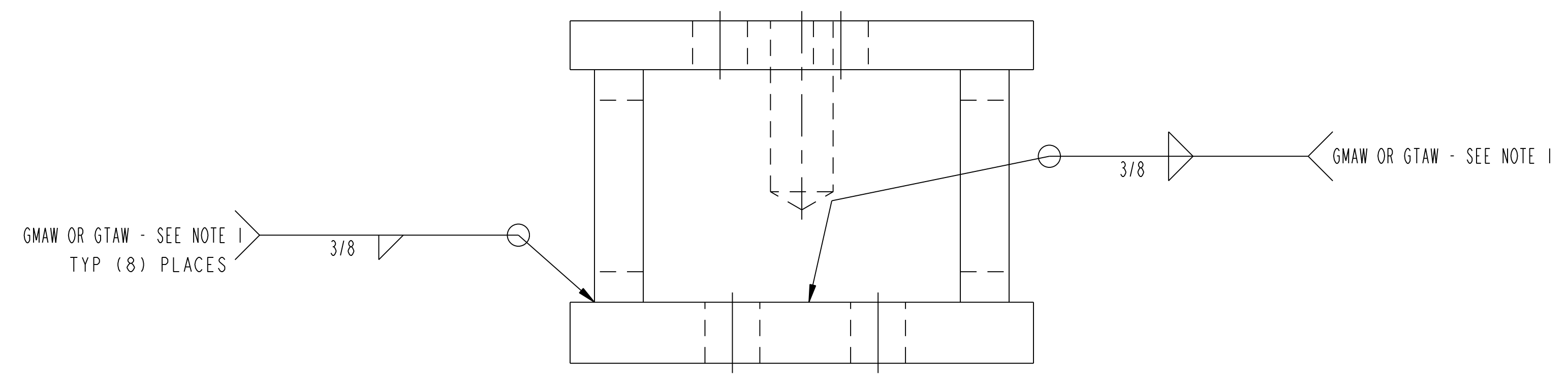
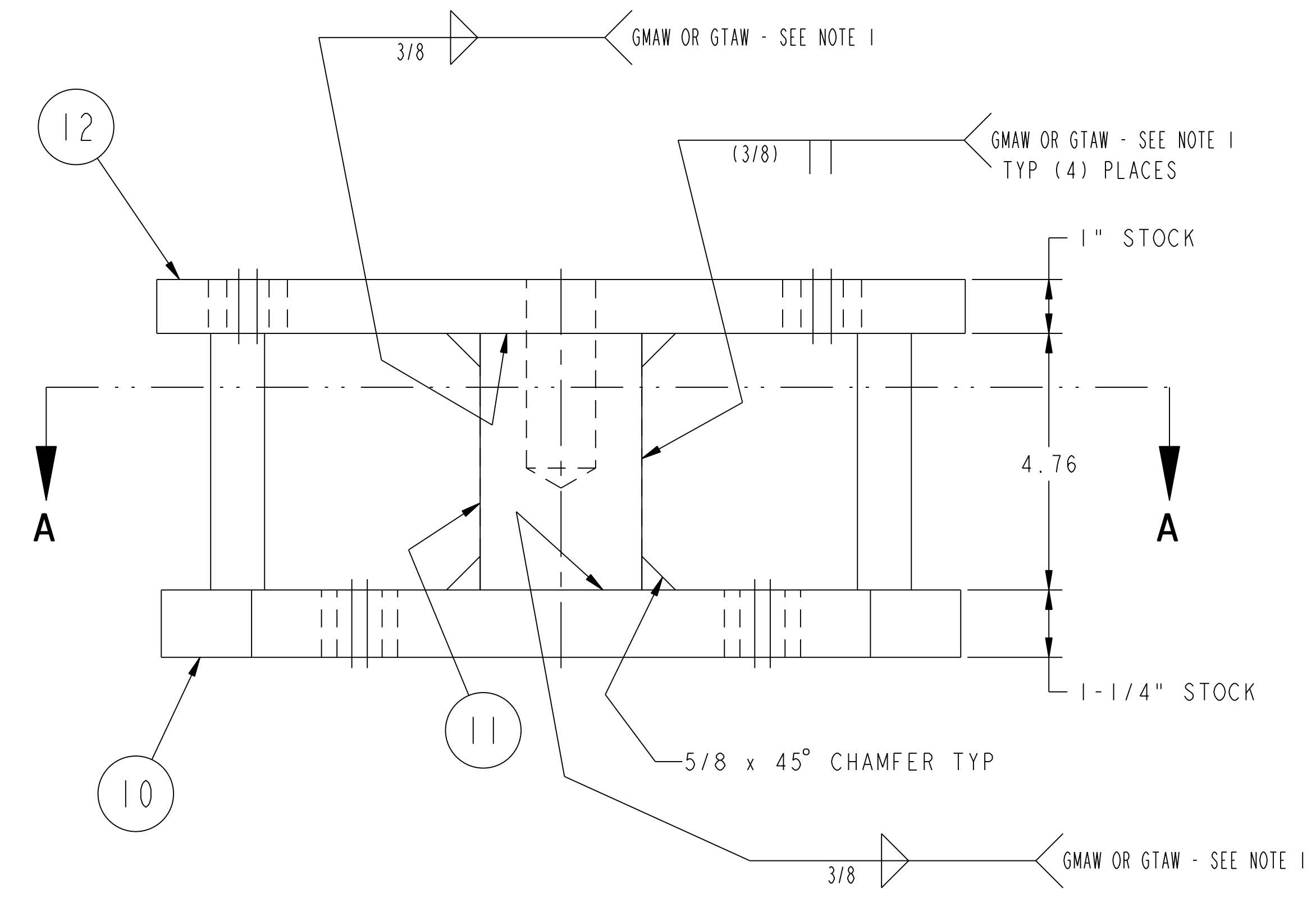
WEIGHT
222.8 lbs
MODEL NAME
SE185-315-01
WELDING ENGINEER

SE185-315
SHEET 2 OF 6
REV 1.0

NO.	REVISION	BY	CH	SUP	APPROVED	DATE



SECTION A-A



03 ASSEMBLY - MOUNTING BRACKET WELDMENT - TYPE "C"

RELEASED FOR FABRICATION / INSTALLATION
PPPL Drafting

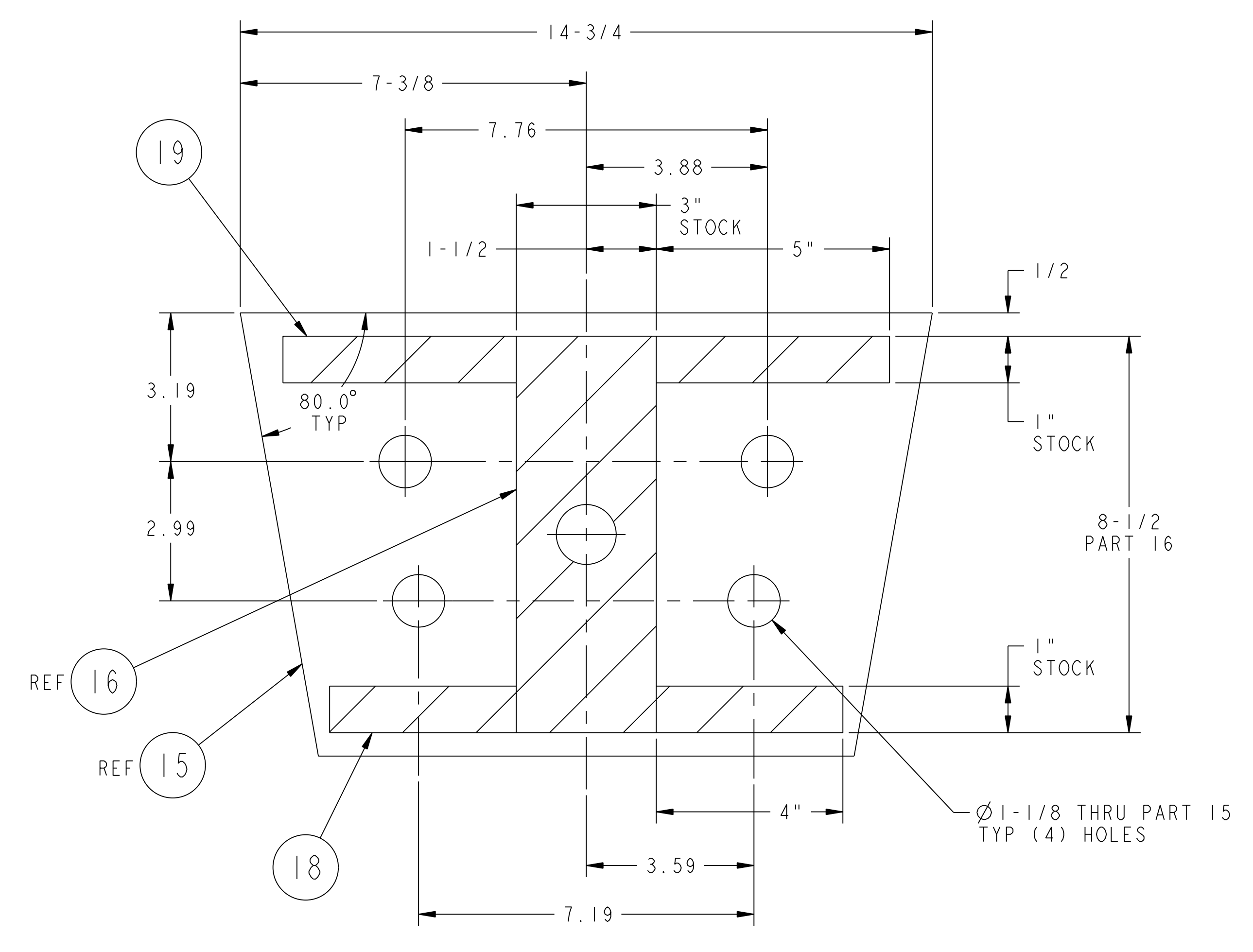
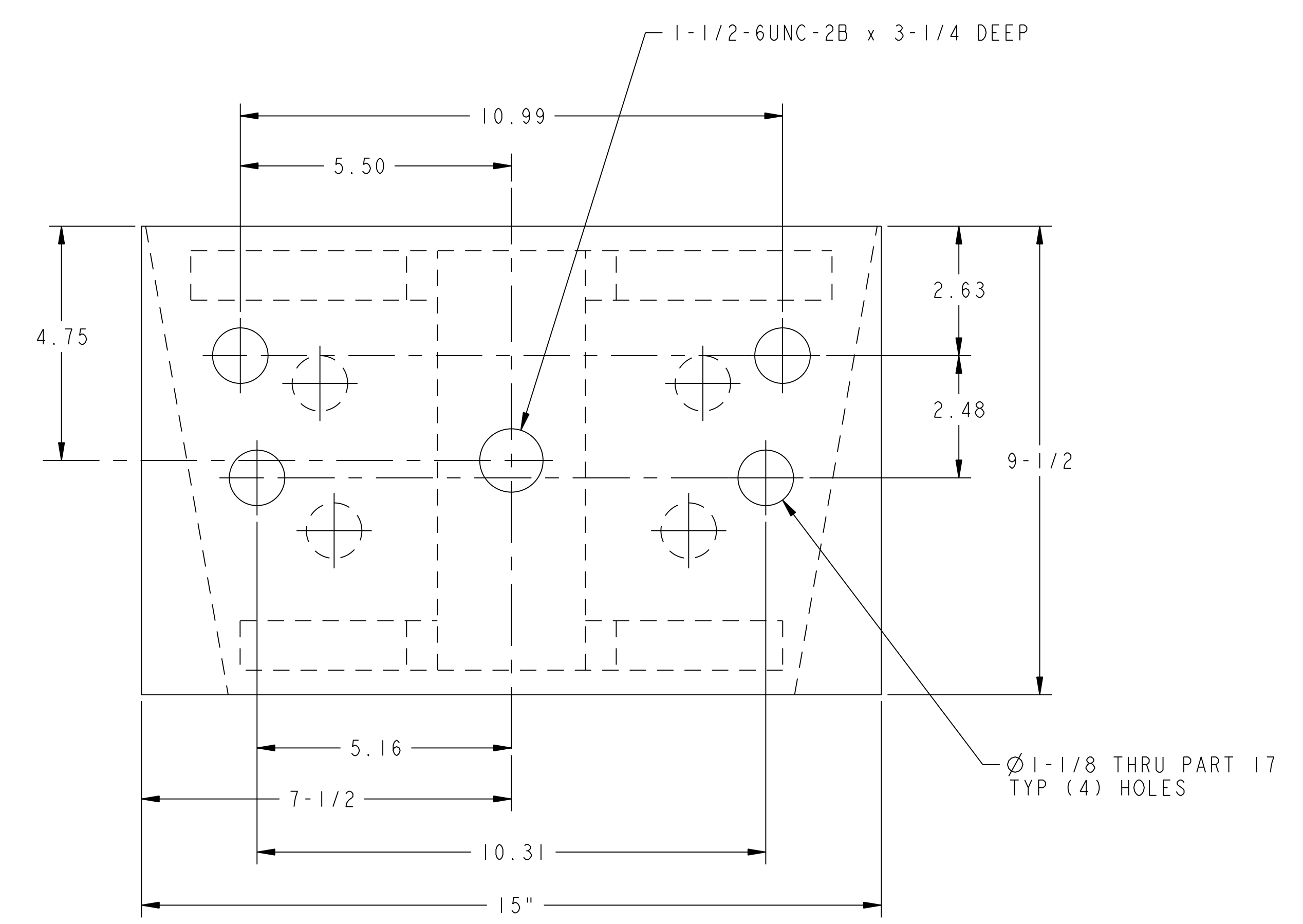
FOR NOTES AND BILL OF MATERIAL SEE SHEET 1

RELEASE LEVEL: Fabrication
DWG VERSION NO: 0

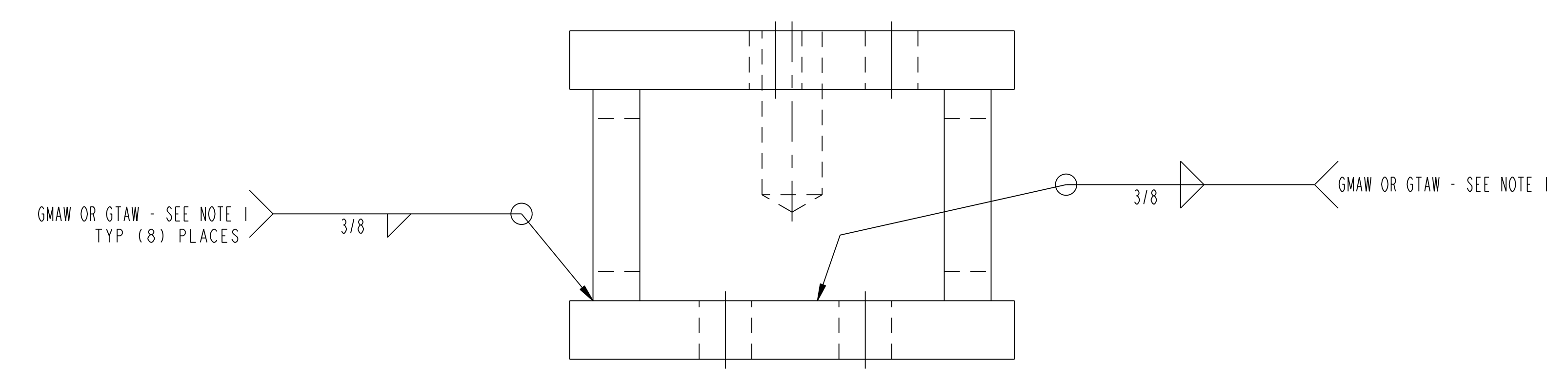
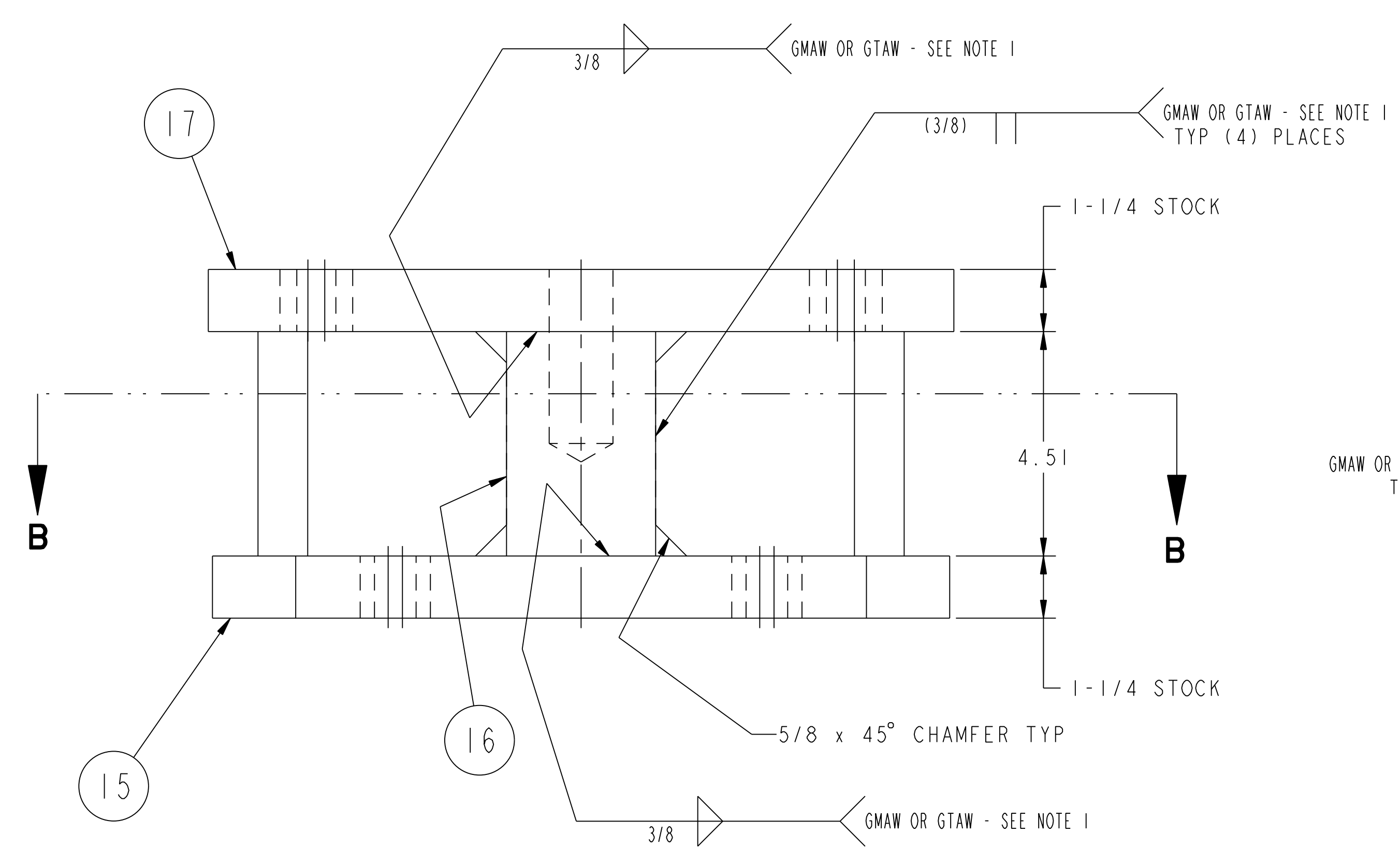
WEIGHT	189.4 lbs
MODEL NAME	SE185-315-02
WELDING ENGINEER	

COMPUTER GENERATED DRAWING MANUAL CHANGES NOT PERMITTED Pro E	CENTRAL FILES: UNLESS OTHERWISE SPECIFIED	PRINCETON PLASMA PHYSICS LABORATORY NATIONAL COMPACT STELLARATOR EXPERIMENT	
DO NOT VERIFY INFORMATION BY SCALING DRAWING	DIMENSIONS ARE IN INCHES MACHINE SURFACES BREAK SHARP EDGES .005/.020	FIELD PERIOD ASSEMBLY FIELD PERIOD ASSEMBLY FIXTURE MCWF HALF PERIOD LIFTING FIXTURE MOUNTING BRACKET WELDMENTS	
NEXT ASSEMBLY	TOLERANCES NON-CUMULATIVE DECIMAL-INCH FRACTIONS .XX ±.000 0°-120° ±.010 .XXX ±.005 90°-120° ±.010 ANGULAR ±.0°-15° OVER 120° ±.1°	DSN: L. MORRIS	11-26-07 DRAWING NO:
		CHK: M. COLE	11-26-07
		ENGR: T. BROWN	11-26-07
		SUPV: J. SIEGEL	11-26-07
			SHEET 3 OF 6
			REV 1.0

NO.	REVISION	BY	CH	SUP	APPROVED	DATE



SECTION B-B



04 ASSEMBLY - MOUNTING BRACKET WELDMENT - TYPE "D"

RELEASED FOR FABRICATION / INSTALLATION
PPPL Drafting

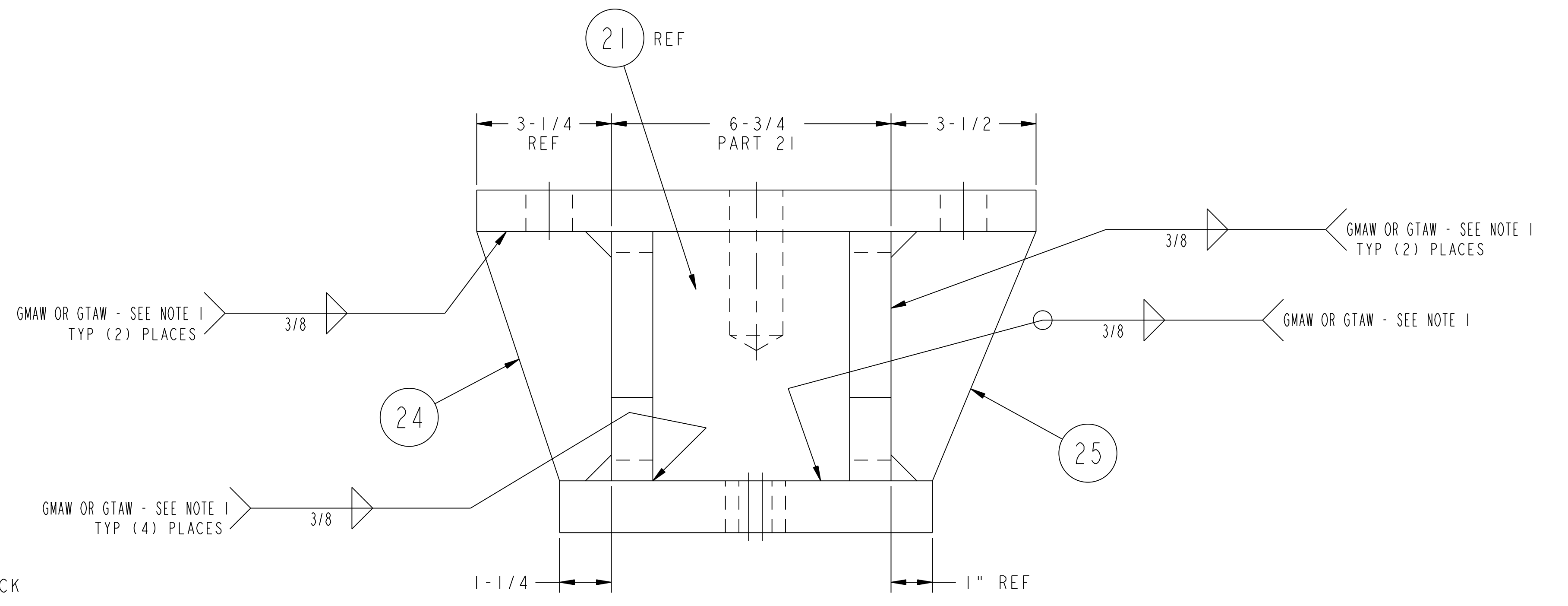
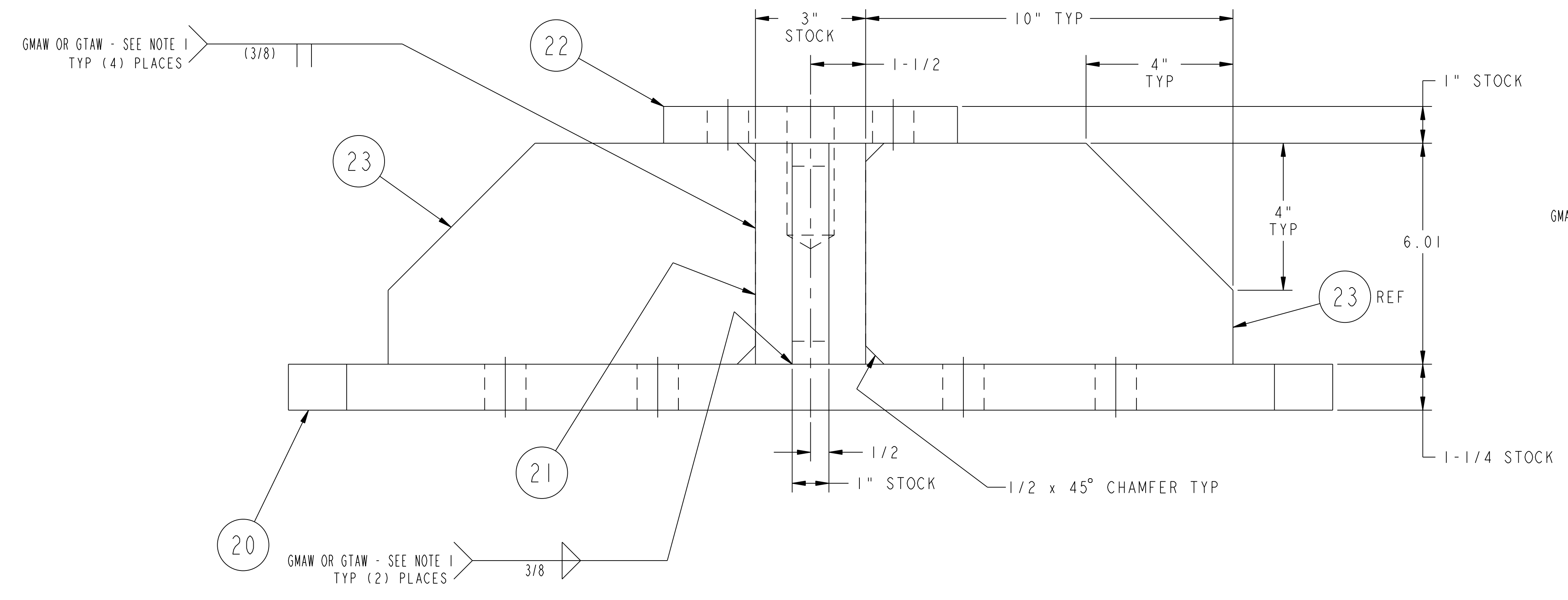
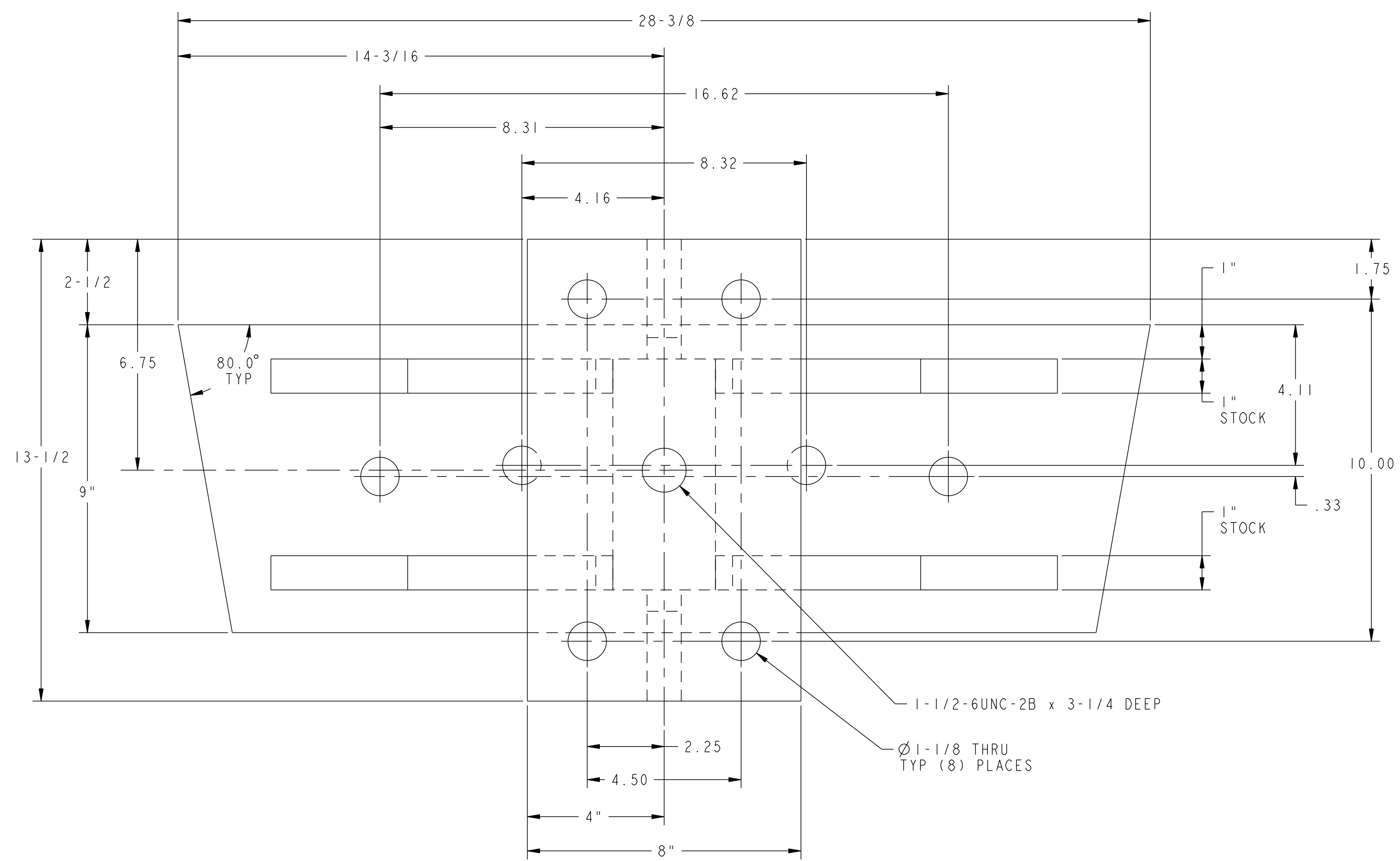
FOR NOTES AND BILL OF MATERIAL SEE SHEET 1

RELEASE LEVEL: Fabrication
DWG VERSION NO: 0

WEIGHT	149.2 lbs
MODEL NAME	SE185-315-04
WELDING ENGINEER	

COMPUTER GENERATED DRAWING MANUAL CHANGES NOT PERMITTED Pro E	CENTRAL FILES: UNLESS OTHERWISE SPECIFIED	PRINCETON PLASMA PHYSICS LABORATORY NATIONAL COMPACT STELLARATOR EXPERIMENT	
DO NOT VERIFY INFORMATION BY SCALING DRAWING	DIMENSIONS ARE IN INCHES MACHINE SURFACES UNLESS OTHERWISE SPECIFIED	FIELD PERIOD ASSEMBLY FIELD PERIOD ASSEMBLY FIXTURE MCWF HALF PERIOD LIFTING FIXTURE MOUNTING BRACKET WELDMENTS	
NEXT ASSEMBLY	TOLERANCES NON-CUMULATIVE DECIMAL-INCH FRACTIONS .XX ±.000 .XXX ±.005 ANGULAR ±.0°-15° OVER 120° ±.1°	DSN: L. MORRIS	11-26-07
		CHK: M. COLE	11-26-07
		ENGR: T. BROWN	11-26-07
		SUPV: J. SIEGEL	11-26-07
		DRAWING NO:	SE185-315
		SHEET 4 OF 6	REV 1.0

NO.	REVISION	BY	CH	SUP	APPROVED	DATE



05 ASSEMBLY - MOUNTING BRACKET WELDMENT - TYPE "E"

RELEASED FOR FABRICATION / INSTALLATION
PPPL Drafting

FOR NOTES AND BILL OF MATERIAL SEE SHEET 1

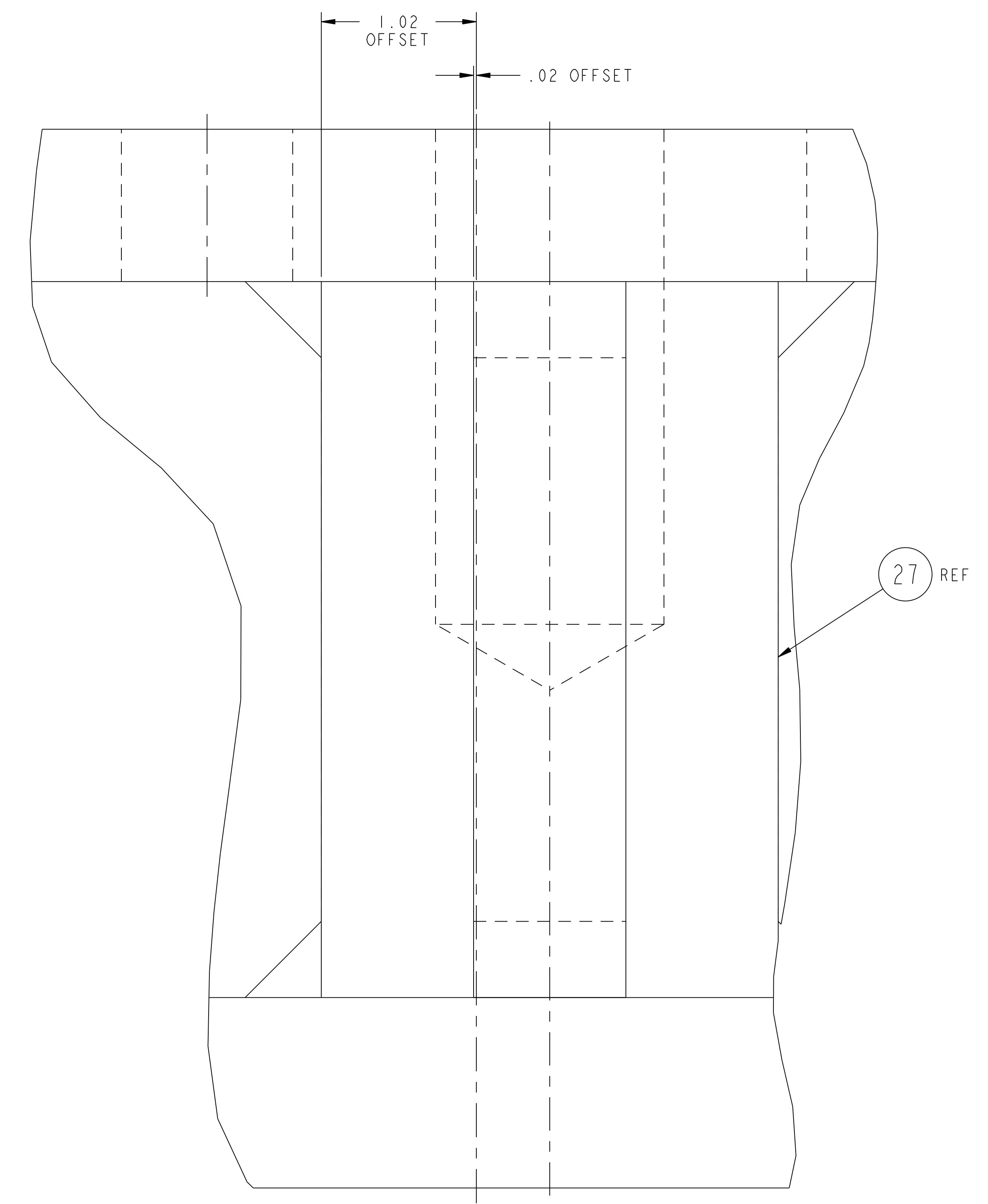
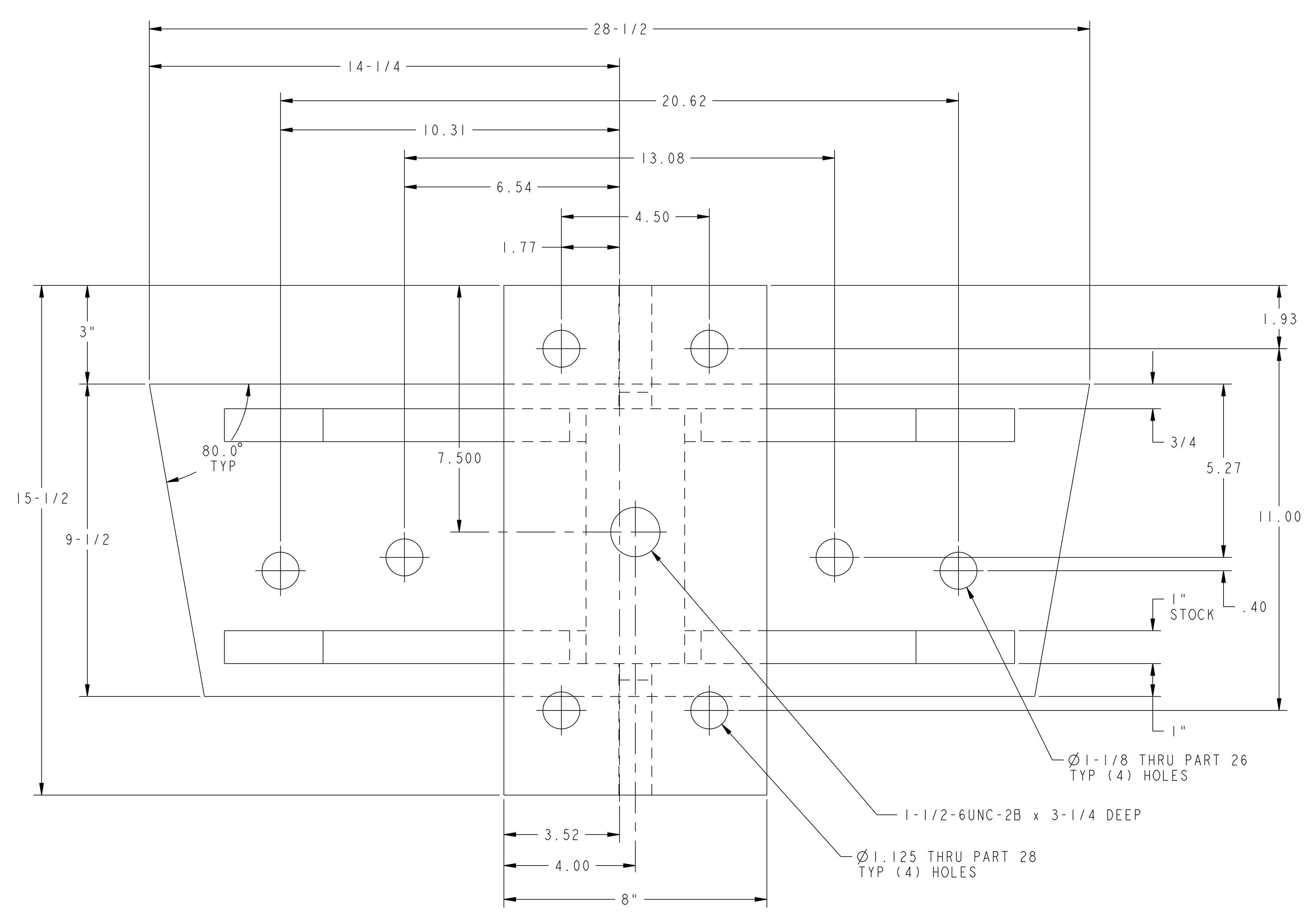
RELEASE LEVEL: Fabrication
DWG VERSION NO: 0

WEIGHT	218.0 lbs
MODEL NAME	SE185-315-05
WELDING ENGINEER	

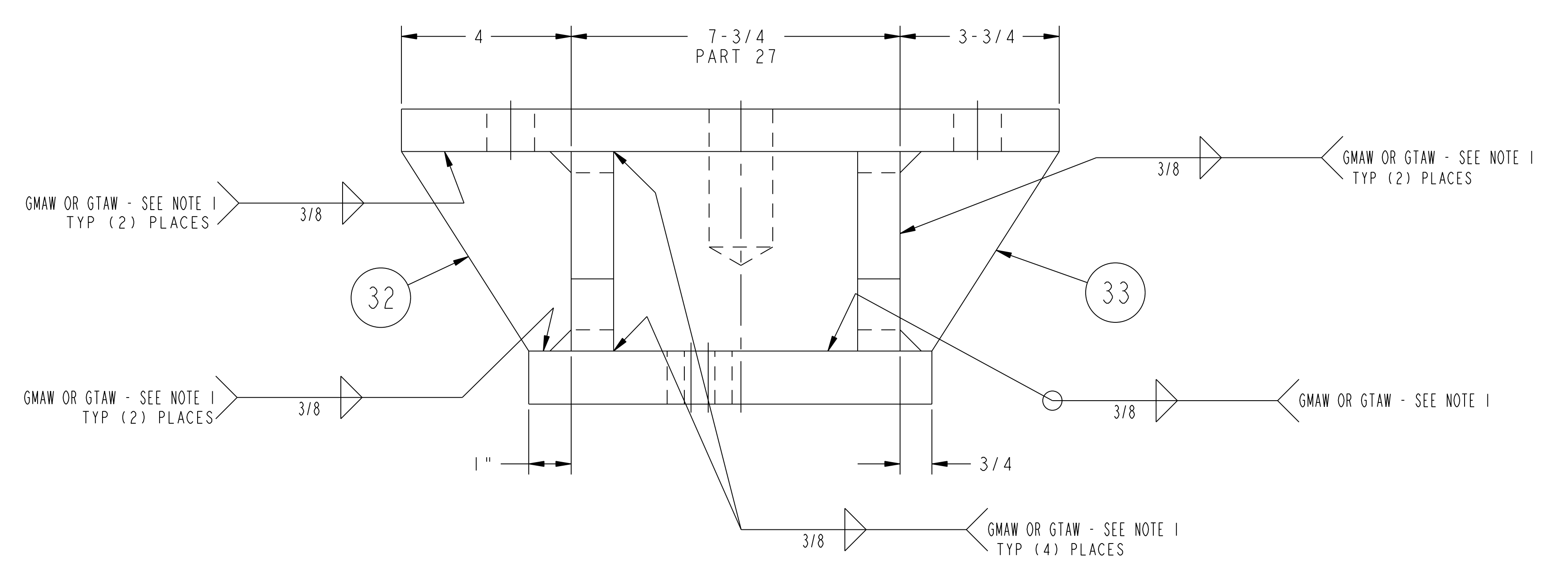
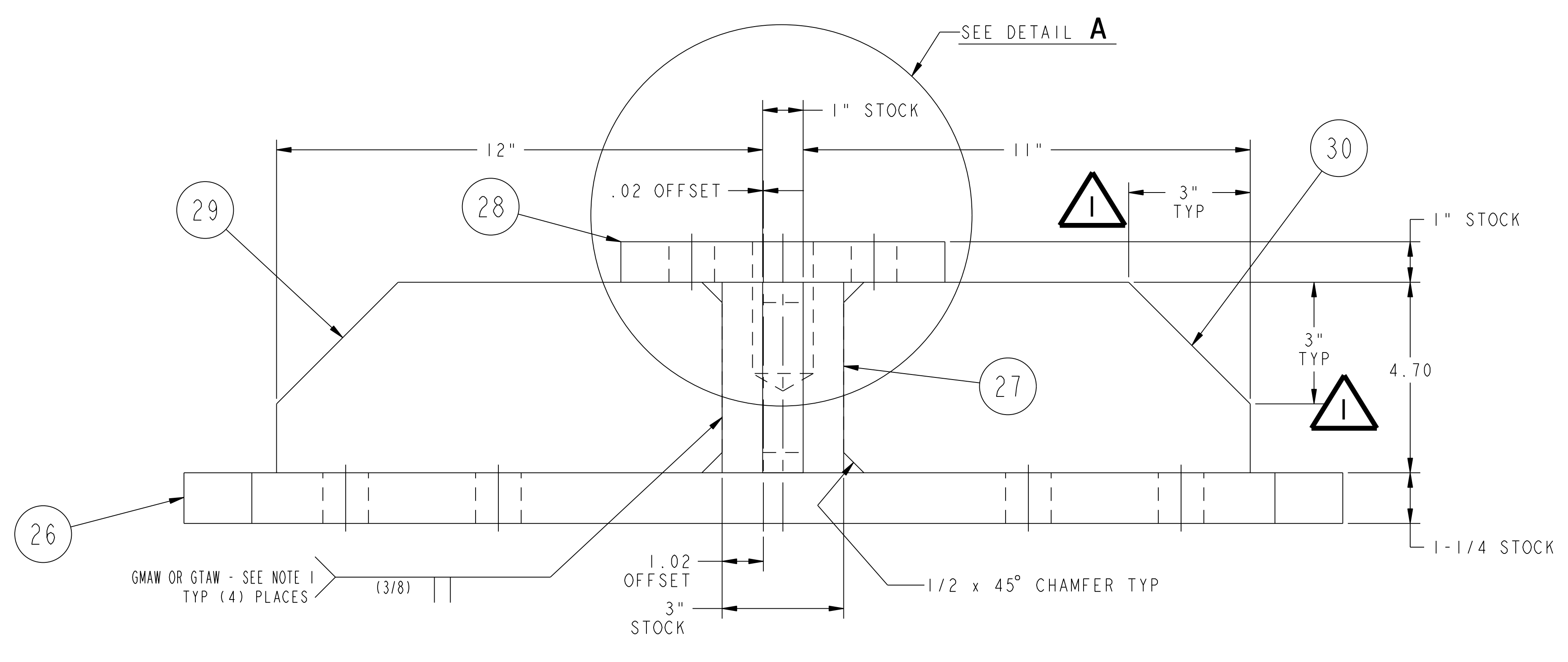
COMPUTER GENERATED DRAWING MANUAL CHANGES NOT PERMITTED Pro E	CENTRAL FILES: UNLESS OTHERWISE SPECIFIED	PRINCETON PLASMA PHYSICS LABORATORY NATIONAL COMPACT STELLARATOR EXPERIMENT
DO NOT VERIFY INFORMATION BY SCALING DRAWING	DIMENSIONS ARE IN INCHES MACHINE SURFACES UNLESS OTHERWISE SPECIFIED BREAK SHARP EDGES .005/.020	FIELD PERIOD ASSEMBLY FIELD PERIOD ASSEMBLY FIXTURE MCWF HALF PERIOD LIFTING FIXTURE MOUNTING BRACKET WELDMENTS
NEXT ASSEMBLY	TOLERANCES NON-CUMULATIVE DECIMAL-INCH FRACTIONS .XX +/- .000 0°-120° +/- .010 .XXX +/- .005 120°-120° +/- .010 ANGULAR +/- 0°-15° OVER 120° +/- .125	DSN: L. MORRIS 11-26-07 DRAWING NO: CHK: M. COLE 11-26-07 ENGR: T. BROWN 11-26-07 SUPV: J. SIEGEL 11-26-07
		SHEET 5 OF 6 REV 1.0

NCSX-SE185-315

NO.	REVISION	BY	CH	SUP	APPROVED	DATE



DETAIL A



06 ASSEMBLY - MOUNTING BRACKET WELDMENT - TYPE "F"

RELEASED FOR FABRICATION/INSTALLATION
PPPL Drafting

FOR NOTES AND BILL OF MATERIAL SEE SHEET 1

RELEASE LEVEL: Fabrication
DWG VERSION NO: 0

WEIGHT	218.0 lbs
MODEL NAME	SE185-315-05
WELDING ENGINEER	

COMPUTER GENERATED DRAWING MANUAL CHANGES NOT PERMITTED Pro E	CENTRAL FILES: UNLESS OTHERWISE SPECIFIED DIMENSIONS ARE IN INCHES MACHINE SURFACES BREAK SHARP EDGES .005/.020	PRINCETON PLASMA PHYSICS LABORATORY NATIONAL COMPACT STELLARATOR EXPERIMENT FIELD PERIOD ASSEMBLY FIELD PERIOD ASSEMBLY FIXTURE MCWF HALF PERIOD LIFTING FIXTURE MOUNTING BRACKET WELDMENTS	
DO NOT VERIFY INFORMATION BY SCALING DRAWING	TOLERANCES NON-CUMULATIVE DECIMAL-INCH FRACTIONS .XX ±.000 0°-120° ±.010 .XXX ±.005 120°-120° ±.010 ANGULAR ±.0°-15° OVER 120° ±.122	DSN: L. MORRIS	11-26-07
NEXT ASSEMBLY		CHK: M. COLE	11-26-07
		ENGR: T. BROWN	11-26-07
		SUPV: J. SIEGEL	11-26-07
		DRAWING NO:	SE185-315
			SHEET 6 OF 6
			REV 1.0

NCSX-SE185-315