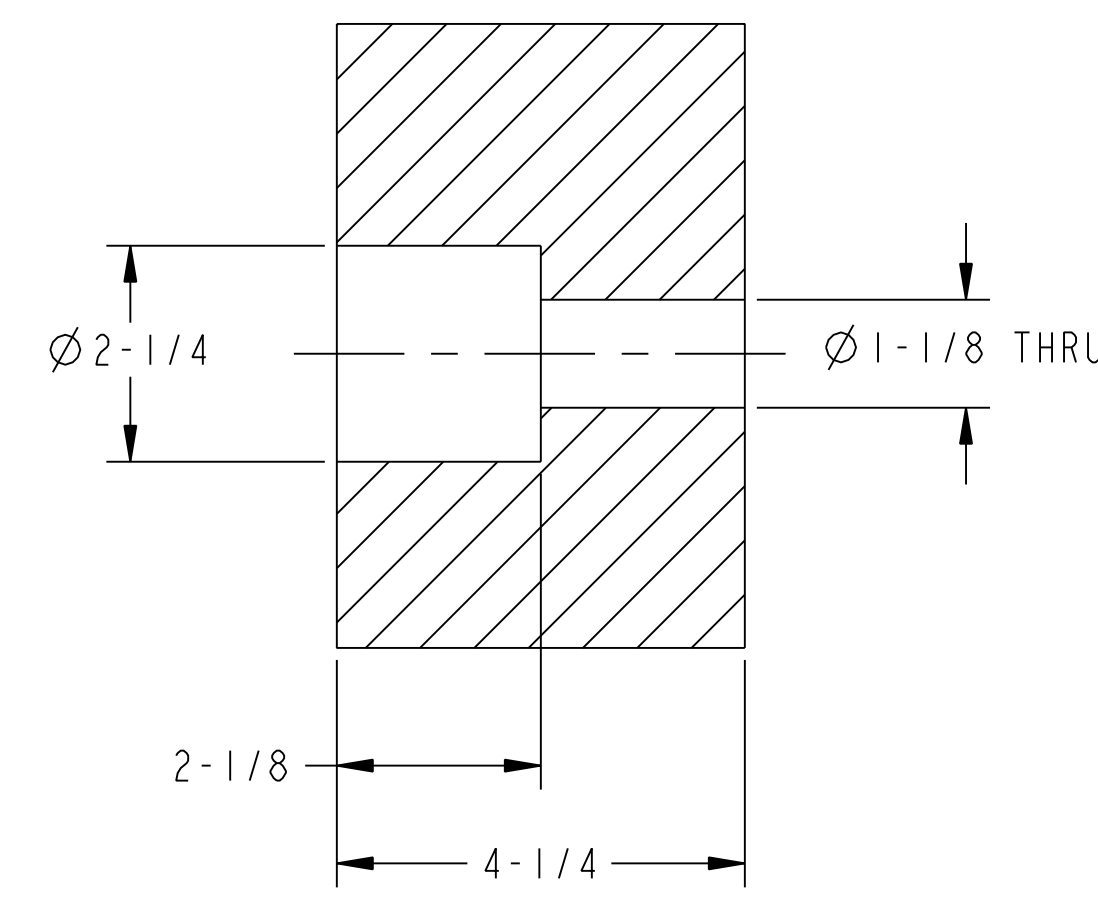
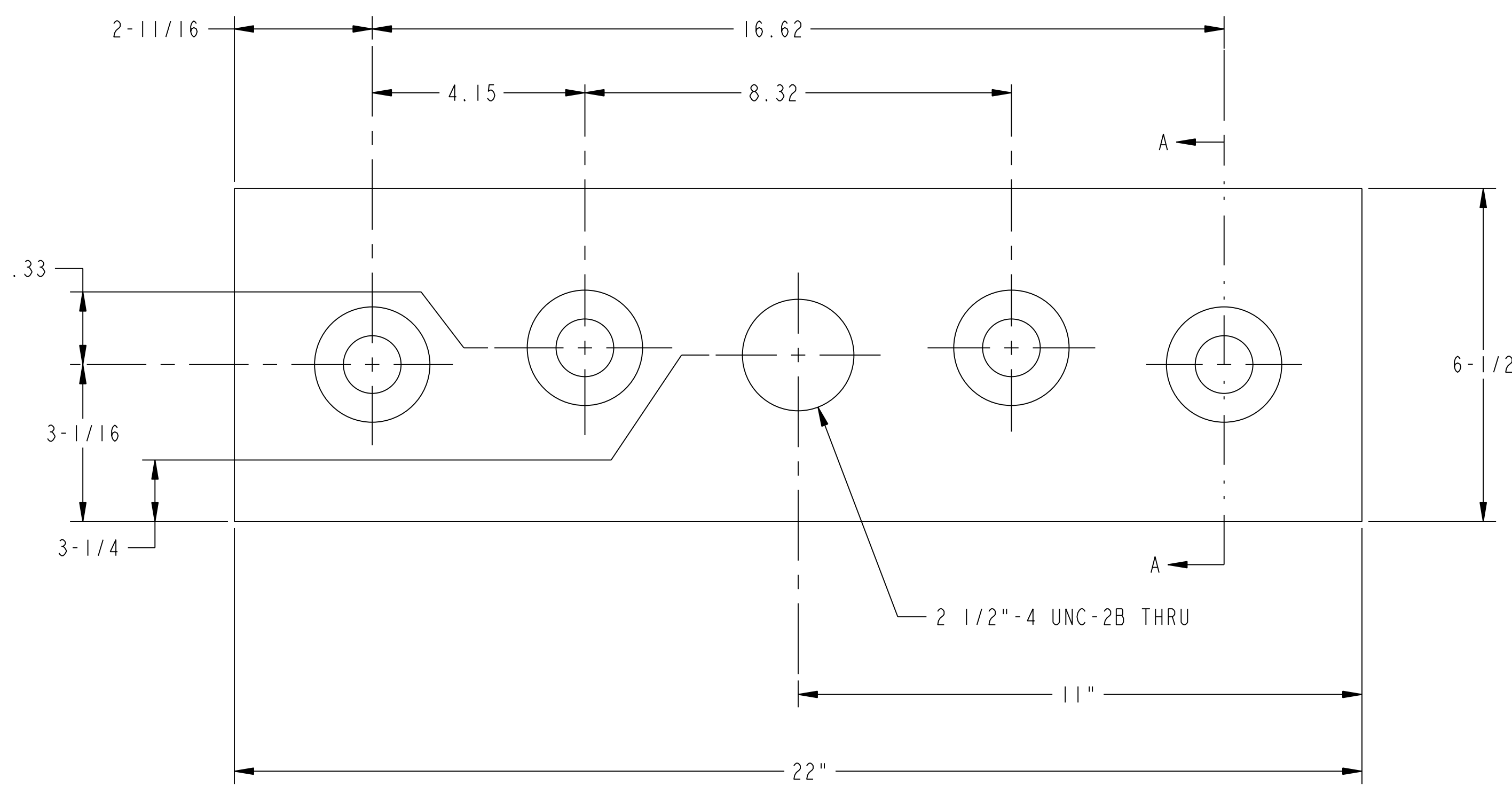


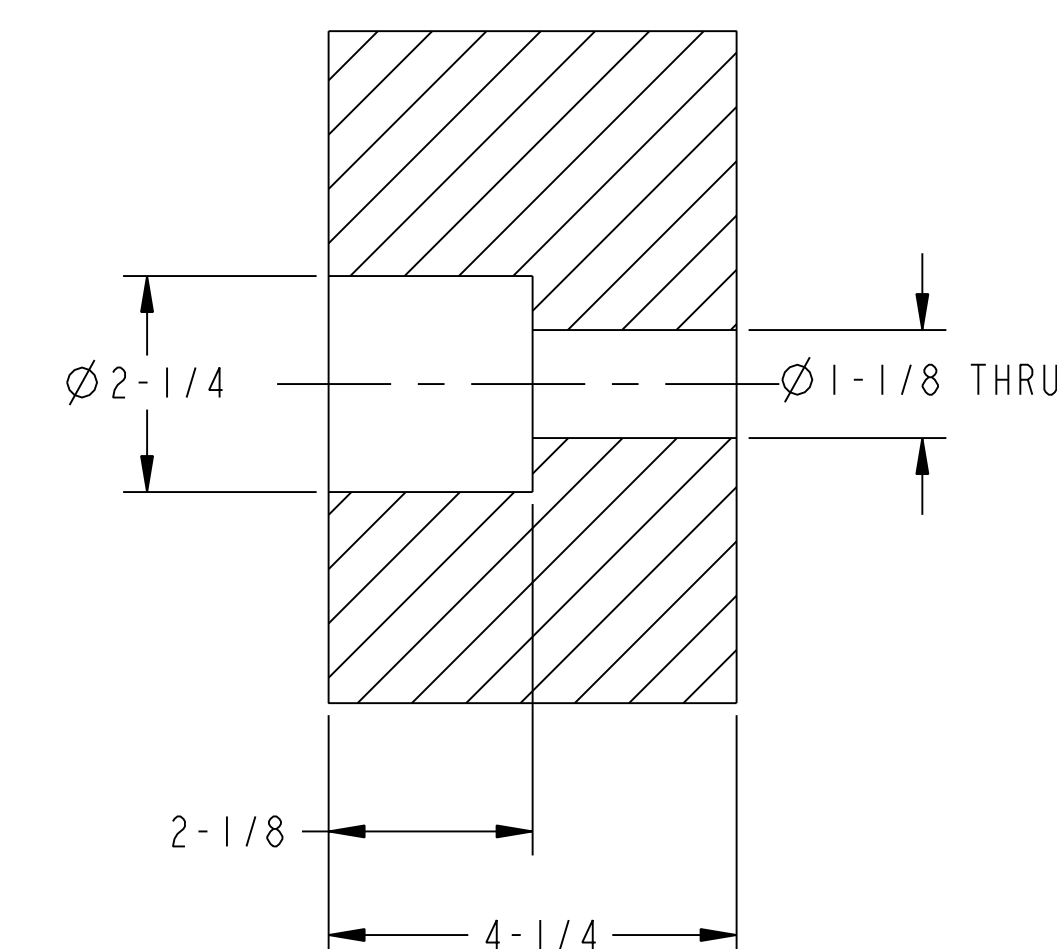
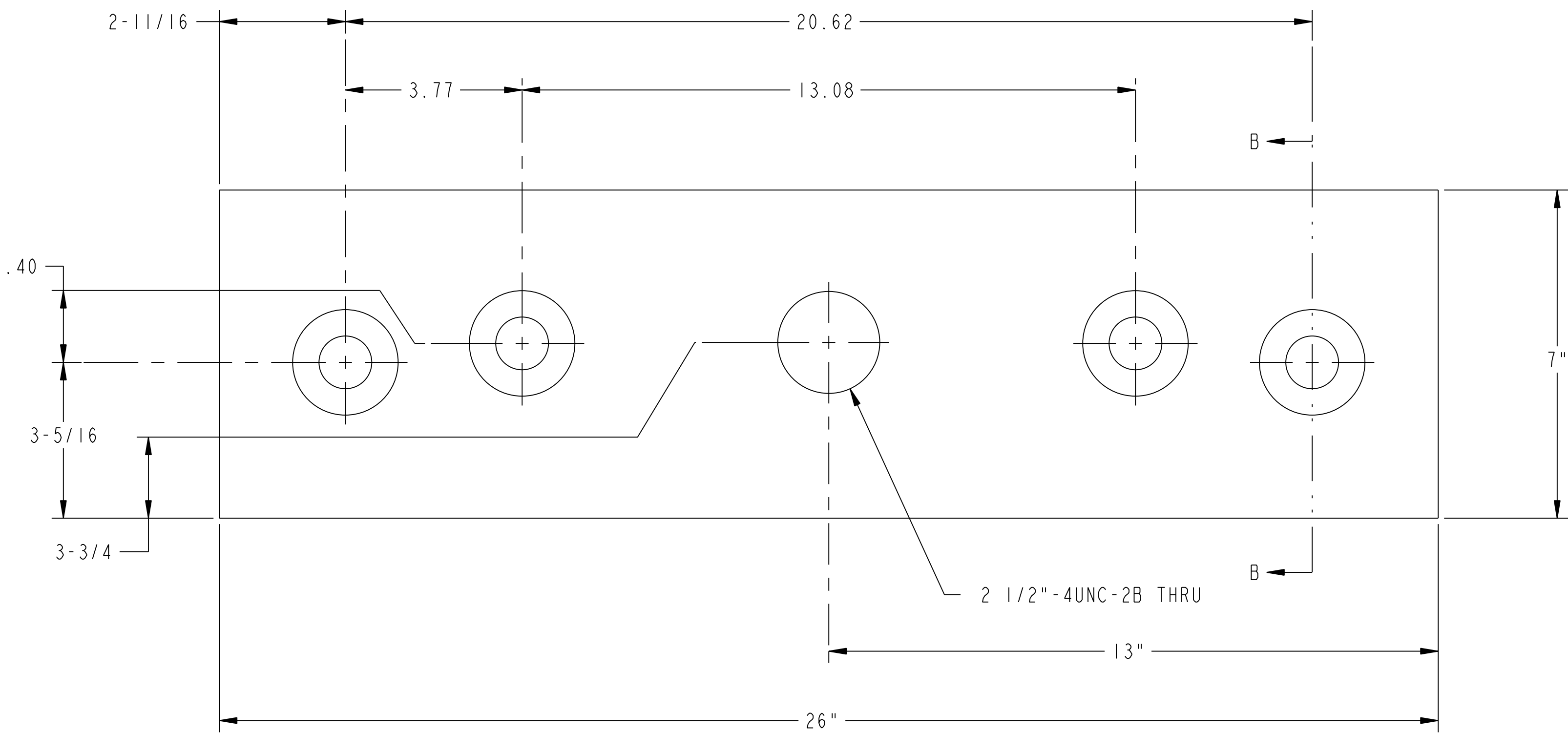
NO.	REVISION	BY	CH	SUP	APPROVED	DATE



**SECTION A-A**  
4 PLACES

1 25 TON HOIST BLOCK FOR TYPE-C OUTBOARD FOOT  
(2) REQ'D

NOTE:  
1. EACH LIFTING BLOCK IS TO BE CLEARLY MARKED WITH THE WORKING LOAD LIMIT OF 50000# AND THE WEIGHT OF THE BLOCK IN 1/4" HIGH LETTERS BY EITHER STAMPING OR PERMANENT INDELIBLE INK.



**SECTION B-B**  
4 PLACES

2 25 TON HOIST BLOCK FOR TYPE-C OUTBOARD FOOT  
(1) REQ'D

**RELEASED FOR FABRICATION / INSTALLATION**  
PPPL Drafting

2	THIS DWG	25 TON HOIST BLOCK FOR TYPE-A OUTBOARD FOOT	ASTM A36	1
1	THIS DWG	25 TON HOIST BLOCK FOR TYPE-C OUTBOARD FOOT	ASTM A36	2
PART NO.	DRAWING NO.	NOMENCLATURE OR DESCRIPTION	MATERIAL	QTY REQ'D
PARTS LIST				
COMPUTER GENERATED DRAWING MANUAL CHANGES NOT PERMITTED Pro E		CENTRAL FILES: UNLESS OTHERWISE SPECIFIED DIMENSIONS ARE IN INCHES MACHINE SURFACES UNLESS OTHERWISE SPECIFIED BREAK SHARP EDGES .005/.020	PRINCETON PLASMA PHYSICS LABORATORY PRINCETON UNIVERSITY <b>NATIONAL COMPACT STELLARATOR EXPERIMENT</b> FIELD PERIOD ASSEMBLY FIXTURE 25 TON HOIST BLOCKS FOR OUTBOARD FOOT	
DO NOT VERIFY INFORMATION BY SCALING DRAWING		TOLERANCES NON-CUMULATIVE DECIMAL-INCH FRACTIONS .XX ±.005 .XXX ±.005 ANGULAR ±.0°-15° OVER 120° ±.1°	DSN: R. UPCAVAGE CHK: M. VIOLA ENGR: T. BROWN SUPV: J. SIEGEL	4-29-08 4-29-08 4-29-08 4-29-08
NEXT ASSEMBLY		WEIGHT 159.4 lbs	DRAWING NO: <b>SE185-328</b>	
MODEL NAME SE185-328-2		WELDING ENGINEER	SHEET 1 OF 1 REV 0	
RELEASE LEVEL: Fabrication DWG VERSION NO: 4		NCSX-PART-FORMAT.E		

NCSX-SE185-328