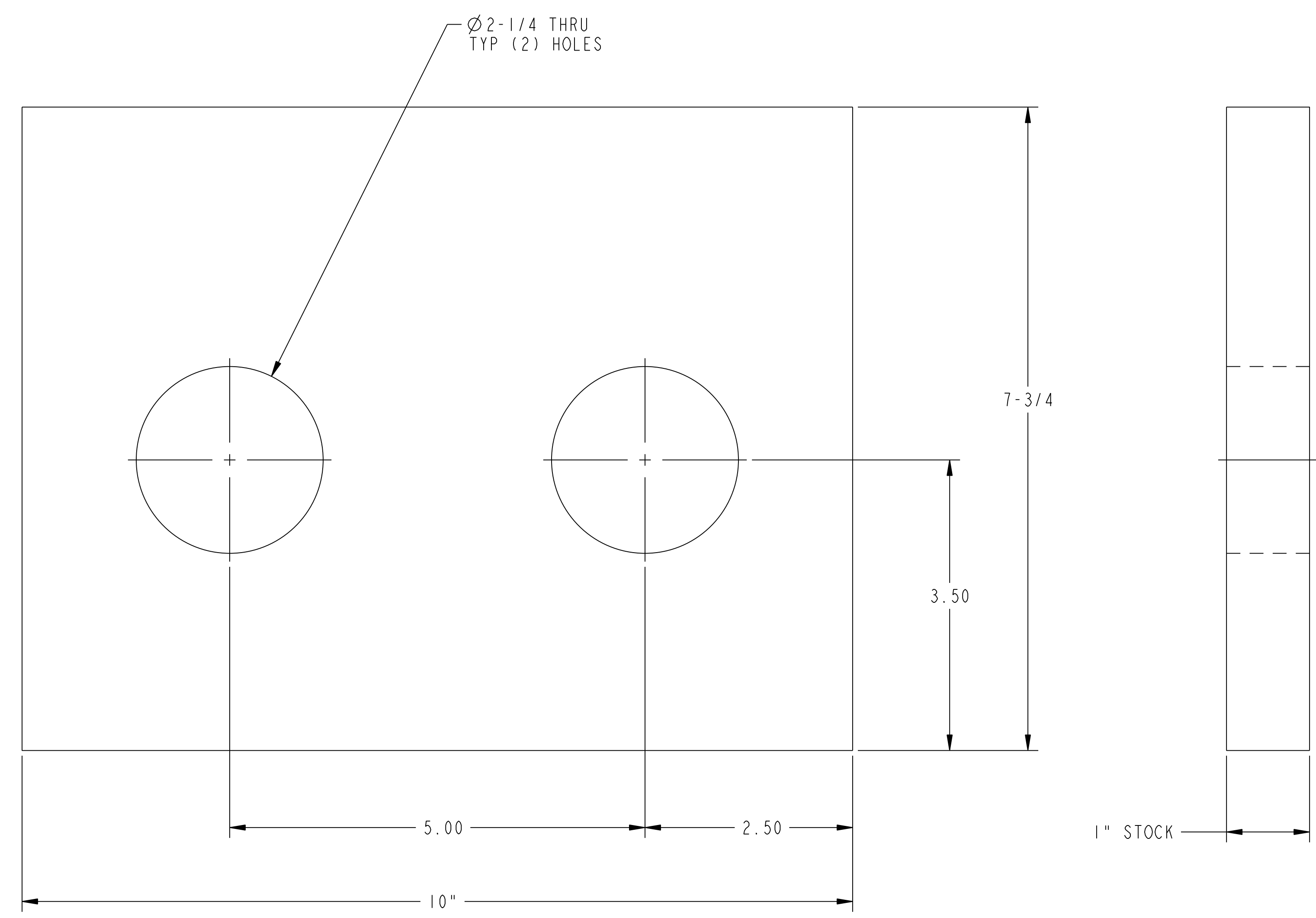
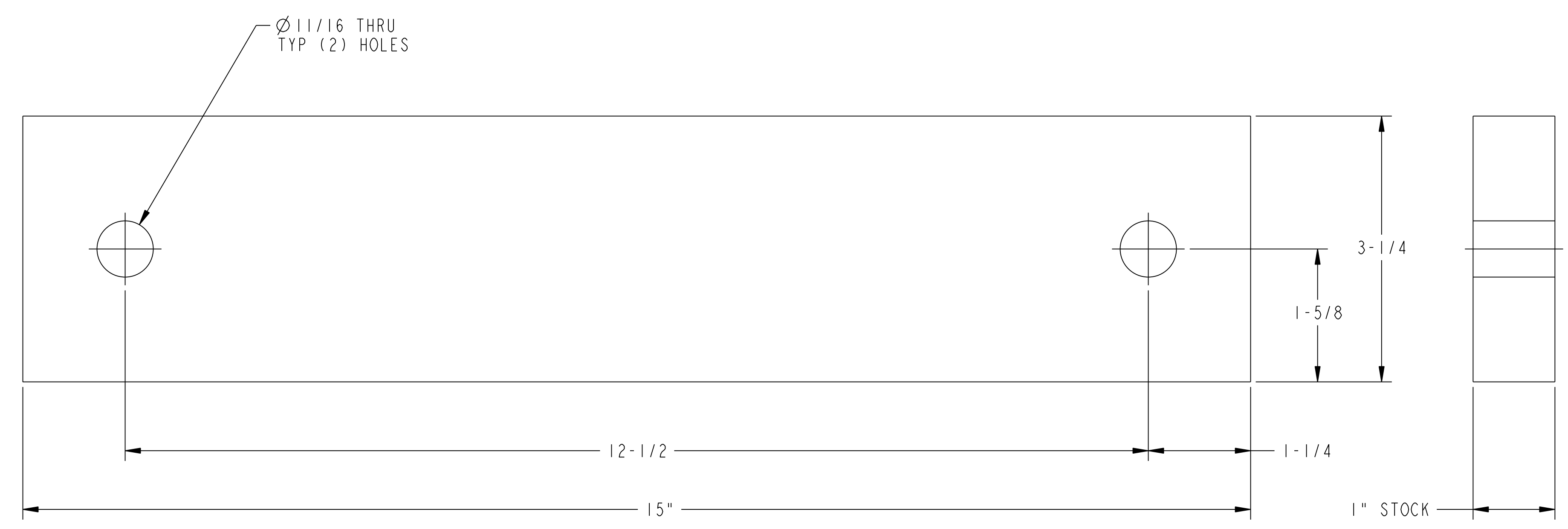


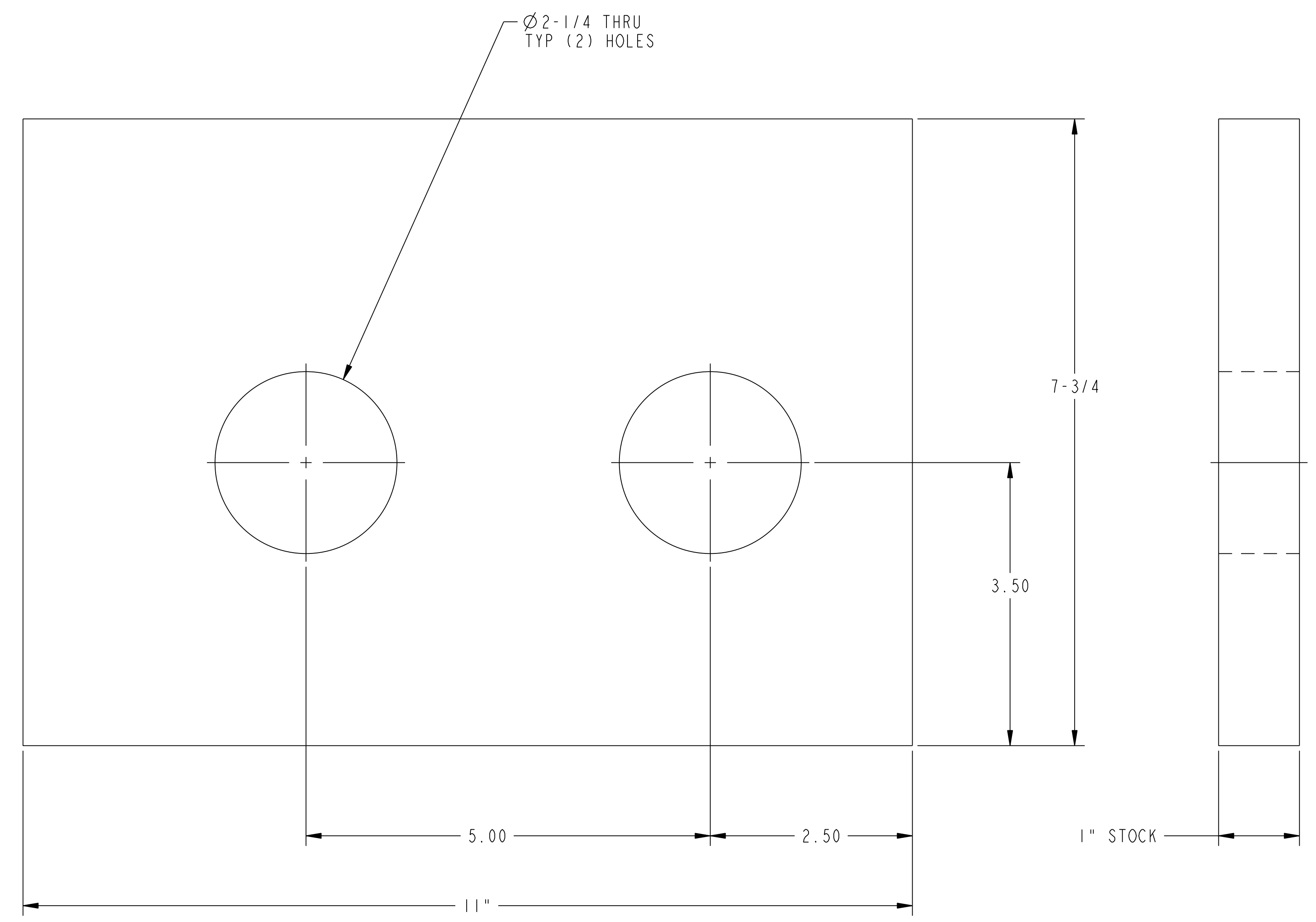
NO.	REVISION	BY	CH	SUP	APPROVED	DATE



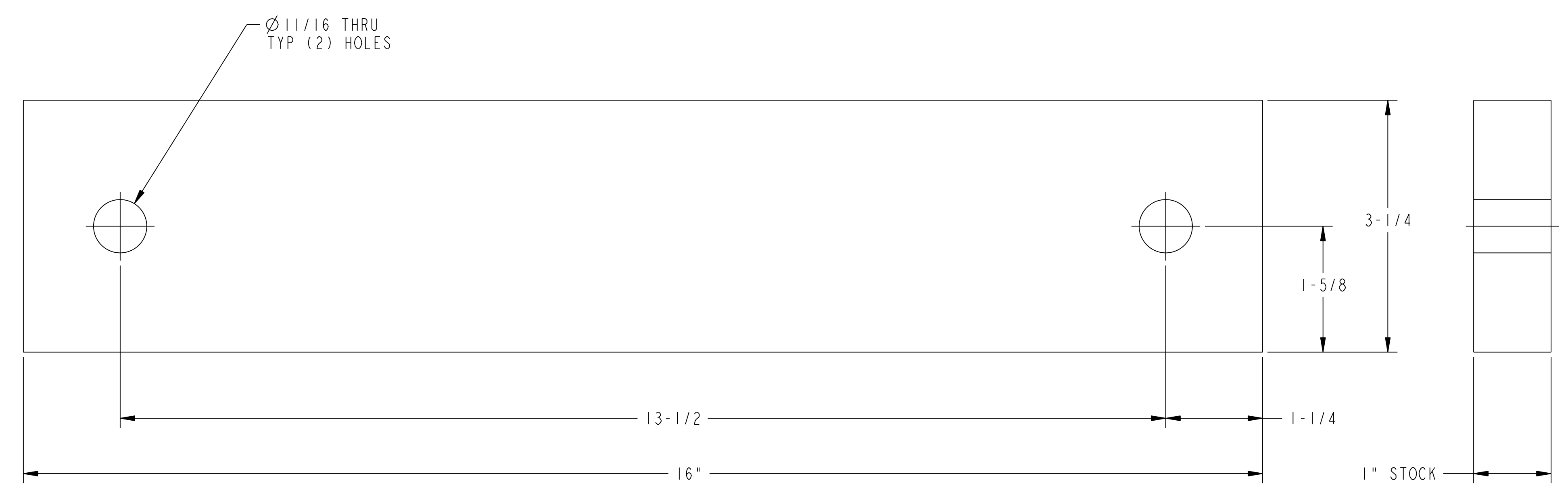
① ANTI-TIPPING PLATE SHIM - TYPE "A"
(2) REQ'D



② ANTI-TIPPING PLATE SHIM - TYPE "B"
(2) REQ'D



③ ANTI-TIPPING PLATE SHIM - TYPE "C"
(2) REQ'D



④ ANTI-TIPPING PLATE SHIM - TYPE "D"
(2) REQ'D

RELEASED FOR
FABRICATION / INSTALLATION
PPPL Drafting

PART NO.	DRAWING NO.	NOMENCLATURE OR DESCRIPTION	MATERIAL	QTY REQ'D
4	THIS DWG	ANTI-TIPPING PLATE SHIM - TYPE "D"	ASTM A36	2
3	THIS DWG	ANTI-TIPPING PLATE SHIM - TYPE "C"	ASTM A36	2
2	THIS DWG	ANTI-TIPPING PLATE SHIM - TYPE "B"	ASTM A36	2
1	THIS DWG	ANTI-TIPPING PLATE SHIM - TYPE "A"	ASTM A36	2

PARTS LIST				
COMPUTER GENERATED DRAWING CHANGES NOT PERMITTED	CENTRAL FILES:	PRINCETON PLASMA PHYSICS LABORATORY		
PRO E	UNLESS OTHERWISE SPECIFIED	NATIONAL COMPACT STELLARATOR EXPERIMENT		
DO NOT VERIFY INFORMATION BY SCALING DRAWING	DIMENSIONS ARE IN INCHES MACHINE SURFACES UNLESS OTHERWISE SPECIFIED	FIELD PERIOD ASSEMBLY		
	BREAK SHARP EDGES .005/.020	FIELD PERIOD ASSEMBLY FIXTURE		
	TOLERANCES NON-CUMULATIVE	DSN: L. MORRIS	7-1-08	DRAWING NO:
	DECIMAL-INCH FRACTIONS	CHK: T. BROWN	7-1-08	SE186-329
	XX +/- .000 0°-12° +/- .010	ENGR: T. BROWN	7-1-08	
	XXX +/- .005 12°-120° +/- .010	SUPV: J. SIEGEL	7-1-08	SHEET 1 OF 1 REV 0.1
	ANGULAR +/- .0°-15° OVER 120° +/- .12°			

WEIGHT: 22.4 lbs
MODEL NAME: SE186-329-1
RELEASE LEVEL: Fabrication
DWG VERSION NO: 0

NCSX-SE186-329

NCSX-PART-FORMAT.E