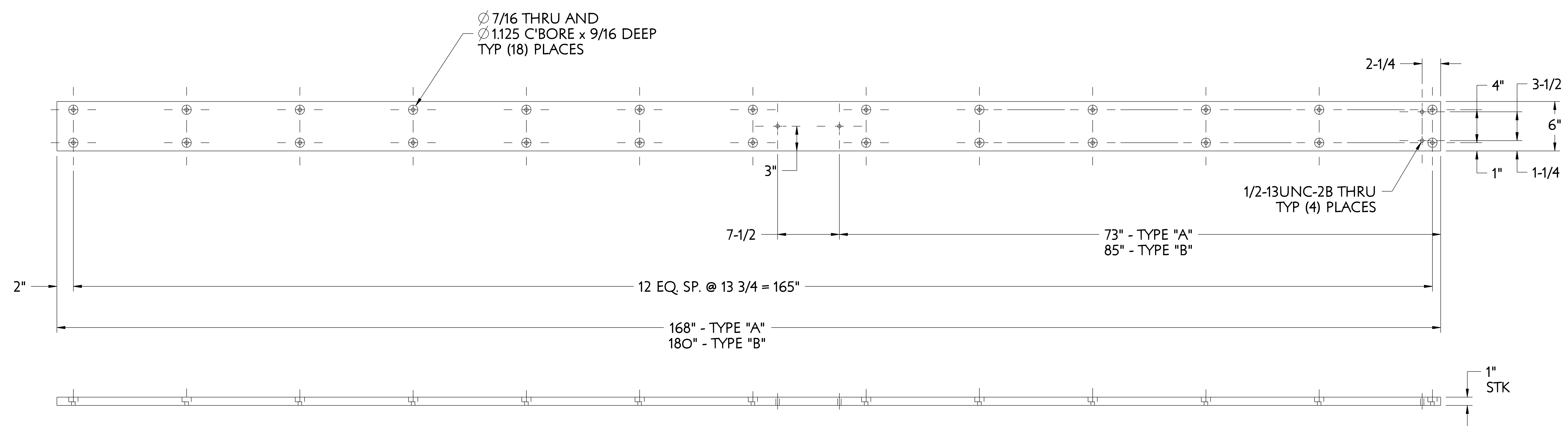
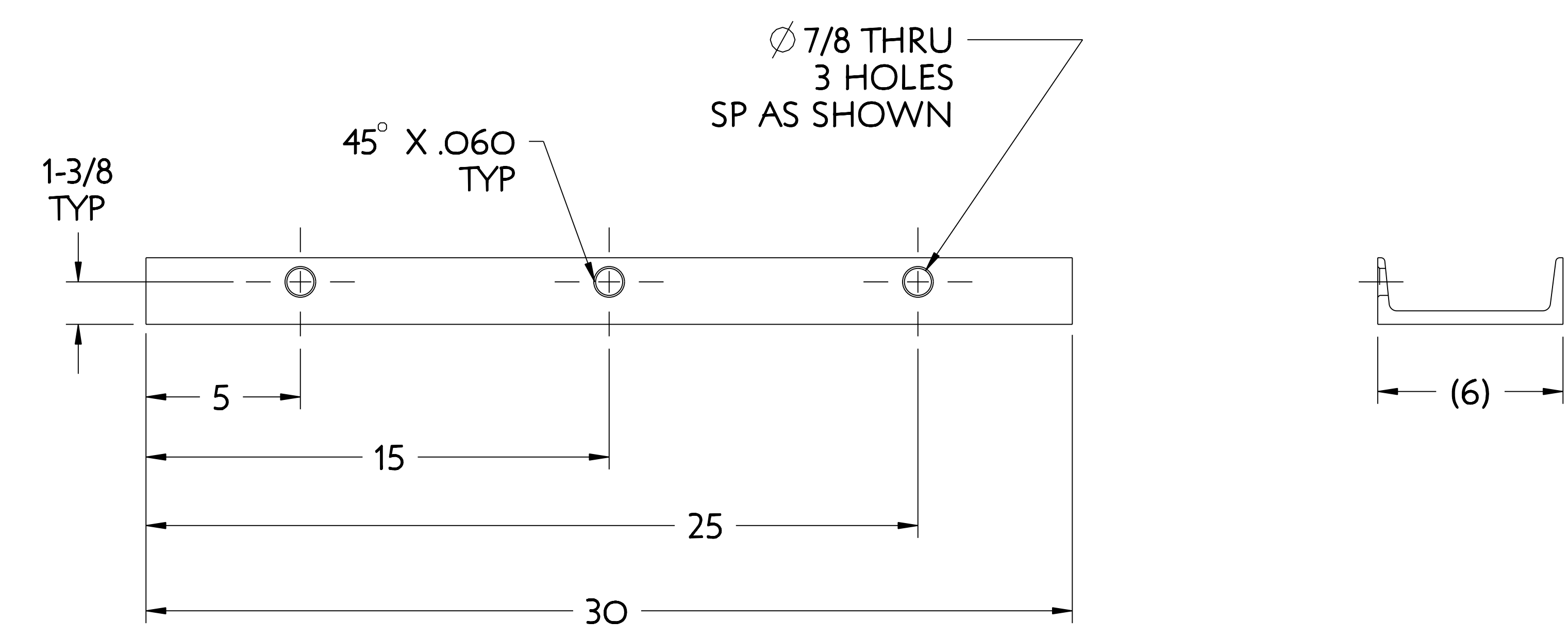


NO.	REVISION	BY	CH	SUP	APPROVED	DATE



- 1 FLOOR MOUNTED ROLLER TRACK - TYPE "A"
- 7 FLOOR MOUNTED ROLLER TRACK - TYPE "B"

**MAKE FROM 1 X 6 BAR**



**ANTI TIP CHANNEL**  
**MAKE FROM 6" X 13.0# CHANNEL**

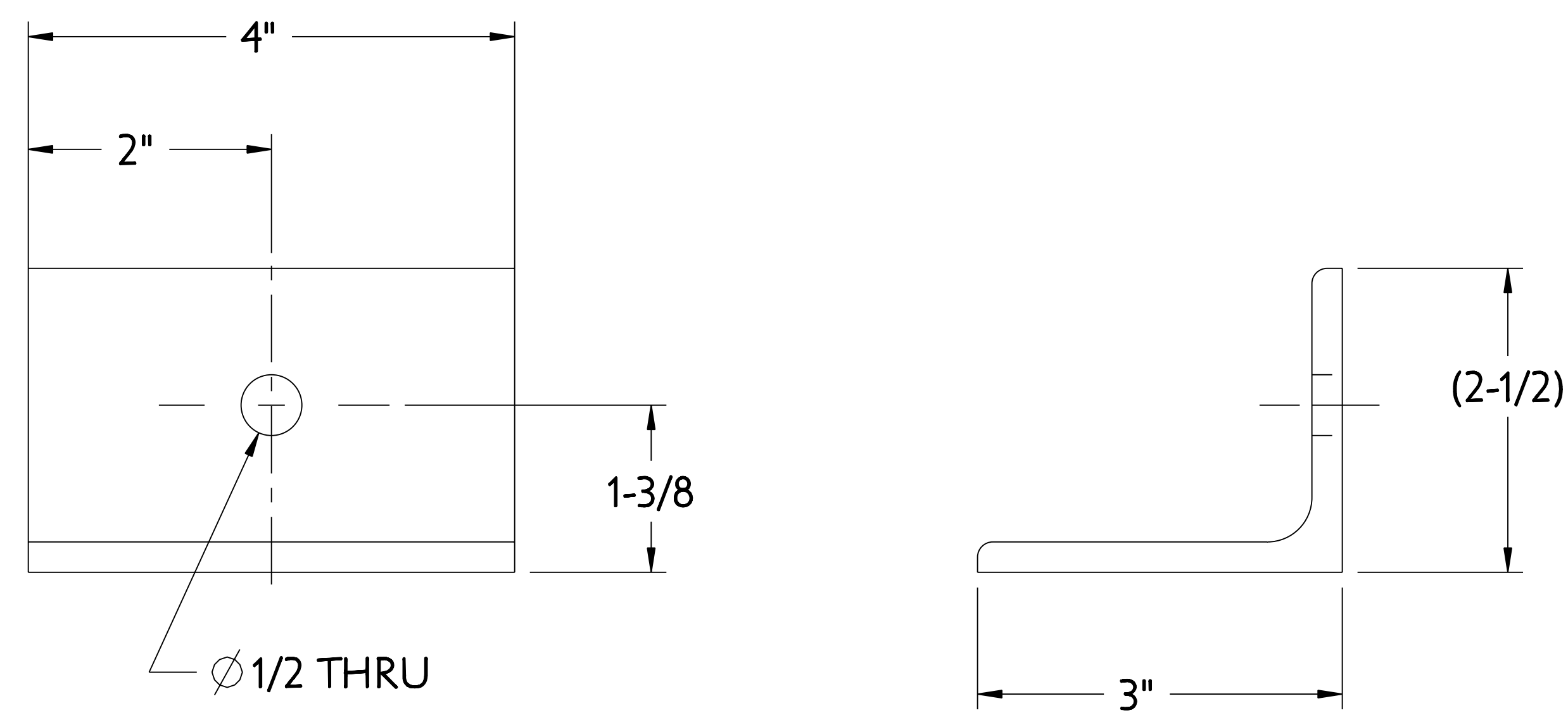
**RELEASED FOR FABRICATION / INSTALLATION**  
PPPL Drafting

PART NO.	DRAWING/MODEL NO	NOMENCLATURE OR DESCRIPTION	MATERIAL	QTY RECD
7	SE186-331-7	FLOOR MOUNTED ROLLER TRACK - TYPE "B"	ASTM A36	
6	SE186-331-6	SUPPORT GUSSET	ASTM A36	
5	SE186-331-5	STOP BLOCK	ASTM A36	
4	SE186-331-4	CLAMPING THREADED BOSS	CARBON STEEL	
3	SE186-331-3	FLOOR BOLTING CLIP	CARBON STEEL	
2	SE186-331-2	ANTI-TIP CHANNEL	CARBON STEEL	
1	SE186-331-1	FLOOR MOUNTED ROLLER TRACK - TYPE "A"	CARBON STEEL	

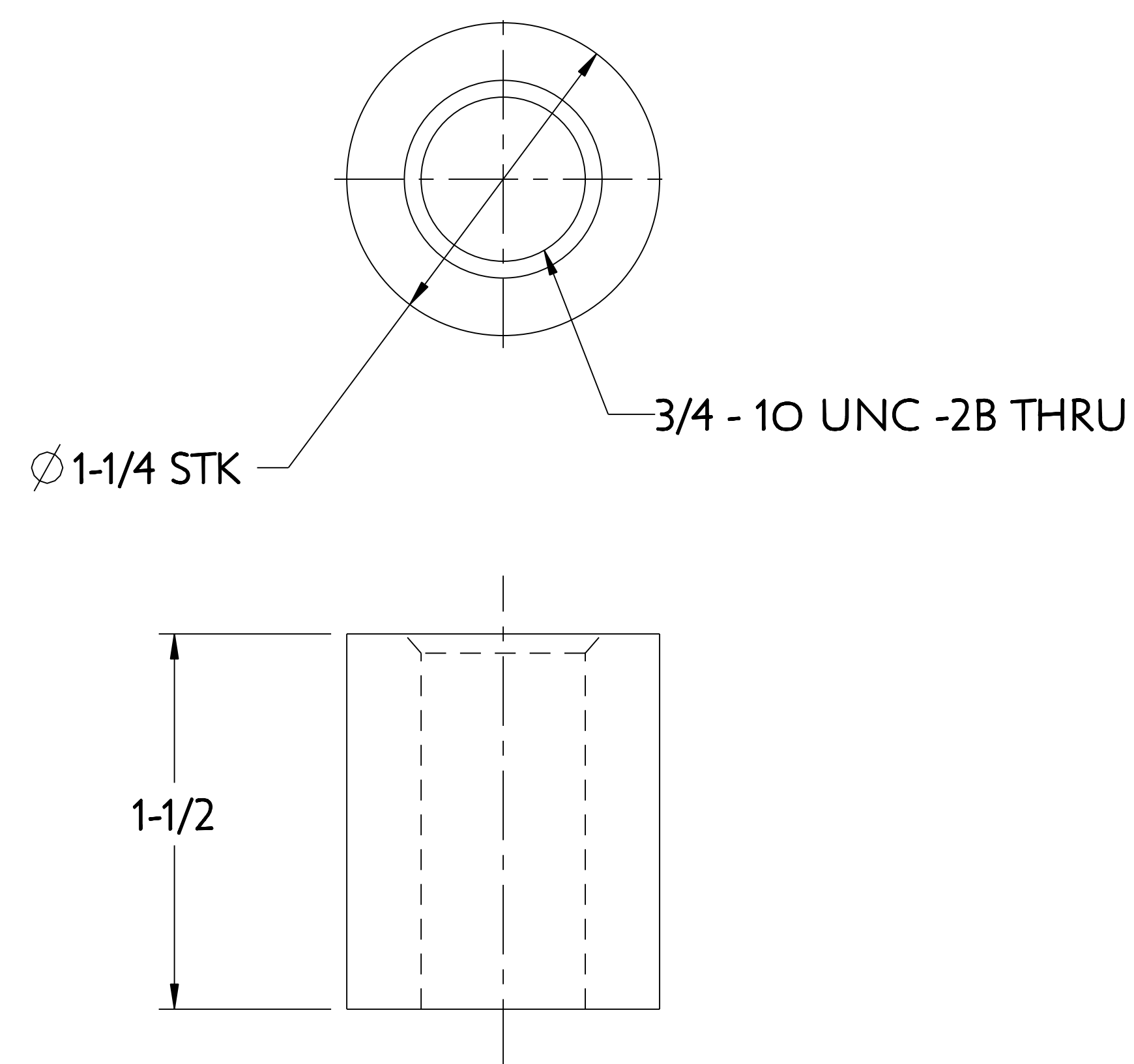
COMPUTER GENERATED DRAWING MANUAL CHANGES NOT PERMITTED	CENTRAL FILES: UNLESS OTHERWISE SPECIFIED	PRINCETON PLASMA PHYSICS LABORATORY PRINCETON UNIVERSITY <b>NATIONAL COMPACT STELLARATOR EXPERIMENT</b>	
PRO E	DIMENSIONS ARE IN INCHES MACHINE SURFACES UNLESS OTHERWISE SPECIFIED	STELLARATOR CORE TOOLING DESIGN & FABRICATION MCWF SUPPORT CART MISCELLANEOUS DETAILS	
DO NOT VERIFY INFORMATION BY SCALING DRAWING	TOLERANCES NON-CUMULATIVE BREAK SHARP EDGES .005/.020	DSN: J. RUSHINSKI 8-2-2007	DRAWING NO: SE186-331
WEIGHT 287.4 lbs	MODEL NAME SE186-331-1	CHK: M. COLE 8-2-2007	ENGR: T. BROWN 8-2-2007
RELEASE LEVEL: Fabrication	DWG VERSION NO: 11	WELDING ENGINEER	SUPV: J. SIEGEL 8-2-2007
		SHEET 1 OF 2 REV 0	

NCSX-SE186-331

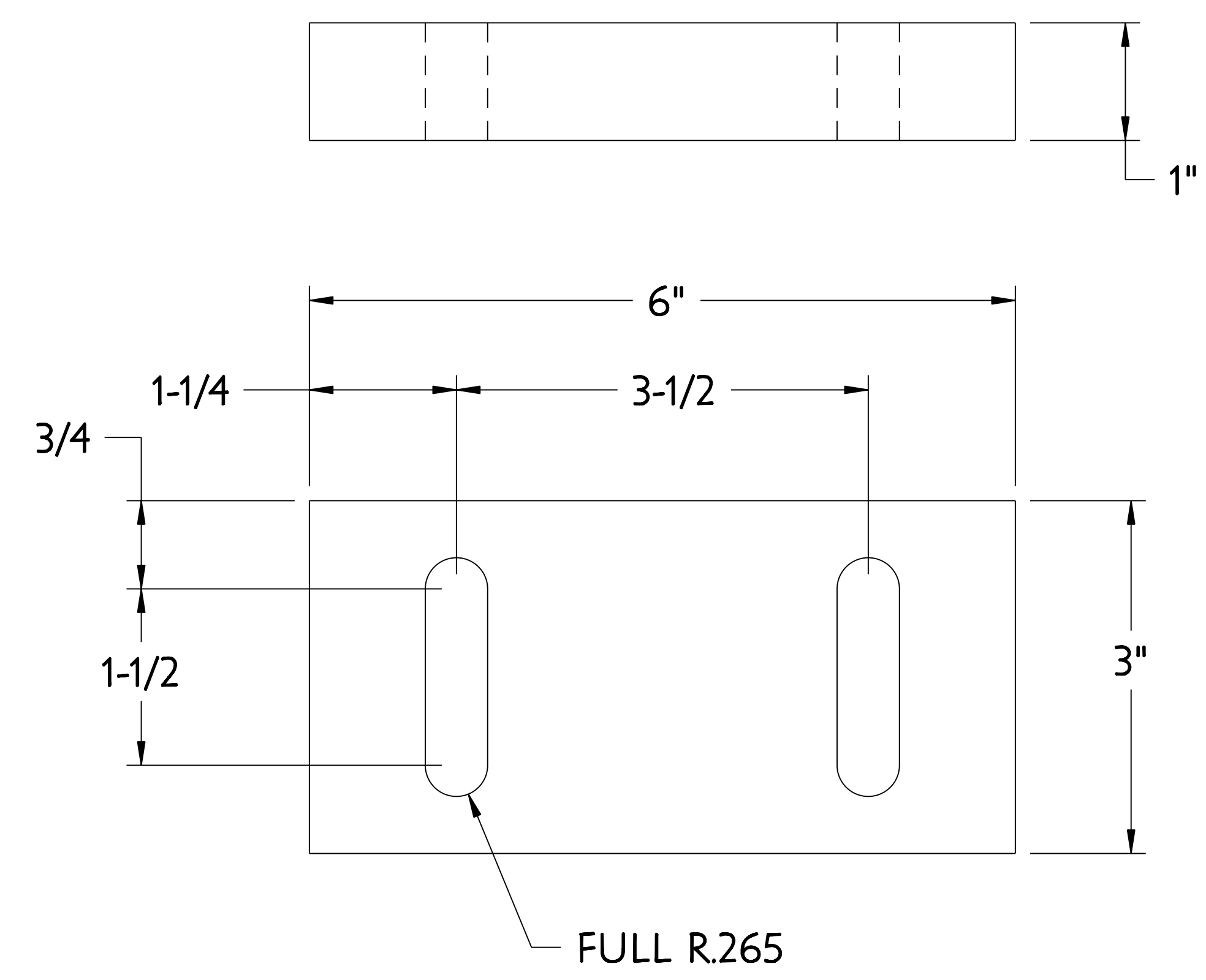
NO.	REVISION	BY	CH	SUP	APPROVED	DATE



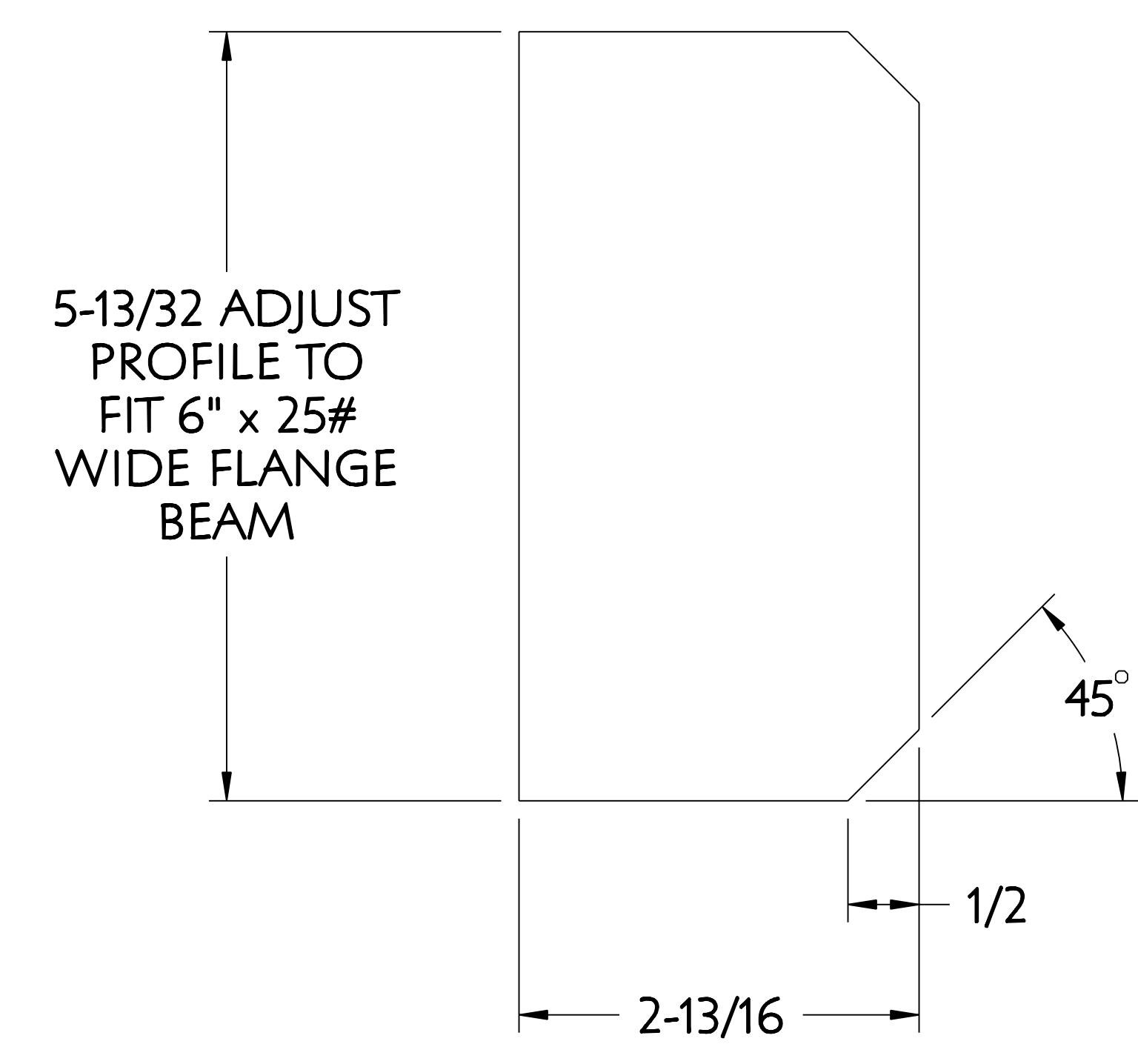
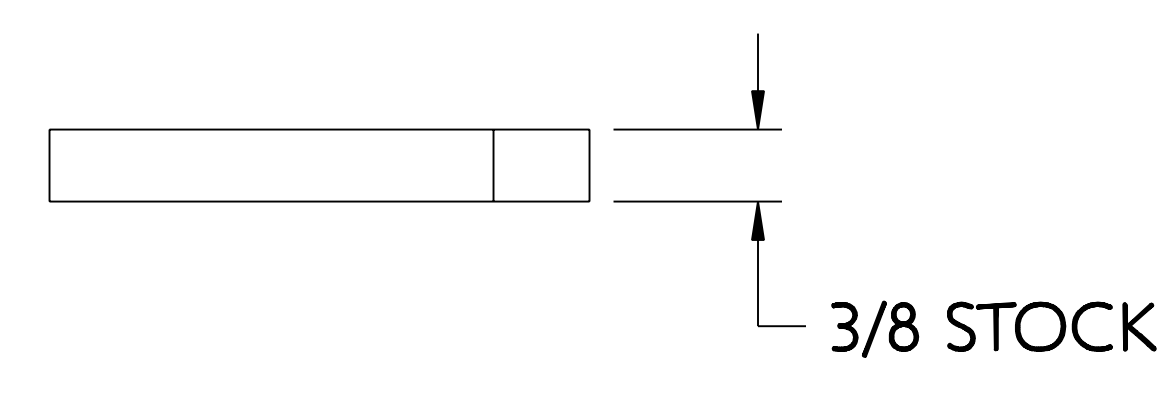
3  
**FLOOR BOLTING CLIP**  
**MAKE FROM 3" X 2 1/2" ANGLE**



4  
**CLAMPING THREADED BOSS**  
**MAKE FROM 1 1/4 Ø STK**



5  
**STOP BLOCK**  
**MAKE FROM 3 x 6 x 1" BAR**



6  
**SUPPORT GUSSET**

**RELEASED FOR FABRICATION / INSTALLATION**  
 PPPL Drafting

FOR NOTES AND BILL OF MATERIAL SEE SHEET 1

COMPUTER GENERATED DRAWING MANUAL CHANGES NOT PERMITTED Pro E	CENTRAL FILES: UNLESS OTHERWISE SPECIFIED	PRINCETON PLASMA PHYSICS LABORATORY NATIONAL COMPACT STELLARATOR EXPERIMENT	
DO NOT VERIFY INFORMATION BY SCALING DRAWING	DIMENSIONS ARE IN INCHES MACHINE SURFACES UNLESS OTHERWISE SPECIFIED	STELLARATOR CORE TOOLING DESIGN AND FABRICATION MCWF SUPPORT CART MISCELLANEOUS DETAILS	
WEIGHT 0.4 lbs	TOLERANCES NON-CUMULATIVE	DSN: J. RUSHINSKI 8-2-2007	DRAWING NO:
MODEL NAME SE186-331-1	DECIMAL-INCH FRACTIONS	CHK: M. COLE 8-2-2007	<b>SE186-331</b>
RELEASE LEVEL: Fabrication DWG VERSION NO: 4	NEXT ASSEMBLY	ENGR: T. BROWN 8-2-2007	SHEET 2 OF 2
WELDING ENGINEER	ANGULAR: ±0°-15° OVER: 120°-112°	SUPV: J. SIEGEL 8-2-2007	REV 0.9

NCSX-SE186-331