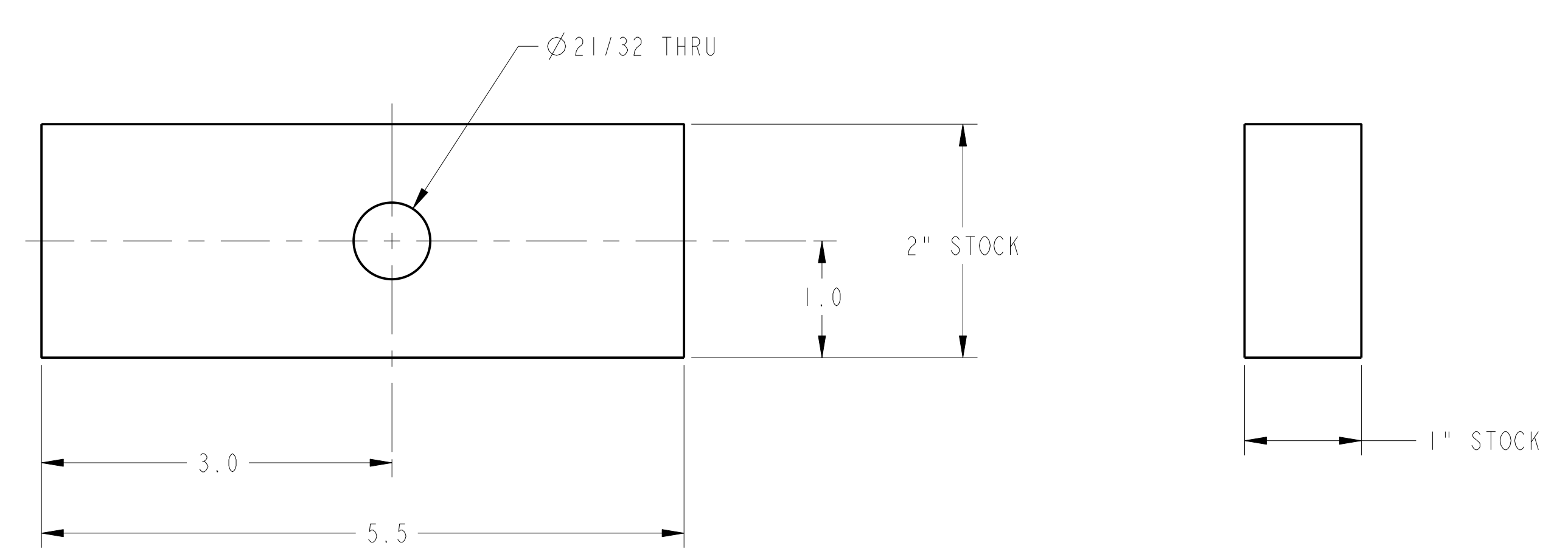
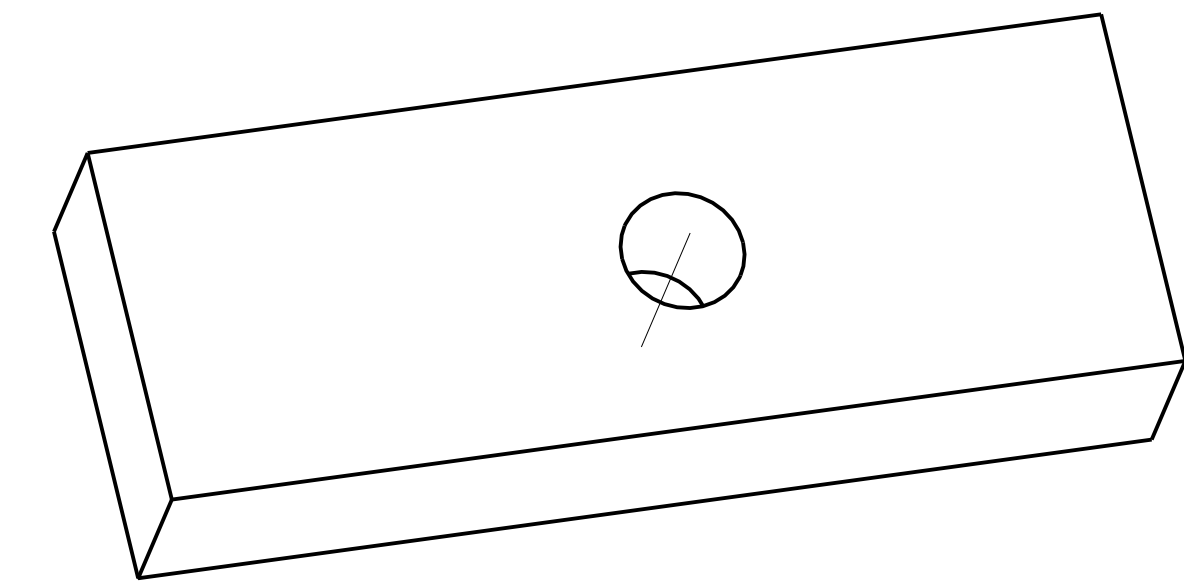
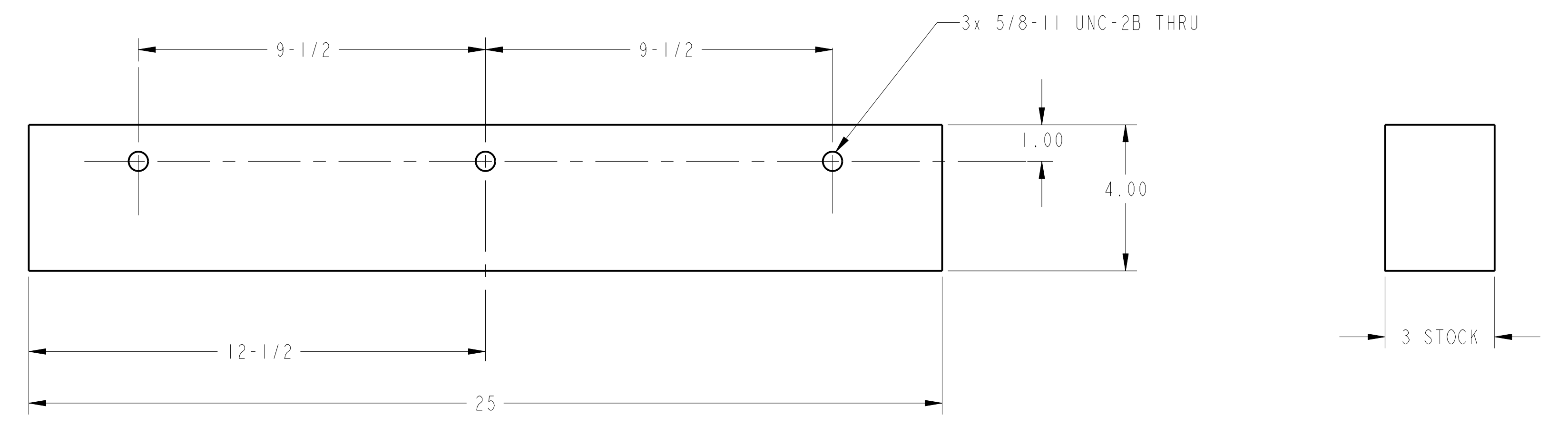
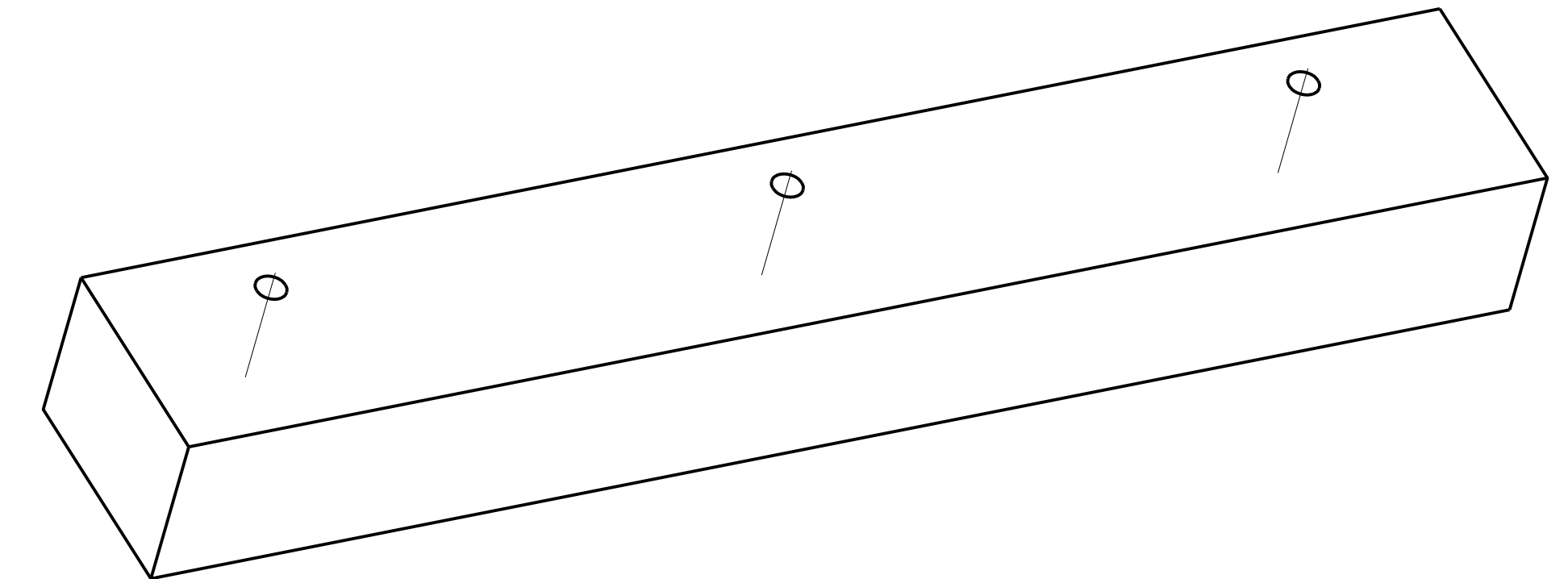


|     |          |    |    |     |          |      |
|-----|----------|----|----|-----|----------|------|
| NO. | REVISION | BY | CH | SUP | APPROVED | DATE |
|     |          |    |    |     |          |      |



CLAMP BLOCK  
SE186-354-1  
MATERIAL: ASTM A36  
WEIGHT: 3.1 LBS.



CLAMP STOP  
SE186-354-2  
MATERIAL: ASTM A36  
WEIGHT: 8.7 LBS.

**RELEASED FOR  
FABRICATION/INSTALLATION**  
PPPL Drafting

RELEASE LEVEL: Fabrication  
DWG VERSION NO: 2

|   |  |  |   |
|---|--|--|---|
| COMPUTER GENERATED DRAWING<br>MANUAL CHANGES NOT PERMITTED<br>Pro E | CENTRAL FILES:   | PRINCETON PLASMA PHYSICS LABORATORY<br>PRINCETON UNIVERSITY  |   |
|   | UNLESS OTHERWISE SPECIFIED   | NATIONAL COMPACT STELLARATOR EXPERIMENT  |   |
| DO NOT VERIFY INFORMATION BY SCALING DRAWING                        | DIMENSIONS ARE IN INCHES<br>MACHINE SURFACES<br>BREAK SHARP EDGES .005/.020  | TOOLING DESIGN AND FABRICATION<br>FIELD PERIOD ASSEMBLY FIXTURE<br>COMPONENT DETAILS                           |   |
| NEXT ASSEMBLY   | TOLERANCES NON-CUMULATIVE<br>DECIMAL-INCH FRACTIONS<br>.X ±.000 0°-12° ±.000<br>.XX ±.000 12°-72° ±.000<br>.XXX ±.005 72°-120° ±.000<br>ANGULAR ±.0°-15° OVER 120° ±.000 | DSN: R. UPCAVAGE 2/26/2008<br>CHK: M. VIOLA 2/26/2008<br>ENGR: B. SANDS 2/26/2008<br>SUPV: J. SIEGEL 2/26/2008 | DRAWING NO:<br><b>SE186-354</b><br>SHEET 1 OF 1 REV 0.5 |

NCSX-SE186-354