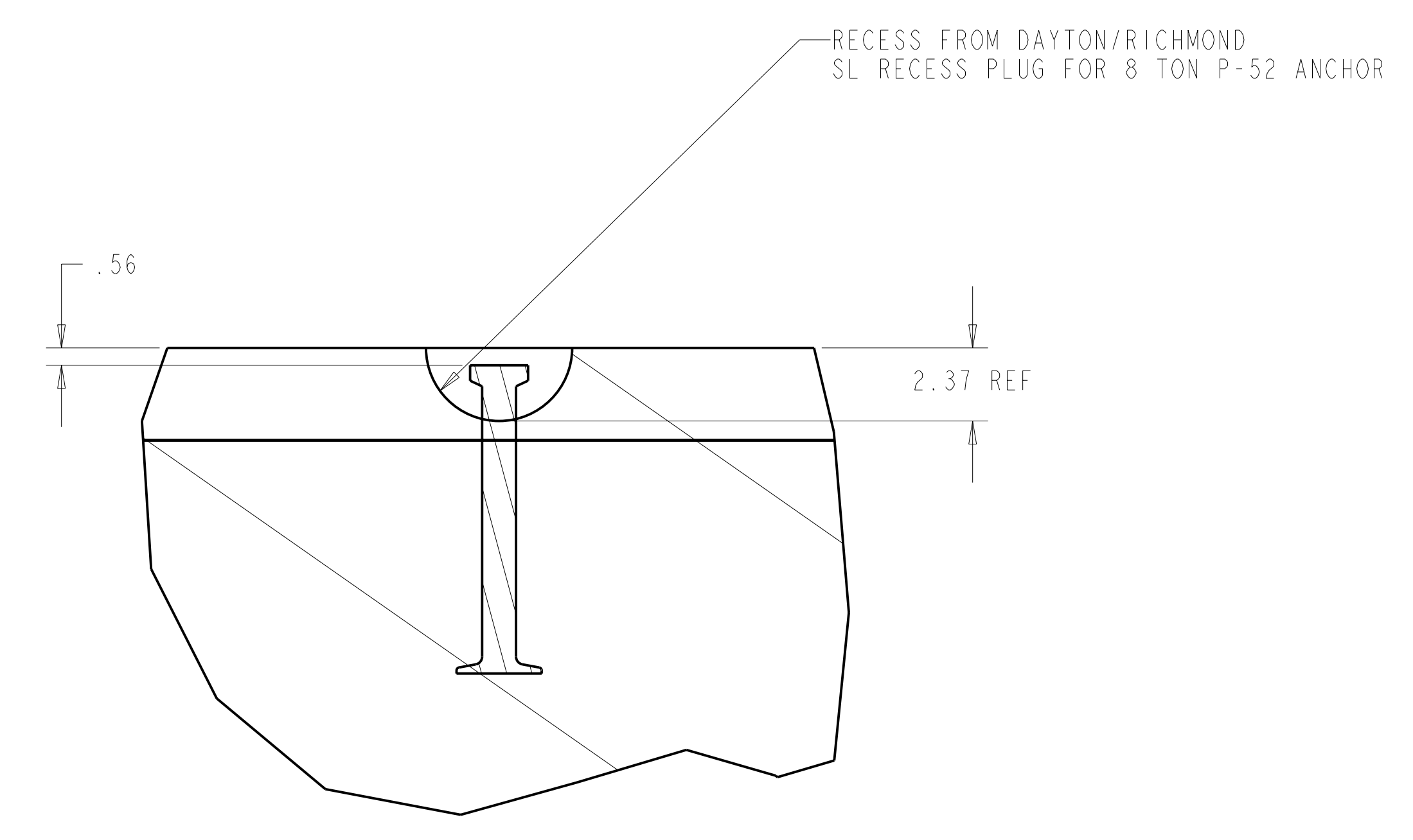
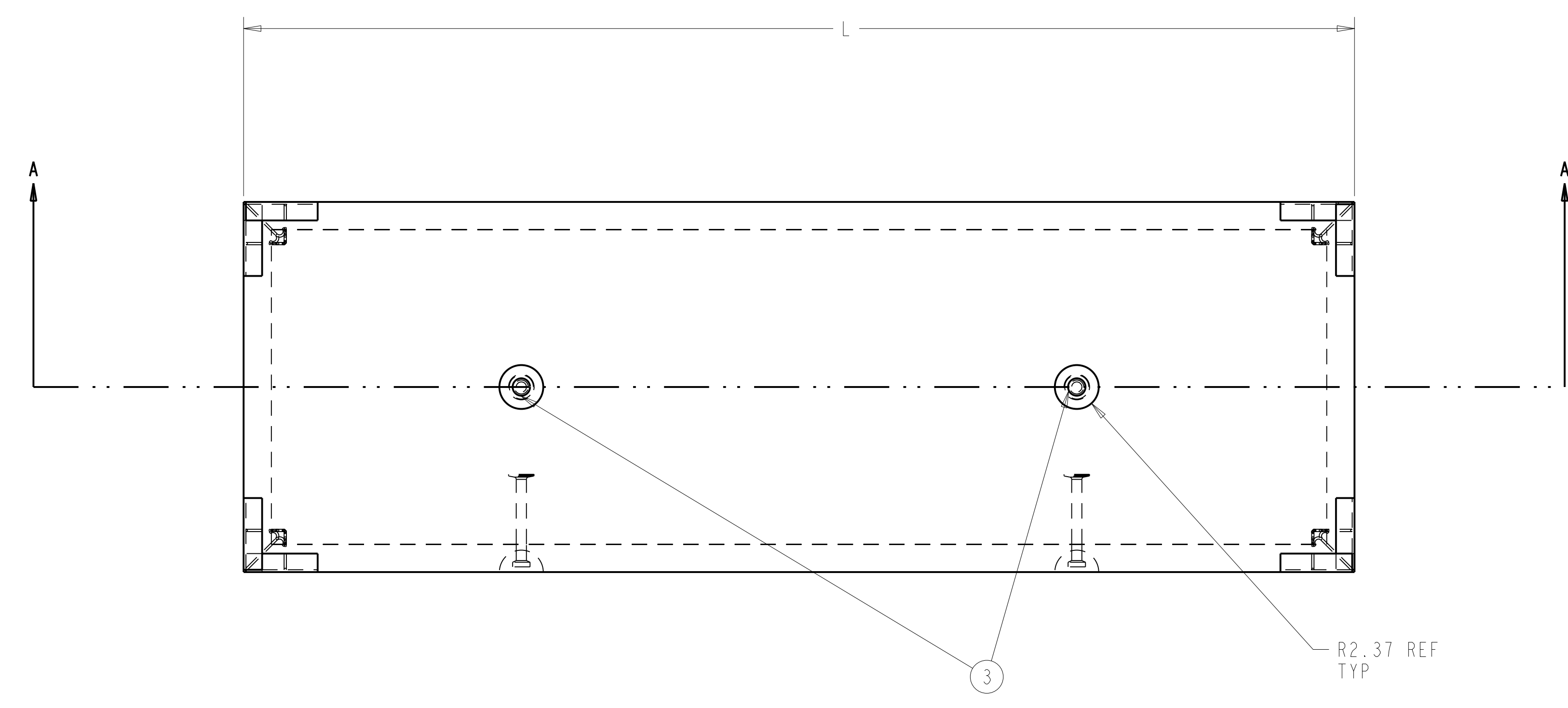
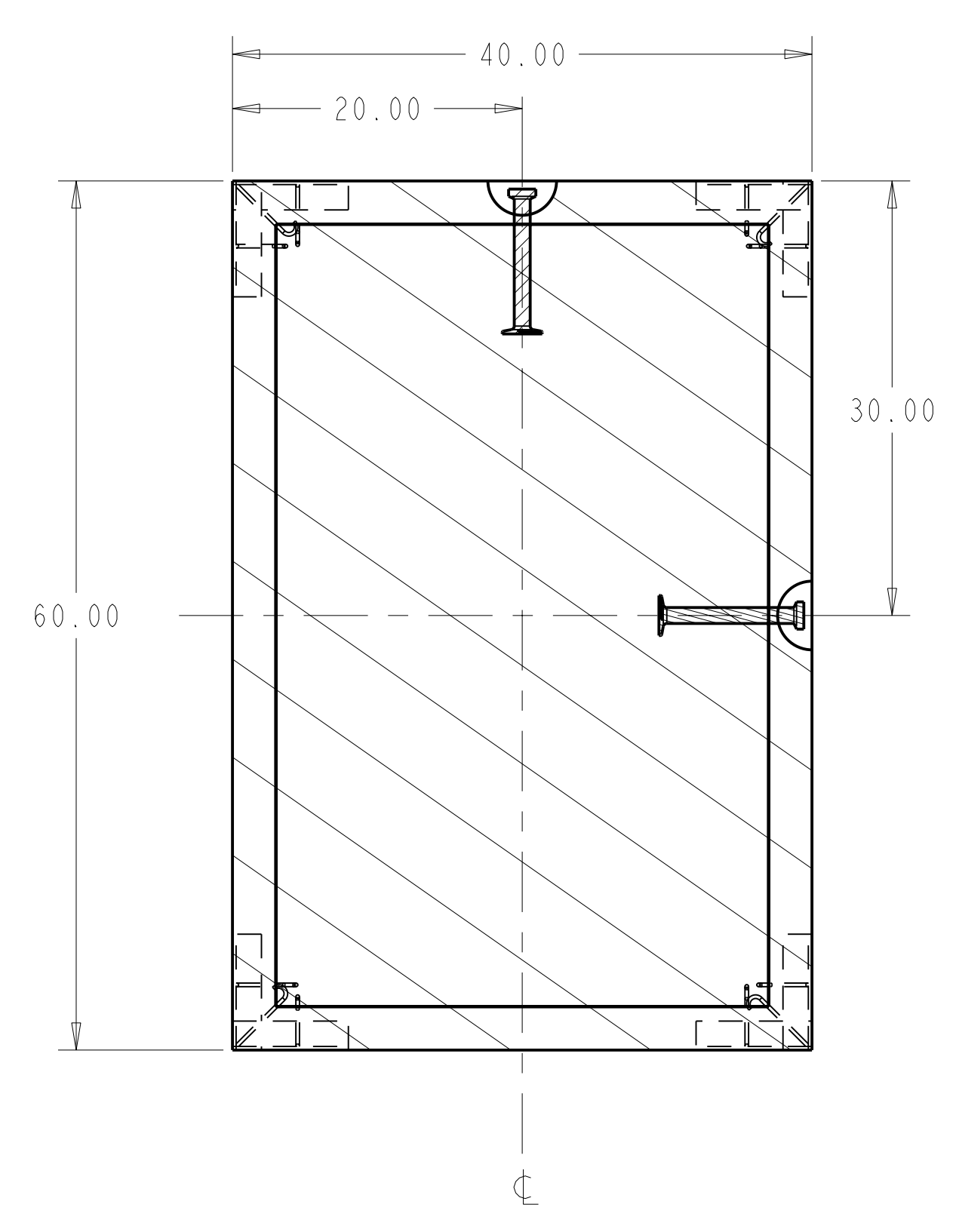


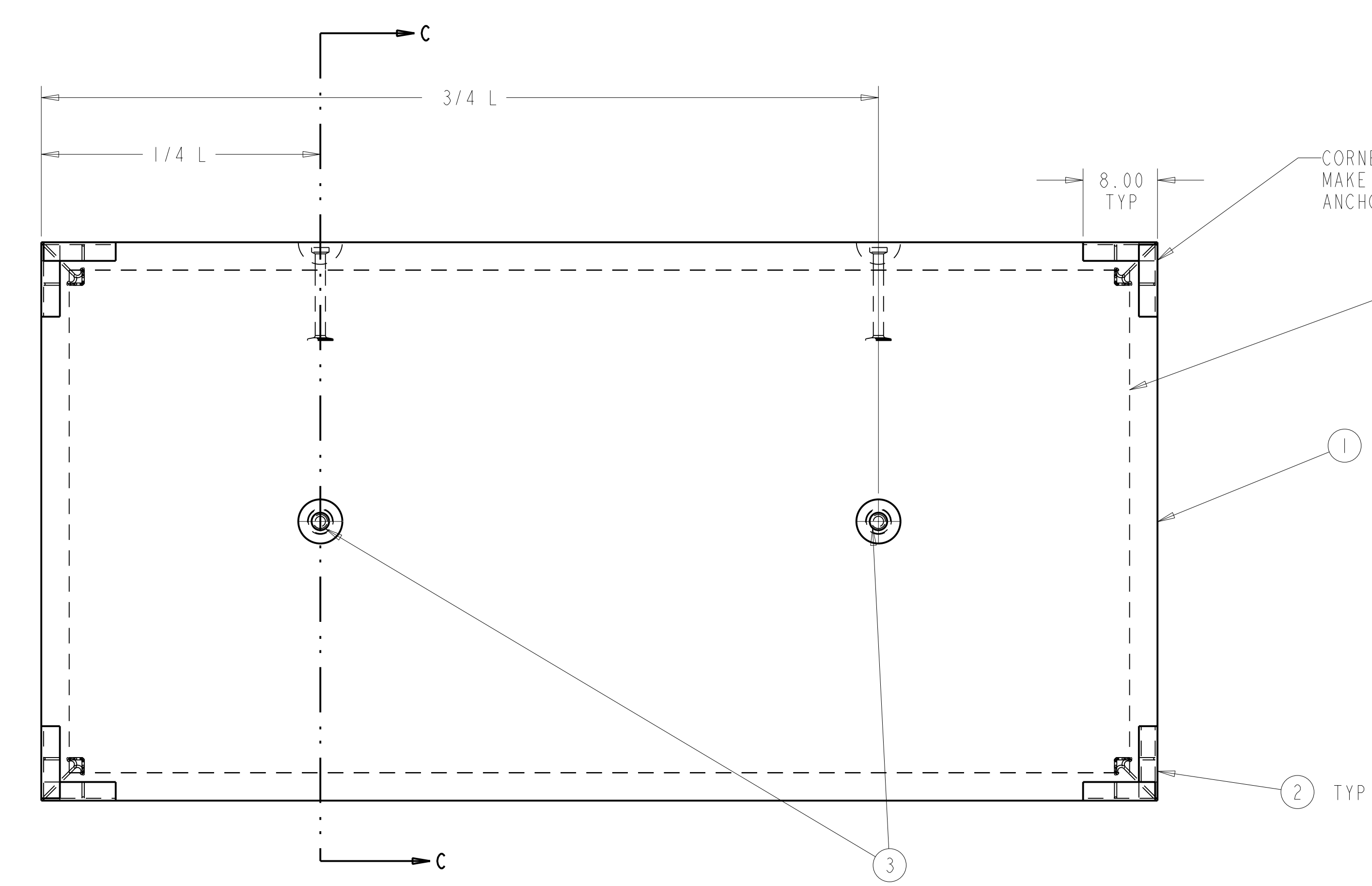
NO.	REVISION	BY	CH	SUP	APPROVED	DATE



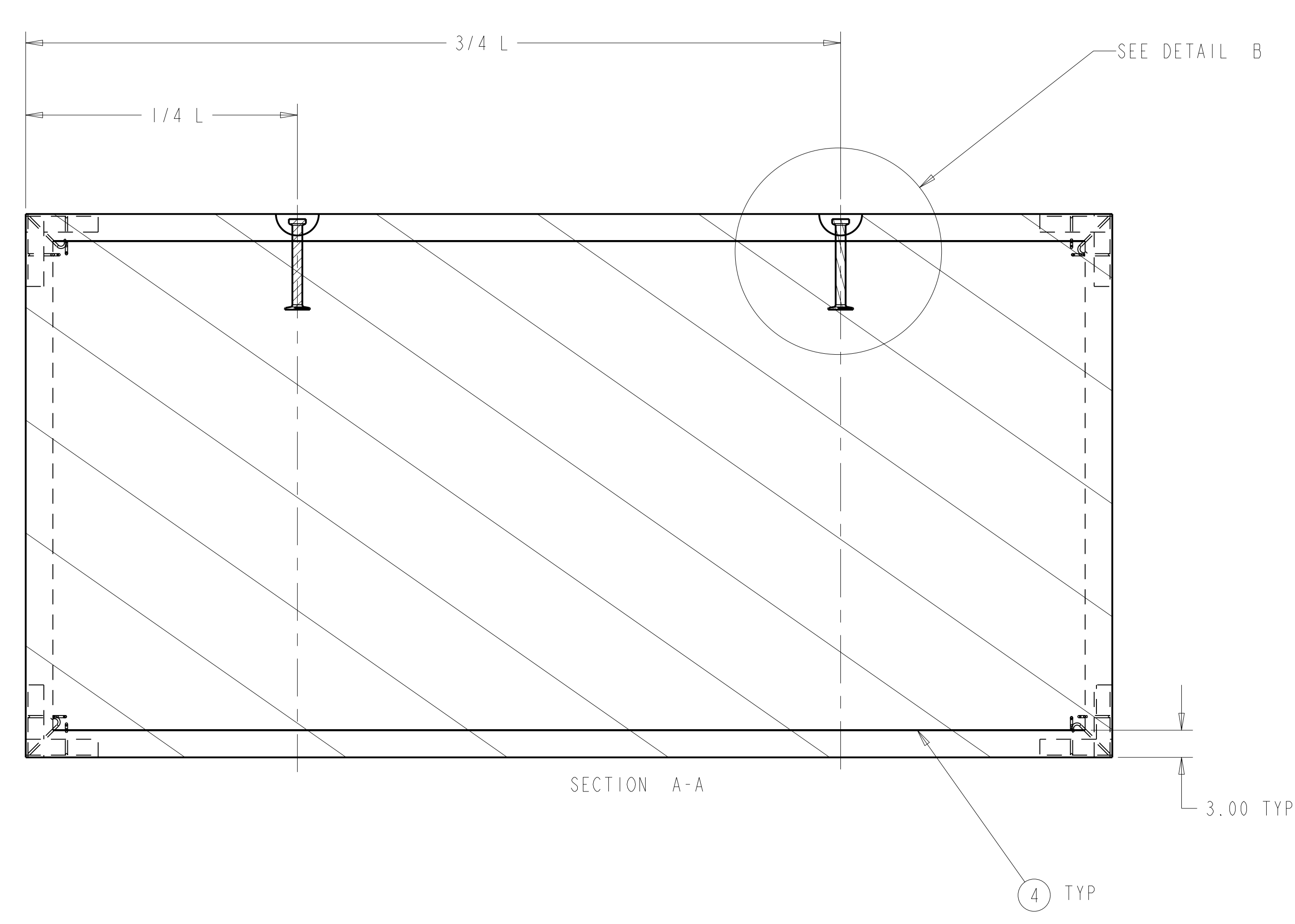
DETAIL B
TYPICAL ANCHOR
SCALE 0.250



SECTION C-C



PART NO.	L DIMEN.	QTY.	EST. WEIGHT
SE710-011-1	120	52	25000
SE710-011-2	92	2	19200
SE710-011-3	73	2	15210
SE710-011-4	52	4	10835
SE710-011-5	72	4	15000
SE710-011-6	82	2	17100



SECTION A-A

NOTES:

1. ALL CONCRETE SHALL BE TYPE II WITH A 28 DAY COMPRESSIVE STRENGTH $f'_c=4000$ PSI AS PER ASTM C150. MAX SLUMP=4".
2. REINFORCEMENT BARS SHALL BE NEW BILLET CONFORMING TO ASTM DESIGNATION A615, GRADE 60, DEFORMED.
3. THE CONCRETE DESIGN IS IN ACCORDANCE WITH "BUILDING CODE REQUIREMENTS FOR REINFORCED CONCRETE" (ACI 318).
4. DETAIL FABRICATE AND ERECT REINFORCEMENT BARS, INCLUDING BAR SUPPORTS, SPACERS, ETC. IN ACCORDANCE WITH CRSI'S "MANUAL OF STANDARD PRACTICE".

**RELEASED FOR
FABRICATION / INSTALLATION**
PPPL Drafting:

3	COMMON	WELDED WIRE FABRIC 6"/6" X 10/10	STEEL	4
3	COMMON	DAYTON/RICHMOND P-52 ANCHOR (8 TON 10")	STEEL	VAR
2	COMMON	2"X2"X1/4" ANGLE IRON	STEEL	24
1	THIS DRW	CONCRETE SHIELD WALL BLOCK	--	1

PART NO.	DRAWING NO	NOMENCLATURE OR DESCRIPTION	MATERIAL	QTY REOD
PARTS LIST				
COMPUTER GENERATED DRAWING DRAWING CHANGES NOT PERMITTED Pro E		CENTRAL FILES: UNLESS OTHERWISE SPECIFIED DIMENSIONS ARE IN INCHES MACHINE SURFACES BREAK SHARP EDGES .005/.020	PRINCETON PLASMA PHYSICS LABORATORY PRINCETON UNIVERSITY, TX NATIONAL COMPACT STELLARATOR EXPERIMENT	
DO NOT VERIFY INFORMATION BY SCALING DRAWING SCALE: 0.10		TOLERANCES NON-CUMULATIVE DECIMAL-INCH FRACTIONS: XX +/- .000 0"-12" +/- .010 XXX +/- .005 12"-120" +/- .010 ANGLER +/- .015 OVER 120" +/- .010	DSN: C. PRINISKI 7-26-04 CHK: L. MORRIS 7-26-04 ENGR: R. PARSELLS 7-26-04 SUPV: J. SIEGEL 7-26-04	DRAWING NO: SE710-011 SHEET 1 OF 1

RELEASE LEVEL: Fabrication
DWG VERSION NO.

WELDING ENGINEER