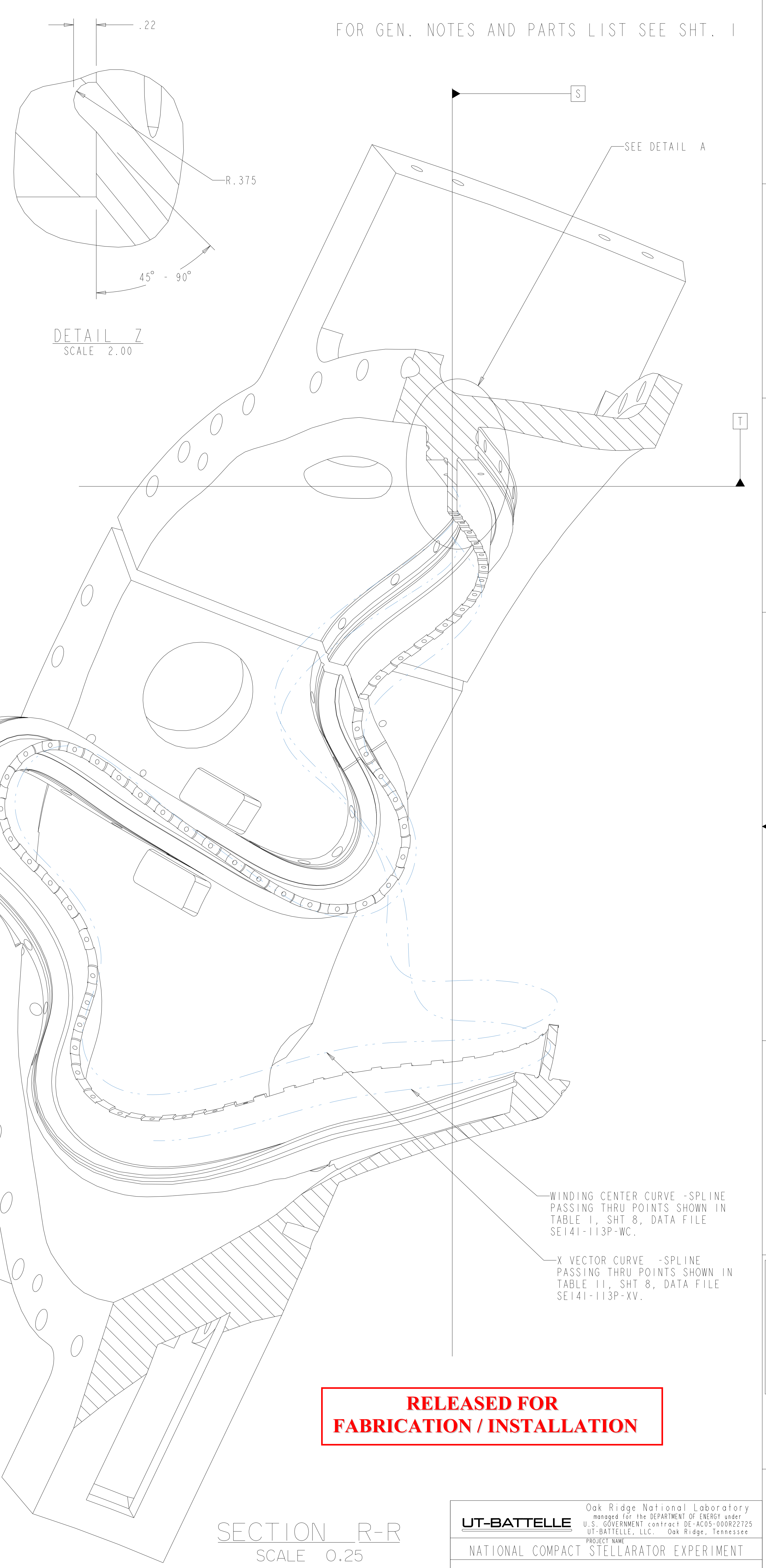
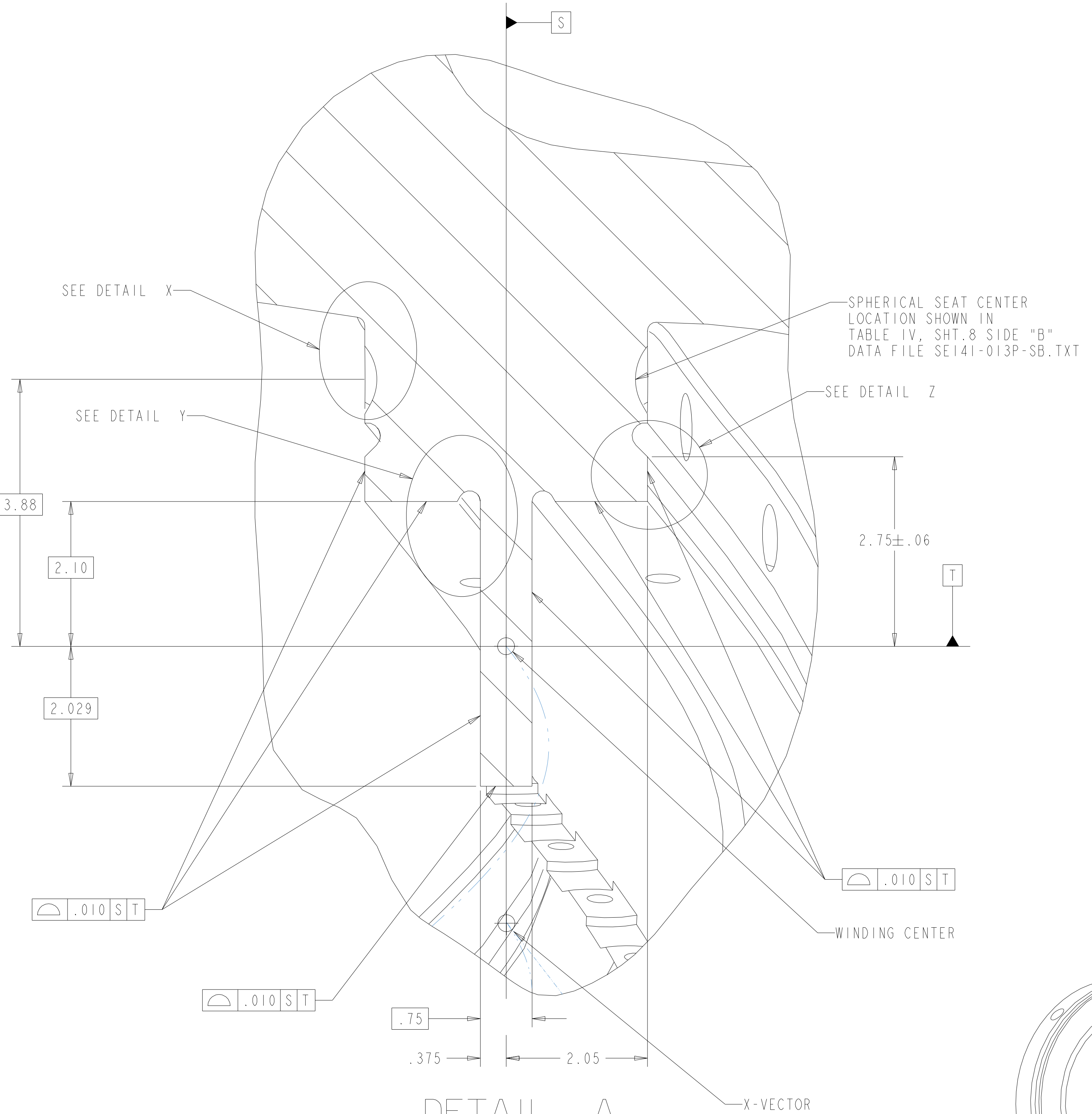
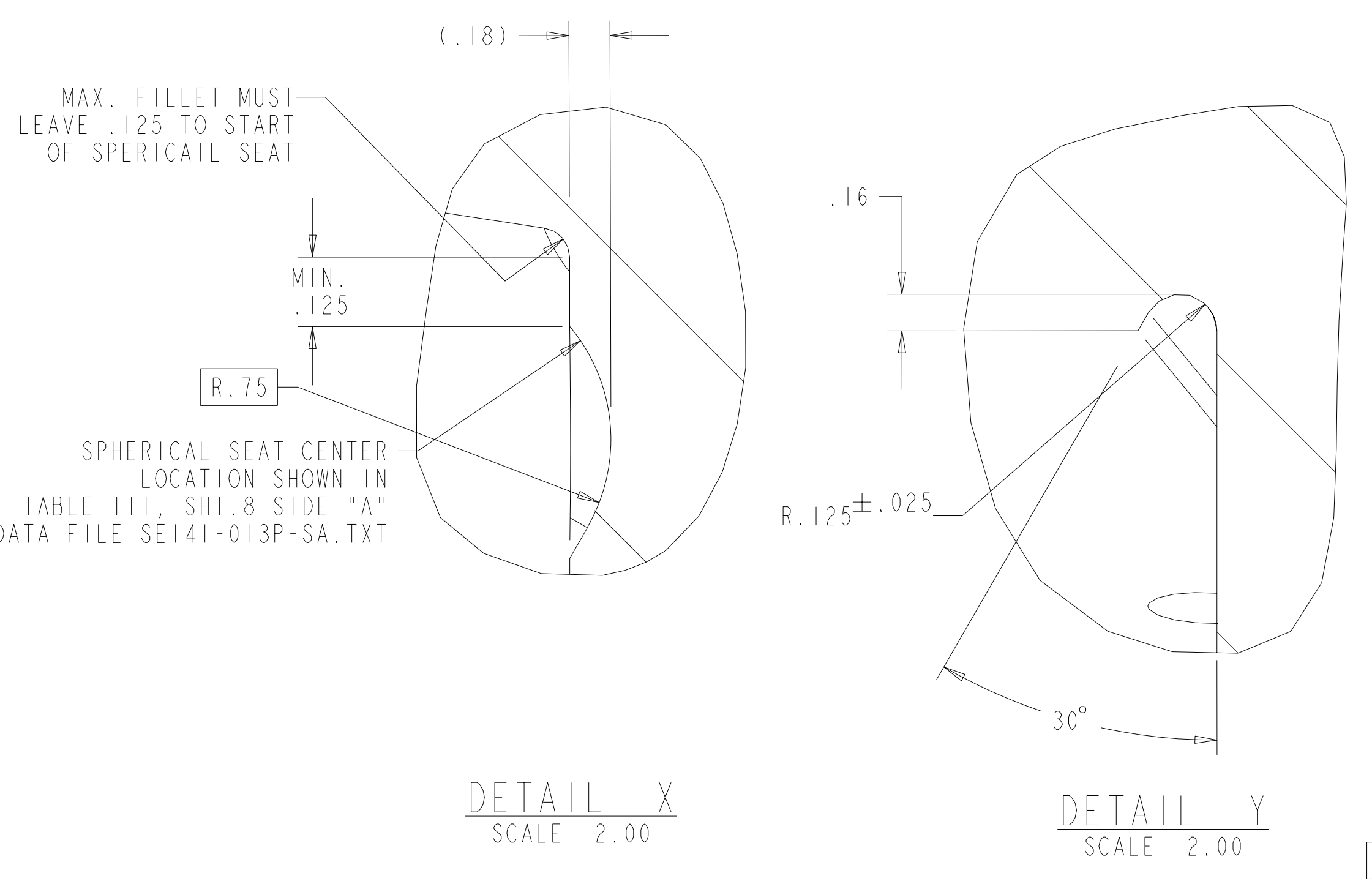
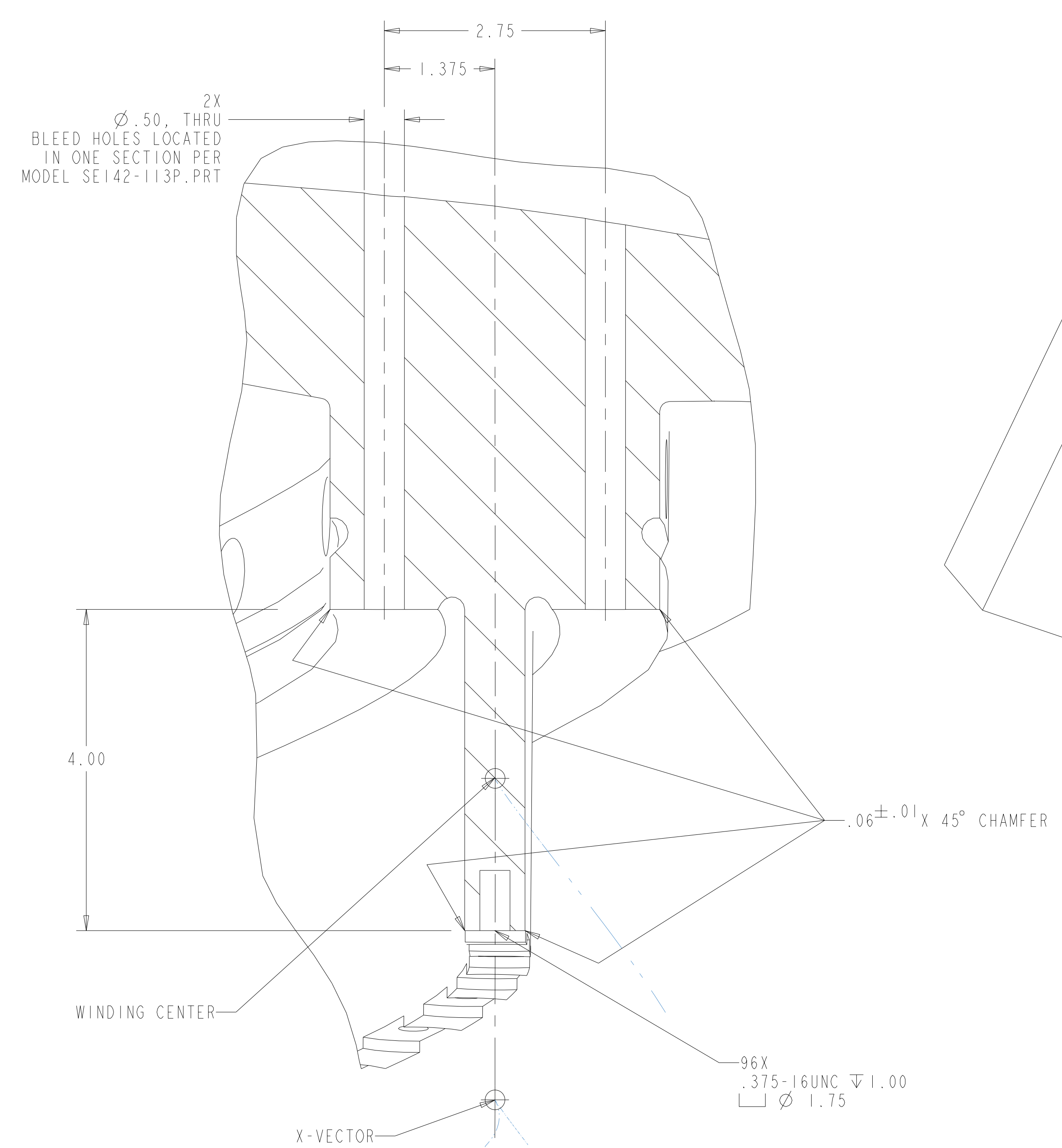
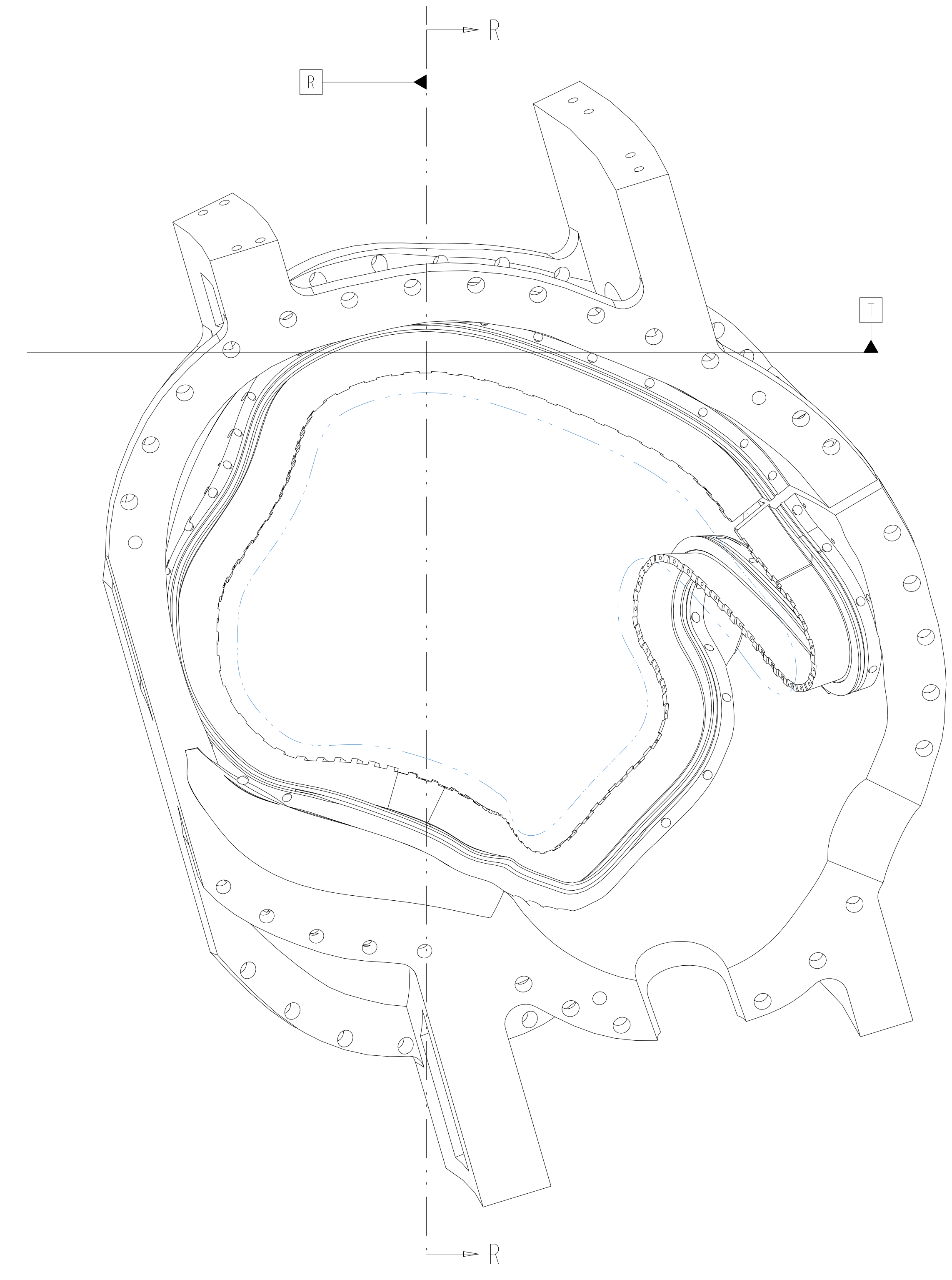


FOR GEN. NOTES AND PARTS LIST SEE SHT. 1



DATUM R = PLAN NORMAL TO WINDING CENTER
 DATUM S = PLAN PASSING THRU WINDING CENTER AND X VECTOR AT DATUM R
 DATUM T = PLAN PASSING THRU WINDING CENTER ORTHOGONAL TO DATUM S
 DETAIL A IS TYPICAL TO ALL POINTS ALONG WINDING CENTER.



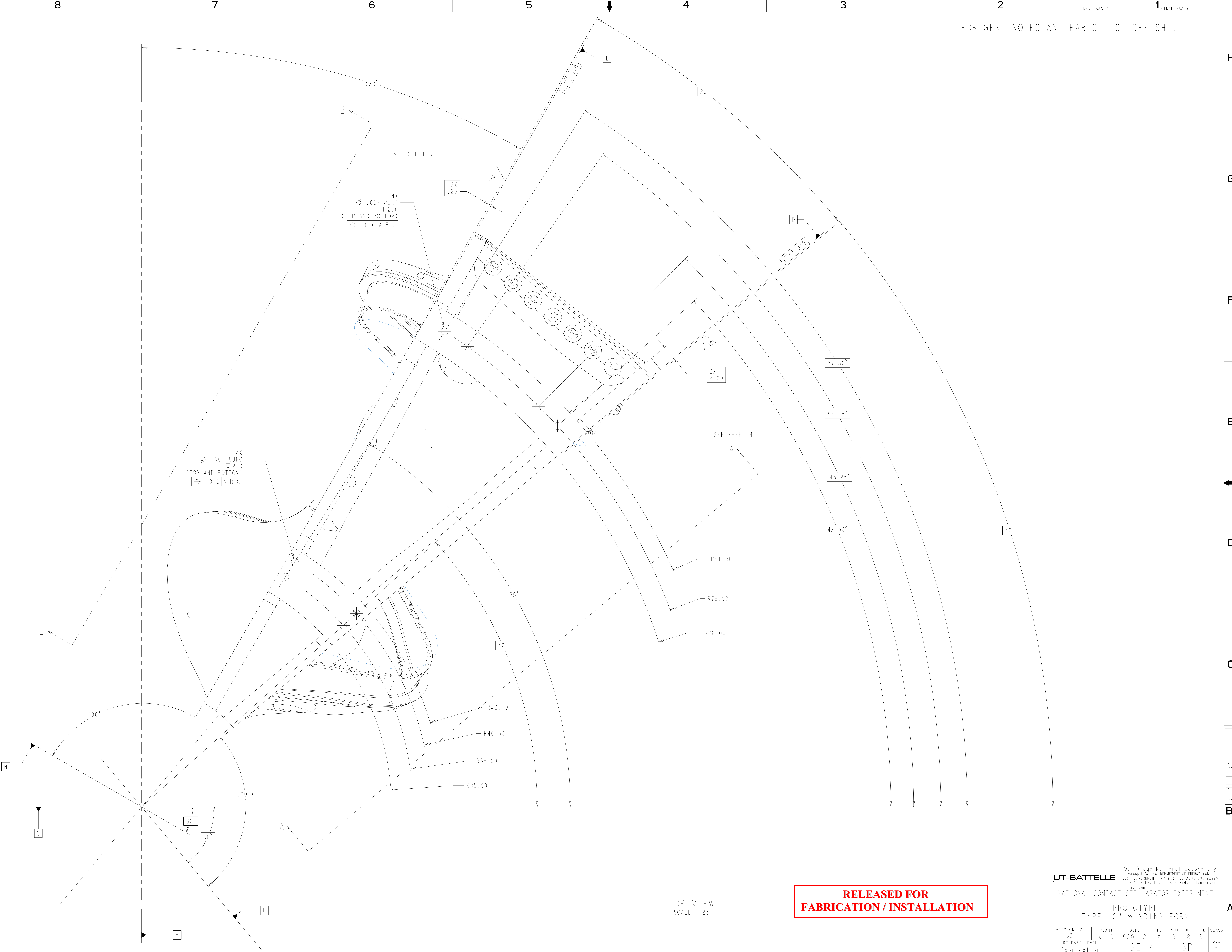
SECTION THRU COUNTERBORE AND TAPPED HOLES
 NORMAL TO WINDING CENTER
 SCALE: 1.00

RELEASED FOR FABRICATION / INSTALLATION

UT-BATTELLE		Oak Ridge National Laboratory managed for the DEPARTMENT OF ENERGY under U.S. GOVERNMENT contract DE-AC05-00OR22725 UT-BATTELLE, LLC, Oak Ridge, Tennessee	
PROJECT NAME NATIONAL COMPACT STELLARATOR EXPERIMENT			
PROTOTYPE TYPE "C" WINDING FORM			
VERSION NO. 33	PLANT X-10	BLDG 9201-2	FL SHT OF TYPE CLASS X 2 8 S U
RELEASE LEVEL Fabrication	SE141-113P		REV 0

H
G
F
E
D
C
B
A

SE141-113P



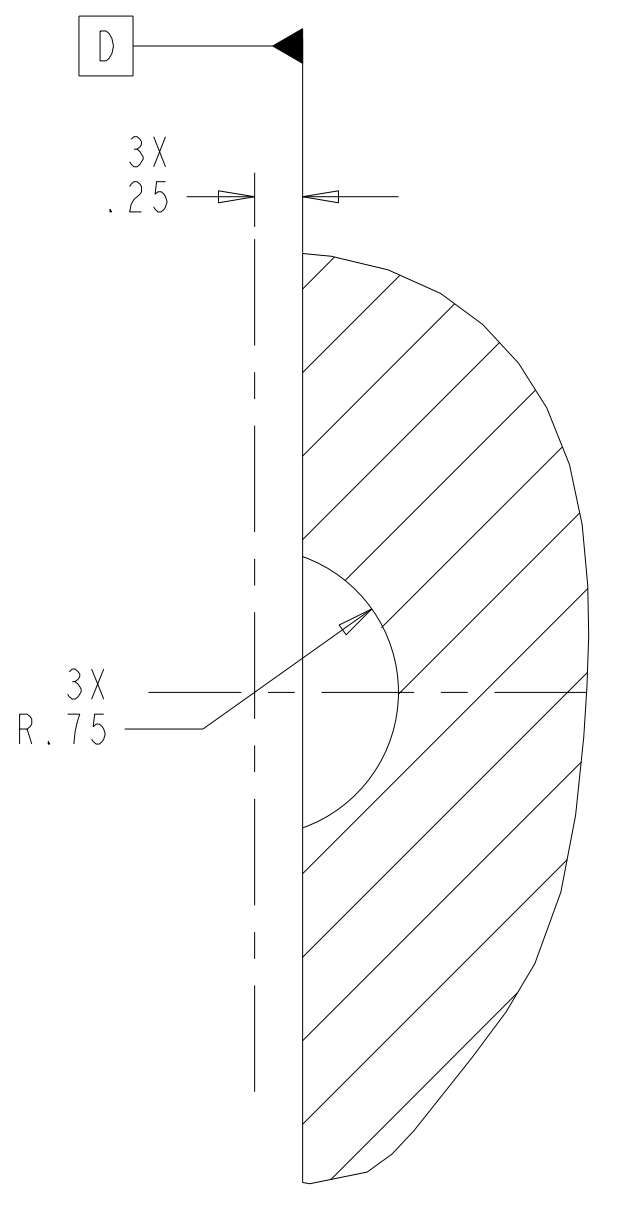
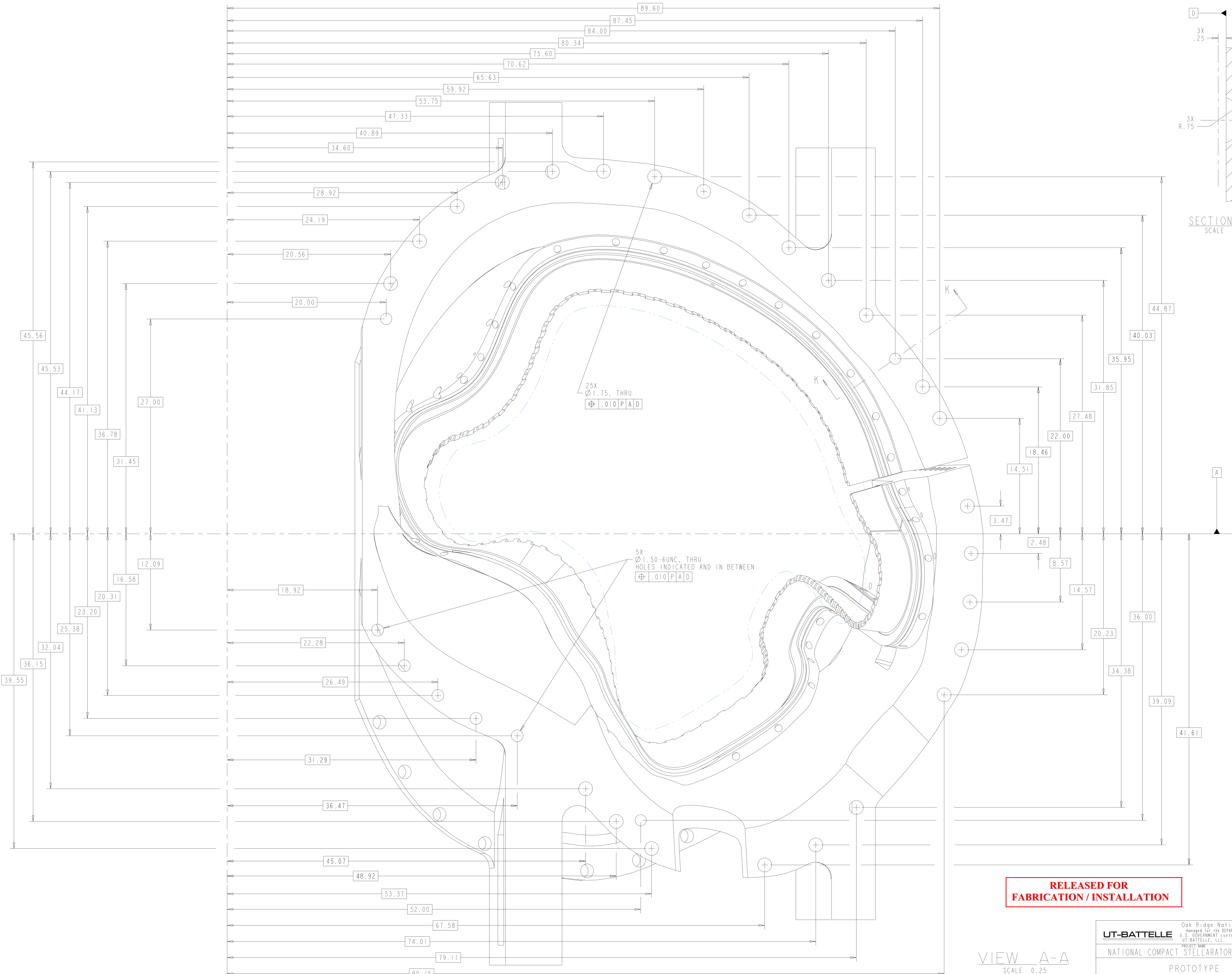
TOP VIEW
SCALE: .25

**RELEASED FOR
FABRICATION / INSTALLATION**

UT-BATTELLE		Oak Ridge National Laboratory managed for the DEPARTMENT OF ENERGY under U.S. GOVERNMENT contract DE-AC05-00OR22725 UT-BATTELLE, LLC, Oak Ridge, Tennessee					
NATIONAL COMPACT STELLARATOR EXPERIMENT		PROJECT NAME					
PROTOTYPE TYPE "C" WINDING FORM		CLASS					
VERSION NO. 33	PLANT X-10	BLDG 9201-2	FL X	SHT OF 3 8	TYPE S	CLASS U	
RELEASE LEVEL Fabrication	SE141-113P					REV 0	

SE141-113P

FOR GEN. NOTES AND PARTS LIST SEE SH. 1



SECTION K-K
 SCALE 1.00

VIEW A-A
 SCALE 0.25

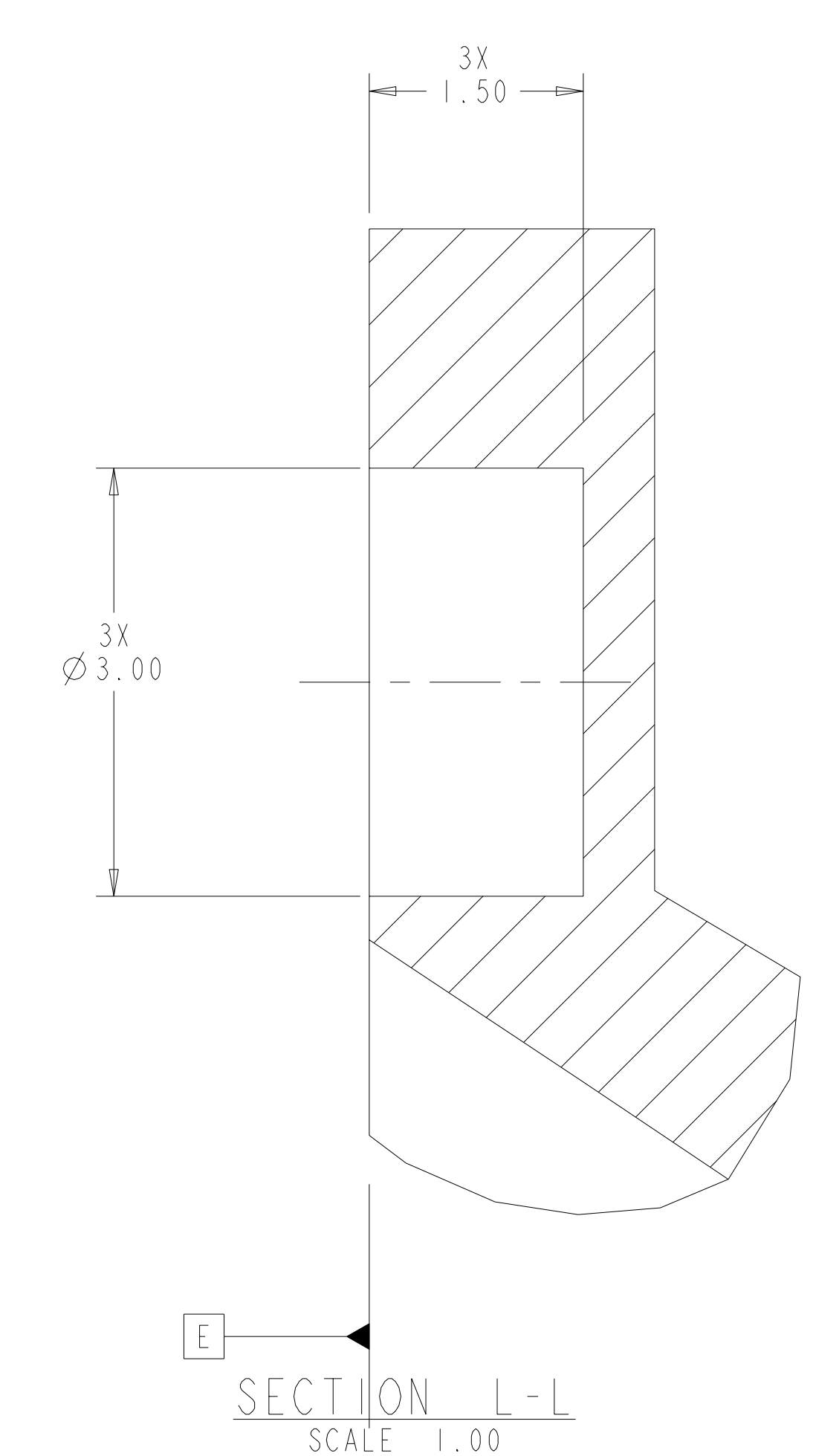
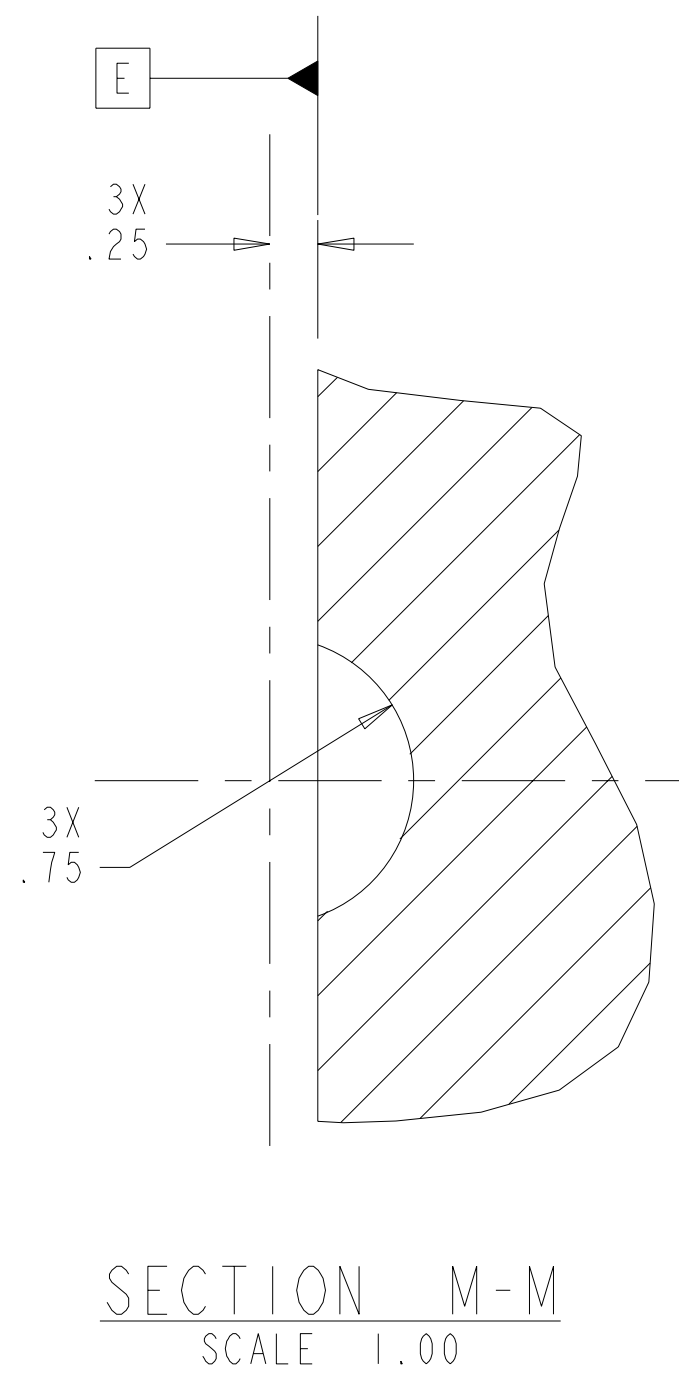
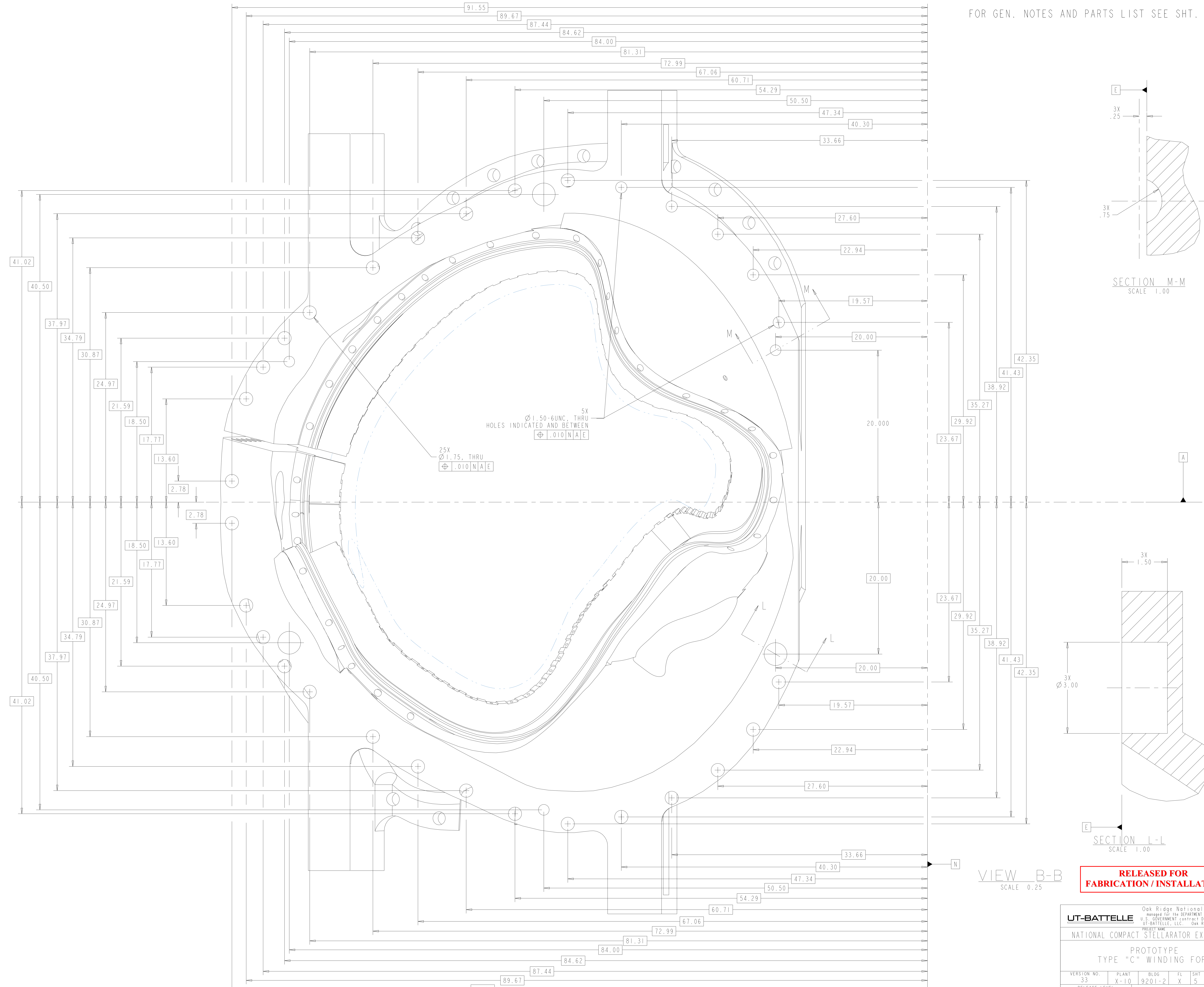
**RELEASED FOR
 FABRICATION / INSTALLATION**

Oak Ridge National Laboratory managed for the DEPARTMENT OF ENERGY under U.S. GOVERNMENT contract DE-AC05-00OR22725 UT-BATTELLE, LLC. Oak Ridge, Tennessee PROJECT NAME							
NATIONAL COMPACT STELLARATOR EXPERIMENT							
PROTOTYPE TYPE "C" WINDING FORM							
VERSION NO.	PLANT	BLDG	FL	SH. OF	TYPE	CLASS	
33	X-10	9201-2	X	4	8	S	U
RELEASE LEVEL		SE141-113P					
Fabrication							

H
G
F
E
D
C
B
A

H
G
F
E
D
C
B
A

FOR GEN. NOTES AND PARTS LIST SEE SH. 1

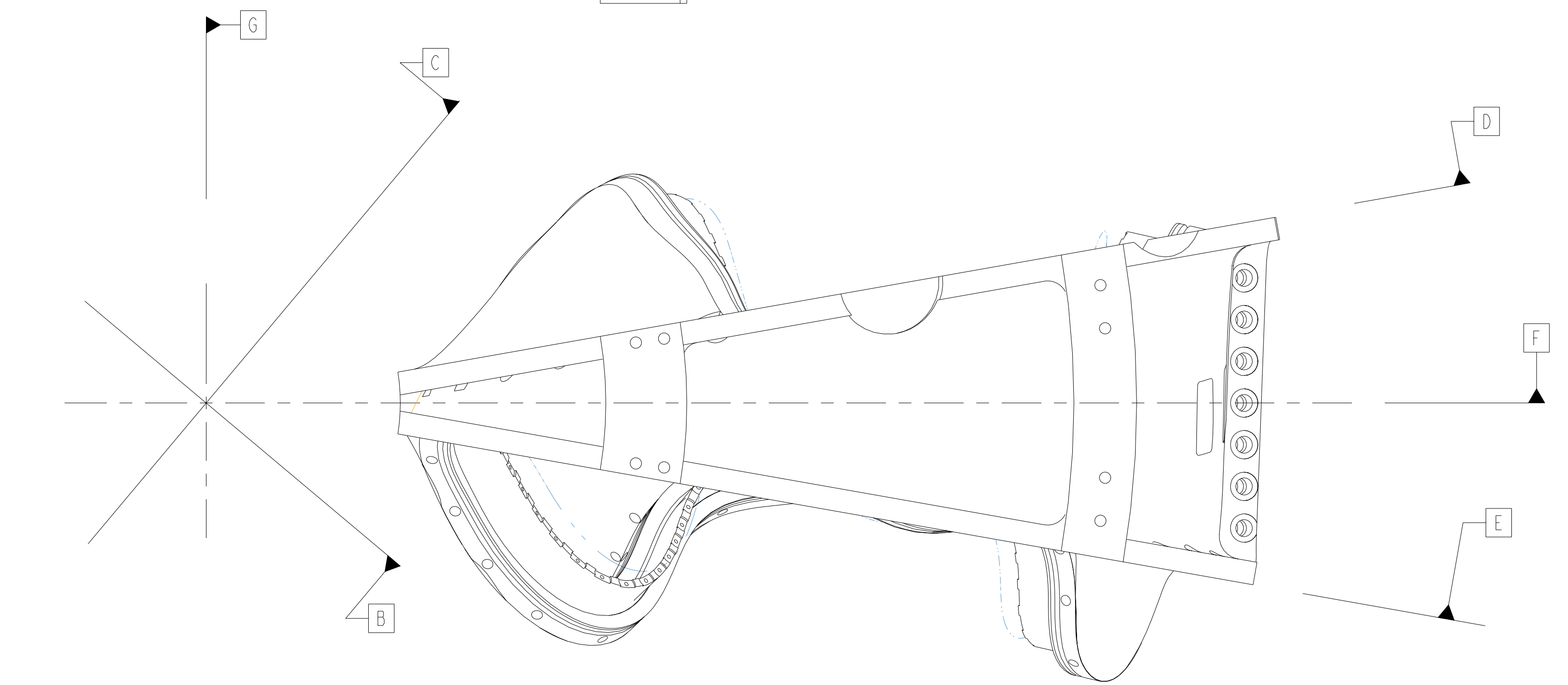
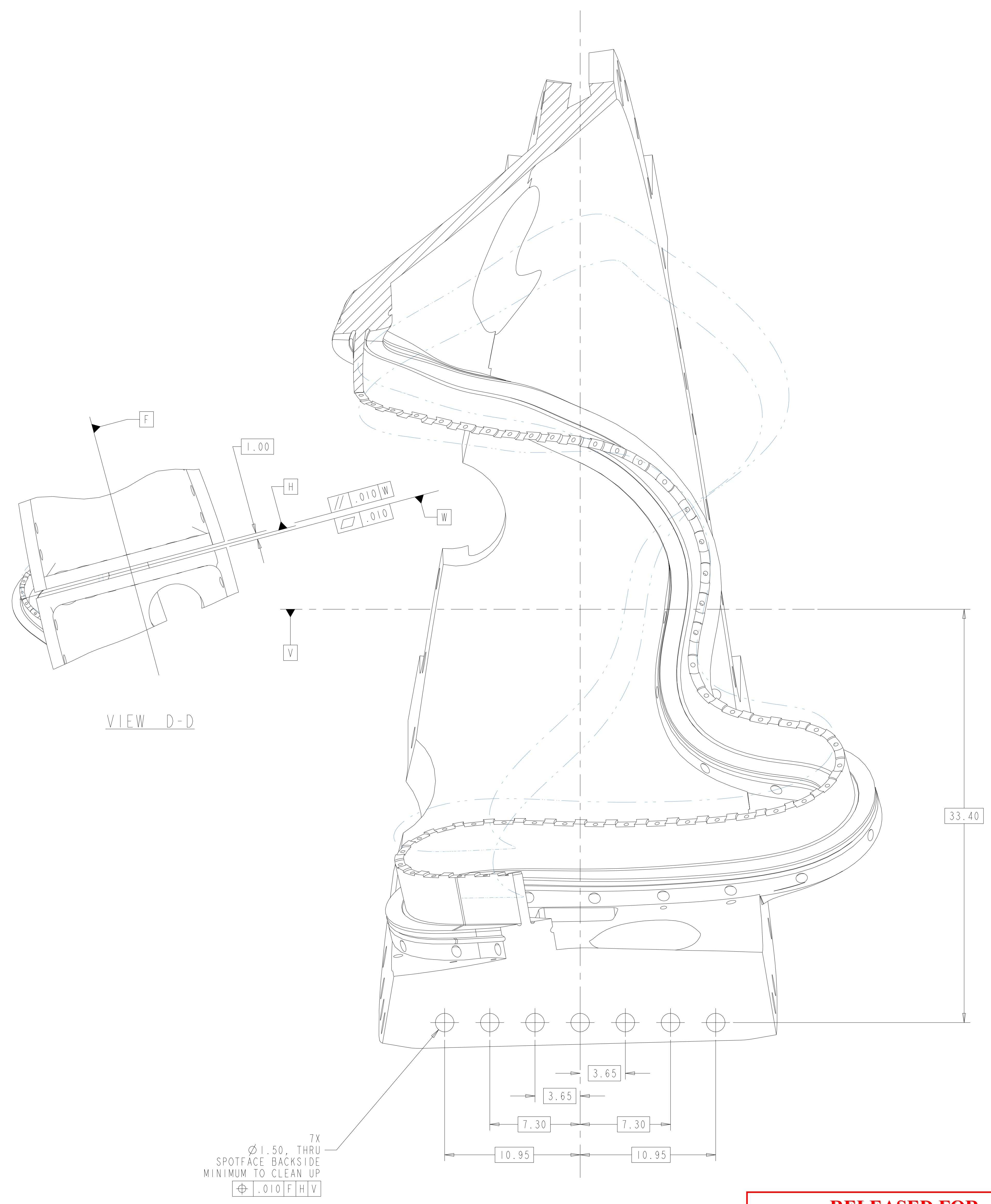
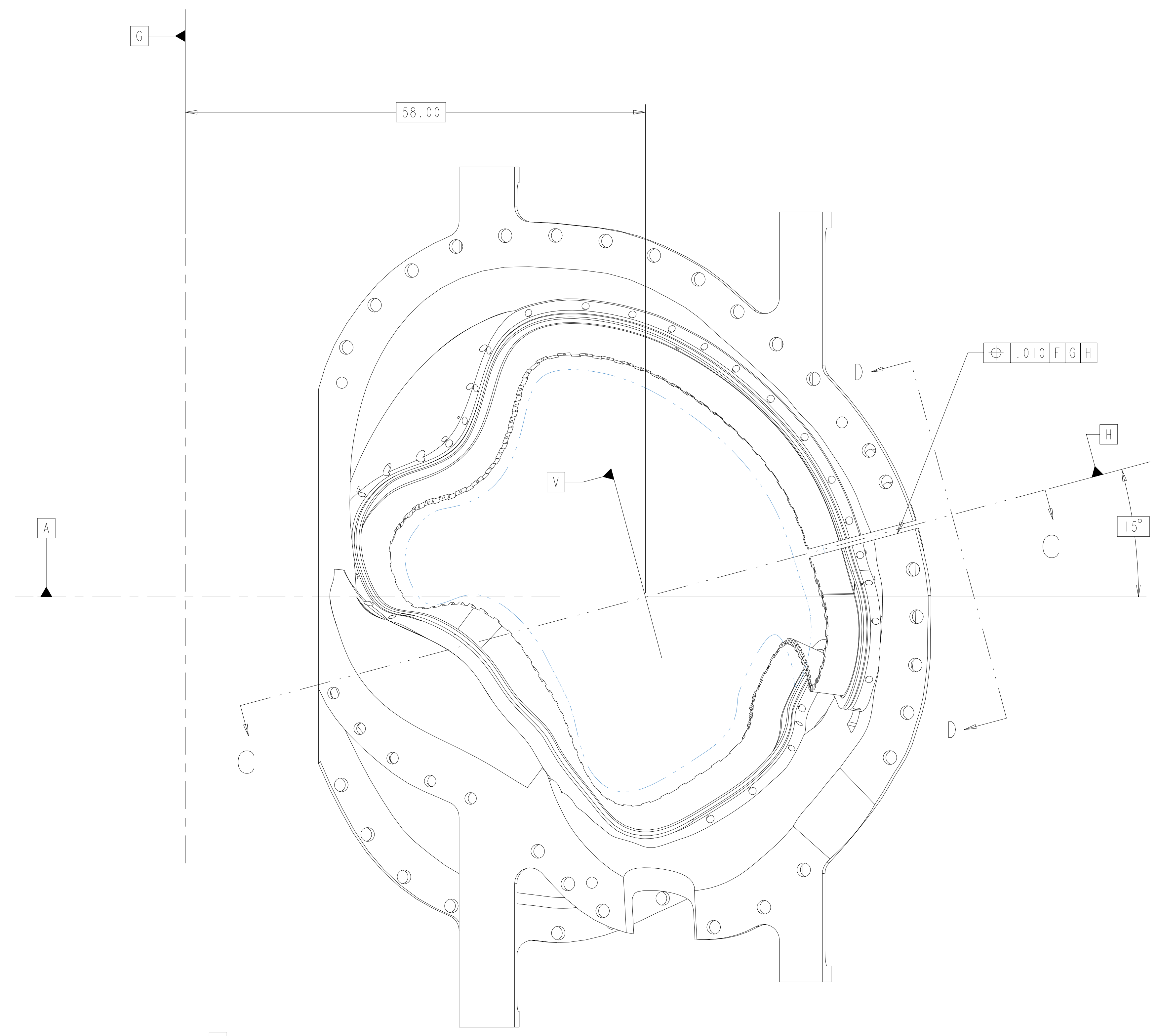
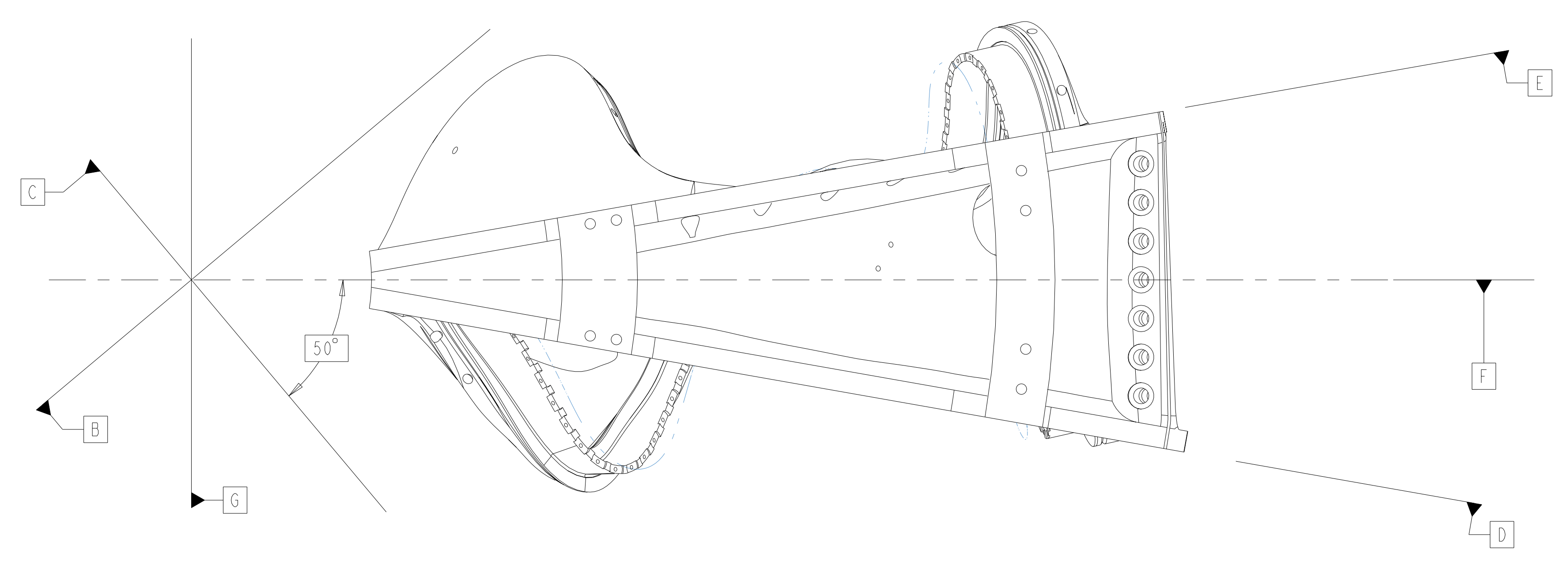


VIEW B-B
 SCALE 0.25

RELEASED FOR FABRICATION / INSTALLATION

Oak Ridge National Laboratory managed for the DEPARTMENT OF ENERGY under U.S. GOVERNMENT contract DE-AC05-00OR22725 UT-BATTELLE, LLC, Oak Ridge, Tennessee PROJECT NAME							
NATIONAL COMPACT STELLARATOR EXPERIMENT							
PROTOTYPE TYPE "C" WINDING FORM							
VERSION NO.	PLANT	BLDG	FL	SH. OF	TYPE	CLASS	
33	X-10	9201-2	X	5	8	S	U
RELEASE LEVEL	SE141-113P						
Fabrication							

FOR GEN. NOTES AND PARTS LIST SEE SHT. 1



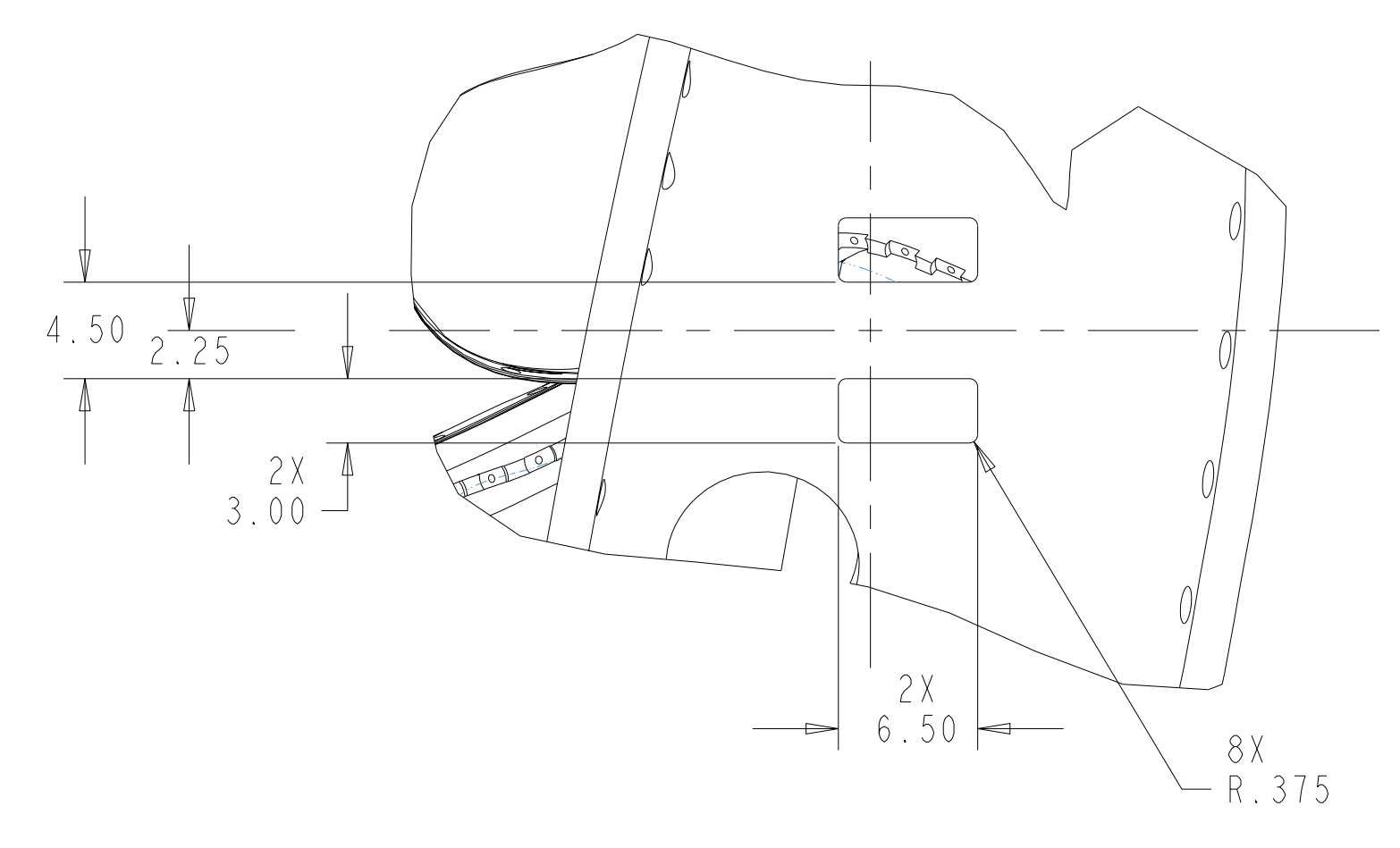
SECTION C-C
 SCALE 0.25

**RELEASED FOR
 FABRICATION / INSTALLATION**

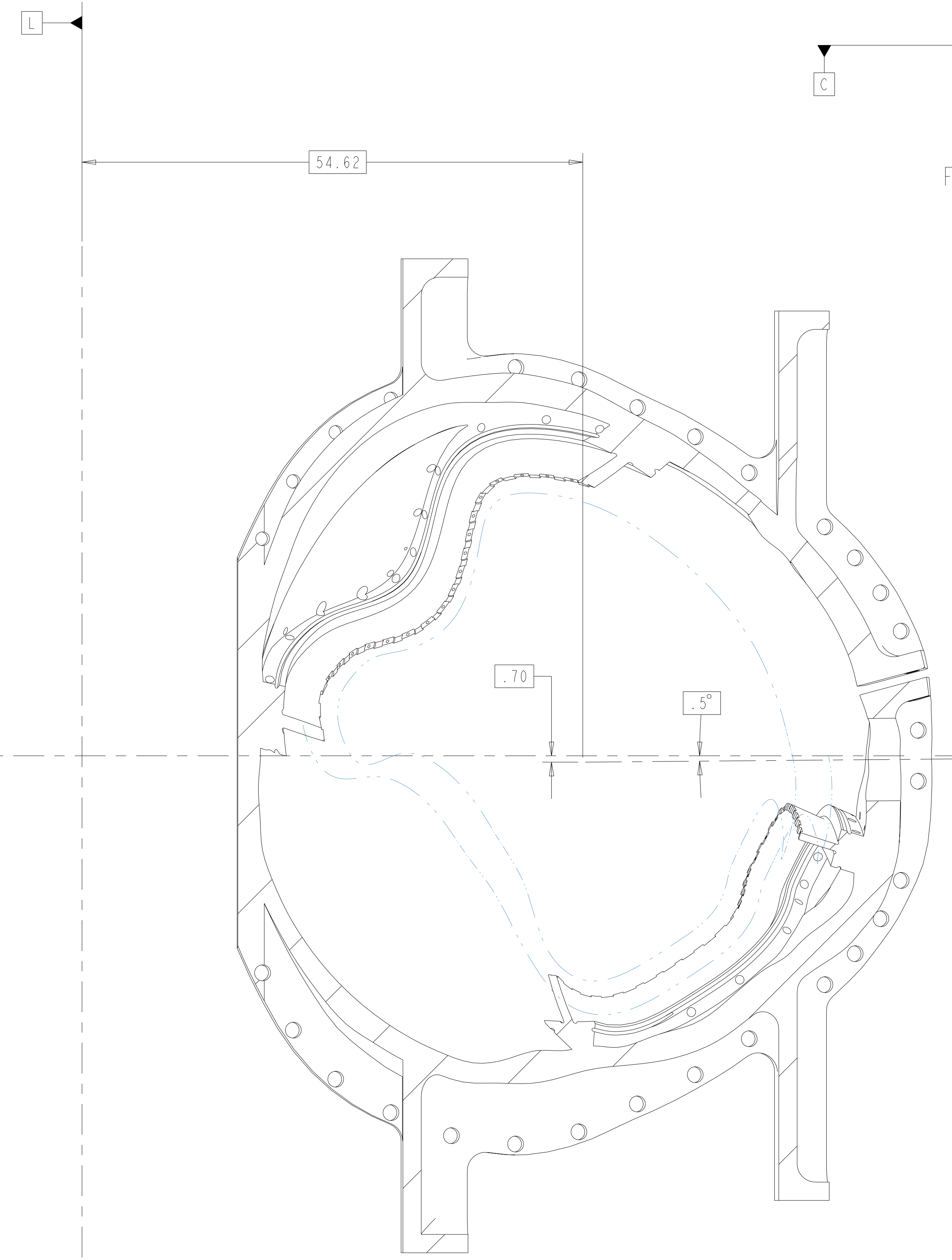
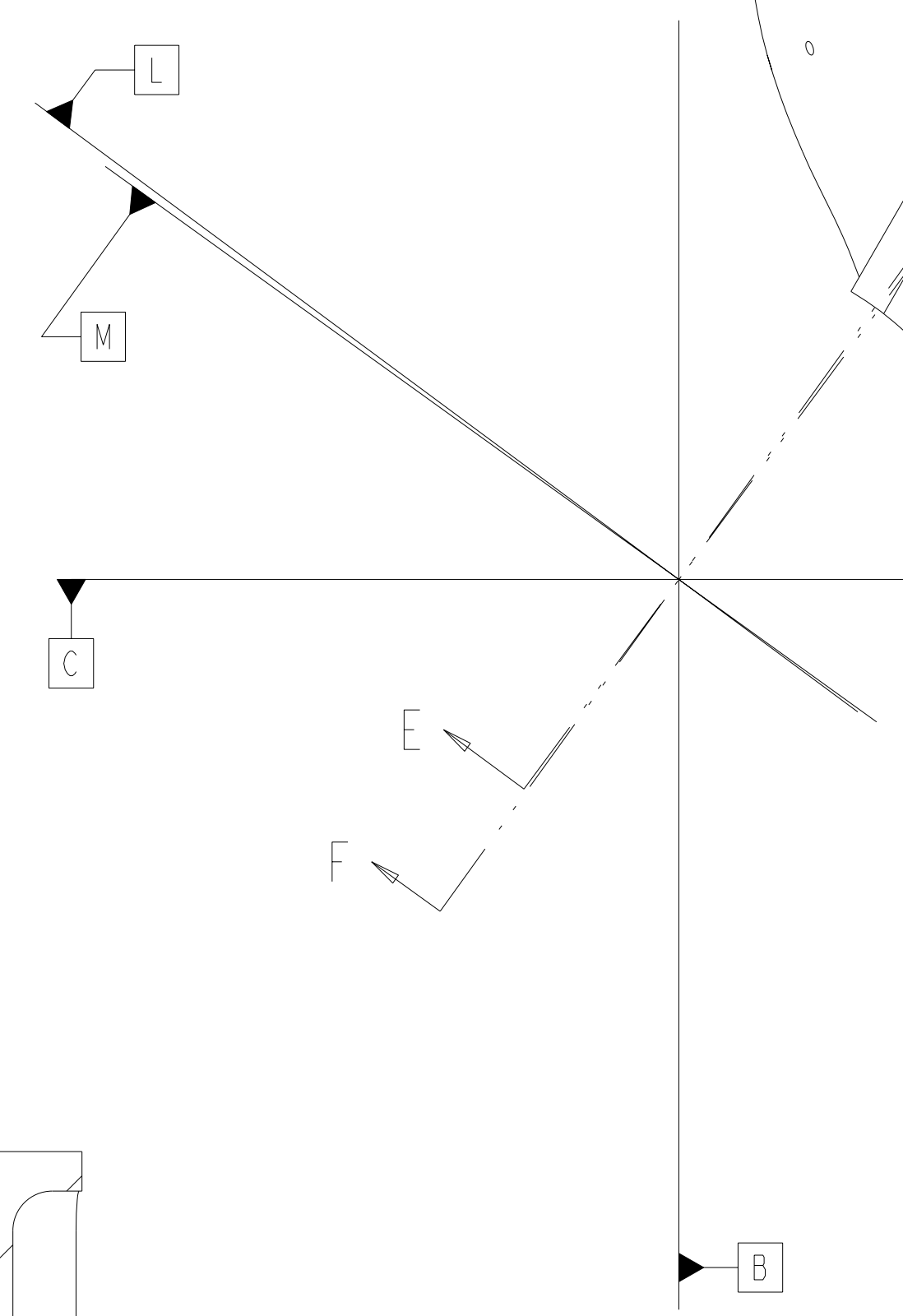
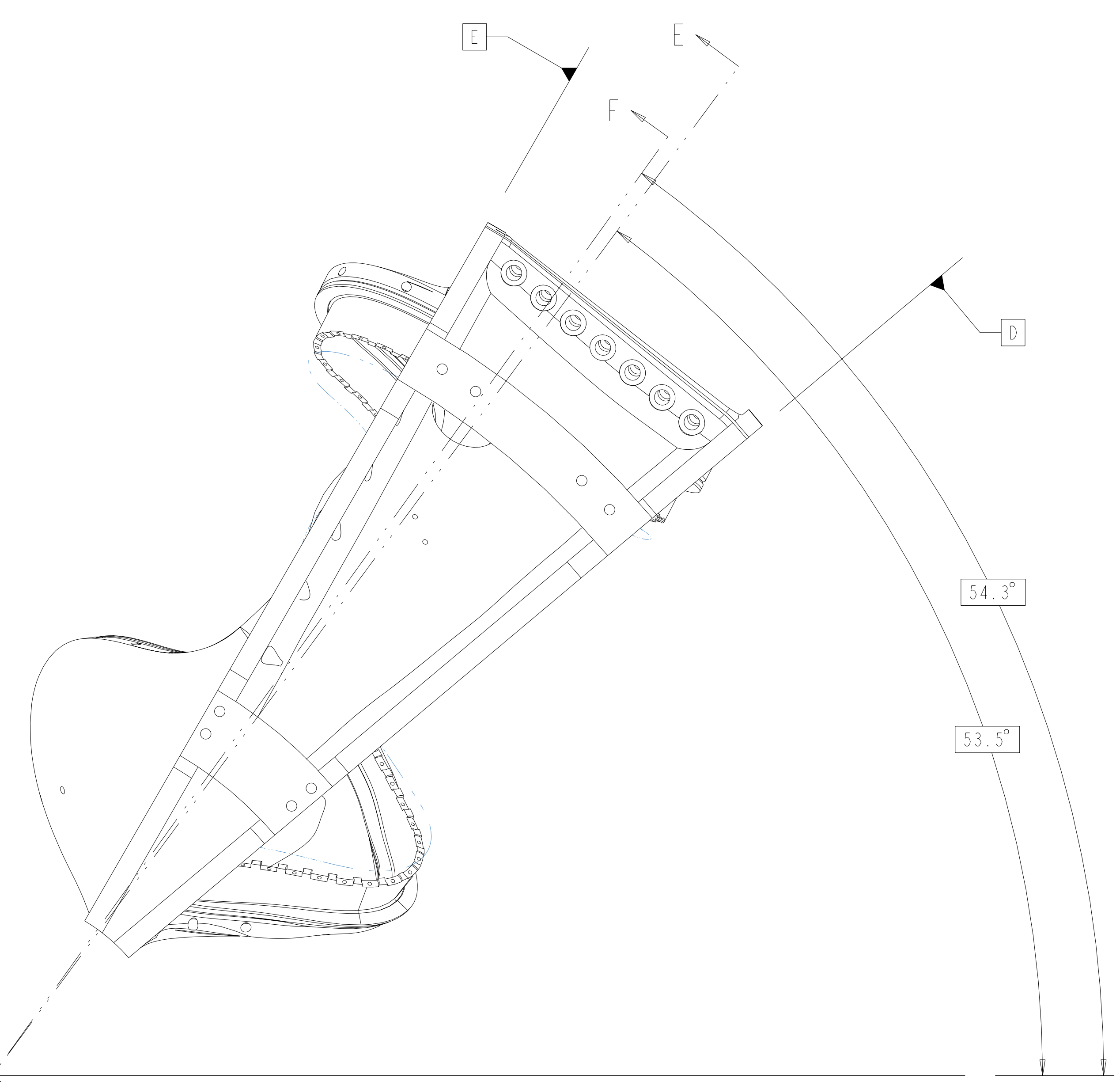
UT-BATTELLE		Oak Ridge National Laboratory managed for the DEPARTMENT OF ENERGY under U.S. GOVERNMENT contract DE-AC05-00OR22725 UT-BATTELLE, LLC, Oak Ridge, Tennessee					
NATIONAL COMPACT STELLARATOR EXPERIMENT							
PROTOTYPE TYPE "C" WINDING FORM							
VERSION NO. 33	PLANT X-10	BLDG 9201-2	FL X	SHT OF 6	TYPE 8	CLASS S	
RELEASE LEVEL Fabrication	SE141-113P					REV 0	

H
G
F
E
D
C
B
A

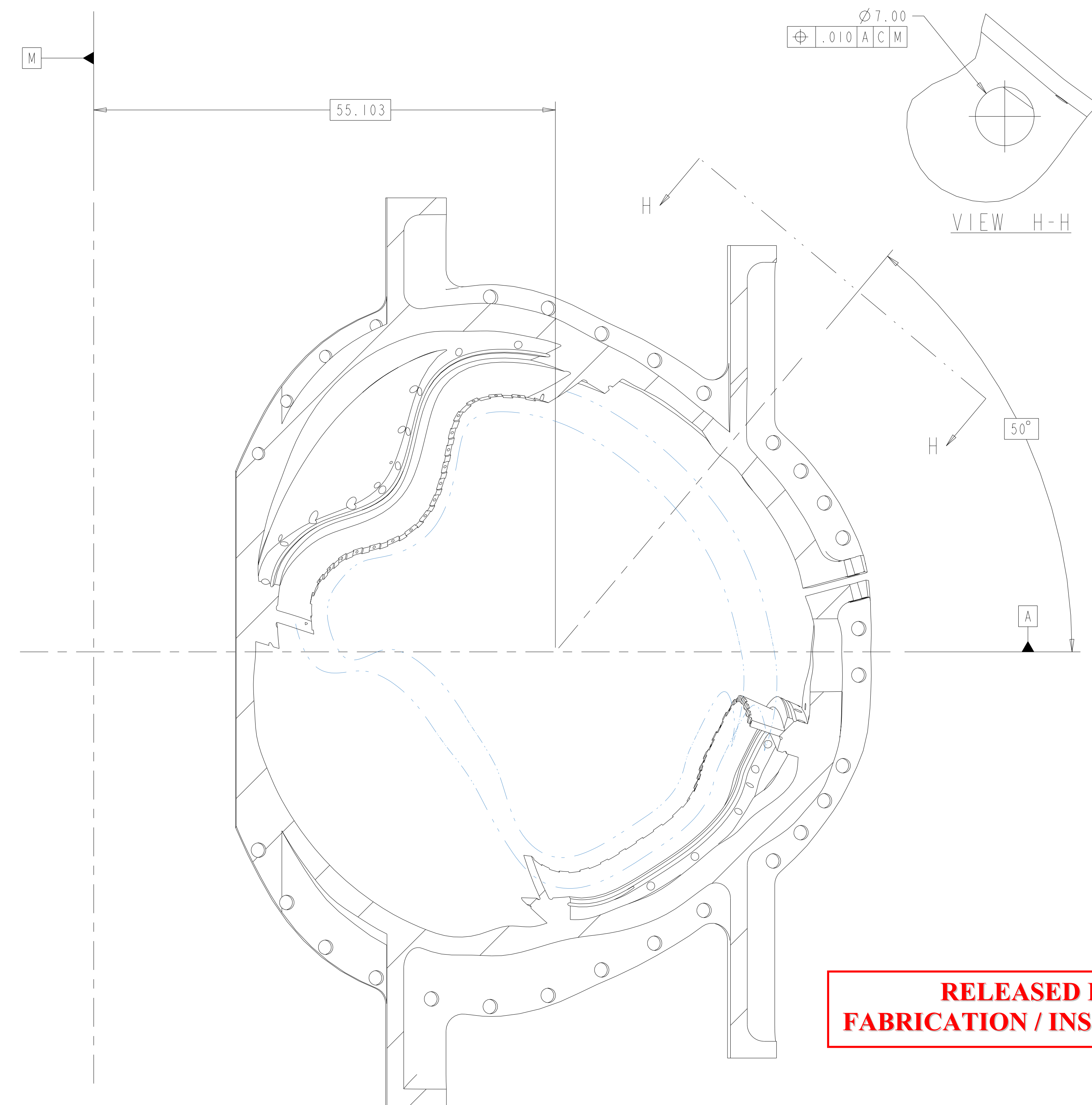
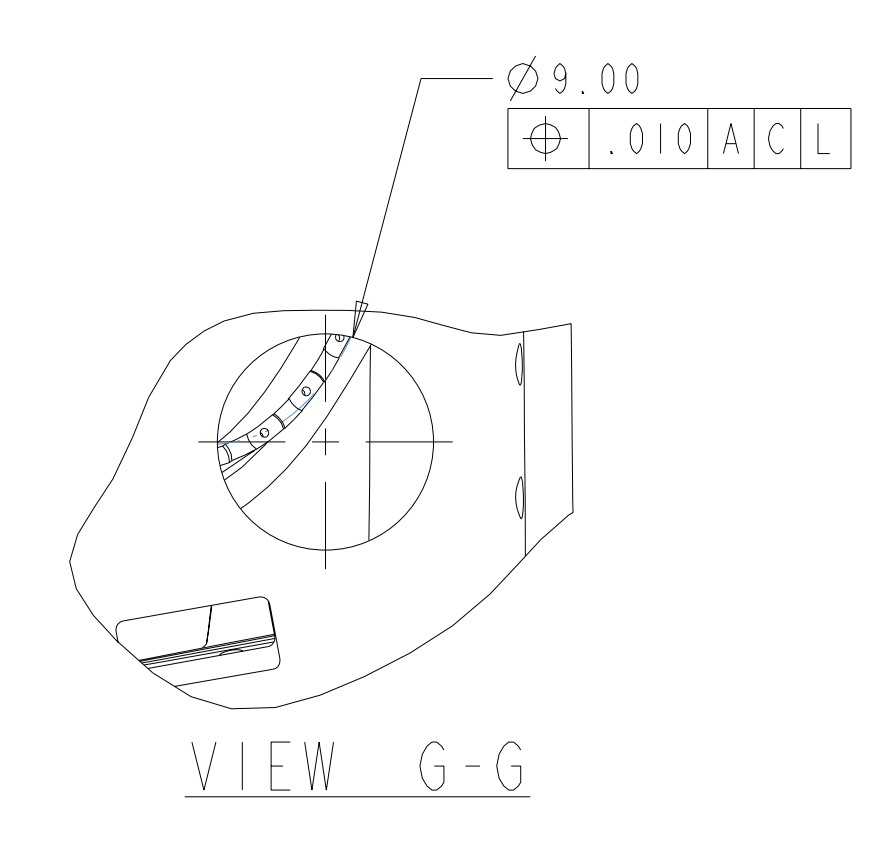
FOR GEN. NOTES AND PARTS LIST SEE SH. 1



VIEW NORMAL TO LEAD PENETRATIONS
LOCATE PER MODEL SE142-113P.PRT
SCALE: .125



SECTION E-E
SCALE: .125



SECTION F-F
SCALE: .125

RELEASED FOR FABRICATION / INSTALLATION

UT-BATTELLE		Oak Ridge National Laboratory managed for the DEPARTMENT OF ENERGY under U.S. GOVERNMENT contract DE-AC05-00OR22725 UT-BATTELLE, LLC, Oak Ridge, Tennessee					
PROJECT NAME NATIONAL COMPACT STELLARATOR EXPERIMENT							
PROTOTYPE TYPE "C" WINDING FORM							
VERSION NO. 33	PLANT X-10	BLDG 9201-2	FL X	SHT OF 7	TYPE 8	CLASS S	U
RELEASE LEVEL Fabrication		SE141-113P				REV 0	

H
G
F
E
D
C
B
A

SE141-113P

TABLE I WINDING CENTER SPLINE (FILE se141-113p-wc.fxt)

Table with 3 columns: No., X, Y, Z. Contains 101 rows of coordinate data for the winding center spline.

TABLE II X-VECTOR CURVE SPLINE (FILE se141-113p-xv.fxt)

Table with 3 columns: No., X, Y, Z. Contains 101 rows of coordinate data for the X-vector curve spline.

TABLE III SPHERICAL SEAT CENTER SIDE A (FILE se141-113p-sa.fxt)

Table with 3 columns: No., X, Y, Z. Contains 48 rows of coordinate data for spherical seat center side A.

TABLE IV SPHERICAL SEAT CENTER SIDE B (FILE se141-113p-sb.fxt)

Table with 3 columns: No., X, Y, Z. Contains 48 rows of coordinate data for spherical seat center side B.

RELEASED FOR FABRICATION / INSTALLATION

UT-BATTELLE Oak Ridge National Laboratory logo and project information including 'NATIONAL COMPACT STELLARATOR EXPERIMENT' and 'TYPE "C" WINDING FORM'.

Vertical text on the right edge: H, G, F, E, D, C, B, A