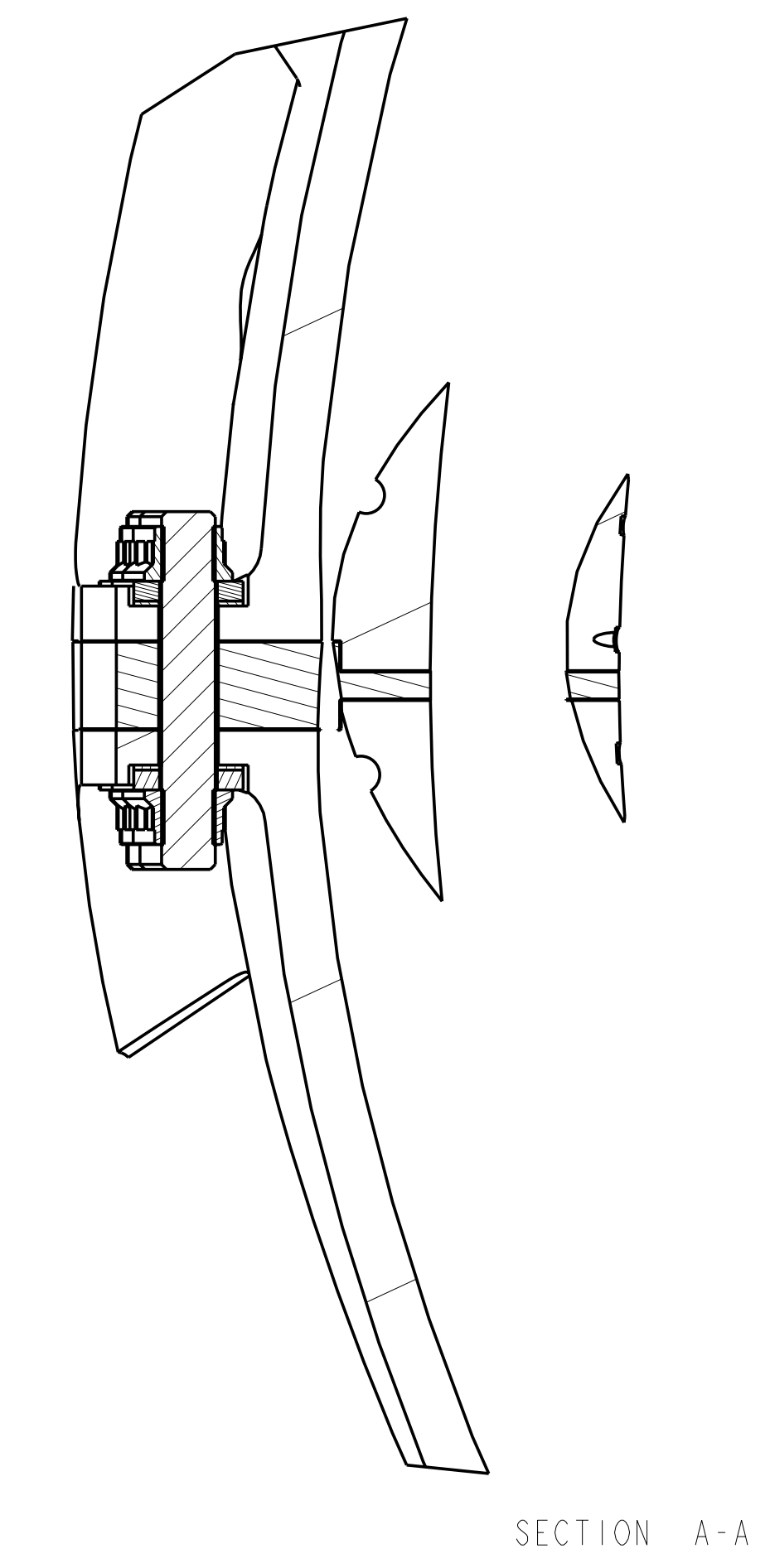
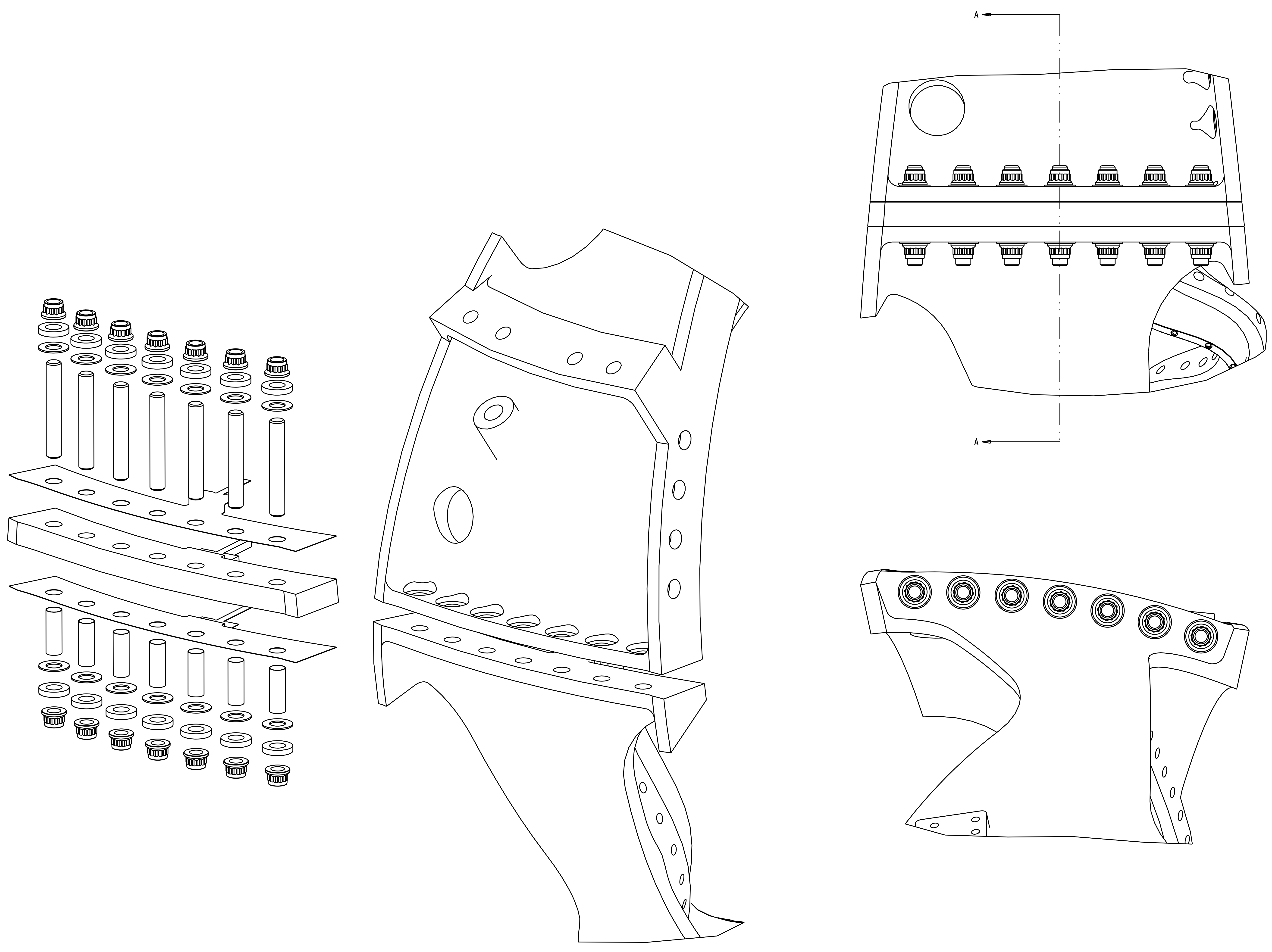


- NOTES:
1. INTERPRET DIMENSIONS AND TOLERANCES PER ANSI Y14.5M
  2. DIMENSIONS ARE IN INCHES
  3. DIMENSIONS APPLY AT ROOM TEMPERATURE. OPERATING TEMP 80 K
  4. GEOMETRY IS DEFINED IN PRO ENGINEER CAD MODELS/FILES
  5. DRAWING AND MODELS COMBINED DEFINE FINISHED MACHINED PART



REV	CAGE CODE	PART OR IDENTIFYING NO	NOMENCLATURE OR DESCRIPTION	MATERIAL	SPECIFICATION	FIND NO
1		SE141-114	TYPE-A WINDING FORM	--	--	11
1		SE141-101_SKEL	--	--	--	10
1		SE141-101	WINDING FORM TYPE-A ASSEMBLY	--	--	9
14		SE141-079	0.125 THICK FLAT WASHER	316L SS	--	8
14		SE141N080	DOUBLE HEX, SELF LOCKING, 1-3/8-6 UNF-2A	316L SS	AMS 24170	7
14		SE141-038	INSULATING WASHER	G11 LAMINATE	--	6
7		SE141-037	INSULATING TUBE	G11 LAMINATE	--	5
7		SE141-036	STUD, 1-3/8-6 UNC-2A	316L SS	--	4
1		SE141-035	TYPE-A PB UPPER INSULATOR	G11CR	--	3
1		SE141-033	TYPE-A PB SHIM	316L SS	--	2
1		SE141-031	TYPE-A PB LOWER INSULATOR	G11CR	--	1

← NEXT ASSEMBLY

PARTS LIST

NO REPRESENTATION OR WARRANTY, EXPRESSED OR IMPLIED, IS MADE AS TO THE ACCURACY, COMPLETENESS OR USEFULNESS OF THE INFORMATION OR STATEMENTS CONTAINED IN THESE DRAWINGS, OR THAT THE USE OR DISCLOSURE OF ANY INFORMATION, APPARATUS, METHOD OR PROCESS DISCLOSED IN THESE DRAWINGS MAY NOT INFRINGE PRIVATE RIGHTS OF OTHERS. NO LIABILITY IS ASSUMED WITH RESPECT TO THE USE OF, OR FOR DAMAGES RESULTING FROM THE USE OF, ANY INFORMATION, APPARATUS, METHOD OR PROCESS DISCLOSED IN THESE DRAWINGS. DRAWINGS MADE AVAILABLE FOR INFORMATION TO BIDDER ARE NOT TO BE USED FOR OTHER PURPOSES, AND ARE TO BE RETURNED UPON REQUEST OF THE FORWARDING CONTRACTOR.

**P** THIS DRAWING PRODUCED ON PRO-ENGINEER

REV	DESCRIPTION	BY	DATE	CHK	DEPT	DATE	PE	REQ	DATE	DRNL	DOE	DATE

SCALE	0	DES	PAUL MILLER	5-17-04
TOLERANCES UNLESS OTHERWISE SPECIFIED		DRW	PAUL MILLER	5-17-04
FRACTIONS		CHK		
XX DECIMALS	± .01	SECT		
XXX DECIMALS	± .005	DEPT		
ANGLES	± 0'15"	PE		
BREAK SHARP EDGES	06 MAX	CR		
FINISH	AS UNLESS OTHERWISE SPECIFIED	PJ		
		RED		
		PPPL DRFT		

**UT-BATTELLE** Oak Ridge National Laboratory  
 managed for the DEPARTMENT OF ENERGY under  
 U.S. GOVERNMENT contract DE-AC05-00OR22725  
 UT-BATTELLE, LLC. Oak Ridge, Tennessee

**NATIONAL COMPACT STELLARATOR EXPERIMENT**

WINDING FORM TYPE-A ASSEMBLY

VERSION NO.	PLANT	BLDG	FL	SHT OF	TYPE	CLASS
14	X-10	5700	3	1	S	U
RELEASE LEVEL						REV
WIP	SE141-101					0

H  
G  
F  
E  
D  
C  
B  
A