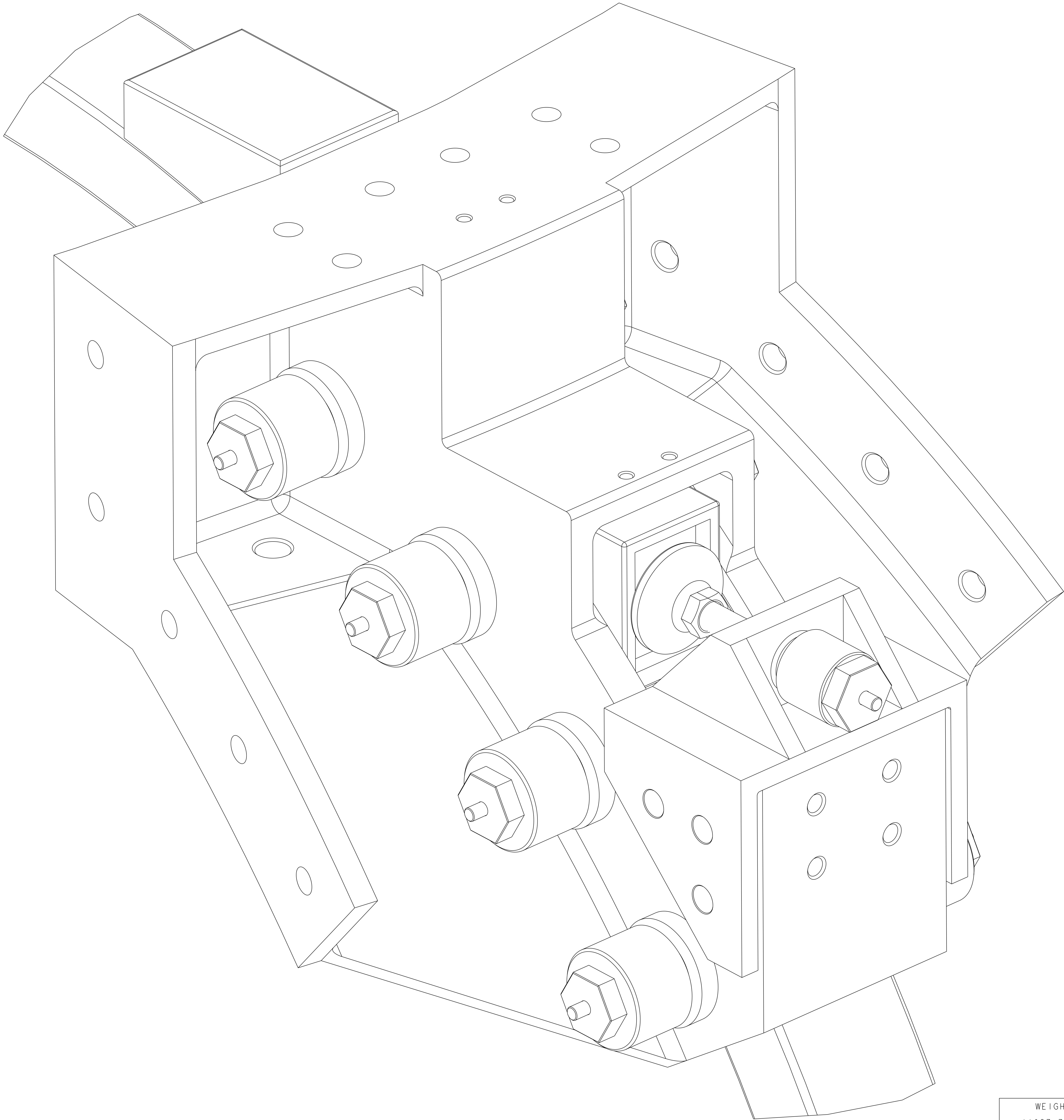


NO.	REVISION	BY	CH	SUP	APPROVED	DATE

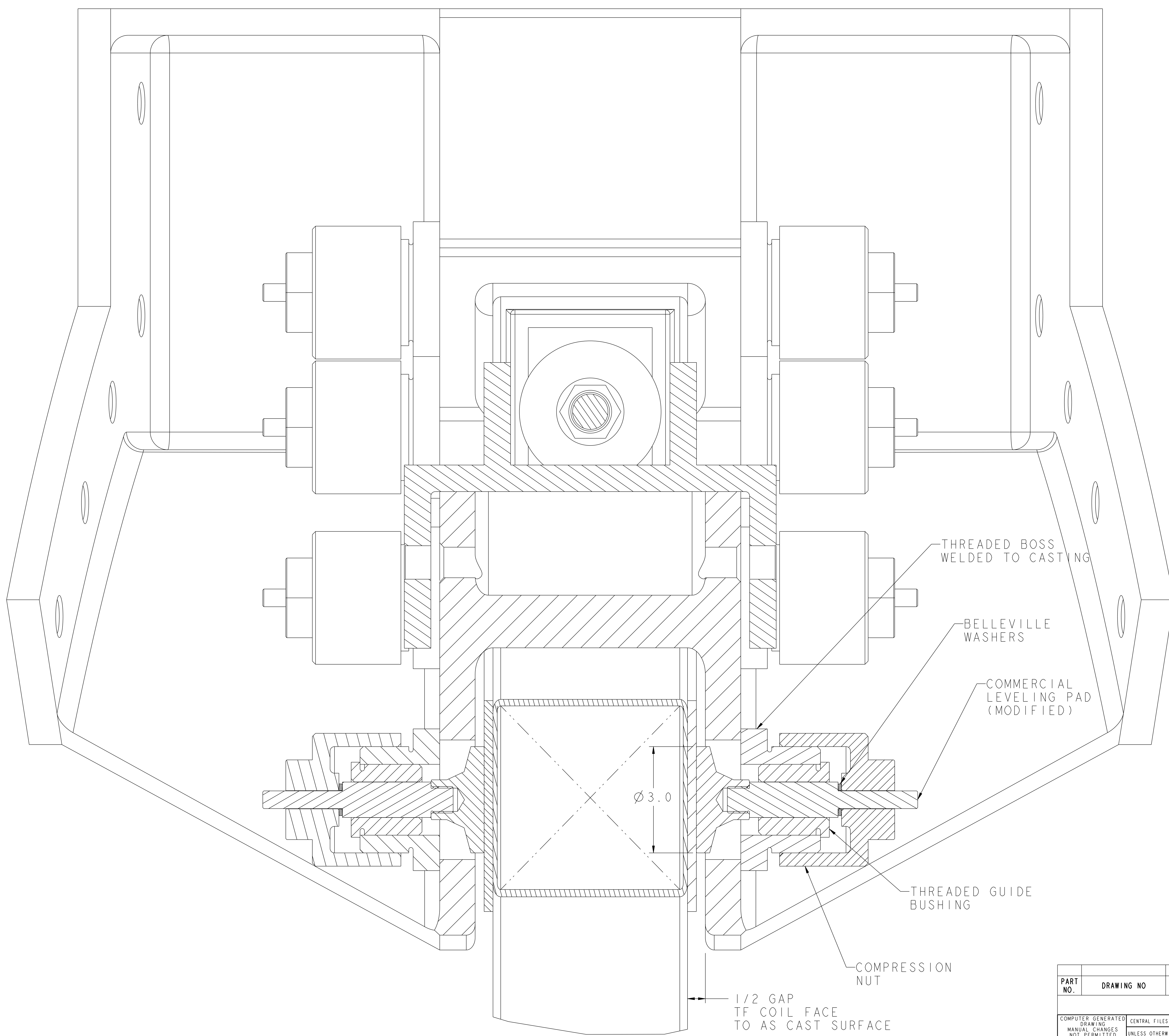


12	SE130-026	TF COIL THREADED GUIDE BUSHING	STN STL	8
11	SE130-030	TF COIL SIDE SWIVEL PAD ASSEMBLY	STN STL	8
10	SE130-024	TF COIL RADIAL LOAD BRACKET	STN STL	1
9	SE130-038	TF COIL LEVELING PAD ADJUSTING NUT	STN STL	1
8	SE130-029	TF COIL LEVELING PAD ADJUSTING NUT	STN STL	8
7	SE130-028	TF COIL CASTING THREADED BOSS	STN STL	8
6	SE130-003	HALF PERIOD WEDGED TF ASSEMBLY	SS	1
5	8F89718	1/2 BELLEVILLE SPRING WASHER SOLON #8F89718	INCONEL 718	8
4	SE130-031	TF COIL OUTER LEG SIDE SHIM PLATE	G-10	2
3	SE131-009	TF COIL ASSEMBLY	COPPER/INSULATION	1
2	SE151-015	TF COIL OUTBOARD UPPER/LOWER SUPPORT	304 STN STL	1
1	SE130-040	--	--	1

PART NO.	DRAWING NO	NOMENCLATURE OR DESCRIPTION	MATERIAL	QTY RECD
PARTS LIST				
COMPUTER GENERATED DRAWING MANUAL CHANGES NOT PERMITTED		CENTRAL FILES: UNLESS OTHERWISE SPECIFIED	PRINCETON PLASMA PHYSICS LABORATORY PRINCETON UNIVERSITY	
Do NOT VERIFY INFORMATION BY SCALING DRAWING		DIMENSIONS ARE IN INCHES MACHINE SURFACES BREAK SHARP EDGES .005/.020	NATIONAL COMPACT STELLARATOR EXPERIMENT	
SCALE 0.750		TOLERANCES NON-CUMULATIVE	DSN: J. RUSHINSKI	DRAWING NO:
NEXT ASSEMBLY		DECIMAL-INCH FRACTIONS .X +/- .000 0°-120° +/- .010 .XX +/- .005 120°-120° +/- .010 .XXX +/- .005 OVER 120° +/- .010	ENGR:	SE130-003
WEIGHT 11037.7 lbs		WELDING ENGINEER	SUPV:	SHEET 1 OF 2
MODEL NAME SE130-003				REV

RELEASE LEVEL: WIP
DWG VERSION NO: 0

NO.	REVISION	BY	CH	SUP	APPROVED	DATE



THREADED BOSS
WELDED TO CASTING

BELLEVILLE
WASHERS

COMMERCIAL
LEVELING PAD
(MODIFIED)

THREADED GUIDE
BUSHING

COMPRESSION
NUT

1/2 GAP
TF COIL FACE
TO AS CAST SURFACE

Ø 3.0

WEIGHT
11037.7 lbs

MODEL NAME
SE130-003

RELEASE LEVEL: WIP
DWG VERSION NO:

PART NO.	DRAWING NO	NOMENCLATURE OR DESCRIPTION	MATERIAL	QTY RECD
PARTS LIST				
COMPUTER GENERATED DRAWING MANUAL CHANGES NOT PERMITTED Pro E		CENTRAL FILES: UNLESS OTHERWISE SPECIFIED	PRINCETON PLASMA PHYSICS LABORATORY PRINCETON UNIVERSITY	
DO NOT VERIFY INFORMATION BY SCALING DRAWING		DIMENSIONS ARE IN INCHES MACHINE SURFACES BREAK SHARP EDGES .005/.020	NATIONAL COMPACT STELLARATOR EXPERIMENT STELLARATOR CORE CONVENTIONAL COILS SECTION THROUGH TF COIL OUTER LEG RESTRAINT	
NEXT ASSEMBLY		TOLERANCES NON-CUMULATIVE DECIMAL-INCH FRACTIONS .XX ±.000 0°-120° ±.120° .XXX ±.005 72°-120° ±.124° ANGULAR ±.0°-15° OVER 120° ±.122°	DSN: J. RUSHINSKI	DRAWING NO: SE130-003
WELDING ENGINEER		ENGR:	SUPV:	SHEET 2 OF 2 REV

NCSX-SE130-003