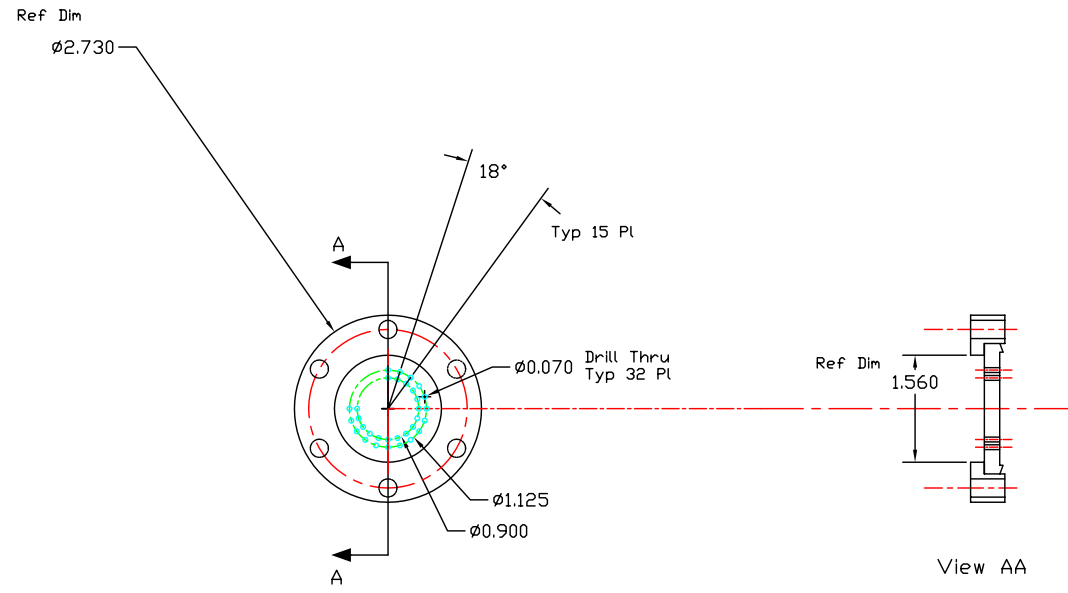
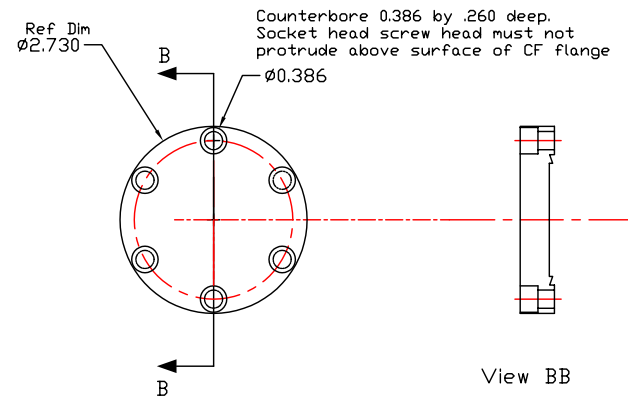
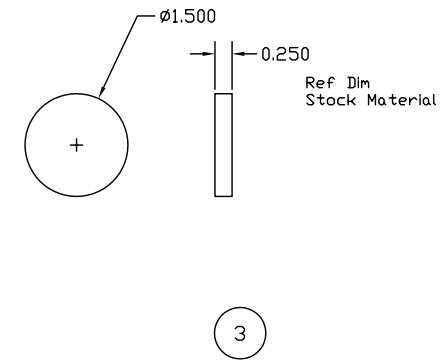


NO.	REVISION	BY	CH	SUP	APPROVED	DATE



1



2

REV	NO.	DESCRIPTION	DATE	BY	CHK	APP	MATERIAL
	24	3	Comm. Rubber Sheet 5/16 0.25 Inch Thk				Silicone Rubber
	24	2	Comm. 2 3/8 Non Rotatable CF Thru Holes				304 SS
	24	1	Comm. 2 3/8 Rotatable CF Thru Holes				304 SS
	24		ASSEMBLY/WELDMENT				

03	02	01	PART NO.	NOMENCLATURE OR DESCRIPTION	DRAWING NO.	MATERIAL

COMPUTER GENERATED DRAWING MANUAL CHANGES NOT PERMITTED	AutoCAD2000	UNLESS OTHERWISE SPECIFIED DIMENSIONS ARE IN INCHES MACHINE SURFACES 12/1	BREAK SHARP EDGES .005/.020	SCALE:	TOLERANCES - NON-CUMULATIVE	DECIMAL - INCH FRACTIONS	DWG: G LABIK DWN: G LABIK CHK: L Morris	DATE: 2 March 07	DATE FILE:

WELDING ENGINEER	DATE	APPROVED	DATE
G Gattellinger		G LABIK	

PRINCETON PLASMA PHYSICS LABORATORY PRINCETON UNIVERSITY NATIONAL COMPACT STELLARATOR EXPERIMENT MAGNETIC DIAGNOSTICS EXTERNAL FLUX LOOPS SENSING CABLE VERTICAL PORT 12 - CF INTERFACE	se 310-035	SHEET 1 OF 1	REV 0
--	------------	--------------	-------