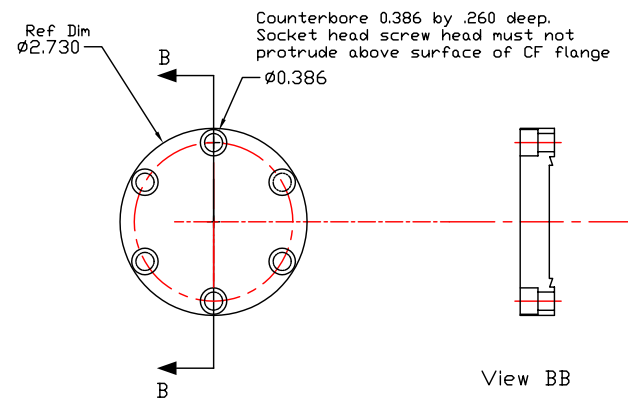
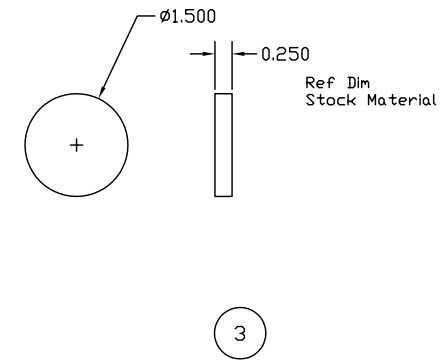
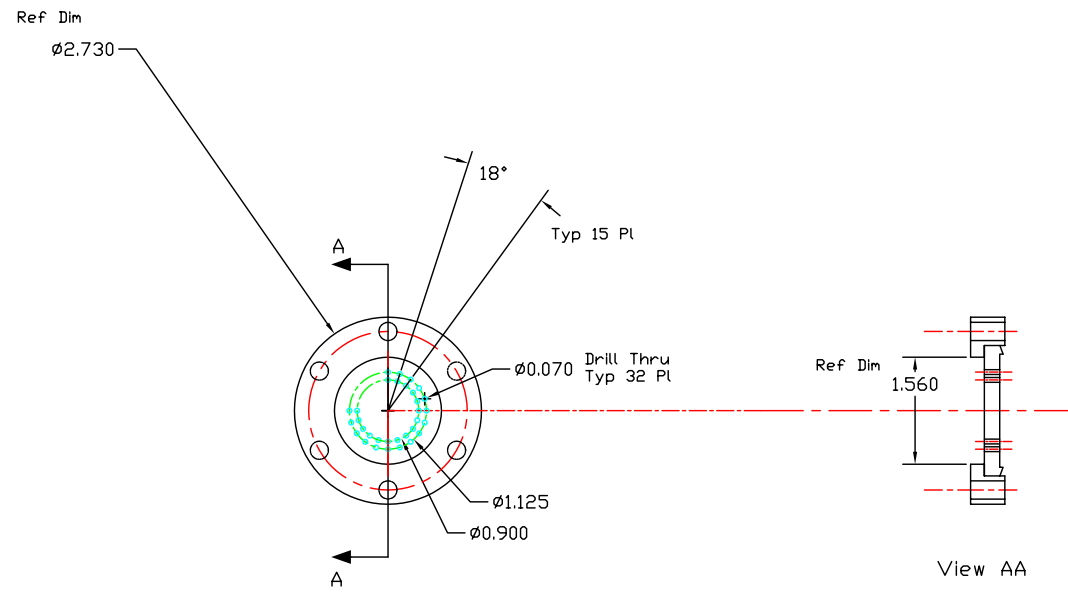


NO.	REVISION	BY	CH	SUP	APPROVED	DATE



**RELEASED FOR  
FABRICATION / INSTALLATION**

PPPL Drafting:

WELDING ENGINEER  
 APPVD: \_\_\_\_\_ DATE \_\_\_\_\_  
 G Gattellinger

NO.	REV.	DESCRIPTION	DATE	BY	CHK	SUP	APPROVED	DATE
24	3	Comm. Rubber Sheet 5/16 0.25 Inch Thk						
24	2	Comm. 2 3/8 Non Rotatable CF Thru Holes						
24	1	Comm. 2 3/8 Rotatable CF Thru Holes						
24		ASSEMBLY/WELDMENT						
03	02	01	PART NO.	NOMENCLATURE OR DESCRIPTION			DRAWING NO.	MATERIAL
COMPUTER GENERATED DRAWING		CENTRAL FILES:		PRINCETON PLASMA PHYSICS LABORATORY				
MANUAL CHANGES NOT PERMITTED		UNLESS OTHERWISE SPECIFIED		PRINCETON UNIVERSITY				
AutoCAD2000		DIMENSIONS ARE IN INCHES		NATIONAL COMPACT STELLARATOR EXPERIMENT				
DO NOT VERIFY INFORMATION BY SCALING DRAWING		BREAK SHARP EDGES .005/.020		MAGNETIC DIAGNOSTICS				
		SCALE: _____		EXTERNAL FLUX LOOPS				
		NEXT ASSEMBLY:		SENSING CABLE VERTICAL PORT 12 - CF INTERFACE				
		TOLERANCES - NON-CUMULATIVE		DWN: FOM		DATE: 2 March 07		
		DECIMAL - INCH		FRACTIONS		DRAWN: G LABIK		
		.X .XXX		1/16 1/8 1/4 3/8 1/2		APPVD: G LABIK		
		.001 .002 .005 .010 .020 .050 .100		1/16 1/8 1/4 3/8 1/2		CHK: SUPV		
		ANGULAR 15°-15°		OVER 15° 15/2		se 310-035		
						SHEET 1 OF 1 REV 0		