

1. DRAWINGS PREPARED IN ACCORDANCE WITH ASME Y14.100-2000
2. INTERPRET DIMENSIONS & TOLERANCES PER ASME Y14.5-1994.
3. DIMENSIONS ARE IN INCHES.
4. SEE SPECIFICATION NCSX-CSPEC-XXX-XX-XX FOR ADDITIONAL INFORMATION AND/OR MATERIAL REQUIREMENTS.

NOTE:

WORK THIS DRAWING WITH DRAWING SE172-201.

3 ASSEMBLIES REQUIRED

PART NO.	DRAWING NO	NOMENCLATURE OR DESCRIPTION	MATERIAL	QTY	RECD
16	NS151345	1" SPLIT LOCK WASHER	STN STL	6	
15	NS151342	1" FLAT WASHER	STN STL	2	
14	92240A916	1-8 UNC X 3 LG HEX HD CAP SCREW McMASTER CARR #92240A916	18-8 STN STL	6	
13	92198A920	1-8 UNC X 4" LG HEX HD BOLT McMASTER CARR #92198A920	18-8 STN STL	2	
12	92196A845	3/4-10 x 2 1/2 LG SOC HD CAP SCREW McMASTER CARR #92196A845	18-8 STN STL	8	
11	151335	3/4" SPLIT LOCK WASHER	STN STL	16	
10	150776	3/4-10 UNC x 2 LG HEX SOC HD CAP SCREW	STN STL	8	
9	SE172-250	SUPPORT COLUMN SPHERICAL JOINT ASSEMBLY		1	
8	SE172-243	OUTER SUPPORT PEDESTAL COLUMN WELDMENT - C-C JOINT		1	
7	SE172-240	MACHINE BASE SUPPORT OUTER COLUMN ASSEMBLY		1	
6	SE172-219-6	SLIDING BASE RETAINER PLATE	304L ST STL	2	
5	SE172-219-5	BASE SUPPORT OUTER SUPPORT COLUMN INSULATOR BUSHING	6-10	2	
4	SE172-219-4	PERIOD SUPPORT PEDESTAL INSULATING SHIM PLATE	6-10	1	
3	SE172-219-3	SUPPORT COLUMN JOINT ASSEMBLY SIDE PAD	PTFE	2	
2	SE172-219-2	SUPPORT COLUMN JOINT ASSEMBLY BASE PAD	304L ST STL/PTFE	1	
1	SE172-219-1	SUPPORT COLUMN JOINT ASSEMBLY RETAINING BRACKET	304L ST STL	2	

PARTS LIST

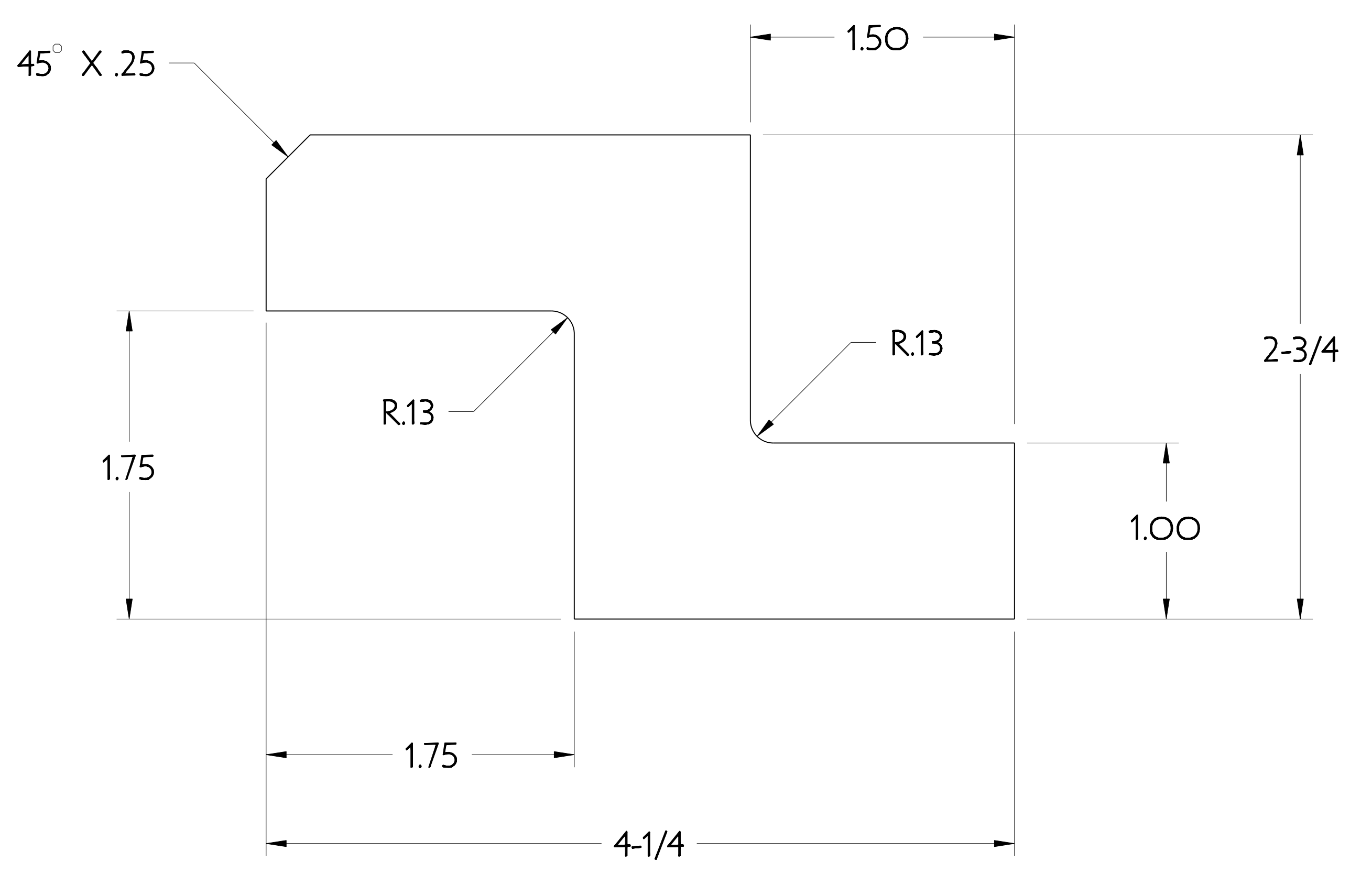
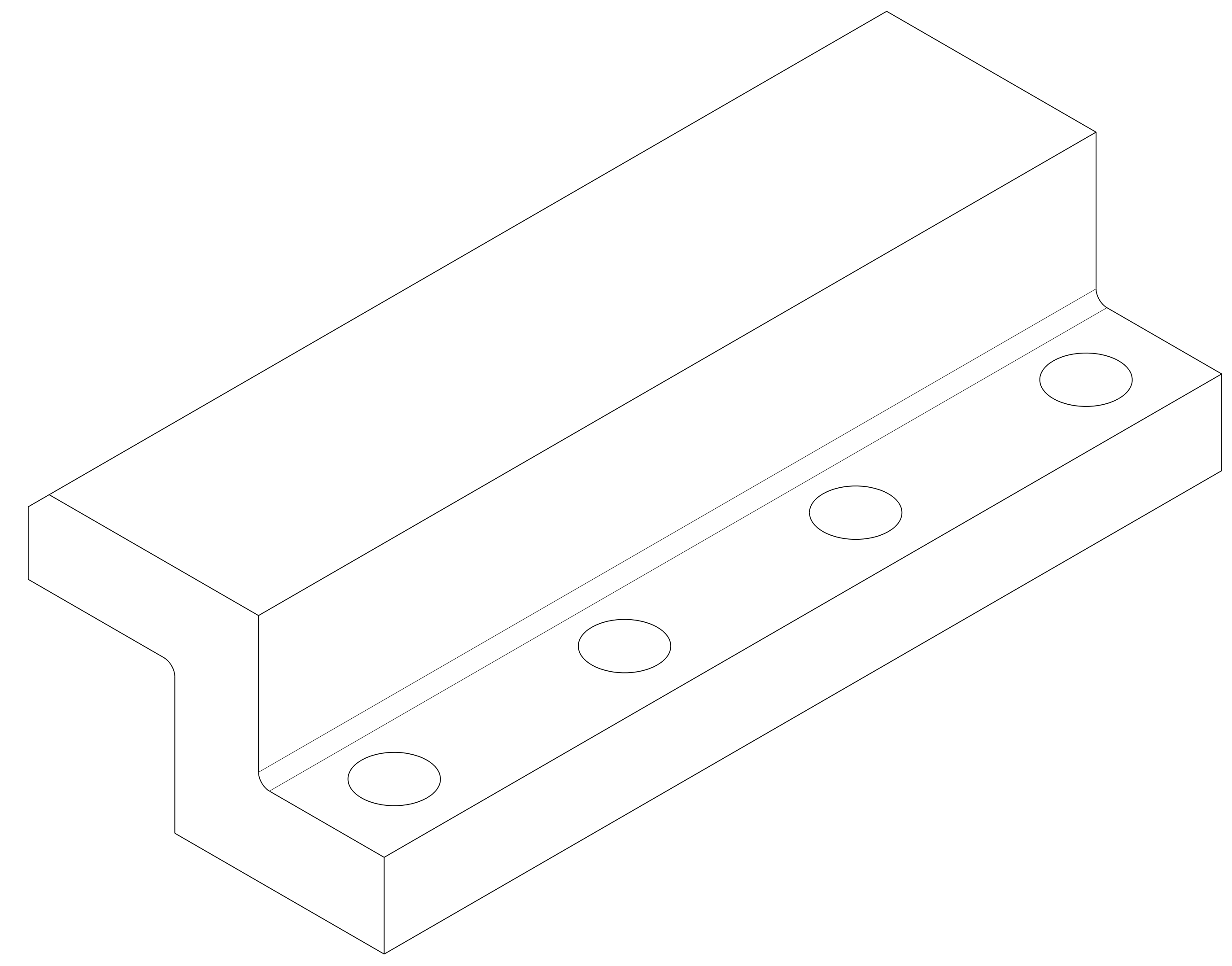
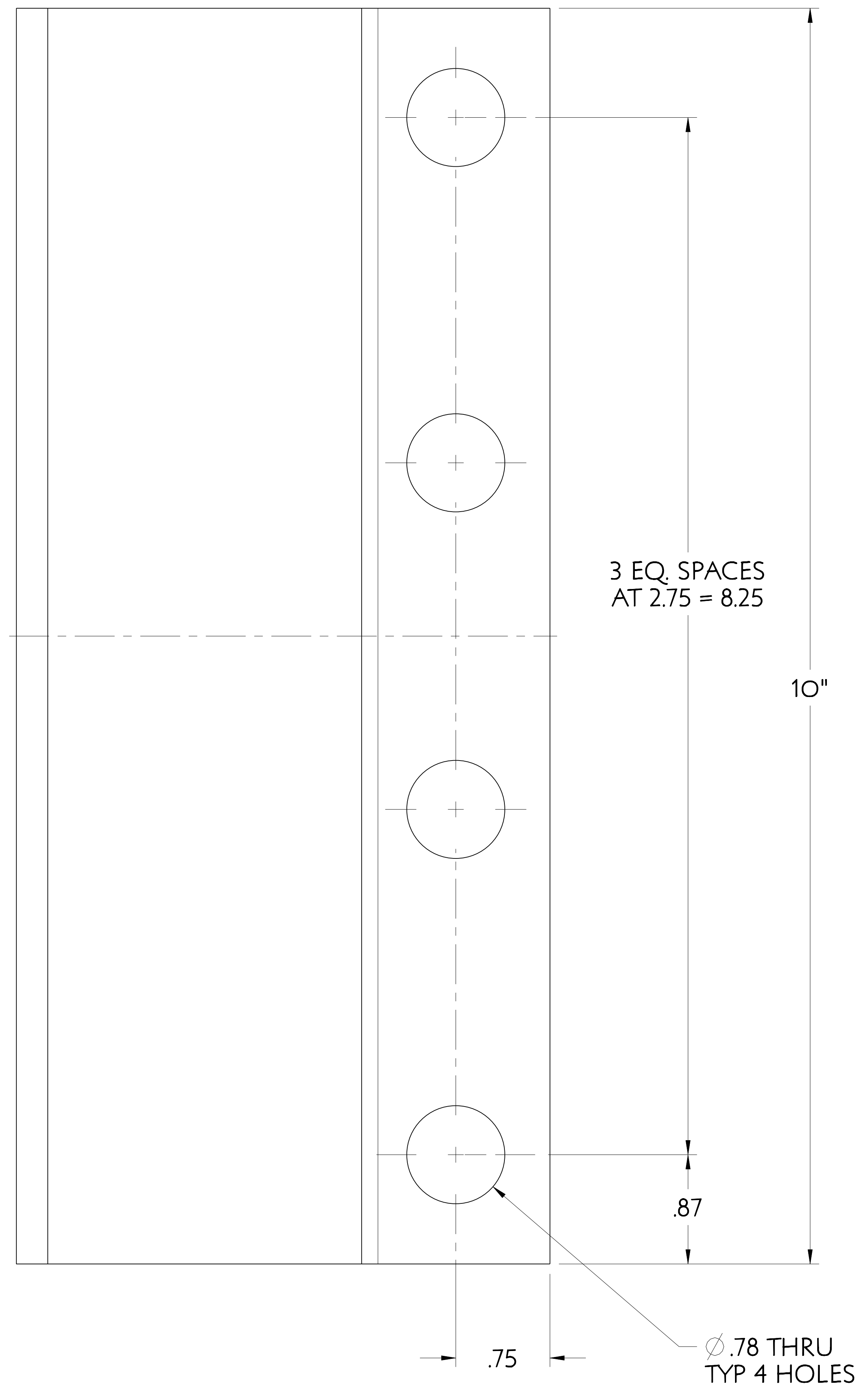
COMPUTER GENERATED DRAWING MANUAL CHANGES NOT PERMITTED	CENTRAL FILES: UNLESS OTHERWISE SPECIFIED	PRINCETON PLASMA PHYSICS LABORATORY PRINCETON, NJ 08542 NATIONAL COMPACT STELLARATOR EXPERIMENT	
DO NOT VERIFY INFORMATION BY SCALING DRAWING	TOLERANCES NON-CUMULATIVE DECIMAL-INCH FRACTIONS XX +/- .030 12"-12" +/- .118 XXX +/- .005 12"-120" +/- .118 ANGULAR +/- .05	DSN: T. CRUICKSHANK CHK: ENGR: F. DAHLGREN SUPV:	DRAWING NO: SE172-219 SHEET 1 OF 6 REV 0

WEIGHT 1302.3 lbs
MODEL NAME SE172-219
WELDING ENGINEER

RELEASE LEVEL: WIP
DWG VERSION NO: 10

NCSX-SE172-219

NO.	REVISION	BY	CH	SUP	APPROVED	DATE



2 SUPPORT COLUMN JOINT ASSEMBLY RETAINING BRACKET

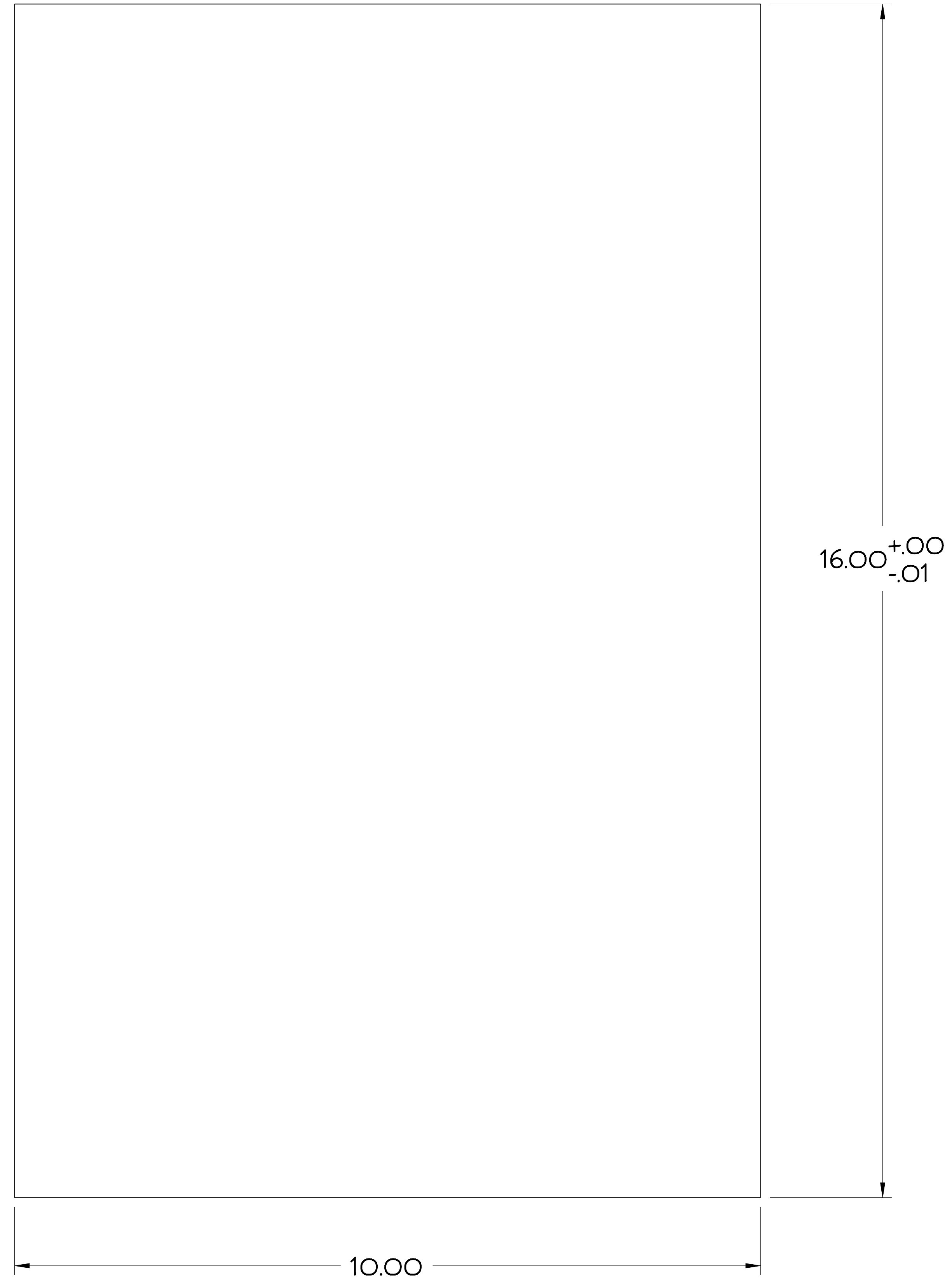
12 REQUIRED

FOR NOTES AND BILL OF MATERIAL SEE SHEET 1

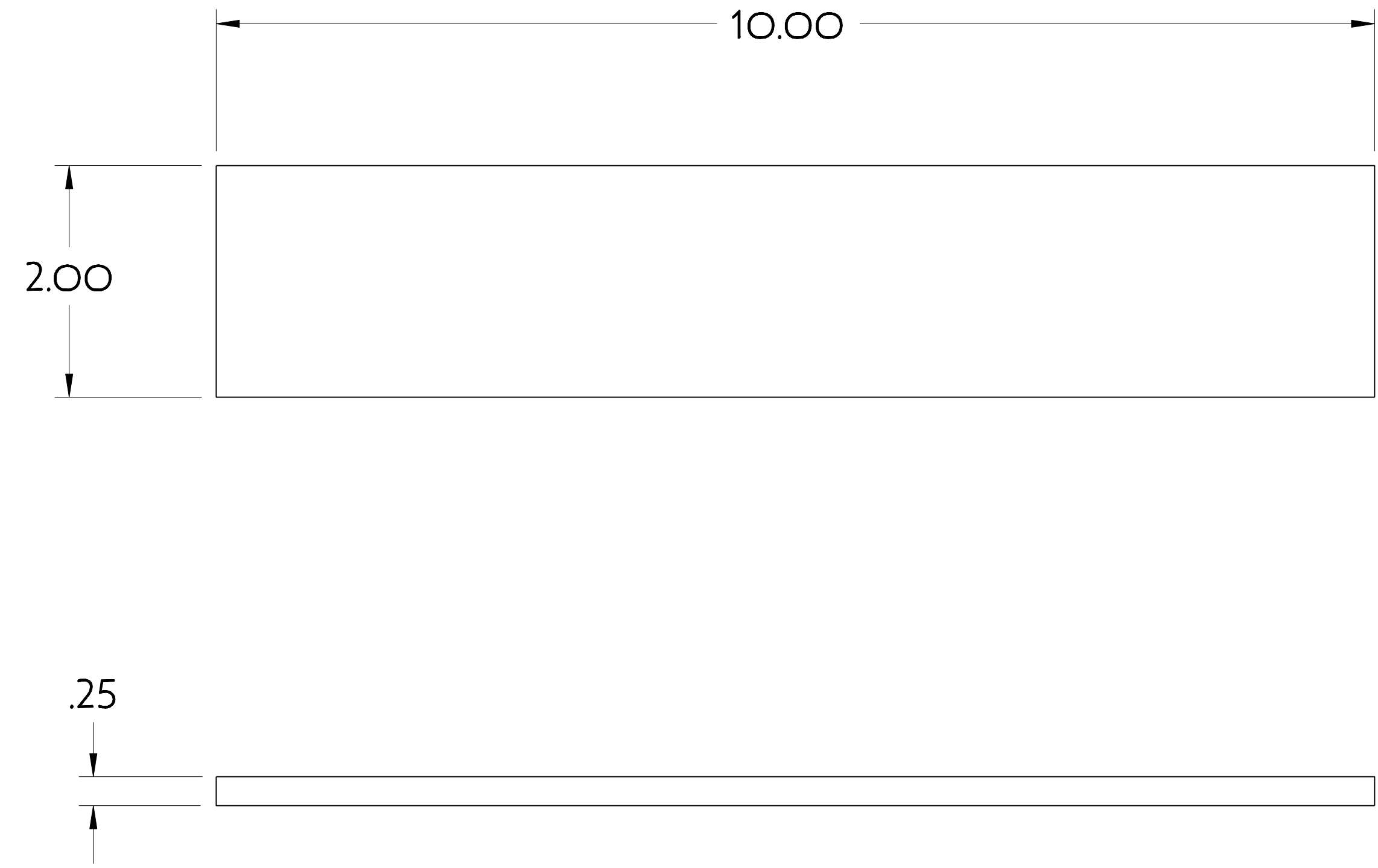
COMPUTER GENERATED DRAWING CHANGES NOT PERMITTED Pro E	CENTRAL FILES:	PRINCETON PLASMA PHYSICS LABORATORY NATIONAL COMPACT STELLARATOR EXPERIMENT	
	UNLESS OTHERWISE SPECIFIED	STELLARATOR CORE BASE SUPPORT STRUCTURE OUTER COLUMN UPPER SUPPORT ASSEMBLY	
DO NOT VERIFY INFORMATION BY SCALING DRAWING	DIMENSIONS ARE IN INCHES MACHINE SURFACES BREAK SHARP EDGES .005/.020	TOLERANCES NON-CUMULATIVE	DSN: T. CRUICKSHANK CHK: F. DAHLGREN ENGR: F. DAHLGREN SUPV:
NEXT ASSEMBLY	DECIMAL-INCH FRACTIONS	DRAWING NO: SE172-219	
WEIGHT 16.8 lbs	MODEL NAME SE172-219-6	WELDING ENGINEER	RELEASE LEVEL: WIP DWG VERSION NO: 4
		SHEET 2 OF 6 REV B, 2	

NCSX-SE172-219

NO.	REVISION	BY	CH	SUP	APPROVED	DATE



2 SUPPORT COLUMN JOINT ASSEMBLY BASE PAD
6 REQUIRED



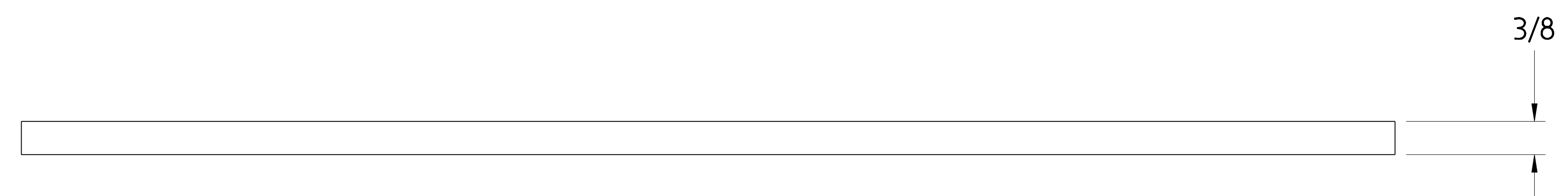
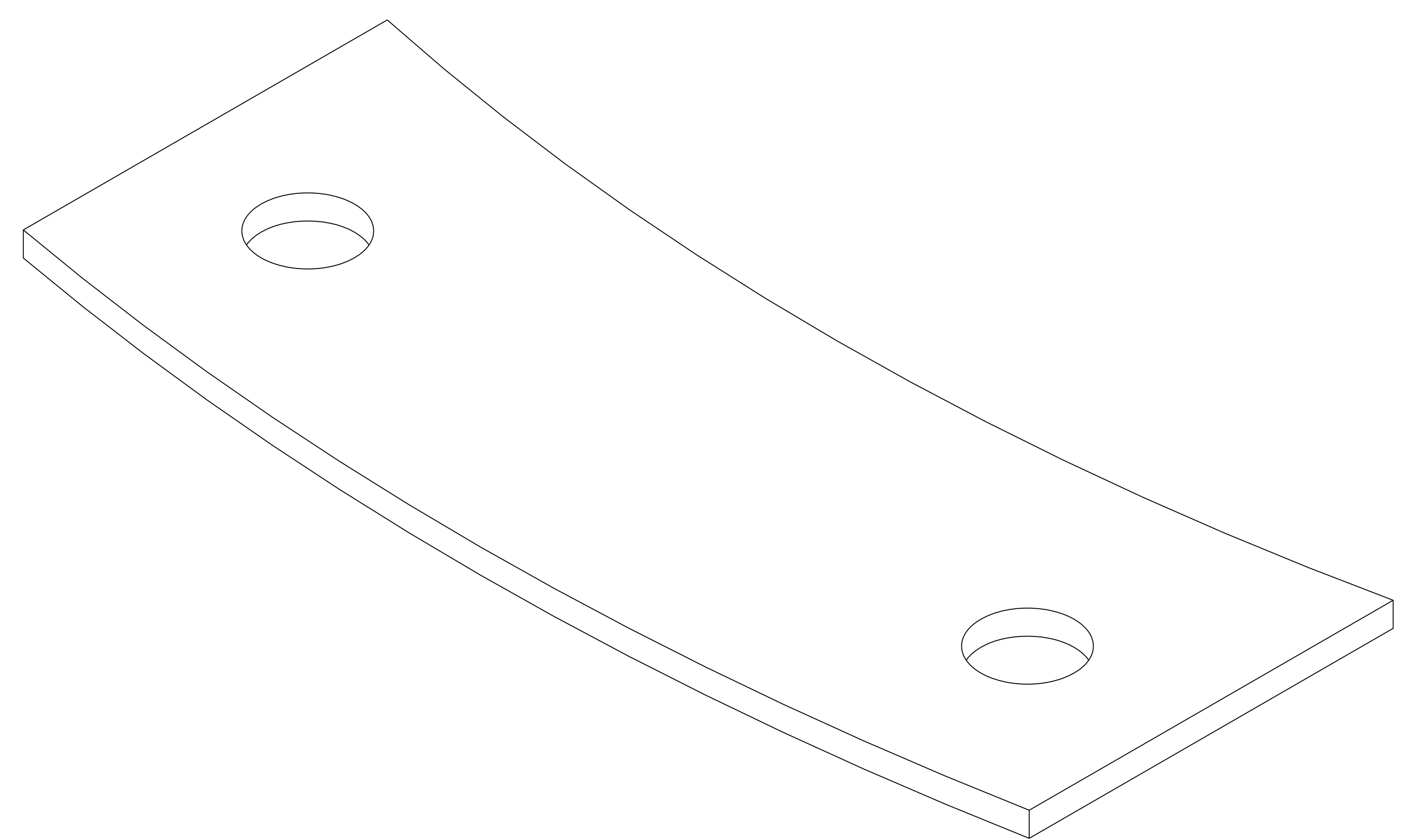
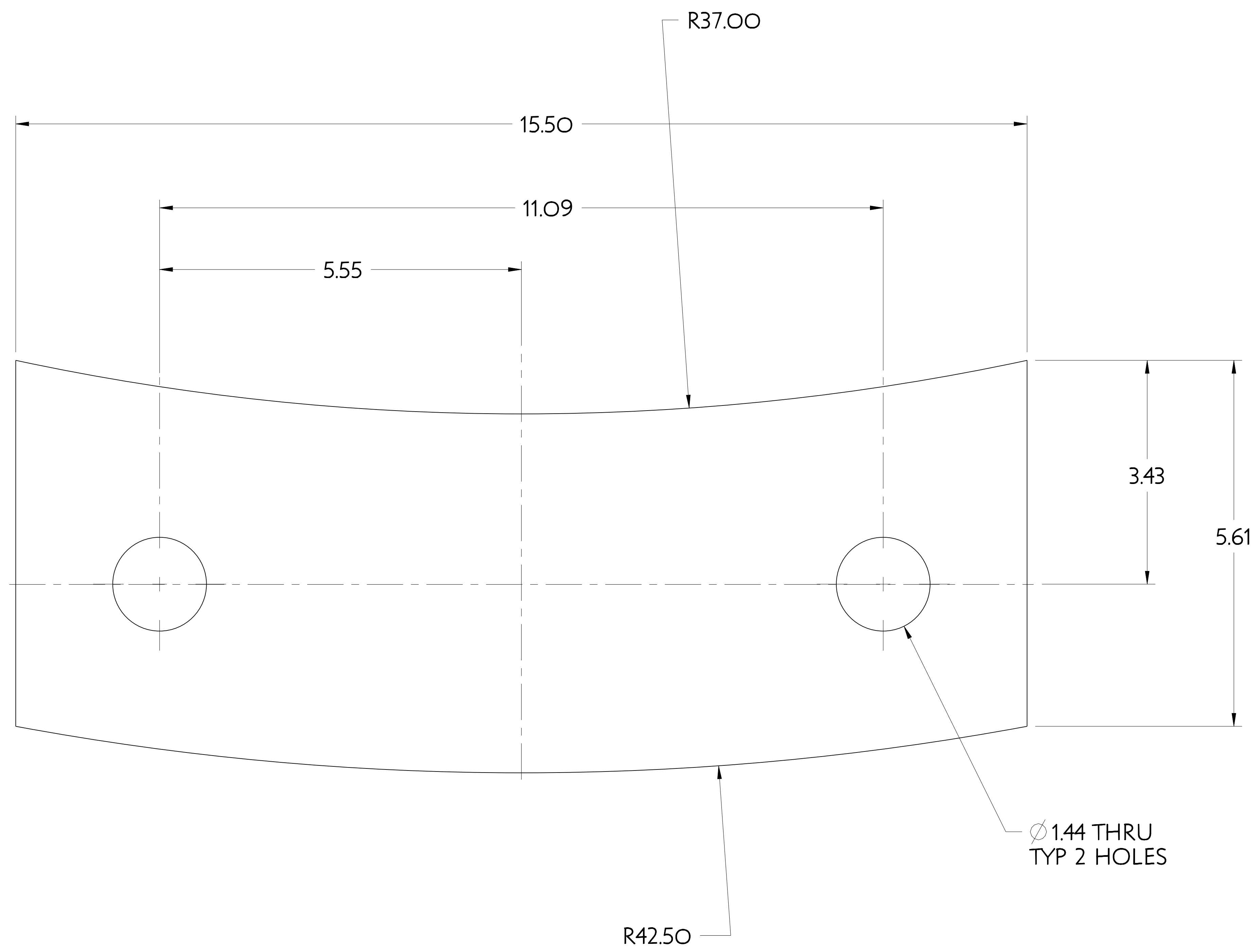
3 SUPPORT COLUMN JOINT ASSEMBLY SIDE PAD
12 REQUIRED

FOR NOTES AND BILL OF MATERIAL SEE SHEET 1

COMPUTER GENERATED DRAWING MANUAL CHANGES NOT PERMITTED Pro E	CENTRAL FILES:	PRINCETON PLASMA PHYSICS LABORATORY NATIONAL COMPACT STELLARATOR EXPERIMENT	
	UNLESS OTHERWISE SPECIFIED	STELLARATOR CORE BASE SUPPORT STRUCTURE OUTER COLUMN UPPER SUPPORT ASSEMBLY	
DO NOT VERIFY INFORMATION BY SCALING DRAWING	DIMENSIONS ARE IN INCHES MACHINE SURFACES	BREAK SHARP EDGES .005/.020	DSN: T. CRUICKSHANK
WEIGHT 6.2 lbs	TOLERANCES - NON-CUMULATIVE	DECIMAL - INCH FRACTIONS	CHK: ENGR: F. DAHLGREN
MODEL NAME SE172-219-6			DRAWING NO: SE172-219
RELEASE LEVEL: WIP DWG VERSION NO: 4	WELDING ENGINEER		SUPV: SHEET 3 OF 6 REV B, 2

NCSX-SE172-219

NO.	REVISION	BY	CH	SUP	APPROVED	DATE



4 PERIOD SUPPORT PEDESTAL INSULATING SHIM PLATE

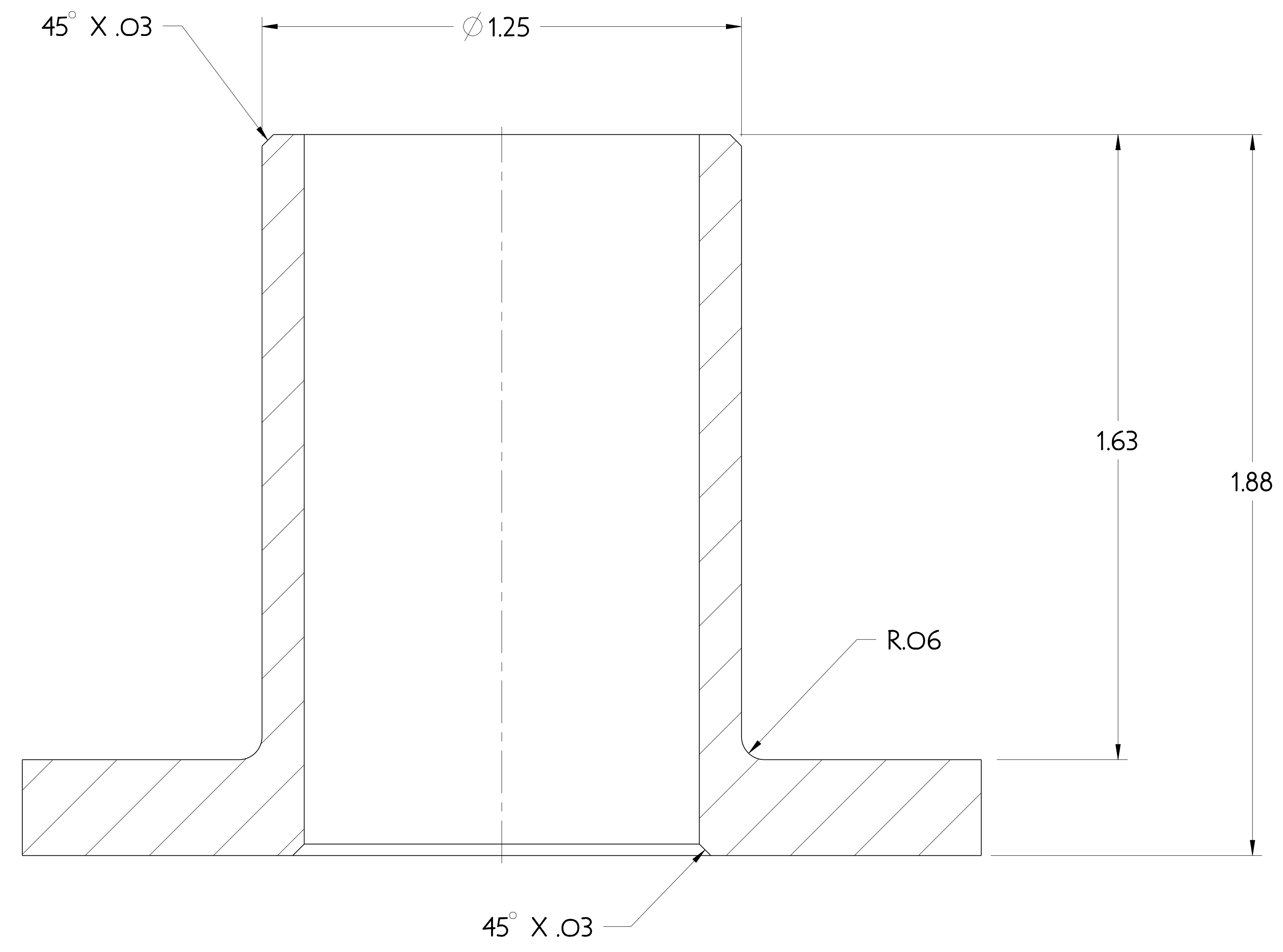
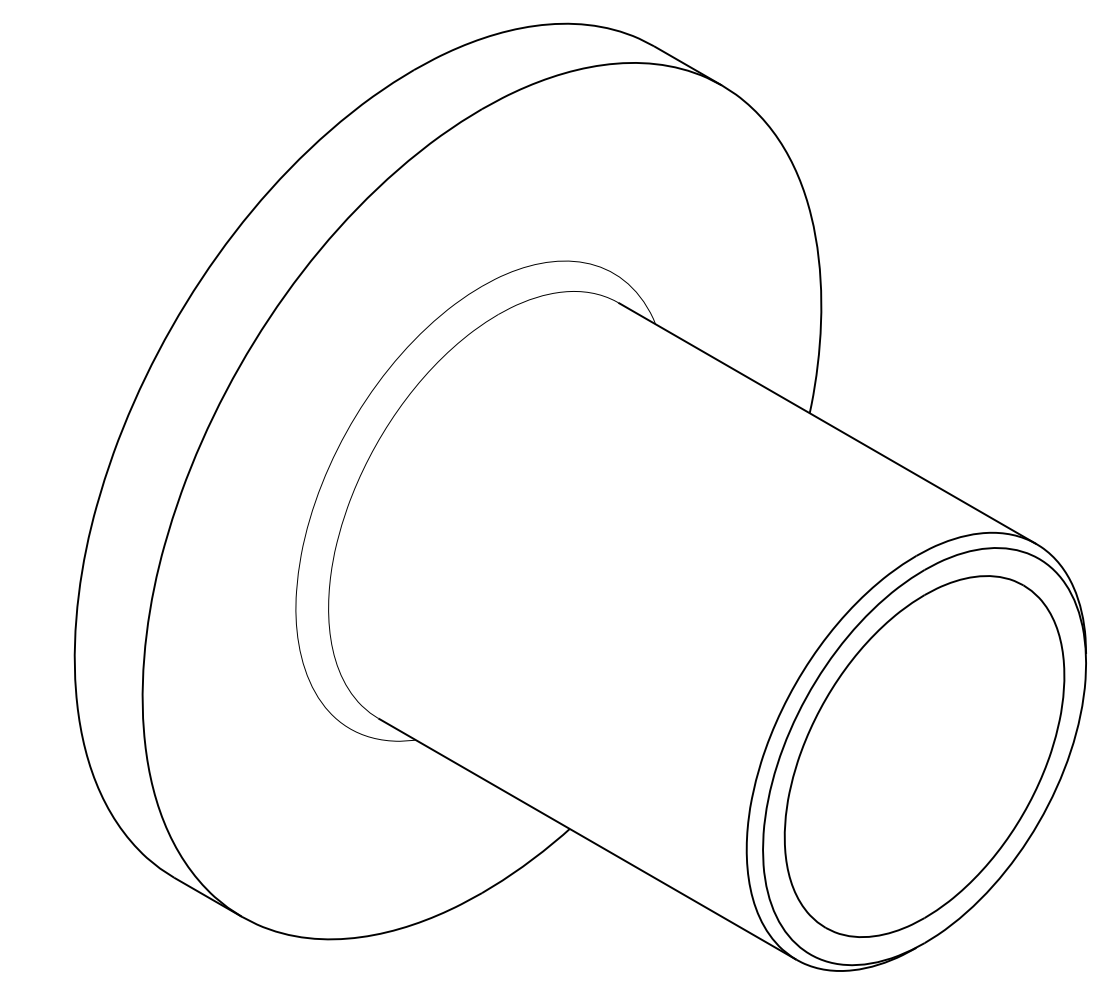
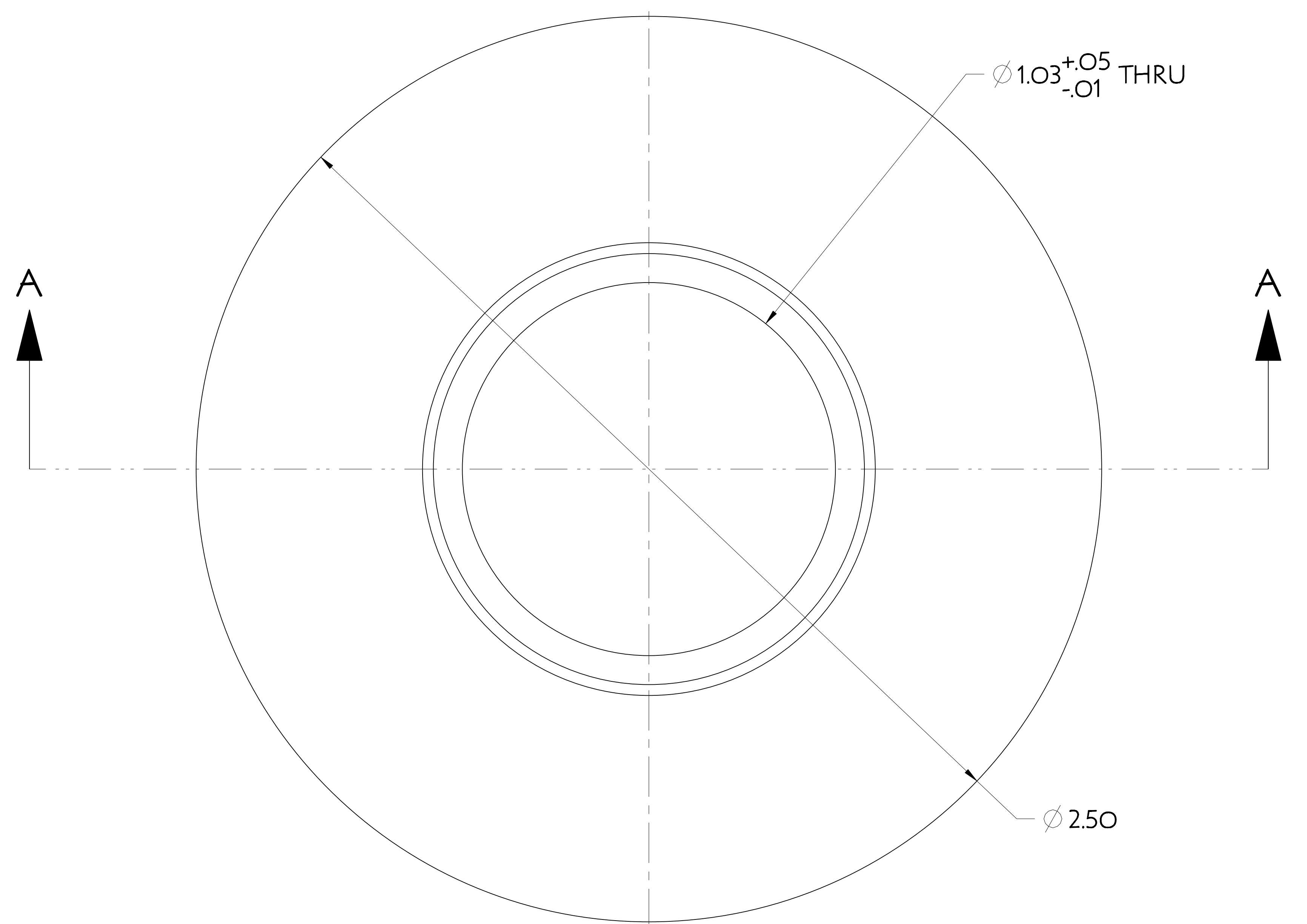
3 REQUIRED

FOR NOTES AND BILL OF MATERIAL SEE SHEET 1

COMPUTER GENERATED DRAWING MANUAL CHANGES NOT PERMITTED Pro E DO NOT VERIFY INFORMATION BY SCALING DRAWING	CENTRAL FILES:	PRINCETON PLASMA PHYSICS LABORATORY NATIONAL COMPACT STELLARATOR EXPERIMENT	
	UNLESS OTHERWISE SPECIFIED	STELLARATOR CORE BASE SUPPORT STRUCTURE OUTER COLUMN UPPER SUPPORT ASSEMBLY	
WEIGHT 2.0 lbs	DIMENSIONS ARE IN INCHES MACHINE SURFACES BREAK SHARP EDGES .005/.020	DSN: T. CRUICKSHANK	DRAWING NO:
MODEL NAME SE172-219-6	TOLERANCES NON-CUMULATIVE DECIMAL-INCH FRACTIONS .X ±.100 0°-120° ±.100 .XX ±.030 12°-72° ±.100 .XXX ±.005 72°-120° ±.100 ANGULAR ±.0°-15° OVER 120° ±.100	CHK: ENGR: F. DAHLGREN	SE172-219
RELEASE LEVEL: WIP DWG VERSION NO: 1	WELDING ENGINEER	SUPV:	SHEET 4 OF 6 REV B, 2

NCSX-SE172-219

NO.	REVISION	BY	CH	SUP	APPROVED	DATE



SECTION A-A
SCALE 5.000

5 OUTER SUPPORT COLUMN INSULATOR BUSHING

6 REQUIRED

FOR NOTES AND BILL OF MATERIAL SEE SHEET 1

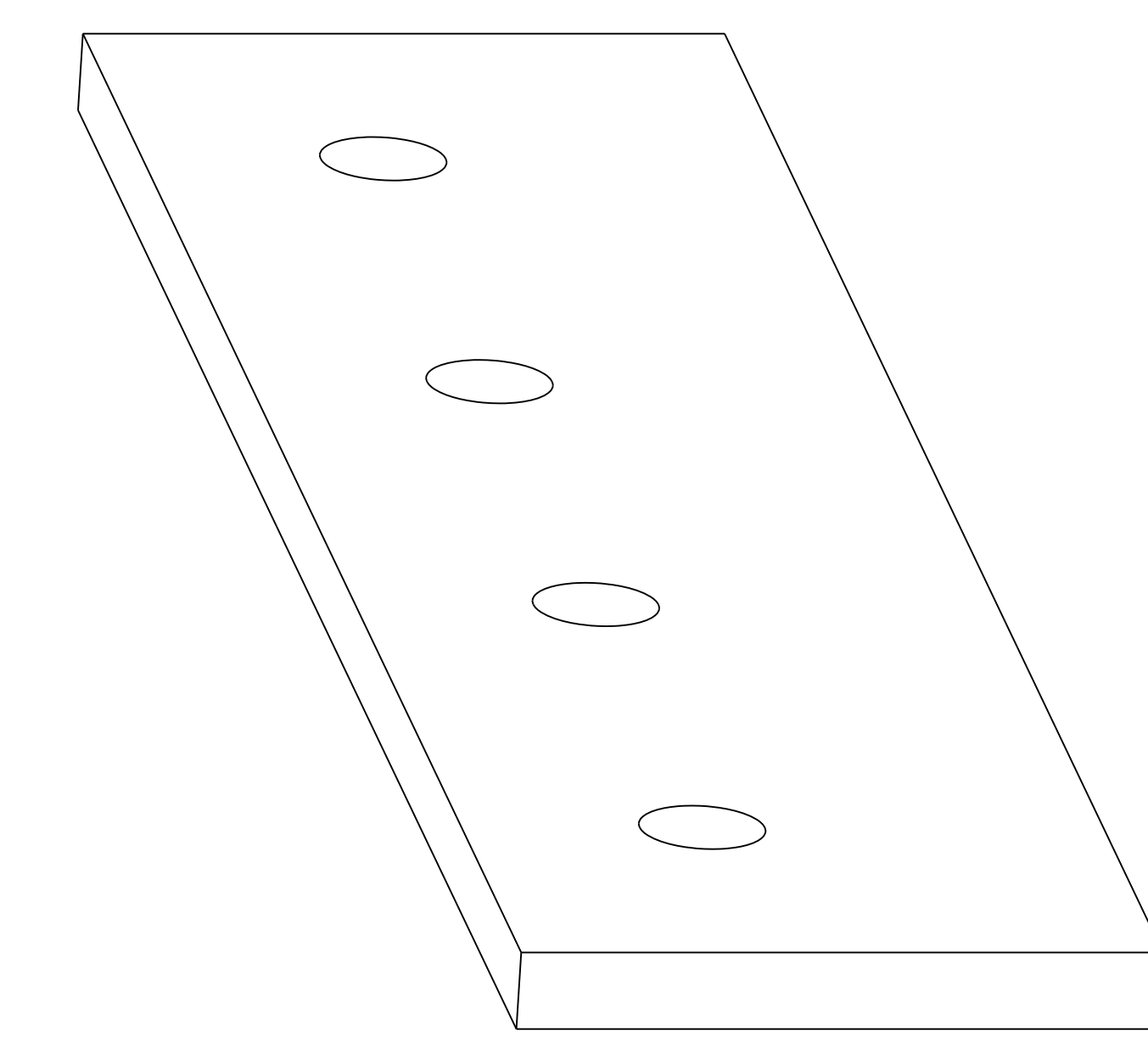
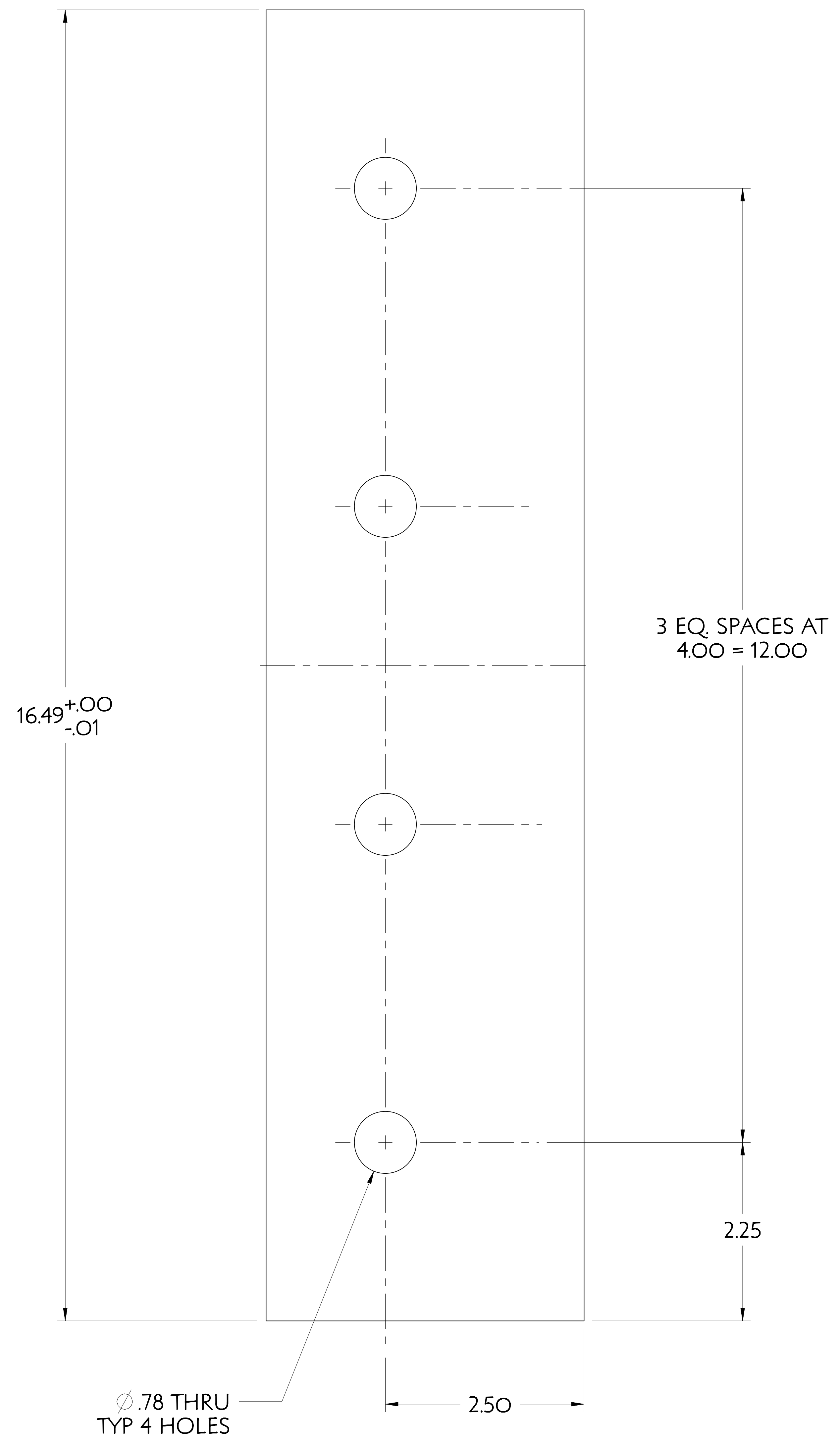
RELEASE LEVEL: WIP
DWG VERSION NO: 2

WEIGHT	0.1 lbs
MODEL NAME	SE172-219-6
WELDING ENGINEER	

COMPUTER GENERATED DRAWING MANUAL CHANGES NOT PERMITTED Pro E	CENTRAL FILES: UNLESS OTHERWISE SPECIFIED	PRINCETON PLASMA PHYSICS LABORATORY NATIONAL COMPACT STELLARATOR EXPERIMENT
DO NOT VERIFY INFORMATION BY SCALING DRAWING	DIMENSIONS ARE IN INCHES MACHINE SURFACES BREAK SHARP EDGES .005/.020	STELLARATOR CORE BASE SUPPORT STRUCTURE OUTER COLUMN UPPER SUPPORT ASSEMBLY
NEXT ASSEMBLY	TOLERANCES NON-CUMULATIVE DECIMAL-INCH FRACTIONS .XX $\pm .005$ 12" - 12" $\pm .010$.XXX $\pm .005$ 12" - 120" $\pm .010$ ANGULAR $\pm .05^\circ$ OVER 120" $\pm .10^\circ$	DSN: T. CRUICKSHANK CHK: ENGR: F. DAHLGREN SUPV: DRAWING NO: SE172-219
		SHEET 5 OF 6 REV B, 2

NCSX-SE172-219

NO.	REVISION	BY	CH	SUP	APPROVED	DATE



6 SLIDING BASE RETAINER PLATE

12 REQUIRED

FOR NOTES AND BILL OF MATERIAL SEE SHEET 1

RELEASE LEVEL: WIP
DWG VERSION NO: 4

WEIGHT	9.3 lbs
MODEL NAME	SE172-245-1
WELDING ENGINEER	

COMPUTER GENERATED DRAWING MANUAL CHANGES NOT PERMITTED Pro E	CENTRAL FILES: UNLESS OTHERWISE SPECIFIED	PRINCETON PLASMA PHYSICS LABORATORY NATIONAL COMPACT STELLARATOR EXPERIMENT	
DO NOT VERIFY INFORMATION BY SCALING DRAWING	DIMENSIONS ARE IN INCHES MACHINE SURFACES BREAK SHARP EDGES .005/.020	STELLARATOR CORE BASE SUPPORT STRUCTURE OUTER COLUMN UPPER SUPPORT ASSEMBLY	
NEXT ASSEMBLY	TOLERANCES NON-CUMULATIVE DECIMAL-INCH FRACTIONS .X ±.000 0°-12° ±.004 .XX ±.000 12°-72° ±.006 .XXX ±.005 72°-120° ±.014 ANGULAR ±.0°-15° OVER 120° ±.012	DSN: T. CRUICKSHANK ENGR: F. DAHLGREN SUPV:	DRAWING NO: SE172-219 SHEET 6 OF 6 REV B, 2

NCSX-SE172-219