

1. DRAWINGS PREPARED IN ACCORDANCE WITH ASME Y14.100-2000
2. INTERPRET DIMENSIONS & TOLERANCES PER ASME Y14.5-1994.
3. DIMENSIONS ARE IN INCHES.
4. SEE SPECIFICATION NCSX-CSPEC-XXX-XX-XX FOR ADDITIONAL INFORMATION AND/OR MATERIAL REQUIREMENTS.

**NOTE:**  
WORK THIS DRAWING WITH DRAWING SE172-201

**3 ASSEMBLIES REQUIRED**

PART NO.	DRAWING NO	NOMENCLATURE OR DESCRIPTION	MATERIAL	QTY	RECD
18	92198A920	1-8 UNC X 4" LG HEX HD BOLT MCMASTER CARR #92198A920	18-8 STN STL	12	
17	NS151772	1-8 UNC X 2 HEX HEAD BOLT	18-8 STN STL	6	
16	92196A845	3/4-10 X 2 1/2 LG SOC HD CAP SCREW MCMASTER CARR #92196A845	18-8 STN STL	8	
15	150776	3/4-10 UNC X 2 LG HEX SOC HD CAP SCREW	STN STL	8	
14	NS151345	1" SPLIT LOCK WASHER	STN STL	14	
13	NS151342	1 FLAT WASHER	STN STL	4	
12	151335	3/4 SPLIT LOCK WASHER	STN STL	16	
11	SE172-253	MACHINE BASE INNER SUPPORT COLUMN WELDMENT - A TO A JOINT	STN STL	1	
10	SE172-250	SUPPORT COLUMN SPHERICAL JOINT ASSEMBLY		1	
9	SE172-247	INNER SUPPORT PEDESTAL WELDMENT		1	
8	SE172-244-4	BASE SUPPORT INNER SUPPORT COLUMN INSULATOR BUSHING	G-10	4	
7	SE172-244-3	INNER SUPPORT COLUMN INSULATOR	G-10	2	
6	SE172-244-1	PERIOD SUPPORT PEDESTAL BOTTOM PLATE	304L STN STL	1	
5	SE172-244	INNER COLUMN SUPPORT ASSEMBLY - A-A JOINT		1	
4	SE172-219-6	SLIDING BASE RETAINER PLATE	304L ST STL	2	
3	SE172-219-3	SUPPORT COLUMN JOINT ASSEMBLY SIDE PAD	PTFE	2	
2	SE172-219-2	SUPPORT COLUMN JOINT ASSEMBLY BASE PAD	304L ST STL/PTFE	1	
1	SE172-219-1	SUPPORT COLUMN JOINT ASSEMBLY RETAINING BRACKET	304L ST STL	2	

PARTS LIST

COMPUTER GENERATED DRAWING MANUAL CHANGES NOT PERMITTED	CENTRAL FILES: UNLESS OTHERWISE SPECIFIED	PRINCETON PLASMA PHYSICS LABORATORY PRINCETON, NJ 08542	
DO NOT VERIFY INFORMATION BY SCALING DRAWING	TOLERANCES NON-CUMULATIVE DECIMAL-INCH FRACTIONS XXX +/- .005 12" - 120" +/- .124 ANGULAR +/- .05 15" OVER 120" +/- .124	DSN: T. CRUICKSHANK	DRAWING NO: <b>SE172-244</b>
WEIGHT 1415.9 lbs	MODEL NAME SE172-244	CHK: ENGR: F. DAHLGREN	SHEET 1 OF 4
RELEASE LEVEL: WIP DWG VERSION NO: 15	WELDING ENGINEER	SUPV:	REV D, 2

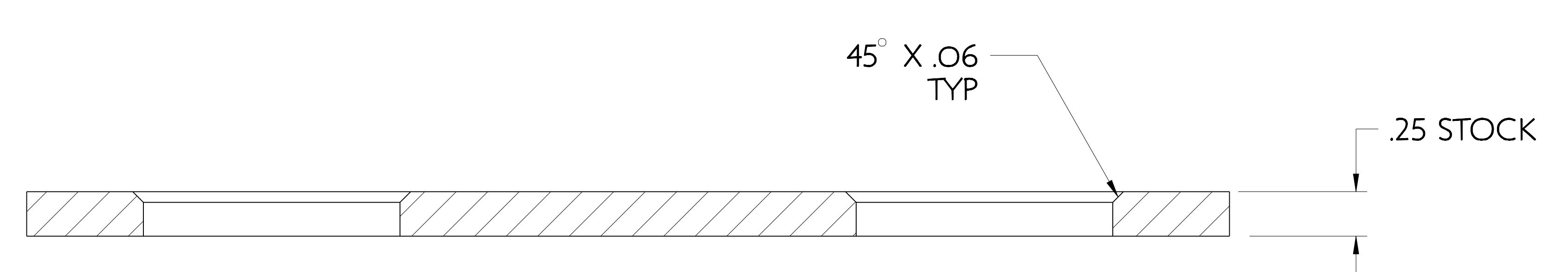
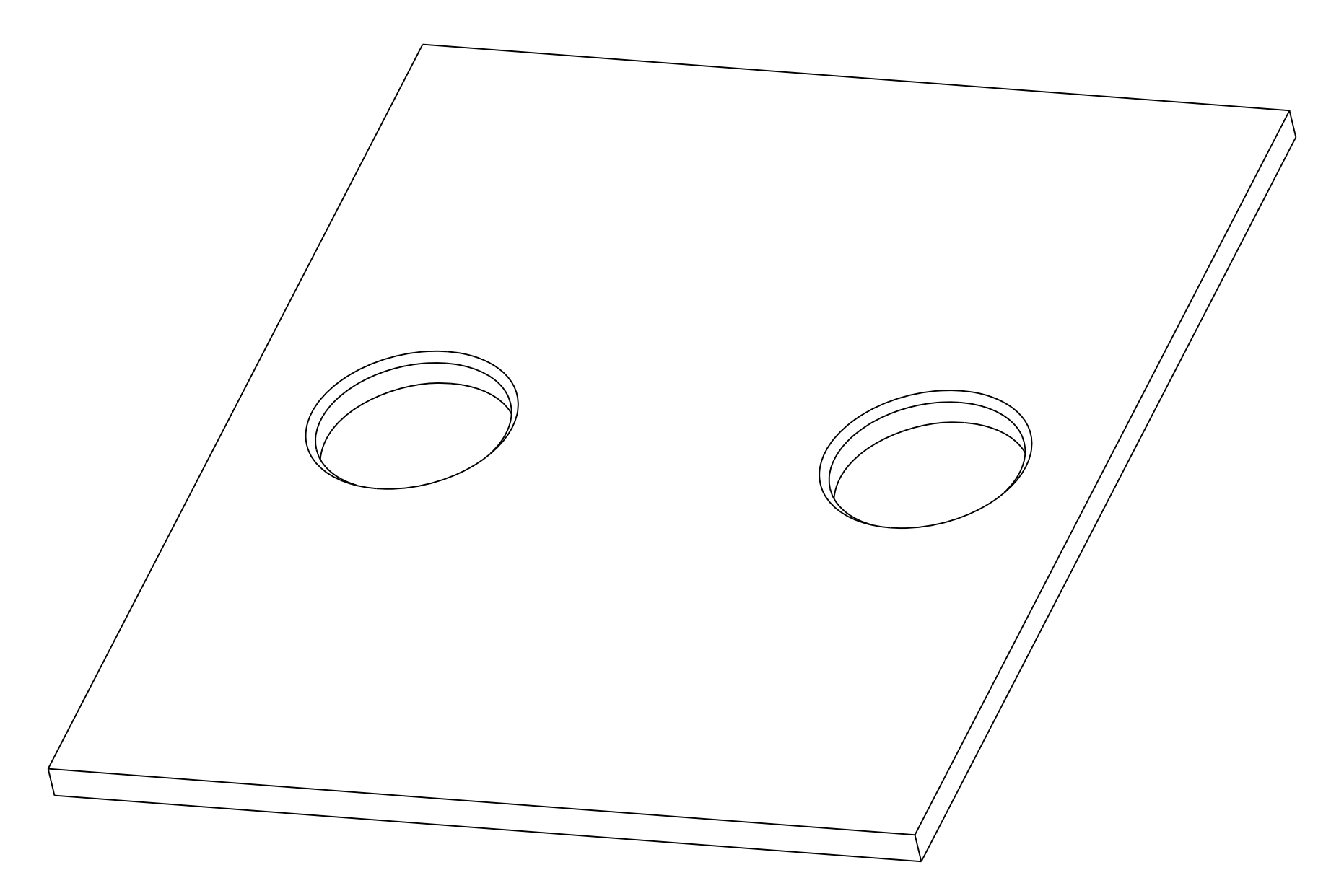
NCSX-SE172-244



NO.	REVISION	BY	CH	SUP	APPROVED	DATE



Ø1.44 THRU  
TYP 2 HOLES



SECTION A-A

INNER SUPPORT COLUMN INSULATOR  
PART NO. SE172-244-3

**6 REQUIRED**

FOR NOTES AND BILL OF MATERIAL SEE SHEET 1

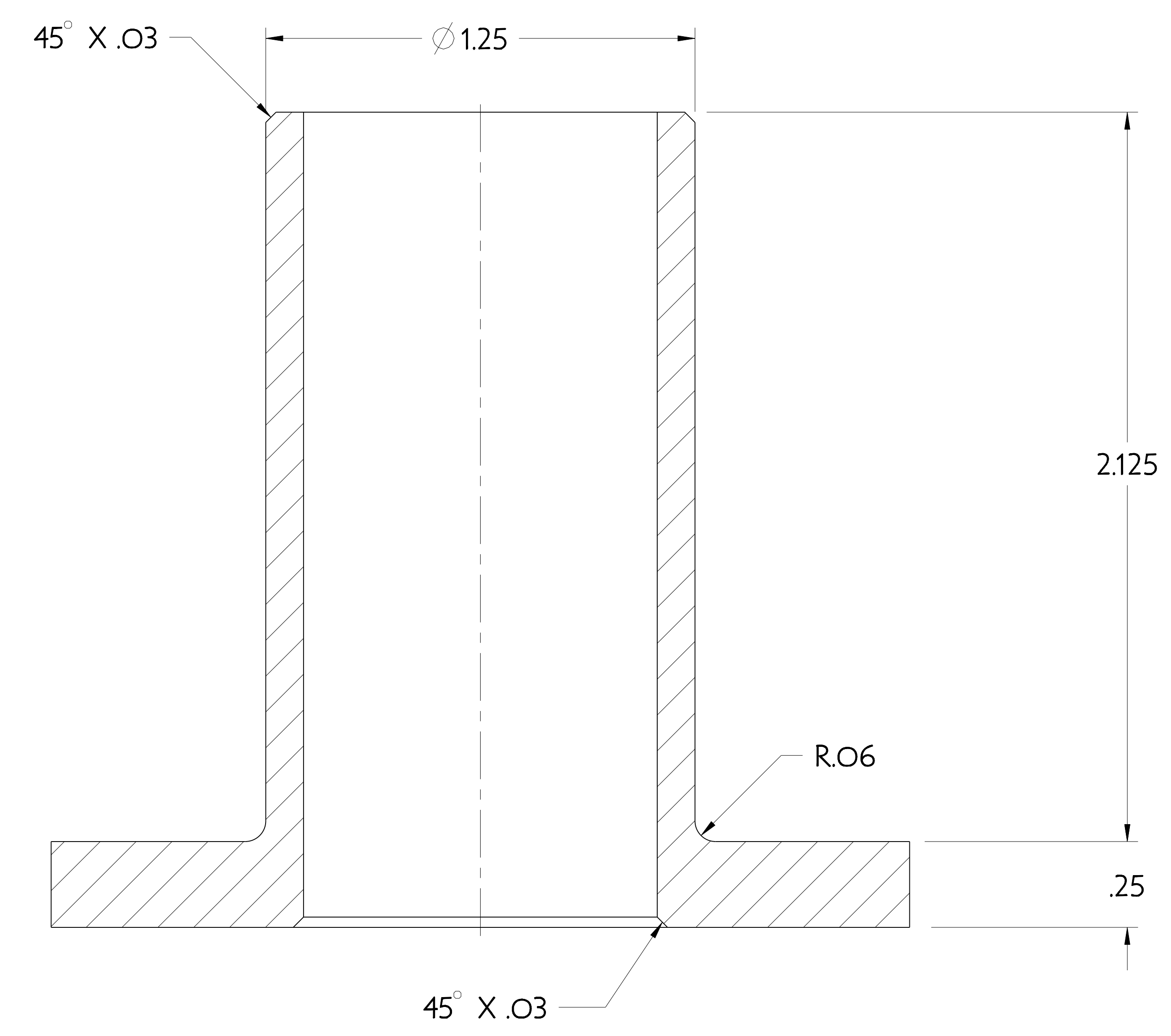
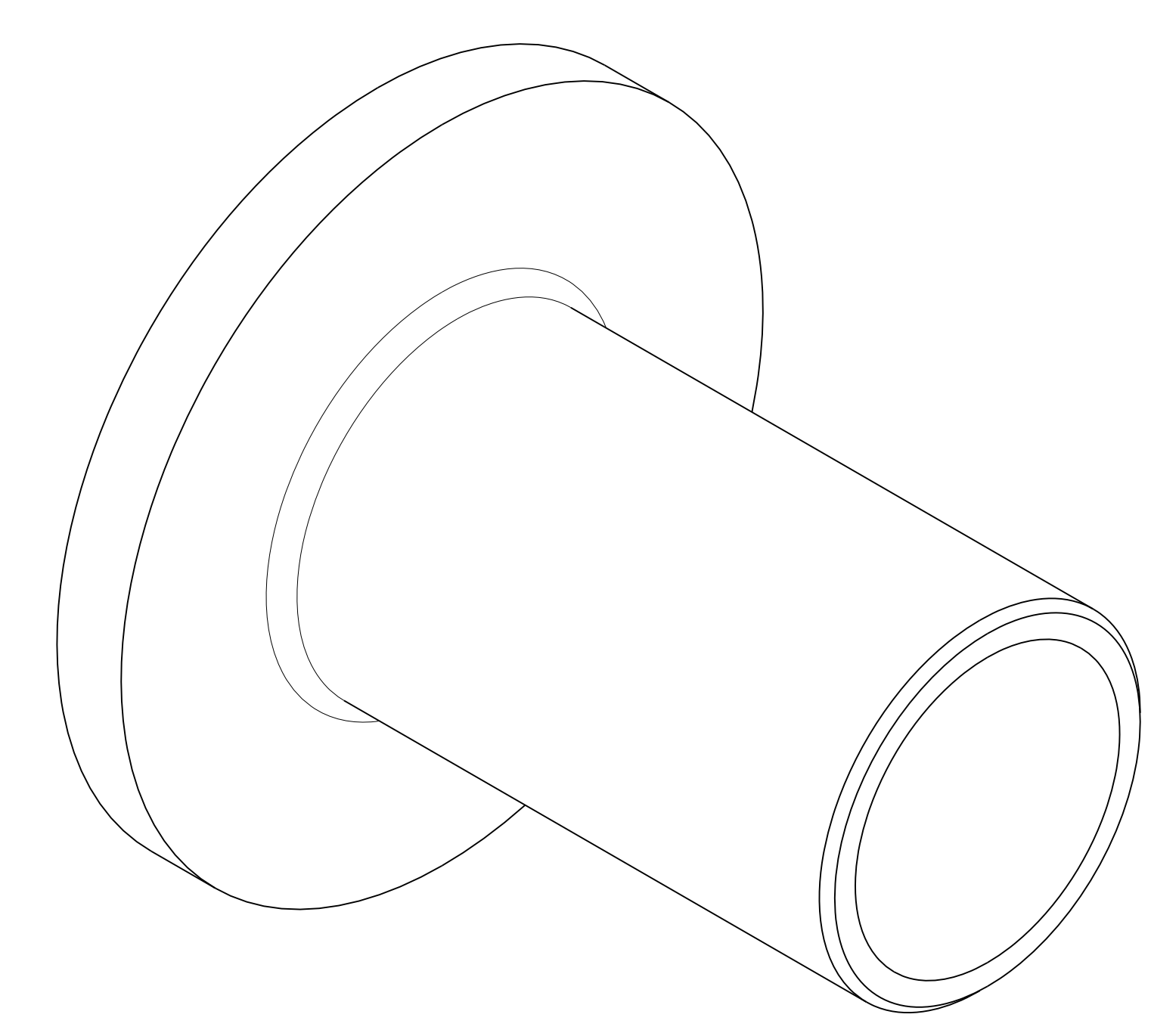
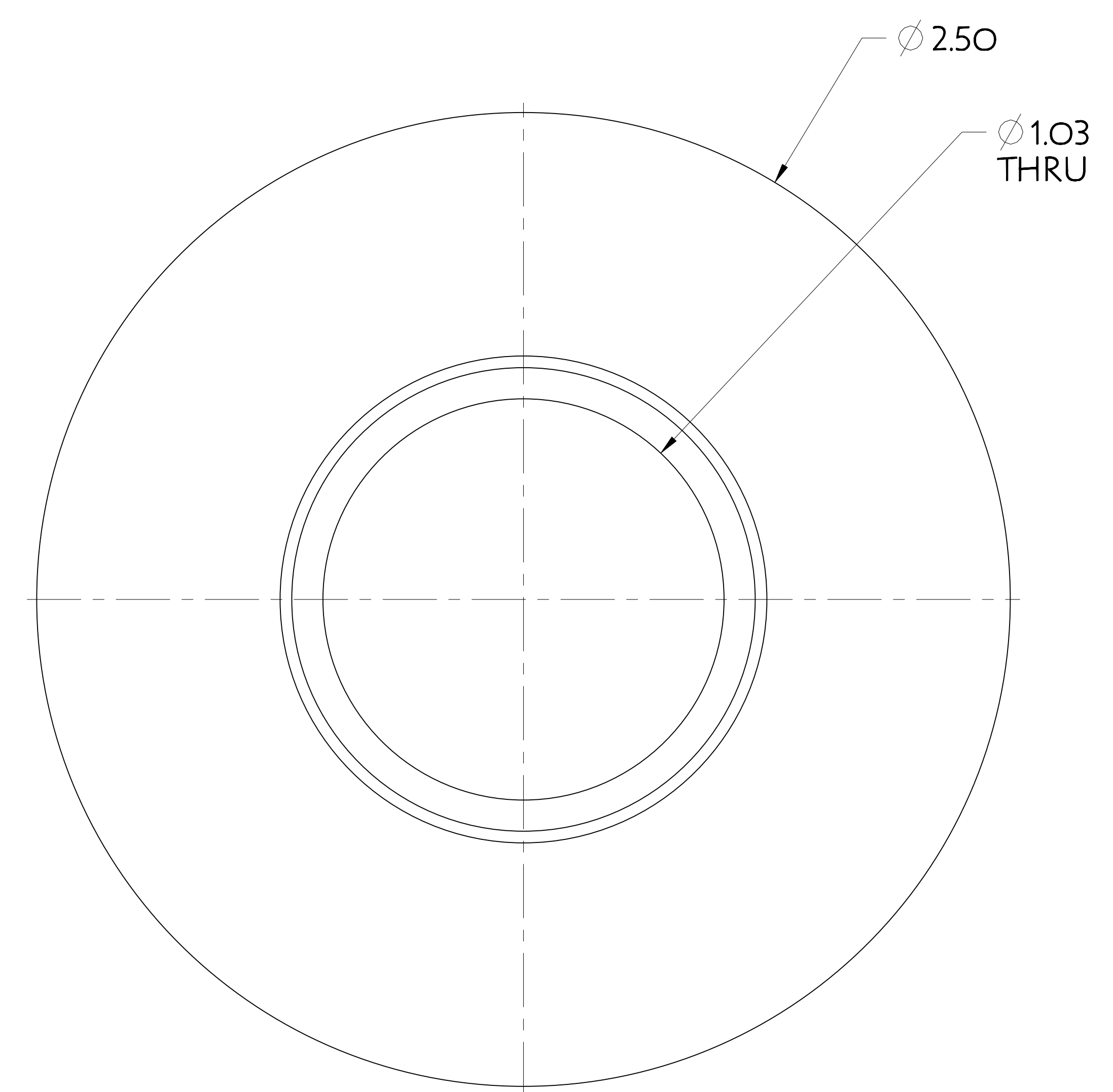
RELEASE LEVEL: WIP  
DWG VERSION NO: 4

WEIGHT	0.9 lbs
MODEL NAME	SE172-244-4
WELDING ENGINEER	

COMPUTER GENERATED DRAWING MANUAL CHANGES NOT PERMITTED Pro E	CENTRAL FILES: UNLESS OTHERWISE SPECIFIED	PRINCETON PLASMA PHYSICS LABORATORY NATIONAL COMPACT STELLARATOR EXPERIMENT	
DO NOT VERIFY INFORMATION BY SCALING DRAWING	DIMENSIONS ARE IN INCHES MACHINE SURFACES BREAK SHARP EDGES .005/.020	STELLARATOR CORE BASE SUPPORT STRUCTURE INNER COLUMN UPPER SUPPORT ASSEMBLY	
NEXT ASSEMBLY	TOLERANCES NON-CUMULATIVE DECIMAL-INCH FRACTIONS .X ±.100 0°-12° ±.100 .XX ±.030 12°-72° ±.100 .XXX ±.005 72°-120° ±.100 ANGULAR ±.0°-15° OVER 120° ±.100	DSN: T. CRUCKSHANK ENGR: F. DAHLGREN SUPV:	DRAWING NO: <b>SE172-244</b> SHEET 3 OF 4 REV B, 2

NCSX-SE172-244

NO.	REVISION	BY	CH	SUP	APPROVED	DATE



SECTION A-A

BASE SUPPORT INNER SUPPORT COLUMN INSULATOR BUSHING  
PART NO. SE172-244-4

12 REQUIRED

FOR NOTES AND BILL OF MATERIAL SEE SHEET 1

RELEASE LEVEL: WIP  
DWG VERSION NO: 3

WEIGHT	0.1 lbs
MODEL NAME	SE172-244-4
WELDING ENGINEER	

COMPUTER GENERATED DRAWING MANUAL CHANGES NOT PERMITTED Pro E	CENTRAL FILES: UNLESS OTHERWISE SPECIFIED	PRINCETON PLASMA PHYSICS LABORATORY PRINCETON UNIVERSITY, NJ	
DO NOT VERIFY INFORMATION BY SCALING DRAWING	DIMENSIONS ARE IN INCHES MACHINE SURFACES BREAK SHARP EDGES .005/.020	NATIONAL COMPACT STELLARATOR EXPERIMENT	
NEXT ASSEMBLY	TOLERANCES NON-CUMULATIVE DECIMAL-INCH FRACTIONS .XX $\pm .030$ 12 $^\circ$ -12 $^\circ$ $\pm .118$ .XXX $\pm .005$ 12 $^\circ$ -120 $^\circ$ $\pm .114$ ANGULAR $\pm .0^\circ$ -15 $^\circ$ OVER 120 $^\circ$ $\pm .112$	DSN: T. CRICKSHANK ENGR: F. DAHLGREN SUPV:	DRAWING NO: <b>SE172-244</b> SHEET 4 OF 4 REV B, 2

NCSX-SE172-244