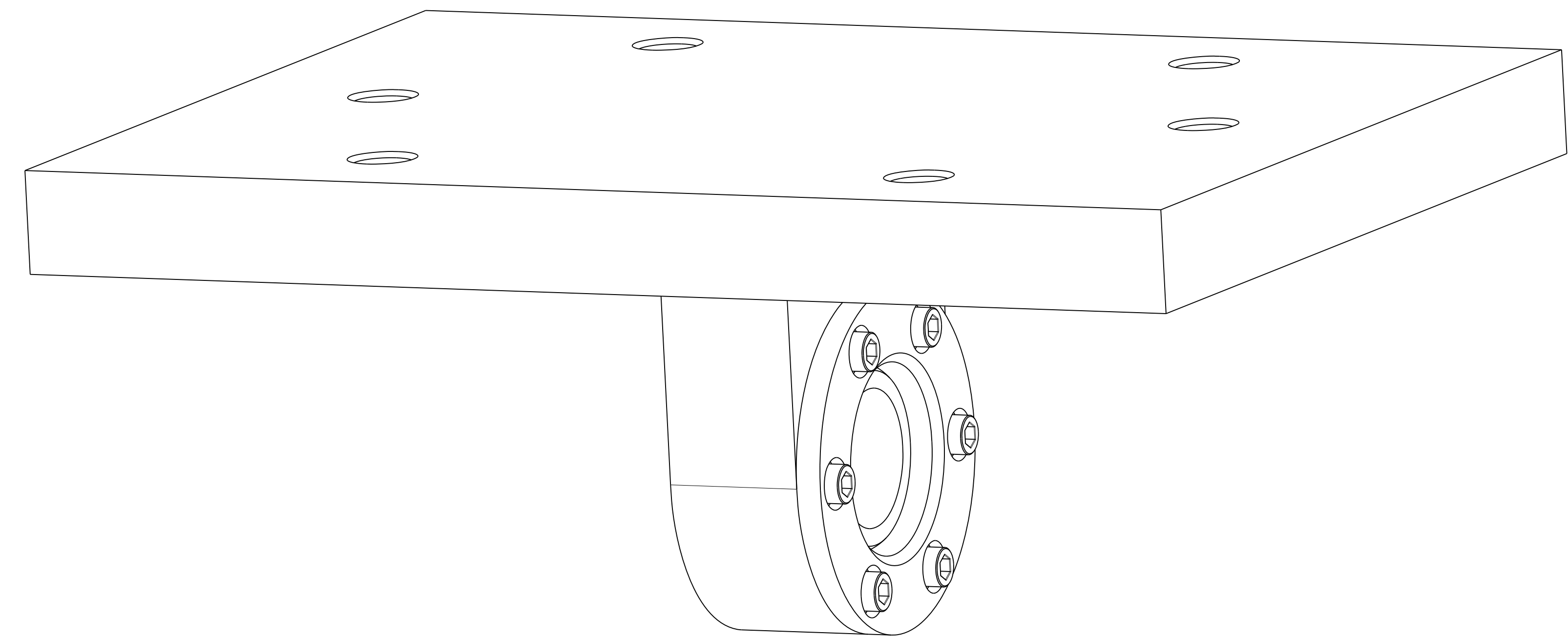
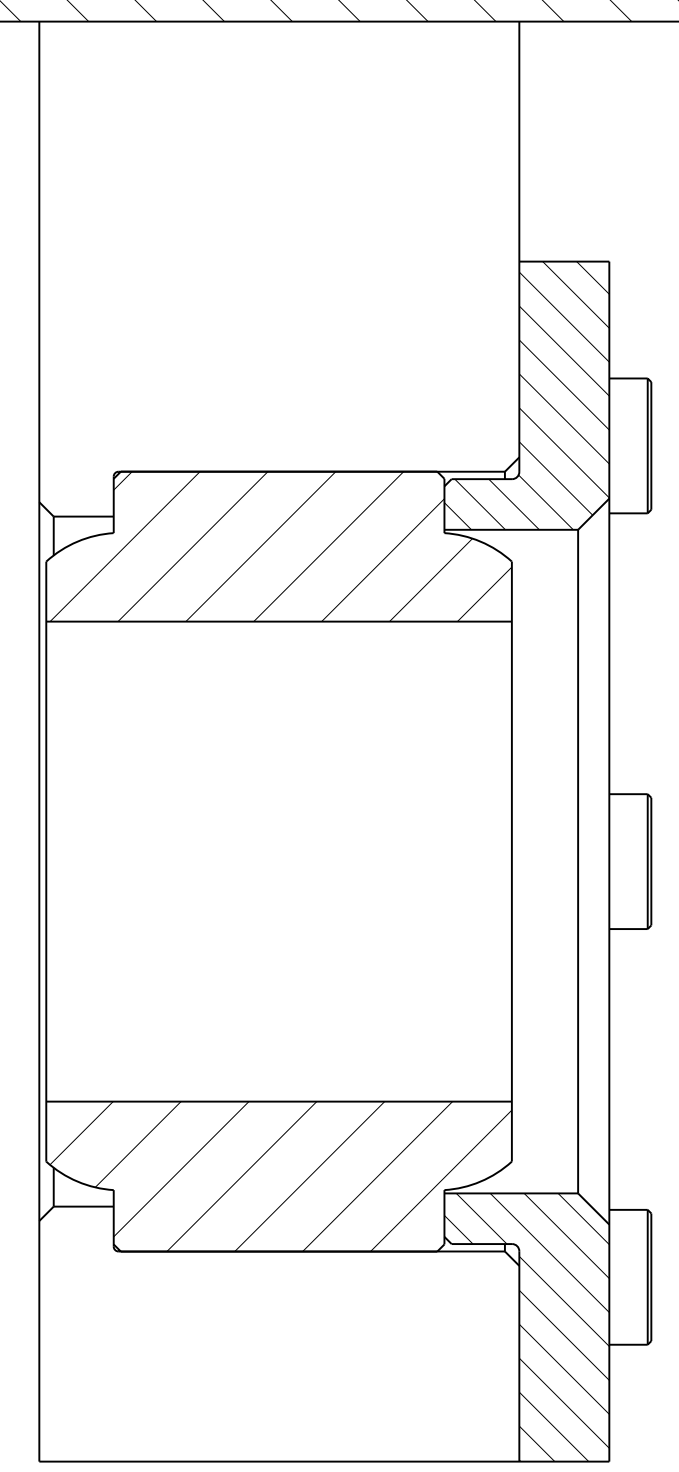
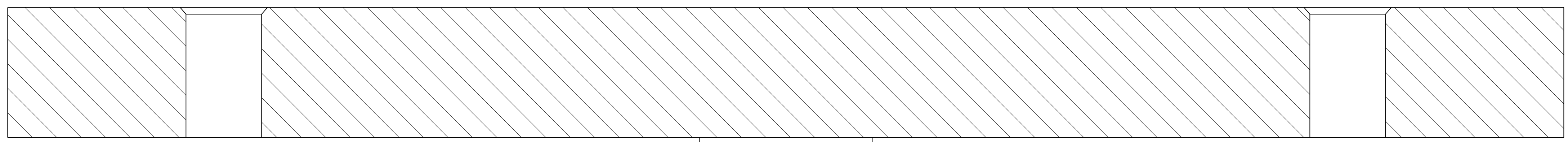
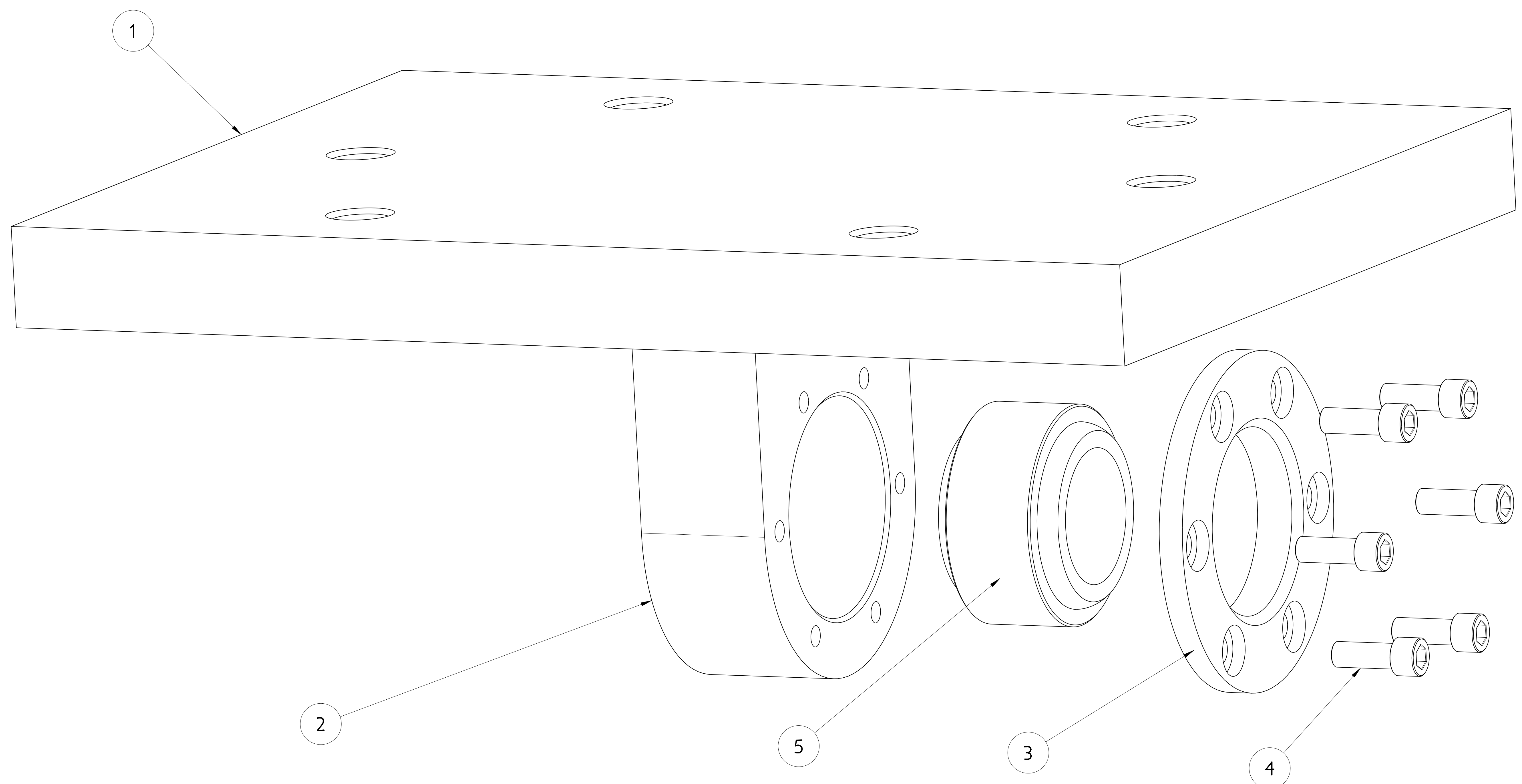


NO.	REVISION	BY	CH	SUP	APPROVED	DATE



REFERENCE SECTION



1. DRAWINGS PREPARED IN ACCORDANCE WITH ASME Y14.100-2000
2. INTERPRET DIMENSIONS & TOLERANCES PER ASME Y14.5-1994.
3. DIMENSIONS ARE IN INCHES.
4. SEE SPECIFICATION NCSX-CSPEC-XXX-XX-XX FOR ADDITIONAL INFORMATION AND/OR MATERIAL REQUIREMENTS.
5. WELDING SHALL BE PERFORMED IN ACCORDANCE WITH THE REQUIREMENTS OF AWS XXX AND/OR PPPL PROCEDURE ENG-037. VISUAL WELD INSPECTION SHALL BE PERFORMED IN ACCORDANCE WITH THE ACCEPTANCE CRITERIA OF AWS XXX.
6. ALL MACHINING TO BE PERFORMED AFTER ALL WELDS ARE COMPLETE.

**6 ASSEMBLIES REQUIRED**

PART NO.	DRAWING NO	NOMENCLATURE OR DESCRIPTION	MATERIAL	QTY	RECD
5	SWPBLFR-32-003	2" BORE X 3.75 OD SPHERICAL BEARING SOUTHWEST PRODUCTS	MONEL/INCONEL	1	
4	NS150741	3/8-16 UNC x 1 LG HEX SOC HD CAP SCREW	INCONEL 718	6	
3	SE172-245-3	SUPPORT COLUMN JOINT FLANGE	INCONEL 718	1	
2	SE172-245-2	SUPPORT COLUMN JOINT SPHERICAL BEARING HOUSING	INCONEL 718	1	
1	SE172-245-1	SUPPORT COLUMN JOINT SPHERICAL BEARING HOUSING BASE PLATE	INCONEL 718	1	

PARTS LIST

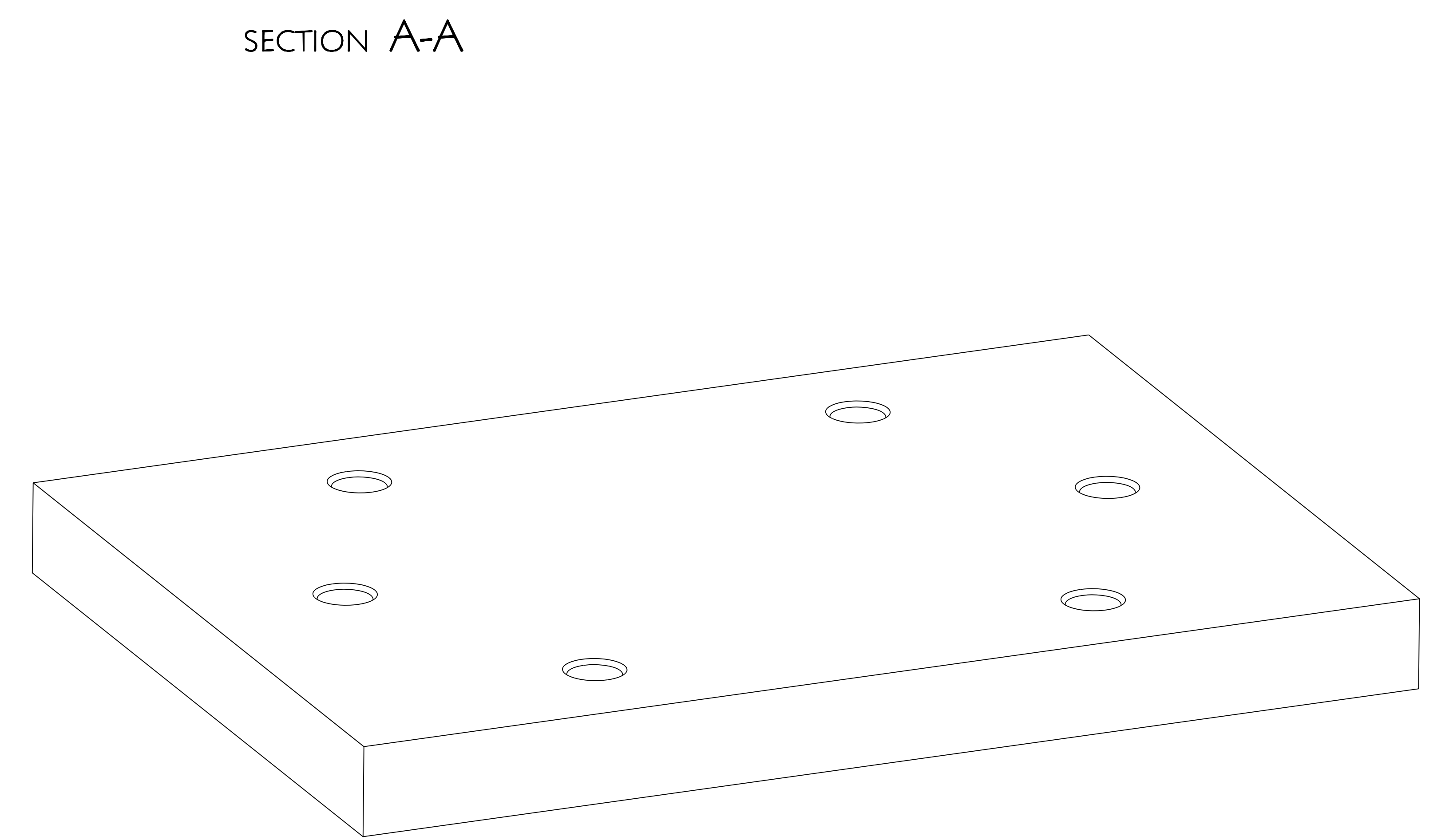
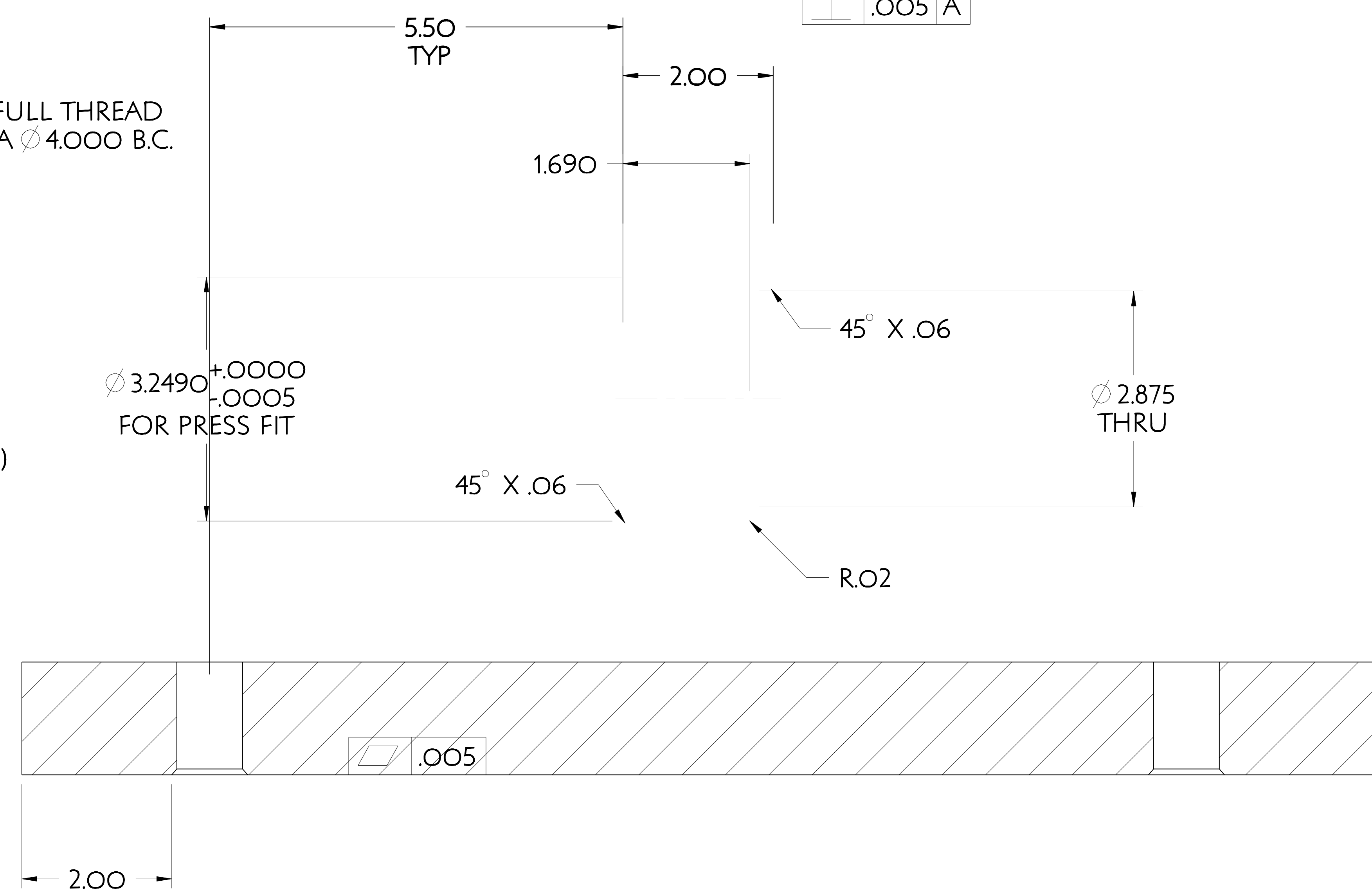
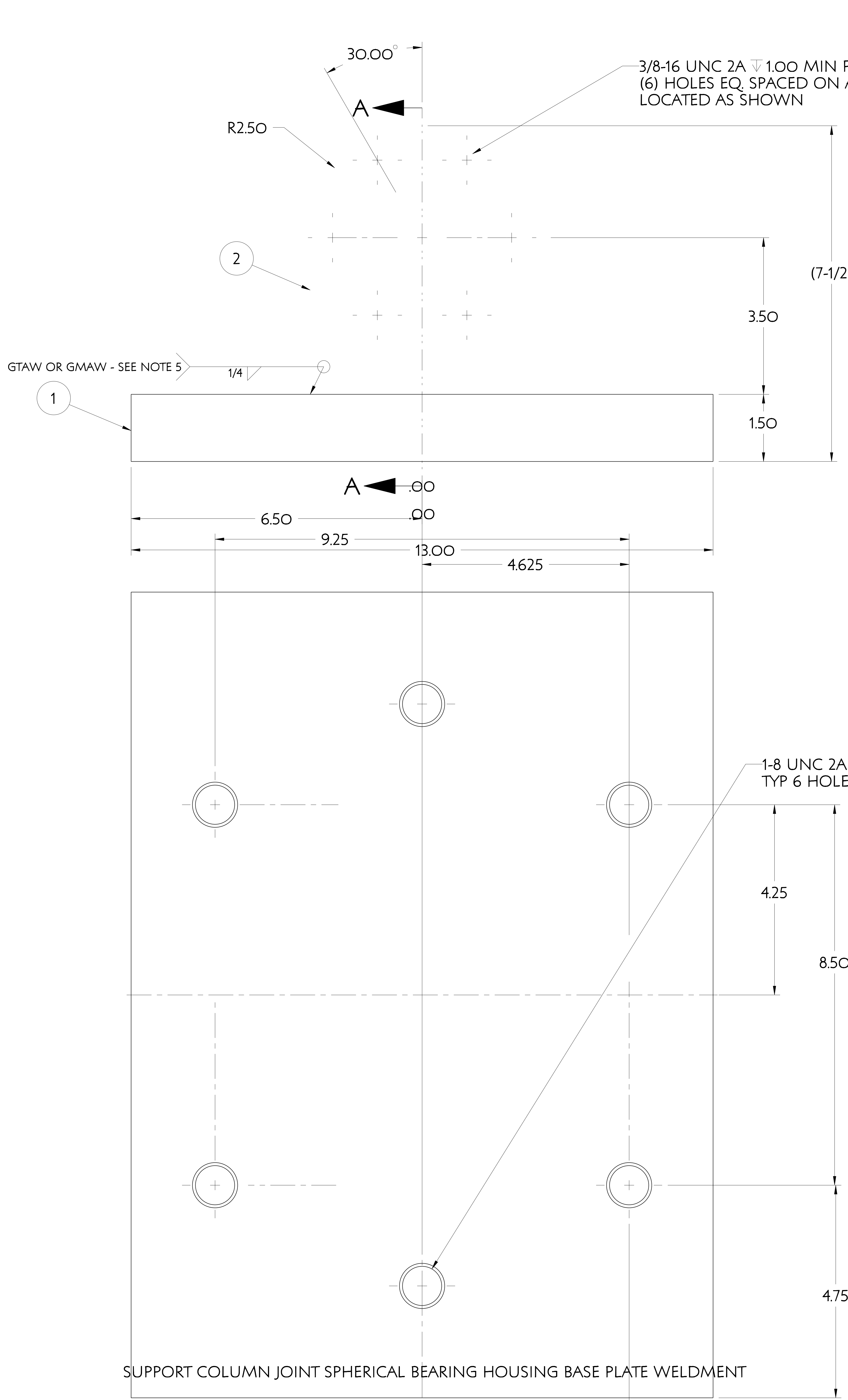
COMPUTER GENERATED DRAWING MANUAL CHANGES NOT PERMITTED	CENTRAL FILES: UNLESS OTHERWISE SPECIFIED	PRINCETON PLASMA PHYSICS LABORATORY PRINCETON, UNIVERSITY, TX	
Pro E	DIMENSIONS ARE IN INCHES MACHINE SURFACES BREAK SHARP EDGES .005/.020	NATIONAL COMPACT STELLARATOR EXPERIMENT	
DO NOT VERIFY INFORMATION BY SCALING DRAWING	TOLERANCES NON-CUMULATIVE	STELLARATOR CORE BASE SUPPORT STRUCTURE	DRAWING NO:
	DECIMAL-INCH FRACTIONS	SUPPORT COLUMN JOINT SPHERICAL BEARING HOUSING ASSEMBLY	SE172-245
NEXT ASSEMBLY	CHK:	ENGR: F. DAHLGREN	SUPV:
WELDING ENGINEER	ANGULAR: ±.15° OVER 120° ±.12°		SHEET 1 OF 3 REV 0

WEIGHT	115.5 lbs
MODEL NAME	SE172-245

RELEASE LEVEL: WIP  
DWG VERSION NO: 6

NCSX-SE172-245

NO.	REVISION	BY	CH	SUP	APPROVED	DATE



**6 REQUIRED**

FOR NOTES AND BILL OF MATERIAL SEE SHEET 1

SUPPORT COLUMN JOINT SPHERICAL BEARING HOUSING BASE PLATE WELDMENT

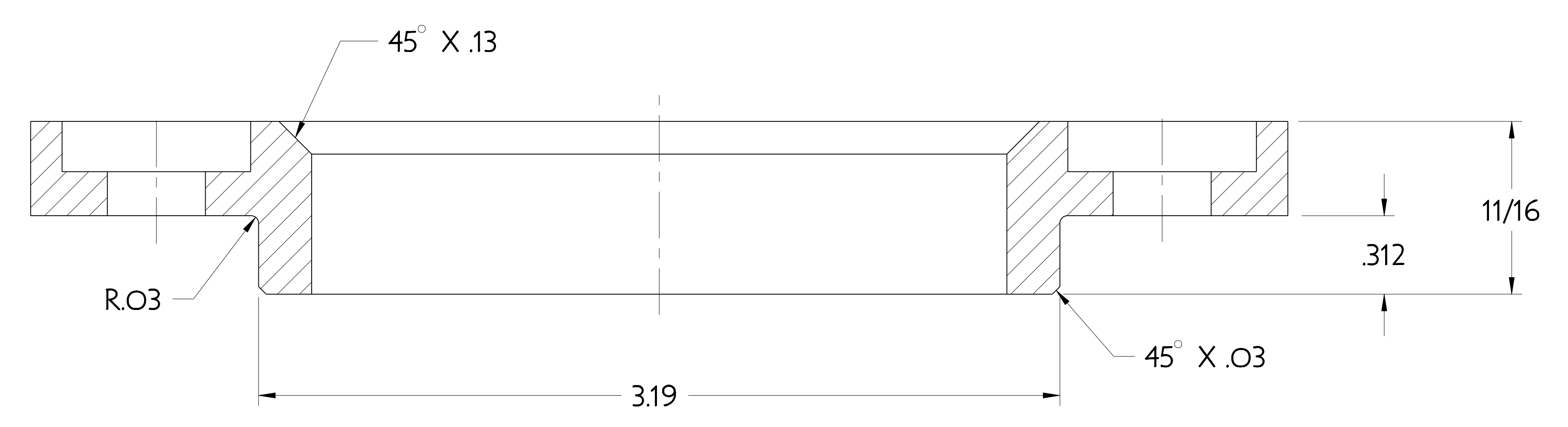
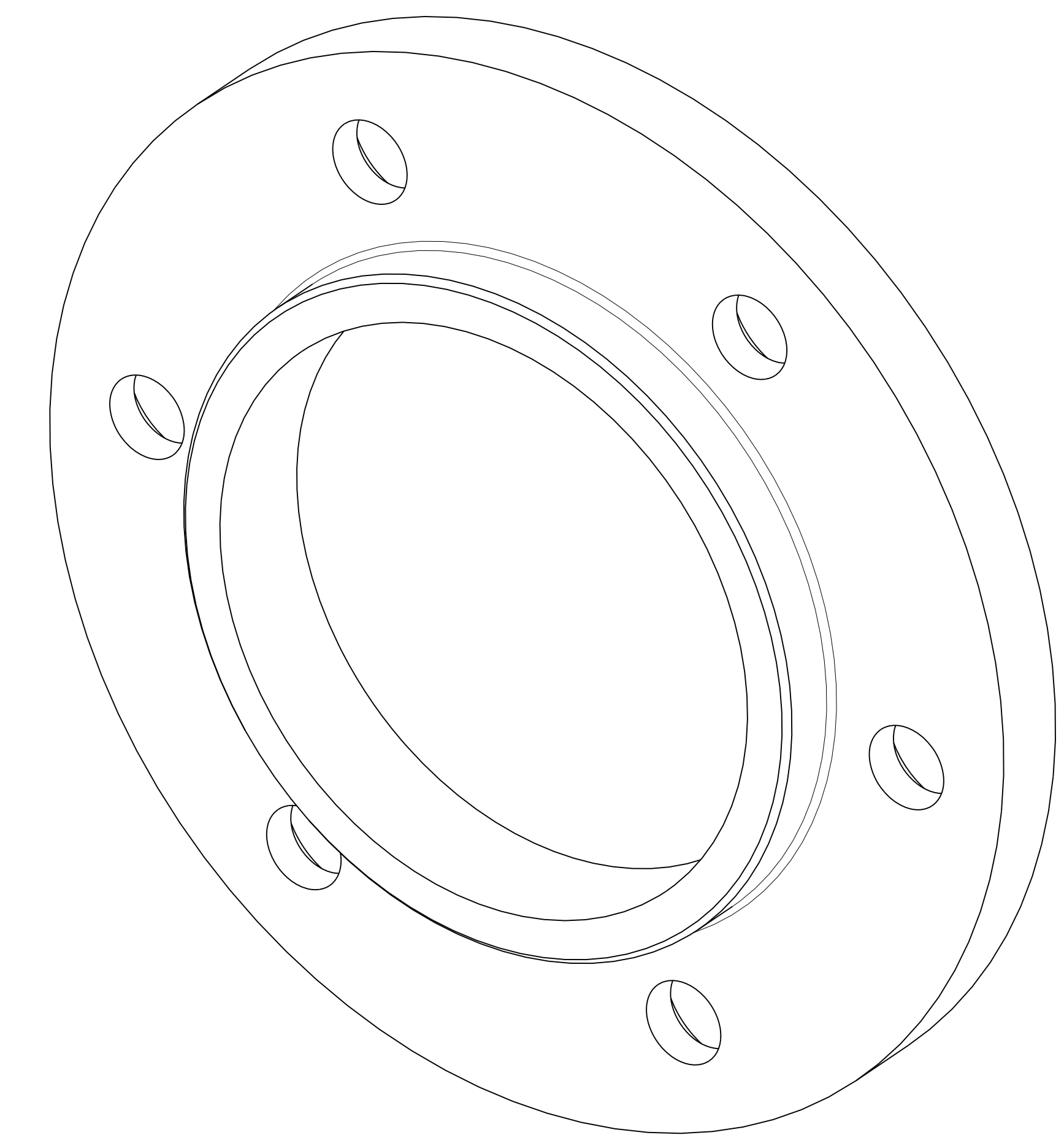
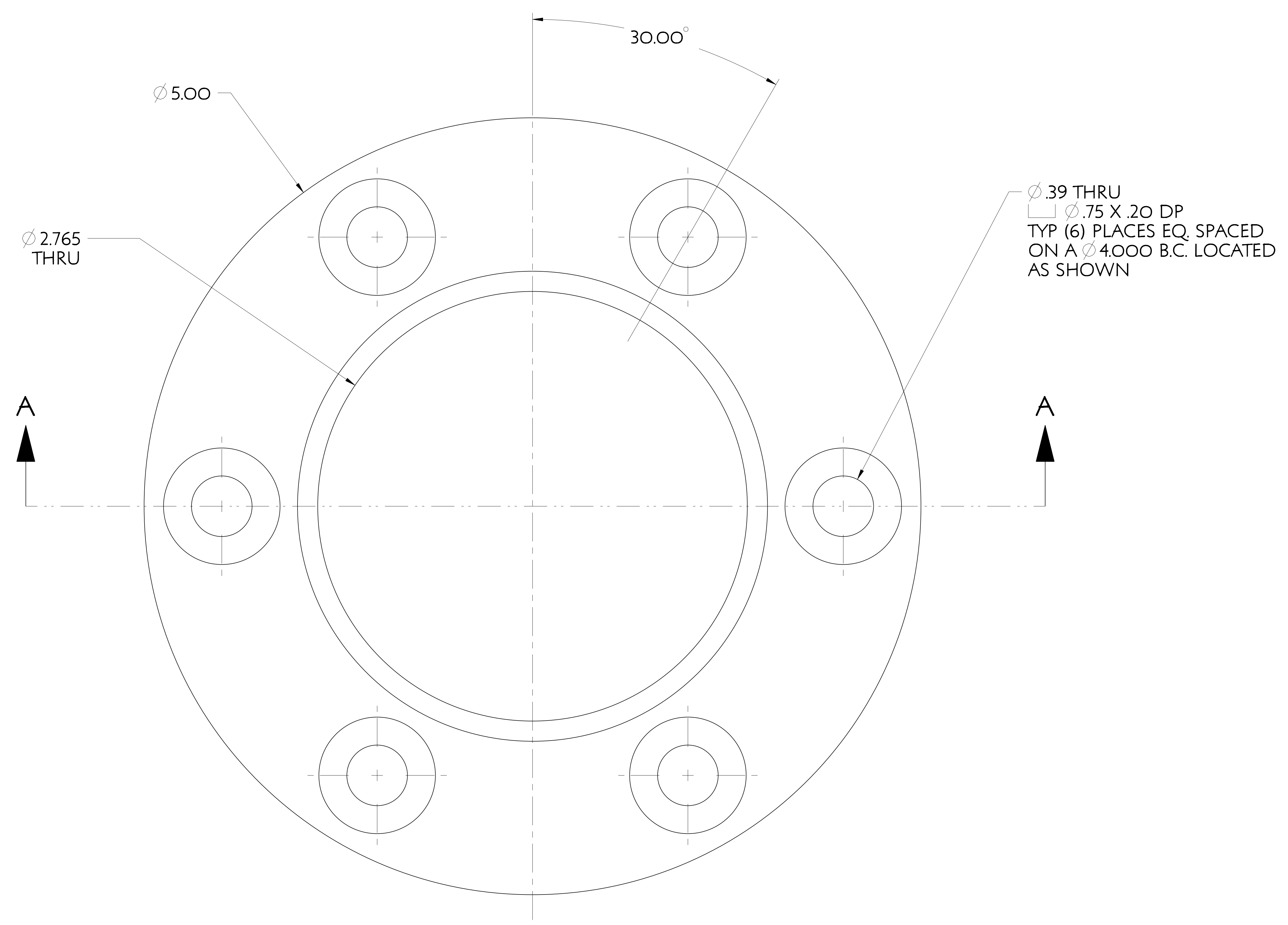
RELEASE LEVEL: WIP  
DWG VERSION NO: 10

WEIGHT	100.2 lbs
MODEL NAME	SE172-245-1
WELDING ENGINEER	

COMPUTER GENERATED DRAWING DRAWING CHANGES NOT PERMITTED Pro E	CENTRAL FILES: UNLESS OTHERWISE SPECIFIED	PRINCETON PLASMA PHYSICS LABORATORY NATIONAL COMPACT STELLARATOR EXPERIMENT	
DO NOT VERIFY INFORMATION BY SCALING DRAWING	DIMENSIONS ARE IN INCHES MACHINE SURFACES BREAK SHARP EDGES .005/.020	STELLARATOR CORE BASE SUPPORT STRUCTURE SUPPORT COLUMN JOINT SPHERICAL BEARING HOUSING ASSEMBLY	
NEXT ASSEMBLY	TOLERANCES NON-CUMULATIVE DECIMAL-INCH FRACTIONS .X ±.000 .XX ±.005 ANGULAR ±.15°	DSN: T. CRUICKSHANK CHK: ENGR: F. DAHLGREN SUPV:	DRAWING NO: <b>SE172-245</b> SHEET 2 OF 3 REV 0.4

NCSX-SE172-245

NO.	REVISION	BY	CH	SUP	APPROVED	DATE



SECTION A-A

3 SUPPORT COLUMN JOINT FLANGE

6 REQUIRED

FOR NOTES AND BILL OF MATERIAL SEE SHEET 1

COMPUTER GENERATED DRAWING MANUAL CHANGES NOT PERMITTED Pro E	CENTRAL FILES:	PRINCETON PLASMA PHYSICS LABORATORY NATIONAL COMPACT STELLARATOR EXPERIMENT	
	UNLESS OTHERWISE SPECIFIED	STELLARATOR CORE BASE SUPPORT STRUCTURE SUPPORT COLUMN JOINT SPHERICAL BEARING HOUSING ASSEMBLY	
DO NOT VERIFY INFORMATION BY SCALING DRAWING	DIMENSIONS ARE IN INCHES MACHINE SURFACES BREAK SHARP EDGES .005/.020	DSN: T. CRUICKSHANK	DRAWING NO:
TOLERANCES NON-CUMULATIVE	DECIMAL-INCH FRACTIONS	CHK:	SE172-245
NEXT ASSEMBLY	.X ±.100 0°-120° ±.100 .XX ±.030 12°-12° ±.100 .XXX ±.005 12°-120° ±.100 ANGULAR ±.0°-15° OVER 120° ±.100	ENGR: F. DAHLGREN	SHEET 3 OF 3
WEIGHT 1.4 lbs	MODEL NAME SE172-245-1	WELDING ENGINEER	REV 0.4
RELEASE LEVEL: WIP DWG VERSION NO: 5			

NCSX-SE172-245