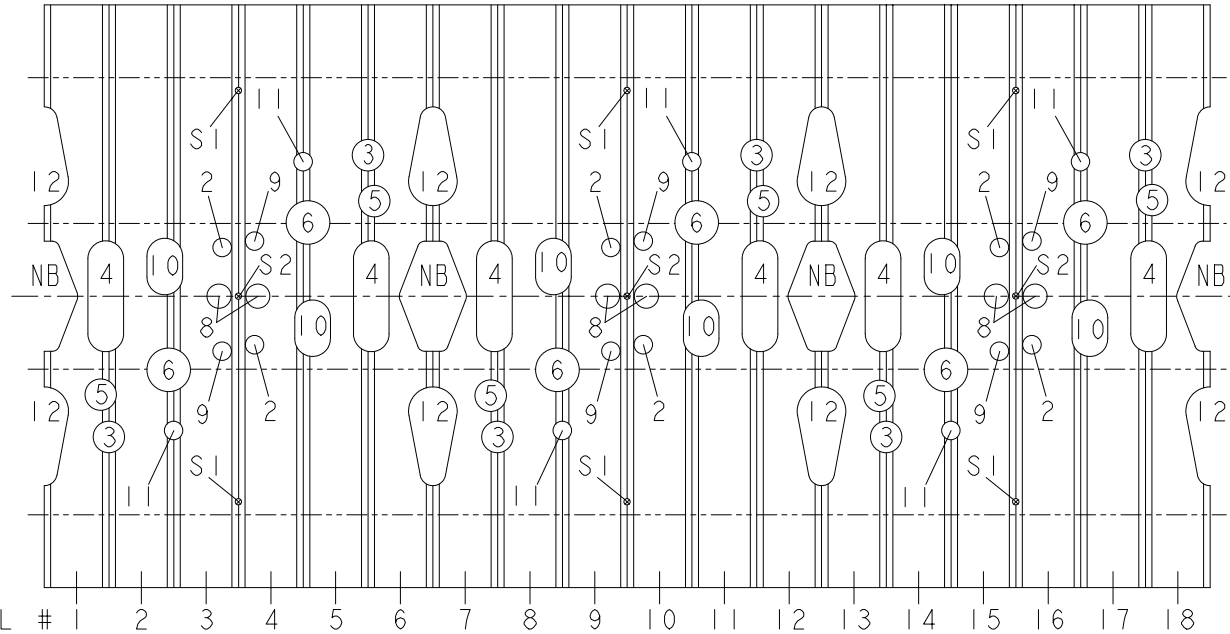


TYPE	(m1)	(m2)	(m3)	(m3)	(m2)	(m1)	(m1)	(m2)	(m3)	(m3)	(m2)	(m1)	(m1)	(m2)	(m3)	(m3)	(m2)	(m1)
MOD COIL #	#1	#2	#3	#4	#5	#6	#7	#8	#9	#10	#11	#12	#13	#14	#15	#16	#17	#18
	COIL	COIL	COIL	COIL	COIL	COIL	COIL	COIL	COIL	COIL	COIL	COIL	COIL	COIL	COIL	COIL	COIL	COIL
	0°																	360°

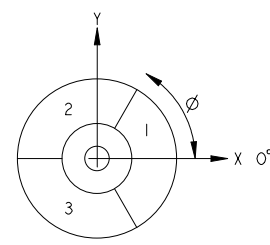
INBOARD TOP INBOARD BOTTOM OUTBOARD



1ST FIELD PERIOD 2ND FIELD PERIOD 3RD FIELD PERIOD 1ST FIELD PERIOD

PORT	DIMENSIONS
2	∅6.00 OD
3	∅8.00 OD
4	R6.00 SLOT, 23.25 $\epsilon$ TO $\epsilon$
5	∅8.00 OD
6	∅14.00 OD
7	
8	∅6.00 OD
9	∅6.00 OD

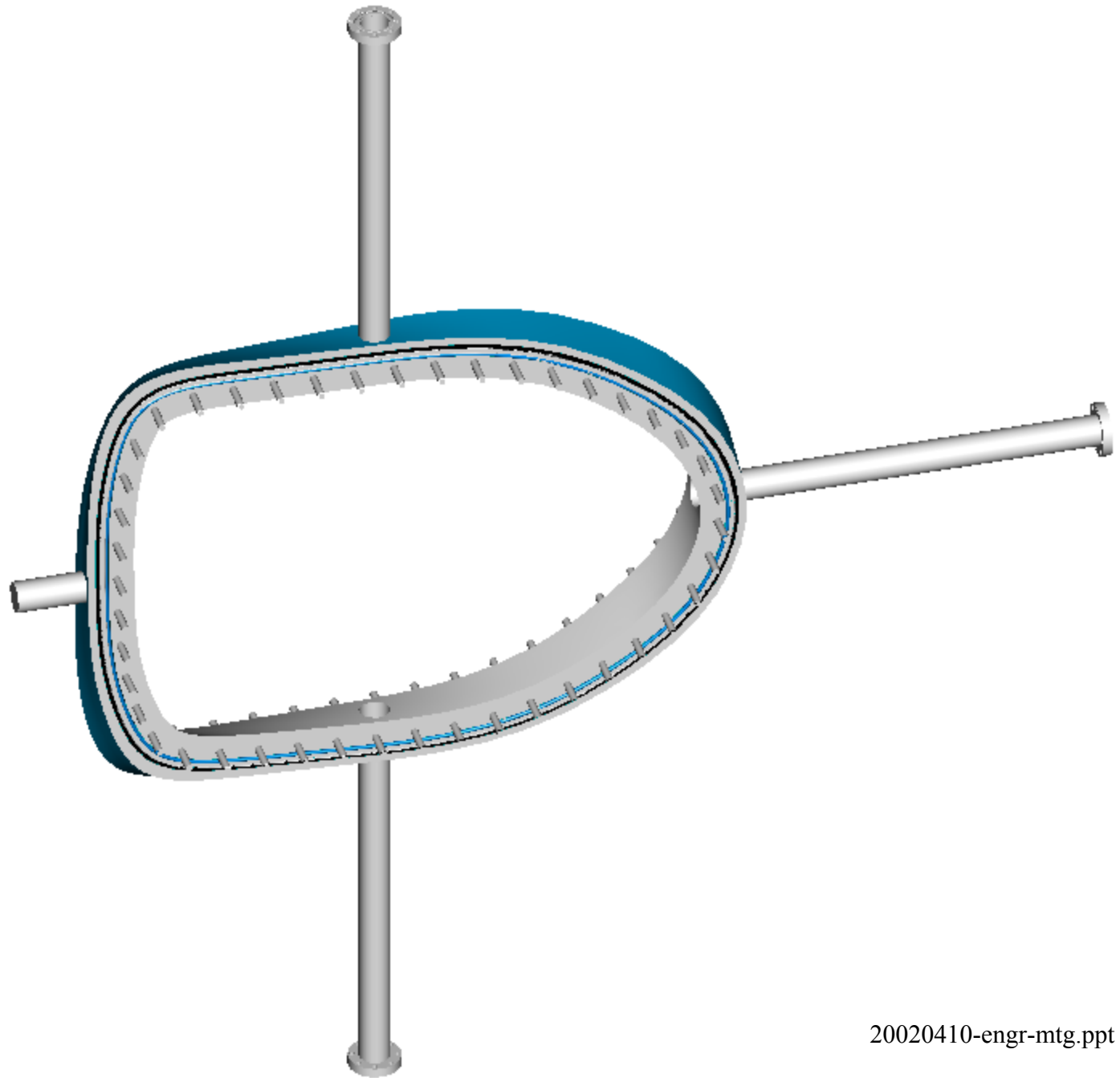
PORT	DIMENSIONS
10	R6.00 SLOT, 14.00 $\epsilon$ TO $\epsilon$
11	∅6.00 OD
12	R7.50 TO R4.00 SLOT 19.00 $\epsilon$ TO $\epsilon$
S1	∅2.00 OD
S2	∅2.00 OD

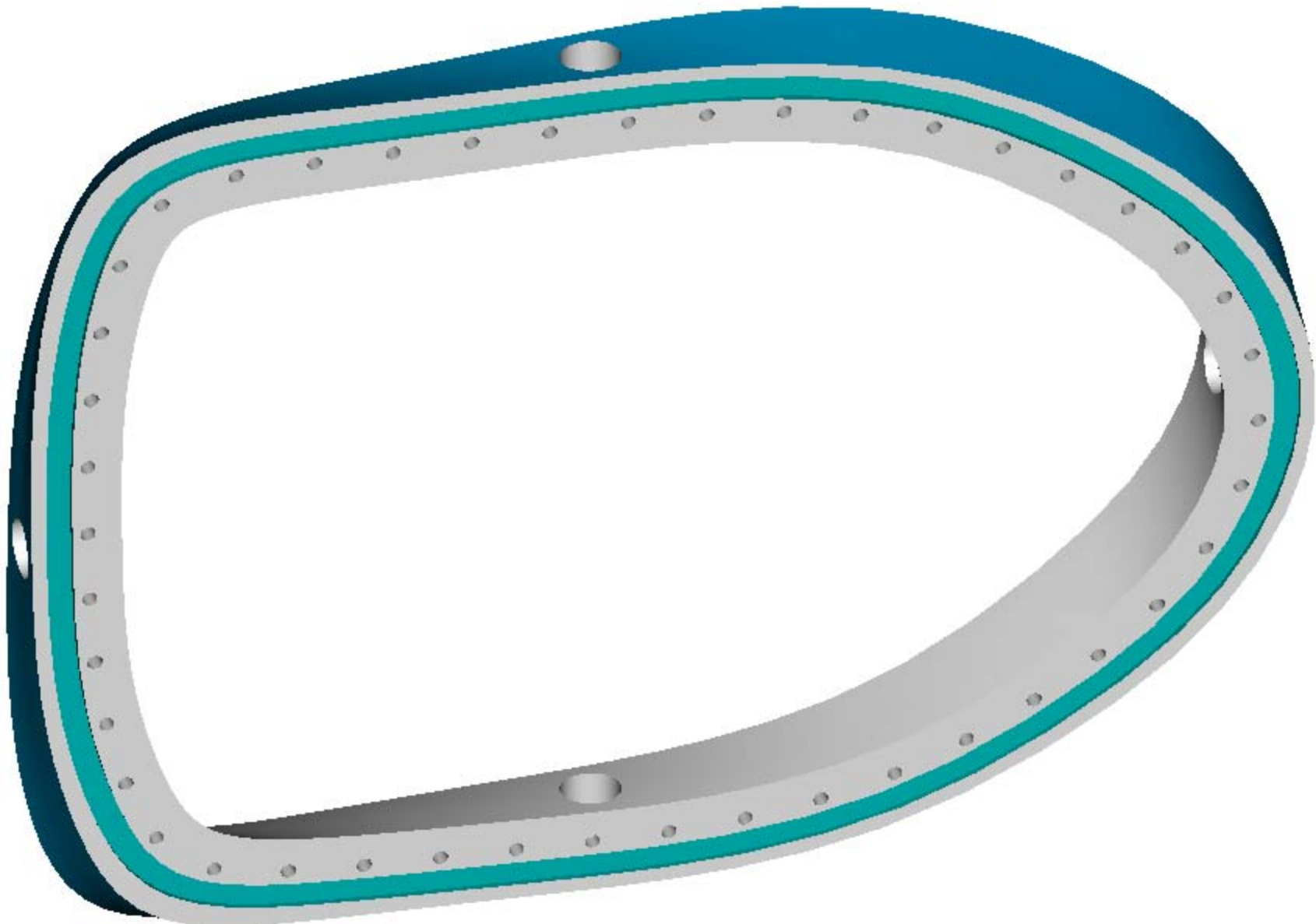


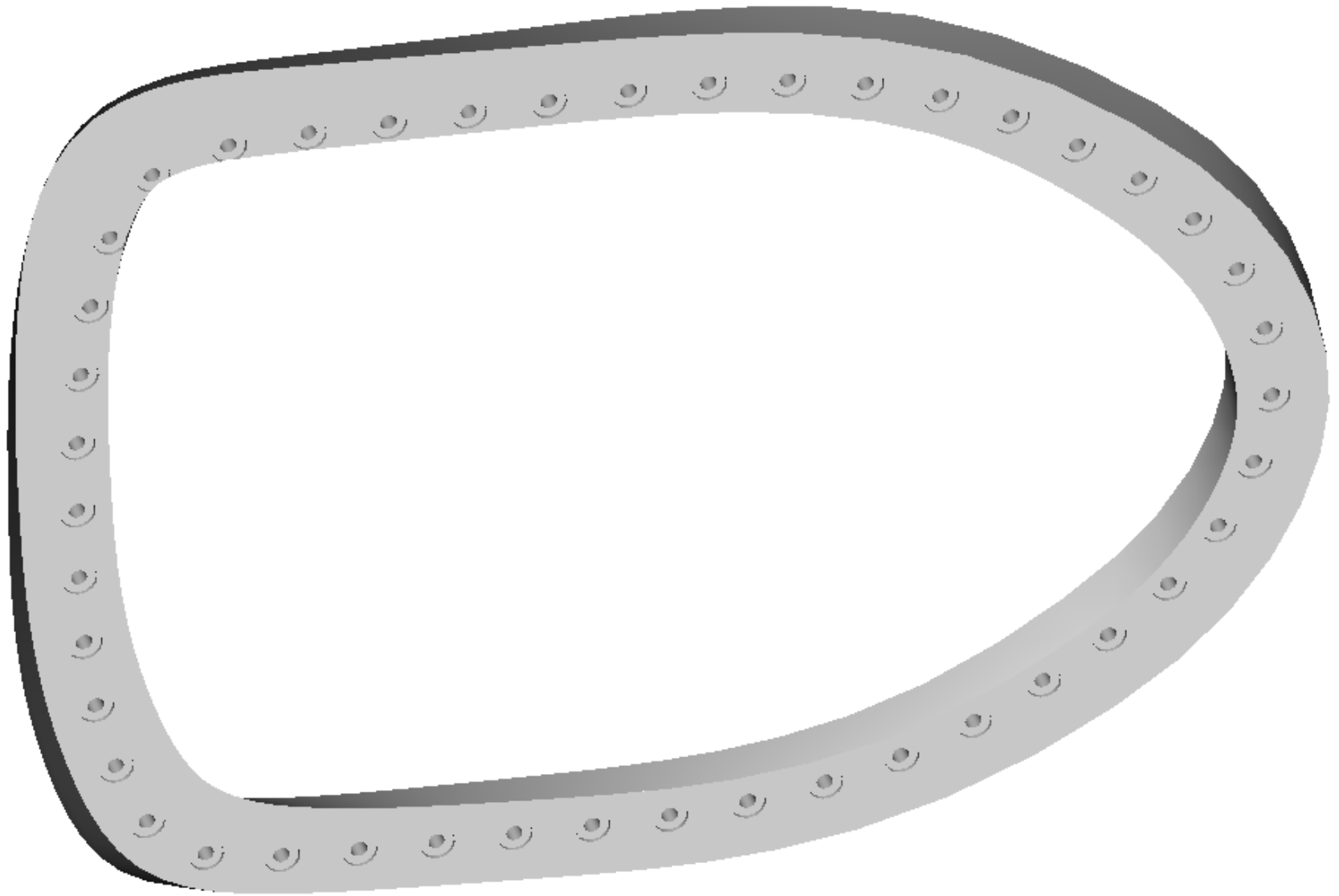
PLAN VIEW

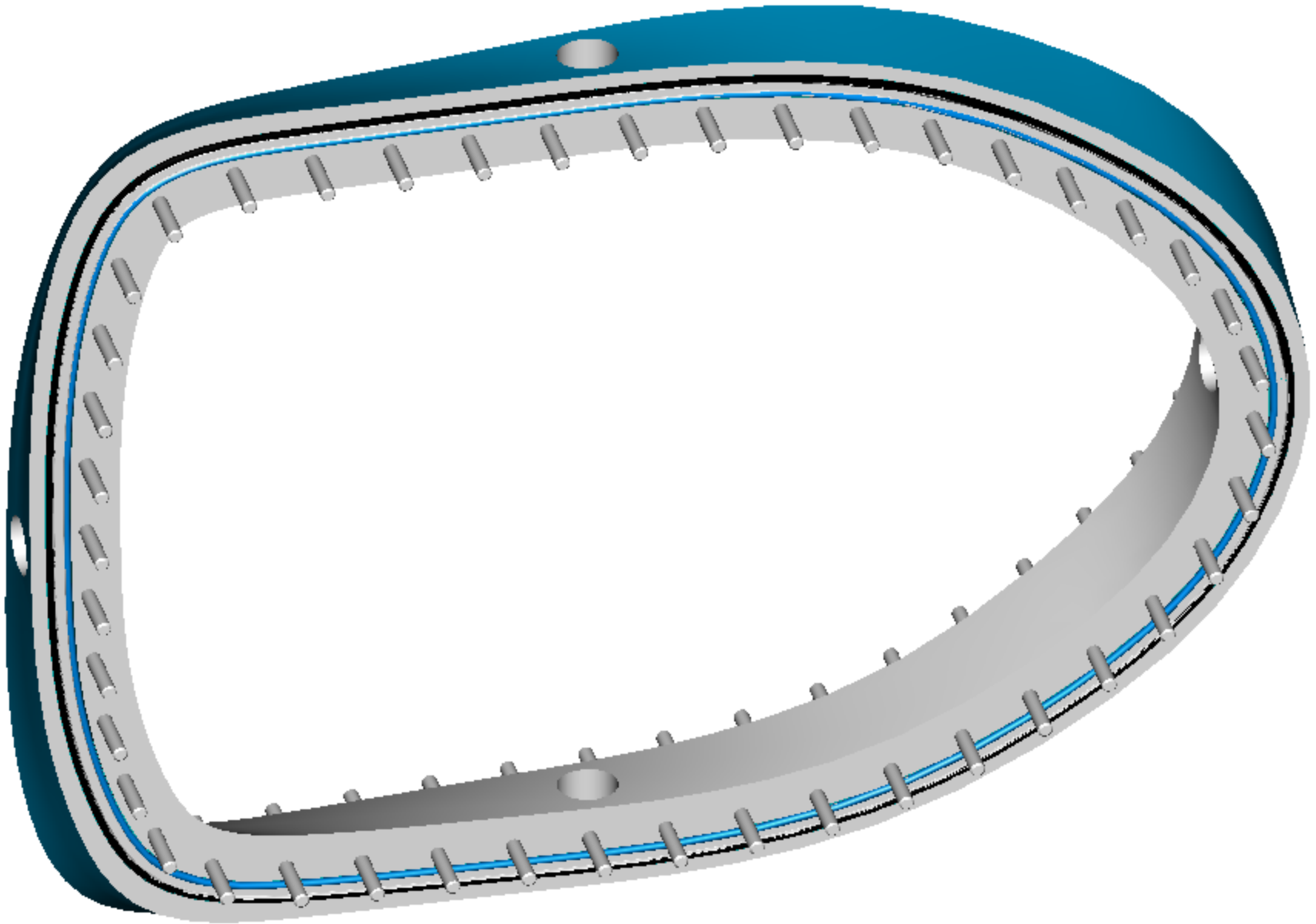
20020410-engr-mtg.ppt

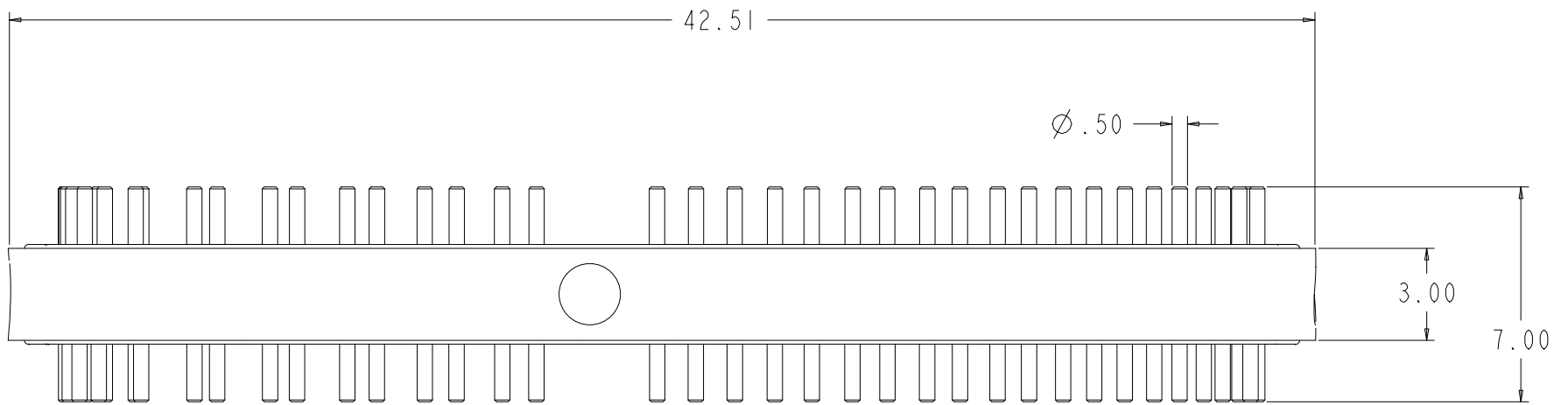
COMPUTER GENERATED DRAWING WITH MANUAL CHANGES NOT FORNITING	CENTRAL FILES: UNLESS OTHERWISE SPECIFIED DIMENSIONS ARE IN INCHES MACHINING SURFACES	PRINCETON PLASMA PHYSICS LABORATORY PRINCETON UNIVERSITY NATIONAL COMPACT STELLARATOR EXPERIMENT
PROJECT: P-8 E	TOLERANCES - NON-CUMULATIVE	DIV: MECH. ENG. DATE:
APPROVED: _____ DATE: _____	WELDING ENGINEER: _____	APPROVED: _____
	DECIMAL-INCH FRACTIONS: 1/16 1/8 1/4 3/16 1/2 5/8 3/4 7/8 1 1 1/8 1 1/4 1 1/2 1 3/4 2 2 1/4 2 1/2 3 3 1/4 3 1/2 4 4 1/4 4 1/2 5 5 1/4 5 1/2 6 6 1/4 6 1/2 7 7 1/4 7 1/2 8 8 1/4 8 1/2 9 9 1/4 9 1/2 10 10 1/4 10 1/2 11 11 1/4 11 1/2 12 12 1/4 12 1/2 13 13 1/4 13 1/2 14 14 1/4 14 1/2 15 15 1/4 15 1/2 16 16 1/4 16 1/2 17 17 1/4 17 1/2 18 18 1/4 18 1/2	SHEET 1 OF 1 REV 0

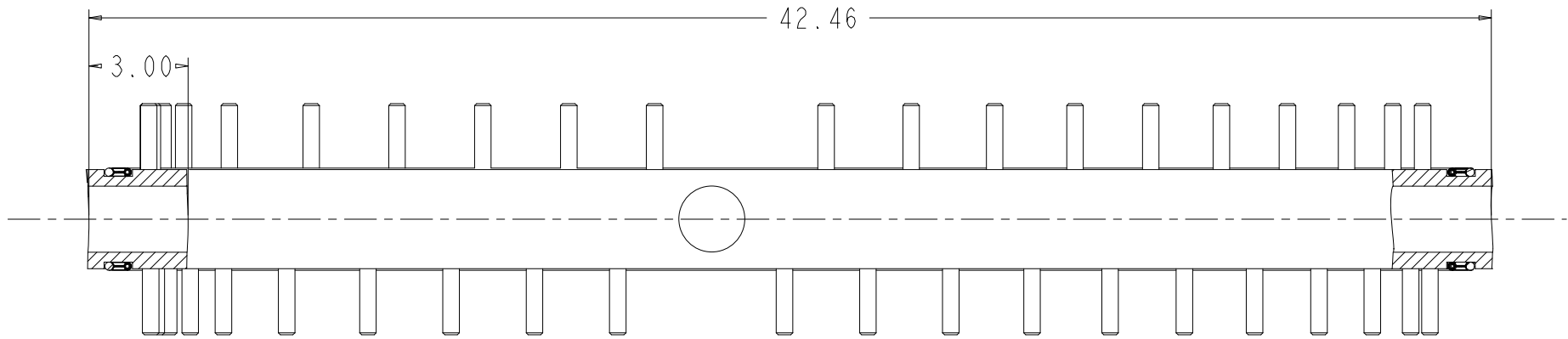




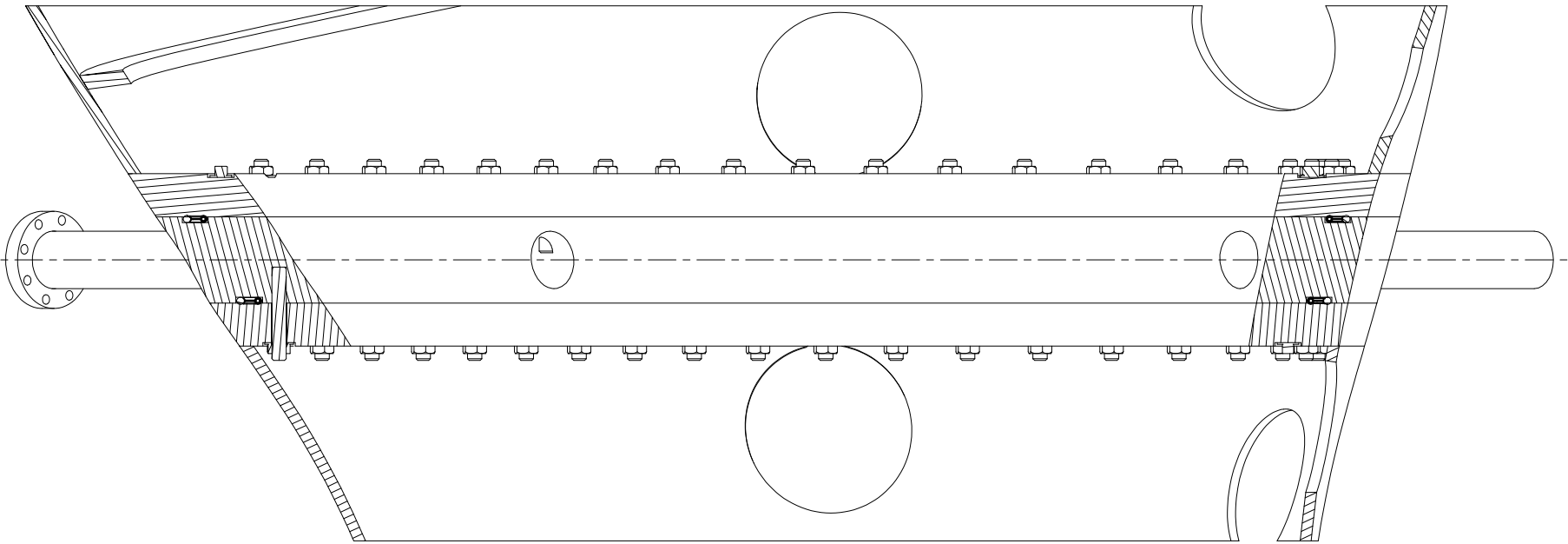


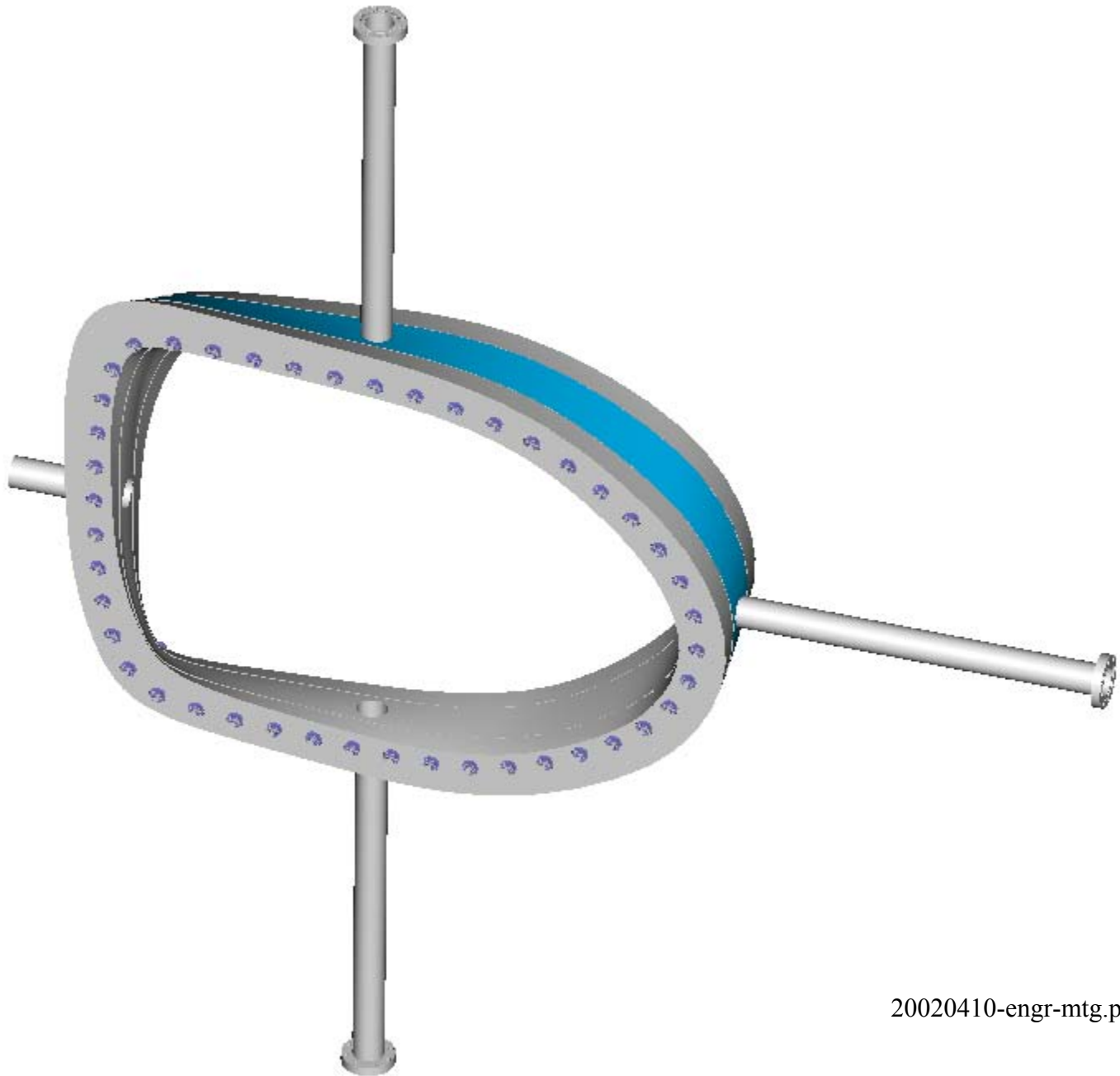


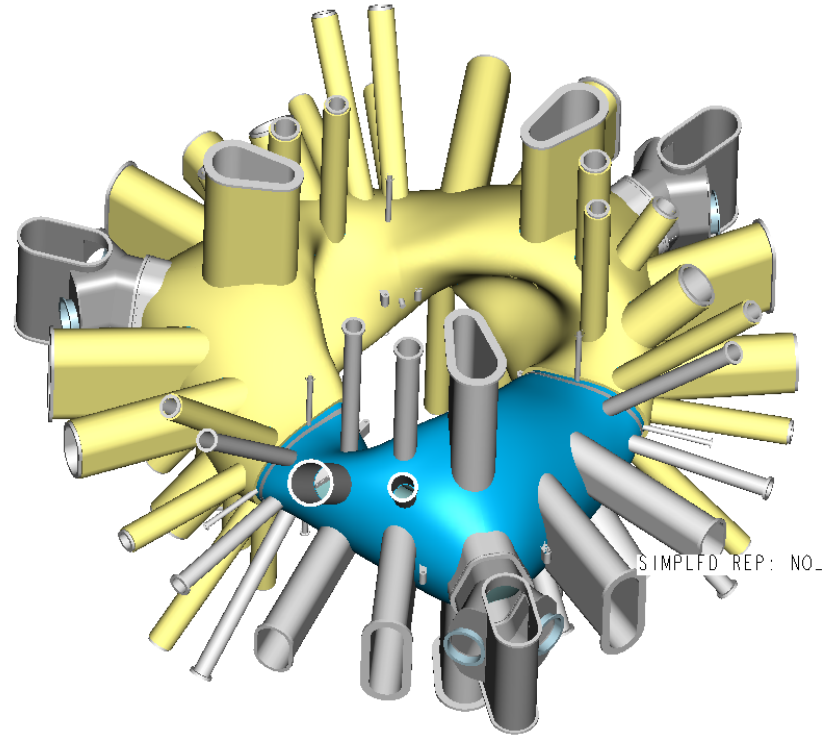
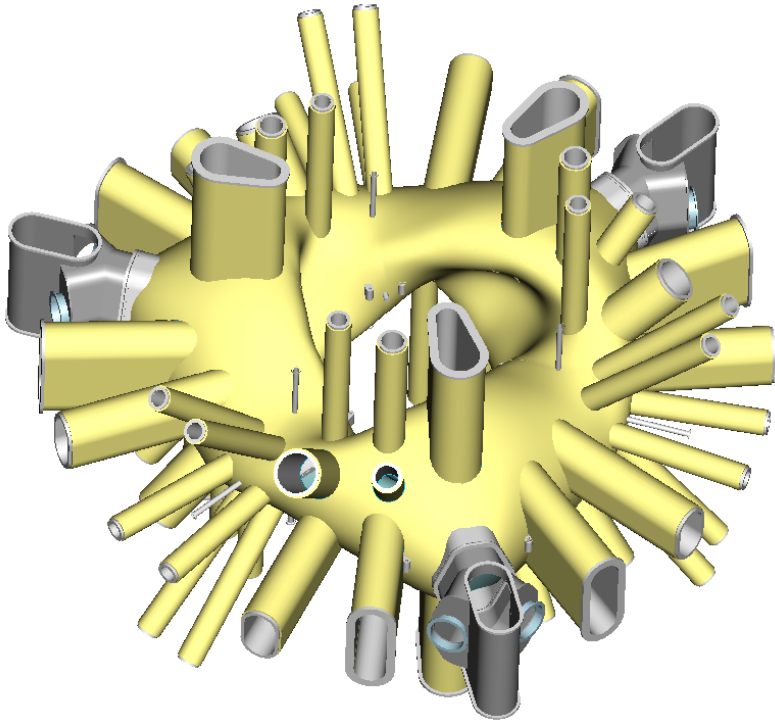








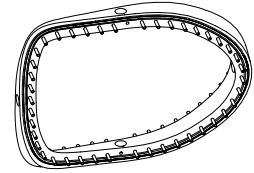




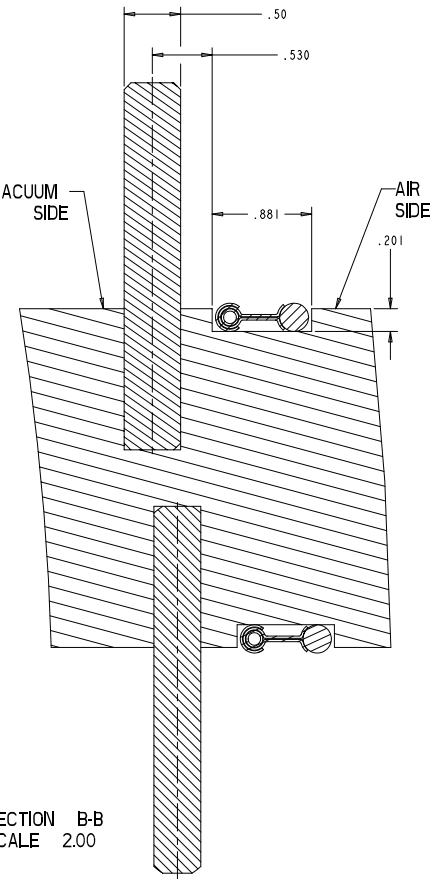
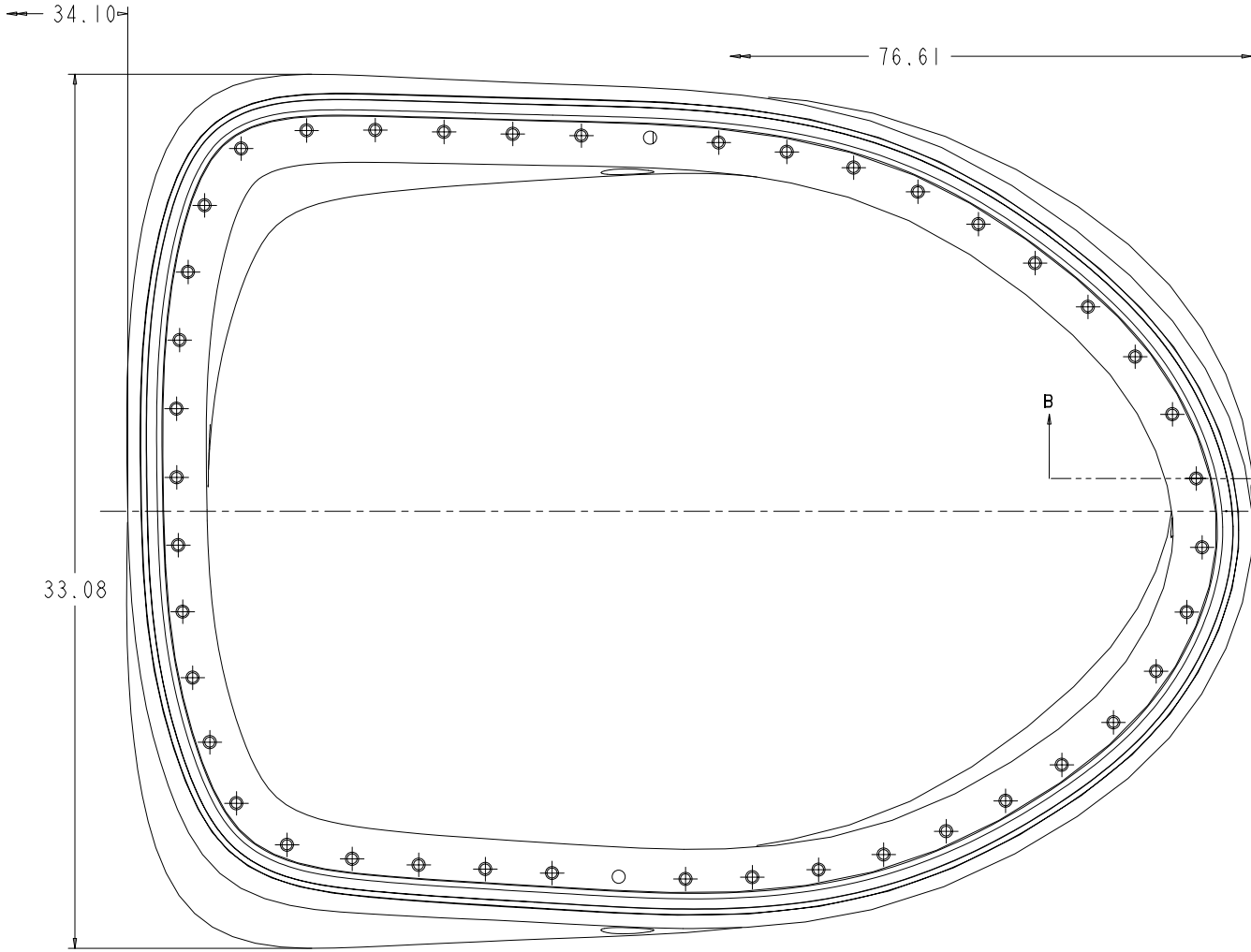
PRELIMINARY

NOTES:

- 1. INTERPRET DIMENSIONS AND TOLERANCES PER ANSI Y14.5M
- 2. DIMENSIONS ARE IN INCHES



ISOMETRIC VIEW  
FOR REFERENCE ONLY  
SCALE 0.100



s17e122-018\_2.drw

PRELIMINARY

SECTION B-B  
SCALE 2.00