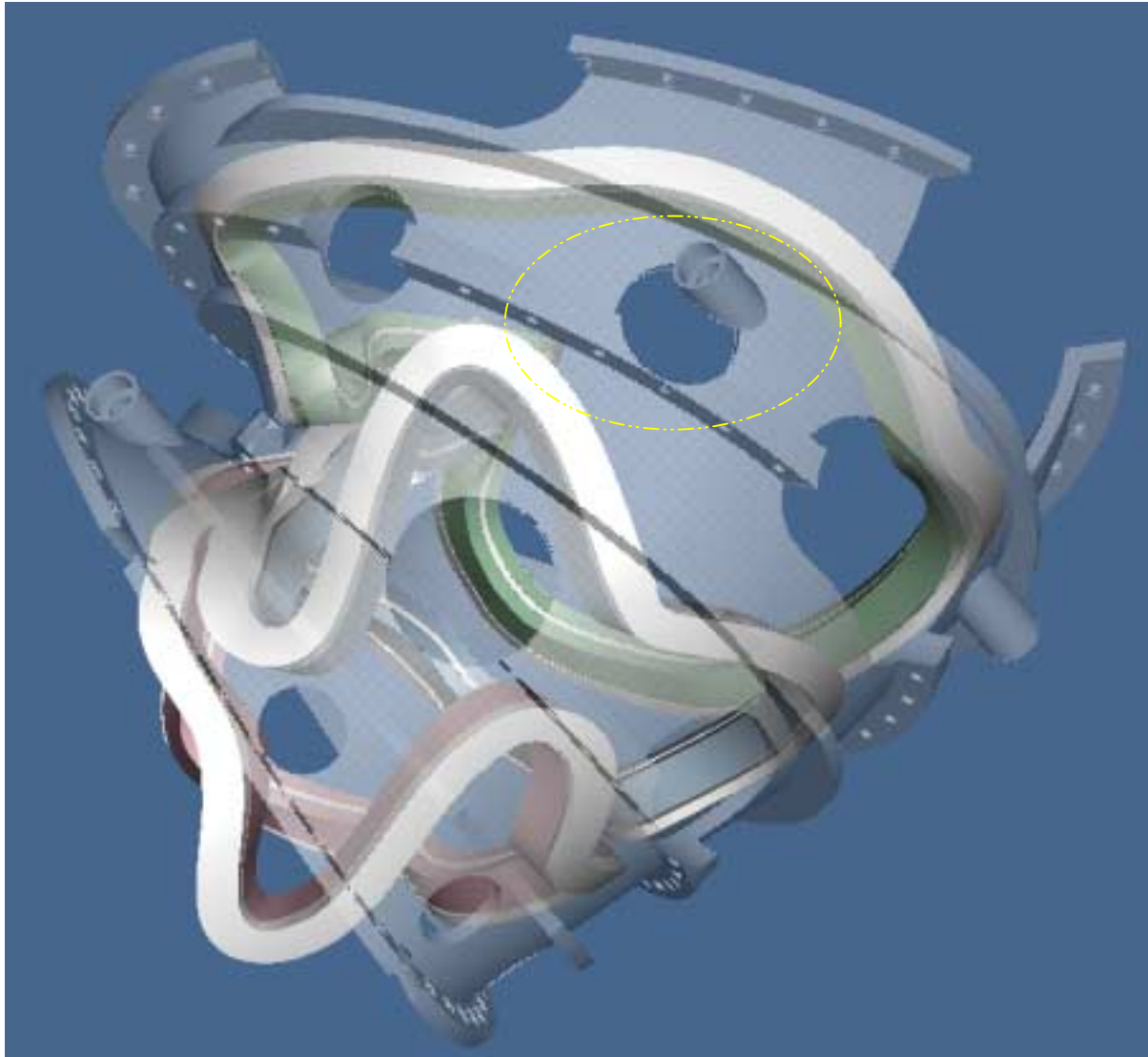
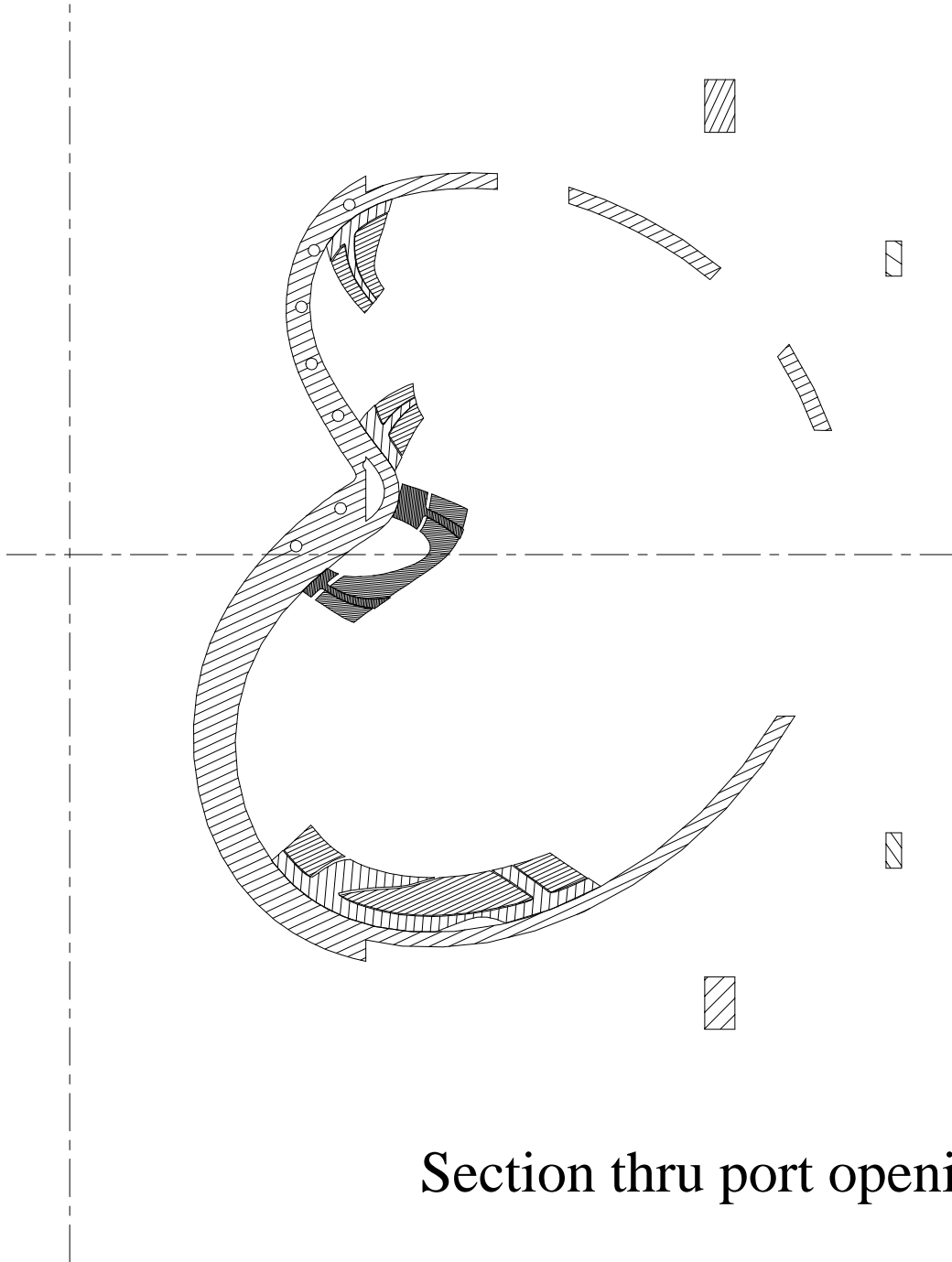


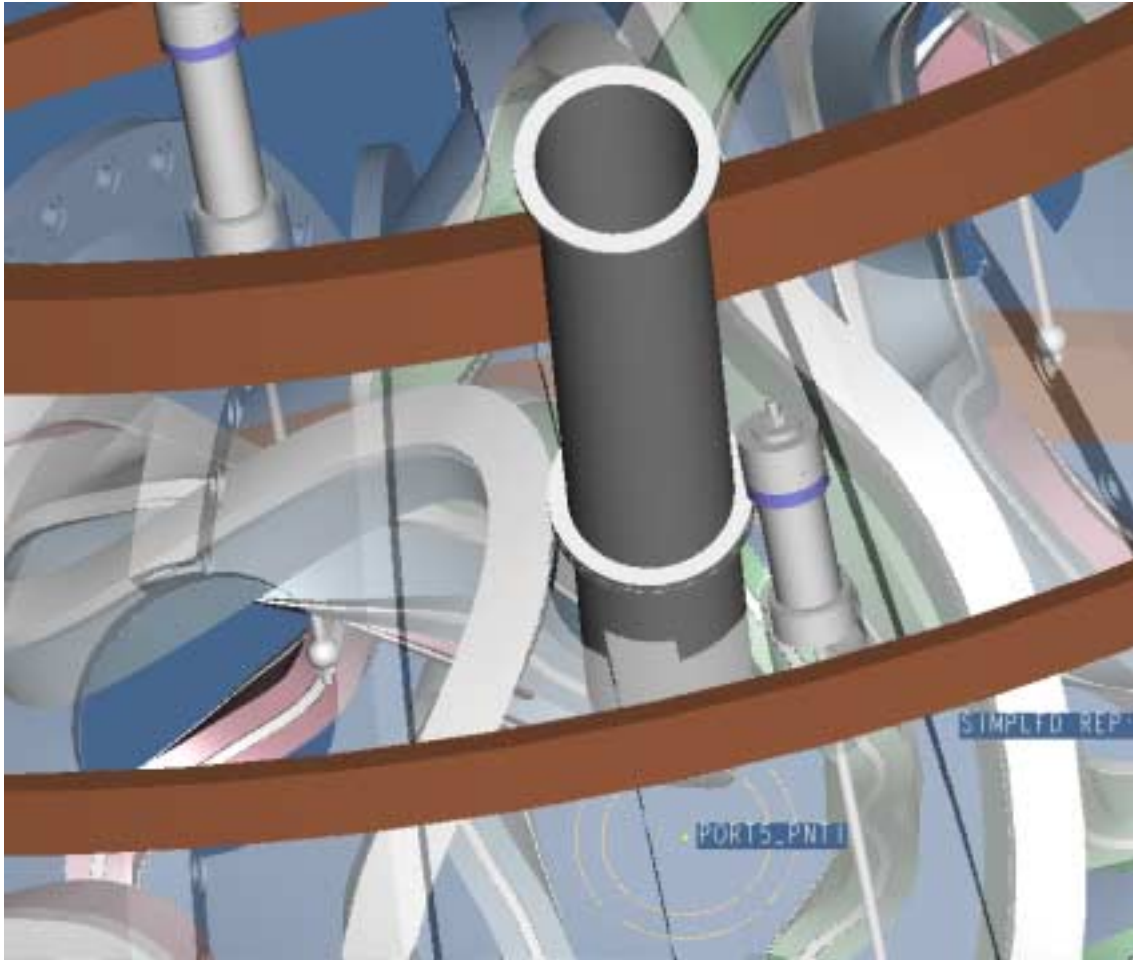
# VV support and diagnostic port interference





Section thru port opening

## Port location after rotating port



### **Location Before:**

Torordial angle 17 deg

Poloidal angle 47 deg

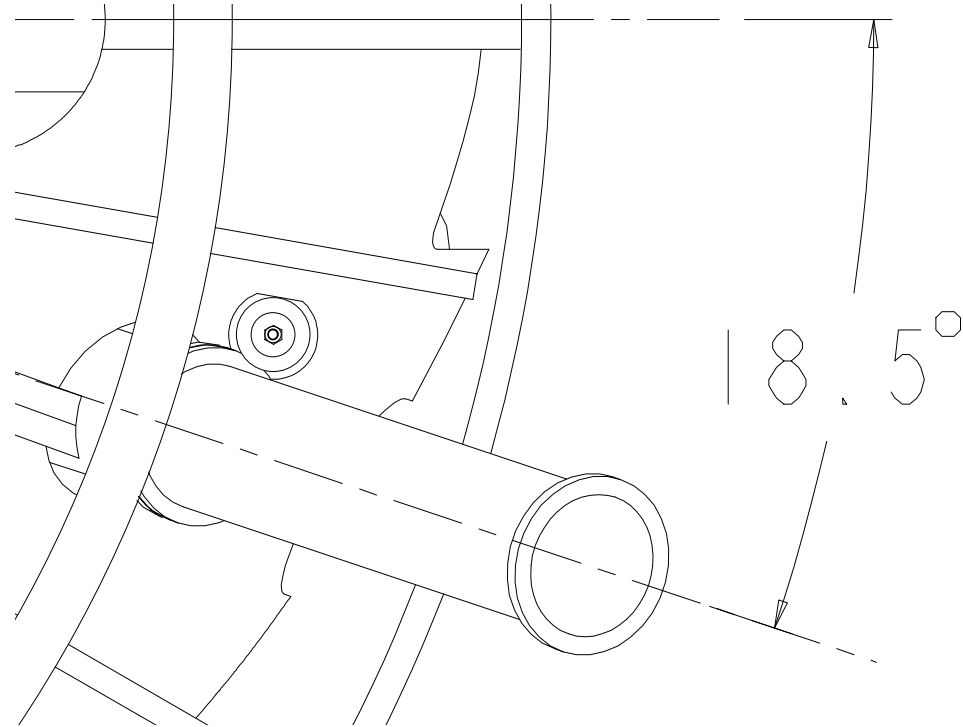
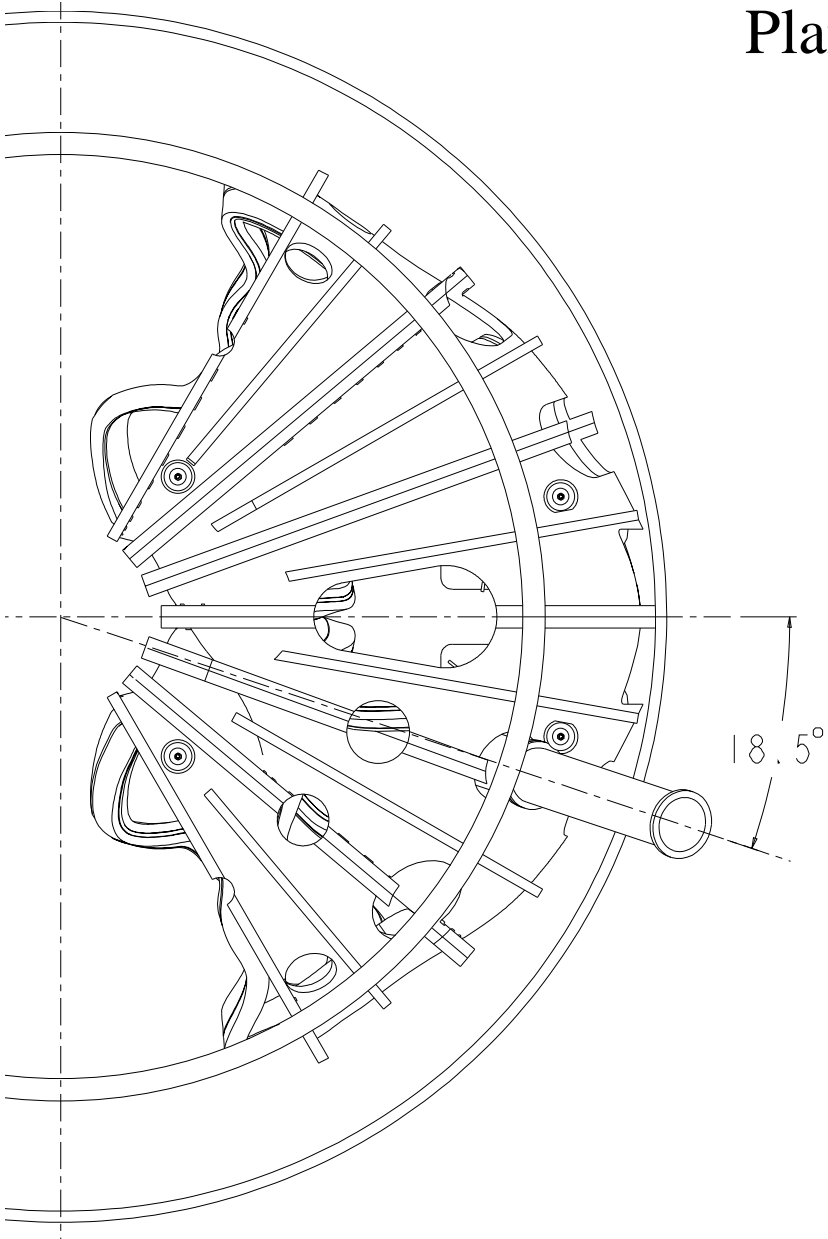
### **Location after rotation**

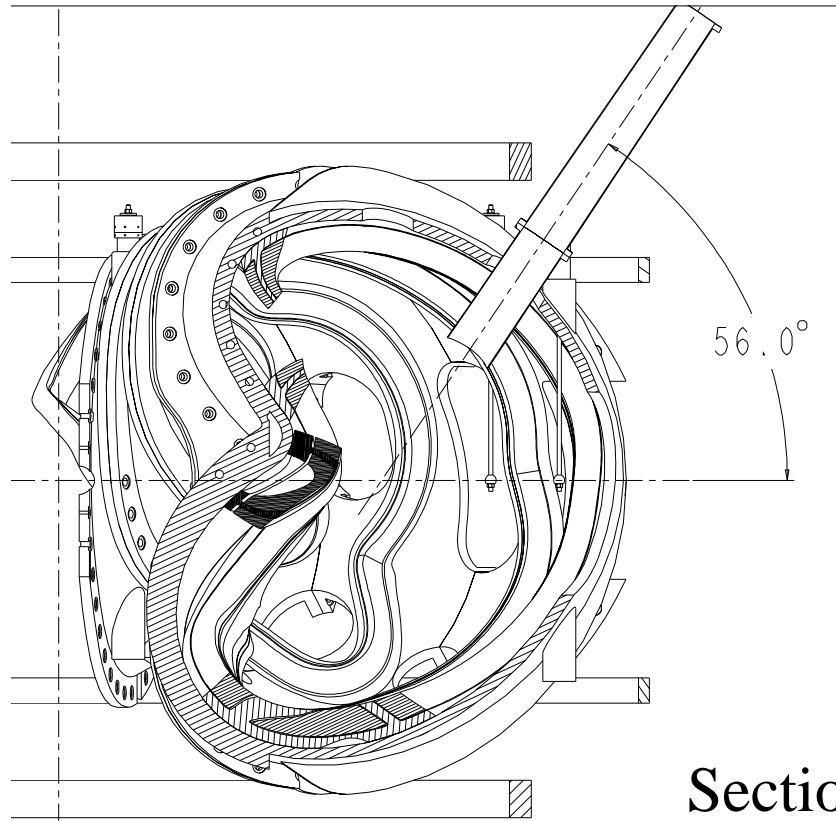
Torordial angle 18.5 deg

Poloidal angle 56 deg

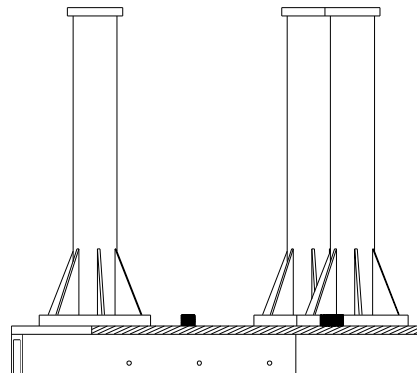
Port dia 10" od  
before and after

# Plan view

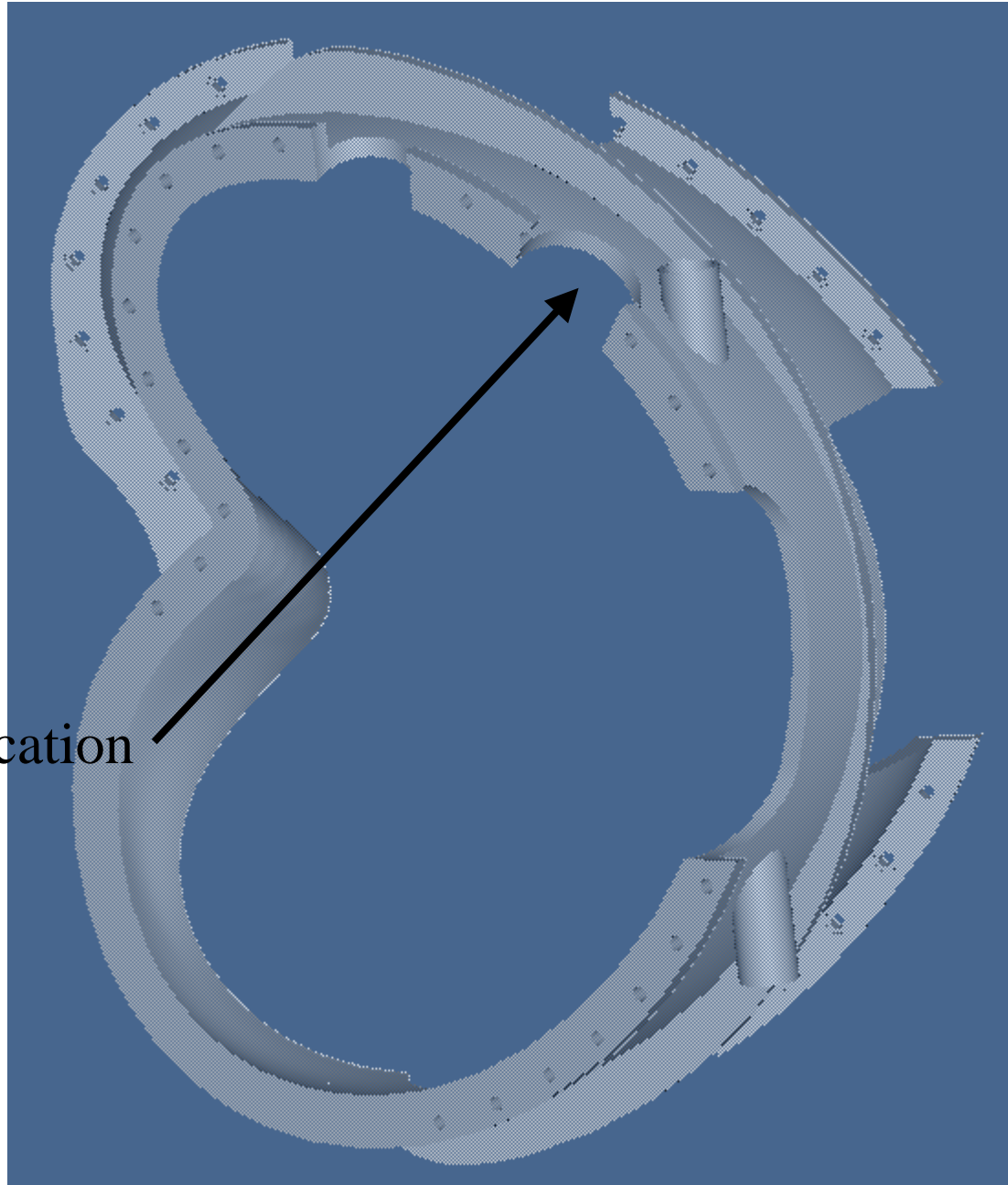




Section view after rotation

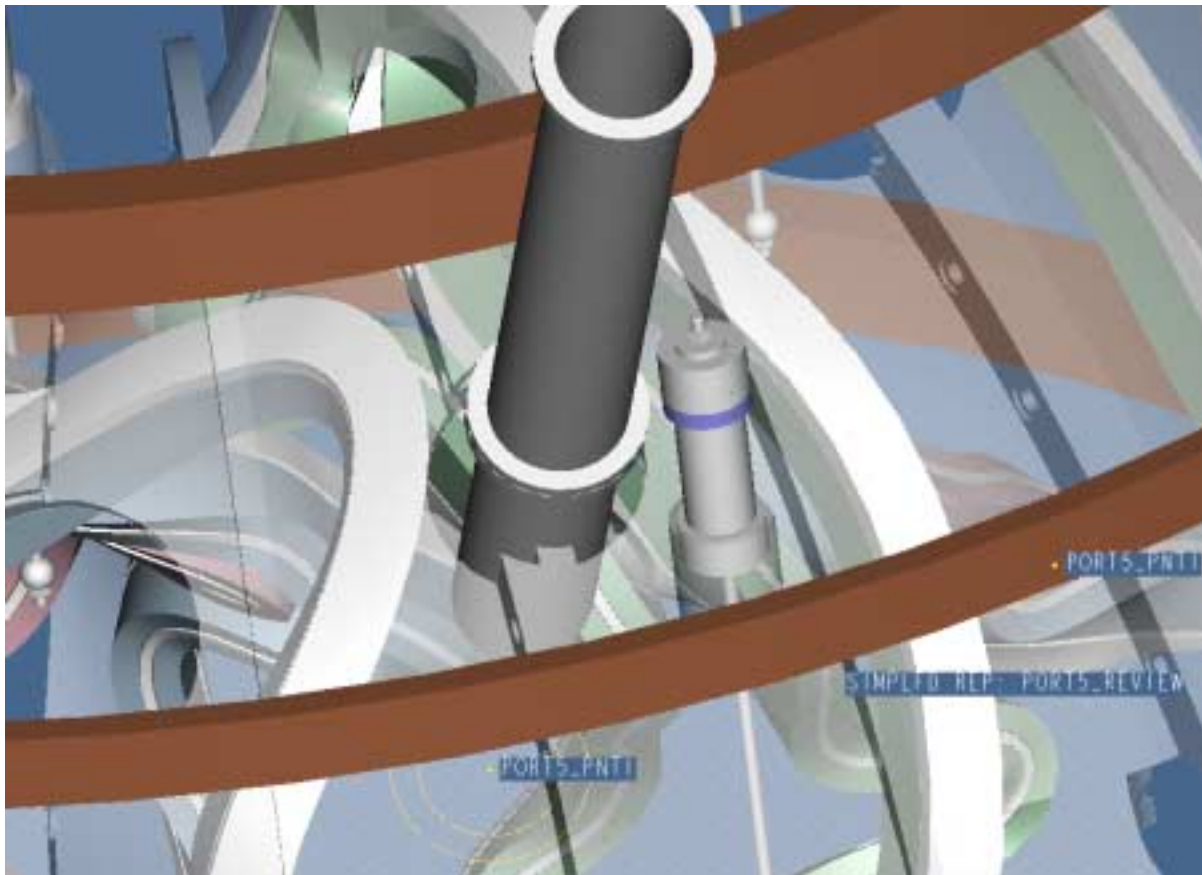


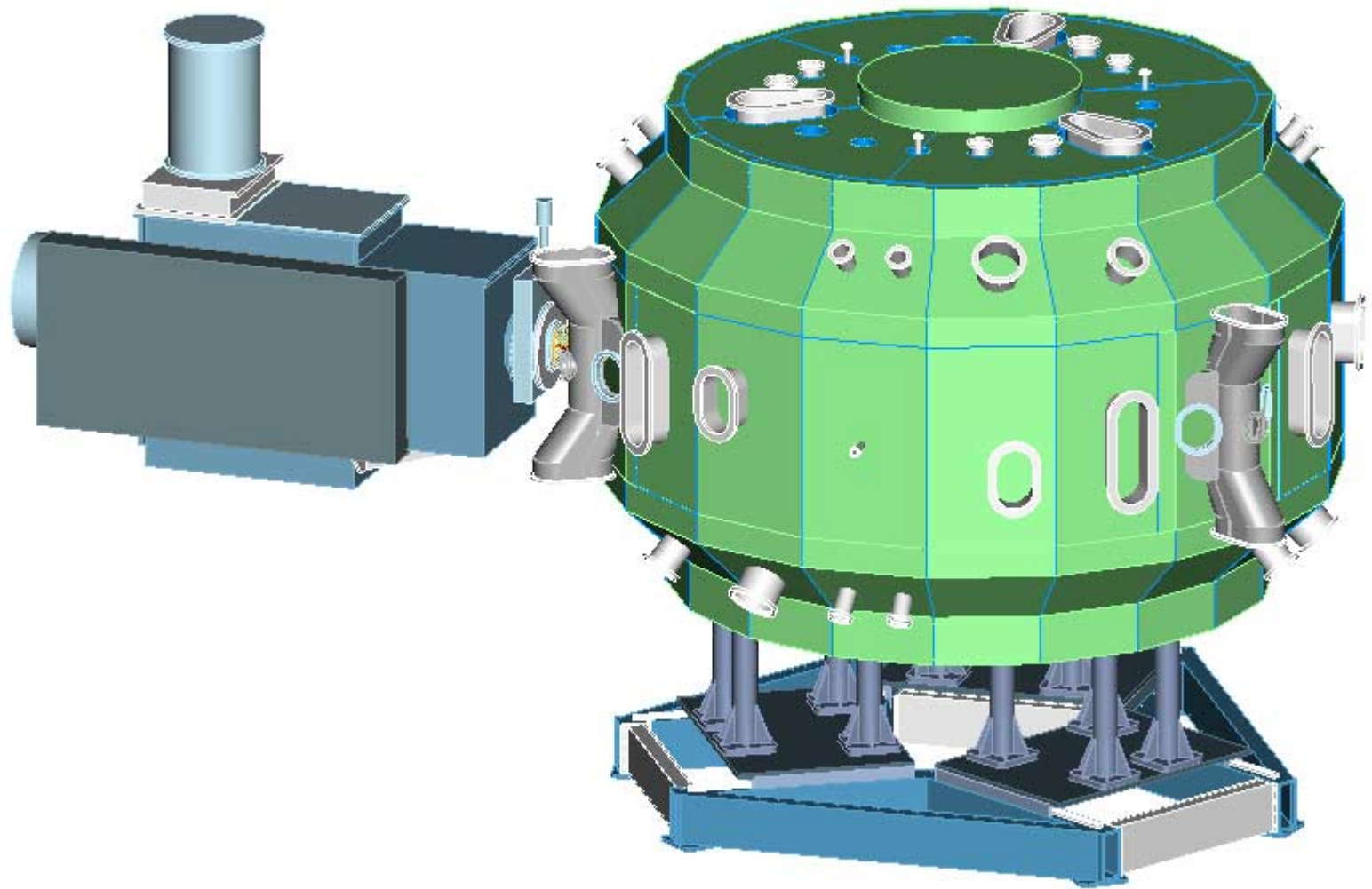
New Port Location



Reduced port dia. From 10" od to 8" od.

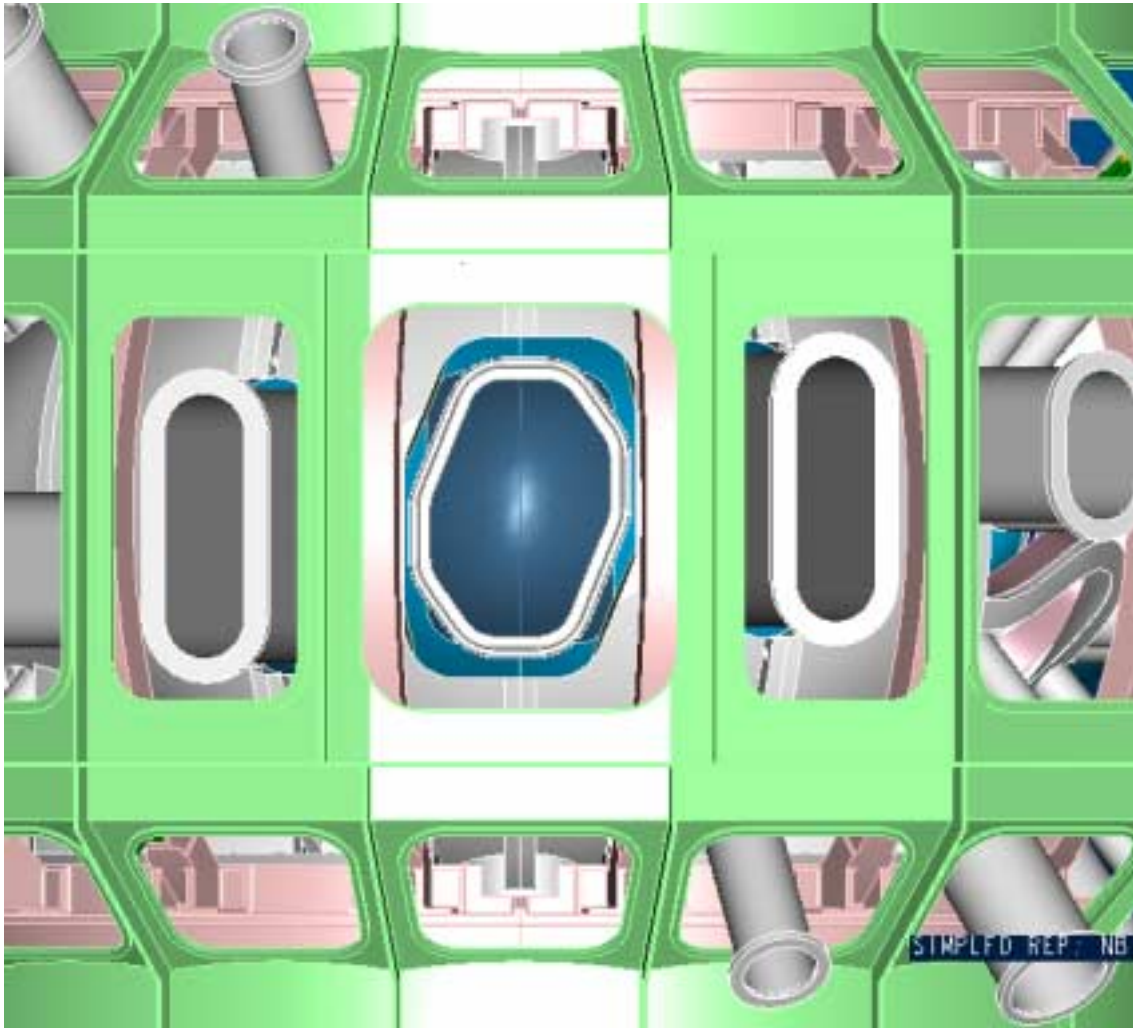
While a 10" od may work with additional tweaking reducing the od to 8" seems to assure clearance for now.



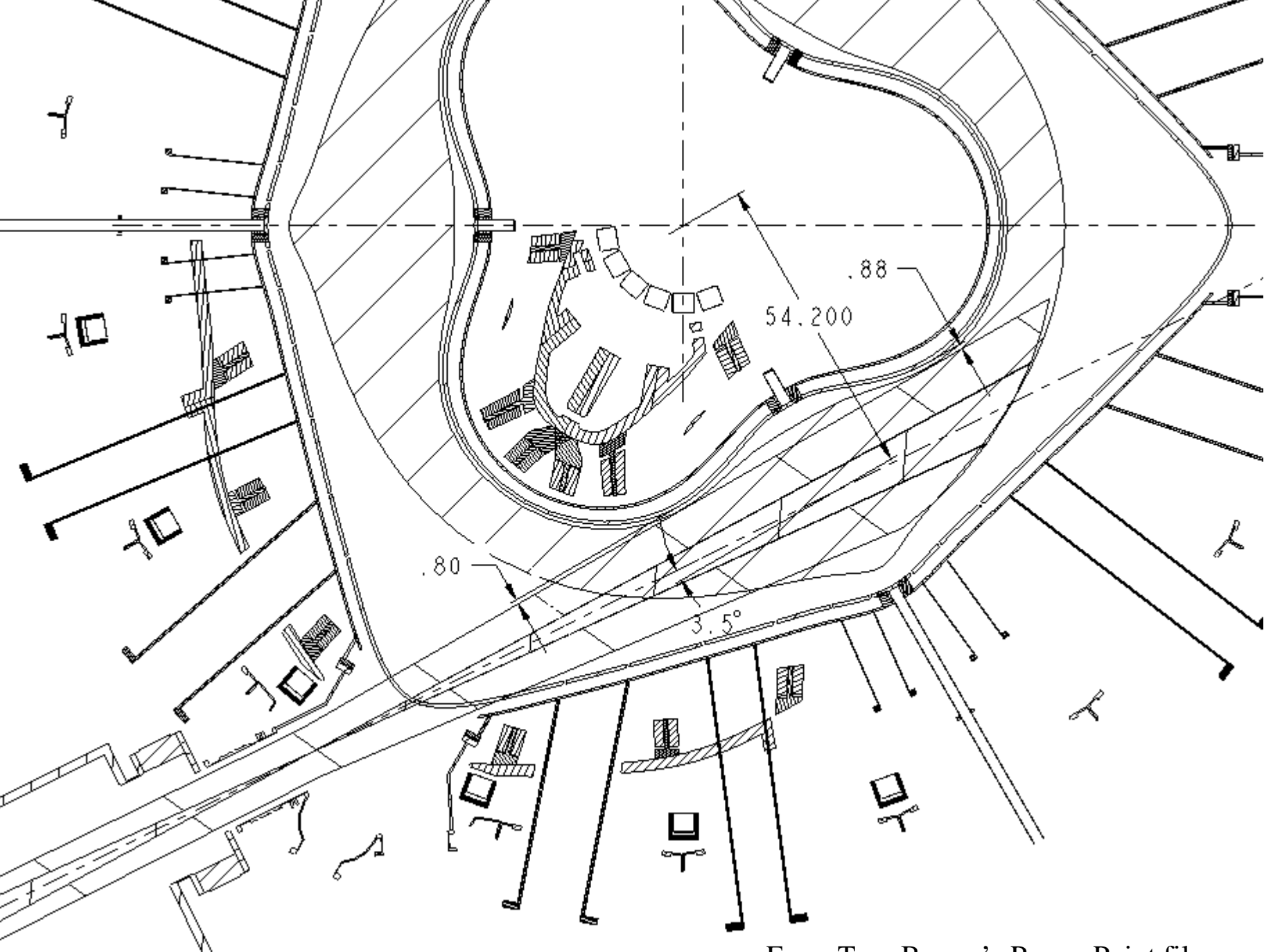


From Tom Brown's Power Point file

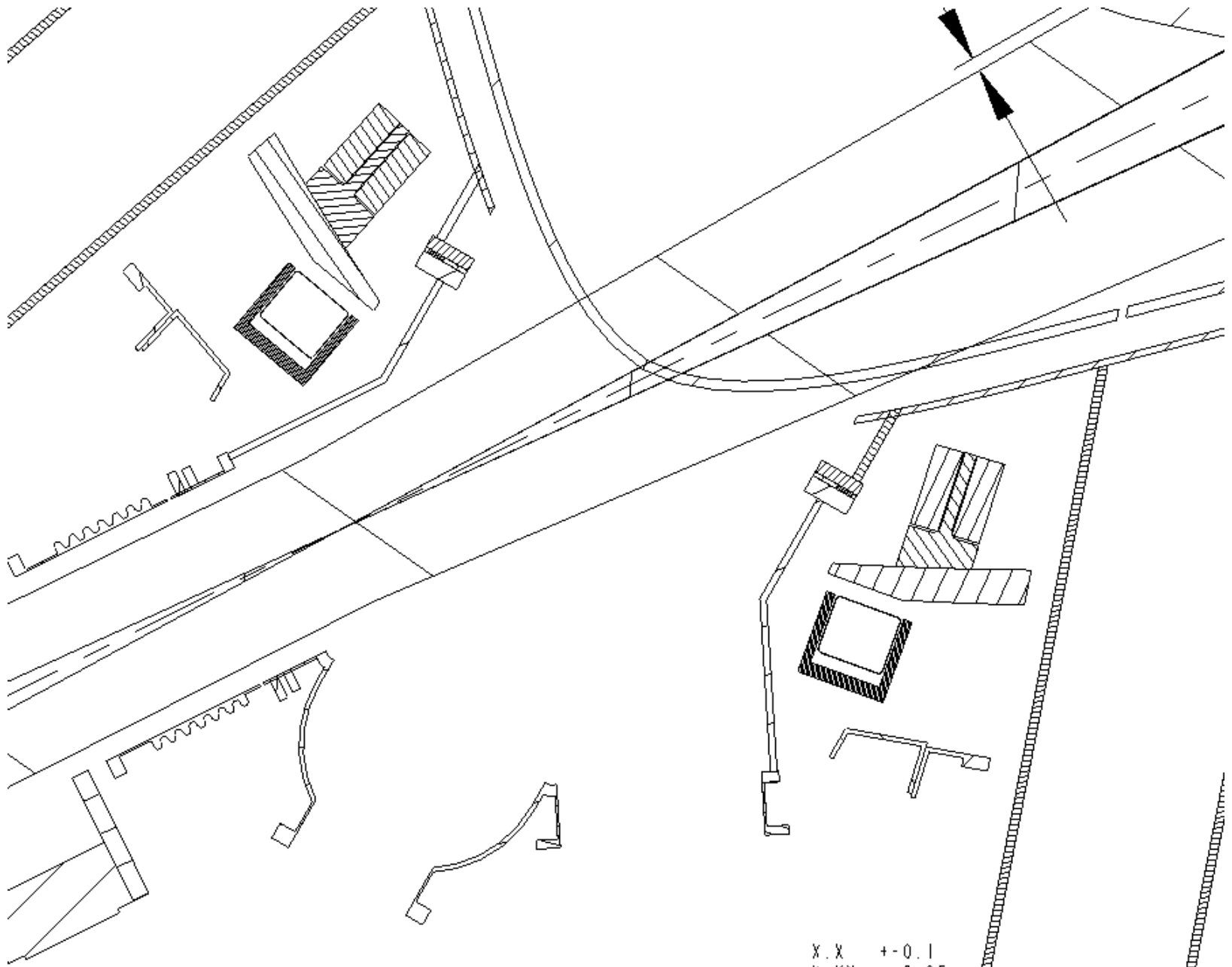




The modular coil shell opening and NBI port were reshaped to eliminate port interference with modular coils.



From Tom Brown's Power Point file

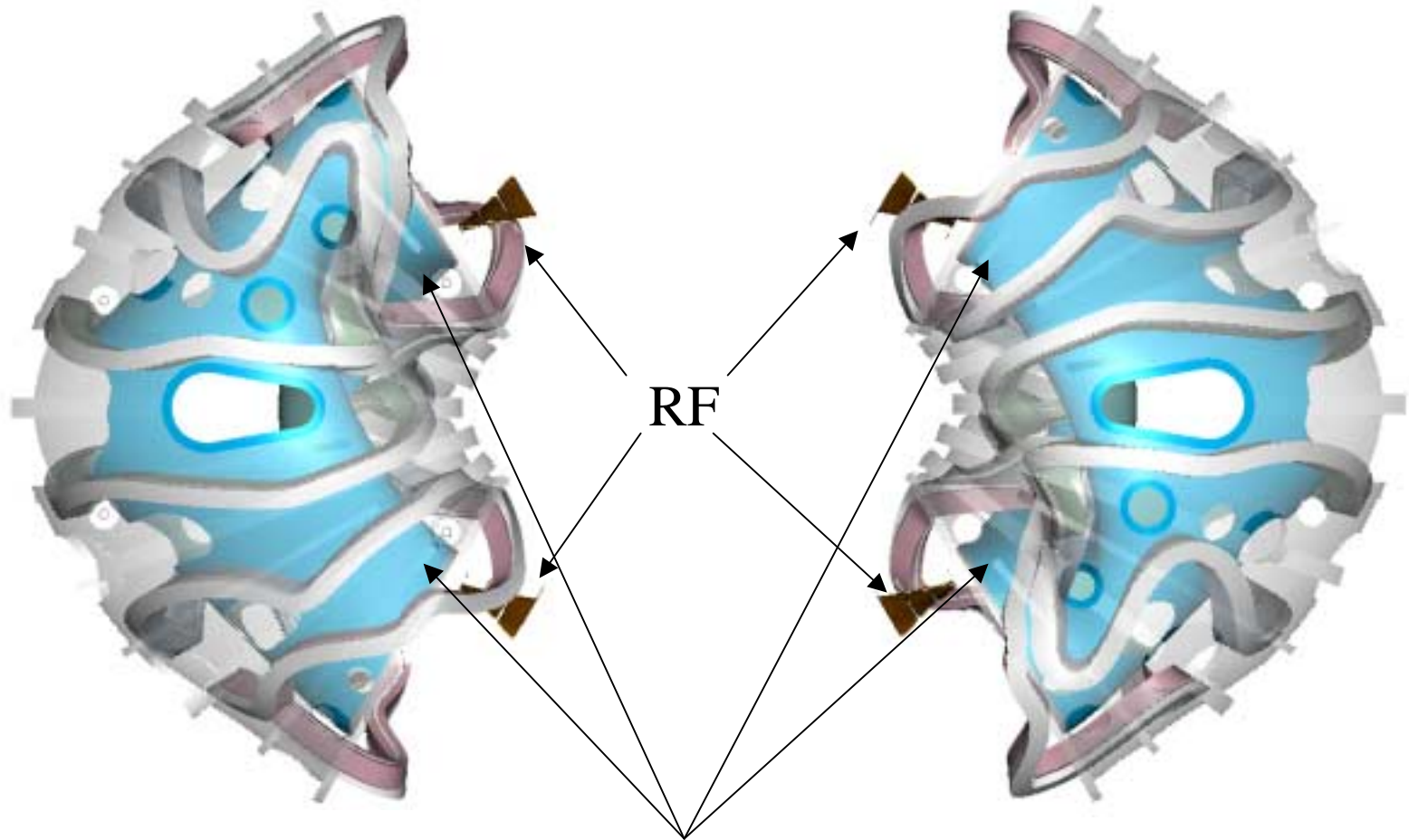


x.X +/-0.1  
x.XX +/-0.05

From Tom Brown's Power Point file

View from the bottom  
looking up

View looking down on the  
machine

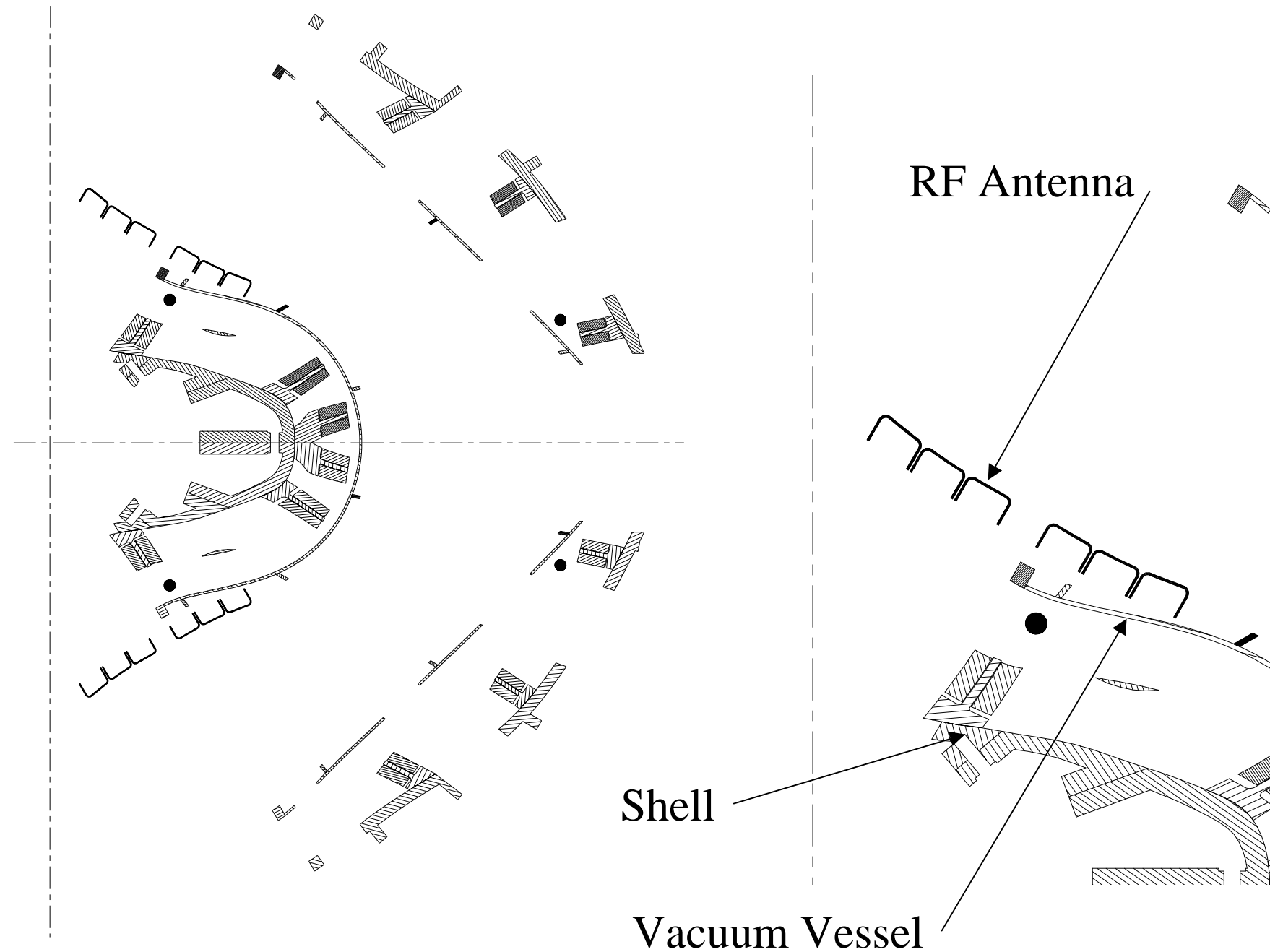


? Coax Feed locations?

6" od coax lead

Possible locations?





View looking from the  
inside of the machine  
out.

