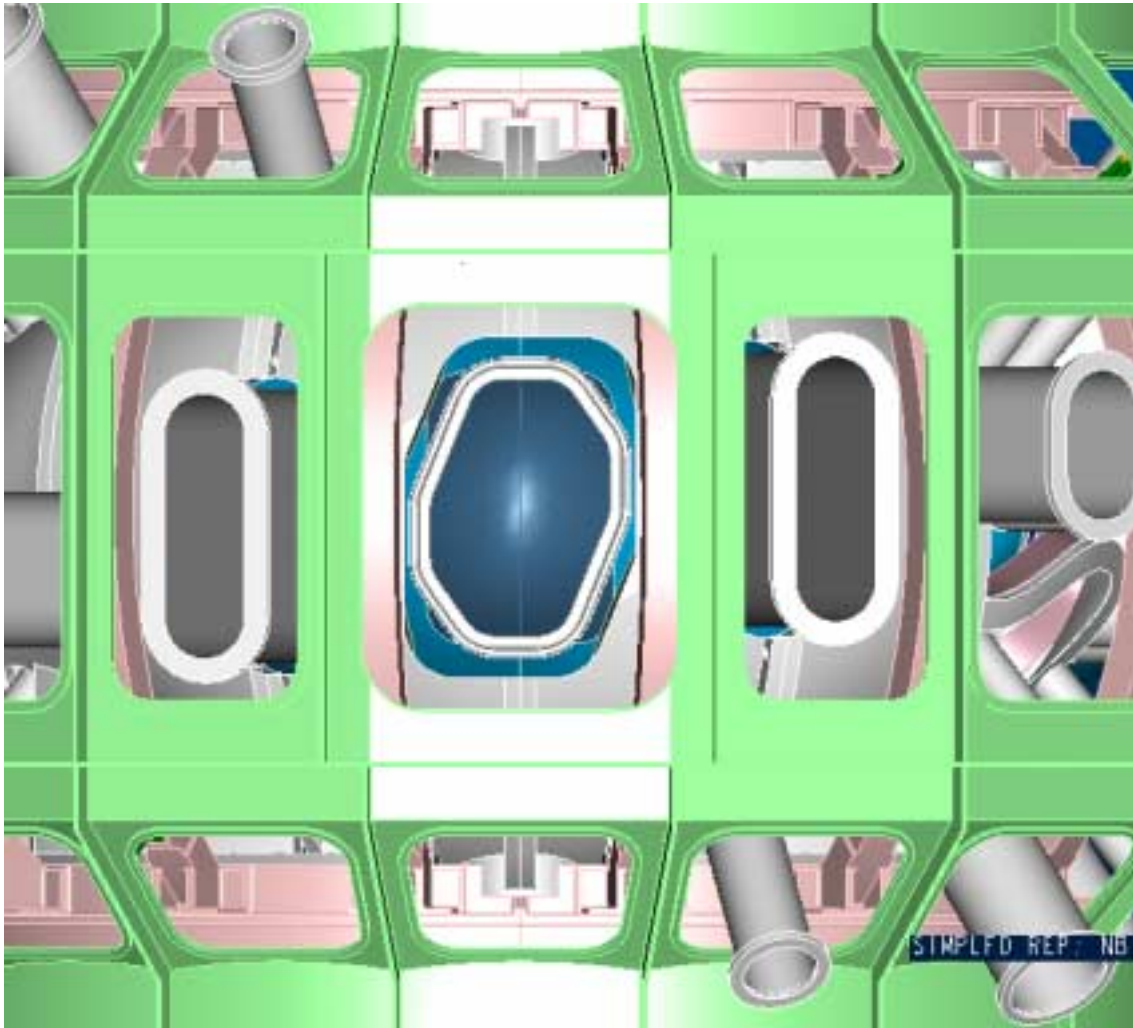
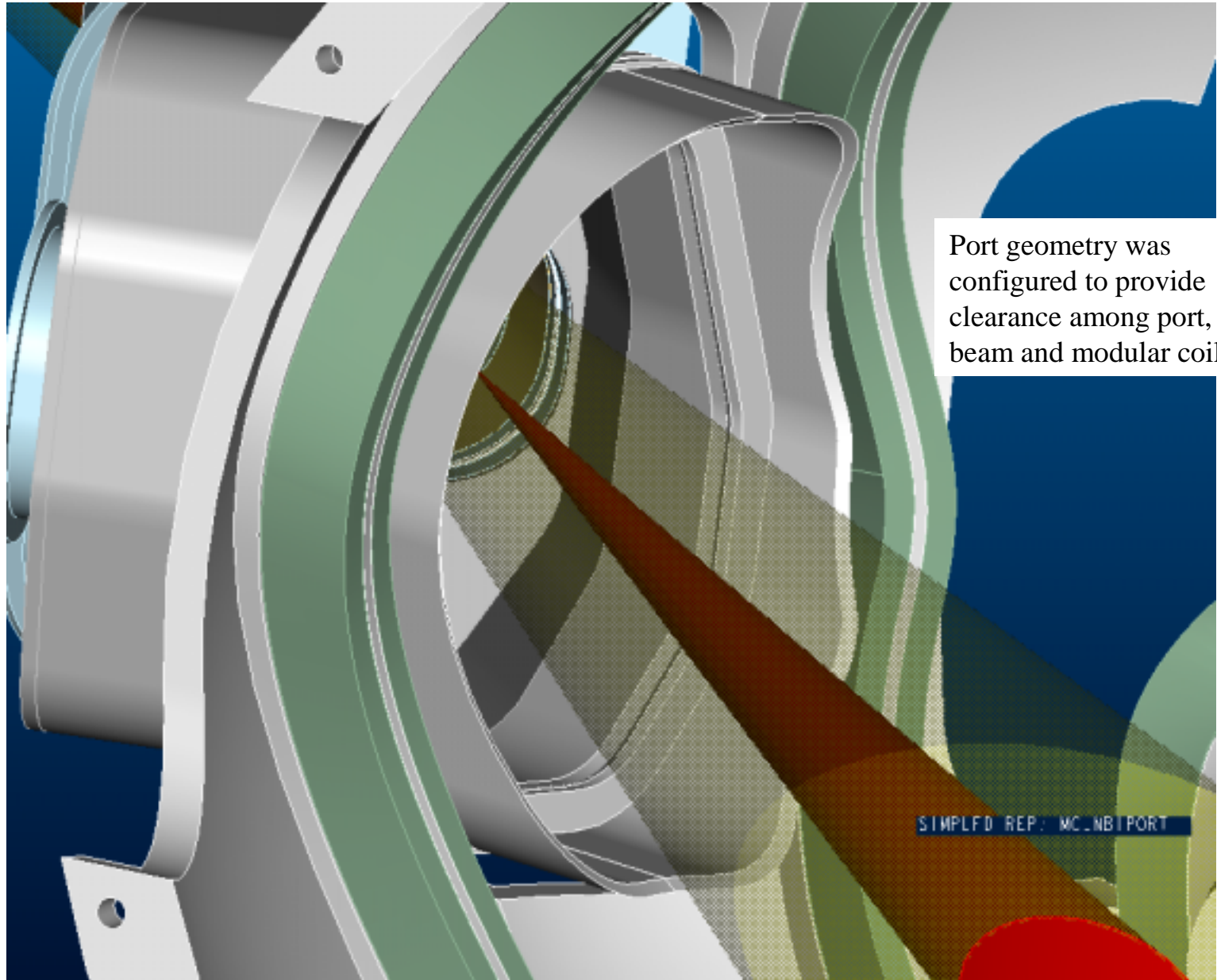


MC Shell NBI port cut
 dimension change on
 part # s17e172-017



The modular coil shell opening and NBI port were reshaped to eliminate port interference with modular coils.

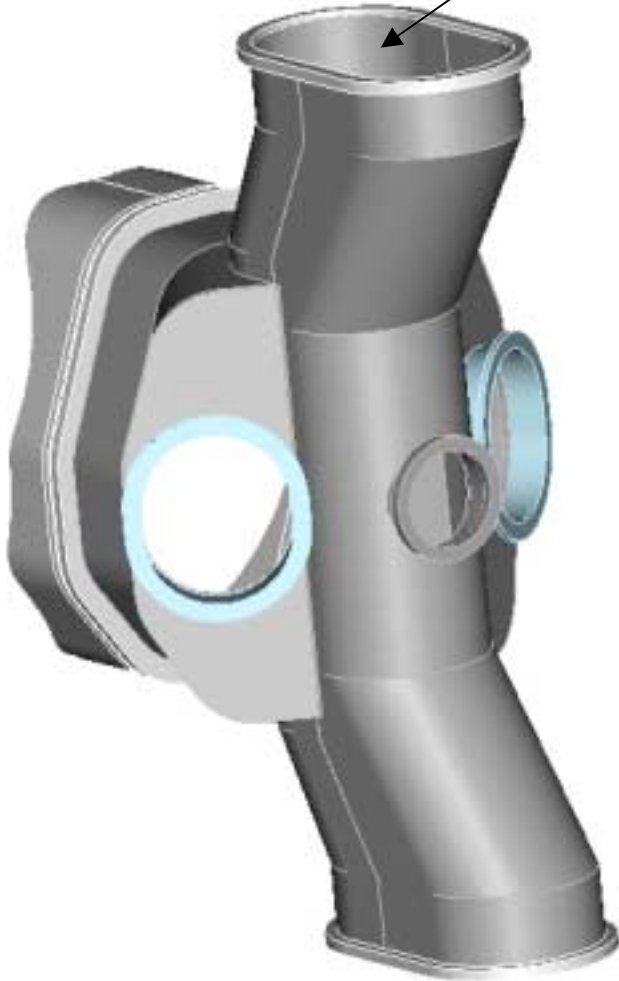


Port geometry was configured to provide clearance among port, NBI beam and modular coil.

SIMPLFD REP: MC_NBI_PORT

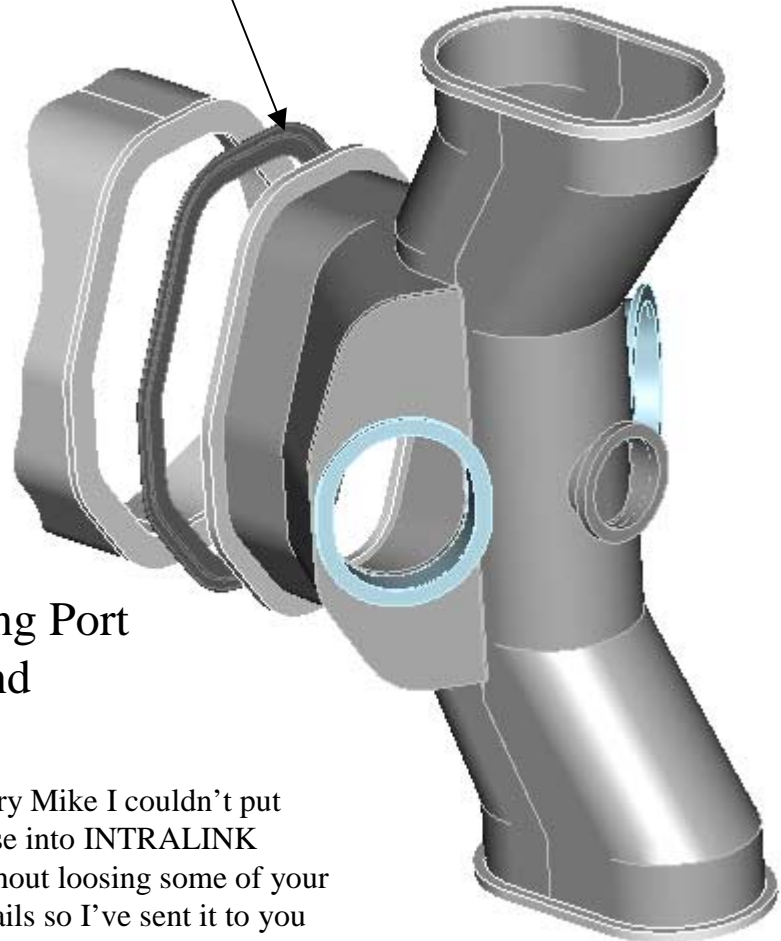
S17E122-009.ASM

Manned Access
(14" x 25")



S17E122-056.PRT
which is a part of -
009.asm

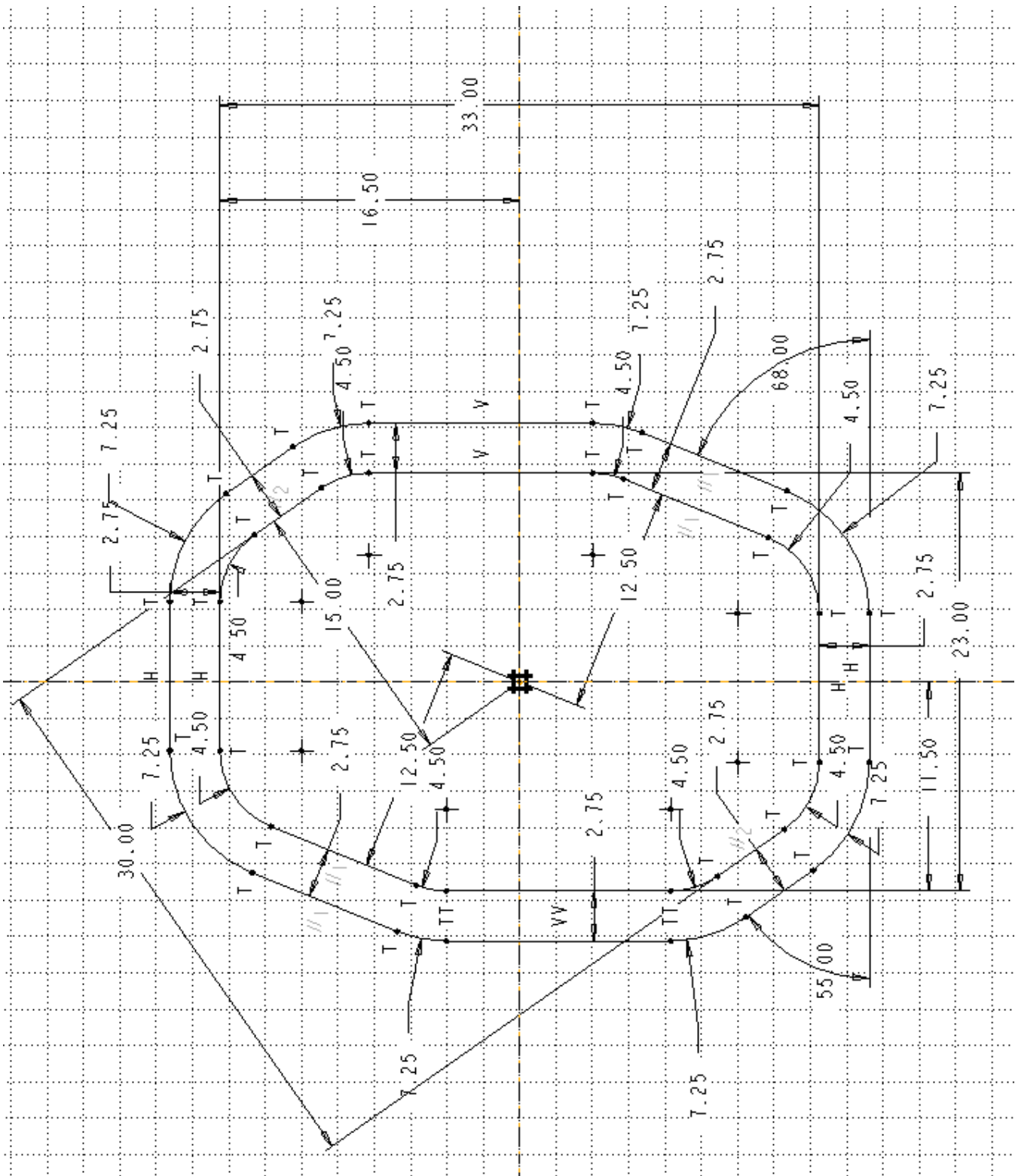
S17E122-008.ASM

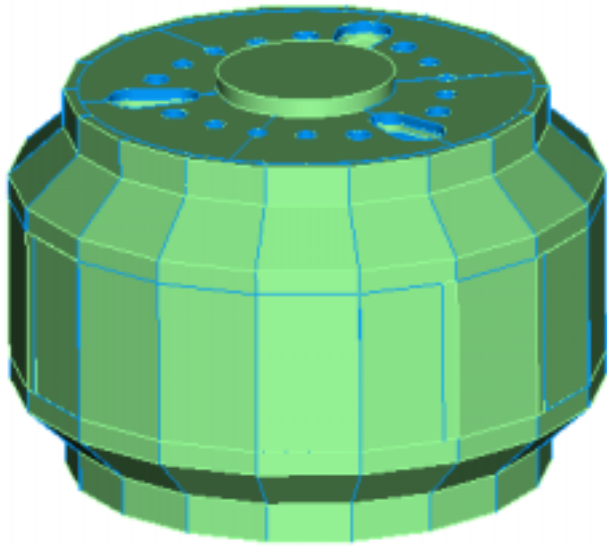


Pumping Port
end

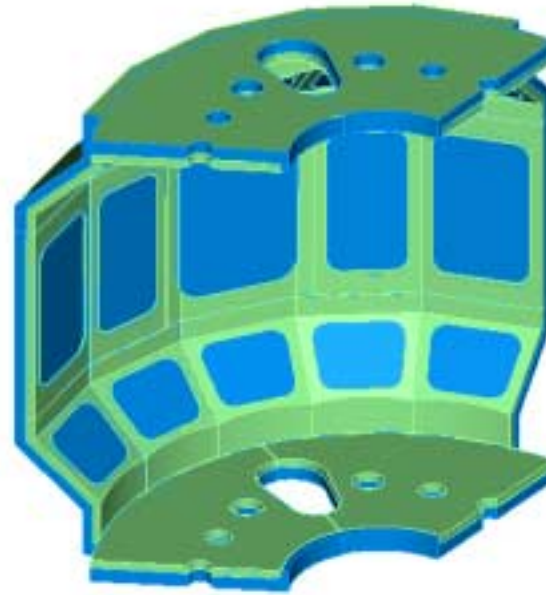
NBI Port Assembly

Sorry Mike I couldn't put these into INTRALINK without losing some of your details so I've sent it to you offline. You'll need to make some number changes.

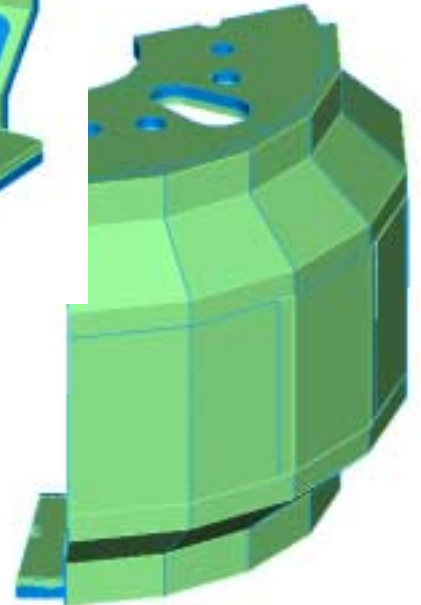




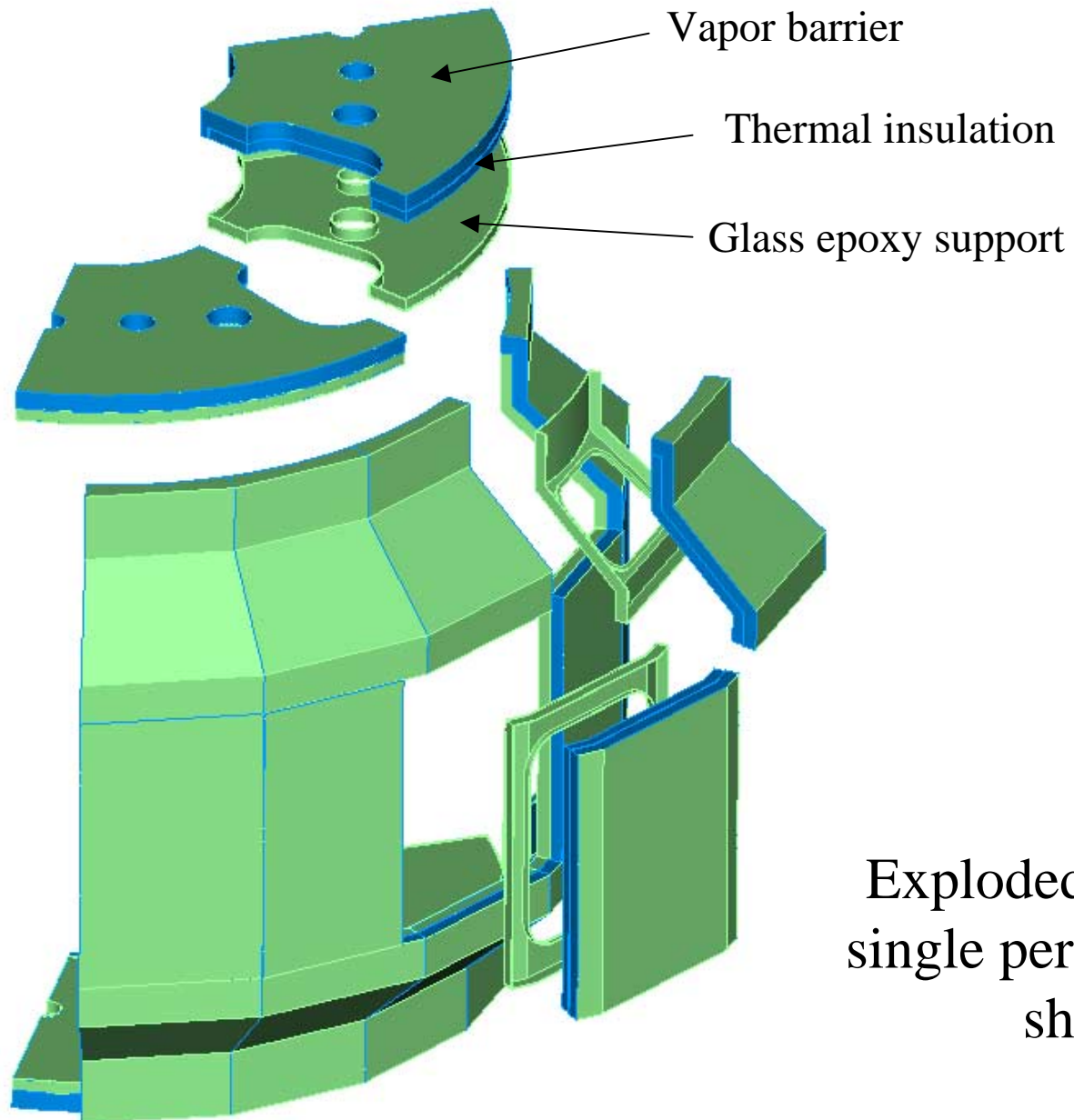
S17e150-005.asm

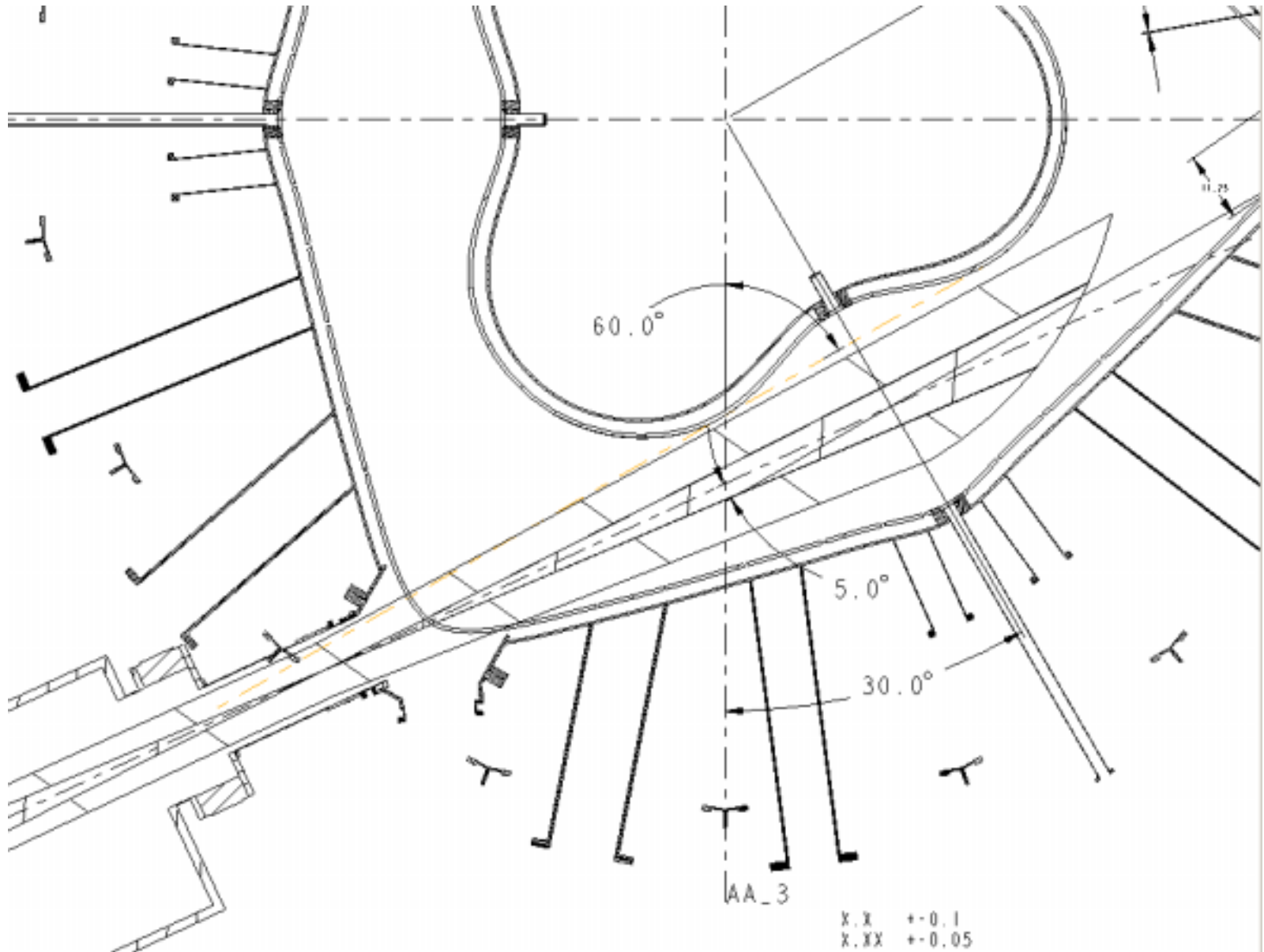


S17e150-006.asm

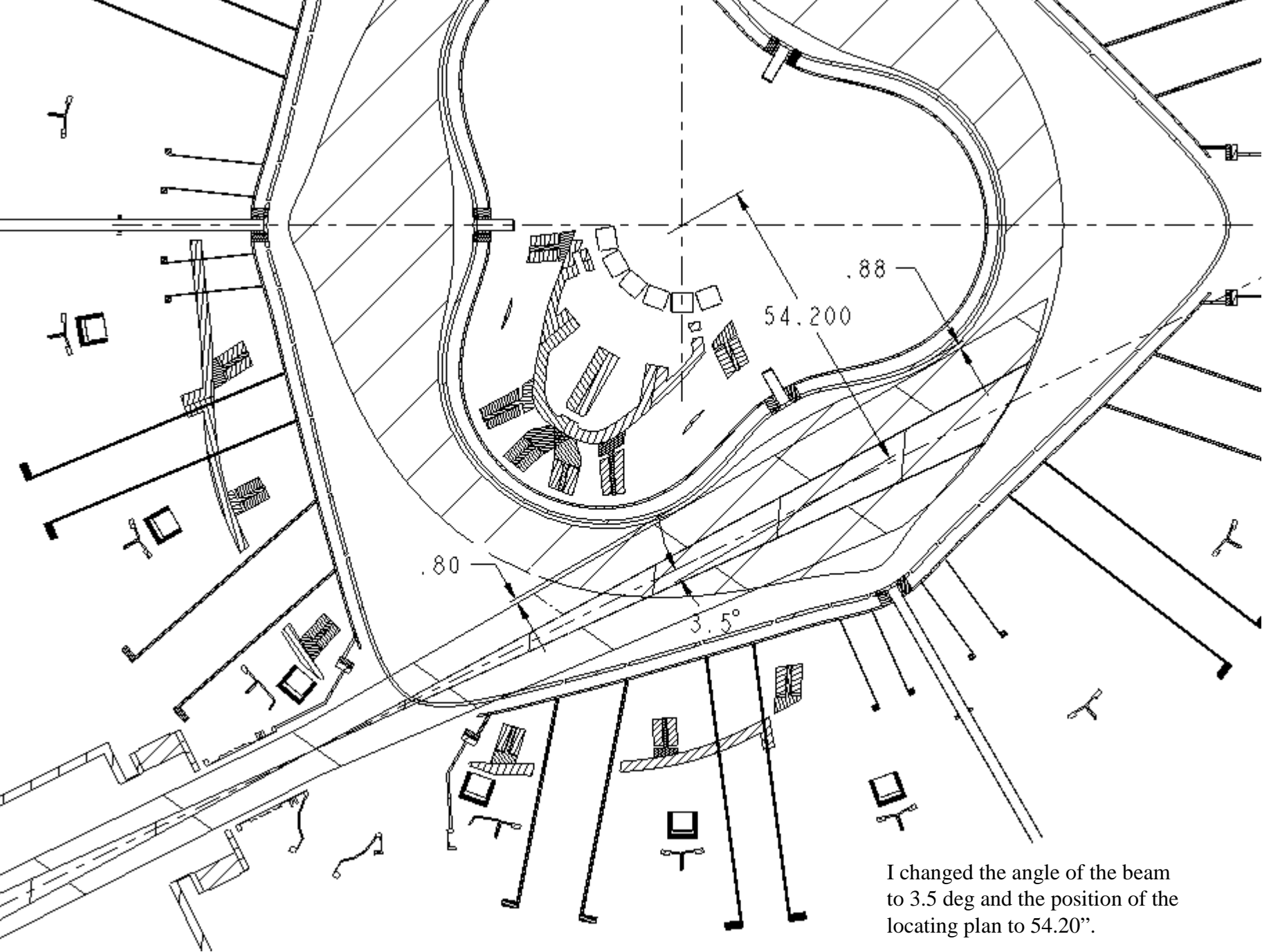


THERMAL SHIELD

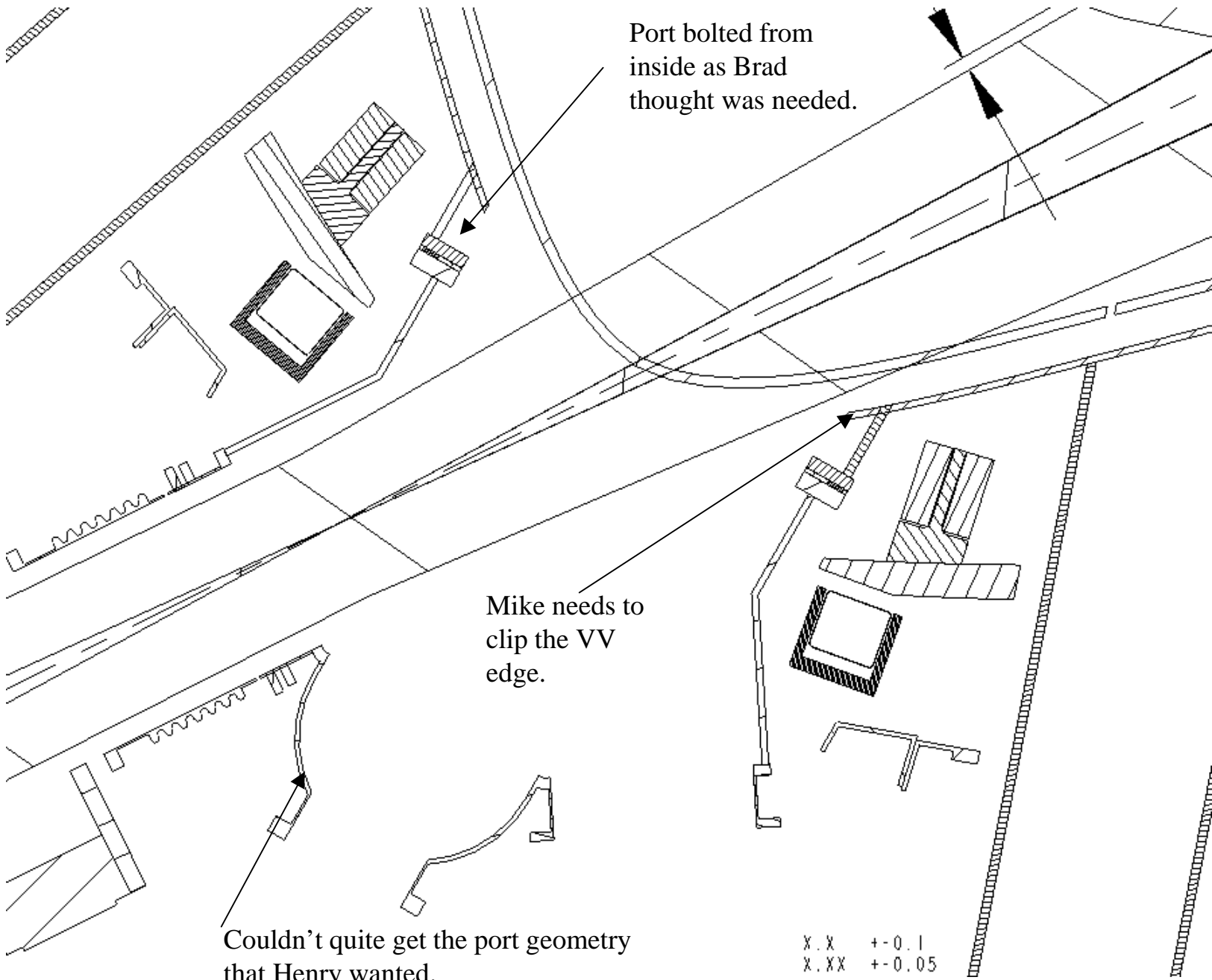




Baseline NBI position



I changed the angle of the beam to 3.5 deg and the position of the locating plan to 54.20".



Port bolted from inside as Brad thought was needed.

Mike needs to clip the VV edge.

Couldn't quite get the port geometry that Henry wanted.

X.X +-0.1
X.XX +-0.05