

Bicycle Safety

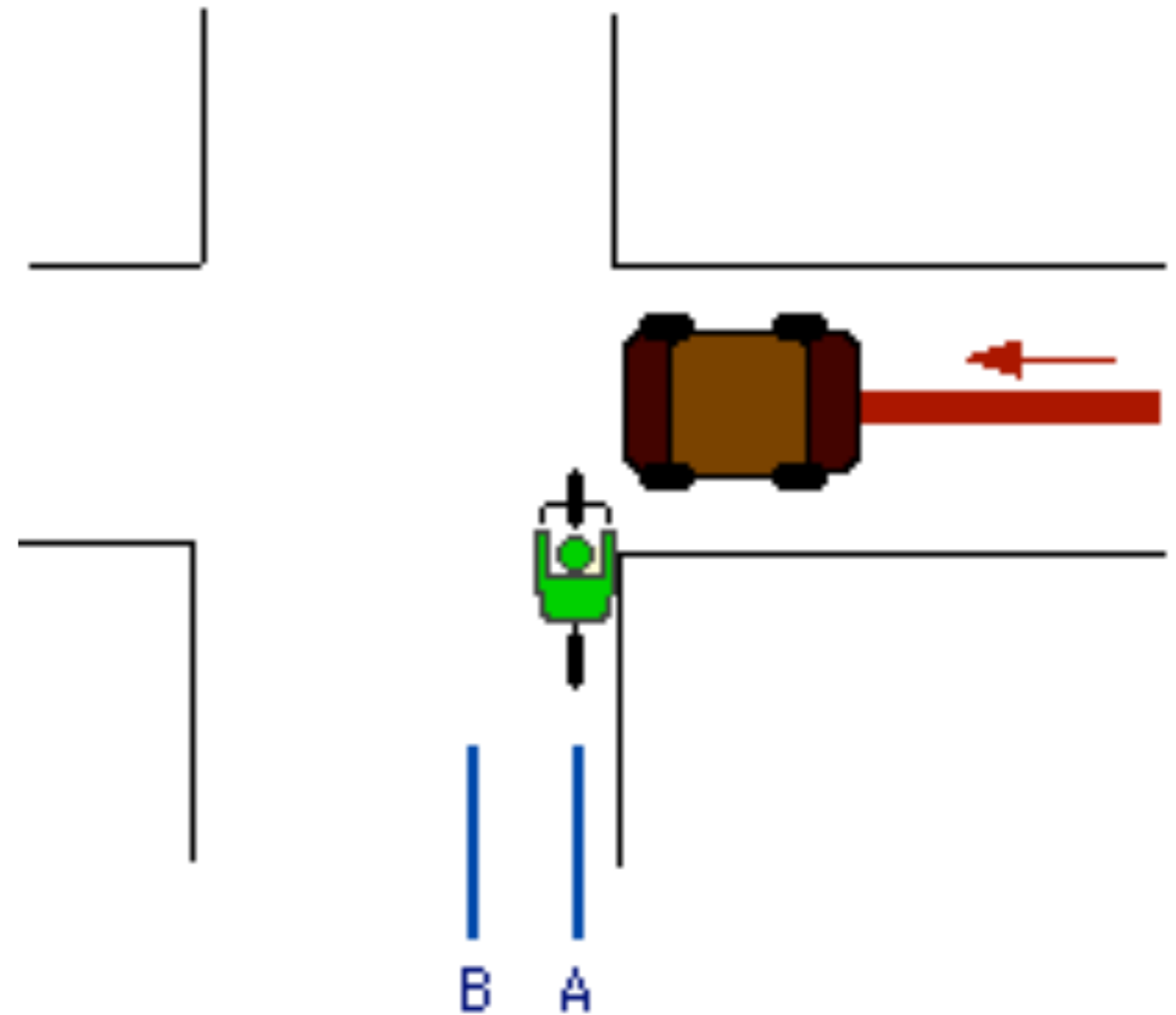
- Ride in the same direction as vehicular traffic.
- Allowed by law to move left under any of the following conditions:
 - To make a left turn from a left turn lane or pocket
 - To avoid debris, drains, or other hazardous conditions on the right
 - To pass a slower moving vehicle
 - To occupy any available lane when traveling at the same speed as other traffic
 - To travel no more than two abreast when traffic is not impeded, but otherwise ride in single file.
- Also better to move left when:
 - Cars are passing too closely due to narrow roadway
 - Heavy traffic area with lots of side streets, parking lots, or driveways ahead and to your right
 - Cars are parked on the right-hand side of the road.

Helmets

- Helmet must be properly fastened and fitted.
- Look for Standards:
 - Consumer Product Safety Commission (CPSC) effective March 10, 1999
 - Snell Memorial Foundation's 1990 Standard for Protection Headgear
 - More expensive helmets provide better ventilation, same protection
- Helmets are good for one collision, inspect frequently for cracks or damage

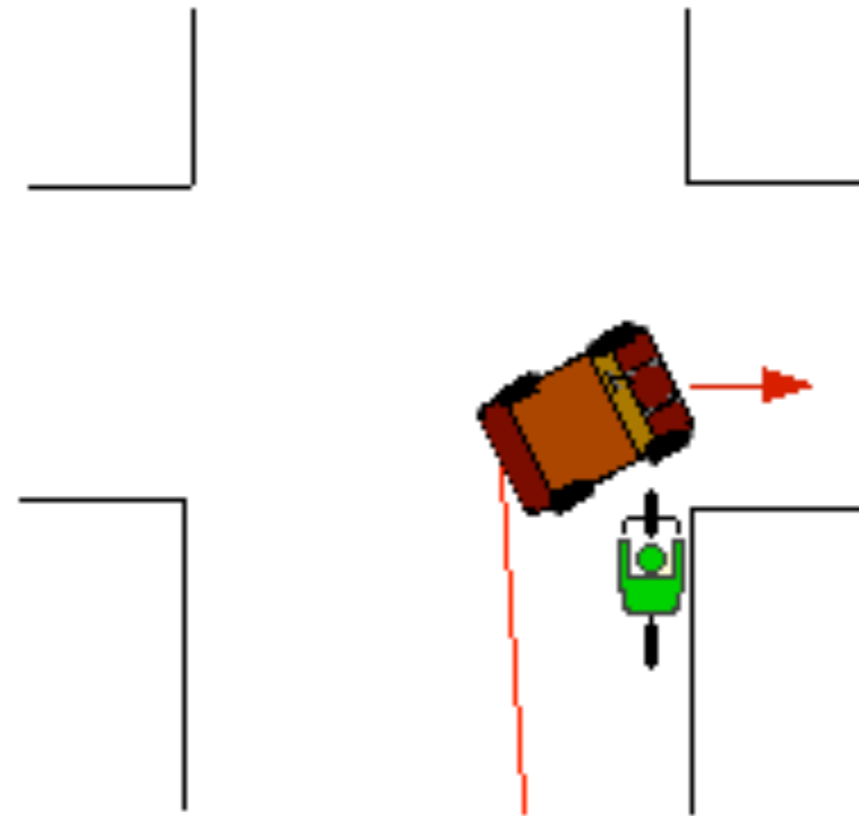
Right Cross

- Try to make eye contact
- Make yourself visible, where brightly colored clothing. Be aware of your surroundings
- Ride further to the left (line B) to allow way out



Right Hook

- Don't ride on the sidewalk
- Ride further to the left, makes it harder for driver to cut you off
- Stay out of the drivers blindspot if possible, look at his mirrors



NCSX Project Team Meeting: June 25, 2008



- Safety Minute
- June 20 Video Conference with DOE
- Final Closeout Plan & Staffing Plan
- 3-week look-ahead



Directors' All-hands memo reinforces a very important message to us all: "Do the right thing"



- STOP Training for Supervisors nearing completion
 - Provides a structured approach to
 - "seeing" safety
 - encouraging continued safe performance
 - observing, correcting, & preventing unsafe acts
 - STOP training for all employees to be rolled out next year
- Implementation of recommendations from a recent peer review of PPPL ES&H program
 - Identifying, reporting, analyzing, & responding to first-aid cases
- Commitment to address safety concerns

Importance of Safety at PPPL

PPPL'ers,

First and foremost, thank you for working safely. We do not want anyone to be hurt (at work or at home). Injuries and incidents affect the individual, families and coworkers.

Over the last several months the Laboratory has undertaken several initiatives to continue to improve safety.

We are now at about the mid-point of the "STOP" (DuPont Safety Training Observation Program) for supervisors, and are encouraged that this new tool in our Integrated Safety Management arsenal will help achieve an injury-free workplace. As part of the "homework" for the STOP training, you will be seeing supervisors performing observations of work. They will be speaking with you about working safely, and reinforcing positive safety behaviors. Occasionally, they will be talking with you about correcting unsafe behaviors and working together on actions to prevent their recurrence. You may also see them filling out cards that document their safety observations. As mentioned during last month's all hands meeting, these cards will be used to collect information for use in safety trending, and will not include names or other means to identify the persons observed. You should feel free to discuss the program with them and see the cards.

The Laboratory initiated a peer review of the Environment Safety & Health activities at the Laboratory. Experts from Pacific Northwest National Laboratory, Brookhaven National Laboratory and the Oak Ridge National Laboratory examined our systems and provided recommendations to the Director. These individuals interviewed many Laboratory staff members. They were extremely complimentary about our staff, your commitment to safety, and your dedication to make fusion work.

However, they did indicate that we might not be reporting all of our first-aid cases because of reluctance to have a negative impact on the Lab's performance metrics. Each of these experts reflected that identifying first-aid cases is much more important than the metrics and the grade given to the Laboratory. In fact, by emphasizing reporting of first-aid cases, their laboratories had initially increased rates of reported first-aid cases; however, this has allowed them to identify and fix issues before they resulted in more serious events. As a result, the overall safety at their labs has actually improved – as reflected by lower recordable and lost-time injury rates. It is extremely important that each event, no matter how minor, be reported and appropriate care obtained from the occupational medical office. They and we have had injuries, which if treated early, would have resulted in less extensive treatment as well as pain later.

We continue to address safety concerns that you have identified at our Safety Forums and submitted to the "SOS" box on the web. Everyone is encouraged to report any safety concerns to their supervisor, to an ES&H representative, or via the SOS box. Your name is not required to submit a suggestion to the SOS box. You can also view the actions taken as a result of your suggestions on the SOS web page (http://www-local.pppl.gov/eshis/Drop_box_link.html)

As leaders of this Laboratory, we want to continue to improve our systems and processes to make sure we perform our work activities safely. Your input is desired and welcomed. Thanks!

Team Mtg June 25, 2008

DOE Video Conference held on June 20 to discuss MIE Project Closeout & Risk-Reduction Engineering R&D Plans



- Meeting Objectives
 - Provide DOE look-ahead at cost, scope, & schedule to perform NCSX MIE Closeout
 - Provide prioritized list of stellarator risk reduction engineering R&D activities that will reduce future risks for construction of a stellarator in the future, maximizing what has been learned from the NCSX project
- Proposed MIE Scope:
 - Document work to date
 - Inventory and store all materiel
 - Complete modular & TF coil fabrication, & coils structures final design review
 - Complete welding 2 HFPA's & 1 HFPA trial fit up in FY08 before storing equipment
 - Terminate \$72.9M of scope presented at April Lehman Review
- Proposed R&D Ideas
 - Assembly Joint & Vacuum Vessel Welding
 - Thermal Insulation
 - Dimensional Control of Large Assembled Components
 - Cryostat / Cryogenics

Activity ID	Activity Description	Forecast Start	Forecast Finish	% cmplt	ETC	FY08												FY09												FY10																																																			
						J				J				A				S				O				N				D				J				F				M				A				M				J				J				A				S				O				N				E			
Included Closeout Scope																																																																																	
Brown																																																																																	
Job: 1803/1805- FPA Tooling/Constr-BROWN																																																																																	
Station 3-Modular Coil to VVSA Assembly																																																																																	
1803S3-4	Generate laser screen trace drawings (1/2 period)	15AUG08	05SEP08		10,688.40	SMITH etc =40hr ; MORRIS etc =40h																																																																											
1803S3-6	Station 3 simulation detail model	02JUN08*	30JUN08		22,704.00	BROWN etc =24hr ; SMITH etc =120																																																																											
1803S3-7	VV/MC clearance study (for VVSA1)	01APR08A	30JUN08	75	1,537.80	SMITH etc =10hr ;																																																																											
1803S3-9	Oversite, cost and schedules, reviews	31JAN08A	30SEP08	LOE	3,520.75	BROWN etc =20hr ;																																																																											
1805S3-2	Left side base grout plates	24MAR08A	30JUN08	99*	2,620.62	41etc =02\$K ;																																																																											
1805S3-3	MCHP lift fixture frame weldment	24MAR08A	30JUN08	99*	9,091.44	41etc =07\$K ;																																																																											
1805S3-4	Lift fixture mounting bracket weldments	24MAR08A	30JUN08	99*	14,717.70	41etc =12\$K ;																																																																											
1805S3-5	Reworked laser frame structure	24MAR08A	30JUN08	99*	1,117.80	41etc =01\$K ;																																																																											
1805S3-6	Right inboard laser frame structure	24MAR08A	30JUN08	99*	1,055.70	41etc =01\$K ;																																																																											
1805S3-7	Left inboard laser frame structure	24MAR08A	30JUN08	99*	844.56	41etc =01\$K ;																																																																											
1805S3-8	Laser screen lexan sheet (1/8 x 48" x 96")	24MAR08A	30JUN08	99*	546.48	41etc =00\$K ;																																																																											
1805S3-9	Estimate for Station 2 type alignment system	24MAR08A	30JUN08	99*	4,024.08	41etc =03\$K ;																																																																											
1805S3-100	Hardware & Misc items	24MAR08A	30JUN08	99*	1,242.00	41etc =01\$K ;																																																																											
1805S3-110	Misc assembly Cost	24MAR08A	30JUN08	99*	10,060.20	41etc =08\$K ;																																																																											
1805S3-201	MC base support system (left / rt side)	24MAR08A	30JUN08	99*	15,512.58	41etc =12\$K ;																																																																											
1805S3-202	Hilman roller - 8-OT plus R & U guides	24MAR08A	30JUN08	99*	2,943.54	41etc =02\$K ;																																																																											
1805S3-203	AirLoc Wedgmount Precision Levelers	24MAR08A	30JUN08	99*	707.94	41etc =01\$K ;																																																																											
1805S3-204	Lift fixture mounting bracket weldments	24MAR08A	30JUN08	99*	4,409.10	41etc =04\$K ;																																																																											
1805S3-205	Estimate for Station 2 type alignment system	24MAR08A	30JUN08	99*	1,204.74	41etc =01\$K ;																																																																											
1805S3-206	Hardware & Misc items	24MAR08A	30JUN08	99*	372.60	41etc =00\$K ;																																																																											
1805S3-207	Misc assembly Cost	31JAN08A	30SEP08		5,005.26	41etc =04\$K ;																																																																											
Job: 8203 - Design Integration-BROWN																																																																																	
8203FY08-4	General integration activities	01FEB08A	30SEP08	LOE	13,991.20	BROWN etc =40hr ; EA/DM etc =60h																																																																											
Brooks																																																																																	
Job: 8204 - Systems Analysis-BROOKS																																																																																	
8204-FY08Z	Syst Analysis, studies & tech assurance FY08 etc	02JUN08*	30SEP08	LOE	41,999.27	BROOKS ZHANG etc =107hr ; FAN etc =79hr ;																																																																											
Chrzanowski																																																																																	
Job: 1302 - PF Design -CHRZANOWSKI																																																																																	
1302-275	Resolve FDR Chits	22FEB08A		90	0.00	CHRZANOWSKI etc =00hr ;																																																																											
Job: 1352 - PF Coil Procurement-CHRZANOWSKI																																																																																	
PF Coil Fabrication																																																																																	
141-038.1	PF Conductor cancellation cost	21FEB08A	18JUL08	C	93,150.00	41etc =75\$K ; CHRZANOWSKI etc =00hr ;																																																																											
Job: 1408 - MC Winding Supplies-CHRZANOWSKI																																																																																	
1408-3	Misc and safety supplies (\$7k/mo.)	23MAY07A	31JUL08	LOE	7,452.00	41etc =06\$K ;																																																																											
1408-6	VPI clean manifold contract	23MAY07A	31JUL08	80	2,484.00	41etc =02\$K ;																																																																											
1408-8	Cutting hardware for flange bolts	23MAY07A	31JUL08	LOE	534.06	41etc =.5\$K ;																																																																											
1408-7	Misc tech shop support	23MAY07A	31JUL08	80	10,108.16	EMT/TB etc =128hr ;																																																																											

Activity ID	Activity Description	Forecast Start	Forecast Finish	% cmplt	ETC	FY08												FY09												FY10																																																			
						J				J				A				S				O				N				D				J				F				M				A				M				J				J				A				S				O				N				E			
Job: 1451 - Mod Coil Winding-CHRZANOWSKI																																																																																	
Station 3-Casting Prep & Winding																																																																																	
P1-170	Instl Chill Plates,Tubing,Bag A6	02JUN08	01JUL08		57,490.16	EM/TB												etc =728hr ;																																																															
Station 5-VPI																																																																																	
P1-171V	VPI (Station 5) A6	02JUL08	29JUL08		47,514.31	EM/TB												etc =281hr ; EM2/TB												etc =27																																																			
P3-171VM	COMPLETE VPI OF 18th MOD COIL		29JUL08		0.00	EMT/TB												etc =16hr ;																																																															
Station 1 Post VPI																																																																																	
P2-171C	Final Clamps & Warm Test (Station1) B6	01JUL08*	23JUL08		24,006.88	EM/TB												etc =272hr ; EMT/TB												etc =32																																																			
P1-171C	Final Clamps & Warm Test (Station1) A6	30JUL08	20AUG08		24,006.88	EM/TB												etc =272hr ; EMT/TB												etc =32																																																			
LOE Oversight & Supervision																																																																																	
145XSPRV-3	Winding Engineering oversight and supervision	01MAY07A	30SEP08	LOE	42,266.43	LANGISH												etc =275hr ;																																																															
145XSPRV-A	Winding Engineering oversight and supervision	01NOV07A	29AUG08	LOE	84,677.10	CHRZANOWSKI												etc =241hr ; MEIGHAN												etc =321																																																			
Job: 1459 - Mod Coil Fabr.Punch List-CHRZANOWSKI																																																																																	
Punchlist Tech shop/RESA																																																																																	
PLTS-C5	Grinding & Drill Holes -C5	01MAY08A	29AUG08	83	3,221.98	EM/TB												etc =41hr ;																																																															
PLTS-A5	Grinding -A5	01MAY08A	29AUG08	0	6,949.36	EM/TB												etc =88hr ;																																																															
PLTS-B5	Grinding -B5	01MAY08A	29AUG08	0	9,476.40	EM/TB												etc =120hr ;																																																															
PLTS-A6	Grinding -A6	01MAY08A	29AUG08	20	3,095.62	EM/TB												etc =39hr ;																																																															
PLTS-B6	Grinding -B6	01MAY08A	29AUG08	0	9,476.40	EM/TB												etc =120hr ;																																																															
PLTS-C6	Grinding & Drill Holes -C6	01MAY08A	29AUG08	23	14,593.66	EM/TB												etc =185hr ;																																																															
Punchlist- Coil Technicians																																																																																	
PLCT-A6	Insul,measure,TC,SG other punch list-A6	01OCT07A	29AUG08	36	10,411.40	EM/TB												etc =132hr ;																																																															
PLCT-B6	Insul,measure,TC,SG other punch list-B6	01OCT07A	29AUG08	36	10,411.40	EM/TB												etc =132hr ;																																																															
Cole																																																																																	
Job: 1416 - Mod Coil Type AB Fnl Dsn-COLE																																																																																	
Analysis and closeout documentation																																																																																	
1416-601	Prepare EM and structural analysis of leads	31JAN08A	30JUN08	70	9,966.00	williamson												etc =66hr																																																															
1416-650	Prepare cooling analysis of lead area	02JUN08*	30JUN08		3,020.00	freudenberg												etc =160hr ;																																																															
1416-651	2D cooling analysis for mod colis	02JUN08*	30JUN08		12,080.00	freudenberg												etc =80hr ;																																																															
ECN Modifications																																																																																	
1416-801	ECN Mods-Resize vertical port boot	02JUN08	30JUN08	80	3,624.00	lovet												etc =24hr ;																																																															
1416-802	ECN Mods-Revise Type B cooling lines	01MAY08A	30JUN08	80	1,812.00	lovet												etc =12hr ;																																																															
1416-803	ECN Mods-Issue DXF shim files for fab	02JUN08*	30JUN08	80	3,020.00	lovet												etc =20hr ;																																																															
1416-805	ECN Mods-Add TC's at bottom of 101,102,103 dwgs	01MAY08A	30JUN08	80	2,416.00	lovet												etc =16hr ;																																																															
1416-806	ECN Mods-Revise dwg 123-151	02JUN08*	30JUN08	80	1,510.00	lovet												etc =10hr ;																																																															
Job: 1421 - Mod Coil Interface Design-COLE																																																																																	
Inboard Interface-CC																																																																																	
1421-3155	Resolve C-C shim FDR comments	02JUN08*	30JUN08		18,120.00	COLE												etc =120hr ;																																																															
1421-9000	Perform shear test	02JUN08*	18JUL08	60	31,710.00	moon												etc =120hr ; freudenberg=40 ornlem=50																																																															
Job: 1901 - Stellarator Core Mngt&Integr-COLE																																																																																	
191 - Stellarator Core Management & Oversight																																																																																	
1901-08	WBS 191 FY08	01OCT07A	29SEP08	LOE	28,889.32	COLE												etc =121hr ; NELSON												etc =70																																																			
1901-9000	Update drawing tree	01OCT07A	29SEP08	LOE	24,160.00	lovet												= 160																																																															
192 - Stellarator Core Integr & Global Analysis																																																																																	
1902-08	WBS 192 FY08	01OCT07A	29SEP08	LOE	66,445.34	COLE												etc =121 m&s =20 travel= 10												etc =182																																																			
193 - Risk Mitigation Tasks																																																																																	
RISK-43	Bolt preload could relax with time.	03MAR08A	26AUG08		7,852.00	FOGARTY												etc =52hr ;																																																															

Activity ID	Activity Description	Forecast Start	Forecast Finish	% cmplt	ETC	FY08				FY09				FY10						
						J	J	A	S	O	N	D	J	F	M	A	M	J	J	A
Job: 1806 - FP Assembly specs and drawings-COLE																				
Station 3-Modular Coil to VVSA Assembly																				
1803-301	Station 3 Assembly Specification	02JUL07A	30JUN08	80	3,624.00	COLE	etc =24hr ;													
1803-305	Station 3 Assembly Drawings	02JUL07A	30JUN08	80	2,416.00	COLE	etc =16hr ;													
Dahlgren																				
Job: 1702 - Base Support Struct Design-DAHLGREN																				
1702-525M Base Support Structure FDR																				
1702-525M	Base Support Structure FDR		30MAY08A	100	0.00															
1702-530	FDR labor cost (accounting lag)	02JUN08	13JUN08		11,688.80	DAHLGREN	etc =40hr ; CRUIKSHANK etc =40h													
Job: 1501 - Coil Structures Design-DAHLGREN																				
1501-533 Detail CAD Drawings,BOM																				
1501-533	Detail CAD Drawings,BOM	01JUN07A	30JUN08	75	21,319.30	DAHLGREN	etc =05hr ; RUSHINSKI etc =89h CRUIKSHANK etc =89hr ;													
1501-533F	Integrated Stress Analysis	01OCT07A	30JUN08	75	34,286.56	DAHLGREN	etc =154hr ; FAN=etc=40													
1501-536	Issue dwgs for review		30JUN08*		0.00															
1501-549	Update C.S.Support Attacgmt Design	01MAY08A	09JUN08	75	2,036.70	DAHLGREN	etc =05hr ; RUSHINSKI etc =10h													
1501-562	Prepare Specs for Coil Structure & CSS h/w	24JUN08	30JUN08		3,542.00	DAHLGREN	etc =20hr ;													
1501-537	FDR Prep	24JUN08	30JUN08		12,370.68	DAHLGREN	etc =38hr ; RUSHINSKI etc =49h													
1501-541	Coil Support Structures - FDR		30JUN08		0.00															
Dudek																				
Job: 1431 - Mod. Coil Interface Hardware-DUDEK																				
Shims-Outboard																				
1431-100	Complete PE007965 & 8090 with zenex	02JUN08	27JUN08		84,331.80		41etc =68\$k ;													
Shims-Inboard																				
1431-110	Complete PE007677 with white engr	02JUN08	27JUN08		12,705.66		41etc =10\$k ;													
Ellis																				
Job: 8205 - Dimensional Control Coordin-ELLIS																				
Station 3-Modular Coil to VVSA Assembly																				
METFY08R	Support FPA Station 2	01FEB08A	30SEP08	LOE	14,889.60		ELLIS etc =45hr ; SMITH etc =45h													
METDCP-3	Dimensional control plans for station 3	01FEB08A	10JUN08	67	4,675.44	ELLIS	etc =26hr ;													
STAT3 PREP	Station 3 preparations	01JUL08*	02SEP08		14,168.00	ELLIS	etc =80hr ;													
Goranson																				
Job: 1601 - Coil Services Design-GORANSON																				
161 - LN2 Distribution																				
191-002	Coil Serv-LN2 manifolds&piping-PDR prep etc	03JUN08	05JUN08		6,040.00	GORANSON	etc =40hr ;													
162-217	PDR		05JUN08		0.00															
162-900	Update LN2 models & input to INTRALINK	02JUN08	30JUN08		18,120.00	homescu	etc =40hr mcginnis=80													
162-901	Update Electrical Leads Models & input to INTRAL	02JUN08	30JUN08		6,040.00	mcginnis	etc =40hr ;													
Harris																				
Job: 8102 - NCSX MIE Management ORNL-HARRIS																				
810.105XX Project Management Office ORNL FY08 (LOE)																				
810.105XX	Project Management Office ORNL FY08 (LOE)	01FEB08A	29SEP08	LOE	100,619.47		ORNL35 etc =07\$; HILLIS etc =70 ; HARRIS etc =282 MMORRIS etc =176 ;													
810.105Z	Project Management Office ORNL FY09 (LOE)	01OCT08*	31MAR09	LOE	35,930.73		HILLIS etc =45 ; HARRIS etc =110													
Heitzenroeder																				
Job: 8202 - Engr Mgmt & Sys Eng Sprt-HEITZENROED																				
8205DC document control & admin support																				
8205DC	document control & admin support	01FEB08A	31MAR09	LOE	23,630.52		SUCH etc =142hr ; TYRELL etc =21													
8205FY08.2	Engr mgt & systems engr FY08	01FEB08A	30SEP08	LOE	181,477.20		HEITZENROED etc =445hr ; SIMMONS etc =00 REIERSEN etc =89hr ; DUDEK etc =474 VONHALLE etc =89hr ;													

Activity ID	Activity Description	Forecast Start	Forecast Finish	% cmlpt	ETC	FY08												FY09												FY10																																																			
						J				J				A				S				O				N				D				J				F				M				A				M				J				J				A				S				O				N				E			
8205FY09	Engr mgt & systems engr FY09	01OCT08*	31MAR09	LOE	157,899.44																									HEITZENROED etc =315hr REIERSEN etc =126hr ; VONHALLE etc =126hr ;																																																			
Job: 8221 -Documentation Closeout-HEITZENROEDER																																																																																	
Closeout Documentation																																																																																	
8221-100	Technical data collection	01JUL08*	31OCT08		626,239.87																									SIMMONS =160hr BLANCHARD =40 BROOKS =100hr BROWN =375 CHRZANOWSKI =168hr COLE =80 DAHLGREN =40hr DODSON =40h DUDEK =32hr ELLIS =40 GORANSON =80hr Fogarty= 80 Phil =160; Kalish =56; labik =40; Langish =24 freudenberg =120 Perry =16; Raptopoulos =220; Raki =16 rushinski =335 mike morris=20 sichta =80; smith = 14; strykowsky =160; upcavage =215 viola = 158 williamson =80 Moon=10 Nelson=10; Harris= 20; Jun=100; Gentile=20; Low Morris=335																																																			
8221-251	Tech presentation/paper collection	02JUN08	29SEP08		9,902.00													HAMPTON etc =100hr ; TYRELL etc =10																																																															
8221-301	Guidance to collect data	02JUN08	29SEP08		53,130.00													SIMMONS etc =300hr ;																																																															
8221-305	Organizing and posting data	30SEP08	27MAR09		56,203.18													SIMMONS etc =300hr ;																																																															
8221-401	Finalizing and archiving key analyses/reports	02JUN08	29SEP08		137,504.00													FREUDENBERG etc =160hr ; DAHLGREN etc =16 FAN etc =160hr ; AVASARALA etc =16 ZHANG etc =160hr ;																																																															
8221-501	dell server, software, setup (non project cost)	02JUN08	29SEP08		0.00													CARROL etc =200hr ; 41etc =18\$K ;																																																															
8221-555	Comp. div support of web (non project cost)	02JUN08	29SEP08		0.00													CARROL etc =160hr ;																																																															
8221-575	Archiving doc & files in ops center	02JUN08	26MAR09		18,009.74													SUCH etc =200hr ;																																																															
8221-700	As-built Drawing Updates	01JUL08*	23DEC08		232,562.06													EA/SB Designers etc =1995hr ;																																																															
Prepare Closeout report																																																																																	
8221-601	Lessons learned report		31MAR09		0.00																																																																												
8221-605	Closeout report-Adjustments to obligations/costs		31MAR09		0.00																																																																												
8221-609	Closeout report-Baseline change control log		31MAR09		0.00																																																																												
8221-613	Closeout report-Closeout approvals		31MAR09		0.00																																																																												
8221-617	Closeout report-Contract closeout status		31MAR09		0.00																																																																												
8221-621	Closeout report-D&D planning		31MAR09		0.00																																																																												
8221-625	Closeout report-Final cost report, incl claims		31MAR09		0.00																																																																												
8221-629	Closeout report-Photographic documentation		31MAR09		0.00																																																																												
8221-633	Closeout report-Tech, cope,cost,schedule accompl		31MAR09		0.00																																																																												
8221-900	CLOSEOUT BCP		31MAR09*		0.00																																																																												
Kalish																																																																																	
Job: 1361 - TF Fabrication-KALISH																																																																																	
TF Title III and Fabrication Oversight																																																																																	
131-033C	Title III engr,inspection, support	02JAN08A	18SEP08	LOE	37,543.84													KALISH etc =71hr ; 35etc =02\$K ; 41etc =00\$K ; EM/TB etc =00hr ; MEIGHAN etc =173hr ;																																																															
TF Fabrication Contract																																																																																	
1361C-114	Fab, Test & Deliver Coil #14	27MAY08A	24JUN08	61	18,550.00													49etc =19 ;																																																															
1361C-115	Fab, Test & Deliver Coil #15	17JUL08*	17JUL08		47,220.00													49etc =47 ;																																																															
1361C-116	Fab, Test & Deliver Coil #16	08AUG08*	08AUG08		47,220.00													49etc =47 ;																																																															
1361C-117	Fab, Test & Deliver Coil #17	02SEP08*	02SEP08		47,220.00													49etc =47 ;																																																															
1361C-118	Fab, Test & Deliver Coil #18	24SEP08*	24SEP08		47,220.00													49etc =47 ;																																																															
1351-195X	ALL TF COILS DELIVERED		24SEP08		0.00																																																																												
Job: 1354 - Trim Coil Design &Procurement-KALISH																																																																																	
Trim Coil **Updated estimate**																																																																																	
TRIM-170	Complete Trim Coil Detailed Drawings	25MAR08A	30JUN08	80	12,769.36													KALISH etc =14hr ; RUSHINSKI etc =10h CRUIKSHANK etc =80hr ;																																																															
TRIM-200	Assy drawings & parts list	01APR08A	30JUN08	90	10,998.36													KALISH etc =04hr ; RUSHINSKI etc =10h CRUIKSHANK etc =80hr ;																																																															

Activity ID	Activity Description	Forecast Start	Forecast Finish	% cmplt	ETC	FY08												FY09												FY10																																																			
						J				J				A				S				O				N				D				J				F				M				A				M				J				J				A				S				O				N				E			
Neilson																																																																																	
Job: 8222 - Manuscripts and Papers - NEILSON																																																																																	
Prepare Closeout report																																																																																	
8222-900	Manuscripts, journal & papers (40 papers@40hrs)	02SEP08*	31MAR09		299,600.15																																																																												
Perry																																																																																	
Job: 8220 - Equipt Save & Facility Restora-PERRY																																																																																	
Safe and store NCSX hardware assets																																																																																	
8220-201	Coordination and oversight	02JUN08	23DEC08		60,133.75													PERRY												etc =382hr ;																																																			
8220-205	NCTC floor penetrations & PLT water htr removal	01JUL08*	12AUG08		56,248.54													41etc =21\$; EM//TB												etc =382hr ;																																																			
8220-209	Secure platform parts from CAS Bldg to NCTC	13AUG08	26AUG08		4,163.16													41etc =00\$; EM//TB												etc =48hr ;																																																			
8220-215	Secure TF Coils from Dsite MG to NCTC	11SEP08	24SEP08		3,000.86													EM//TB												etc =38hr ;																																																			
8220-219	Electr trays & hw from D-site yard to dsite pad	01JUL08*	15JUL08		6,194.13													41etc =01\$; EM//TB												etc =69hr ;																																																			
8220-223	Items f/TFTR bsmnt (incl spare MC cond) to NCTCB	01AUG08*	14AUG08		13,831.24													41etc =00\$; EM//TB												etc =172hr ;																																																			
8220-227	Portable AC units to Csite crib	27AUG08	03SEP08		631.76													EM//TB												etc =08hr ;																																																			
8220-231	Drawing closeouts and field follow-up	01OCT08*	23DEC08		27,614.00													LANGELLA												etc =200hr ;																																																			
8220-235	Large and Small shield block to Dsite pad	02SEP08*	15SEP08		2,527.04													EM//TB												etc =32hr ;																																																			
8220-239	Machine mock-up to NCTC	13AUG08	19AUG08		631.76													EM//TB												etc =08hr ;																																																			
8220-243	Welding machines to RESA	01OCT08*	07OCT08		668.56													EM//TB												etc =08hr ;																																																			
8220-247	Tools to Csite crib	01OCT08*	14OCT08		2,674.24													EM//TB												etc =32hr ;																																																			
8220-251	Measuring Equipment to MU Shop	01OCT08*	07OCT08		1,337.12													EM//TB												etc =16hr ;																																																			
8220-255	Inventory parts,material, tools to new location	01OCT08*	28OCT08		6,685.60													EM//TB												etc =80hr ;																																																			
8220-409	Crates,cabinets,parts shelves f/TFTRTC to NCTCB	01OCT08*	14OCT08		10,362.68													EM//TB												etc =124hr ;																																																			
8220-415	Coil winding station to NCTC	13AUG08	26AUG08		5,054.08													EM//TB												etc =64hr ;																																																			
8220-419	MC bolts (incl crate) to NCTCB	09SEP08	15SEP08		2,076.20													41etc =00\$; EM//TB												etc =20hr ;																																																			
8220-427	Assemble 4 remaining MC 3 packs	04AUG08	08SEP08		25,270.40													EM//TB												etc =320hr ;																																																			
8220-431	Transport MC 3 packs (6) to NCTC	09SEP08	22SEP08		5,302.48													EM//TB												etc =64hr ; 41etc =00\$;																																																			
8220-501	Autoclave- Safe all AC power	30JUL08	05AUG08		3,762.80													LANGELLA												etc =24hr ; EM//TB etc =08h																																																			
8220-505	Autoclave-Removal and store Dsite pad & NCTCB	01OCT08*	23DEC08		154,843.44													LANGELLA												etc =400hr ; EM//TB etc =11																																																			
8220-901	VV Diagnostic parts incl fab crates to NCTCB	09SEP08*	15SEP08		1,669.86													41etc =0.2\$; EM//TB												etc =18hr ;																																																			
8220-903	Move tool crib from C-site back to D-Site	09SEP08*	15SEP08		9,476.40													EM//TB												etc =120hr ;																																																			
8220-605	VV Spool piece crates to NCTCB	01JUL08*	02JUL08		473.82													EM//TB												etc = 6																																																			
8220-423	VVSA's (incl port extension crates) to NCTC	13AUG08	26AUG08		7,176.24													41etc =01\$; EM//TB												etc =72hr ;																																																			
8220-609	Yellow wedge stands to NCTC	01OCT08*	02OCT08		334.28													EM//TB												etc = 4																																																			
8220-613	Wedge cover plates to NCTC	01OCT08*	02OCT08		334.28													EM//TB												etc = 4																																																			
8220-617	5 ton lift beam to RESA	01OCT08*	02OCT08		334.28													EM//TB												etc = 4																																																			
8220-621	14 ton lift beam to RESA	01OCT08*	02OCT08		167.14													EM//TB												etc = 2																																																			
8220-625	Remove coil winding rooms & dispose	27AUG08	01OCT08		69,377.38													EM//TB												etc = 480 Langella etc = 241																																																			
8220-633	Equipment in MU machine shop-Electrical to RESA	02SEP08*	29SEP08		11,536.00													EM//TB												etc = 80Langella etc = 40																																																			
8220-641	Equipment in MU machine shop-Mechanical to RESA	02SEP08*	15SEP08		12,635.20													EM//TB												etc = 160																																																			
8220-645	Cryo pump skid- Electrical to NCTCB	02JUL08*	23JUL08		13,815.44													EM//TB												etc = 56Langella etc = 72																																																			
8220-653	Cryo pump skid- Mechanical to NCTCB	02JUL08*	16JUL08		3,790.56													EM//TB												etc = 48																																																			
8220-657	Cryostat-dispose	02JUL08*	16JUL08		3,790.56													EM//TB												etc = 48																																																			
8220-661	Interlocked cryo room-leave in place	02JUN08*	02JUN08		0.00																																																																												
8220-665	Spherical bearings (Dahlgren) to NCTCB	02JUL08*	03JUL08		78.97													EM//TB												etc = 1																																																			
8220-669	Prototype castings to NCTC	13AUG08	14AUG08		631.76													EM//TB												etc = 8																																																			
8220-673	Prototype VV cross sections-Scrap	02JUL08*	03JUL08		157.94													EM//TB												etc = 2																																																			
8220-677	TF coil fabrication fixtures to NCTC-VPI fixture	13AUG08	14AUG08		315.88													EM//TB												etc = 4																																																			
8220-681	TF coil fabrication fixtures to NCTC-Mandrel	13AUG08	14AUG08		315.88													EM//TB												etc = 4																																																			
8220-685	TF coil fabrication fixtures to NCTC-Misc fixtur	13AUG08	14AUG08		315.88													EM//TB												etc = 4																																																			

Activity ID	Activity Description	Forecast Start	Forecast Finish	% cmplt	ETC	FY08												FY09												FY10																																																			
						J				J				A				S				O				N				D				J				F				M				A				M				J				J				A				S				O				N				E			
Rej																																																																																	
Job: 8101 - Project Management &Control-REJ																																																																																	
810.900	Project Management Office PPPL FY08 (LOE)	01OCT07A	30SEP08	LOE	216,292.20													NEILSON etc =414hr ; STRYKOWSKY etc =540 B//CB etc =680hr ; 35etc =12\$; 41etc =03\$; DEPUTYPC etc =95hr ;																																																															
810.9005A	Project Management Office PPPL fy08 etc	02JUN08	30SEP08	LOE	125,600.00													DON REJ1 etc =126\$;																																																															
810.901	Project Management Office PPPL FY09 (SA LOE)	01OCT08*	31MAR09	LOE	290,785.02													NEILSON etc =335hr ; Hampton etc =484hr ; 41etc =05\$; DON REJ1 etc =100\$; SIMMONS etc =61 STRYKOWSKY etc =417																																																															
Stratton																																																																																	
Job: 3101 - Magnetic Diagnostics-STRATTON																																																																																	
Rogowski Coils																																																																																	
3101-359	Install Rogowski coils support (in job 1815)	02APR08A	20JUN08	30	28,185.66	LABIK EM/TB												etc =40hr ; GUTTADORA etc =302 etc =15hr ;																																																															
Strykowski																																																																																	
Job: 8998 - Allocations-STRYKOWSKY																																																																																	
99.08	PPPL Allocations FY08 LOE	01OCT07A	29SEP08	LOE	142,323.48													54etc =88 ;																																																															
99.09C	PPPL Allocations FY09 LOE	01OCT08*	31MAR09	LOE	59,465.00													54 etc =35																																																															
Viola																																																																																	
Job: 1802 - FP Assy Oversight&Support-VIOLA																																																																																	
Oversight and Supervision																																																																																	
1802ORN02	ORNL Title III field period assy station 2/3	02JUN08	30SEP08	LOE	13,860.00													mcginnis=140																																																															
R1802-003	Metrology Engr Super FY08	01OCT07A	30SEP08	LOE	45,122.13													PRINISKI etc =293hr ;																																																															
R1802-007	FPA Management FY08	01OCT07A	30SEP08	LOE	85,747.73													VIOLA etc =558hr ;																																																															
R1802-009	PU Title III support	02JUN08	30SEP08	LOE	62,742.24													SANDS etc =408hr ;																																																															
R1802-010	Drexel co-op student support	02JUN08	30JUN08	LOE	2,520.00	DREXEL												etc =168 ;																																																															
R1802-015	HP Coverage in the TFTR TC LOE FY08	01OCT07A	30SEP08	LOE	53,157.42													SH//TB etc =440hr ;																																																															
R1802-016	HP Coverage in the TFTR TC LOE FY09	01OCT08*	23DEC08	LOE	36,276.45													SH//TB etc =629hr ;																																																															
1802MISC	Misc materials,tools, GSA vehicle,rigging	01FEB08A	30SEP08	LOE	55,890.00													41etc =45\$;																																																															
Station 3 procedures,JHA,ACC,Training,Prep																																																																																	
R1802-307	Procedures written & approved	14APR08A			0.00																																																																												
R1802-309	JHA completed	02JUN08	09JUN08		0.00																																																																												
R1802-311	Training needs identified & released	10JUN08	17JUN08		0.00																																																																												
R1802-313	ACC review completed	18JUN08	25JUN08		0.00																																																																												
R1802-315	Pre-job brief completed	26JUN08	03JUL08		0.00																																																																												
R1802-320	Update FPA cost estimate for FPA station 2&3	14OCT08	20OCT08		0.00																																																																												
Job: 1810 - Field Period AssyStation 1,2,3 VIOLA																																																																																	
General Assy Support																																																																																	
R1810-003	LOE Crane support, fixture setupfor FY08	01OCT07A	30SEP08	LOE	55,605.94													EM//TB etc =704hr ;																																																															
R1810-025	Crane & Rigging inspections	01FEB08A	30SEP08	LOE	3,948.50													EM//TB etc =50hr ;																																																															
R1810-007	LOE Field Supervision for FY08	01OCT07A	30SEP08	LOE	79,035.61													EDWARDS etc =587hr ;																																																															
R1810-2001	Misc Hardware and hardware rework (1/2 fte loe)	01FEB08A	30SEP08	LOE	23,691.00													EM//TB etc =300hr ;																																																															
S21-4.02	Perform routine metrology set-up and checks (loe)	01FEB08A	30SEP08	LOE	61,094.25													ZMET etc =525 ;																																																															
Setup																																																																																	
R1810-2034	Misc Tool and Hardware	02JUN08	30SEP08	LOE	18,630.00													41etc =15\$;																																																															
Pre-Measuring and fitup checks																																																																																	
Pre measurement of MCHP A2,B2,C2 flanges																																																																																	
2-2-2.99	Drill Stycast fill holes C2	01JUL08*	03JUL08		9,476.40	EM//TB												etc =120hr ;																																																															
S22-3.02	Compress shims sort by thickness	01MAY08A	11AUG08	50	3,158.80	EM//TB												etc =40hr ;																																																															

Activity ID	Activity Description	Forecast Start	Forecast Finish	% cmplt	ETC	FY08													FY09					FY10														
						J	J	A	S	O	N	D	J	F	M	A	M	J	J	A	S	O	N	E														
Station 2 MC subassy A1B1C1																																						
AB-C MC Assembly																																						
2-1-7.16	"Lightly" tack weld nose flex shims	02JUN08*	02JUN08		947.64	EM/TB	etc =12hr ;																															
2-1-7.17	remove "C" coil & place it on a separate fixtur	03JUN08	03JUN08		3,790.56	EM/TB	etc =48hr ;																															
2-1-7.18	Recheck part alignment & weld all Type-B flex s	04JUN08	06JUN08		6,702.91	EM//TB	etc =00hr ; ZMET											etc =58																				
2-1-7.19	After welding "B" coil nose shims recheck align	09JUN08	09JUN08		2,234.30	EM//TB	etc =00hr ; ZMET												etc =19																			
2-1-7.20	Back office assessment of part after weld	10JUN08	11JUN08		4,468.61	EM//TB	etc =00hr ; ZMET												etc =38																			
2-1-7.21	Measure "C" fiducials	10JUN08	10JUN08		2,234.30	EM//TB	etc =00hr ; ZMET												etc =19																			
2-1-7.22	Weld all Type-C (A-flange) flex shims plasma sid	12JUN08	13JUN08		3,790.56	EM//TB	etc =48hr ;																															
2-1-7.23	After welding determine metrology acceptance	16JUN08	16JUN08		2,234.30	EM//TB	etc =00hr ; ZMET												etc =19																			
2-1-7.24	Back office assessment	17JUN08	18JUN08		4,468.61	EM//TB	etc =00hr ; ZMET												etc =38																			
2-1-7.25	Remove shims for alignment mating coil	17JUN08	16JUN08		0.00	EM//TB	etc =00hr ;																															
2-1-7.07	Place unfilled shim bags in wing areas	17JUN08	17JUN08		1,895.28	EM//TB	etc =24hr ;																															
2-1-7.26	Lower mating "C" coil into position.	19JUN08	19JUN08		3,790.56	EM//TB	etc =48hr ;																															
2-1-7.261	alignment "C" coil tooling balls	20JUN08	20JUN08		2,234.30	EM//TB	etc =00hr ; ZMET												etc =19																			
2-1-7.27	position coil accurately in x, y, & z directio	23JUN08	23JUN08		1,895.28	EM//TB	etc =24hr ;																															
2-1-7.28	Install shims;studs,, & "wiggle"	24JUN08	24JUN08		2,842.92	EM//TB	etc =36hr ;																															
2-1-7.29	Torque50% of final value.	25JUN08	25JUN08		947.64	EM//TB	etc =12hr ;																															
2-1-7.30	Measure position of all monuments	26JUN08	26JUN08		3,351.46	EM//TB	etc =00hr ; ZMET												etc =29																			
2-1-7.301	Fuji paper, & examine load sharing. back office	27JUN08	30JUN08		8,259.17	EM//TB	etc =48hr ; ZMET												etc =38																			
2-1-7.302	Install new shims & Fuji paper. Lower & reposit	01JUL08	03JUL08		5,685.84	EM//TB	etc =72hr ;																															
2-1-7.303	Install shims without Fuji paper, studs & torqu	07JUL08	08JUL08		3,790.56	EM//TB	etc =48hr ;																															
2-1-7.31	Adjust shims locally. Re-torque all studs50%.	09JUL08	10JUL08		3,790.56	EM//TB	etc =48hr ;																															
2-1-7.32	Install bushing. Replace nut & tighten back50%	11JUL08	15JUL08		5,685.84	EM//TB	etc =72hr ;																															
2-1-7.33	After super bolt tightening, measure position	16JUL08	17JUL08		3,351.46	ZMET	etc =29 ; EM//TB												etc =00h																			
2-1-7.34	Tighten all boltsir final torque.	17JUL08	17JUL08		1,895.28	EM//TB	etc =24hr ;																															
2-1-7.35	After tightening hardware, meas position of monu	18JUL08	18JUL08		3,351.46	ZMET	etc =29 ; EM//TB												etc =00h																			
2-1-7.36	Weld B / C nose region solenoid side	21JUL08	23JUL08		5,685.84	EM//TB	etc =72hr ;																															
2-1-7.37	Measure positions of all monuments	24JUL08	24JUL08		2,234.30	EM//TB	etc =00hr ; ZMET												etc =19																			
2-1-7.38	Back office of above results & INSTALL wing supp	25JUL08	28JUL08		4,468.61	EM//TB	etc =00hr ; ZMET												etc =38																			
2-1-7.39	Fill all lose bushings with Stycast 2850FT	29JUL08	30JUL08		3,790.56	EM//TB	etc =48hr ;																															
Stycast shim bags & final measurements																																						
2-1-8.01	Fill all wing bladders & cure	31JUL08	01AUG08		3,790.56	EM//TB	etc =48hr ;																															
2-1-11.01	Measure tooling balls on all coils.	04AUG08	05AUG08		4,468.61	EM//TB	etc =00hr ; ZMET												etc =38																			
2-1-11.02	Install or identify three primary fiducials	06AUG08	07AUG08		4,468.61	EM//TB	etc =00hr ; ZMET												etc =38																			
2-1-11.03	Scan "B" flange Type-C coil & interfacing base	08AUG08	12AUG08		6,702.91	EM//TB	etc =00hr ; ZMET												etc =58																			
2-1-11.04	Measure bolt length on all tension fasteners	13AUG08	13AUG08		1,895.28	EM//TB	etc =24hr ;																															
2-1-11.05	Perform Electrical Megger test on each coil	14AUG08	15AUG08		3,790.56	EM//TB	etc =48hr ;																															
2-1-11.06	Mark part for identification	18AUG08	15AUG08		0.00	EM//TB	etc =00hr ;																															
2-1-11.07	Install lift support beams	18AUG08	19AUG08		7,581.12	EM//TB	etc =96hr ;																															
2-1-11.08	Remove from stand & measure weight of completed	20AUG08	20AUG08		3,790.56	EM//TB	etc =48hr ;																															
2-1-11.09	Move to holding area.	21AUG08	22AUG08		7,581.12	EM//TB	etc =96hr ;																															
S21-11.07M	Complete 1st MCHP Assy (Sta 2)		22AUG08		0.00	EM//TB	etc =00hr ;																															
2-1-11.10	Lift upper wedge & reinstall & grout at Assembly	25AUG08	08SEP08		18,952.80	EM//TB	etc =240hr ;																															
Station 2 MC subassy A2B2C2																																						
A-B MC Assembly																																						
2-2-6.26	Torque50% of final value.	02JUN08	02JUN08		789.70	EM//TB	etc =10hr ;																															
2-2-6.27	Measure position of all monuments	03JUN08	03JUN08		2,792.88	ZMET	etc =24 ; EM//TB												etc =00h																			
2-2-6.28	Adjust shims locally. Re-torque all studs50%.	04JUN08	04JUN08		10,323.96	EM//TB	etc =60hr ; ZMET												etc =48																			
2-2-6.29	Install bushing. Replace nut & tighten back 50%	05JUN08	05JUN08		4,738.20	EM//TB	etc =60hr ;																															
2-2-6.30	After super bolt tightening, measure position	06JUN08	06JUN08		2,792.88	ZMET	etc =24 ; EM//TB												etc =00h																			
2-2-6.31	Tighten all boltsir final torque.	09JUN08	09JUN08		1,579.40	EM//TB	etc =20hr ;																															
2-2-6.32	After tightening hardware, measure position	10JUN08	10JUN08		2,792.88	ZMET	etc =24 ; EM//TB												etc =00h																			
2-2-6.33	Weld A / B nose region solenoid side	11JUN08	11JUN08		10,323.96	EM//TB	etc =60hr ; ZMET												etc =48																			
2-2-6.34	Measure positions of all monuments	12JUN08	12JUN08		1,861.92	EM//TB	etc =00hr ; ZMET												etc =16																			

Activity ID	Activity Description	Forecast Start	Forecast Finish	% cmplt	ETC	FY08												FY09												FY10	
						J J A S			O N D			J F M			A M J			J A S			O N										
2-2-6.35	Review with Back Office. INSTALL wing supports	13JUN08	13JUN08		6,882.64	EM//TB				etc =40hr ; ZMET				etc =32																	
2-2-6.36	Identify, a set of monuments moved	16JUN08	13JUN08		0.00	EM//TB				etc =00hr ;																					
2-2-6.37	Fill all loose bushings with Stycast 2850FT	16JUN08	16JUN08		3,158.80	EM//TB				etc =40hr ;																					
2-2-6.38	Scan "B" flange (datum "E") of "B" coil,	17JUN08	17JUN08		1,861.92	EM//TB				etc =00hr ; ZMET				etc =16																	
2-2-6.39	define all B/C flange shim thickness.	18JUN08	18JUN08		2,369.10	EM//TB				etc =30hr ;																					
AB-C MC Assembly																															
2-2-7.01	lift (A-B) coil, along with fixture, onto anot	19JUN08	19JUN08		9,476.40	EM//TB				etc =120hr ;																					
2-2-7.02	Select a subset of monuments for initial alignm	20JUN08	20JUN08		1,861.92	EM//TB				etc =00hr ; ZMET				etc =16																	
2-2-7.03	Align set of monuments selected in 7.02.	23JUN08	23JUN08		1,861.92	EM//TB				etc =00hr ; ZMET				etc =16																	
2-2-7.04	Establish a set of global monuments	24JUN08	24JUN08		1,861.92	EM//TB				etc =00hr ; ZMET				etc =16																	
2-2-7.05	Mark nose shim locations & puck locations.	25JUN08	25JUN08		1,579.40	EM//TB				etc =20hr ;																					
2-2-7.06	Place initial set shims (4-8) on Type-B	26JUN08	25JUN08		0.00	EM//TB				etc =00hr ;																					
2-2-7.08	Lower mating "C" coil into position.	01JUL08	01JUL08		3,158.80	EM//TB				etc =40hr ;																					
2-2-7.081	Perform alignment "C" coil tooling balls	02JUL08	02JUL08		1,861.92	EM//TB				etc =00hr ; ZMET				etc =16																	
2-2-7.09	Install jack screws & dial indicators	03JUL08	03JUL08		1,579.40	EM//TB				etc =20hr ;																					
2-2-7.10	Position coil within ±.002"	07JUL08	07JUL08		1,579.40	EM//TB				etc =20hr ;																					
2-2-7.11	Install shims studs, & "wiggle"	08JUL08	08JUL08		2,369.10	EM//TB				etc =30hr ;																					
2-2-7.12	Torque50% of final value.	09JUL08	09JUL08		789.70	EM//TB				etc =10hr ;																					
2-2-7.13	Measure position of all monuments	10JUL08	10JUL08		2,792.88	EM//TB				etc =00hr ; ZMET				etc =24																	
2-2-7.14	Measure shim puck height	11JUL08	11JUL08		1,579.40	EM//TB				etc =20hr ;																					
2-2-7.15	remove puck locating rings & install all nose s	14JUL08	14JUL08		4,738.20	EM//TB				etc =60hr ;																					
2-2-7.16	"Lightly" tack weld nose flex shims	15JUL08	15JUL08		789.70	EM//TB				etc =10hr ;																					
2-2-7.17	remove "C" coil & place it on a separate fixtur	16JUL08	16JUL08		3,158.80	EM//TB				etc =40hr ;																					
2-2-7.18	Recheck part alignment & weld all Type-B flex s	17JUL08	17JUL08		5,585.76	EM//TB				etc =00hr ; ZMET				etc =48																	
2-2-7.19	After welding "B" coil nose shims recheck align	18JUL08	18JUL08		1,861.92	EM//TB				etc =00hr ; ZMET				etc =16																	
2-2-7.20	Back office assessment of part after weld	21JUL08	21JUL08		3,723.84	EM//TB				etc =00hr ; ZMET				etc =32																	
2-2-7.21	Measure "C" fiducials	21JUL08	21JUL08		1,861.92	EM//TB				etc =00hr ; ZMET				etc =16																	
2-2-7.22	Weld all Type-C (A-flange) flex shims plasma sid	22JUL08	22JUL08		3,158.80	EM//TB				etc =40hr ;																					
2-2-7.23	After welding determine metrology acceptance	23JUL08	23JUL08		1,861.92	EM//TB				etc =00hr ; ZMET				etc =16																	
2-2-7.24	Back office assessment	24JUL08	24JUL08		3,723.84	EM//TB				etc =00hr ; ZMET				etc =32																	
2-2-7.25	Remove shims for alignment mating coil	25JUL08	24JUL08		0.00	EM//TB				etc =00hr ;																					
2-2-7.07	Place unfilled shim bags in wing areas	25JUL08	25JUL08		1,579.40	EM//TB				etc =20hr ;																					
2-2-7.26	Lower mating "C" coil into position.	28JUL08	28JUL08		3,158.80	EM//TB				etc =40hr ;																					
2-2-7.261	alignment "C" coil tooling balls	29JUL08	29JUL08		1,861.92	EM//TB				etc =00hr ; ZMET				etc =16																	
2-2-7.27	position coil accurately in x, y, & z directio	30JUL08	30JUL08		1,579.40	EM//TB				etc =20hr ;																					
2-2-7.28	Install shims;studs,, & "wiggle"	31JUL08	31JUL08		2,369.10	EM//TB				etc =30hr ;																					
2-2-7.29	Torque50% of final value.	01AUG08	01AUG08		789.70	EM//TB				etc =10hr ;																					
2-2-7.30	Measure position of all monuments	04AUG08	04AUG08		2,792.88	ZMET				etc =24 ;																					
2-2-7.31	Adjust shims locally. Re-torque all studs50%.	05AUG08	05AUG08		3,158.80	EM//TB				etc =40hr ;																					
2-2-7.32	Install bushing. Replace nut & tighten back50%	06AUG08	06AUG08		4,738.20	EM//TB				etc =60hr ;																					
2-2-7.33	After super bolt tightening, measure position	07AUG08	07AUG08		2,792.88	EM//TB				etc =00hr ; ZMET				etc =24																	
2-2-7.34	Tighten all bolts to final torque.	08AUG08	08AUG08		1,579.40	EM//TB				etc =20hr ;																					
2-2-7.35	After tightening hardware, meas position of monu	11AUG08	11AUG08		2,792.88	ZMET				etc =24 ; EM//TB				etc =00h																	
2-2-7.36	Weld B / C nose region solenoid side	12AUG08	12AUG08		4,738.20	EM//TB				etc =60hr ;																					
2-2-7.37	Measure positions of all monuments	13AUG08	13AUG08		1,861.92	EM//TB				etc =00hr ; ZMET				etc =16																	
2-2-7.38	Back office of above results & INSTALL wing supp	14AUG08	14AUG08		3,723.84	EM//TB				etc =00hr ; ZMET				etc =32																	
2-2-7.39	Fill all lose bushings with Stycast 2850FT	15AUG08	15AUG08		3,158.80	EM//TB				etc =40hr ;																					
Stycast shim bags & final measurements																															
2-2-8.01	Fill all wing bladders & cure	18AUG08	19AUG08		3,158.80	EM//TB				etc =40hr ;																					
2-2-8.02	Inject stycast in all shim spaces	20AUG08	21AUG08		3,158.80	EM//TB				etc =40hr ;																					
2-2-10.0	Complete local service & interface details	22AUG08	21AUG08		0.00	EM//TB				etc =00hr ;																					
2-2-11.01	Measure tooling balls on all coils.	22AUG08	25AUG08		3,723.84	EM//TB				etc =00hr ; ZMET				etc =32																	
2-2-11.02	Install or identify three primary fiducials	26AUG08	27AUG08		3,723.84	EM//TB				etc =00hr ; ZMET				etc =32																	
2-2-11.03	Scan "B" flange Type-C coil & interfacing base	28AUG08	02SEP08		5,585.76	EM//TB				etc =00hr ; ZMET				etc =48																	
2-2-11.04	Measure bolt length on all tension fasteners	03SEP08	03SEP08		1,579.40	EM//TB				etc =20hr ;																					

