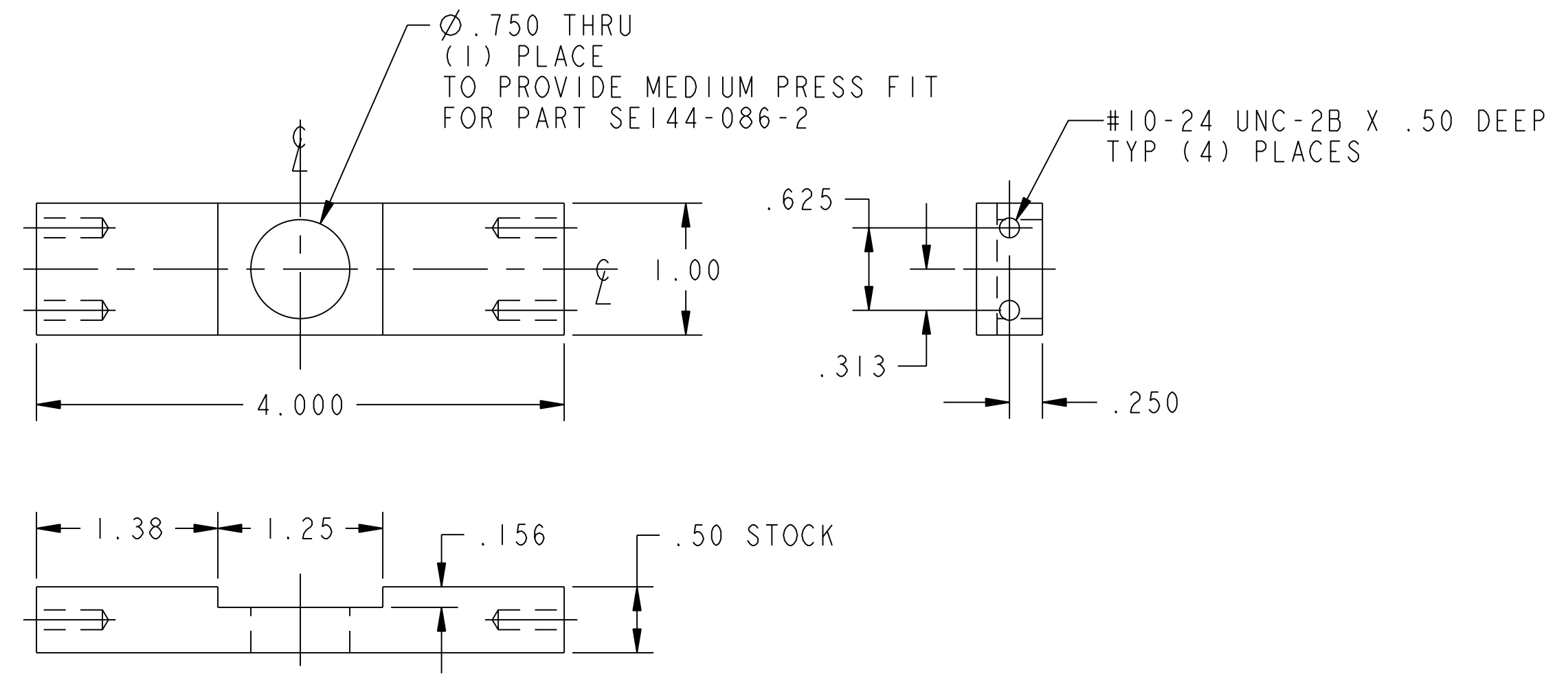
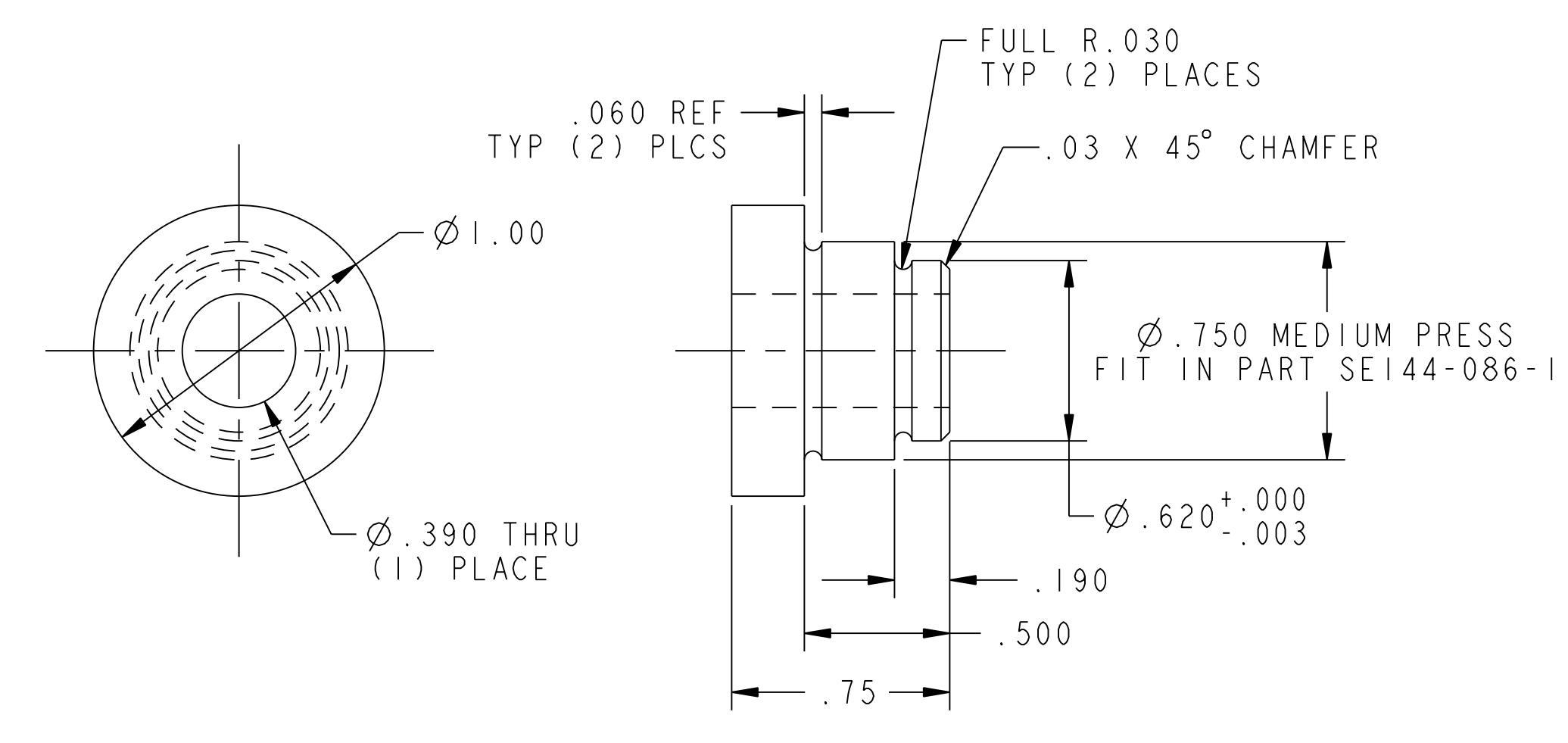


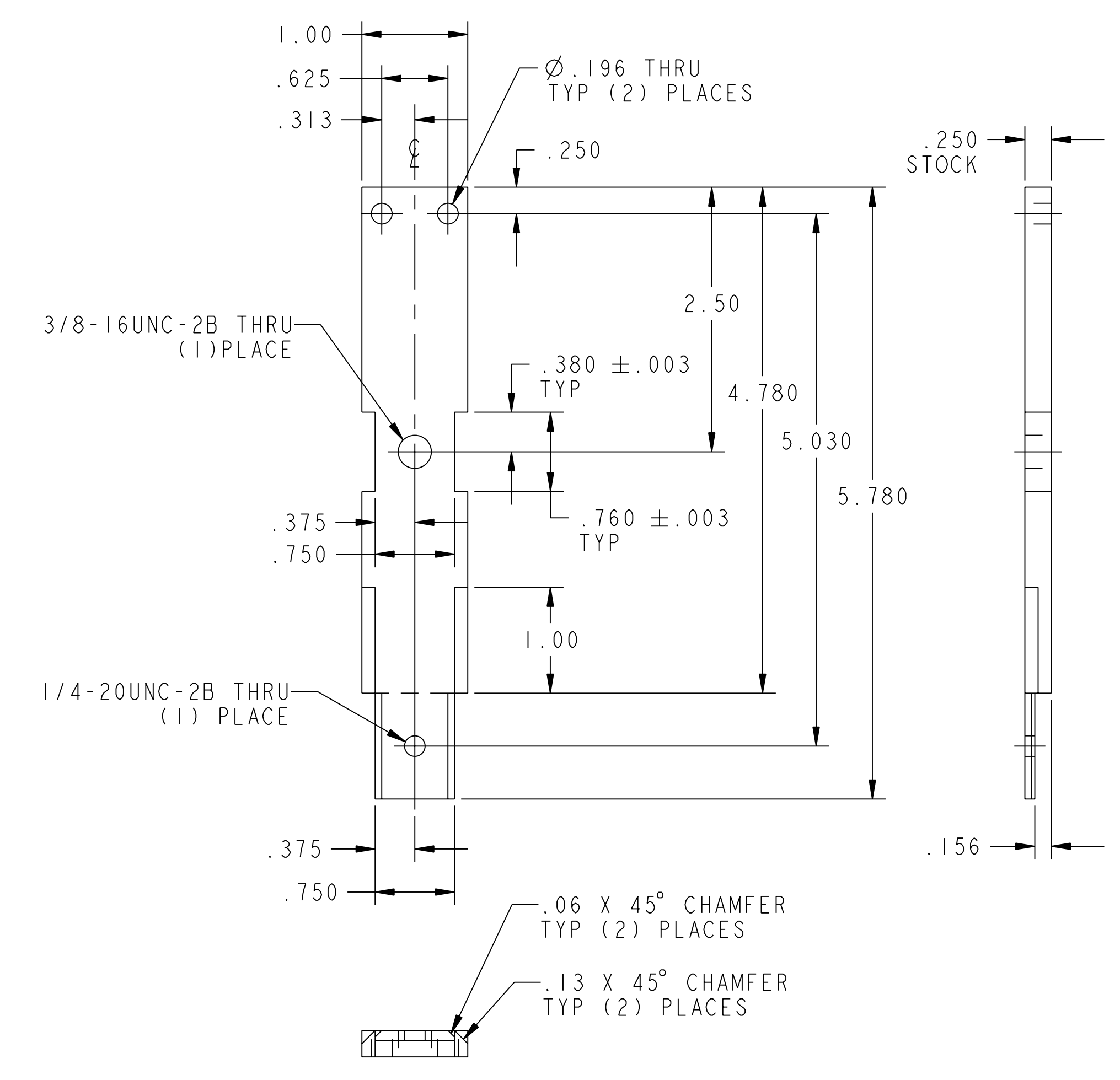
NO.	REVISION	BY	CH	SUP	APPROVED	DATE



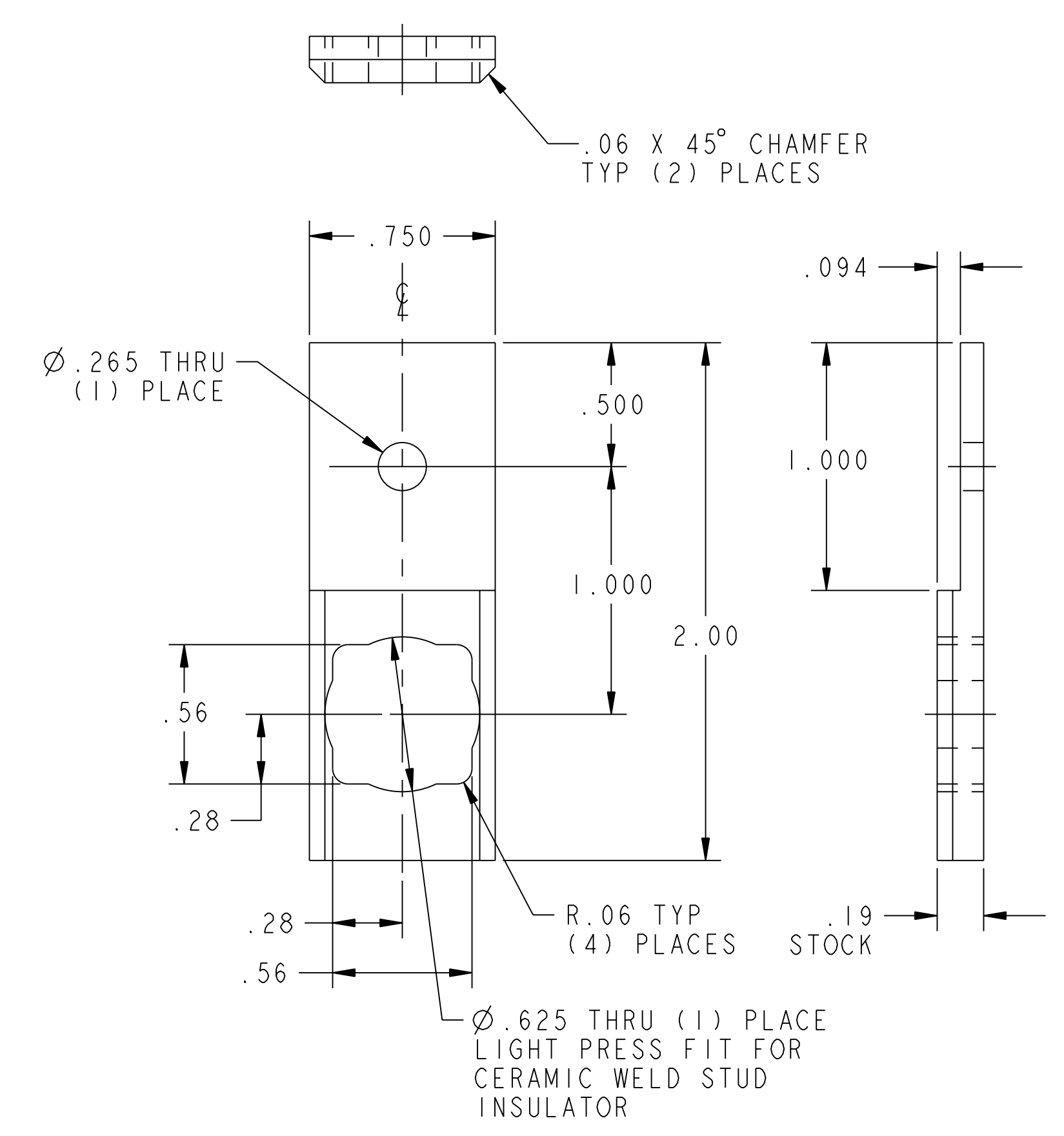
1 HORIZONTAL CLAMPING BAR
SCALE: 1/1



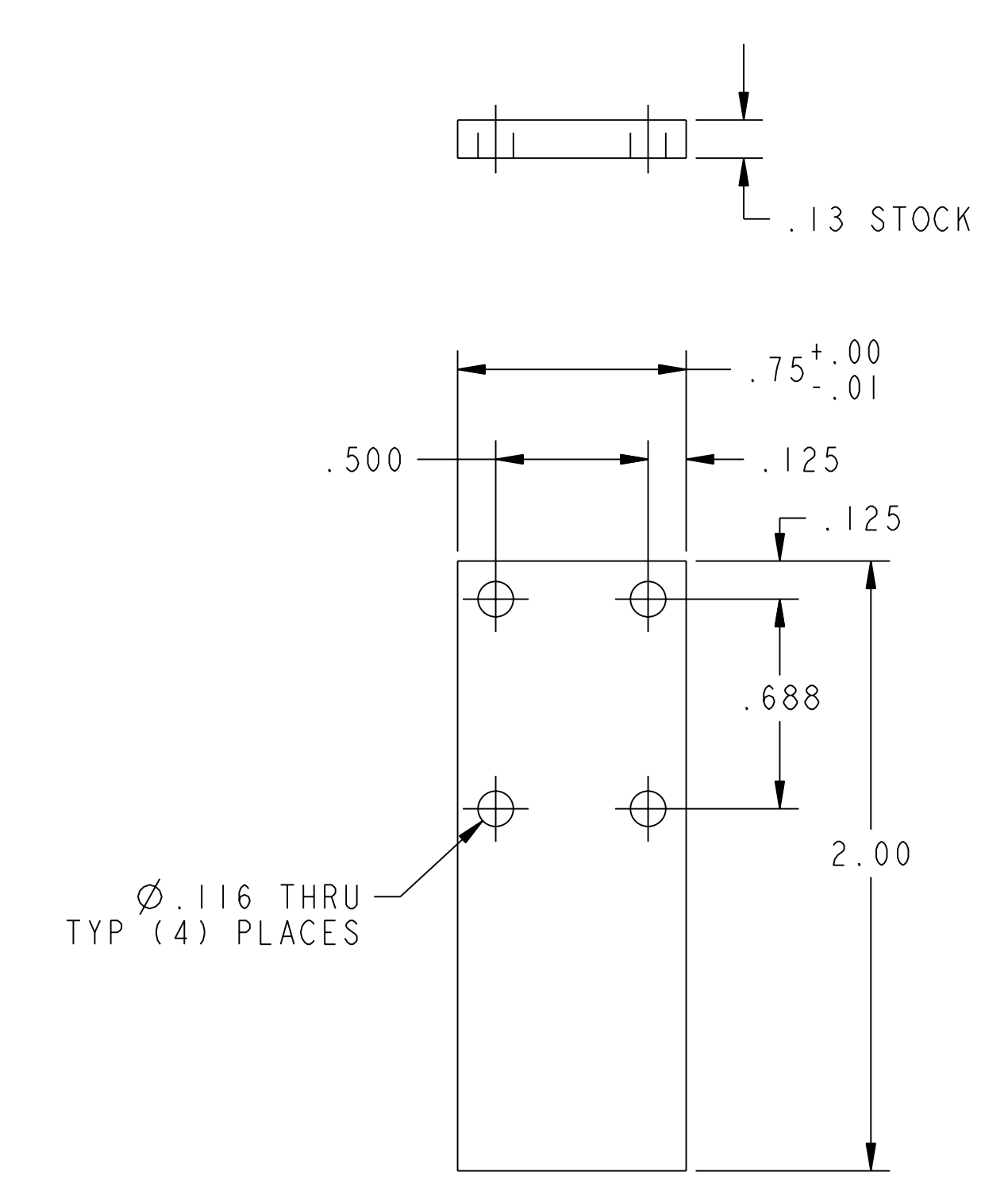
2 MOUNTING BUSHING
SCALE: 2X



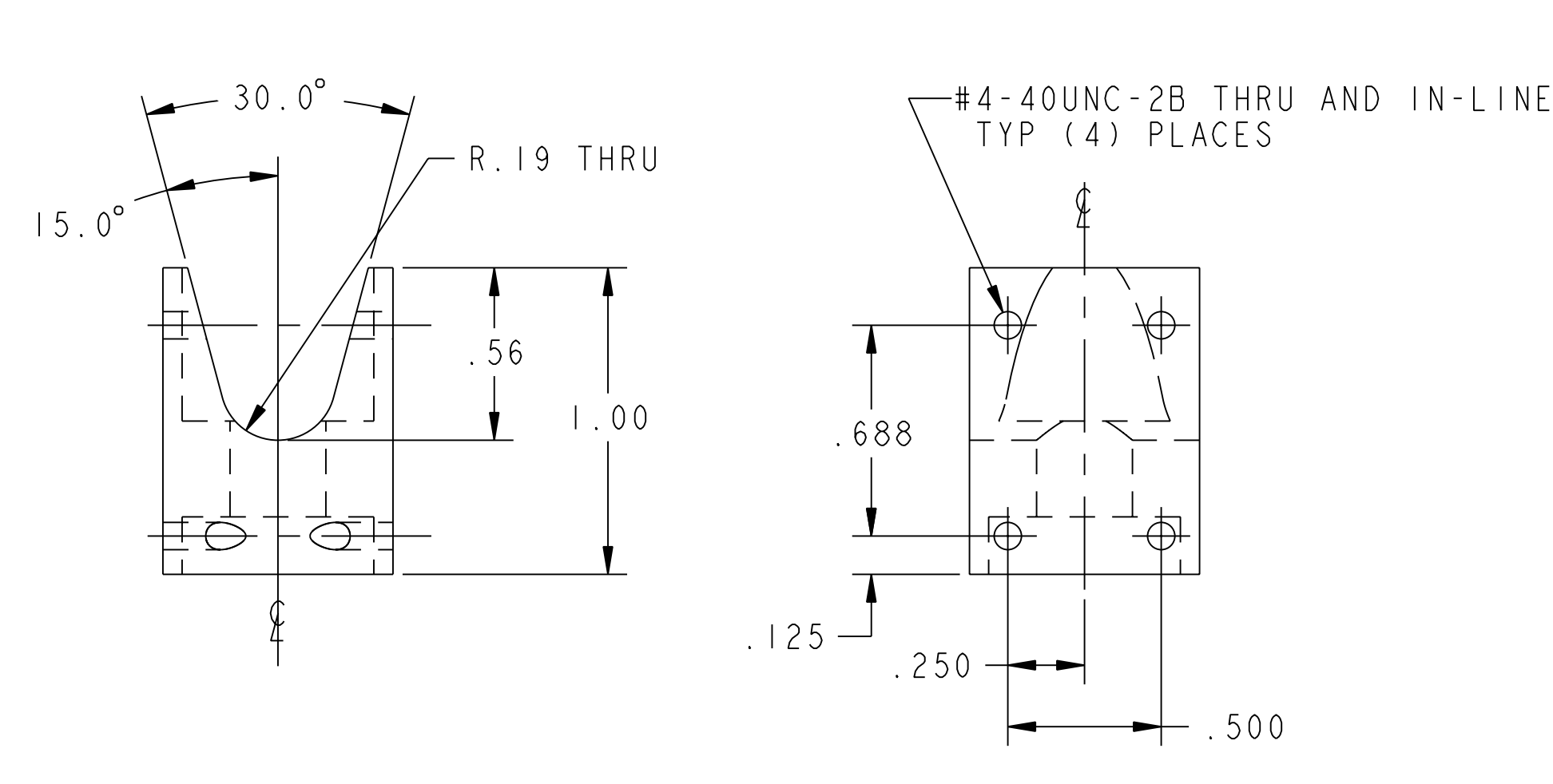
3 VERTICAL UPPER HALF SUPPORT BAR
SCALE: 1/1



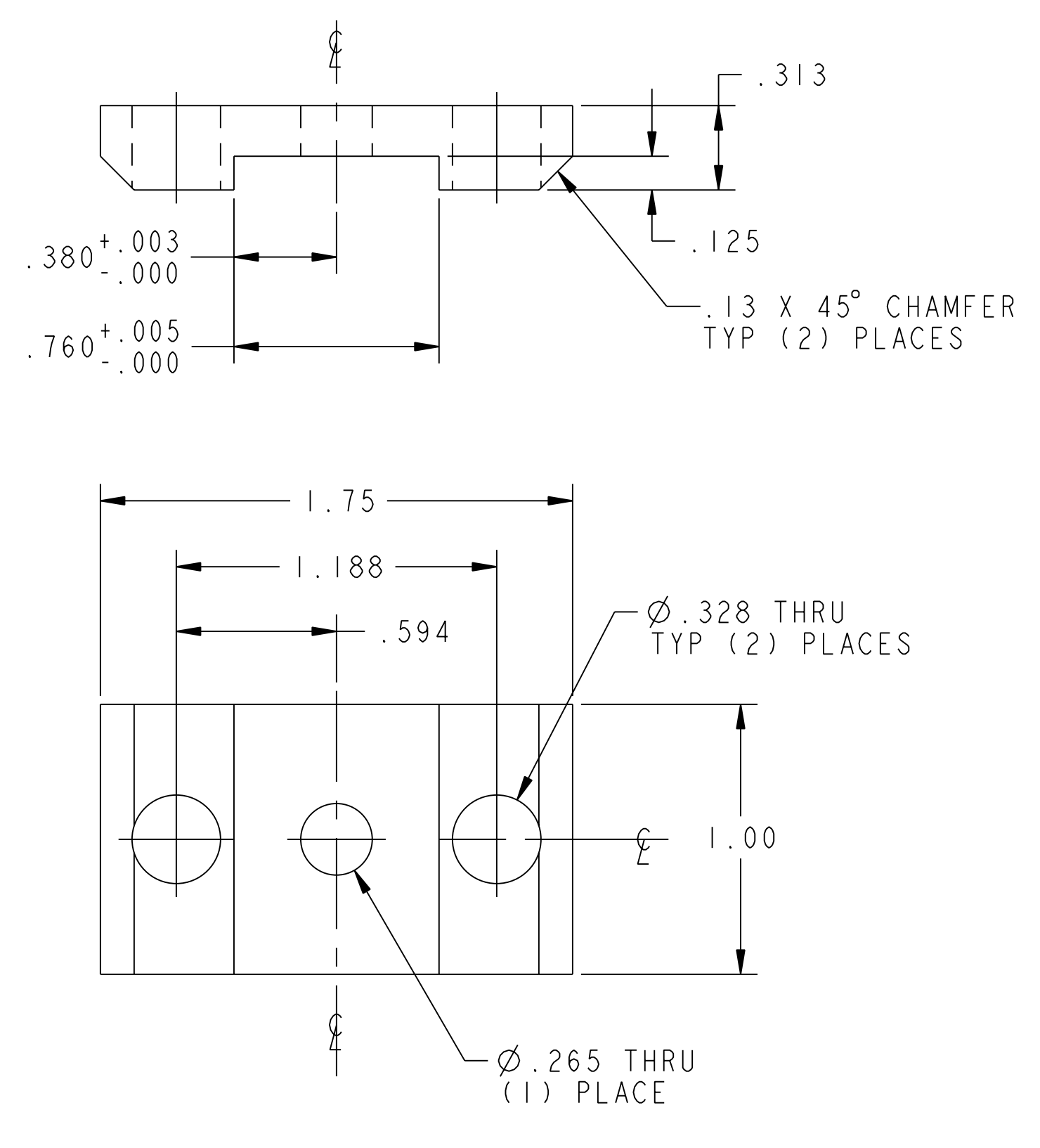
4 VERTICAL LOWER HALF SUPPORT BAR
SCALE: 2X



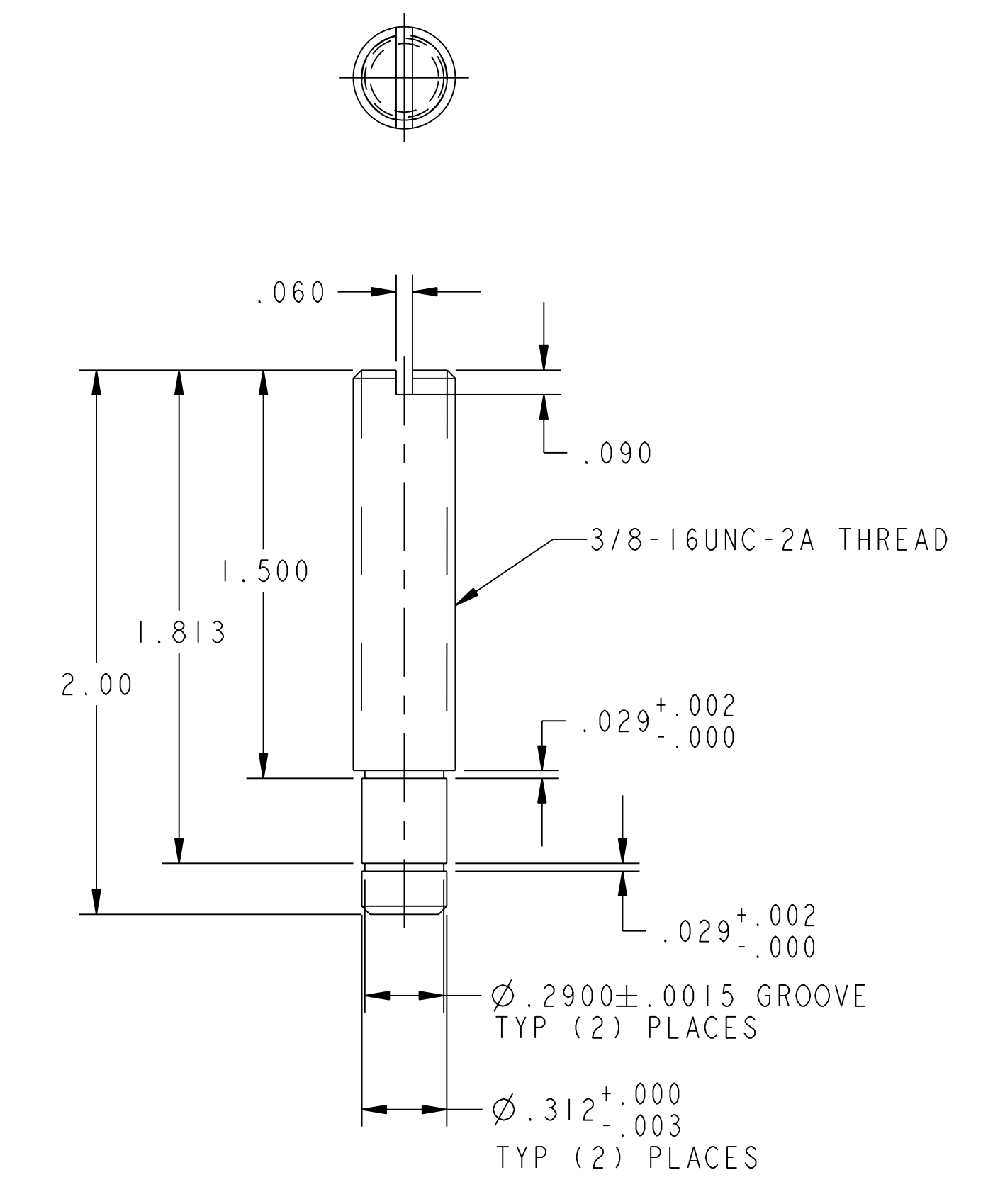
7 "VEE" BLOCK GUIDE PLATE
SCALE: 2X



5 "VEE" BLOCK
SCALE: 2X



6 GUIDE "TEE" PLATE
SCALE: 2X



8 "VEE" BLOCK PUSH SCREW
SCALE: 2X

RELEASED FOR FABRICATION / INSTALLATION
PPPL Drafting:

PART NO.	DRAWING NO	NOMENCLATURE OR DESCRIPTION	MATERIAL	QTY REQD
8	THIS DWG	"VEE" BLOCK PUSH SCREW	ASTM A108	2
7	THIS DWG	"VEE" BLOCK GUIDE PLATE	DELRIN	4
6	THIS DWG	GUIDE "TEE" PLATE	ASTM A36	4
5	THIS DWG	"VEE" BLOCK	ASTM A36	2
4	THIS DWG	VERTICAL LOWER HALF SUPPORT BAR	G-10	4
3	THIS DWG	VERTICAL UPPER HALF SUPPORT BAR	ASTM A36	4
2	THIS DWG	MOUNTING BUSHING	ASTM A108	2
1	THIS DWG	HORIZONTAL CLAMPING BAR	ASTM A36	2

COMPUTER GENERATED DRAWING MANUAL CHANGES NOT PERMITTED Pro E	CENTRAL FILES: UNLESS OTHERWISE SPECIFIED DIMENSIONS ARE IN INCHES MACHINE SURFACES BREAK SHARP EDGES .005/.020	PRINCETON PLASMA PHYSICS LABORATORY PRINCETON UNIVERSITY NATIONAL COMPACT STELLARATOR EXPERIMENT MODULAR COIL ASSEMBLY TWISTED RACETRACK WINDING FORM WELD STUD FIXTURE DETAILS
DO NOT VERIFY INFORMATION BY SCALING DRAWING	TOLERANCES NON-CUMULATIVE DECIMAL-INCH FRACTIONS .XX ±.000 .XXX ±.005 ANGULAR ±.0°-15° OVER 120° ±.1°	DSN: L. MORRIS 8-16-04 CHK: S. RAFTOPOULOS 8-16-04 ENGR: J. CHRZANOWSKI 8-16-04 SUPV: J. SIEGEL 8-16-04
WEIGHT 0.5 lbs	MODEL NAME SE144-086-8	DRAWING NO: SE144-086
RELEASE LEVEL: Fabrication DWG VERSION NO: 0	WELDING ENGINEER	SHEET 1 OF 1 REV 0

NCSX-SE144-086