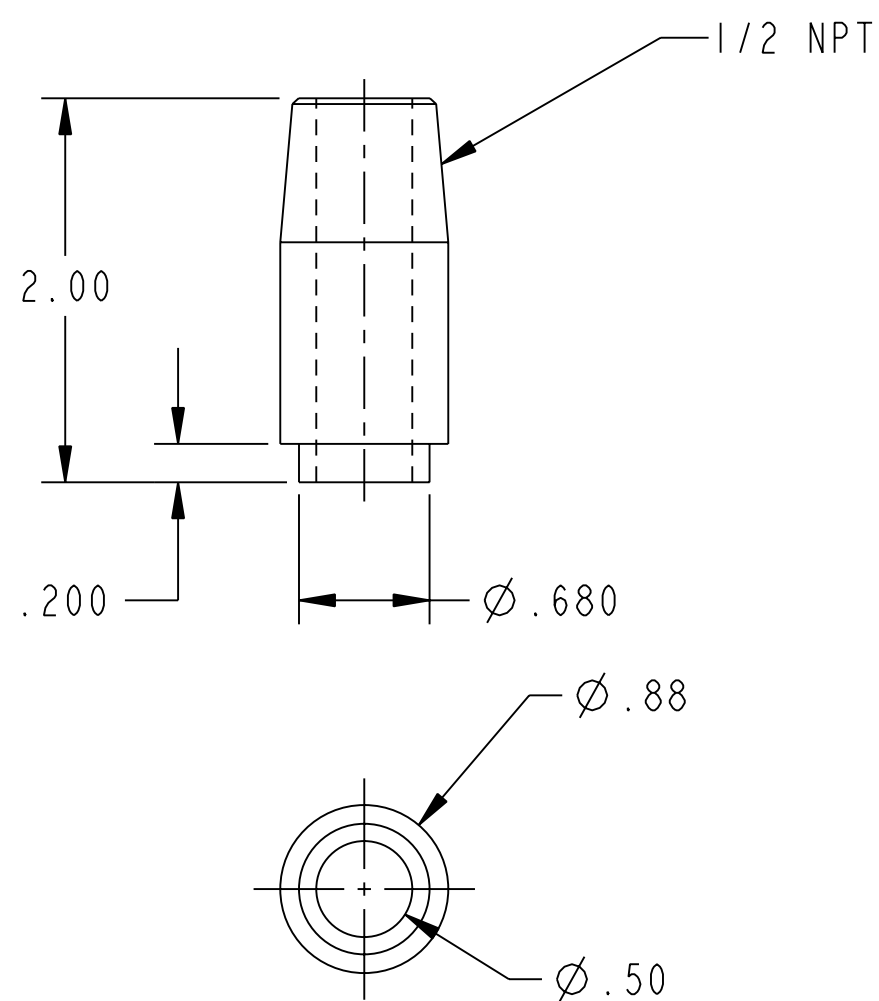
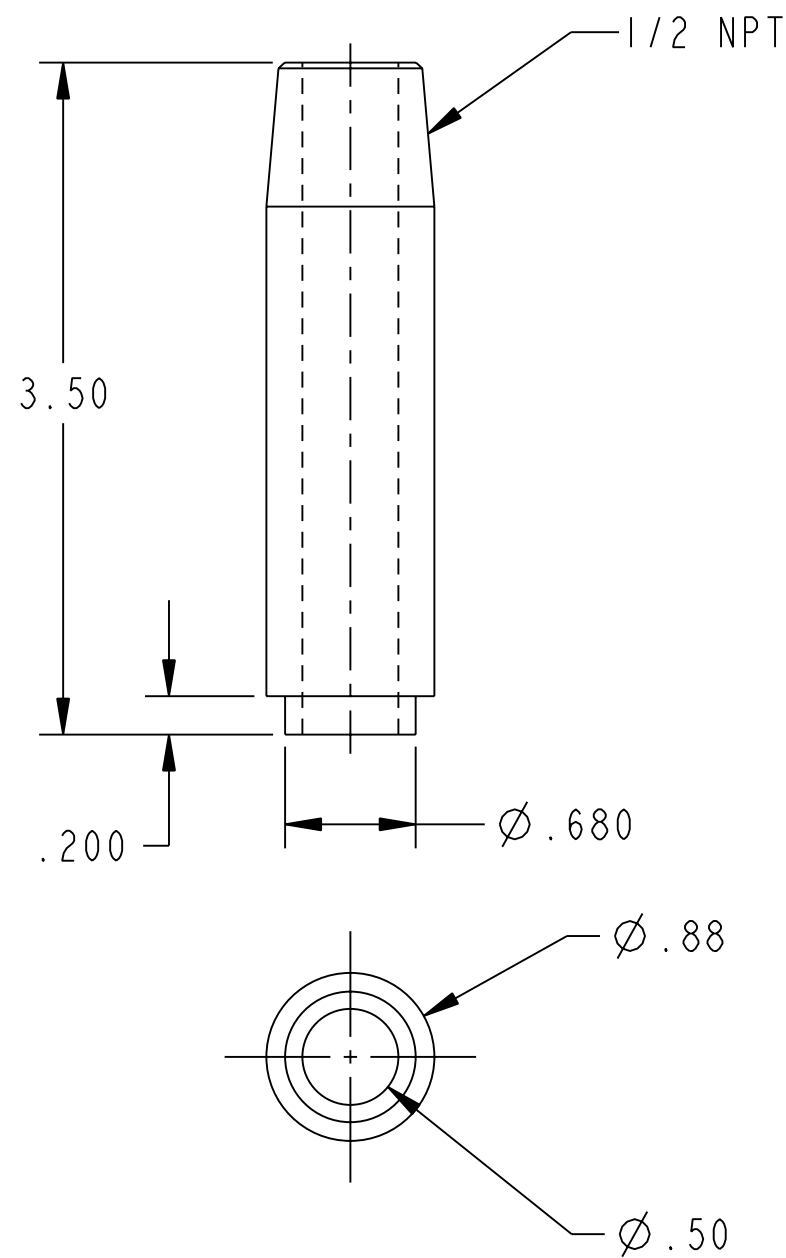


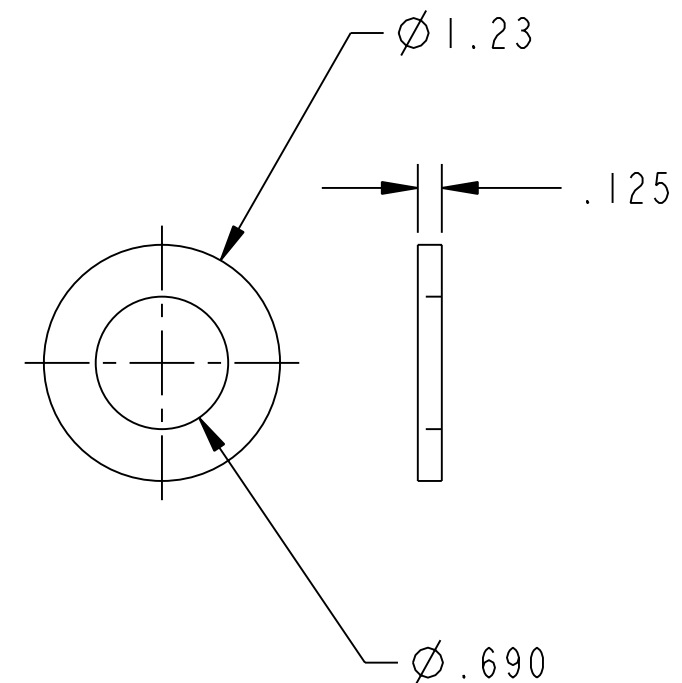
NO.	REVISION	BY	CH	SUP	APPROVED	DATE



SHORT SPRUE (1)



LONG SPRUE (2)



WASHER (3)

**RELEASED FOR
FABRICATION / INSTALLATION**
 PPPL Drafting:

3	THIS DWG	FLAT WASHER	G10 OR G11	900
2	THIS DWG	LONG SPRUE	G10 OR G11	800
1	THIS DWG	SHORT SPRUE	G10 OR G11	100
PART NO.	DRAWING NO.	NOMENCLATURE OR DESCRIPTION	MATERIAL	QTY REQ'D

PARTS LIST

COMPUTER GENERATED DRAWING MANUAL CHANGES NOT PERMITTED Pro E DO NOT VERIFY INFORMATION BY SCALING DRAWING	CENTRAL FILES:		PRINCETON PLASMA PHYSICS LABORATORY PRINCETON UNIVERSITY NATIONAL COMPACT STELLARATOR EXPERIMENT MODULAR COILS EPOXY IMPREGNATION SPRUES AND WASHER DETAILS		
	UNLESS OTHERWISE SPECIFIED				
	DIMENSIONS ARE IN INCHES MACHINE SURFACES ¹²⁵ ✓				
BREAK SHARP EDGES .005/.020		TOLERANCES NON-CUMULATIVE		DIV: MECH. ENG.	DATE: 07/13/05
NEXT ASSEMBLY		DECIMAL - INCH	FRACTIONS	ENG: J. CHRZANOWSKI	APPROVED
		.X .100	0"-12" 1/16	DSN: B. PAUL	J. CHRZANOWSKI
		.XX .030	12"-72" 1/8	CHK: L. MORRIS	SC144-210
		.XXX .005	72"-120" 1/4	CHK LM SUPV JS	
		ANGULAR 0°-15°	OVER 120" 1/2	SHEET 1 OF 1 REV 0	

DATE: 07/13/05

WELDING ENGINEER

APPVD: _____ DATE

RELEASE LEVEL: Fabrication

DWG VERSION NO: 1