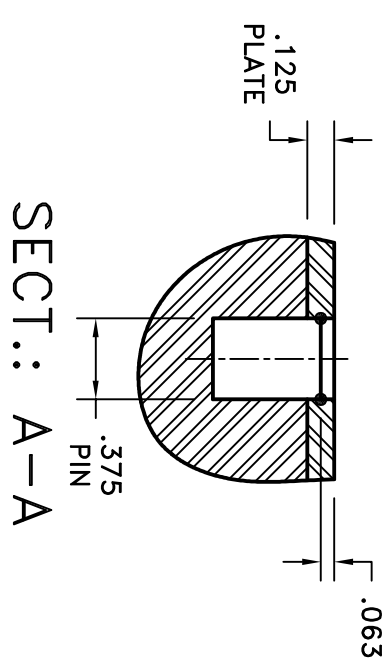
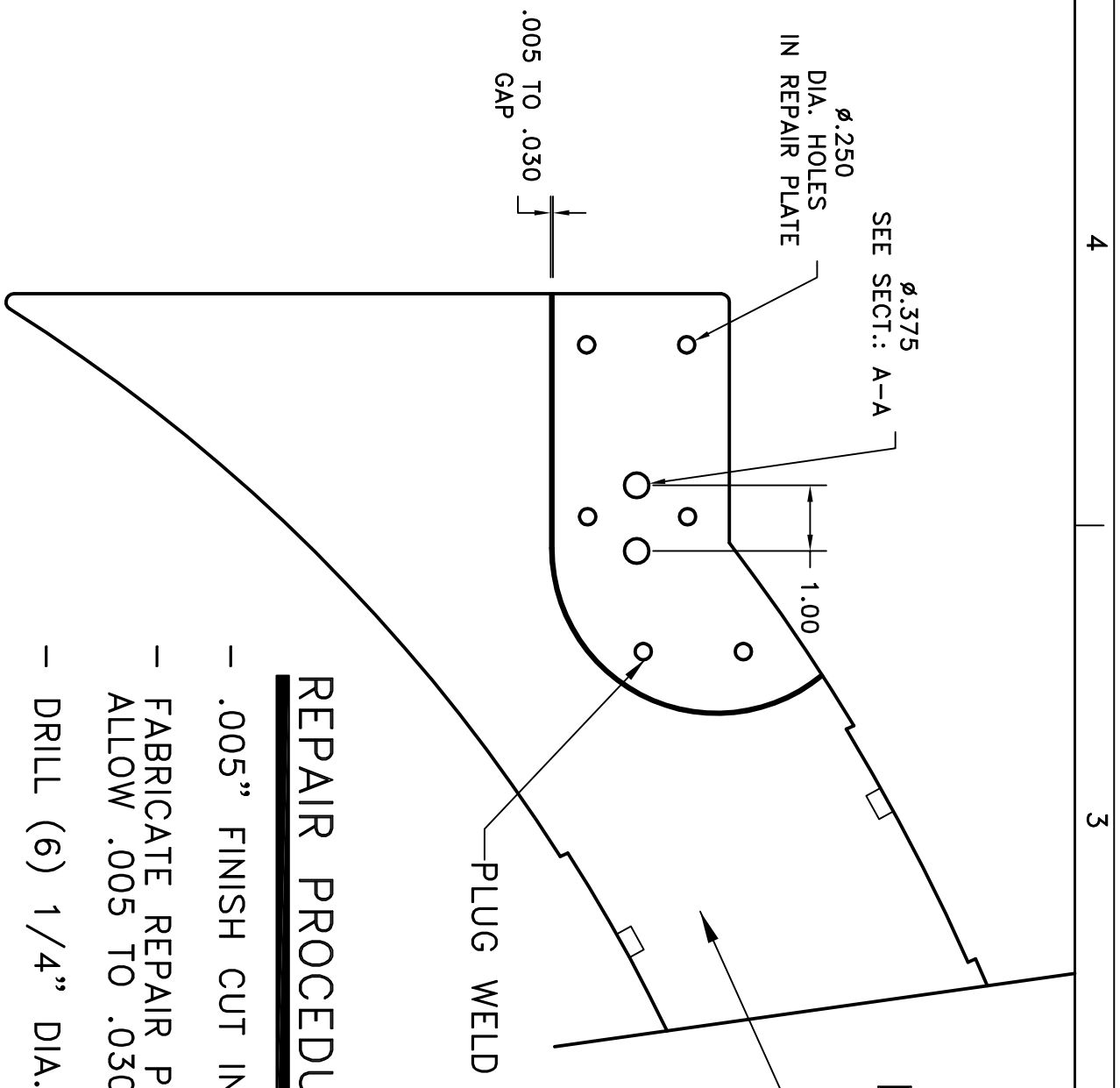


REVISIONS		
REV	DESCRIPTION	DATE APPROVED
1		

## BOTTOM WEDGE COIL #15



### REPAIR PROCEDURE

- .005" FINISH CUT IN REPAIR AREA.
- FABRICATE REPAIR PLATE FROM 1/8" THICK INCONNEL 625 ALLOW .005 TO .030" GAP AROUND PERIMETER.
- DRILL (6) 1/4" DIA. HOLES IN INCONNEL FOR PLUG WELDS.
- CLAMP INCONNEL REPAIR PLATE TO WEDGE . INSURE NO GAPS.
- FUSION WELD (NO FILLER) INCONNEL PLATE TO WEDGE.
- INSTALL (2) 3/8" DIA. X 1/2" LG. 316 SS PINS SEE SECT: A-A.
- FUSION WELD (NO FILLER) PINS TO REPAIR PLATE.
- MACHINE REPAIR PLATE FLUSH WITH WEDGE.

DO NOT DEVIATE FROM DRAWING IF IN DOUBT-ASK  
 THIS DRAWING CONTAINS INFORMATION PROPRIETARY TO EVERSON TESLA INCORPORATED  
 IT IS SUBMITTED IN CONFIDENCE AND IS TO BE USED SOLELY FOR THE PURPOSE FOR  
 WHICH IT IS FURNISHED AND RETURNED UPON REQUEST. THIS DRAWING AND SUCH  
 INFORMATION IS NOT TO BE REPRODUCED, TRANSMITTED, DISCLOSED, OR USED  
 OTHERWISE, IN WHOLE, IN PART, WITHOUT WRITTEN AUTHORIZATION FROM EVERSON  
 TESLA INCORPORATED.

DO NOT SCALE UNLESS OTHERWISE SPECIFIED	PROJECT ENG.	DATE	7/18/08
FINISH 125	DRAWN SECHLER	APPROVALS	
DIMENSIONS ARE IN INCHES.	APPROVED JOHN STARINK		
FRACTIONS: $\pm 1/64$			
DECIMALS: .XX $\pm$ .030			
ANGLES: $\pm 1/2^\circ$ .XXX $\pm$ .015			
BREAK SHARP EDGES .XXXX $\pm$ .0005			
MAX. N/A			
<b>everson tesla, inc.</b> 615 Daniels Road • Nazareth, PA.		TITLE	PPPL- COIL #15
			REPAIR BOTTOM WEDGE
		SCALE	C DWG NO. 53028-REPAIR
			REV A
		SHEET	1 of 1