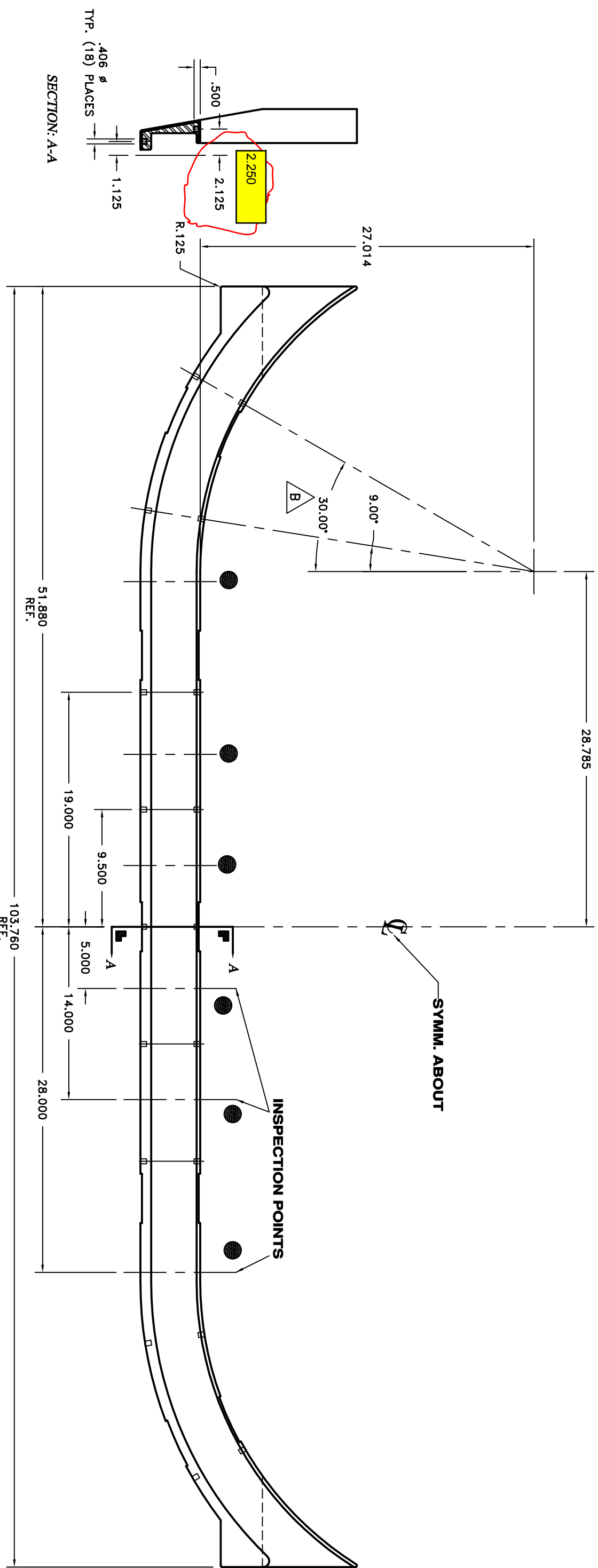


REV	DESCRIPTION	DATE	APPROVED
B	30X000 WAS 29"	11/13/06	STAFINIAK

REVISIONS 1



DO NOT DEVIATE FROM DRAWING IF IN DOUBT-ASK

THIS DRAWING CONTAINS INFORMATION PROPRIETARY TO EVESION TESLA INCORPORATED. IT IS SUBMITTED IN CONFIDENCE AND IS TO BE USED SOLELY FOR THE PURPOSE FOR WHICH IT WAS SUBMITTED. IT IS NOT TO BE REPRODUCED, TRANSMITTED, DISCLOSED, OR USED FOR ANY OTHER PURPOSE WITHOUT THE WRITTEN AUTHORIZATION FROM EVESION TESLA INCORPORATED.

DO NOT SCALE UNLESS OTHERWISE SPECIFIED

FINISH

125

DIMENSIONS ARE IN INCHES, DECIMALS TO 0.005

ANGLES: .XX \pm .015

BREAK SHARP EDGES

MAX. 1/4"

APPROVALS	DATE	TITLE
DRAWN	11/22/06	everson tesla, inc. 615 Donella Road • Hazareth, PA.
SCHEMATIC		
PROJECT ENG.	11/22/06	MODIFICATION TO PPPL
DESIGNED BY		WEDGE SE131-085
APPROVED		D PMS NO SE131-085
CUSTOMER APPROVAL		SCALE 1/4
		SHEET 1 of 1

A B C D E F 6 5 4 3 2 1