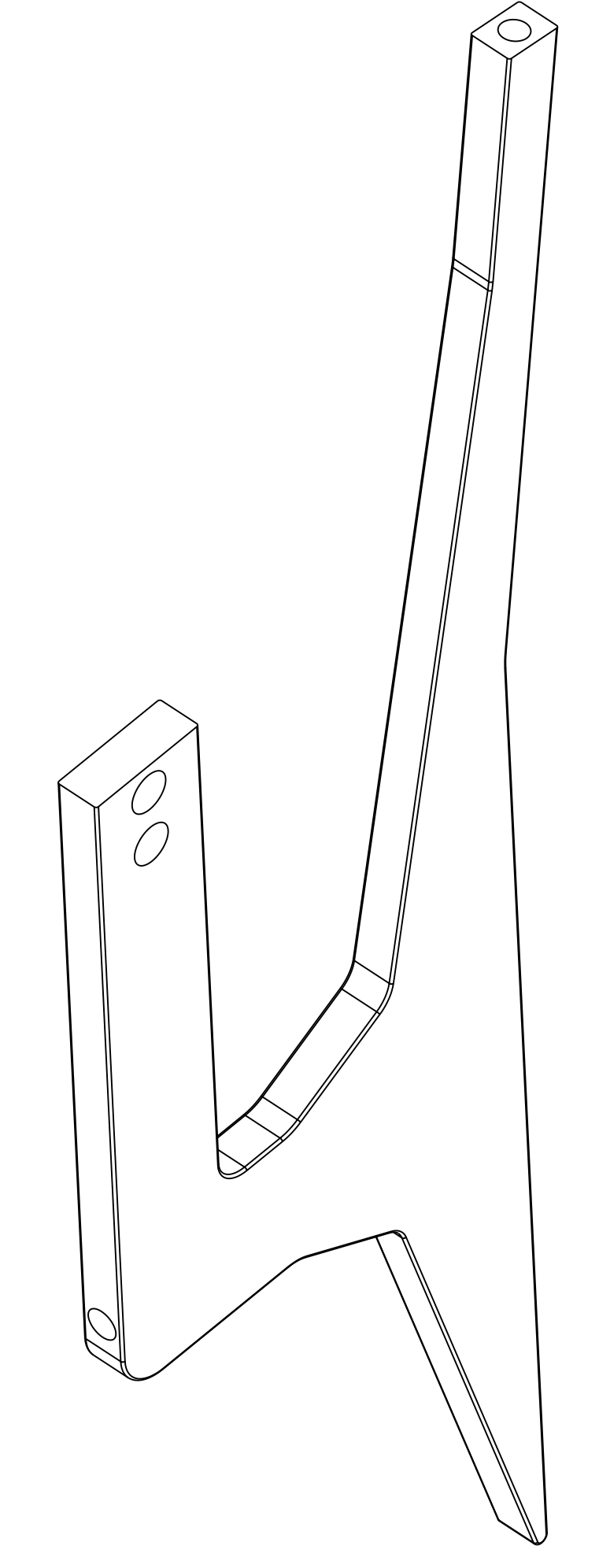
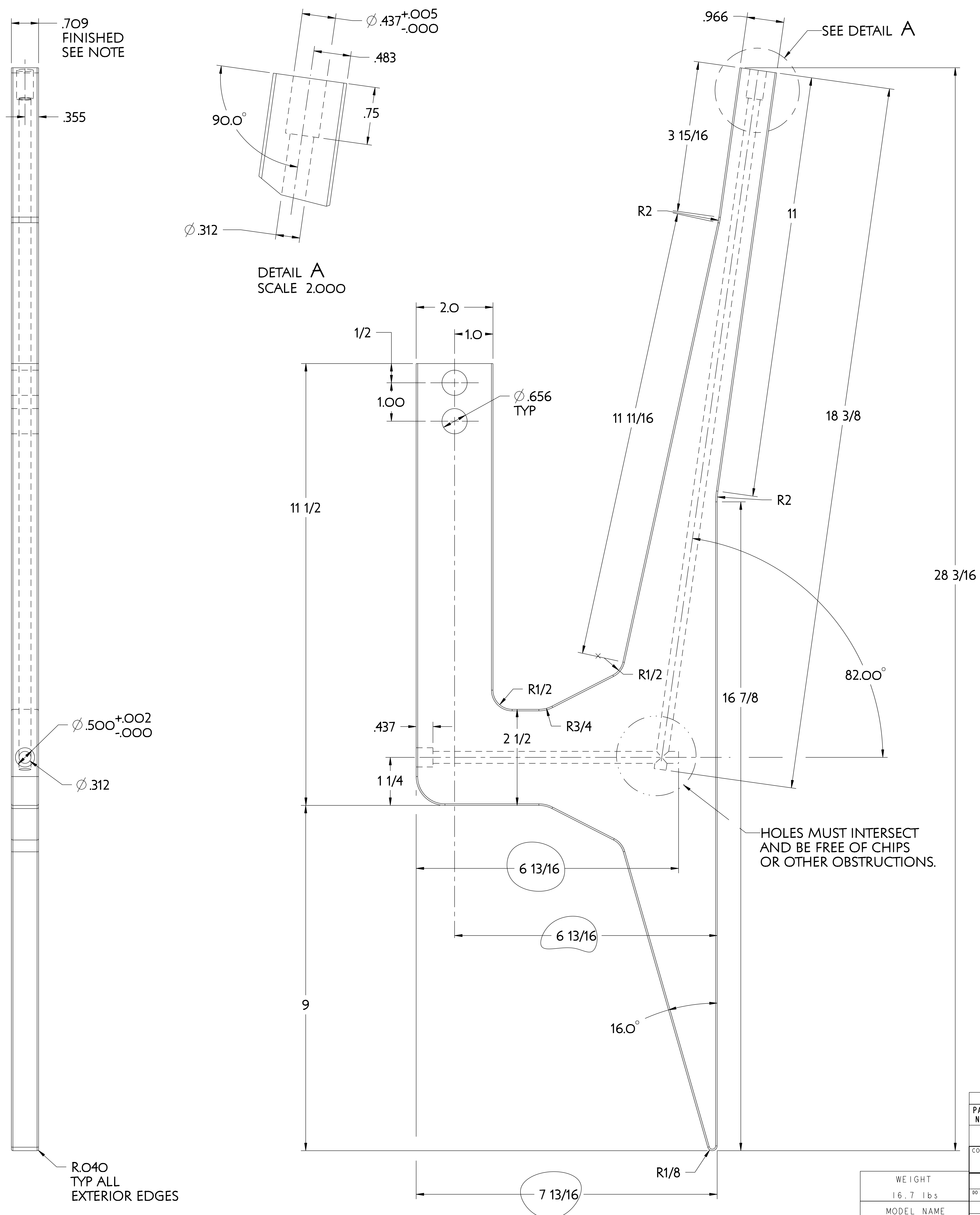


NO.	REVISION	BY	CH	SUP	APPROVED	DATE
1	REVISED PER ECN # 5103	JDR	MK	JS	M. KALISH	04/07/06
2	REVISED PER ECN # 5178	JDR	MK	JS	M. KALISH	11/15/06



**NOTE**

WATER JET CUT FROM 3/4" THICK COPPER PLATE USING "DXF" FILE SUPPLIED.

EXCEPT FOR COOLANT CHANNEL HOLES ALL DIMENSIONS SHOWN ARE ROUNDED OFF AND ARE SHOWN FOR INFORMATION ONLY. TRUE GEOMETRY DEFINED ON PRO-E MODEL SE131-081-R2.PRT

FINISH WIDTH TO DIMENSION SHOWN.

MATERIAL: UNC C107 COPPER PLATE 1/8 HARD ROCKWELL HARDNESS F60

PART NO.	DRAWING NO	NOMENCLATURE OR DESCRIPTION	MATERIAL	QTY RECD
1	SE131-081-R2	TF COIL LEAD LONG (NEW)		

SE131-081

WEIGHT	16.7 lbs
MODEL NAME	SE131-081-R2
WELDING ENGINEER	

RELEASE LEVEL:  
DWG VERSION NO:

NCSX-SE131-081