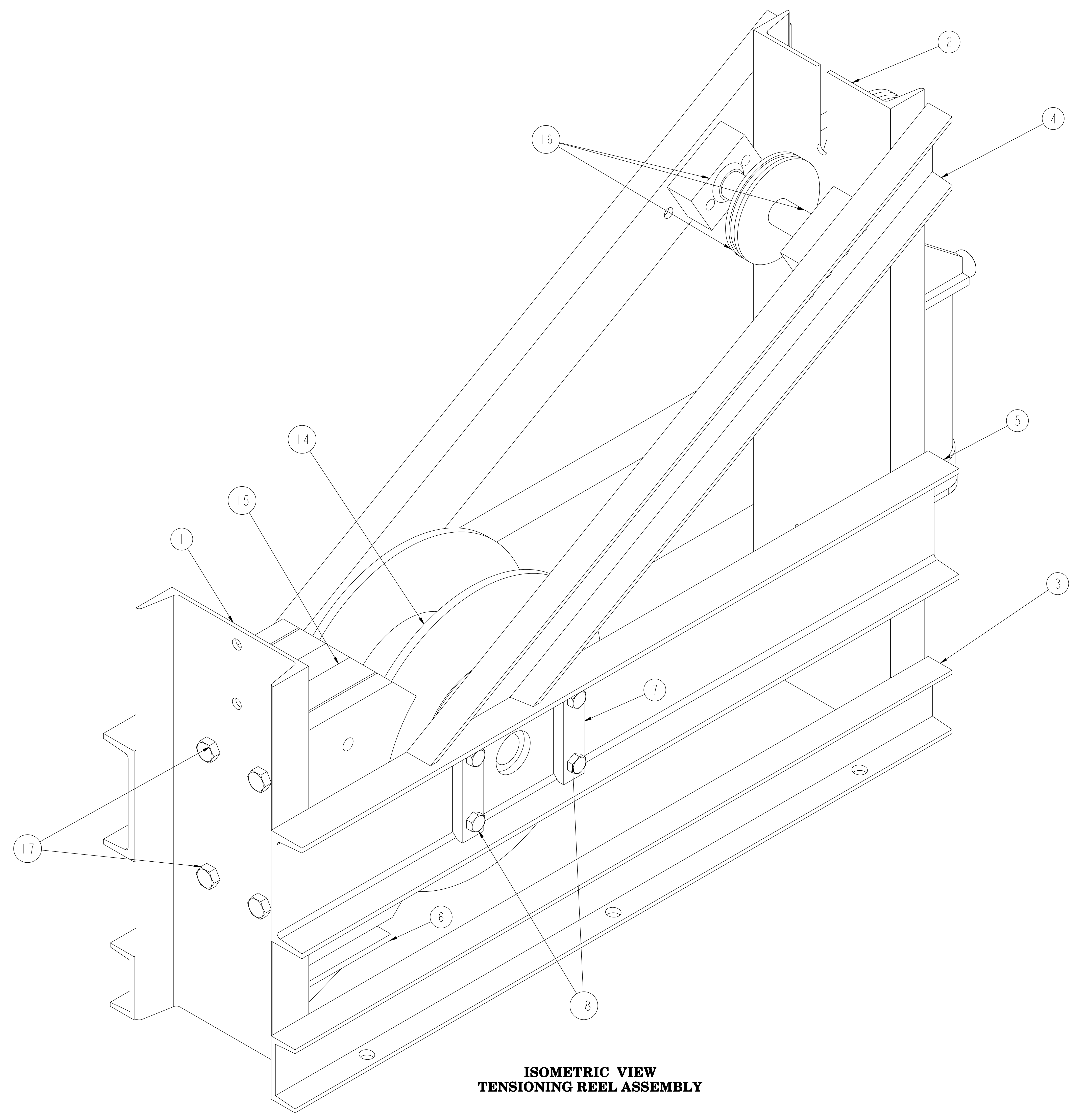
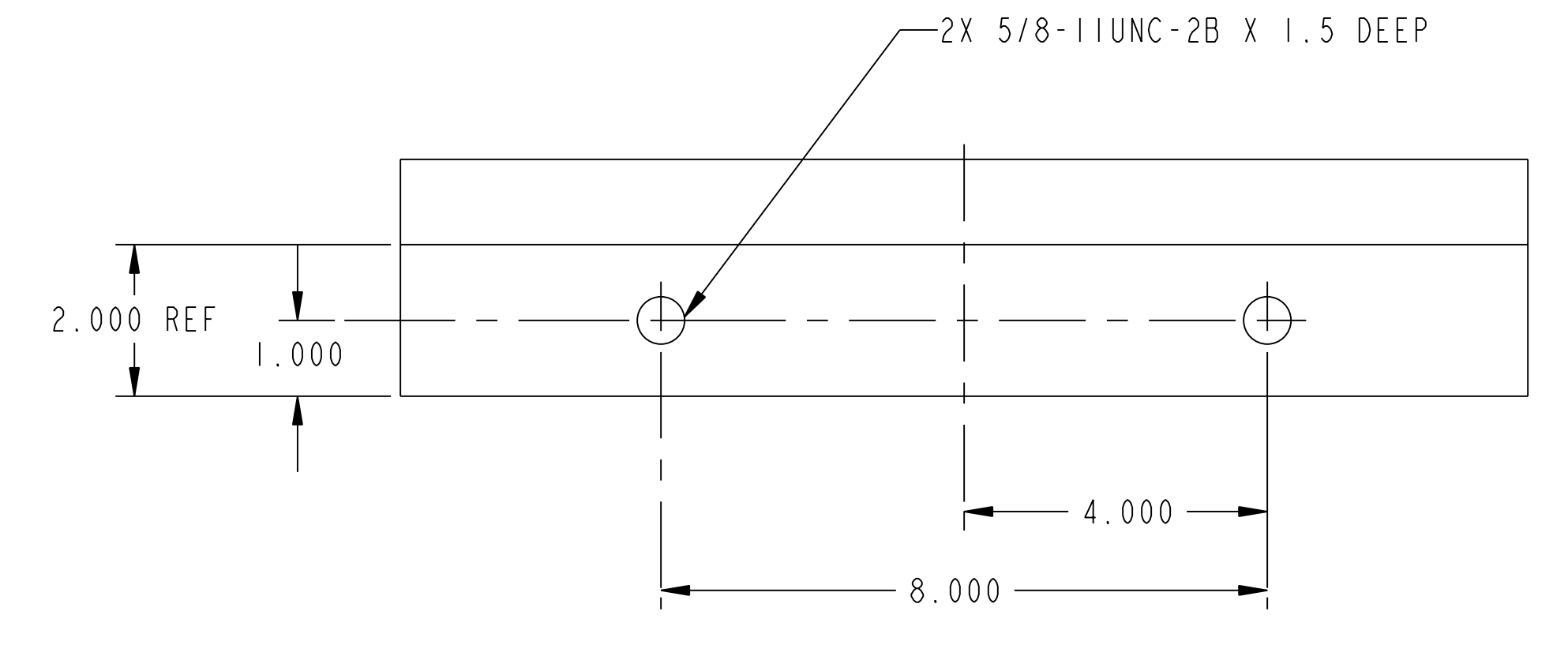
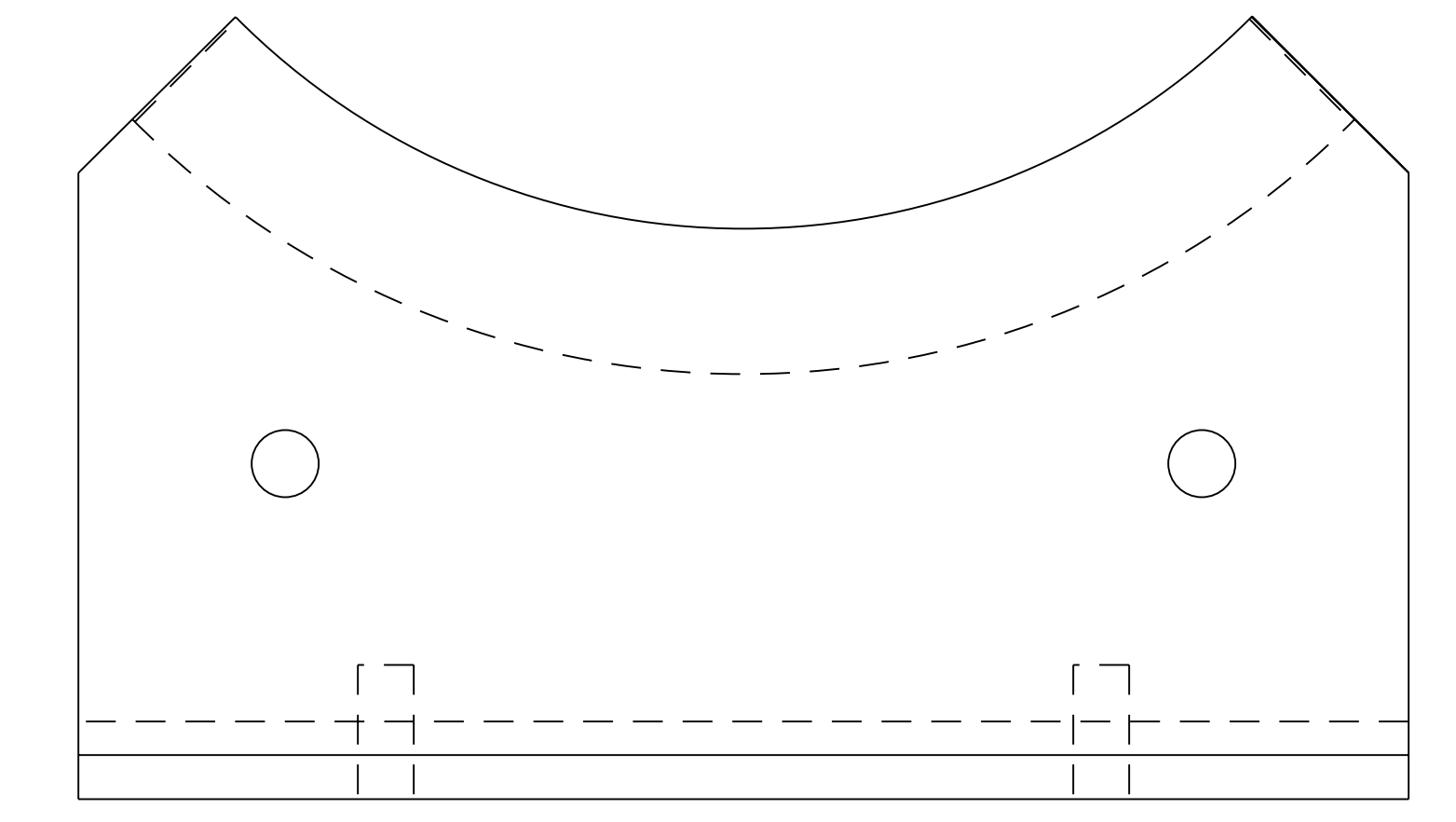


NO.	REVISION	BY	CH	SUP	APPROVED	DATE



**ISOMETRIC VIEW
TENSIONING REEL ASSEMBLY**



**PART 15
MODIFICATION TO EXISTING
BRAKES**

**RELEASED FOR
FABRICATION / INSTALLATION**

PPPL Drafting:

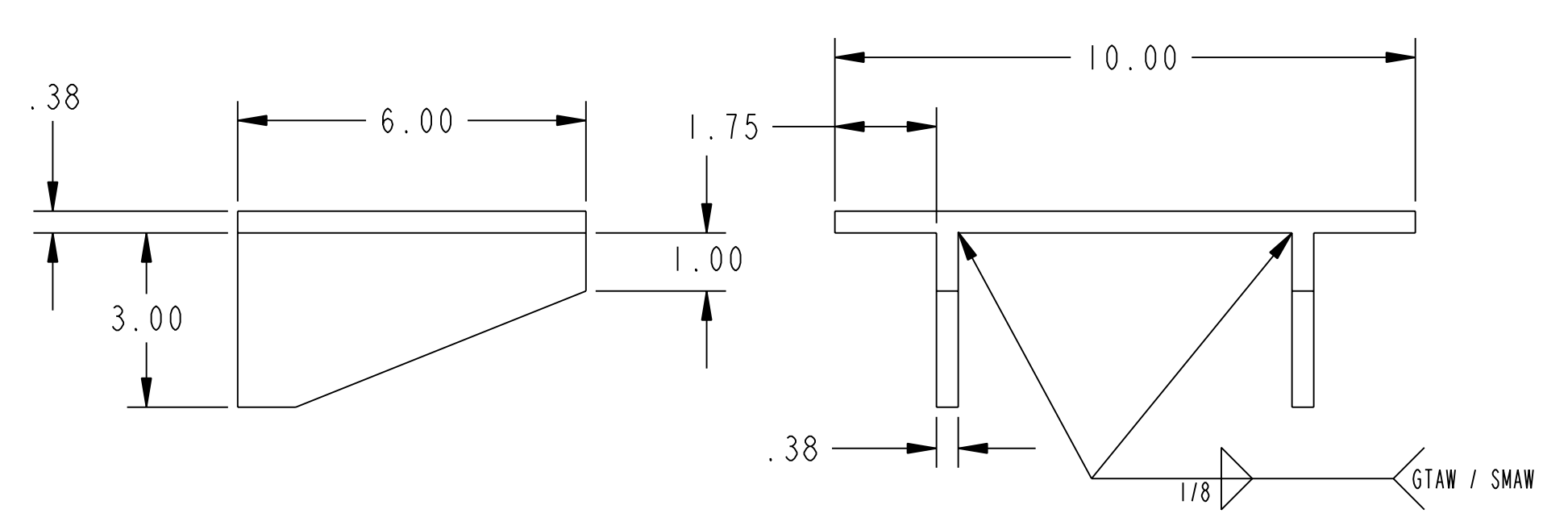
NOTES:
1. WELDING SHALL BE PERFORMED IN ACCORDANCE WITH THE REQUIREMENTS OF AWS D1.1 AND PPPL PROCEDURE NO. ENG-037. VISUAL WELD INSPECTION SHALL BE PERFORMED IN ACCORDANCE WITH THE ACCEPTANCE CRITERIA OF AWS D1.1, 6.9.

	2	19	COMM	3/8-16UNC HEX HD BOLT X 1" LG / NUT	CS
	8	18	COMM	5/8-11UNC HEX HD BOLT X LG TO SUIT	-----
	4	17	COMM	5/8-11UNC HEX HD BOLT X 1 1/2" LG	-----
	1	16	-----	EXT IDLER ROLLER, SHAFT, MOUNTING BLOCKS	CS
	2	15	THIS DWG	EXISTING TENSIONING REEL BRAKES (SEE MODIFICATION)	CS
	1	14	-----	EXISTING CABLE TENSIONING REEL	CS
	1	13	COMM	CYLINDER WITH SPRING-RETURN AND HOLLOW RAM 6 1/8" STROKE McMASTER CARR NO. 2990T66	-----
	1	12	COMM	SHEAVE FOR 3/8" Ø WIRE ROPE McMASTER CARR NO. 3175T48	-----
	1	11	THIS DWG	1" Ø PIN (SEE DETAIL) WITH COTTER PINS	-----
	1	10	THIS DWG	1/2" TH'K PLATES AS SHOWN (SEE DETAIL)	CS
	1	9	THIS DWG	1/4" TH'K PL BENT AS SHOWN (SEE DETAIL)	CS
	2	8	THIS DWG	1" TH'K PL CUT AS SHOWN (SEE DETAIL)	CS
	4	7	THIS DWG	3/4" TH'K BAR 1 1/2" X LG TO SUIT	CS
	1	6	THIS DWG	3/8" TH'K PL CUT AS SHOWN (SEE DETAIL)	CS
	2	5	THIS DWG	CHANNEL 7" X 14.75# X 48" LG	CS
	2	4	THIS DWG	CHANNEL 4" X 7.25# X 44" LG (SEE DETAIL)	CS
	2	3	THIS DWG	CHANNEL 4" X 7.25# X 48" LG	CS
	1	2	THIS DWG	CHANNEL 10" X 15.3# X 40" LG	CS
	1	1	THIS DWG	CHANNEL 10" X 15.3# X 26" LG	CS
	--	--	THIS DWG	TENSIONING REEL ASSEMBLY	-----

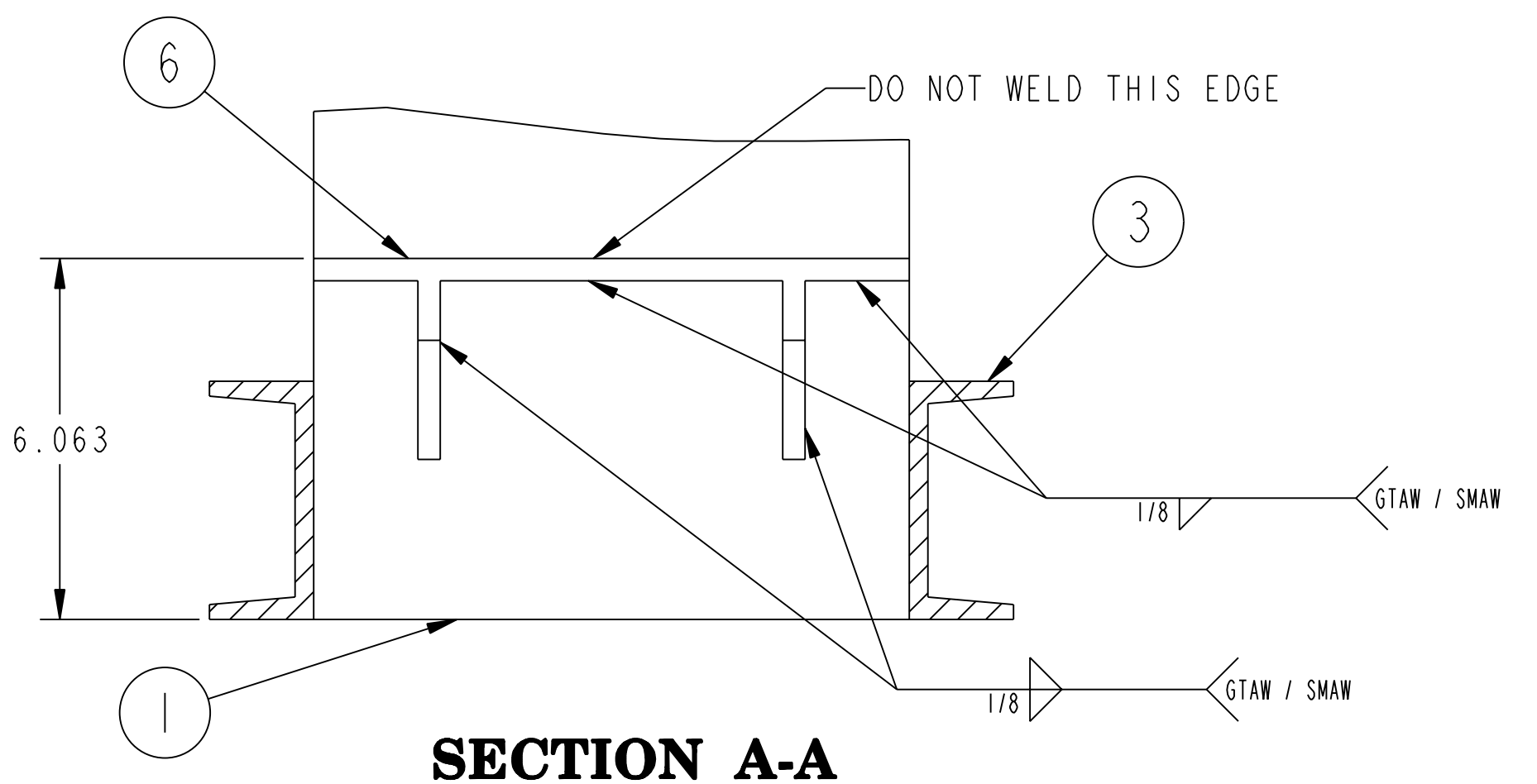
03	02	01	PART NO.	DRAWING NO	NOMENCLATURE OR DESCRIPTION	MATERIAL
ASSY QTY			PARTS LIST			
COMPUTER GENERATED DRAWING MANUAL CHANGES NOT PERMITTED			CENTRAL FILES: UNLESS OTHERWISE SPECIFIED			
Pr o E			PRINCETON PLASMA PHYSICS LABORATORY PRINCETON UNIVERSITY, N.J.			
DO NOT VERIFY INFORMATION BY SCALING DRAWING			DIMENSIONS ARE IN INCHES MACHINE SURFACES UNLESS OTHERWISE SPECIFIED			
NEXT ASSEMBLY			BREAK SHARP EDGES .005/.020			
WEIGHT			TOLERANCES NON-CUMULATIVE			
1082.7 lbs			DECIMAL-INCH FRACTIONS			
MODEL NAME			DSN: B. PAUL 8/25/05 DRAWING NO:			
SE1312-014			CHK: L. DUDEK 8/25/05			
RELEASE LEVEL: Fabrication			ENGR: J. CHRZANOWSKI 8/25/05			
DWG VERSION NO: 4			ANGLAR: J. SIEGEL 8/25/05 SUPV: J. SIEGEL 8/25/05			
WELDING ENGINEER			SE1312-014			
L. DUDEK			SHEET 1 OF 3			
			REV 0			

NCSX-SE1312-014

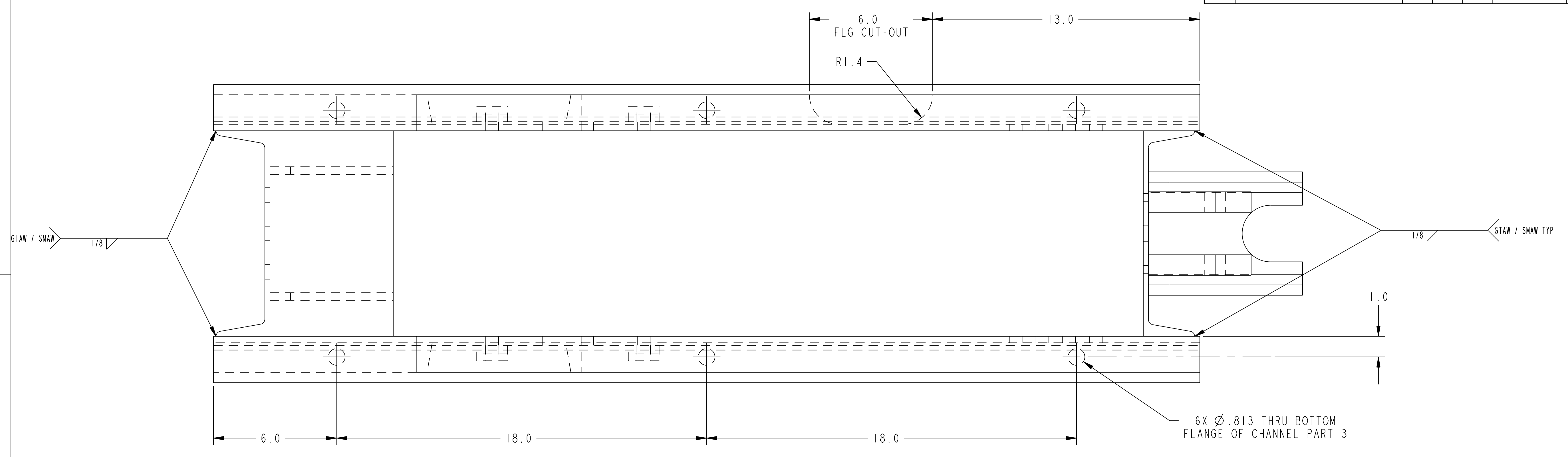
NO.	REVISION	BY	CH	SUP	APPROVED	DATE



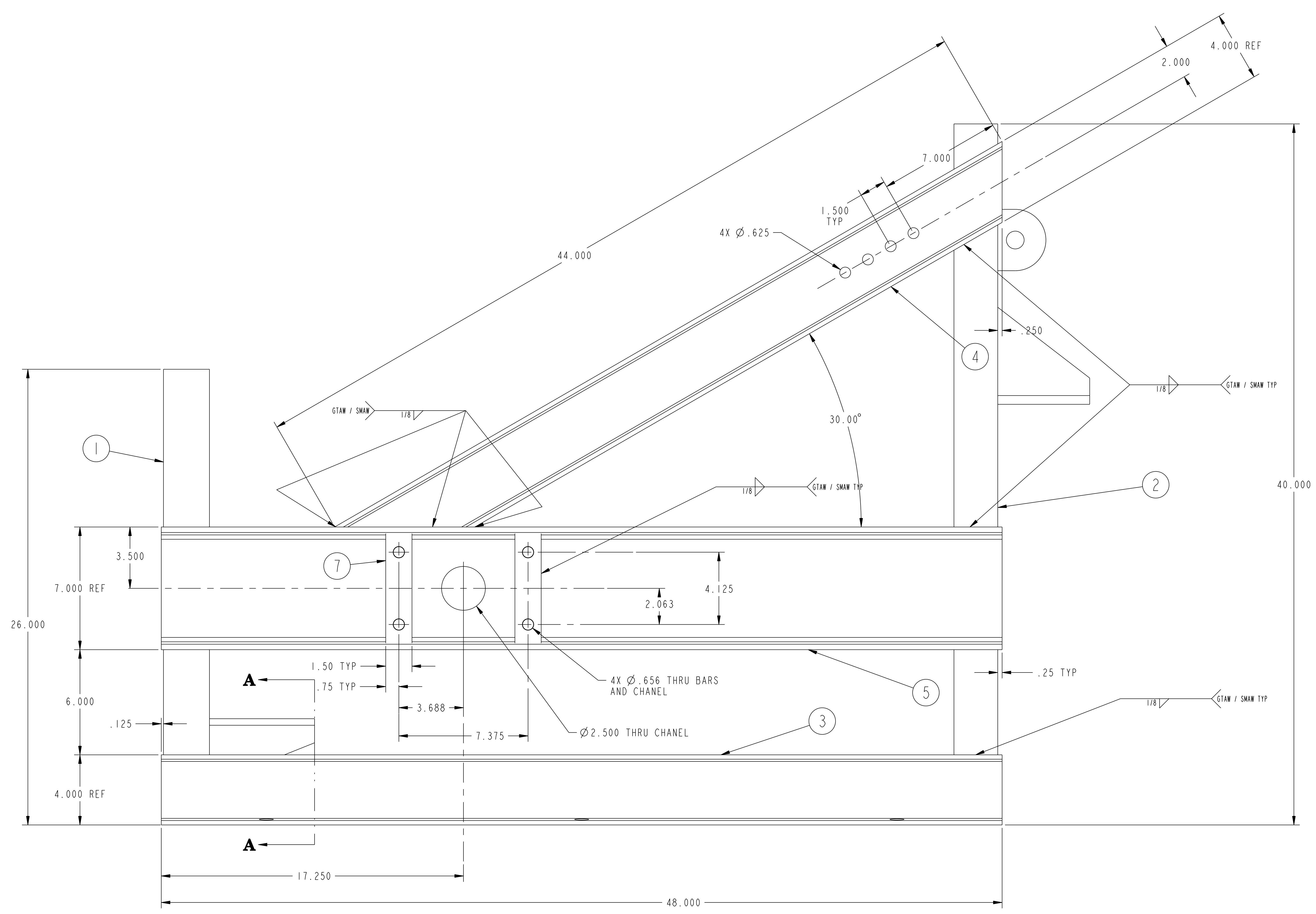
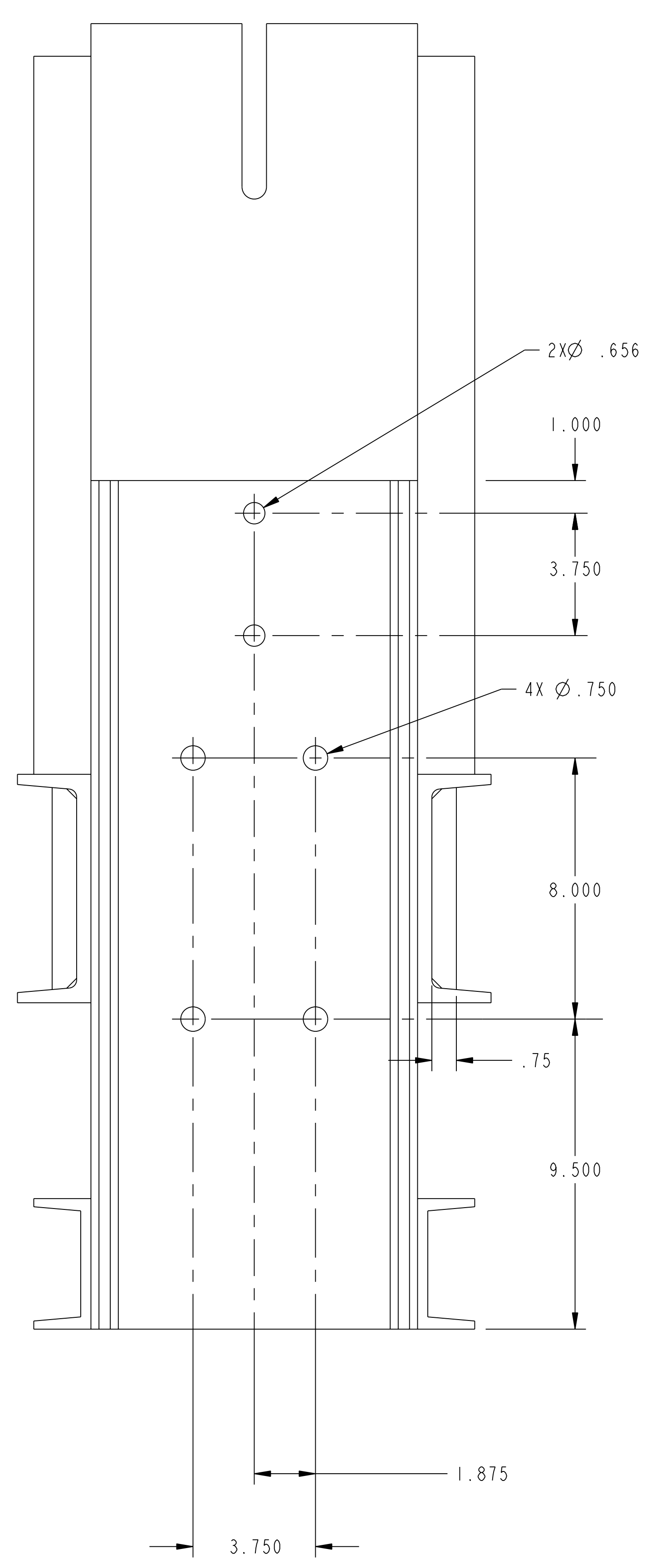
SHELF DETAIL PART 6



SECTION A-A



6X Ø .813 THRU BOTTOM FLANGE OF CHANNEL PART 3



TENSIONING FRAME ASSEMBLY WELDMENT

RELEASED FOR FABRICATION / INSTALLATION
PPPL Drafting:

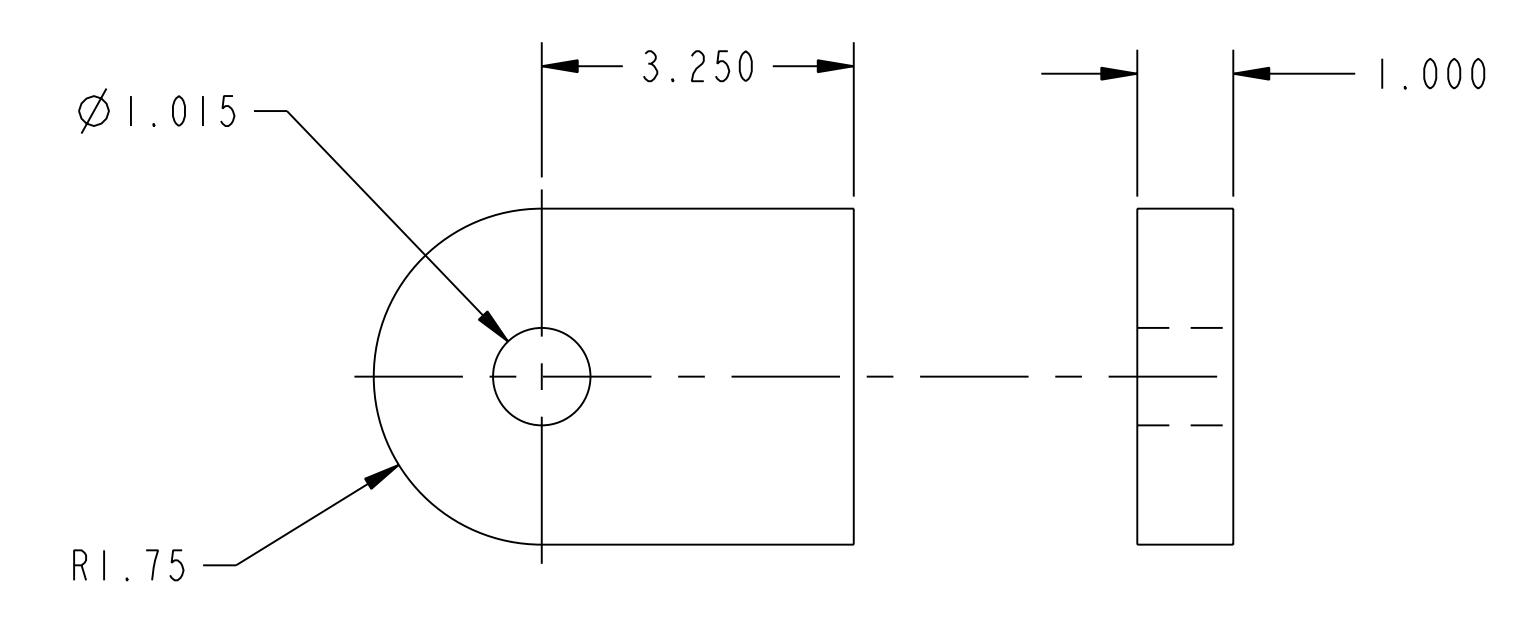
RELEASE LEVEL: Fabrication
DWG VERSION NO: 5

WEIGHT	1082.7 lbs
MODEL NAME	SE1312-014
WELDING ENGINEER	L. DUDEK

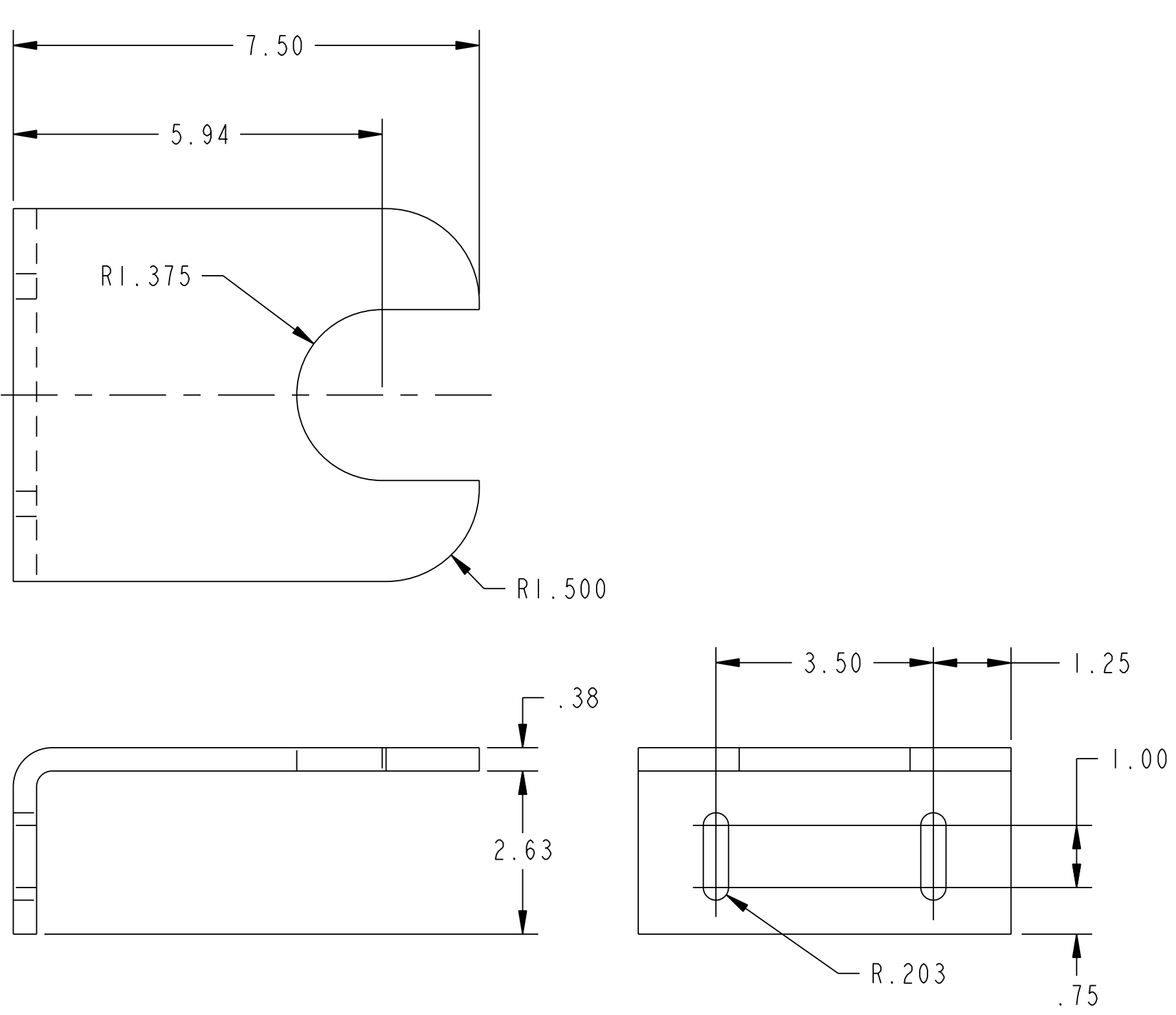
COMPUTER GENERATED DRAWING MANUAL CHANGES NOT PERMITTED Pro E	CENTRAL FILES: UNLESS OTHERWISE SPECIFIED	PRINCETON PLASMA PHYSICS LABORATORY PRINCETON UNIVERSITY NATIONAL COMPACT STELLARATOR EXPERIMENT
DO NOT VERIFY INFORMATION BY SCALING DRAWING	DIMENSIONS ARE IN INCHES MACHINE SURFACES BREAK SHARP EDGES .005/.020	IF COIL WINDING ROOM TENSIONING REEL ASSEMBLY WELDMENT AND DETAILS
NEXT ASSEMBLY	TOLERANCES NON-CUMULATIVE DECIMAL-INCH FRACTIONS .XX ±.000 .XXX ±.005 ANGULAR ±.0°-15° OVER 120° ±.1°	DSN: B. PAUL 8/25/05 CHK: L. DUDEK 8/25/05 ENGR: J. CHRZANOWSKI 8/25/05 SUPV: J. SIEGEL 8/25/05
		DRAWING NO: SE1312-014 SHEET 2 OF 3 REV 0

NCSX-SET 1312-014

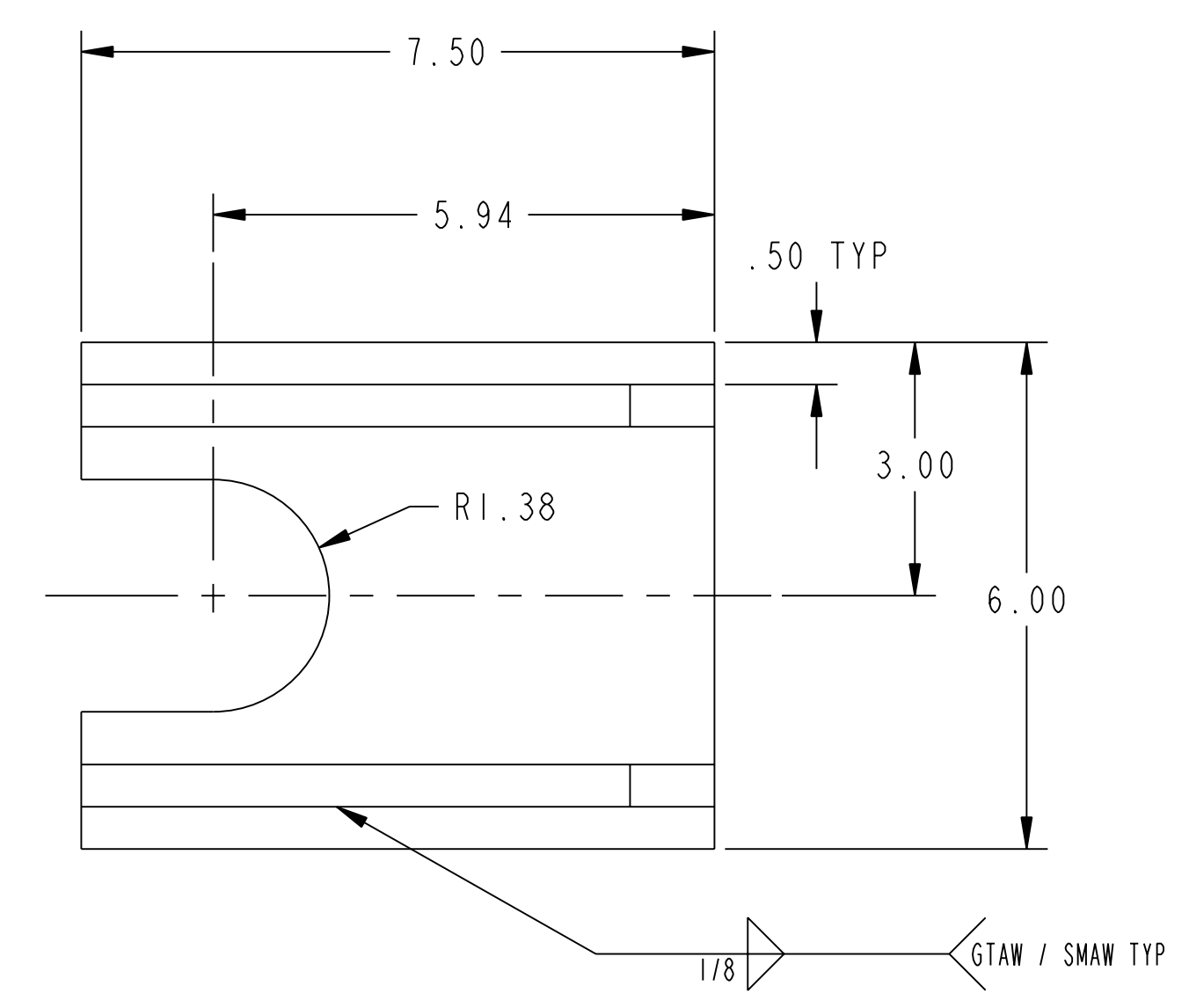
NO.	REVISION	BY	CH	SUP	APPROVED	DATE



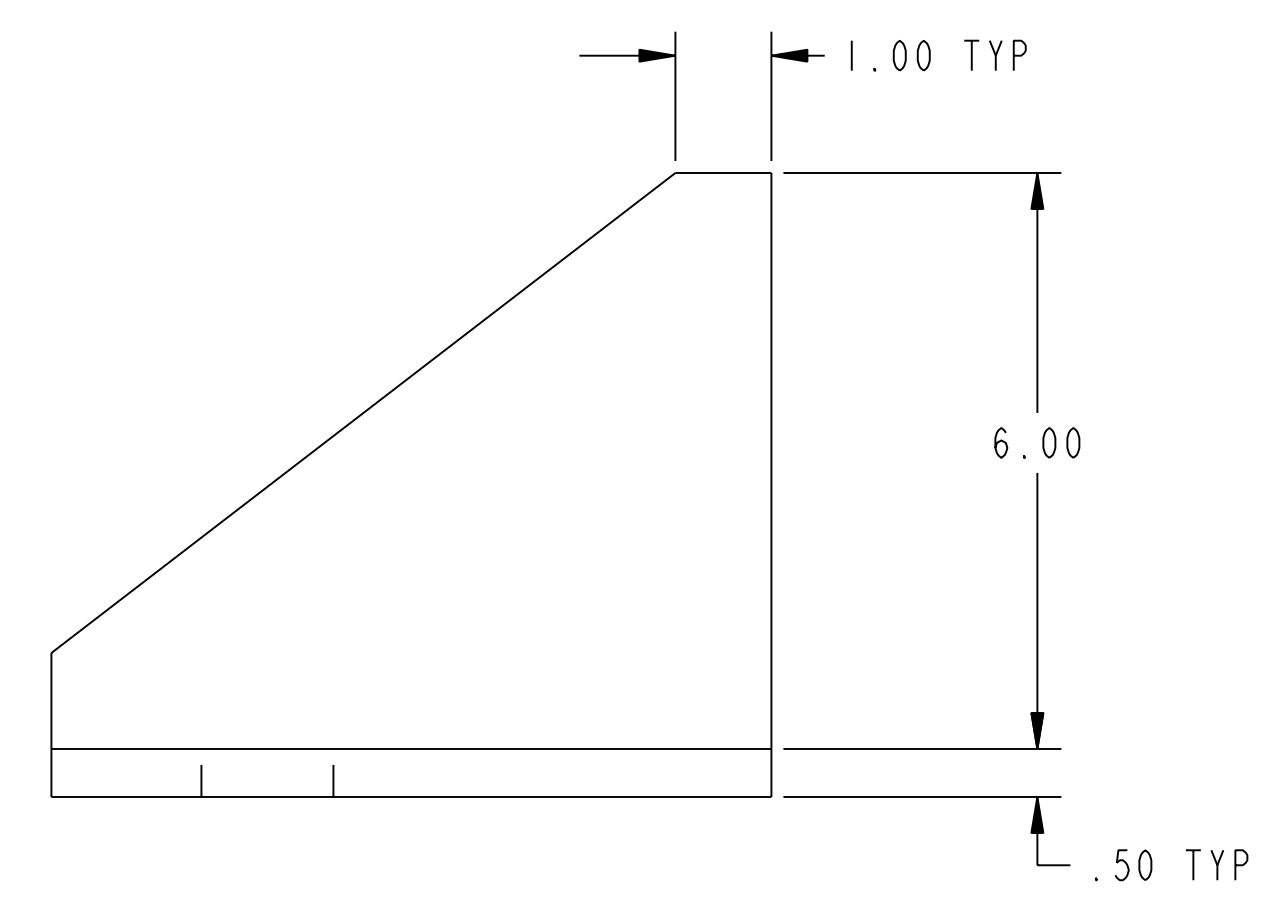
PART 8



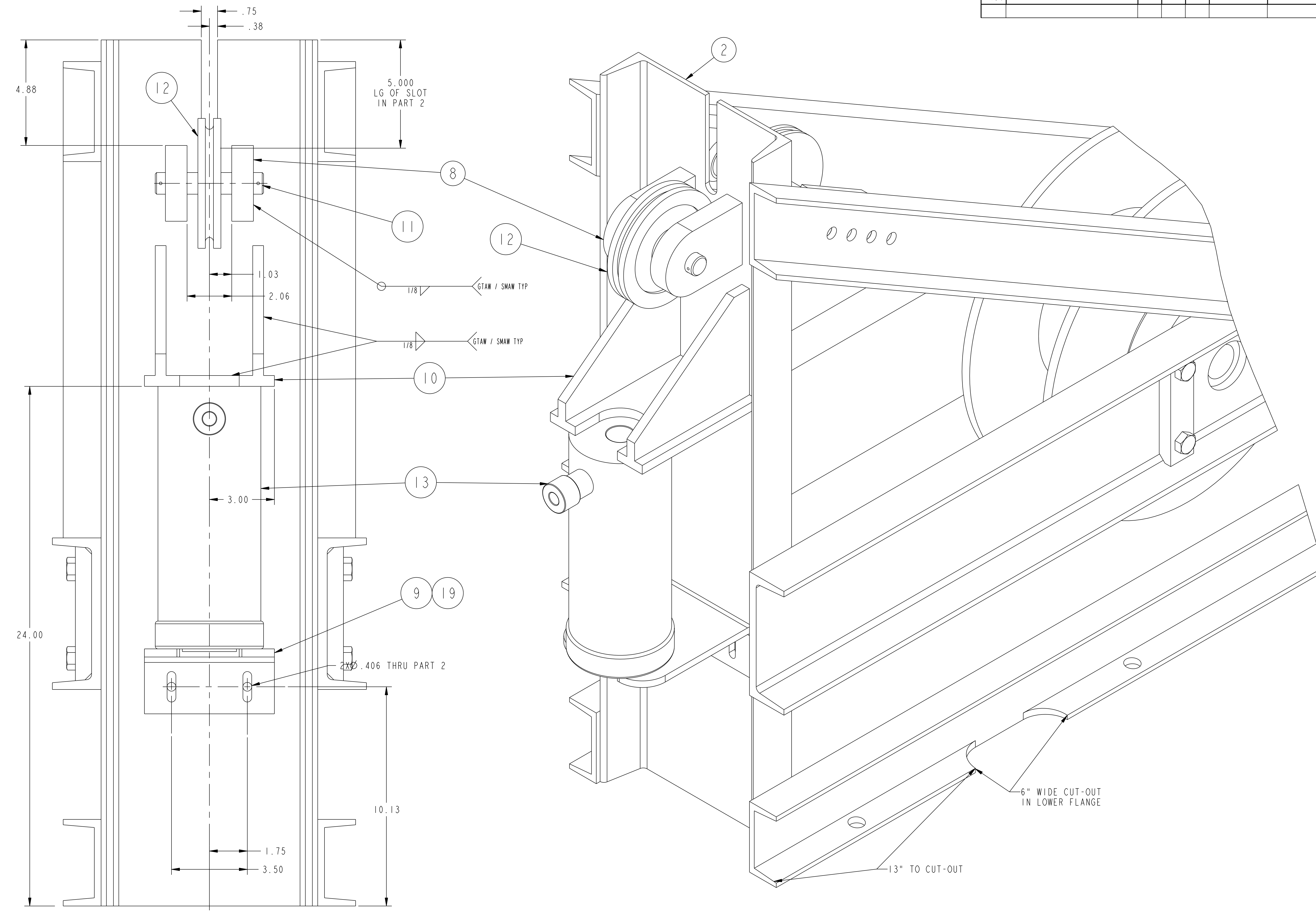
PART 9



PART 10



PART 11



REAR VIEW OF TENSIONING FRAME

ISOMETRIC VIEW TENSIONING FRAME REAR FLANGE CUT-OUT

RELEASED FOR FABRICATION / INSTALLATION
PPPL Drafting:

RELEASE LEVEL: Fabrication
DWG VERSION NO: 3

COMPUTER GENERATED DRAWING MANUAL CHANGES NOT PERMITTED Pro E	CENTRAL FILES: UNLESS OTHERWISE SPECIFIED	PRINCETON PLASMA PHYSICS LABORATORY PRINCETON UNIVERSITY NATIONAL COMPACT STELLARATOR EXPERIMENT	
DO NOT VERIFY INFORMATION BY SCALING DRAWING	DIMENSIONS ARE IN INCHES MACHINE SURFACES BREAK SHARP EDGES .005/.020	IF COIL WINDING ROOM TENSIONING REEL ASSEMBLY WELDMENT AND DETAILS	
WEIGHT 1082.7 lbs	TOLERANCES NON-CUMULATIVE	DSN: B. PAUL 8/25/05	DRAWING NO:
MODEL NAME SE1312-014	DECIMAL-INCH FRACTIONS	CHK: L. DUDEK 8/25/05	SE1312-014
WELDING ENGINEER L. DUDEK	NEXT ASSEMBLY	ENGR: J. CHRZANOWSKI 8/25/05	SHEET 3 OF 3
		SUPV: J. SIEGEL 8/25/05	REV 0

NCSX-SEI 1312-014