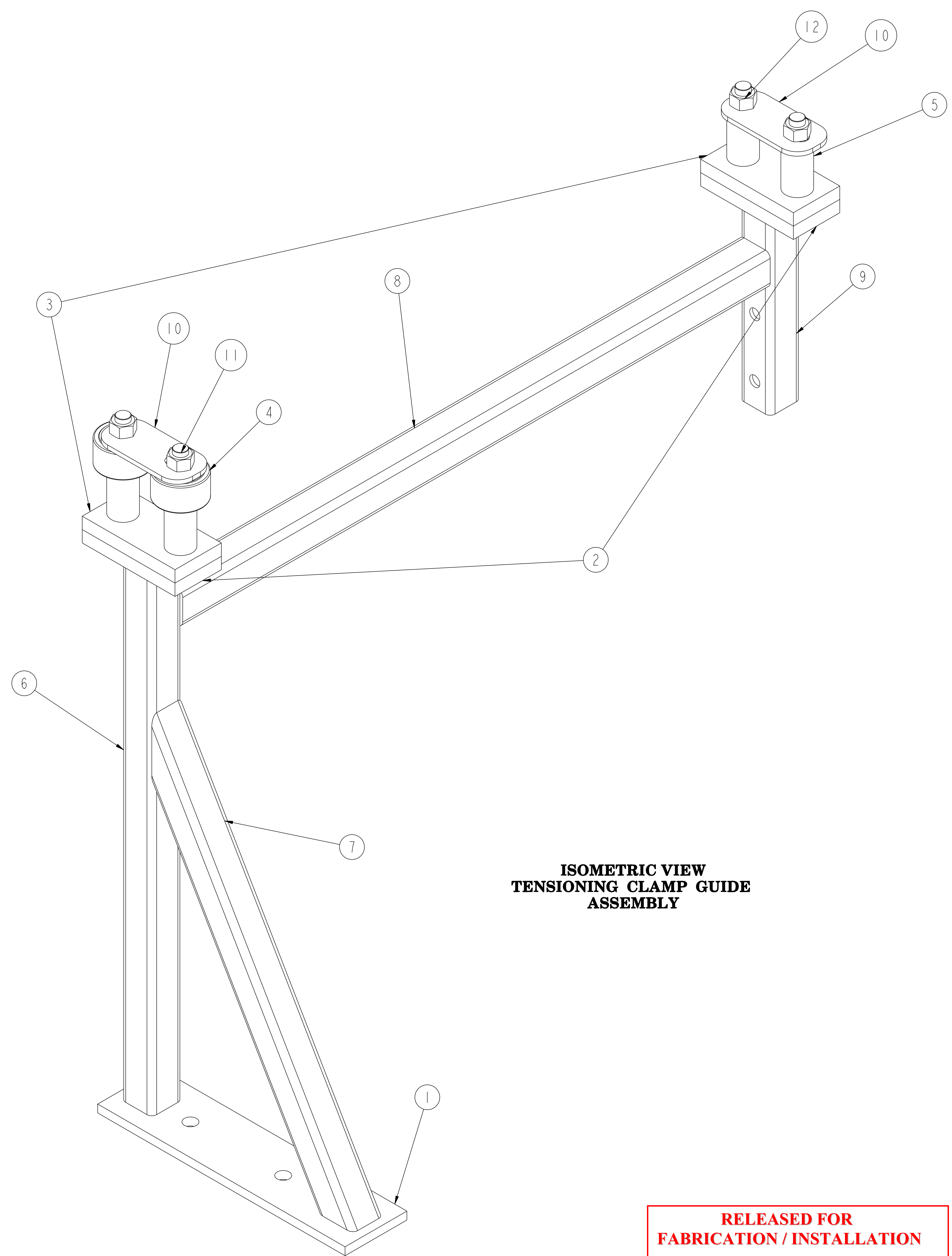
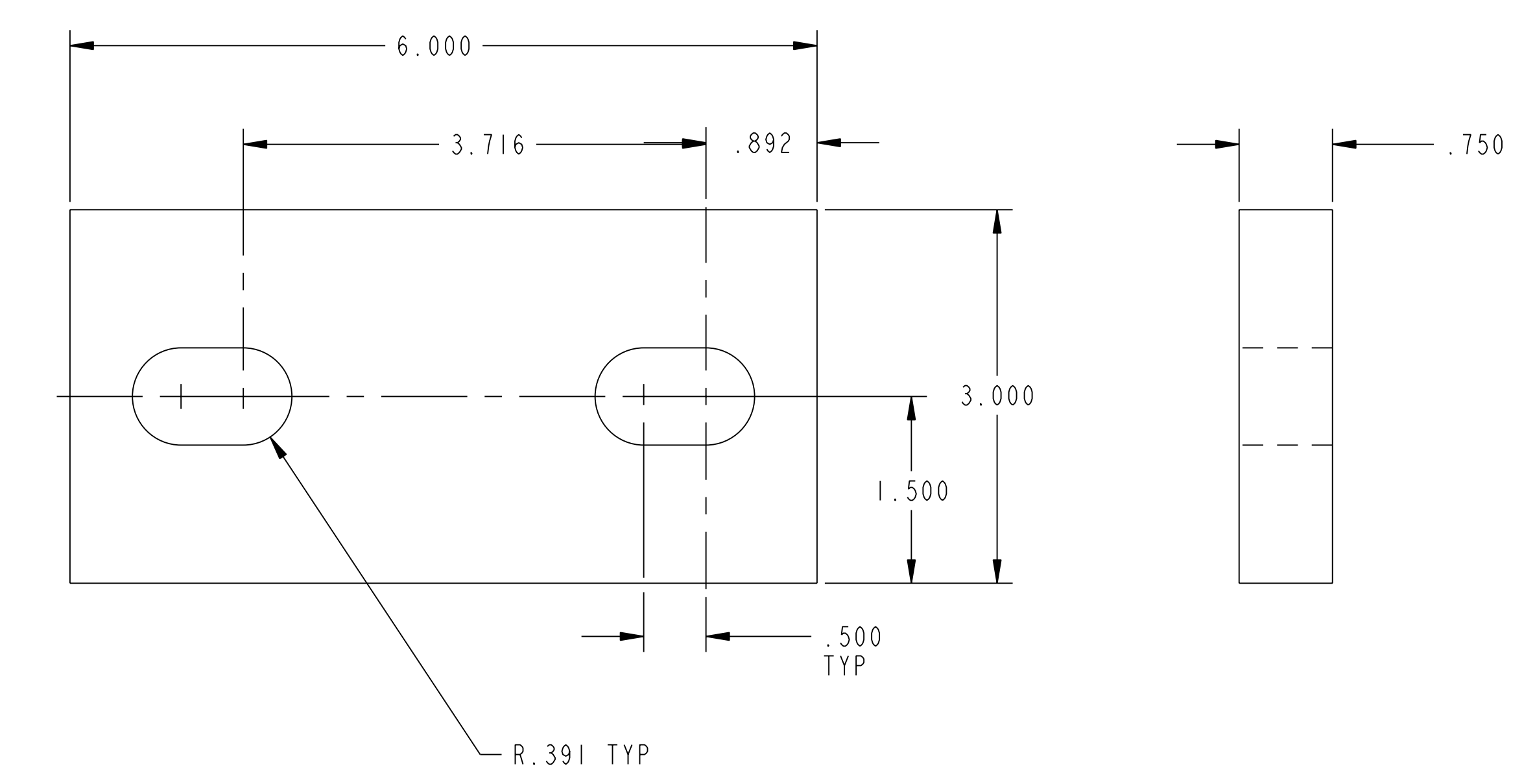


NO.	REVISION	BY	CH	SUP	APPROVED	DATE

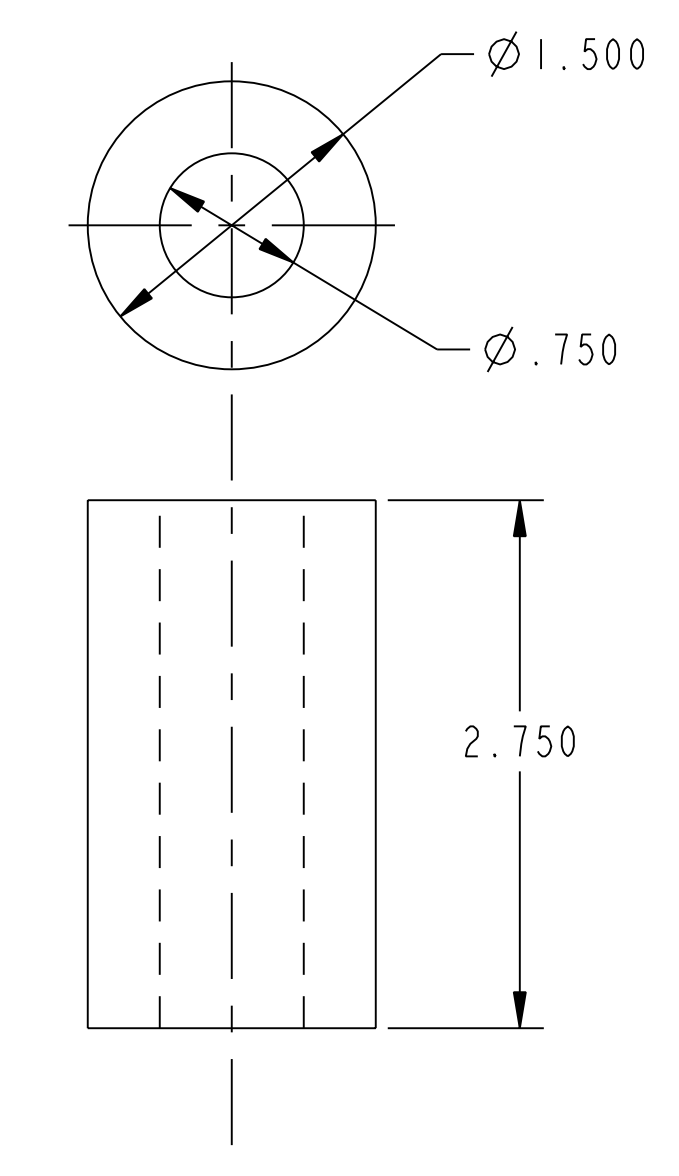


**ISOMETRIC VIEW  
TENSIONING CLAMP GUIDE  
ASSEMBLY**

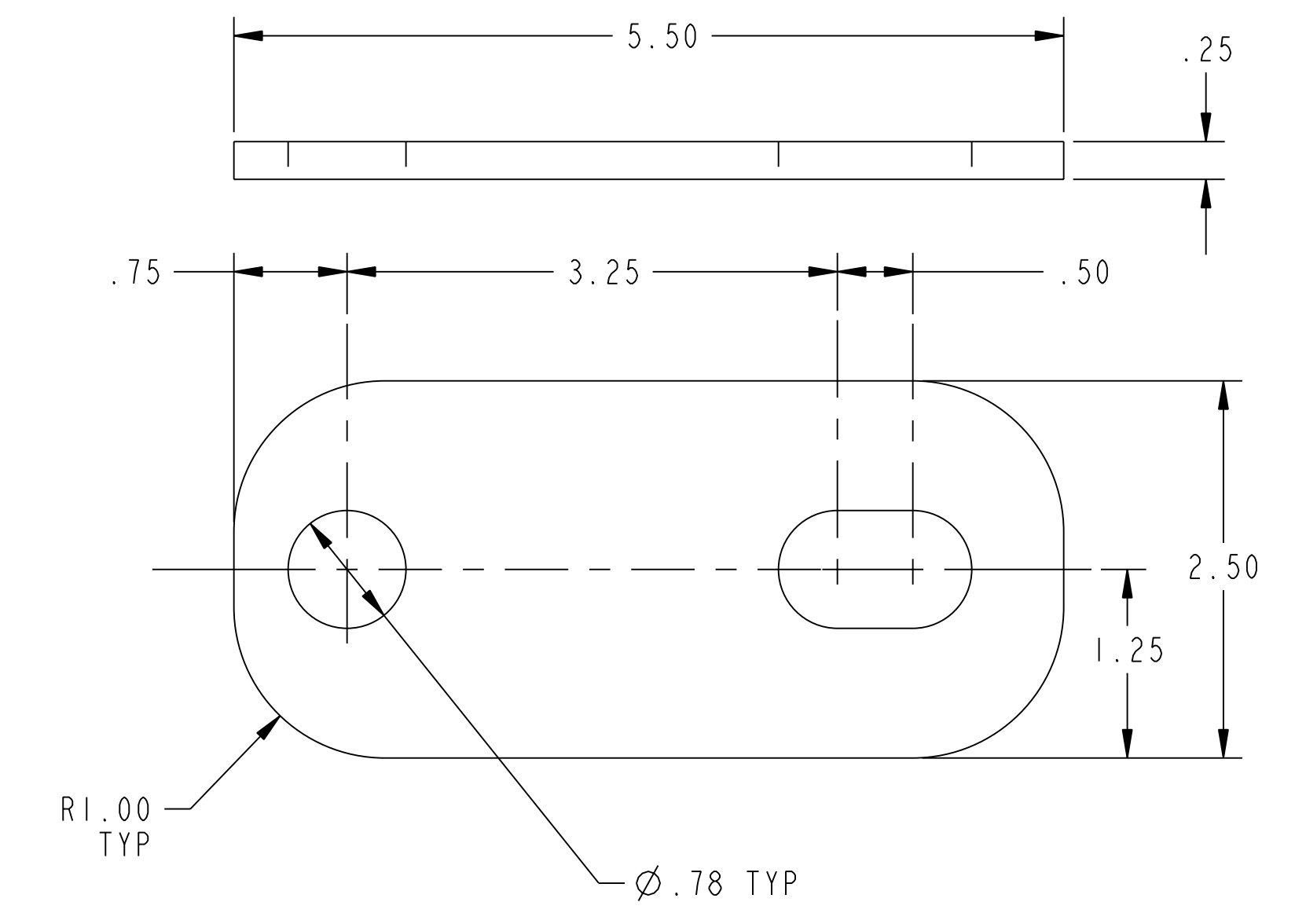
**RELEASED FOR  
FABRICATION / INSTALLATION**  
PPPL Drafting:



**PART 3**



**PART 5**



**PART 10**

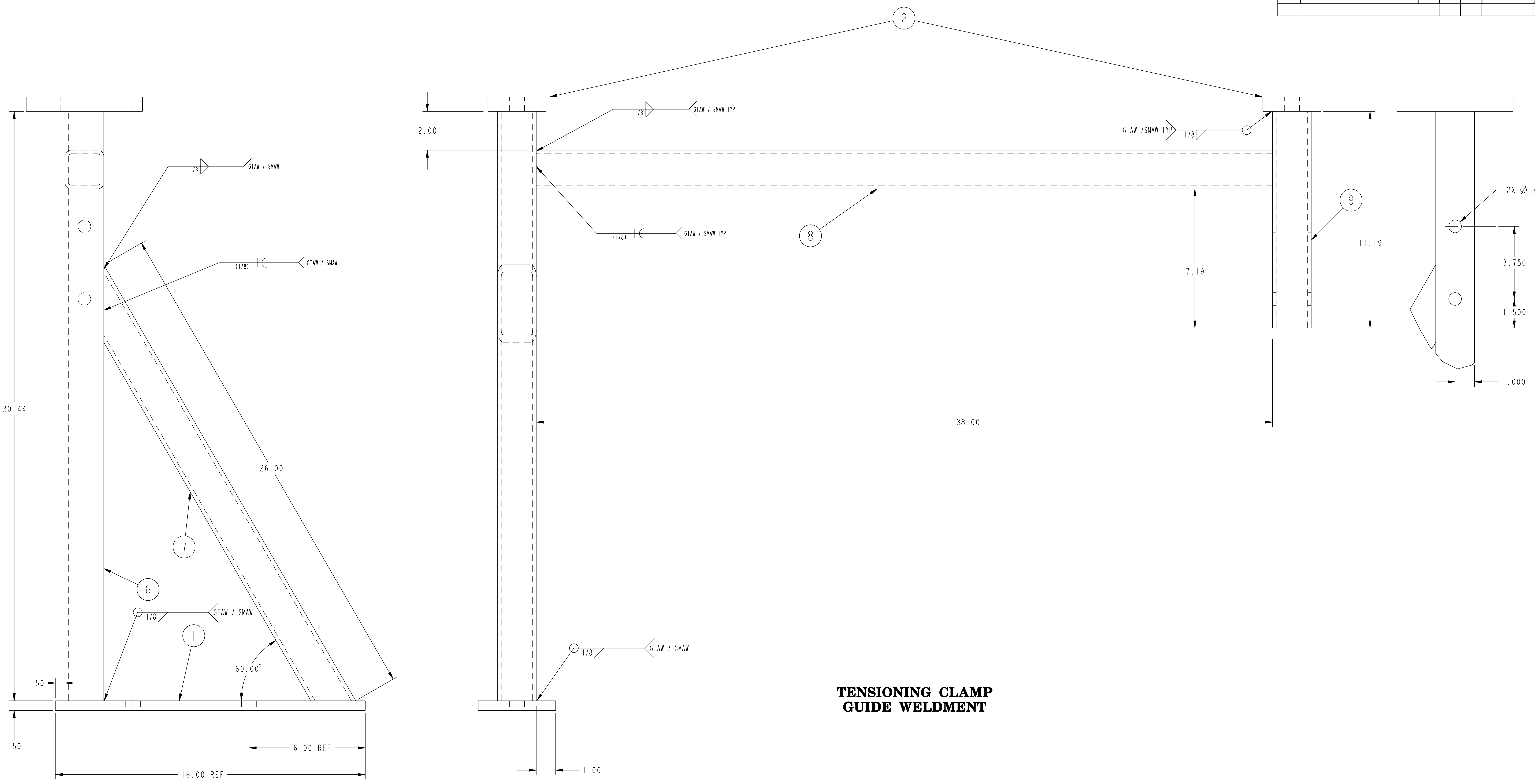
NOTES:  
1. WELDING SHALL BE PERFORMED IN ACCORDANCE WITH THE REQUIREMENTS OF AWS D1.1 AND PPPL PROCEDURE NO. ENG-037. VISUAL WELD INSPECTION SHALL BE PERFORMED IN ACCORDANCE WITH THE ACCEPTANCE CRITERIA OF AWS D1.1, 6.9.

ASSY	QTY	PART NO.	DRAWING NO	NOMENCLATURE OR DESCRIPTION	MATERIAL
	2	12		3/4-10UNC X 5 1/2" LG HEX BOLT WITH NUT	CS/SS
	2	11		3/4-10UNC X 7" LG HEX BOLT WITH NUT	CS/SS
	2	10	THIS DWG	1/8" TH'K PL 2 1/2"x5 1/2" (SEE DETAIL)	CS
	1	9	THIS DWG	2" SO. TUBING 3/16" WALL X 11-1/4" LG	CS
	1	8	THIS DWG	2" SO. TUBING 3/16" WALL X 38" LG	CS
	1	7	THIS DWG	2" SO. TUBING 3/16" WALL X 26" LG	CS
	1	6	THIS DWG	2" SO. TUBING 3/16" WALL X 30-7/16" LG	CS
	4	5	THIS DWG	1.50 O.D. X 2.75 LG TUBE (SEE DETAIL)	G10/G11
	2	4	COMM	PLAIN-BORE TRACK ROLLER 2 3/4"Ø BORE = 3/4" McMASTER CARR NO. 6831K53	-----
	2	3	THIS DWG	3/4" TH'K PLATE 3" X 6" (SEE DETAIL)	G10/G11
	2	2	THIS DWG	3/4" TH'K PLATE 3" X 6" (SEE DETAIL)	CS
	1	1	THIS DWG	1/2" TH'K PLATE 4" X 16" (SEE DETAIL)	CS
				TENSIONING CLAMP GUIDE ASSEMBLY	-----

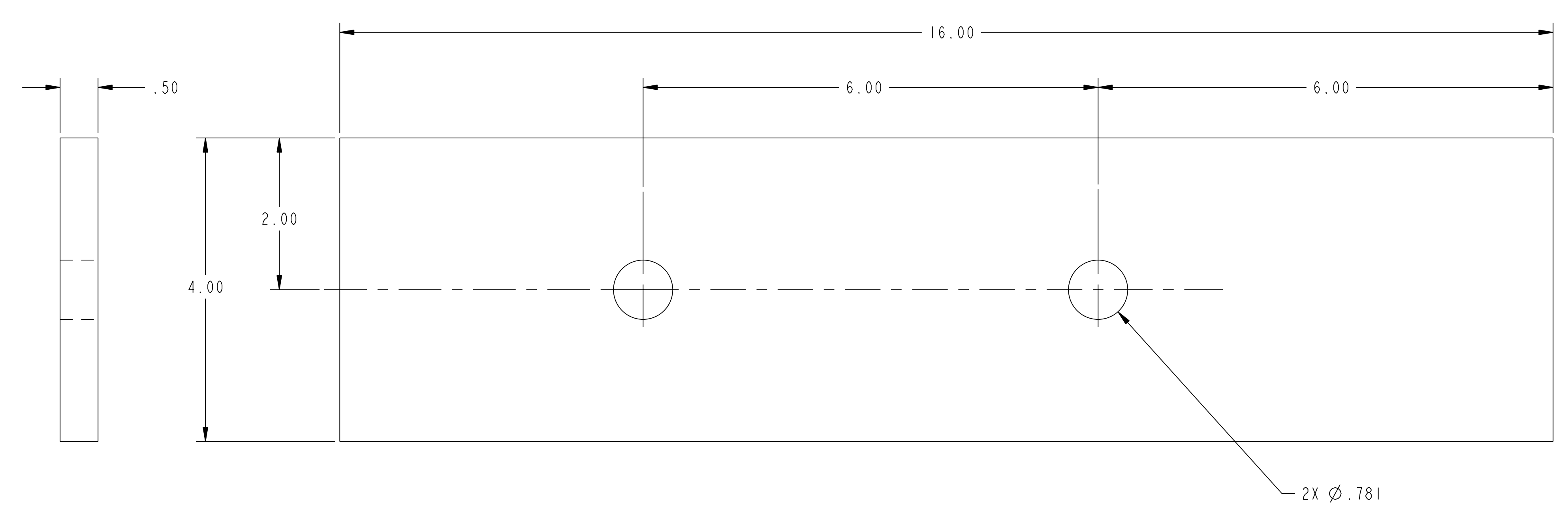
WEIGHT 75.4 lbs	MODEL NAME SE1312-015	WELDING ENGINEER L. DUDEK	COMPUTER GENERATED DRAWING MANUAL CHANGES NOT PERMITTED PPPL	CENTRAL FILES: UNLESS OTHERWISE SPECIFIED DIMENSIONS ARE IN INCHES MACHINE SURFACES BREAK SHARP EDGES .005/.020	PRINCETON PLASMA PHYSICS LABORATORY PRINCETON UNIVERSITY NATIONAL COMPACT STELLARATOR EXPERIMENT IF COIL WINDING ROOM TENSIONING CLAMP GUIDE ASSEMBLY WELDMENT AND DETAILS
RELEASE LEVEL: Fabrication DWG VERSION NO: 4	NEXT ASSEMBLY	TOLERANCES NON-CUMULATIVE DECIMAL-INCH FRACTIONS .XX ±.005 .125-.150 ±.010 .XXX ±.005 .125-.150 ±.010 ANGULAR ±.0°-15° OVER 120° ±.1°	DO NOT VERIFY INFORMATION BY SCALING DRAWING	DSN: B. PAUL 8/25/05 CHK: L. DUDEK 8/25/05 ENGR: J. CHRZANOWSKI 8/25/05 SUPV: J. SIEGEL 8/25/05	DRAWING NO: <b>SE1312-015</b> SHEET 1 OF 2 REV 0

NCSX-SE1312-015

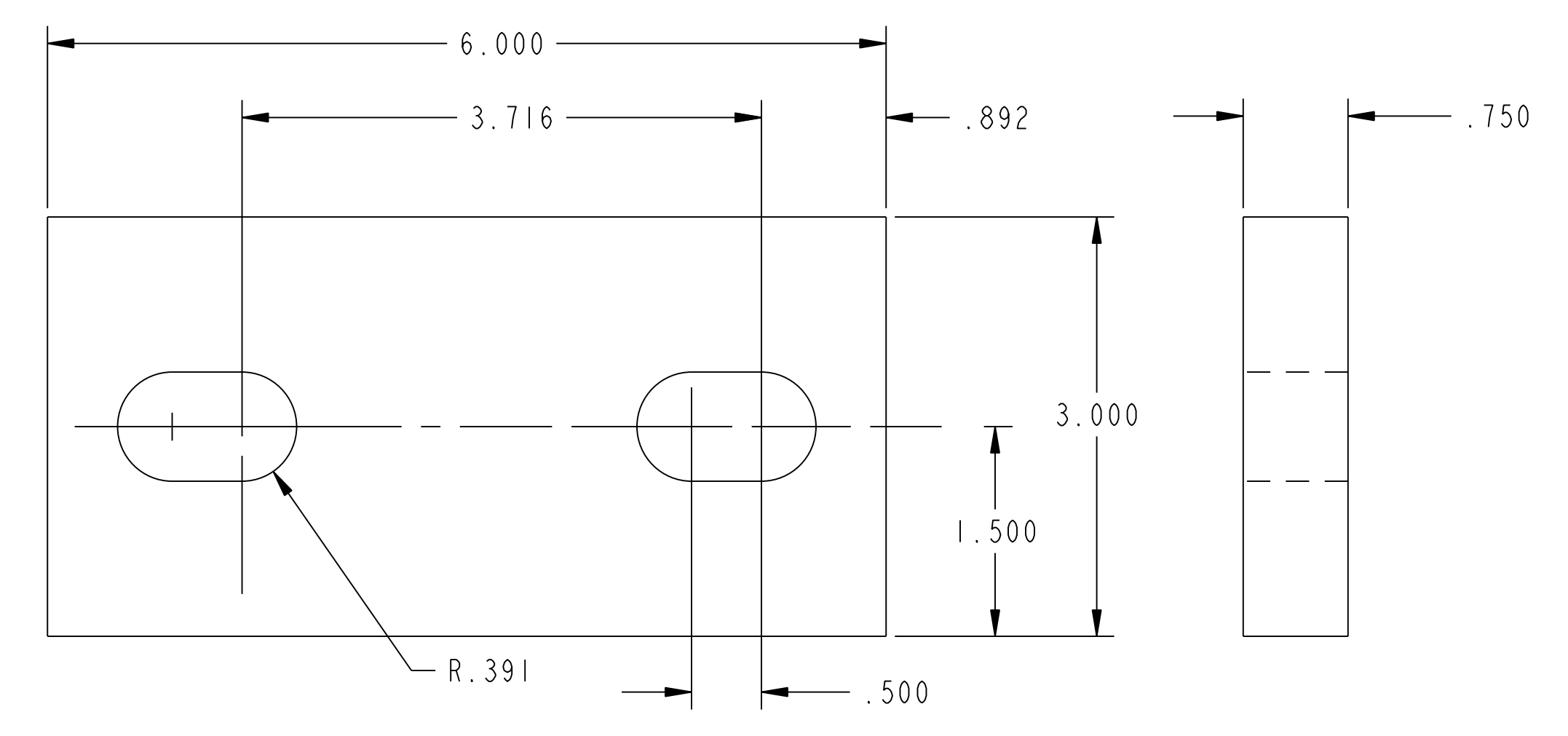
NO.	REVISION	BY	CH	SUP	APPROVED	DATE



**TENSIONING CLAMP  
GUIDE WELDMENT**



**PART 1**



**RELEASED FOR  
FABRICATION / INSTALLATION**  
PPPL Drafting:

**PART 2**

RELEASE LEVEL: Fabrication  
DWG VERSION NO: 4

WEIGHT	75.4 lbs
MODEL NAME	SE1312-015
WELDING ENGINEER	L. DUDEK

COMPUTER GENERATED DRAWING MANUAL CHANGES NOT PERMITTED Pro E	CENTRAL FILES: UNLESS OTHERWISE SPECIFIED	PRINCETON PLASMA PHYSICS LABORATORY PRINCETON UNIVERSITY <b>NATIONAL COMPACT STELLARATOR EXPERIMENT</b>
DO NOT VERIFY INFORMATION BY SCALING DRAWING	DIMENSIONS ARE IN INCHES MACHINE SURFACES BREAK SHARP EDGES .005/.020	IF COIL WINDING ROOM TENSIONING CLAMP GUIDE ASSEMBLY WELDMENT AND DETAILS
NEXT ASSEMBLY	TOLERANCES NON-CUMULATIVE DECIMAL-INCH FRACTIONS .XX ±.000 .XXX ±.005 ANGULAR ±.0°-15° OVER 120° ±.1°-1°	DSN: B. PAUL 8/25/05 CHK: L. DUDEK 8/25/05 ENGR: J. CHRZANOWSKI 8/25/05 SUPV: J. SIEGEL 8/25/05
DRAWING NO: <b>SE1312-015</b>	SHEET 2 OF 2	REV 0

NCSX-SET 1312-015