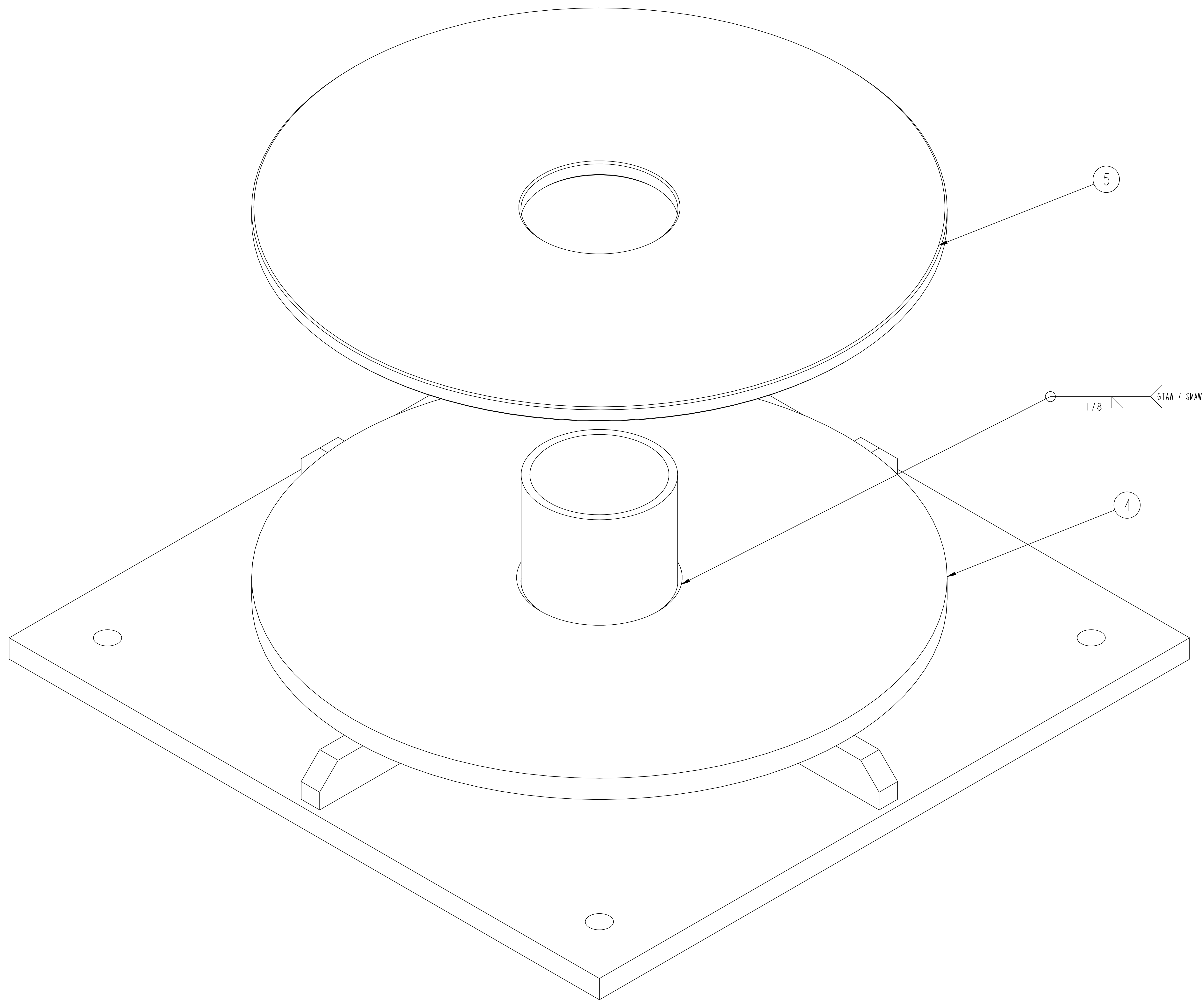


NO.	REVISION	BY	CH	SUP	APPROVED	DATE



**RELEASED FOR  
FABRICATION / INSTALLATION**

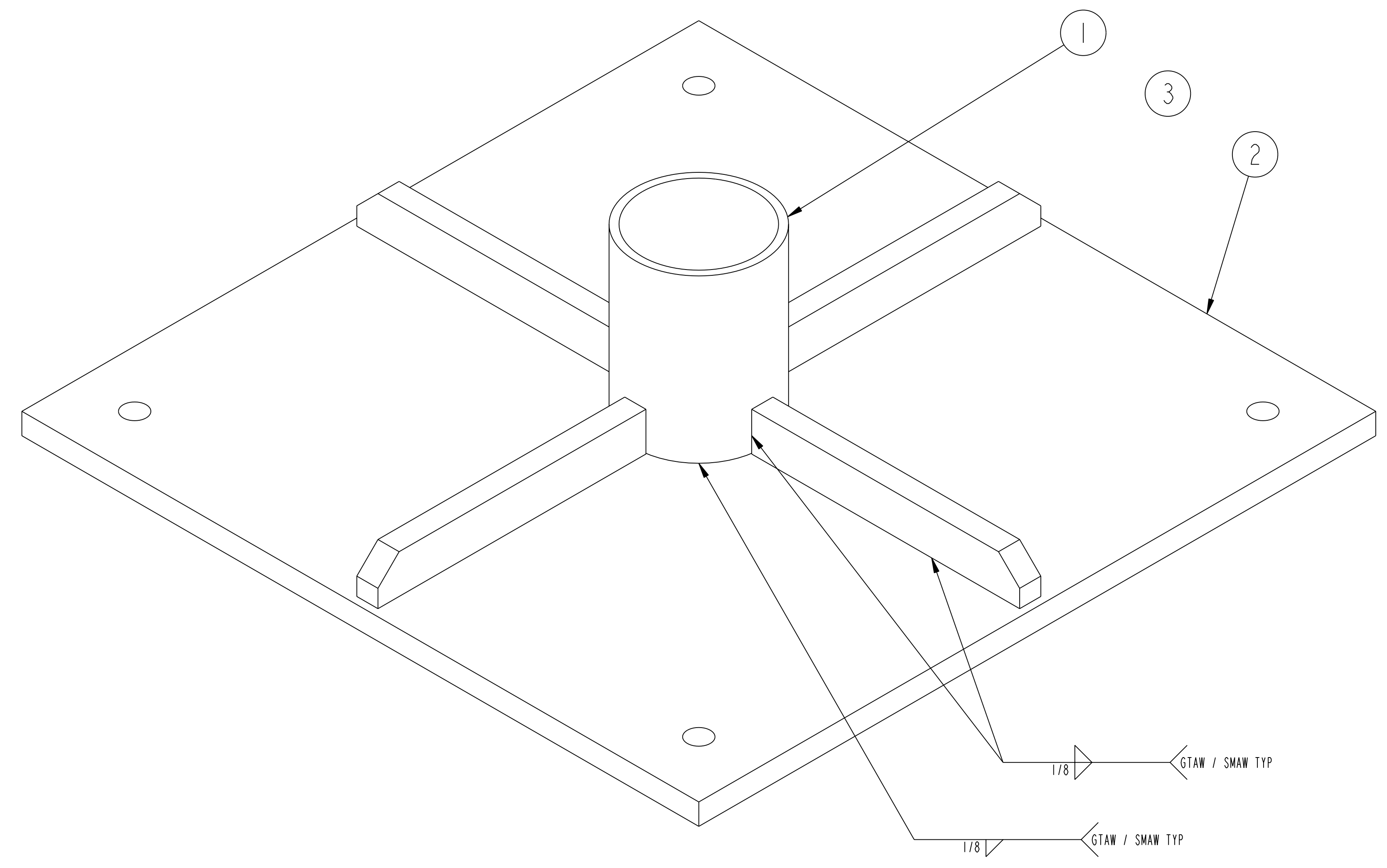
PPPL Drafting:

NOTES:  
1. WELDING SHALL BE PERFORMED IN ACCORDANCE WITH THE REQUIREMENTS OF AWS D1.1 AND PPPL PROCEDURE NO. ENG-037. VISUAL WELD INSPECTION SHALL BE PERFORMED IN ACCORDANCE WITH THE ACCEPTANCE CRITERIA OF AWS D1.1, 6.9.

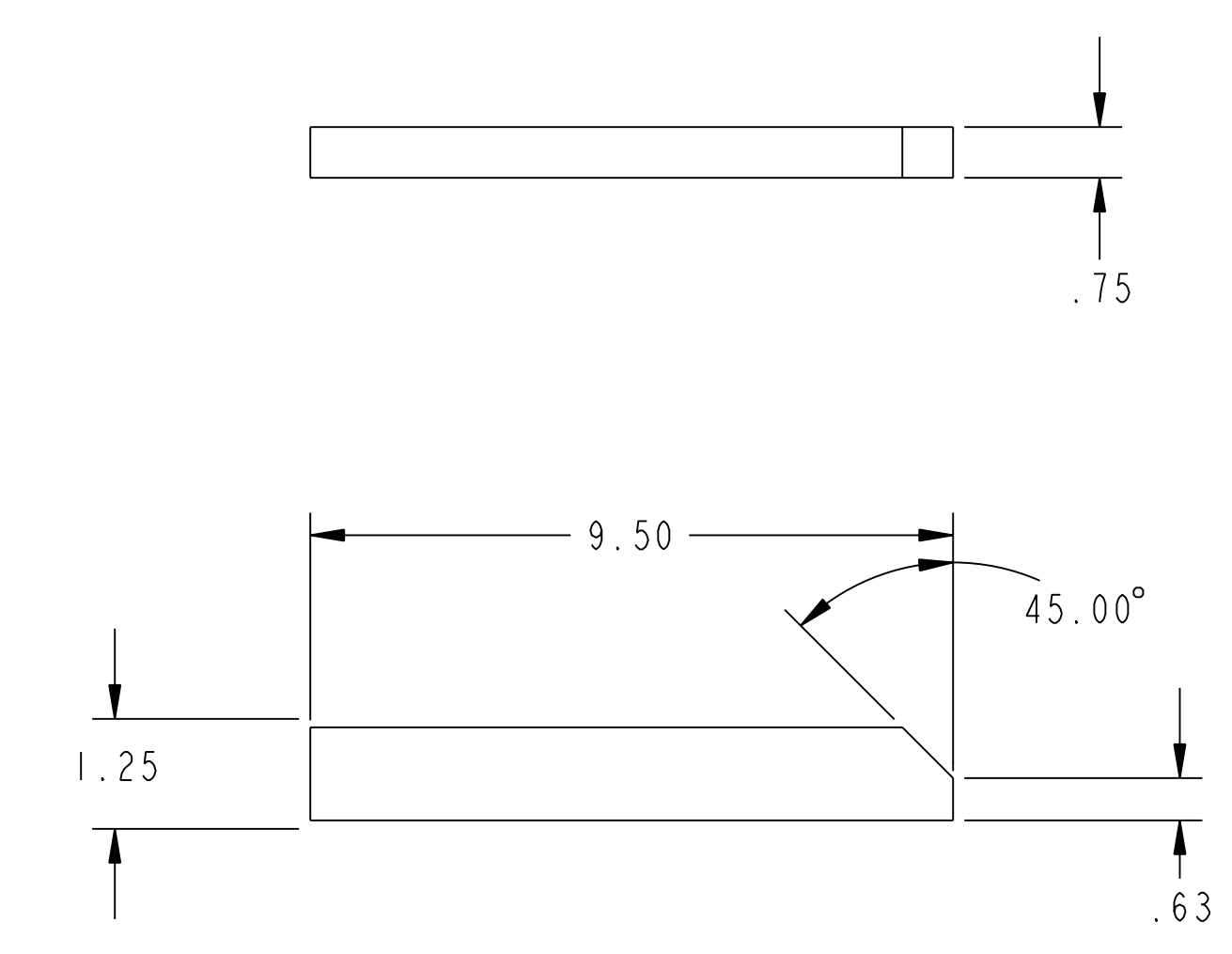
**ISOMETRIC VIEW  
PIVOT PLATE ASSEMBLY**

			5	THIS DWG	Ø20" X .50 TH'K PLATE (SEE DETAIL)	TEFLON
			4	THIS DWG	Ø20" X .75 TH'K PLATE (SEE DETAIL)	CS
			4	THIS DWG	.75 TH'K X 1.25 X 9.50 (SEE DETAIL)	CS
			2	THIS DWG	.75 TH'K X 24" SQ. PLATE (SEE DETAIL)	CS
			1	THIS DWG	4" SCH 40 PIPE X 6" LG	CS
			1	THIS DWG	PIVOT PLATE ASSEMBLY	-----
03	02	01	PART NO.	DRAWING NO	NOMENCLATURE OR DESCRIPTION	MATERIAL
ASSY QTY			PARTS LIST			
COMPUTER GENERATED DRAWING MANUAL CHANGES NOT PERMITTED			CENTRAL FILES: UNLESS OTHERWISE SPECIFIED		PRINCETON PLASMA PHYSICS LABORATORY PRINCETON UNIVERSITY <b>NATIONAL COMPACT STELLARATOR EXPERIMENT</b>	
PRO E			DIMENSIONS ARE IN INCHES MACHINE SURFACES		IF COIL WINDING ROOM COUNDTOR TENSIONING AND WRAPING TABLE PIVOT PLATE	
DO NOT VERIFY INFORMATION BY SCALING DRAWING			TOLERANCES NON-CUMULATIVE		DSN: B. PAUL 8/15/05 DRAWING NO:	
NEXT ASSEMBLY			DECIMAL-INCH FRACTIONS		CHK: M. KALISH 8/15/05	
			.XX +/- .030 12"-12" +/- .120		ENGR: J. CHRZANOWSKI 8/15/05	
			.XXX +/- .005 12"-120" +/- .124		SUPV: J. SEIGEL 8/15/05	
			ANGULAR +/- 0°-15'		OVER 120° +/- .122	
			WEIGHT		240.8 lbs	
			MODEL NAME		SE1312-018	
			WELDING ENGINEER		R. KEILBACH	
			RELEASE LEVEL: FABRICATION		DWG VERSION NO: 3	
					SE1312-018	
					SHEET 1 OF 2	
					REV 0	

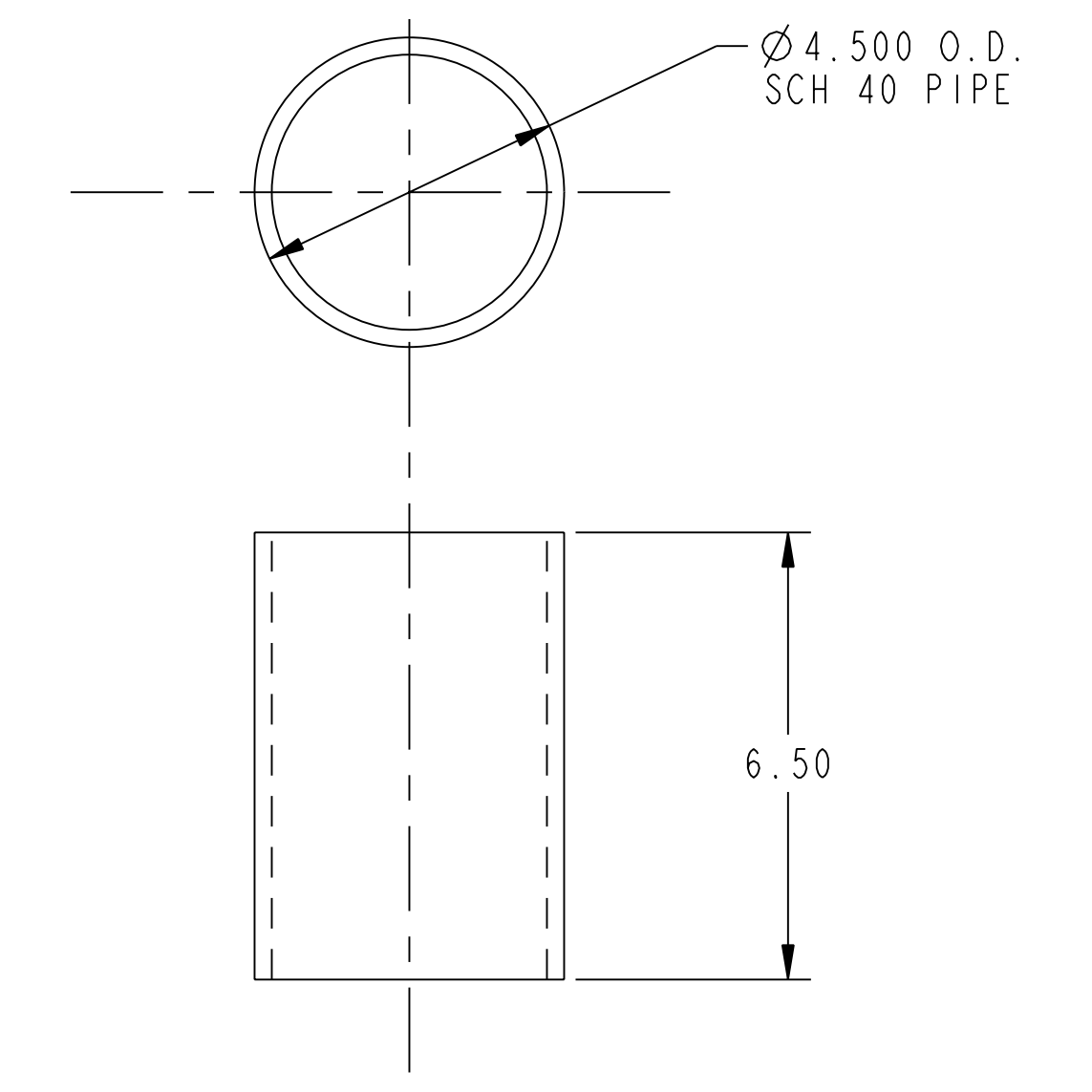
NCSX-SE1312-018



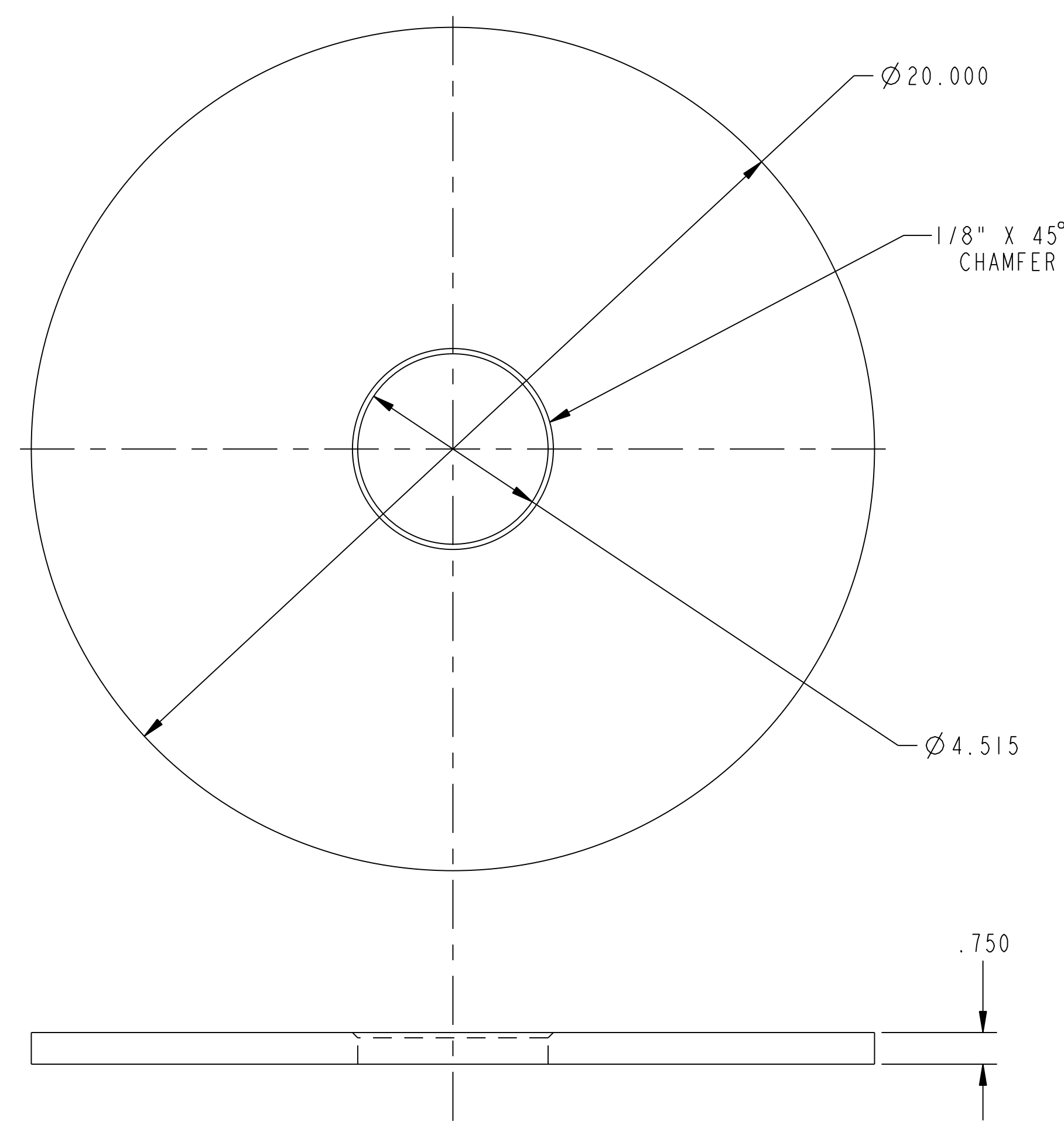
**ISOMETRIC VIEW  
WELDMENT OF PARTS 1 THRU 3**



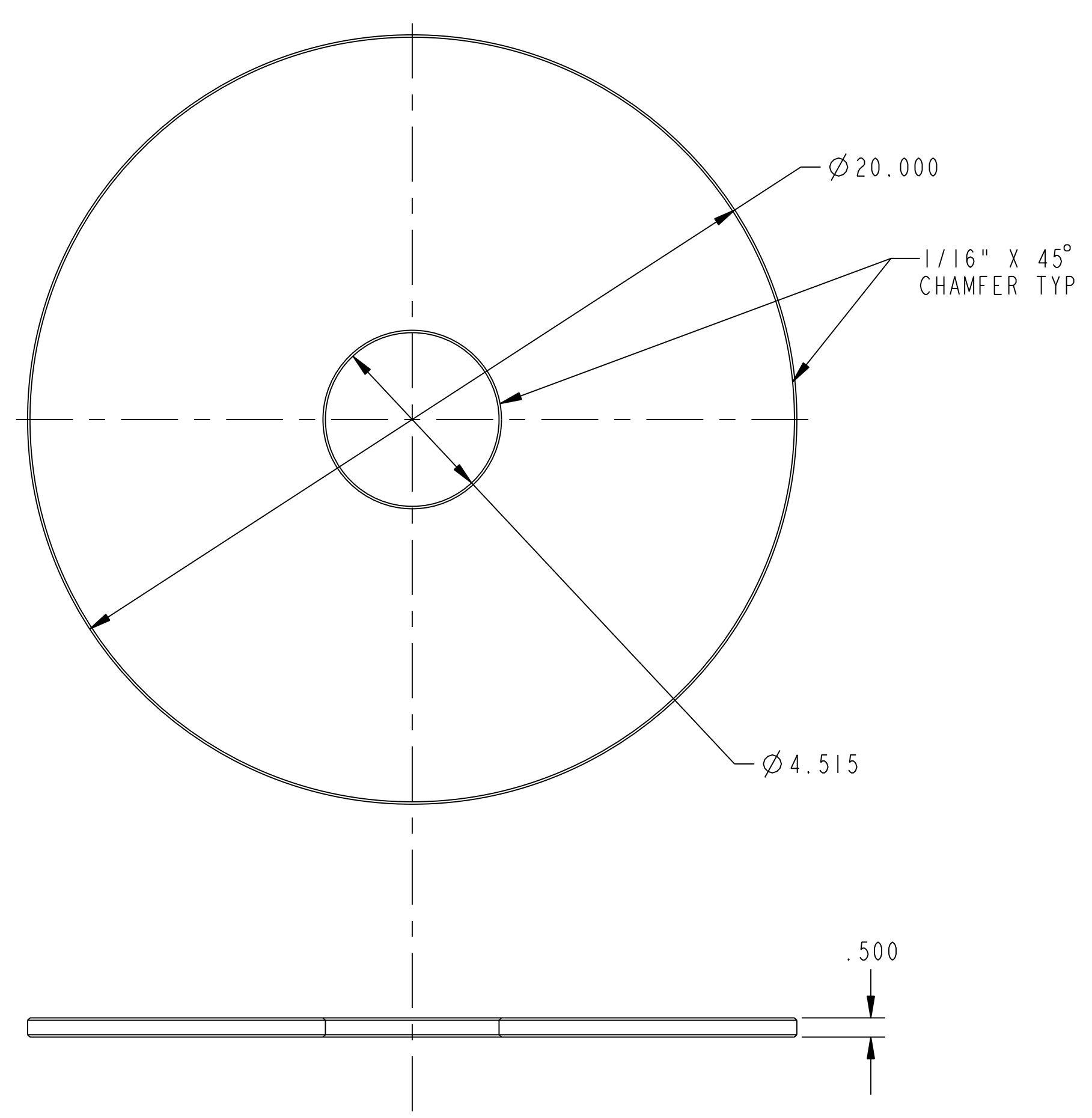
**PART 3**



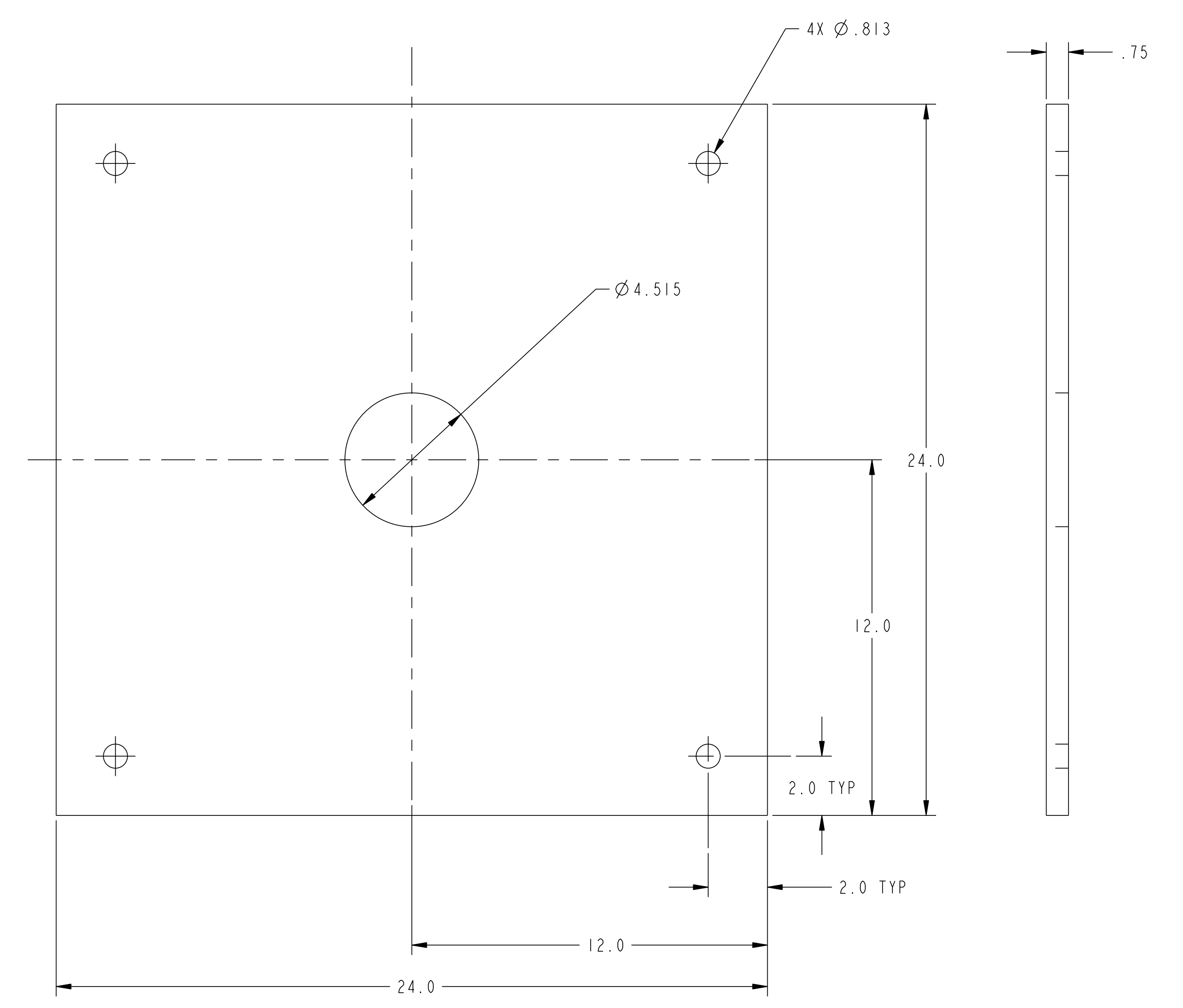
**PART 1**



**PART 4**



**PART 5**



**PART 2**

**RELEASED FOR  
FABRICATION / INSTALLATION**  
PPPL Drafting:

**RELEASE LEVEL: Fabrication  
DWG VERSION NO: 3**

WEIGHT	240.8 lbs
MODEL NAME	SE1312-018
WELDING ENGINEER	R. KEILBACH

COMPUTER GENERATED DRAWING MANUAL CHANGES NOT PERMITTED Pro E	CENTRAL FILES: UNLESS OTHERWISE SPECIFIED	PRINCETON PLASMA PHYSICS LABORATORY PRINCETON UNIVERSITY <b>NATIONAL COMPACT STELLATOR EXPERIMENT</b>	
DO NOT VERIFY INFORMATION BY SCALING DRAWING	DIMENSIONS ARE IN INCHES MACHINE SURFACES BREAK SHARP EDGES .005/.020	IF COIL WINDING ROOM CONDUCTOR TENSIONING AND WRAPING TABLE PIVOT PLATE	
NEXT ASSEMBLY	TOLERANCES NON-CUMULATIVE DECIMAL-INCH FRACTIONS .XX ±.000 .XXX ±.005 ANGULAR ±.0°-15°	DSN: B. PAUL 8/15/05	DRAWING NO: SE1312-018
		CHK: M. KALISH 8/15/05	ENGR: J. CHRZANOWSKI 8/15/05
		SUPV: J. SEIGEL 8/15/05	SHEET 2 OF 2 REV 0

NCSX-SET 1312-018