



Figure 1. Failure mode for Flexure specimens at 295 K (flatwise direction at top, edgewise direction at bottom).

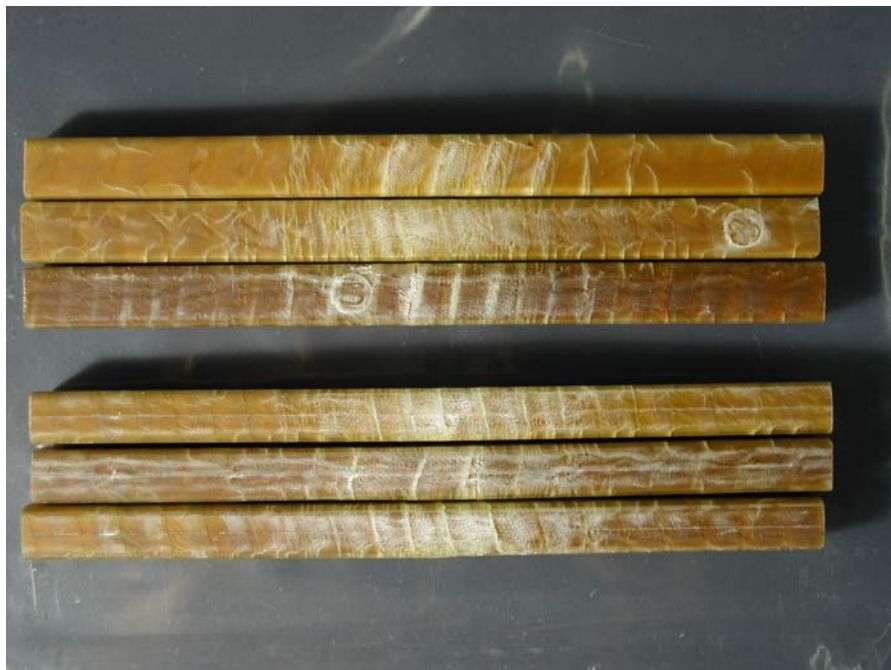


Figure 2. Failure mode for Flexure specimens at 150 K (flatwise direction at top, edgewise direction at bottom).



Figure 3. Failure mode for Flexure specimens at 100 K (flatwise direction at top, edgewise direction at bottom).



Figure 4. Failure mode for Flexure specimens at 76 K (flatwise direction at top, edgewise direction at bottom).

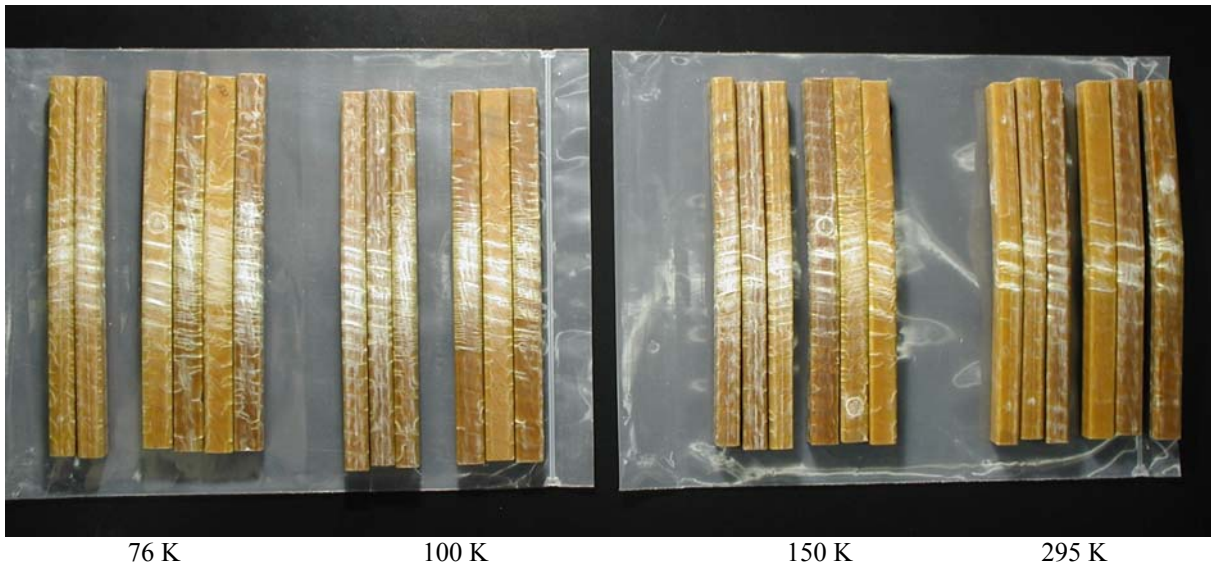


Figure 5. Comparison of typical failure characteristic at all four test temperatures.

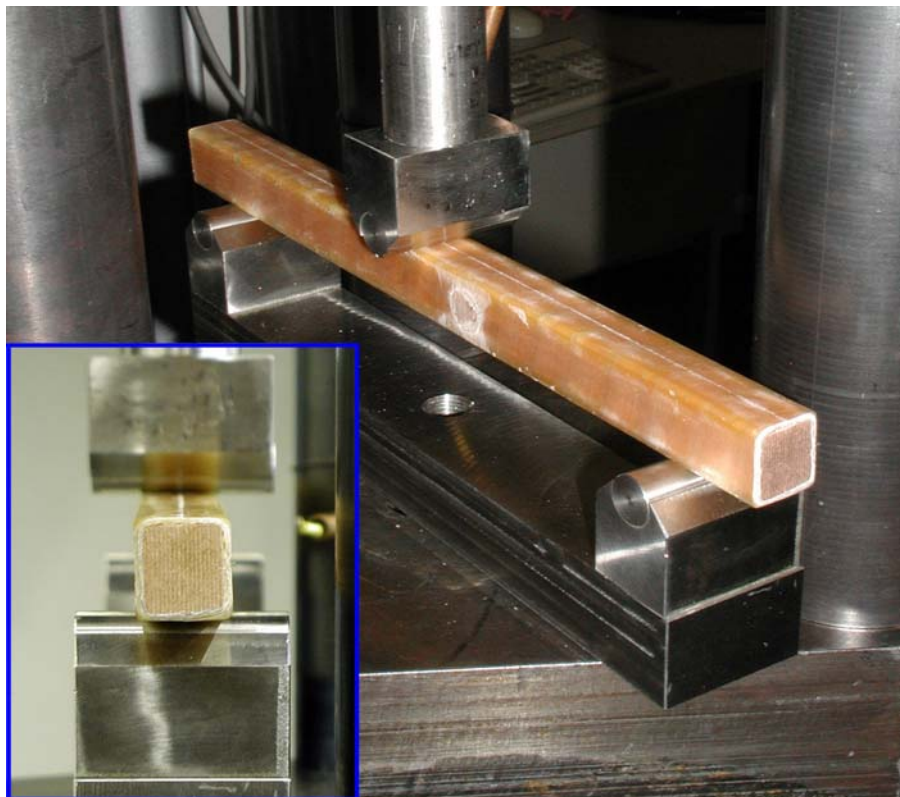


Figure 6. Specimen orientation for edgewise flexure testing.



COMPOSITE TECHNOLOGY DEVELOPMENT, INC.

ENGINEERED MATERIAL SOLUTIONS

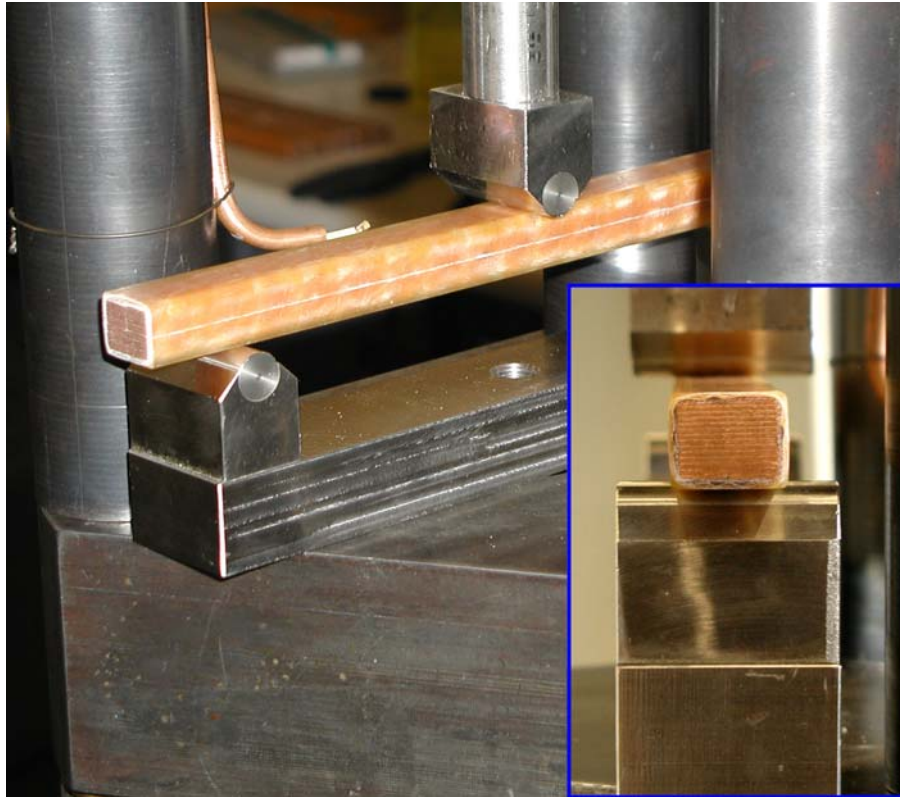


Figure 7. Specimen orientation for flatwise flexure testing.