

**NCSX ENGINEERING CHANGE NOTICE (ECN) ECN # 5376**

<b>COGNIZANT INDIVIDUAL:</b>	Mike Cole
<b>ECN TITLE:</b> Relocating Wing Bladder on C Mod Coil	
<b>CC/WP/Job:</b>	/1806
<b>AREA OR PROJECT:</b>	NCSX

LIMITATION OF SCOPE - NOTE: A Work Planning Form is NOT required if the total change to be accomplished (ENG-032):

- Is not large or complex or does not represent a new installation into a usable space
- Does not have a significant ES&H impact
- Does not involve tritium or other radioactive contaminated or activated equipment
- Does not impact multiple projects, systems, or groups

OR does not change the scope or intent of the original design.

Responsible Line Manager CONCURRENCE: \_\_Phil Heitzenroder  
(Signature indicates that no Work Planning form is required.)

If non-concurrence or associated with a work planning form, enter the WP number:

DRAWING(S) AFFECTED NUMBER:	Current Revision	TITLE
SE140-003	2	MODULAR COIL ASSEMBLY ½ FIELD PERIOD
SE140-050	0	WING SUPPORT BLADDER
Continued on the Back		

**NCSX ENGINEERING CHANGE NOTICE (ECN) ECN # 5376**

**COGNIZANT INDIVIDUAL:** Mike Cole

**ECN TITLE:** Relocating Wing Bladder on C Mod Coil

**CC/WP/Job:** /1806

**AREA OR PROJECT:** NCSX

**DESCRIPTION OF CHANGE: (state drawing no., zone, group, or list attachments)**

SE140-003

RELOCATED WING BLADDER #6 AND ADDED 2 NOTES. ADDED OPTIONAL ADDITIONAL #6 BLADDER.

SE140-050

RELOCATED WING BLADDER #6 AND ADDED 2 NOTES. ADDED OPTIONAL ADDITIONAL #6 BLADDER.

**REASON FOR CHANGE:**

SE140-003 – Locate bladder based on documented analysis and provide optional bladder location higher on wing for additional support.

SE140-046 – Locate bladder based on documented analysis and provide optional bladder location higher on wing for additional support.

**ENGINEERING CHANGE NOTICE APPROVALS:**     **DATE:** 7/2/2008

**COGNIZANT INDIVIDUAL MAKING CHANGE:**

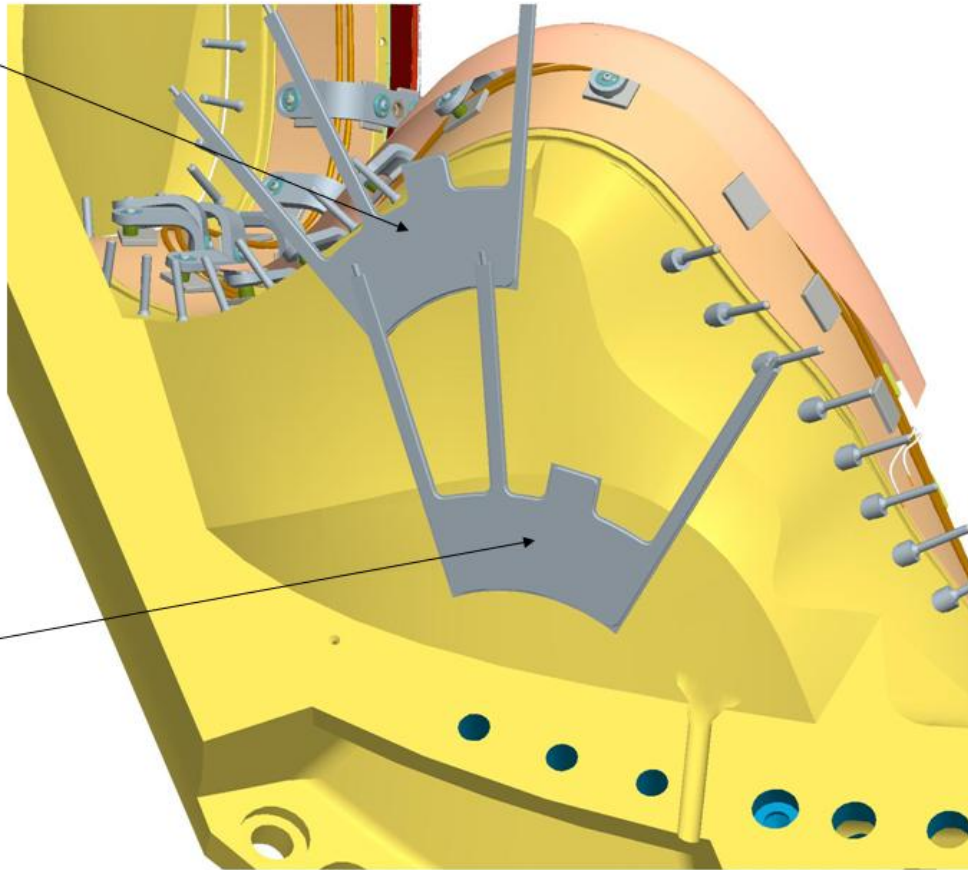
**RESPONSIBLE LINE MANAGER:**

☒ **Update Drawings Immediately**     ☐ **Defer Update and Use ECN Stamp**

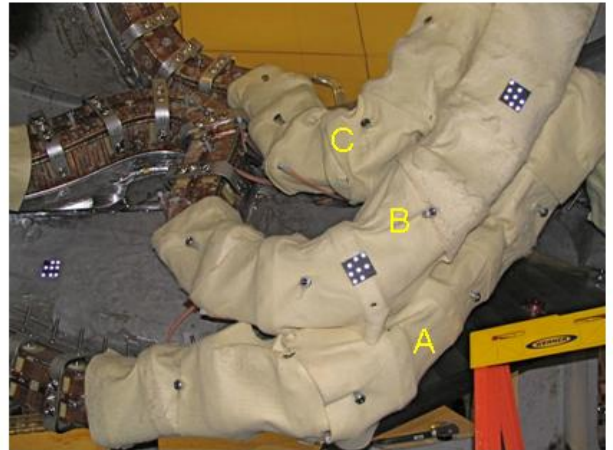
**Other Comments:**

Optional Second  
Bag located at  
tip of wing  
attached with  
clips or other  
suitable holding  
features

Location of # 6  
Bag over pocket  
in C Coil

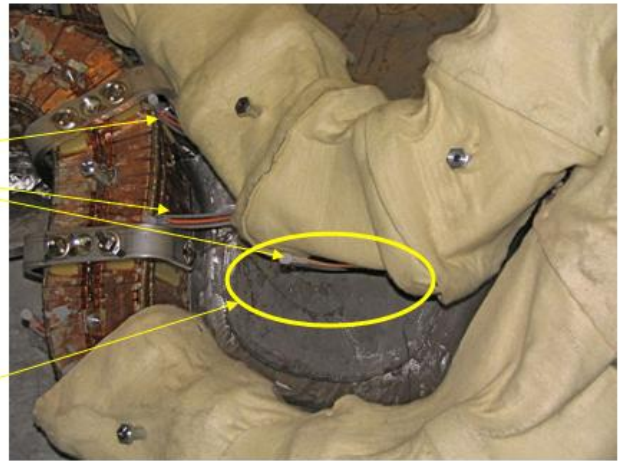


## Photos of A1-B1-C1



Shim bag sprues

This area shown in  
More detail on next slide



This bag is in the  
"optional" area  
shown in slide 1



Note the recess milled into B coil.  
This will keep the bag from  
moving around.