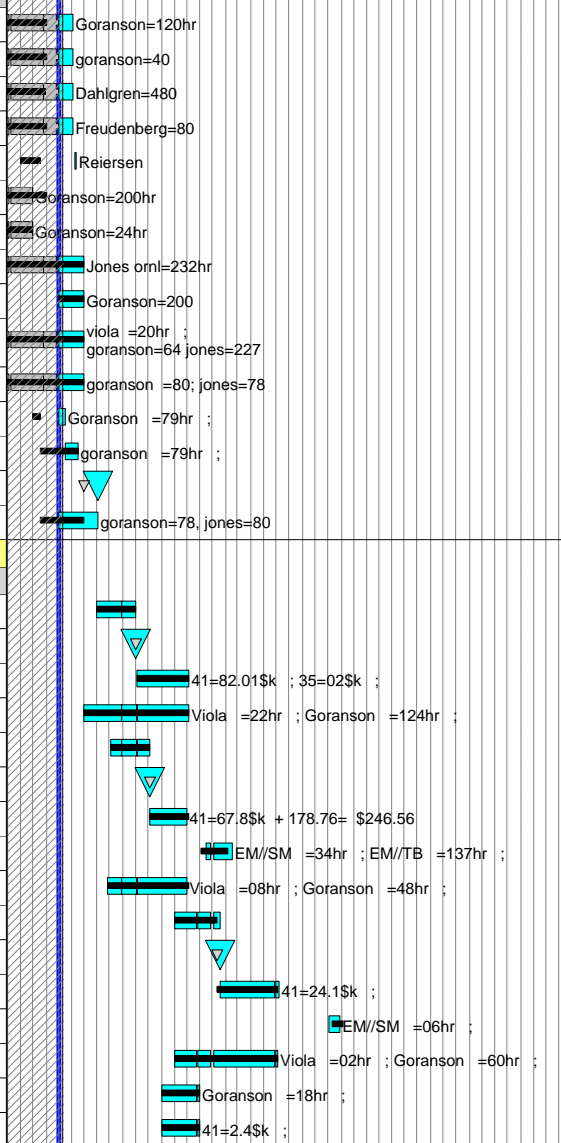
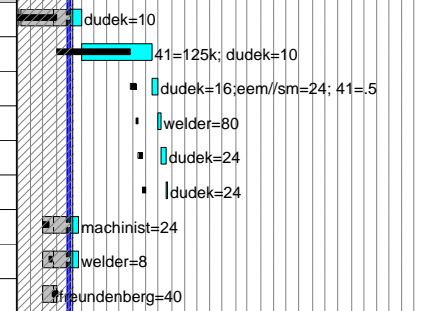


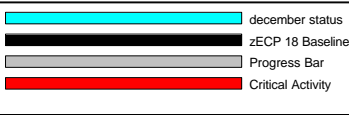
Activity ID	Activity Description	Baseline Start	Forecast Start	Orig Dur	Baseline Finish	Forecast Finish	Total Float	PCTC	Earned value cost (BCWP)	Budget	ETC ADD'L COST	FY05	FY06	FY07	FY08
cc 9450 - NCSX Fabrication (MIE)															
1 - Stellarator Core Systems															
12 - Vacuum Vessel Systems															
Job: 1203 - Vacuum Vessel Final Dsn-GORANSON															
Final Design Tasks															
1203-161	Finalize & Sign All ICDs	20NOV03A	20NOV03A	303*	01DEC04	04FEB05	296	90	14,447.30	16,052.56					
1203-201	Update/Perform FMECA Analyses	01MAR04A	01MAR04A	234*	30NOV04	04FEB05	291	95	5,140.25	5,410.79					
1203-232	Structural Analysis of Vac Vsl	01MAR04A	01MAR04A	234*	29NOV04	04FEB05	296	98	76,531.88	78,093.75					
1203-239	Perform Analysis of VV Supports	01MAR04A	01MAR04A	234*	01DEC04	04FEB05	296	95	10,171.68	10,707.03					
1203-241	Check FMECA Analyses	01OCT04*	07FEB05	5	15NOV04	11FEB05	291		0.00	0.00					
1203-261	Startup Plan	01OCT03A	01OCT03A	298*	01DEC04	29OCT04A		100	26,019.26	26,019.26					
1203-301	Update Cost and Schedule Estimates	01SEP04A	01SEP04A	42*	29OCT04	29OCT04A		100	3,311.16	3,311.16					
1203-361	Final Design of Heating/Cooling	03NOV03A	03NOV03A	229*	28FEB05	28FEB05	280	65	20,615.78	31,716.59					
1203-271	Develop/Confirm & Installation Process	03JAN05*	03JAN05*	41*	28FEB05	28FEB05	280		0.00	29,448.00					
122-011	Final design WBS 122 Thermal insulation	01JUN04A	01JUN04A	185*	28FEB05	28FEB05	280	25	10,907.90	43,631.58					
124-011	Final design WBS 124 VV supports	01JUL04A	01JUL04A	163*	28FEB05	28FEB05	280	50	11,056.58	22,113.14					
125-001	Prelim design WBS 125 local I&C	01NOV04*	03JAN05*	10	15NOV04	14JAN05	289		0.00	11,631.96					
125-011	Final design WBS 125 local I&C	16NOV04	17JAN05	22*	15FEB05	15FEB05	289		0.00	11,661.41					
1203-900	Comprehensive WBS 12 FDR			0	28FEB05	01APR05	256		0.00	0.00					
124-011.1	Lateral VV supports	18NOV04	03JAN05	65	28FEB05	01APR05	256		0.00	23,263.92					
Job:1204-VV Sys Procurements (non VVSA)-GORANSON															
122-030	SPEA VV Thermal Insulation	01APR05*	01APR05*	65	01JUL05	01JUL05	168		0.00	0.00					
122-036.9	Award VV Insulation			0	01JUL05	01JUL05	168		0.00	0.00					
122-037	VV Insulation Procurement WBS 122	05JUL05	05JUL05	89	04NOV05	04NOV05	168		0.00	109,262.90					
122-031	Title III engr WBS 122	01MAR05	01MAR05*	177	04NOV05	04NOV05	168		0.00	21,952.83					
123-030	SPEA VV Heating & Cooling	02MAY05*	02MAY05*	65	02AUG05	02AUG05	171		0.00	0.00					
123-036.9	Award VV Heating/Cooling Distribution			0	02AUG05	02AUG05	171		0.00	0.00					
123-037	VV Heating/Cooling Distr Procurement WBS 123	03AUG05	03AUG05	65	02NOV05	01NOV05	171		0.00	318,062.40					
123-041	VV Heating/Cooling Fab/Assy WBS 123	05DEC05	14DEC05*	40	06FEB06	15FEB06	143		0.00	14,887.44					
123-031	Title III engr WBS 123	25APR05	25APR05	135	02NOV05	01NOV05	171		0.00	8,411.76					
124-030	SPEA VV Supports	03OCT05*	03OCT05*	69	11JAN06	17JAN06	187		0.00	0.00					
124-036.9	Award VV Supports			0	11JAN06	17JAN06	187		0.00	0.00					
124-037	VV Supports Procurement WBS 124	12JAN06	18JAN06	100	01JUN06	07JUN06	187		0.00	31,089.00					
124-041	VV Supports Fab/assy WBS 124	10OCT06	03OCT06	20	06NOV06	30OCT06	105		0.00	699.30					
124-031	Title III engr WBS 124	03OCT05	03OCT05*	165	01JUN06	01JUN06	209		0.00	9,176.00					
125-015	Title III design Local I&C	01SEP05*	01SEP05*	61	29NOV05	28NOV05	154		0.00	2,650.32					
125-037	Procurement Local I&C	02SEP05*	02SEP05*	60	29NOV05	28NOV05	154		0.00	3,179.16					



Activity ID	Activity Description	Baseline Start	Forecast Start	Orig Dur	Baseline Finish	Forecast Finish	Total Float	PCTC	Earned value cost (BCWP)	Budget	ETC ADD'L COST	FY05	FY06	FY07	FY08
Job: 1206 - VV Field Weld Joint R&D-DUDEK															
Vessel Weld Joint R&D															
1202-848	Bid,eval,award full size test sample *ECP6*	29APR04A	29APR04A	189*	01DEC04	28JAN05	1,062	LOE	1,474.96	1,640.67					
1202-851	vendor fab & deliver full size sample *ECP6*	02DEC04	31JAN05	120	23MAY05	15JUL05	1,062		0.00	175,299.90					
1202-854	Instrument sample *ECP6*	24MAY05	18JUL05	11	07JUN05	01AUG05	1,062		0.00	5,986.50					
1202-857	Perform welds on sample *ECP6*	08JUN05	02AUG05	5	14JUN05	08AUG05	1,062		0.00	8,707.20					
1202-860	Measure Results *ECP6*	15JUN05	09AUG05	6	22JUN05	16AUG05	1,062		0.00	4,019.76					
1202-863	Report Results *ECP6*	23JUN05	17AUG05	5	29JUN05	23AUG05	1,062		0.00	4,019.76					
1206-100	Prep Sample	01NOV04*	01NOV04A	56*	12NOV04	24JAN05	1,213	50	1,306.08	2,612.16					
1206-110	Weld	15NOV04	01NOV04A	56*	19NOV04	24JAN05	1,213	50	318.20	636.40					
1206-115	Analyze	22NOV04	01NOV04A	10	07DEC04	30NOV04A		100	6,715.60	6,715.60					
Job: 1250 - Vacuum Vessel Fabrication-VIOLA															
Start Up/Engineering															
VVSA-001	Process Order		24SEP04A	81*		21JAN05	1,214	40	0.00	0.00					
VVSA-011	Sect 5.1 Segmentation Scheme		04NOV04A	5		19NOV04A		100	104,175.00	104,175.00					
VVSA-021	Sect 5.1.2 Fiducials		29NOV04A	37*		21JAN05	1,214	5	3,819.75	76,395.00					
VVSA-031	Sect 5.1.3 Proc Outline & Asc Procedures		24SEP04A	81*		21JAN05	1,214	75	98,460.47	131,280.62					
Dies & Gages															
VVSA-041	Engineering		20SEP04A	85*		21JAN05	247	70	0.00	0.00					
VVSA-051	Procure Die Materials (4 sets)		04JAN05*	10*		17JAN05	251		0.00	215,000.00					
121-100	S005243 #1-Die Material Procured		22OCT04*	0	22OCT04	17JAN05	1,218		0.00	0.00					
VVSA-061	Machine Complete		04JAN05*	40		28FEB05	221		0.00	0.00					
VVSA-071	Deburr		06JAN05*	38		28FEB05	221		0.00	0.00					
VVSA-081	Inspection		04JAN05*	32*		16FEB05	229		0.00	239,000.00					
VVSA-091	Development Panels (9 panels)		04JAN05*	39*		25FEB05	222		0.00	0.00					
121-115	S005243 #4-Dies Manufactured		20DEC04*	0	20DEC04	25FEB05	1,189		0.00	0.00					
Fixture (2) 60 degree															
VVSA-101	Engineering		25OCT04A	55*		14JAN05	406	85	0.00	0.00					
VVSA-111	Procure Materials		17JAN05	10		28JAN05	406		0.00	0.00					
VVSA-121	Fab & Machine		31JAN05	15		18FEB05	406		0.00	0.00					
VVSA-131	Assemble		21FEB05	5		25FEB05	406		0.00	0.00					
VVSA-141	Deburr		28FEB05	4		03MAR05	406		0.00	0.00					
VVSA-151	Inspection		04MAR05	4		09MAR05	406		0.00	0.00					
Fixture (3) 120 degree															
VVSA-161	Engineering		06JAN05*	15		26JAN05	392	2	0.00	0.00					
VVSA-171	Procure Materials		19JAN05*	13		04FEB05	385		0.00	220,000.00					
121-110	S005243 #3-Fixture material procured		08OCT04*	0	08OCT04	04FEB05	1,204		0.00	0.00					
VVSA-181	Fab & Machine		07FEB05	58		27APR05	385		0.00	0.00					
VVSA-191	Assemble		28APR05	5		04MAY05	385		0.00	0.00					
VVSA-201	Deburr		05MAY05	6		12MAY05	385		0.00	0.00					
VVSA-211	Inspection		13MAY05	6		20MAY05	385		0.00	0.00					



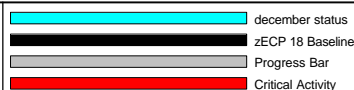
Run Date 19JAN05 13:33



0412 NCSX ECP 18 January 1 Status Sheet 2 of 40

Activity ID	Activity Description	Baseline Start	Forecast Start	Orig Dur	Baseline Finish	Forecast Finish	Total Float	PCTC	Earned value cost (BCWP)	Budget	ETC ADD'L COST	FY05	FY06	FY07	FY08
Panels & Ports															
VVSA-221	Procure Vessel Material		29OCT04A	82*		28FEB05	180	55	221,545.50	402,810.00		41=\$290k			
121-105	S005243 #2-Vessel material procured	08OCT04*		0	08OCT04	28FEB05*	1,188		0.00	0.00		Contract Milestone Payment \$290 (ref only)			
VVSA-231	Production Panels Period #1		01MAR05	41		26APR05	180		0.00	260,000.00		48=\$260k			
121-120	S005243 #5-1/3 of Vessel plates formed	28FEB05*		0	28FEB05	26APR05*	1,147		0.00	0.00		Contract Milestone Payment \$260 (ref only)			
VVSA-241	Production Panels Period #2		27APR05	28		03JUN05	254		0.00	200,000.00		48=\$200k			
121-125	S005243 #6-Second 1/3 of vsl plates formed	01APR05*		0	01APR05	03JUN05*	1,119		0.00	0.00		Contract Milestone Payment \$200 (ref only)			
VVSA-251	Production Panels Period #3		06JUN05	17		28JUN05	327		0.00	200,000.00		48=\$200k			
121-130	S005243 #7-Last 1/3 of vsl plates formed	09MAY05*		0	09MAY05	28JUN05*	1,102		0.00	0.00		Contract Milestone Payment \$200 (ref only)			
VVSA-261	Port Ext, Misc HW Period #1		11APR05*	62		05JUL05	181		0.00	0.00					
VVSA-271	Port Ext, Misc HW Period #2		30MAY05*	52		09AUG05	254		0.00	0.00					
VVSA-281	Port Ext, Misc HW Period #3		27JUN05*	52		06SEP05	325		0.00	0.00					
VVSA-291	Spacer & port Ext		17FEB05*	77		03JUN05	445		0.00	0.00					
First 120 deg segment															
VVSA-301	1st 60 deg segment		30MAR05*	31		11MAY05	180		0.00	0.00					
VVSA-311	2nd 60 deg segment		12MAY05	18		06JUN05	180		0.00	0.00					
VVSA-321	Join two pieces		07JUN05*	7		15JUN05	180		0.00	375,000.00		48=\$375k			
121-135	S005243 #8-One VVSA fabricated	19MAY05*		0	19MAY05	15JUN05*	1,111		0.00	0.00		Contract Milestone Payment \$375 (ref only)			
VVSA-331	Machine for Ports		16JUN05	15		06JUL05	180		0.00	0.00					
VVSA-341	Weld Ports		07JUL05	30		17AUG05	180		0.00	0.00					
VVSA-351	Final Machine		18AUG05	15		07SEP05	180		0.00	0.00					
VVSA-361	Vacuum Test		08SEP05	10		21SEP05	180		0.00	0.00					
VVSA-371	Cut Off Ports		22SEP05	15		12OCT05	180		0.00	0.00					
VVSA-371A	**change order -mark stud locations**		22SEP05	15		12OCT05	180		0.00	0.00	\$3,500				
VVSA-381	Pack for Shipping LI#4		13OCT05	3		17OCT05	180		0.00	0.00					
VVSA-391	Receive at PPPL		18OCT05	3		20OCT05	180		0.00	375,560.00		48=\$375.56k			
121-150	S005243 #11-Receipt/Acceptance of 1st VVSA	28SEP05*		0	28SEP05	20OCT05*	1,020		0.00	0.00		Contract Milestone Payment \$375.56 (ref only)			
Second 120 deg segment															
VVSA-401	60 deg segment		06JUN05*	20		01JUL05	254		0.00	0.00					
VVSA-411	60 deg segment		04JUL05*	7		12JUL05	254		0.00	0.00					
VVSA-421	Join two pieces		13JUL05*	5		19JUL05	254		0.00	350,000.00		48=\$350k			
121-140	S005243 #9-Second VVSA fabricated	27JUN05*		0	27JUN05	19JUL05*	1,087		0.00	0.00		Contract Milestone Payment \$350 (ref only)			
VVSA-431	Machine for Ports		20JUL05	15		09AUG05	254		0.00	0.00					
VVSA-441	Weld Ports		10AUG05	20		06SEP05	254		0.00	0.00					
VVSA-451	Final Machine		07SEP05	15		27SEP05	254		0.00	0.00					
VVSA-461	Vacuum Test		28SEP05	10		11OCT05	254		0.00	0.00					
VVSA-471	Cut Off Ports		12OCT05	8		21OCT05	254		0.00	0.00					
VVSA-471A	**change order -mark stud locations**		03OCT05	15		21OCT05	254		0.00	0.00	\$3,500				
VVSA-481	Pack for Shipping LI#4		24OCT05	4		27OCT05	254		0.00	0.00					
VVSA-491	Receive at PPPL		28OCT05	2		31OCT05	254		0.00	375,000.00		48=\$375k			

Run Date 19JAN05 13:33

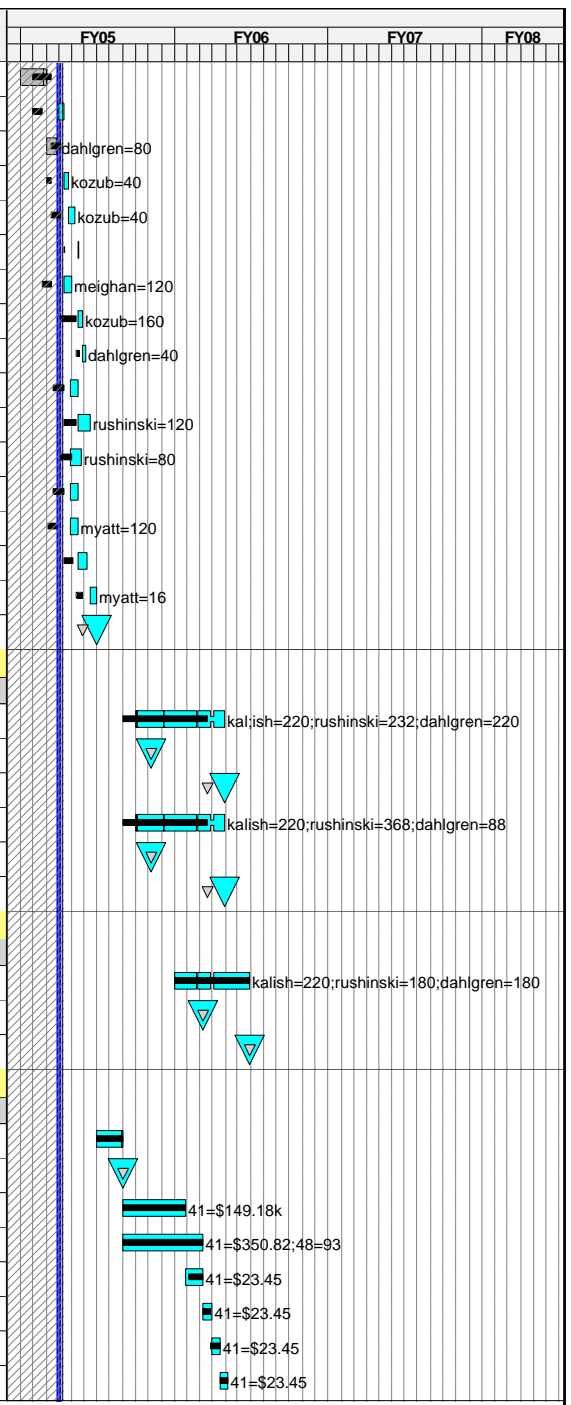


0412

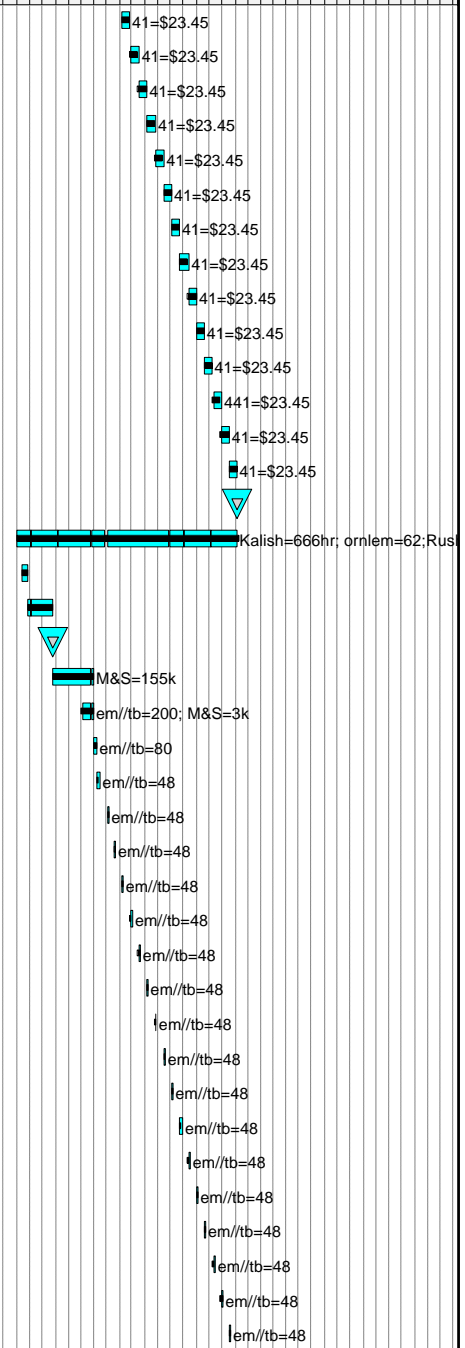
NCSX
ECP 18
January 1 Status

Sheet 3 of 40

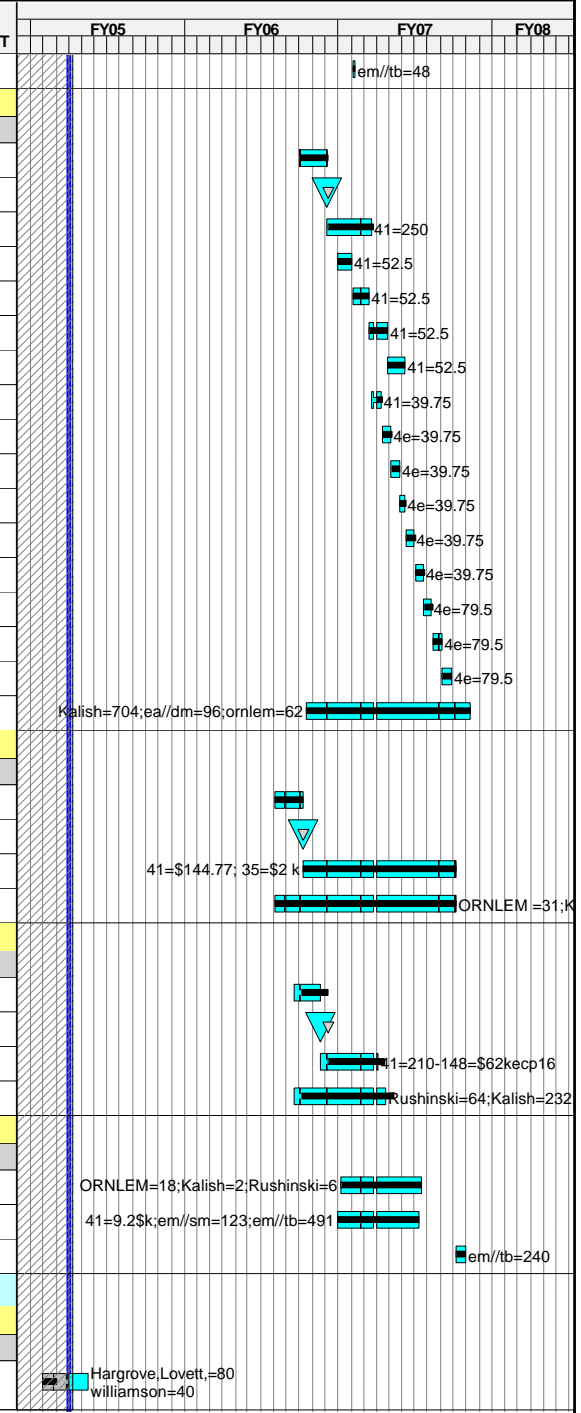
Activity ID	Activity Description	Baseline Start	Forecast Start	Orig Dur	Baseline Finish	Forecast Finish	Total Float	PCTC	Earned value cost (BCWP)	Budget	ETC ADD'L COST	FY				
												FY05	FY06	FY07	FY08	
1301R-08	Test Materials at CTD	01NOV04	01OCT04A	51	14DEC04	30NOV04A		100	0.00	0.00						
1301R-09	Order Sample Materials	01NOV04	03JAN05	6	19NOV04	10JAN05	188		0.00	0.00						
1301R-10	Check or Re-Run Analysis with new data	15DEC04	01DEC04A	10	05JAN05	31DEC04A		100	13,431.20	13,431.20						
1301R-11	Design Test Fixtures	01DEC04*	11JAN05*	10	14DEC04	24JAN05	188		0.00	6,715.60						
1301R-12	Build Test Fixture	15DEC04	25JAN05	10	05JAN05	07FEB05	188		0.00	6,715.60						
1301R-13	Update Cost and Schedule	13JAN05*	15FEB05	0	12JAN05	14FEB05	186		0.00	0.00						
1301R-14	Build Samples	22NOV04	11JAN05	14	14DEC04	28JAN05	194		0.00	13,060.80						
1301R-15	Cryo Test for Coil Sample	06JAN05	14FEB05*	9	09FEB05	24FEB05	184		0.00	26,862.40						
1301R-16	Evaluate Samples	10FEB05	25FEB05	5	16FEB05	03MAR05	184		0.00	6,715.60						
1301R-21	Pusher Design Analysis	16DEC04*	26JAN05*	15	13JAN05	15FEB05	166		0.00	0.00						
1301R-34	Final Design Coil Windings	14JAN05*	16FEB05*	19	09FEB05	14MAR05	166		0.00	20,146.80						
1301R-36	Final Design Leads	04JAN05*	26JAN05*	19	28JAN05	21FEB05	181		0.00	13,431.20						
1301R-37	Prepare Coil Spec	16DEC04*	26JAN05*	14	12JAN05	14FEB05	170		0.00	0.00						
1301R-38	Analysis, Final with Leads Terminals & Supports	06DEC04*	26JAN05	14	23DEC04	14FEB05	186		0.00	19,110.00						
1301R-31	Review and Approve Coil Spec	13JAN05*	15FEB05*	16	03FEB05	08MAR05	170		0.00	0.00						
1301R-35	Prepare for TF FDR	10FEB05*	15MAR05*	11	24FEB05	29MAR05	166		0.00	2,548.00						
131-012	WBS 13 TF FDR			0	24FEB05*	29MAR05*	165		0.00	0.00						
Job: 1302 - PF and CS Design -KALISH																
1302-PF	PF Design	01JUN05*	01JUL05*	140	19DEC05	26JAN06	229		0.00	114,036.87						
141-012	PF 1-6 PDR			0	08AUG05*	08AUG05*	294		0.00	0.00						
141-013	PF 1-6 FDR			0	19DEC05	26JAN06	229		0.00	0.00						
1302-CSS	Center Stack Support Design	01JUN05*	01JUL05*	140	19DEC05	26JAN06	180		0.00	114,715.66						
1301-136	CS Support PDR			0	08AUG05*	08AUG05*	1,048		0.00	0.00						
1301-137	CS Support FDR			0	19DEC05	26JAN06	180		0.00	0.00						
Job: 1303 - Trim coil Design-KALISH																
1303-TRIM	Trim Coil Design	03OCT05*	03OCT05*	119	28MAR06	28MAR06	208		0.00	99,307.60						
1303-136	Trim Coil PDR			0	08DEC05*	08DEC05*	963		0.00	0.00						
1303-137	Trim Coil FDR			0	28MAR06	28MAR06	208		0.00	0.00						
Job: 1351 - TF Coil Procurement-KALISH																
TF Coil Fabrication																
131-034	Bid & Evaluate TF Coils	30MAR05	30MAR05*	45	01JUN05	01JUN05	165		0.00	0.00						
131-035	TF Coils Awarded			0	01JUN05*	01JUN05*	165		0.00	0.00						
1351-100	Tooling	02JUN05	02JUN05	106	27OCT05	27OCT05	175		0.00	195,334.32						
1351-105	materials & leads	02JUN05	02JUN05	135	07DEC05	07DEC05	176		0.00	545,245.96						
1351-110	Wind,wrap,VPI & test TF #1	03NOV05	28OCT05	30	07DEC05	08DEC05	175		0.00	23,450.00						
1351-115	Wind,wrap,VPI & test TF #2	08DEC05	09DEC05	14	27DEC05	28DEC05	175		0.00	23,450.00						
1351-120	Wind,wrap,VPI & test TF #3	28DEC05	29DEC05	14	16JAN06	17JAN06	175		0.00	23,450.00						
1351-125	Wind,wrap,VPI & test TF #4	17JAN06	18JAN06	14	03FEB06	06FEB06	175		0.00	23,450.00						



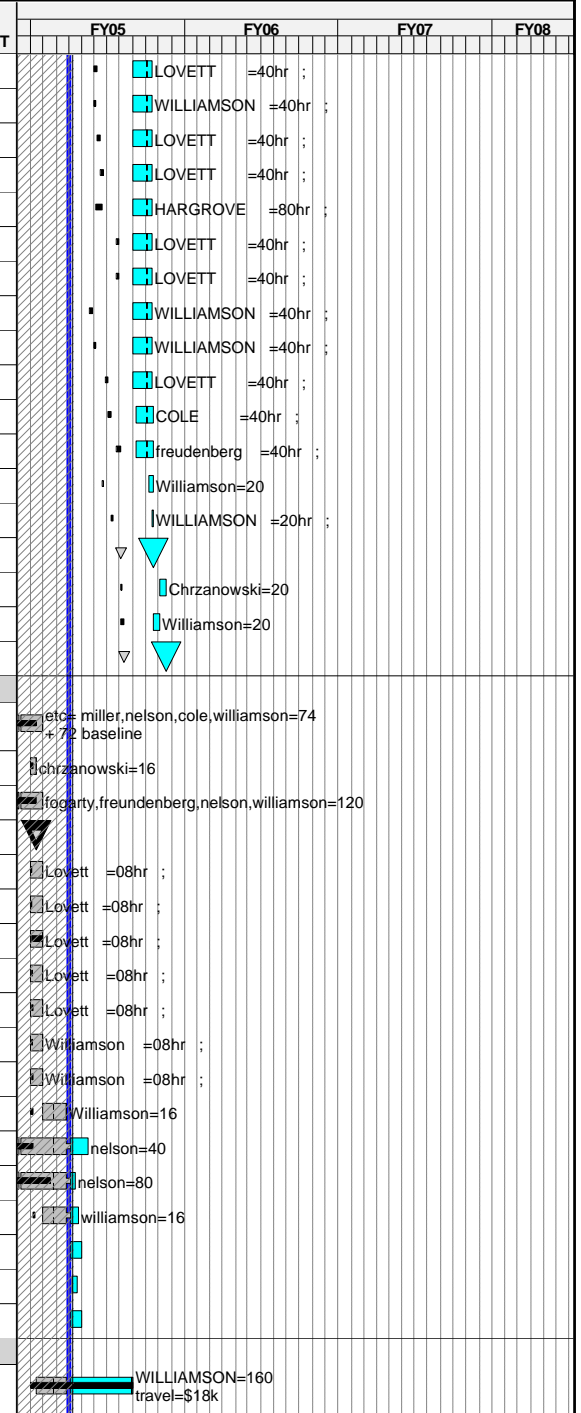
Activity ID	Activity Description	Baseline Start	Forecast Start	Orig Dur	Baseline Finish	Forecast Finish	Total Float	PCTC	Earned value cost (BCWP)	Budget	ETC ADD'L COST	FY			
												FY05	FY06	FY07	FY08
1351-130	Wind_wrap,VPI & test TF # 5	06FEB06	07FEB06	14	23FEB06	24FEB06	175		0.00	23,450.00					
1351-135	Wind_wrap,VPI & test TF # 6	24FEB06	27FEB06	14	15MAR06	16MAR06	175		0.00	23,450.00					
1351-140	Wind_wrap,VPI & test TF # 7	16MAR06	17MAR06	14	04APR06	05APR06	175		0.00	23,450.00					
1351-145	Wind_wrap,VPI & test TF # 8	05APR06	06APR06	14	24APR06	25APR06	175		0.00	23,450.00					
1351-150	Wind_wrap,VPI & test TF # 9	25APR06	26APR06	14	12MAY06	15MAY06	175		0.00	23,450.00					
1351-155	Wind_wrap,VPI & test TF # 10	15MAY06	16MAY06	14	01JUN06	02JUN06	175		0.00	23,450.00					
1351-160	Wind_wrap,VPI & test TF # 11	02JUN06	05JUN06	14	21JUN06	22JUN06	175		0.00	23,450.00					
1351-165	Wind_wrap,VPI & test TF # 12	22JUN06	23JUN06	14	11JUL06	12JUL06	175		0.00	23,450.00					
1351-170	Wind_wrap,VPI & test TF # 13	12JUL06	13JUL06	14	31JUL06	01AUG06	175		0.00	23,450.00					
1351-175	Wind_wrap,VPI & test TF # 14	01AUG06	02AUG06	14	18AUG06	21AUG06	175		0.00	23,450.00					
1351-180	Wind_wrap,VPI & test TF # 15	21AUG06	22AUG06	14	07SEP06	08SEP06	175		0.00	23,450.00					
1351-185	Wind_wrap,VPI & test TF # 16	08SEP06	11SEP06	14	27SEP06	28SEP06	175		0.00	23,450.00					
1351-190	Wind_wrap,VPI & test TF # 17	28SEP06	29SEP06	14	17OCT06	18OCT06	175		0.00	23,450.00					
1351-195	Wind_wrap,VPI & test TF # 18	18OCT06	19OCT06	14	06NOV06	07NOV06	175		0.00	23,450.00					
131-038	All TF Coils Delivered			0	06NOV06	07NOV06	175		0.00	0.00					
131-031	Title III engr	02JUN05*	02JUN05*	361	08NOV06	07NOV06	734		0.00	139,523.32					
1351-85A	Prep Spec and Req for TF castings	15JUN05	15JUN05	10	28JUN05	28JUN05	251		0.00	0.00					
1351-85B	Bid & Award TF Castings	29JUN05	29JUN05	40	24AUG05	24AUG05	251		0.00	0.00					
1351-85C	Award TF Castings			0	24AUG05*	24AUG05*	251		0.00	0.00					
1351-85D	Vendor Fab TF Castings	25AUG05	25AUG05	66	28NOV05	28NOV05	251		0.00	195,617.05					
1301-86	Fab/Assemble Fixture	01NOV05	03NOV05	19	30NOV05	01DEC05	243		0.00	19,869.00					
1301-88	Setup Wedge Casting Fixture	01DEC05	02DEC05	5	07DEC05	08DEC05	243		0.00	6,489.60					
1351-110A	Assemble TF to Wedge Casting TF#1	08DEC05	09DEC05	3	12DEC05	13DEC05	243		0.00	3,893.76					
1351-115A	Assemble TF to Wedge Casting TF#2	03JAN06	03JAN06	3	05JAN06	05JAN06	334		0.00	3,893.76					
1351-120A	Assemble TF to Wedge Casting TF#3	17JAN06	18JAN06	3	19JAN06	20JAN06	326		0.00	3,893.76					
1351-125A	Assemble TF to Wedge Casting TF#4	06FEB06	07FEB06	3	08FEB06	09FEB06	316		0.00	3,893.76					
1351-130A	Assemble TF to Wedge Casting TF#5	24FEB06	27FEB06	3	28FEB06	01MAR06	305		0.00	3,893.76					
1351-135A	Assemble TF to Wedge Casting TF#6	16MAR06	17MAR06	3	20MAR06	21MAR06	294		0.00	3,893.76					
1351-140A	Assemble TF to Wedge Casting TF#7	05APR06	06APR06	3	07APR06	10APR06	284		0.00	3,893.76					
1351-145A	Assemble TF to Wedge Casting TF#8	25APR06	26APR06	3	27APR06	28APR06	273		0.00	3,893.76					
1351-150A	Assemble TF to Wedge Casting TF#9	15MAY06	16MAY06	3	17MAY06	18MAY06	262		0.00	3,893.76					
1351-155A	Assemble TF to Wedge Casting TF#10	02JUN06	05JUN06	3	06JUN06	07JUN06	253		0.00	3,893.76					
1351-160A	Assemble TF to Wedge Casting TF#11	22JUN06	23JUN06	3	26JUN06	27JUN06	242		0.00	3,893.76					
1351-165A	Assemble TF to Wedge Casting TF#12	12JUL06	13JUL06	3	14JUL06	17JUL06	232		0.00	3,893.76					
1351-170A	Assemble TF to Wedge Casting TF#13	01AUG06	02AUG06	3	03AUG06	04AUG06	223		0.00	3,893.76					
1351-175A	Assemble TF to Wedge Casting TF#14	21AUG06	22AUG06	3	23AUG06	24AUG06	212		0.00	3,893.76					
1351-180A	Assemble TF to Wedge Casting TF#15	08SEP06	11SEP06	3	12SEP06	13SEP06	201		0.00	3,893.76					
1351-185A	Assemble TF to Wedge Casting TF#16	28SEP06	29SEP06	3	02OCT06	03OCT06	191		0.00	4,023.68					
1351-190A	Assemble TF to Wedge Casting TF#17	18OCT06	19OCT06	3	20OCT06	23OCT06	180		0.00	4,088.64					



Activity ID	Activity Description	Baseline Start	Forecast Start	Orig Dur	Baseline Finish	Forecast Finish	Total Float	PCTC	Earned value cost (BCWP)	Budget	ETC ADD'L COST	FY05	FY06	FY07	FY08
1351-195A	Assemble TF to Wedge Casting TF#18	07NOV06	08NOV06	3	09NOV06	10NOV06	169		0.00	4,088.64					
Job: 1352 - PF Coil Procurement-KALISH															
PF Coil Fabrication															
141-035	Bid & Award PF Coils	05JUL06*	03JUL06*	45	06SEP06	05SEP06	119		0.00	0.00					
141-036	PF Coils Awarded			0	06SEP06	05SEP06	119		0.00	0.00					
1352-100	Material & leads	07SEP06	06SEP06	75	22DEC06	21DEC06	119		0.00	329,150.00					
1352-110	Tooling for PF 4	02OCT06*	02OCT06*	25	03NOV06	03NOV06	136		0.00	69,562.50					
1352-115	Tooling for PF 5	06NOV06	06NOV06	25	12DEC06	12DEC06	136		0.00	69,562.50					
1352-120	Tooling for PF 6	13DEC06	13DEC06	25	24JAN07	24JAN07	151		0.00	69,562.50					
1352-105	Tooling for PF 1,2 and 3	25JAN07	25JAN07	30	07MAR07	07MAR07	151		0.00	69,562.50					
1352-140	Fabricate/Dlvr PF 4 lower	02JAN07	22DEC06	10	15JAN07	12JAN07	119		0.00	52,668.75					
1352-145	Fabricate/Dlvr PF 5 lower	16JAN07	15JAN07	15	05FEB07	02FEB07	119		0.00	43,009.50					
1352-150	Fabricate/Dlvr PF 6 lower	06FEB07	05FEB07	15	26FEB07	23FEB07	119		0.00	43,009.50					
1352-155	Fabricate/Dlvr PF 4 upper	27FEB07	26FEB07	10	12MAR07	09MAR07	119		0.00	43,009.50					
1352-160	Fabricate/Dlvr PF 5 upper	13MAR07	12MAR07	15	02APR07	30MAR07	119		0.00	43,009.50					
1352-165	Fabricate/Dlvr PF 6 upper	03APR07	02APR07	15	23APR07	20APR07	119		0.00	43,009.50					
1352-125	Fabricate/Dlvr PF 1 upper & lower	24APR07	23APR07	15	14MAY07	11MAY07	119		0.00	86,019.00					
1352-130	Fabricate/Dlvr PF 2 upper & lower	15MAY07	14MAY07	15	05JUN07	04JUN07	119		0.00	86,019.00					
1352-135	Fabricate/Dlvr PF 3 upper & lower	06JUN07	05JUN07	15	26JUN07	25JUN07	119		0.00	86,019.00					
141-031	Title III engr WBS 132	17JUL06*	17JUL06*	268	09AUG07	09AUG07	547		0.00	151,940.41					
Job: 1353 - CS Structure Procurement-KALISH															
CS Support Structure															
163-035	Bid & Award CS Support Struct	04MAY06	05MAY06	45	10JUL06	10JUL06	110		0.00	0.00					
163-036.9	Award CS Support Structure			0	10JUL06*	10JUL06*	110		0.00	0.00					
163-037	CS Support Structure Procurement/Fab	11JUL06*	11JUL06*	249	09JUL07	09JUL07	110		0.00	194,263.41					
163-015	Title III design CS sprt struc	04MAY06	05MAY06	294	09JUL07	09JUL07	570		0.00	63,581.97					
Job: 1354 - Trim Coil Procurement-KALISH															
Trim Coils															
184-035	Bid & Award Ext Trim Coils	06JUL06	19JUN06	45	07SEP06	21AUG06	151		0.00	0.00					
184-036	Award External Trim Coils			0	07SEP06*	21AUG06*	151		0.00	0.00					
184-037	External Trim Coil Procurement/Fab*ecp16	08SEP06	22AUG06	87	18JAN07	02JAN07	151		0.00	81,451.61					
184-015	Title III WBS 133 Rxt Trim Coils	06JUL06	19JUN06	147	08FEB07	23JAN07	687		0.00	63,627.23					
Job: 1355 - WBS 13 I&C Proc & Coil Assy-KALISH															
TF/PF Local I&C															
133-015	Title III WBS 134 Conv Coil I&C	09OCT06*	09OCT06*	130	18APR07	18APR07	626		0.00	3,842.74					
133-037	Conv Coil I&C WBS 134 Proc & Install	02OCT06*	02OCT06*	130	11APR07	11APR07	173		0.00	68,349.03					
1355-100	CS and PF 1-3 Pre-Assy incl coil I&C procurement	10JUL07	10JUL07	15	30JUL07	30JUL07	110		0.00	20,443.20					
14 - Modular Coils															
Job: 1403 - Modular Coil Final Design-WILLIAMSON															
Coil-to-coil Interface Design															
1403-11.1	Compl assembly / interface drawings for ICDs	01NOV04*	01NOV04A	69*	30NOV04	15FEB05	134	50	14,724.00	29,448.00					

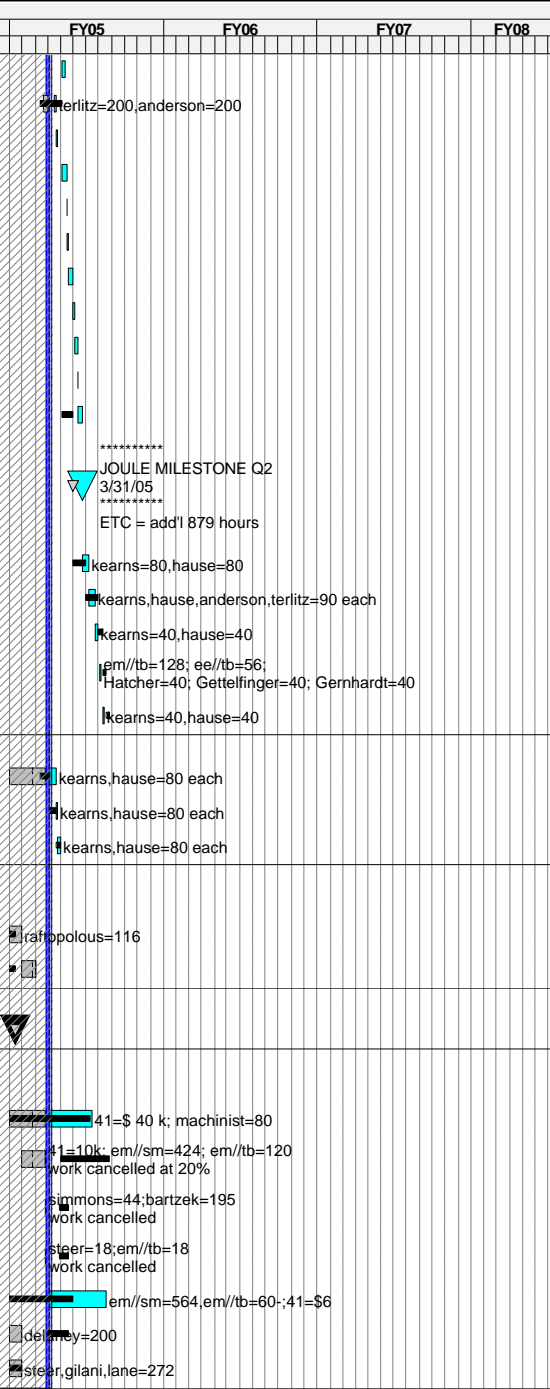


Activity ID	Activity Description	Baseline Start	Forecast Start	Orig Dur	Baseline Finish	Forecast Finish	Total Float	PCTC	Earned value cost (BCWP)	Budget	ETC ADD'L COST	FY									
												FY05	FY06	FY07	FY08						
1403-401	Leads & crossover Dwgs (10)-Type B	01MAR05*	01JUN05*	31	07MAR05	14JUL05	226		0.00	5,889.60											
1403-400	Winding pack assy Dwgs (8)-Type B	28FEB05*	01JUN05*	31	04MAR05	14JUL05	226		0.00	5,889.60											
1403-421	Lead ends & closure-Type B	08MAR05	01JUN05*	31	14MAR05	14JUL05	226		0.00	5,889.60											
1403-422	Terminal assembly-Type B	15MAR05	01JUN05*	31	21MAR05	14JUL05	226		0.00	5,889.60											
1403-404	Chill Plate Dwgs (66)-TypeB	07MAR05*	01JUN05*	31	18MAR05	14JUL05	226		0.00	11,779.20											
1403-424	VPI mold assembly0-Type B	21APR05*	01JUN05*	31	28APR05	14JUL05	226		0.00	5,889.60											
1403-403	Clamp Dwgs (5)-Type B	21APR05*	01JUN05*	31	28APR05	14JUL05	226		0.00	5,889.60											
1403-406	Cooling, Electr Schematic Dwgs (1)-Type B	18FEB05*	01JUN05*	31	24FEB05	14JUL05	226		0.00	5,889.60											
1403-408	I&C Dwgs (1) -Type B	28FEB05*	01JUN05*	31	04MAR05	14JUL05	226		0.00	5,889.60											
1403-423	Top level coil assembly-Type B	29MAR05*	01JUN05*	31	04APR05	14JUL05	226		0.00	5,889.60											
1403-58B	Check and promote models / drawings -Type B	05APR05*	08JUN05*	31*	11APR05	21JUL05	221		0.00	5,889.60											
1403-80	Update design basis doc & cost sched est	21APR05*	08JUN05*	31*	04MAY05	21JUL05	221		0.00	5,889.60											
1403-72.06	Update build-to spec	21MAR05*	08JUL05*	10*	23MAR05	21JUL05	221		0.00	3,357.80											
1403-81	Prepare FDR doc	11APR05*	15JUL05*	5*	13APR05	21JUL05	221		0.00	2,944.80											
1403-72	Final Design Review Production Type B			0	04MAY05*	21JUL05*	221		0.00	0.00											
1403-72.05	Update MIT/QA Plans for Type C Winding Fab	04MAY05*	05AUG05*	10*	06MAY05	18AUG05	211		0.00	3,357.80											
1403-72.07	Resolve FDR comments	05MAY05	22JUL05*	10*	09MAY05	04AUG05	221		0.00	3,357.80											
1403-72.1	Fab Readiness Review - Production Type B			0	09MAY05*	18AUG05*	211		0.00	0.00											
Twisted Racetrack Design (Williamson)																					
1406-102	Review/Approve Clamp& Chill Plate Dwgs	01JUN04A	01JUN04A	107*	13OCT04	29OCT04A		100	22,231.55	22,231.55											
1406-103.0	Prep MIT plan	01OCT04*	01OCT04A	0*	06OCT04	15OCT04A		100	2,686.24	2,686.24											
1406-103.1	Prepare for Twisted Racetrack FDR	01SEP04A	01SEP04A	42*	15OCT04	29OCT04A		100	16,555.80	16,555.80											
1406-103.2	Twisted Racetrack FDR			0	15OCT04*	15OCT04A		100	0.00	0.00											
1406-150	Winding pack assy	01OCT04*	01OCT04A	0*	04OCT04	29OCT04A		100	1,177.92	1,177.92											
1406-151	Lead ends & closure	01OCT04*	01OCT04A	21*	04OCT04	29OCT04A		100	1,177.92	1,177.92											
1406-152	Terminal Assy	04OCT04*	01OCT04A	21*	29OCT04	29OCT04A		100	1,177.92	1,177.92											
1406-153	VPI mold assy	05OCT04*	01OCT04A	21*	05OCT04	29OCT04A		100	1,177.92	1,177.92											
1406-154	Clamp assy	06OCT04*	01OCT04A	21*	06OCT04	29OCT04A		100	1,177.92	1,177.92											
1406-155	Cooling ,electr schematics	05OCT04*	01OCT04A	21*	05OCT04	29OCT04A		100	1,177.92	1,177.92											
1406-156	I&C dwgs	06OCT04*	01OCT04A	21*	06OCT04	29OCT04A		100	1,177.92	1,177.92											
1406-157	Build to specification	01OCT04*	01NOV04A	67*	06OCT04	23DEC04A		100	2,355.84	2,355.84											
1406-104	Prepare Draft of Coil Test Plan	01OCT03A	01OCT03A	338*	06OCT04	14FEB05	186	75	4,005.59	5,340.78											
1406-110	Finalize, Approve coil test plan	01DEC03A	01DEC03A	276*	15NOV04	14JAN05	207	75	7,991.59	10,655.45											
1406-103.3	Resolve TRC FDR Issues	07OCT04*	01NOV04A	52*	12OCT04	24JAN05	1,186	75	1,766.88	2,355.84											
1403-062	Trial winding analysis & shim rqmnts		04JAN05*	20*		31JAN05	1,181		0.00	0.00											
1403-065	Cooling redesign and analysis		10JAN05*	8*		19JAN05	1,189		0.00	0.00											
1403-066	Chill plate modifications Dwgs		04JAN05	20*		31JAN05	136		0.00	0.00	\$44,000										
TITLE2TRC	Titel III Design-TRC FAB	01OCT04*	15OCT04A	153*	31MAY05	31MAY05	1,096	LOE	17,220.52	54,842.40											

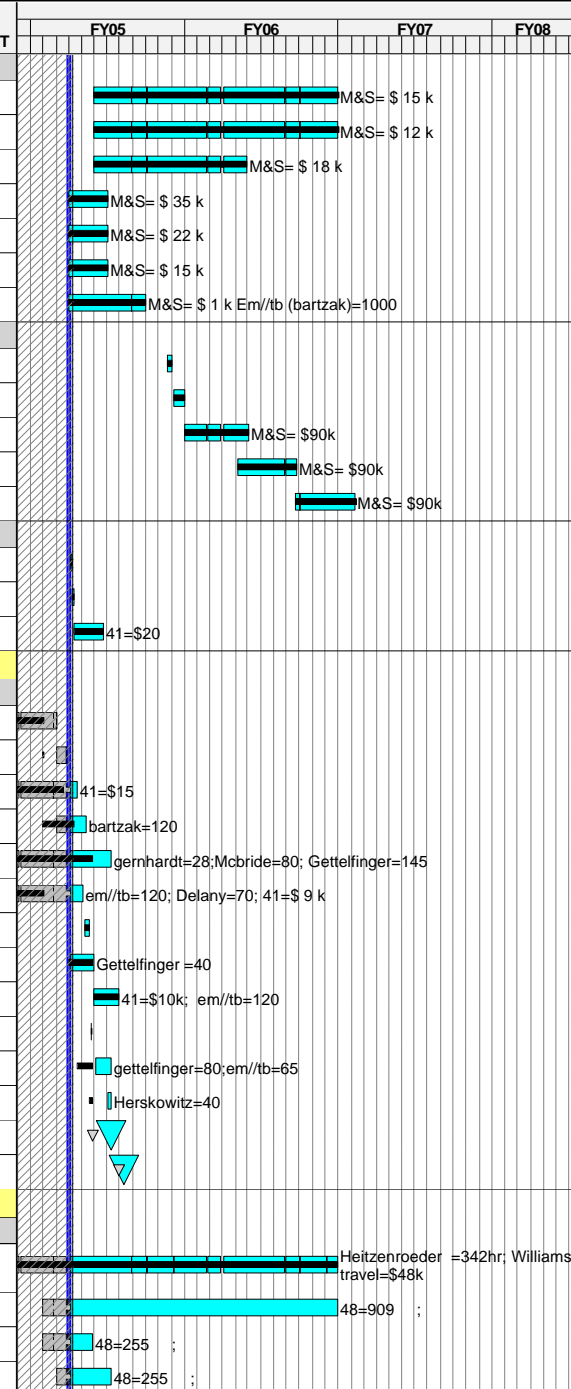


Activity ID	Activity Description	Baseline Start	Forecast Start	Orig Dur	Baseline Finish	Forecast Finish	Total Float	PCTC	Earned value cost (BCWP)	Budget	ETC ADD'L COST	FY05	FY06	FY07	FY08
Job:1404-MCWF R&D & 1st Prod Casting-HEITZENROED															
EIO Subcontract (S04341F)															
PPC-1	Engr & Flow Solidification	01SEP04A	01SEP04A	42*	15OCT04	15OCT04A		100	21,570.00	21,570.00					
PPC-2	Lawton mold Assy	22SEP04A	22SEP04A	69*	30NOV04	23DEC04A		100	227,630.00	227,630.00					
PPC-3	Materials	01OCT04*	01NOV04A	41*	29OCT04	23DEC04A		100	39,150.00	39,150.00					
PPC-4	Build Pattern & Pour Casting	01DEC04*	01DEC04A	0*	31DEC04	31DEC04A		100	16,610.00	16,610.00					
PPC-5	Clean/Inspect Heat treat Casting	04JAN05*	01DEC04A	4	07JAN05	31DEC04A		100	0.00	0.00					
PPC-5C	contract resolution setaside	01OCT04*	01DEC04A	4*	07JAN05	31DEC04A		100	30,000.00	30,000.00	\$155,000				
PPC-6	Oversight/Reporting	04AUG04A	04AUG04A	103*	31DEC04	31DEC04A		100	27,040.00	27,040.00					
MCWF Fracture Analysis															
1404-FR3	Test Lot 1 specimens - 17 pcs. At \$260	20AUG04A	20AUG04A	50*	15OCT04	29OCT04A		100	5,844.57	5,844.57					
1404-FR4	Rough machine Lot 2 (11 specimens) at PPPL	16AUG04A	16AUG04A	54*	01OCT04	29OCT04A		100	856.56	856.56					
1404-FR5	Machine Lot 2 specimens to ASTM spec. (Crystal E	04OCT04*	01OCT04A	10	15OCT04	29OCT04A		100	1,041.75	1,041.75					
1404-FR6	Test Lot 2 specimens @NHMFL 11 pcs.	18OCT04	01OCT04A	20	12NOV04	29OCT04A		100	3,972.54	3,972.54					
1404-FR7	Engineering coordination	15JUL04A	15JUL04A	76*	29OCT04	29OCT04A		100	6,507.47	6,507.47					
Job: 1406 - Mod. Coil Winding R&D-CHRZANOWSKI															
Oversight & Supervision															
1406-000.2	Supervision & Oversight	01OCT04*	01OCT04A	58*	30NOV04	23DEC04A		100	39,362.76	39,362.76					
Twisted Racetrack Hardware Fabrication (Chrzano)															
1406-016.5	PPPL Fabricate TRC Cladding	01SEP04A	01SEP04A	79*	14OCT04	23DEC04A		100	3,250.09	3,250.09					
1406-016.A	fab trc lead components	01AUG04A	01AUG04A	110*	15OCT04	14JAN05	129	90	10,117.11	11,241.23					
1406-016.B	write procedures, doc mit/qa plan	09JUN04A	09JUN04A	138*	14OCT04	23DEC04A		100	0.00	0.00					
Testing															
1406-58	fab MC lead braze specimens	01AUG04A	01AUG04A	5	07OCT04	29OCT04A		100	3,108.09	3,108.09					
1406-100	Single conductor torsion test	20OCT04*	01OCT04A	41*	19NOV04	30NOV04A		100	6,699.60	6,699.60					
1406-200	Transverse compression at LN2	01NOV04*	01OCT04A	58*	05NOV04	23DEC04A		100	2,679.84	2,679.84					
1406-210	Dogbone test @RT	01NOV04*	01OCT04A	5	05NOV04	29OCT04A		100	1,339.92	1,339.92					
1406-215	4 turn racetrack fatigue tests	22NOV04*	10JAN05*	5*	05JAN05	14JAN05	152		0.00	29,478.24					
1406-033	Prepare Test report	04JAN05*	17JAN05*	4*	20JAN05	20JAN05	152		0.00	0.00					
Job: 1410 MC Twisted Racetrack Fabr-CHRZANOWSKI															
Twisted Racetrack Hardware Fabrication (Chrzano)															
1406-016.0	Oversight & Supervision	01NOV04*	01NOV04A	20	29APR05	29APR05	1,117	LOE	64,918.94	212,153.40					
1406-016.6	PPPL Fabricate TRC Chill plates	05NOV04*	01FEB05	20	11JAN05	28FEB05	136		0.00	2,950.95					
1406-016.7	PPPL Fabricate TRC Tubing	05NOV04*	01FEB05	20	11JAN05	28FEB05	136		0.00	3,459.80					
1406-016.1	Inspect & Measure Casting	11OCT04*	01OCT04A	20	05NOV04	29OCT04A		100	0.00	0.00					
1406-016.2	Install Studs	01NOV04*	01NOV04A	5	05NOV04	30NOV04A		100	3,182.00	3,182.00					
1406-106.3	Winding Trials (wo/ cladding)	08NOV04	01NOV04A	37*	19NOV04	23DEC04A		100	12,728.00	12,728.00					
1406-017	Instl cladding(station 2) Side A	22NOV04	01DEC04A	23*	14DEC04	23DEC04A		100	6,364.00	6,364.00					
1406-017B	Instl cladding(station 2) Side B		24JAN05*	10*		03FEB05	153		0.00	6,364.00					
1403-017.D	Wind layer #1 9 turns Side A		24JAN05	10		03FEB05	156		0.00	4,136.60					

Activity ID	Activity Description	Baseline Start	Forecast Start	Orig Dur	Baseline Finish	Forecast Finish	Total Float	PCTC	Earned value cost (BCWP)	Budget	ETC ADD'L COST	Fiscal Year					
												FY05	FY06	FY07	FY08		
1403-017.E	Position & Prep 2nd coil lead set Side A		04FEB05	5		09FEB05	156		0.00	2,545.60							
1406-017.1	Instl grnd wrap Side A	15DEC04	20DEC04A	25*	02FEB05	17JAN05	156	5	517.08	10,341.50							
1406-017.C	Position & prep 1st coil lead set Side A		18JAN05	5		22JAN05	156		0.00	2,545.60							
1406-017.F	Position Ground wrap onto winding form Side B		04FEB05	8		12FEB05	153		0.00	3,818.40							
1406-017.G	Reposition Coil Side B		14FEB05	1		14FEB05	153		0.00	1,272.80							
1406-017.H	Position & prep 1st coil lead set Side B		15FEB05	4		18FEB05	153		0.00	1,591.00							
1406-017.J	Wind layer #1 9 turns Side B		19FEB05	9		01MAR05	153		0.00	2,386.50							
1406-017.K	Position & Prep 2nd coil lead set Side B		02MAR05	4		05MAR05	153		0.00	1,591.00							
1406-017.L	Complete Groundwrap Installation Side B		07MAR05	4		10MAR05	153		0.00	1,591.00							
1406-017.M	Install Outer Diagnostic Loops		11MAR05	2		12MAR05	153		0.00	1,272.80							
1406-017.2	Instl chill plates & tubing (station 2)	03FEB05	14MAR05	10	02MAR05	24MAR05	153		0.00	11,455.20							
1406-017.3	Cmplt Assy of twisted racetrack (Joule milestone)			0	02MAR05	24MAR05	1,391		0.00	0.00	\$69,924						
1406-018	Pre-VPI Press test & Apply bag mold (station 4)	03MAR05	25MAR05	11	30MAR05	06APR05	160		0.00	12,728.00							
1406-019	VPI TRC in autoclave	31MAR05	07APR05	12	27APR05	20APR05	160		0.00	28,638.00							
1406-019.1	Instl permanent clamps	28APR05	21APR05	8	11MAY05	29APR05	160		0.00	12,728.00							
1406-021	Test Coil	12MAY05	02MAY05	5	18MAY05	06MAY05	132		0.00	32,284.72							
1406-023	Dissect Coil	19MAY05	09MAY05	5	25MAY05	13MAY05	132		0.00	6,364.00							
Straight Tee Specimen																	
1406-ST1	Fab Straight Tee Specimen	13DEC04*	01OCT04A	68*	03JAN05	17JAN05	180	75	9,546.00	12,728.00							
1406-ST2	Straight Tee VPI Prep	04JAN05	18JAN05	5	17JAN05	24JAN05	180		0.00	12,728.00							
1406-ST3	VPI Tee Specimen	18JAN05	25JAN05	5	31JAN05	31JAN05	180		0.00	12,728.00							
Job: 1407 -Mod Coil Winding Facility-CHRZANOWSKI																	
Oversight and Supervision																	
1407-002.3	Winding Facility, Tooling, Materials Oversight	01OCT04*	01OCT04A	0*	15OCT04	29OCT04A			19,475.24	19,475.24							
1407-002.1	Prep Winding Facility Ops Plan(reqd for TRT FRR)	01OCT04	01NOV04A	10	14OCT04	30NOV04A			0.00	0.00							
Remaining fixtures & tooling																	
1407-199	Winding Facility ACC Rvw stations 2&5			0	15OCT04*	15OCT04A			0.00	0.00							
Job: 1412 - Complete Winding Facilities-CHRZANOW																	
Remaining fixtures & tooling																	
1407-130.1	Misc tools & equip FY05	01OCT04*	01OCT04A	130*	12APR05	13APR05	1,129	50	16,066.80	32,133.60							
1408-999	3rd winding line conductor payout sys	01FEB05*	01NOV04A	144*	25MAY05	23DEC04A		100	69,584.16	69,584.16							
1407-100.5	Complete Fab & Instl Turning Fixt 4	28JAN05*	23DEC04A	15	17FEB05	23DEC04A		100	20,301.21	20,301.21							
1407-100.6	Complete Electr hookup turning fixtures 4	28JAN05*	23DEC04A	15	17FEB05	23DEC04A		100	3,391.02	3,391.02							
1407-110.3	Compl Fabr Winding clamp sets (300 of 400)	01OCT04*	04JAN05*	97	28FEB05	18MAY05	1,104	60	44,351.70	73,919.51							
1407-124	Fab casting to ring assy fixture station 1	03JAN05*	01OCT04A	34	17FEB05	29OCT04A		100	21,768.00	21,768.00							
1407-124.5	Electrical Installations	01OCT04*	01OCT04A	0*	29OCT04	29OCT04A		100	21,637.60	21,637.60							



Activity ID	Activity Description	Baseline Start	Forecast Start	Orig Dur	Baseline Finish	Forecast Finish	Total Float	PCTC	Earned value cost (BCWP)	Budget	ETC ADD'L COST	FY05	FY06	FY07	FY08
Other															
1408-137	Safety & Disposable supplies	01MAR05*	01MAR05*	401	03OCT06	28SEP06	145		0.00	19,912.89					
1408-138	Misc. Supplies	01MAR05*	01MAR05*	401	03OCT06	28SEP06	290		0.00	15,930.31					
1408-173	Epoxy for Shell Mold (Hysol)	01MAR05*	01MAR05*	250	28FEB06	27FEB06	157		0.00	23,220.00					
1408-183	Tubing (Chem flor and Poly)	03JAN05*	03JAN05*	65	01APR05	01APR05	163		0.00	48,615.00					
1408-184	Vulcanizing tape, felt and RTV	03JAN05*	03JAN05*	65	01APR05	01APR05	163		0.00	30,558.00					
1408-185	Valves and Fittings	03JAN05*	03JAN05*	65	01APR05	01APR05	163		0.00	20,835.00					
1408-186	Manifolds	03JAN05*	03JAN05*	127	29JUN05	29JUN05	198		0.00	80,939.00					
Clamps															
1408-131P	Clamps -Spec & Requisition	22AUG05*	22AUG05*	10	02SEP05	02SEP05	200		0.00	0.00					
1408-133P	Clamps -Bid & Award	06SEP05	05SEP05	20	03OCT05	30SEP05	200		0.00	0.00					
1408-137P	Clamps Production Type C	04OCT05	03OCT05	100	02MAR06	01MAR06	200		0.00	116,100.00					
1408-138P	Clamps Production Type A	06FEB06*	06FEB06*	100	26JUN06	26JUN06	162		0.00	116,100.00					
1408-139P	Clamps Production Type B	22JUN06*	22JUN06*	100	13NOV06	09NOV06	113		0.00	117,013.50					
Groundwrap Insulation															
1408-110	Grndwrap Insulation-Spec & Requisition	04JAN05*	04JAN05*	3	06JAN05	06JAN05	171		0.00	0.00					
1408-112	Grndwrap-Bid & Award	07JAN05	07JAN05	3	11JAN05	11JAN05	171		0.00	0.00					
1408-112.1	Grndwrap-Delivery	12JAN05	12JAN05	50	22MAR05	22MAR05	171		0.00	27,780.00					
Job: 1409 - Mod. Coil Test Stand-GETTELFINGER															
Test Stand															
1409-140	Design Closed Loop LN2 System	02AUG04A	02AUG04A	85*	01NOV04	30NOV04A		100	0.00	0.00					
1409-145	FDR closed loop LN2 syst	01NOV04*	01DEC04A	1	01NOV04	23DEC04A		100	0.00	0.00					
1409-150	Proc Matl's/pump f/closed LN2	02AUG04A	02AUG04A	111*	15DEC04	17JAN05	200	65	13,108.39	20,166.76					
1409-155	Fab/Instl Closed Loop LN2 sys	01NOV04*	01DEC04A	44*	12JAN05	09FEB05	183	50	6,530.40	13,060.80					
1409-029	Oversight/Supervision	01APR04A	01APR04A	256*	25FEB05	11APR05	146	LOE	26,006.05	35,771.74					
1409-027	Cryo Line Installation	03MAY04A	03MAY04A	185*	01NOV04	01FEB05	169	5	1,437.09	28,741.71					
1409-141	Modify Cryostat for TRC	07FEB05*	07FEB05*	10	18FEB05	18FEB05	1,166		0.00	0.00					
1409-130	Cryostat (specimen shroud) dsn	03JAN05*	04JAN05*	40	25FEB05	28FEB05	357		0.00	6,699.60					
1409-135	Cryostat (specimen shroud) Fabr & Install	28FEB05	01MAR05	43	27APR05	28APR05	357		0.00	23,436.00					
1409-044	Final Design & ACC Review	21FEB05	21FEB05	1	18FEB05	21FEB05	1,166		0.00	0.00					
1409-028	System Testing (planar racetrack)	21JAN05*	07MAR05*	26	25FEB05	11APR05	146		0.00	18,569.95					
1409-160	Test Closed Loop Cooling	18FEB05	04APR05	6	25FEB05	11APR05	146		0.00	3,182.00					
1409-165	Closed Loop Facility Available for TRC			0	25FEB05	11APR05	146		0.00	0.00					
1409-199	Closed Loop Facility Available for Production MC			0	27APR05	10MAY05*	349		0.00	0.00					
Job: 1411-MCWF Fabrication S005242-HEITZENROEDER															
172-031	Title III engr	24MAY04A	24MAY04A	589*	29SEP06	29SEP06	761	LOE	42,931.85	169,691.11					
MCWF-001	EIO Project Mgt. & Reporting		29OCT04A	496*		29SEP06	774	LOE	77,250.55	908,830.00					
MCWF-011	Pattern A complete		29OCT04A	81*		25FEB05	158	18	45,921.60	255,120.00					
MCWF-021	Pattern B complete		01DEC04A	92*		12APR05	174	7	17,858.40	255,120.00					

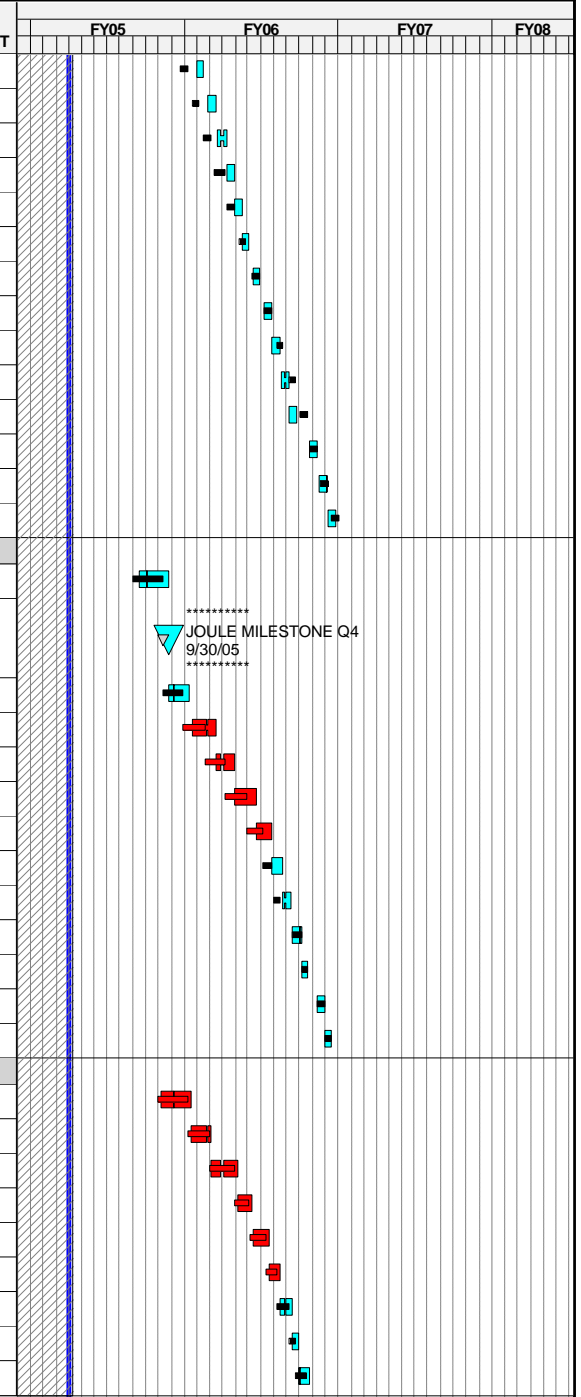


Activity ID	Activity Description	Baseline Start	Forecast Start	Orig Dur	Baseline Finish	Forecast Finish	Total Float	PCTC	Earned value cost (BCWP)	Budget	ETC ADD'L COST	FY05	FY06	FY07	FY08	
MCWF-031	Major Tool Tooling Complete		29OCT04A	73*		15FEB05	130	50	374,750.00	749,500.00		41=500sk ; 48=55 ;				
MCWF-041	Materials (MetalTek)		29NOV04A	347*		31MAR06	116	18	134,055.00	744,750.00		48=745 ;				
MCWF-051	C1-MTK-casting upgrade		04JAN05	48*		10MAR05	113		0.00	112,520.00		48=113 ;				
MCWF-061	C1-MTM - machining/inspection		11MAR05	55*		26MAY05	113		0.00	154,910.00		48=155 ;				
MCWF-071	C1-Receive at PPPL			0		27MAY05	113		0.00	0.00		▼				
C-121.1	First MCWF C-1 Delivered			0	13MAY05	27MAY05	113		0.00	0.00		▼				
MCWF-081	C2-MTK-casting		21FEB05*	43		20APR05	100		0.00	140,810.00		48=141 ;				
MCWF-091	C2-MTM - machining/inspection		21APR05	65		20JUL05	104		0.00	154,910.00		48=155 ;				
MCWF-101	C2-Receive at PPPL			0		21JUL05	104		0.00	0.00		▼				
MCWF-111	A1-MTK-casting		19MAY05	15		08JUN05	100		0.00	140,810.00		48=141 ;				
MCWF-121	A1-MTM - machining/inspection		09JUN05	60		31AUG05	100		0.00	154,910.00		48=155 ;				
MCWF-131	A1-Receive at PPPL			0		01SEP05	100		0.00	0.00		▼				
MCWF-141	C3-MTK-casting		09JUN05	18		04JUL05	111		0.00	140,810.00		48=141 ;				
MCWF-151	C3-MTM - machining/inspection		05JUL05	65		03OCT05	111		0.00	154,910.00		48=155 ;				
MCWF-161	C3-Receive at PPPL			0		04OCT05	111		0.00	0.00		▼				
MCWF-171	B1-MTK-casting		05JUL05	18		28JUL05	115		0.00	140,810.00		48=141 ;				
MCWF-181	B1-MTM - machining/inspection		29JUL05	65		27OCT05	121		0.00	154,910.00		48=155 ;				
MCWF-191	B1-Receive at PPPL			0		28OCT05	121		0.00	0.00		▼				
MCWF-201	A2-MTK-casting		29JUL05	18		23AUG05	115		0.00	140,810.00		48=141 ;				
MCWF-211	A2-MTM - machining/inspection		24AUG05	65		22NOV05	115		0.00	154,910.00		48=155 ;				
MCWF-221	A2-Receive at PPPL			0		23NOV05	115		0.00	0.00		▼				
MCWF-231	A3-MTK-casting		24AUG05	17		15SEP05	122		0.00	140,810.00		48=141 ;				
MCWF-241	A3-MTM - machining/inspection		16SEP05	65		15DEC05	122		0.00	154,910.00		48=155 ;				
MCWF-251	A3-Receive at PPPL			0		16DEC05	122		0.00	0.00		▼				
MCWF-261	A4-MTK-casting		16SEP05	14		05OCT05	132		0.00	140,810.00		48=141 ;				
MCWF-271	A4-MTM - machining/inspection		06OCT05	65		04JAN06	137		0.00	154,910.00		48=155 ;				
MCWF-281	A4-Receive at PPPL			0		05JAN06	137		0.00	0.00		▼				
MCWF-291	A5-MTK-casting		06OCT05	15		26OCT05	132		0.00	140,810.00		48=141 ;				
MCWF-301	A5-MTM - machining/inspection		27OCT05	65		25JAN06	134		0.00	154,910.00		48=155 ;				
MCWF-311	A5-Receive at PPPL			0		26JAN06	134		0.00	0.00		▼				
MCWF-321	A6-MTK-casting		27OCT05	14		15NOV05	132		0.00	140,810.00		48=141 ;				
MCWF-331	A6-MTM - machining/inspection		16NOV05	65		14FEB06	149		0.00	154,910.00		48=155 ;				
MCWF-341	A6-Receive at PPPL			0		15FEB06	149		0.00	0.00		▼				
MCWF-351	B2-MTK-casting		16NOV05	17		08DEC05	132		0.00	140,810.00		48=141 ;				
MCWF-361	B2-MTM - machining/inspection		09DEC05	65		09MAR06	144		0.00	154,910.00		48=155 ;				
MCWF-371	B2-Receive at PPPL			0		10MAR06	144		0.00	0.00		▼				
MCWF-381	B3-MTK-casting		09DEC05	20		05JAN06	132		0.00	140,810.00		48=141 ;				
MCWF-391	B3-MTM - machining/inspection		06JAN06	65		06APR06	136		0.00	154,910.00		48=155 ;				
MCWF-401	B3-Receive at PPPL			0		07APR06	136		0.00	0.00		▼				

Activity ID	Activity Description	Baseline Start	Forecast Start	Orig Dur	Baseline Finish	Forecast Finish	Total Float	PCTC	Earned value cost (BCWP)	Budget	ETC ADD'L COST	FY05	FY06	FY07	FY08
MCWF-411	B4-MTK-casting		06JAN06	14		25JAN06	132		0.00	140,810.00					
MCWF-421	B4-MTM - machining/inspection		26JAN06	65		26APR06	136		0.00	154,910.00					
MCWF-431	B4-Receive at PPPL			0		27APR06	136		0.00	0.00					
MCWF-441	B5-MTK-casting		26JAN06	15		15FEB06	132		0.00	140,810.00					
MCWF-451	B5-MTM - machining/inspection		16FEB06	65		17MAY06	133		0.00	154,910.00					
MCWF-461	B5-Receive at PPPL			0		18MAY06	133		0.00	0.00					
MCWF-471	B6-MTK-casting		16FEB06	15		08MAR06	132		0.00	140,810.00					
MCWF-481	B6-MTM - machining/inspection		09MAR06	65		07JUN06	132		0.00	154,910.00					
MCWF-491	B6-Receive at PPPL			0		08JUN06	132		0.00	0.00					
MCWF-501	C4-MTK-casting		03APR06	17		25APR06	116		0.00	140,810.00					
MCWF-511	C4-MTM - machining/inspection		26APR06	65		25JUL06	116		0.00	154,910.00					
MCWF-521	C4-Receive at PPPL			0		26JUL06	116		0.00	0.00					
MCWF-531	C5-MTK-casting		26APR06	16		17MAY06	117		0.00	140,810.00					
MCWF-541	C5-MTM - machining/inspection		18MAY06	65		16AUG06	120		0.00	154,910.00					
MCWF-551	C5-Receive at PPPL			0		17AUG06	120		0.00	0.00					
MCWF-561	C6-MTK-casting		18MAY06	15		07JUN06	117		0.00	140,810.00					
MCWF-571	C6-MTM - machining/inspection		08JUN06	65		06SEP06	117		0.00	154,910.00					
MCWF-581	C6-Receive at PPPL			0		07SEP06	117		0.00	0.00					
C-501B1	Last MCWF Delivered			0	14SEP06	07SEP06	117		0.00	0.00					
Job: 1413 -MCWF Fracture Analysis-HEITZENROEDER															
1413-100	Oversight		17JAN05*	35		04MAR05	1,184		0.00	0.00	\$6,716				
1413-110	Cut 3 discs from proto;cut 1 into qrts (MTM)		17JAN05*	10		28JAN05	1,184		0.00	0.00	\$9,167				
1413-120	Weld quartered discs (Metal Tek)		31JAN05	5		04FEB05	1,184		0.00	0.00	\$1,222				
1413-130	Machine test blanks (PPPL)		07FEB05	10		18FEB05	1,184		0.00	0.00	\$3,182				
1413-140	Wire EDM 12 specimens (Crystal)		21FEB05	5		25FEB05	1,184		0.00	0.00	\$833				
1413-150	Perform fracture tests (NHMFL)		28FEB05	5		04MAR05	1,184		0.00	0.00	\$4,333				
Job: 1431 - Modular Coil Local I&C															
174-001	Title I design WBS 143 Mod coil local I&C	03OCT05*	03OCT05*	30	11NOV05	11NOV05	870		0.00	14,252.83					
174-011	Title II design WBS 143 Mod coil local I&C	14NOV05	14NOV05	30	04JAN06	04JAN06	870		0.00	14,252.83					
174-035	Modular Coil local I&C -Procurement	05JAN06	05JAN06	60	29MAR06	29MAR06	875		0.00	17,195.70					
174-036	Modular Coil local I&C -Title III	05JAN06	05JAN06	80	26APR06	26APR06	875		0.00	5,604.24					
174-037	Modular Coil local I&C -Install	15JAN07*	15JAN07*	20	09FEB07	09FEB07	678		0.00	69,110.28					
Job: 1451 - Mod Coil Winding-CHRZANOWSKI															
Station 1 Prep, Install Cladding, Final Clamps															
P1-001	Receive C1, Prep& Instl Cladding(Station 1)	16MAY05	31MAY05	12	01JUN05	15JUN05	110		0.00	0.00					
P1-091	Receive C2, Prep& Instl Cladding(Station 1)	15JUL05	22JUL05	12	01AUG05	08AUG05	101		0.00	0.00					
P2-001	Receive A-1, Prep& Instl Cladding(Station 1)	09AUG05	02SEP05	12	24AUG05	20SEP05	91		0.00	0.00					
P2-091	Receive C3, Prep& Instl Cladding(Station 1)	31AUG05	05OCT05	12	16SEP05	20OCT05	103		0.00	0.00					

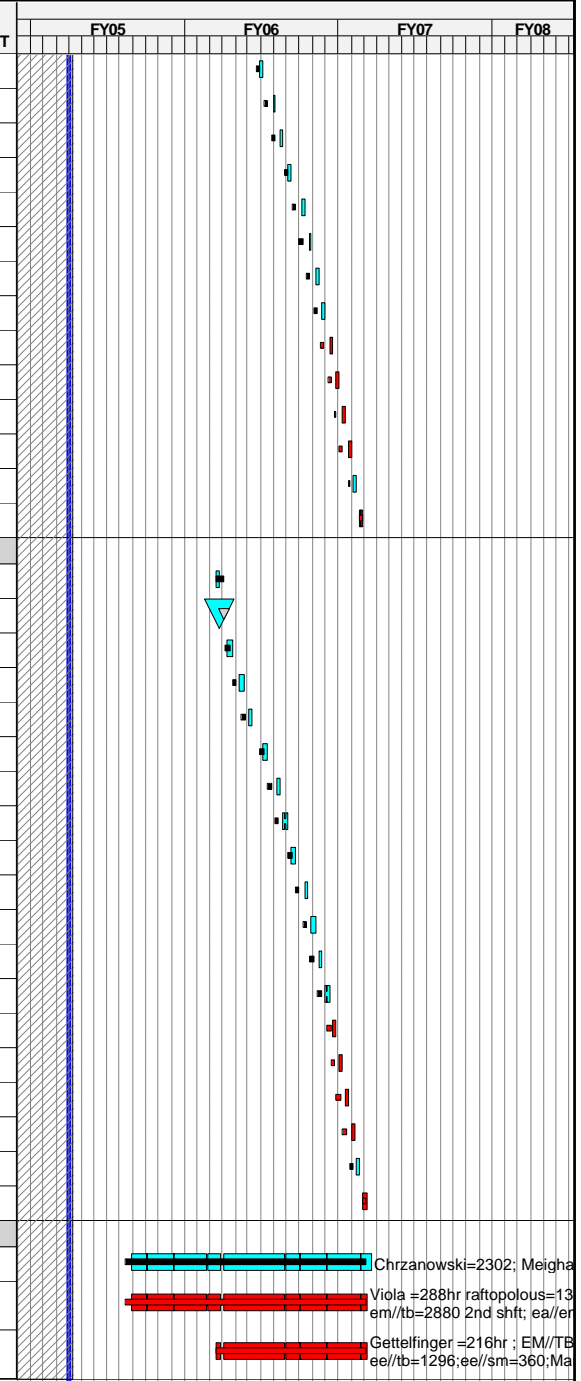
Run Date	19JAN05 13:33		0412	NCSX ECP 18 January 1 Status	Sheet 16 of 40
© Primavera Systems, Inc.					

Activity ID	Activity Description	Baseline Start	Forecast Start	Orig Dur	Baseline Finish	Forecast Finish	Total Float	PCTC	Earned value cost (BCWP)	Budget	ETC ADD'L COST	FY									
												FY05	FY06	FY07	FY08						
P3-001	Receive B1, Prep& Instl Cladding(Station 1)	23SEP05	31OCT05	12	10OCT05	15NOV05	113		0.00	0.00											
P3-091	Receive A2, Prep& Instl Cladding(Station 1)	20OCT05	28NOV05	12	04NOV05	13DEC05	107		0.00	0.00											
P1-031	Receive A3, Prep& Instl Cladding(Station 1)	16NOV05	19DEC05	12	05DEC05	11JAN06	115		0.00	0.00											
P1-121	Receive A4, Prep& Instl Cladding(Station 1)	13DEC05	12JAN06	12	05JAN06	27JAN06	131		0.00	0.00											
P2-031	Receive A5, Prep& Instl Cladding(Station 1)	11JAN06	30JAN06	12	26JAN06	14FEB06	131		0.00	0.00											
P2-121	Receive A6, Prep& Instl Cladding(Station 1)	09FEB06	16FEB06	12	24FEB06	03MAR06	146		0.00	0.00											
P3-031	Receive B2, Prep& Instl Cladding(Station 1)	10MAR06	13MAR06	12	27MAR06	28MAR06	141		0.00	0.00											
P3-121	Receive B3, Prep& Instl Cladding(Station 1)	10APR06	10APR06	12	25APR06	25APR06	133		0.00	0.00											
P1-061	Receive B4, Prep& Instl Cladding(Station 1A)	09MAY06	28APR06	12	24MAY06	15MAY06	133		0.00	0.00											
P1-151	Receive B5, Prep& Instl Cladding(Station 1A)	06JUN06	19MAY06	12	21JUN06	06JUN06	130		0.00	0.00											
P2-061	Receive B6, Prep& Instl Cladding(Station 1A)	05JUL06	09JUN06	12	20JUL06	26JUN06	128		0.00	0.00											
P2-151	Receive C4, Prep& Instl Cladding(Station 1A)	27JUL06	27JUL06	12	11AUG06	11AUG06	108		0.00	0.00											
P3-061	Receive C5, Prep& Instl Cladding(Station 1A)	21AUG06	18AUG06	12	06SEP06	05SEP06	112		0.00	0.00											
P3-151	Receive C6, Prep& Instl Cladding(Station 1A)	15SEP06	08SEP06	12	02OCT06	25SEP06	110		0.00	0.00											
Station 2-Winding, Instl Chill Plates,Tubing,Bag																					
P1-011	Wind coil C-1 (station 2)	02JUN05*	16JUN05*	49	10AUG05	24AUG05	110		0.00	0.00											
P1-011J	Complete Winding First Modular Coil			0	10AUG05	24AUG05	1,036		0.00	0.00											
P1-020	Instl Chill Plates,Tubing, Bag C1 (Station 2)	11AUG05	25AUG05	33	27SEP05	11OCT05	110		0.00	0.00											
P2-101	Wind coil C-3 (station2)	28SEP05	21OCT05	38	18NOV05	15DEC05	103		0.00	0.00											
P2-110	Instl Chill Plates,Tubing, Bag C3(Station 2)	21NOV05	16DEC05	25	04JAN06	27JAN06	103		0.00	0.00											
P1-041	Wind coil A3 (station 2)	05JAN06	30JAN06	38	27FEB06	22MAR06	103		0.00	0.00											
P1-050	Instl Chl Plates,Tubing, Bag A3(Station 2)	28FEB06	23MAR06	25	03APR06	26APR06	103		0.00	0.00											
P2-131	Wind coil A6 (station 2) 2 shift	04APR06	27APR06	19	28APR06	23MAY06	108		0.00	0.00											
P2-140	Instl Chl Plates,Tubing, Bag A6(Station 2) 2shft	01MAY06	24MAY06	12	16MAY06	09JUN06	108		0.00	0.00											
P1-071	Wind coil B4 (station 2)**2 shift	13JUN06	13JUN06	16	06JUL06	05JUL06	116		0.00	0.00											
P1-080	Instl Chl Plates,Tubing,Bag B4(Station 2)*2 shft	07JUL06	06JUL06	11	21JUL06	20JUL06	116		0.00	0.00											
P2-161	Wind coil C4 (station 2) **2 shift	14AUG06	14AUG06	14	31AUG06	31AUG06	116		0.00	0.00											
P2-170	Instl Chill Plates,Tubing,Bag C4Station2)*2 shft	01SEP06	01SEP06	10	15SEP06	14SEP06	116		0.00	0.00											
Station 3-Winding, Instl Chill Plates,Tubing,Bag																					
P1-101	Wind coil C-2(station 3)	02AUG05*	09AUG05*	49	10OCT05	17OCT05	101		0.00	0.00											
P1-110	Instl Chill Plates,Tubing, Bag C2 (Station 3)	11OCT05	18OCT05	33	28NOV05	05DEC05	101		0.00	0.00											
P3-011	Wind coil B1 (station 3)	29NOV05	06DEC05	38	27JAN06	03FEB06	101		0.00	0.00											
P3-020	Instl Chill Plates,Tubing, Bag B1 (Station 3)	30JAN06	06FEB06	25	03MAR06	10MAR06	101		0.00	0.00											
P1-131	Wind coil A4 (station 3) 60h/wk	06MAR06	13MAR06	28	12APR06	19APR06	101		0.00	0.00											
P1-140	Instl Chl Plates,Tubing, BagA4Station 3) 60h/wk	13APR06	20APR06	19	09MAY06	16MAY06	101		0.00	0.00											
P3-041	Wind coil B2 (station 3) 2 shift	10MAY06	17MAY06	19	06JUN06	13JUN06	106		0.00	0.00											
P3-050	Instl Chl Plates,Tubing, BagB2Station 3)2 shft	07JUN06	14JUN06	12	22JUN06	29JUN06	106		0.00	0.00											
P1-161	Wind coil B5 (station 3) **2 shift	23JUN06	30JUN06	16	18JUL06	24JUL06	114		0.00	0.00											



Activity ID	Activity Description	Baseline Start	Forecast Start	Orig Dur	Baseline Finish	Forecast Finish	Total Float	PCTC	Earned value cost (BCWP)	Budget	ETC ADD'L COST	FY							
												FY05	FY06	FY07	FY08				
P1-170	Instl Chill Plates,Tubing,Bag B5Station 3)*2shft	19JUL06	25JUL06	11	02AUG06	08AUG06	114		0.00	0.00									
P3-071	Wind coil C5 (station 3) **2 shift	07SEP06	06SEP06	14	26SEP06	25SEP06	114		0.00	0.00									
P3-080	Instl Chill Plates,Tubing,Bag C5Station 3)*2shft	27SEP06	26SEP06	10	10OCT06	09OCT06	114		0.00	0.00									
Station 4-Winding, Instl Chill Plates,Tubing,Bag																			
P2-011	Wind coil A1 (station 4)	25AUG05	21SEP05	49	02NOV05	30NOV05	91		0.00	0.00									
P2-020	Instl Chill Plates,Tubing, Bag A1 (Station 4)	03NOV05	01DEC05	25	09DEC05	12JAN06	91		0.00	0.00									
P3-101	Wind coil A2 (station 4)	12DEC05	13JAN06	38	09FEB06	07MAR06	91		0.00	0.00									
P3-110	Instl Chill Plates,Tubing, Bag A2 (Station 4)	10FEB06	08MAR06	25	16MAR06	11APR06	91		0.00	0.00									
P2-041	Wind coil A5 (station 4) 60 h/wk	17MAR06	12APR06	28	25APR06	19MAY06	91		0.00	0.00									
P2-050	Instl Chl Plates,Tubing, Bag A5 (Station 4)60h/w	26APR06	22MAY06	19	22MAY06	16JUN06	91		0.00	0.00									
P3-131	Wind coil B3 (station 4) 2 shift	23MAY06	19JUN06	19	19JUN06	14JUL06	96		0.00	0.00									
P3-140	Instl Chl Plates,Tubing, Bag B3 (Station 4)2shft	20JUN06	17JUL06	12	07JUL06	01AUG06	96		0.00	0.00									
P2-071	Wind coil B6 (station 4)**2 shift	21JUL06	02AUG06	16	11AUG06	23AUG06	103		0.00	0.00									
P2-080	Instl Chill Plates,Tubing,Bag B6(Station 4)2shft	14AUG06	24AUG06	11	28AUG06	08SEP06	103		0.00	0.00									
P3-161	Wind coil C6 (station 4)** 2 shift	03OCT06	26SEP06	14	20OCT06	13OCT06	110		0.00	0.00									
P3-170	Instl Chill Plates,Tubing,BagC6Station 4)**2shft	23OCT06	16OCT06	10	03NOV06	27OCT06	110		0.00	0.00									
Station 5-VPI																			
P1-021V	VPI (Station 5) C1	28SEP05	12OCT05	14	17OCT05	31OCT05	154		0.00	0.00									
P1-111V	VPI (Station 5) C2	29NOV05	06DEC05	14	16DEC05	23DEC05	131		0.00	0.00									
P2-021V	VPI (Station 5) A1	19DEC05	13JAN06	14	13JAN06	01FEB06	123		0.00	0.00									
P2-111V	VPI (Station 5) C3	16JAN06	02FEB06	14	02FEB06	21FEB06	123		0.00	0.00									
P3-021V	VPI (Station 5) B1	06MAR06	13MAR06	13	22MAR06	29MAR06	110		0.00	0.00									
P3-111V	VPI (Station 5) A2	23MAR06	12APR06	13	10APR06	28APR06	101		0.00	0.00									
P1-051V	VPI (Station 5) A3	11APR06	01MAY06	12	26APR06	16MAY06	101		0.00	0.00									
P1-141V	VPI (Station 5) A4	10MAY06	17MAY06	12	25MAY06	02JUN06	101		0.00	0.00									
P2-051V	VPI (Station 5) A5	26MAY06	19JUN06	12	13JUN06	05JUL06	91		0.00	0.00									
P2-141V	VPI (Station 5) A6	14JUN06	06JUL06	12	29JUN06	21JUL06	91		0.00	0.00									
P3-051V	VPI (Station 5) B2	30JUN06	24JUL06	12	19JUL06	08AUG06	91		0.00	0.00									
P3-141V	VPI (Station 5) B3	20JUL06	09AUG06	12	04AUG06	24AUG06	91		0.00	0.00									
P1-081V	VPI (Station 5) B4	07AUG06	25AUG06	11	21AUG06	11SEP06	91		0.00	0.00									
P1-171V	VPI (Station 5) B5	22AUG06	12SEP06	11	06SEP06	26SEP06	91		0.00	0.00									
P2-081V	VPI (Station 5) B6	07SEP06	27SEP06	10	20SEP06	10OCT06	91		0.00	0.00									
P3-081V	VPI (Station 5) C4	21SEP06	11OCT06	10	04OCT06	24OCT06	91		0.00	0.00									
P2-171V	VPI (Station 5) C5	11OCT06	25OCT06	10	24OCT06	07NOV06	103		0.00	0.00									
P3-171V	VPI (Station 5) C6	06NOV06	08NOV06	10	17NOV06	21NOV06	103		0.00	0.00									
Station 1B Final Clamp Installation																			
P1-021C	Install Clamps (Station1) C1	18OCT05	01NOV05	7	26OCT05	09NOV05	221		0.00	0.00									
P1-111C	Install Clamps (Station1) C2	19DEC05	03JAN06	7	04JAN06	11JAN06	192		0.00	0.00									
P2-021C	Install Clamps (Station1) A1	16JAN06	02FEB06	6	23JAN06	09FEB06	179		0.00	0.00									
P2-111C	Install Clamps (Station1) C3	03FEB06	22FEB06	6	10FEB06	01MAR06	172		0.00	0.00									

Activity ID	Activity Description	Baseline Start	Forecast Start	Orig Dur	Baseline Finish	Forecast Finish	Total Float	PCTC	Earned value cost (BCWP)	Budget	ETC ADD'L COST	FY			
												FY05	FY06	FY07	FY08
P3-021C	Install Clamps (Station1) B1	23MAR06	30MAR06	5	29MAR06	05APR06	154		0.00	0.00					
P3-111C	Install Clamps (Station1) A2	11APR06	01MAY06	5	17APR06	05MAY06	139		0.00	0.00					
P1-051C	Install Clamps (Station1) A3	27APR06	17MAY06	5	03MAY06	23MAY06	134		0.00	0.00					
P1-141C	Install Clamps (Station1) A4	26MAY06	05JUN06	5	02JUN06	09JUN06	129		0.00	0.00					
P2-051C	Install Clamps (Station1) A5	14JUN06	06JUL06	5	20JUN06	12JUL06	114		0.00	0.00					
P2-141C	Install Clamps (Station1) A6	30JUN06	24JUL06	5	10JUL06	28JUL06	109		0.00	0.00					
P3-051C	Install Clamps (Station1) B2	20JUL06	09AUG06	5	26JUL06	15AUG06	104		0.00	0.00					
P3-141C	Install Clamps (Station1) B3	07AUG06	25AUG06	5	11AUG06	31AUG06	105		0.00	0.00					
P1-081C	Install Clamps (Station1) B4	22AUG06	12SEP06	5	28AUG06	18SEP06	101		0.00	0.00					
P1-171C	Install Clamps (Station1) B5	07SEP06	27SEP06	5	13SEP06	03OCT06	97		0.00	0.00					
P2-081C	Install Clamps (Station1) B6	21SEP06	11OCT06	5	27SEP06	17OCT06	94		0.00	0.00					
P3-081C	Install Clamps (Station1) C4	05OCT06	25OCT06	5	11OCT06	31OCT06	91		0.00	0.00					
P3-171C	Install Clamps (Station1) C5	25OCT06	08NOV06	4	30OCT06	13NOV06	104		0.00	0.00					
P2-171C	Install Clamps (Station1) C6	20NOV06	22NOV06	4	27NOV06	29NOV06	103		0.00	0.00					
Station 6- Coil Test Facility															
P1-021	Test Coil (Coil Test Stand) C1	15DEC05	14DEC05	8	03JAN06	23DEC05	199		0.00	0.00					
P1-021.1	Complete First Mod Coil Fabrication C1			0	03JAN06	23DEC05	952		0.00	0.00					
P1-111	Test Coil (Coil Test Stand) C2	05JAN06	12JAN06	8	16JAN06	23JAN06	192		0.00	0.00					
P2-021	Test Coil (Coil Test Stand) A1	24JAN06	10FEB06	7	01FEB06	20FEB06	179		0.00	0.00					
P2-111	Test Coil (Coil Test Stand) C3	13FEB06	02MAR06	7	21FEB06	10MAR06	172		0.00	0.00					
P3-021	Test Coil (Coil Test Stand) B1	30MAR06	06APR06	7	07APR06	14APR06	154		0.00	0.00					
P3-111	Test Coil (Coil Test Stand) A2	18APR06	08MAY06	7	26APR06	16MAY06	139		0.00	0.00					
P1-051	Test Coil (Coil Test Stand) A3	04MAY06	24MAY06	7	12MAY06	02JUN06	134		0.00	0.00					
P1-141	Test Coil (Coil Test Stand) A4	05JUN06	12JUN06	7	13JUN06	20JUN06	129		0.00	0.00					
P2-051	Test Coil (Coil Test Stand) A5	21JUN06	13JUL06	7	29JUN06	21JUL06	114		0.00	0.00					
P2-141	Test Coil (Coil Test Stand) A6	11JUL06	31JUL06	7	19JUL06	08AUG06	109		0.00	0.00					
P3-051	Test Coil (Coil Test Stand) B2	27JUL06	16AUG06	7	04AUG06	24AUG06	104		0.00	0.00					
P3-141	Test Coil (Coil Test Stand) B3	14AUG06	01SEP06	7	22AUG06	12SEP06	105		0.00	0.00					
P1-081	Test Coil (Coil Test Stand) B4	05SEP06	19SEP06	7	13SEP06	27SEP06	101		0.00	0.00					
P1-171	Test Coil (Coil Test Stand) B5	14SEP06	04OCT06	7	22SEP06	12OCT06	97		0.00	0.00					
P2-081	Test Coil (Coil Test Stand) B6	28SEP06	18OCT06	7	06OCT06	26OCT06	94		0.00	0.00					
P2-171	Test Coil (Coil Test Stand) C4	12OCT06	01NOV06	7	20OCT06	09NOV06	91		0.00	0.00					
P3-171	Test Coil (Coil Test Stand) C5	31OCT06	14NOV06	6	07NOV06	21NOV06	104		0.00	0.00					
P3-081	Test Coil (Coil Test Stand) C6	28NOV06	30NOV06	6	05DEC06	07DEC06	103		0.00	0.00					
LABR															
171-040	Winding Oversight (LOE)	16MAY05*	31MAY05*	391	06DEC06	19DEC06	706		0.00	651,427.38					
171-041	Modular Coil Winding (18 coils)	16MAY05	31MAY05	383*	05DEC06	07DEC06	103		0.00	3,177,511.31					
171-041CT	PBR Increment for cold testing	15DEC05	14DEC05	246*	05DEC06	07DEC06	103		0.00	444,175.19					



█ Chrzanowski=2302; Meigha
█ Viola =288hr raftopolous=13
em//tb=2880 2nd shift; ea//er
█ Gettelfinger =216hr ; EM//TB
ee//tb=1296; ee//sm=360; Ma

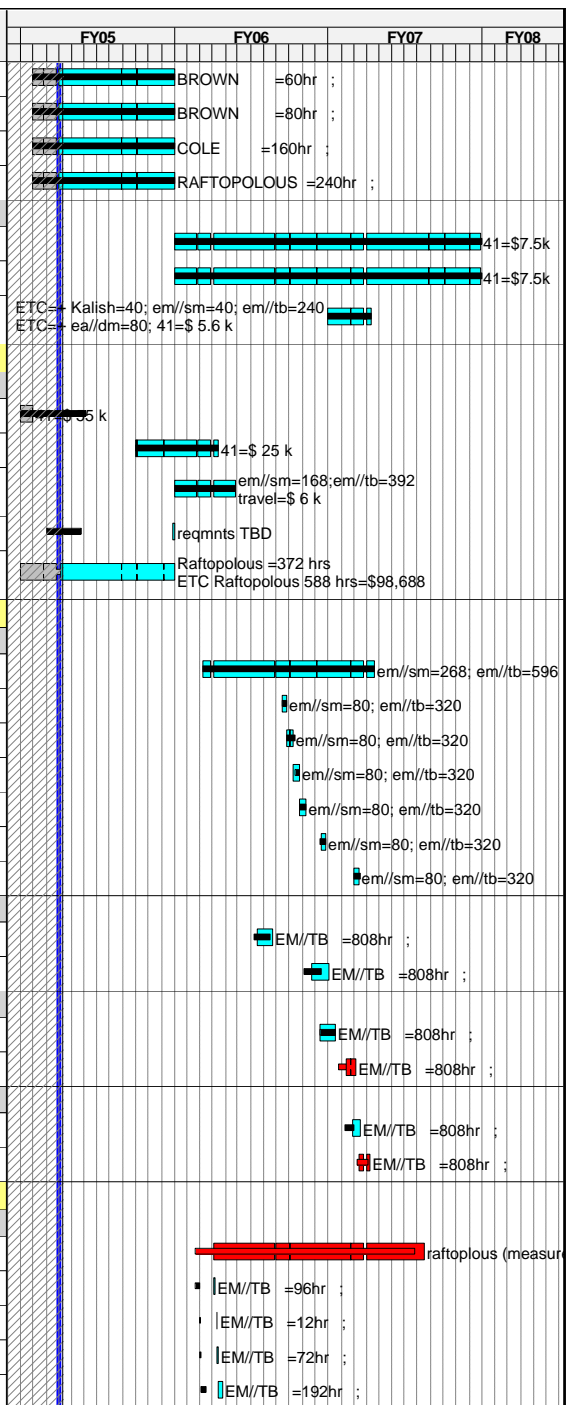
Activity ID	Activity Description	Baseline Start	Forecast Start	Orig Dur	Baseline Finish	Forecast Finish	Total Float	PCTC	Earned value cost (BCWP)	Budget	ETC ADD'L COST	FY05	FY06	FY07	FY08
TITLE3WIN	Title III Design-PRODUCTION WINDING	01JUN05*	01JUN05*	145*	03JAN06	03JAN06	951		0.00	72,489.23					
15 - Structures															
Job: 1501 - Structures Design- Kalish															
1501-FY05	Prelim & Final Design Structures	01MAR05*	18MAR05*	75	18JUL05	01JUL05	197		0.00	170,744.13					
1501-PDR	Structures PDR			0	29APR05*	29APR05*	1,123		0.00	0.00					
1501-FDR	Structures FDR			0	18JUL05*	18JUL05*	187		0.00	0.00					
Job:1550 - Structures Procurement -KALISH															
1501-245	Prep Spec,Solicit Bids, and Evaluate Bids	30AUG05	31AUG05	65	01DEC05	01DEC05	156		0.00	0.00					
162-036.9	Award Coil Support Assy			0	01DEC05*	01DEC05*	156		0.00	0.00					
162-037	WBS 151Coil Support Assy Procurement [A/1]	02DEC05	02DEC05	249	01DEC06	30NOV06	156		0.00	985,700.49					
162-031	Title III engr WBS 151	02DEC05	02DEC05	249	01DEC06	30NOV06	719		0.00	156,985.78					
153.037	WBS 153 Support Structure I&C Procurement/Fab	03APR06*	03APR06*	249	02APR07	30MAR07	639		0.00	8,647.88					
153.015	Title III design WBS 153 local&C	02OCT06*	02OCT06*	249	28SEP07	28SEP07	512		0.00	4,953.56					
16 - Coil Services															
161 - LN2 Distribution															
191-001	Title I design WBS 161 LN2 manifolds&piping	01DEC05*	01DEC05*	65	09MAR06	09MAR06	216		0.00	50,654.84					
191-011	Title II design WBS 161 LN2 manifolds&piping	10MAR06	10MAR06	60	02JUN06	02JUN06	216		0.00	101,456.92					
191-031	Title III engr WBS 161	05JUN06*	05JUN06*	280	18JUL07	17JUL07	564		0.00	14,529.54					
191-037	Procurement WBS 161	01SEP06*	01SEP06*	130	14MAR07	14MAR07	153		0.00	69,873.63					
191-038	PDR#17	15MAR07*	15MAR07*	86	16JUL07	16JUL07	565		0.00	58,777.00					
191-041	LN2 Manifolds & ppg Fab/assy/instl WBS 161	19APR07*	19APR07*	62	17JUL07	17JUL07	128		0.00	32,466.17					
191-042	PDR #17,25,3	19APR07*	19APR07*	65	20JUL07	20JUL07	561		0.00	10,346.85					
162 - Electrical Leads															
132-000	PDR #17 & 25	30NOV05*	30NOV05*	325	23MAR07	22MAR07	645		0.00	40,192.85					
132-001	Title I design WBS 162 Coil leads	01DEC05*	01DEC05*	130	09JUN06	09JUN06	208		0.00	131,638.16					
132-011	Title II design WBS 162 Coil leads	12JUN06	12JUN06	130	15DEC06	14DEC06	208		0.00	134,254.23					
132-015	Title III design WBS 162 Coil leads	18DEC06*	15DEC06*	60	19MAR07	16MAR07	649		0.00	16,089.08					
132-037	Coil Leads Procurement WBS 162	18MAY07*	24APR07*	60	13AUG07	18JUL07	122		0.00	296,296.50					
163 - Coil Protection System															
163.001	Title I design WBS 163 Coil protection	03OCT05*	03OCT05*	65	11JAN06	11JAN06	905		0.00	39,432.08					
163.011	Title II design WBS 163 Coil protection	12JAN06	12JAN06	40	08MAR06	08MAR06	905		0.00	39,432.08					
17 - Cryostat and Base Support Structure															
Job:1701-Cryostat&Base Sprt Strct Dsn-GETTLFINGER															
151-001	Title I design WBS 171 cryostat shell & struct	01APR04A	01APR04A	219*	15DEC04	17FEB05	221	85	109,345.58	128,641.85					
161-001	Title I design WBS 172 base support struct	01APR04A	01APR04A	219*	15DEC04	17FEB05	221	85	43,325.29	50,970.93					
151-002	Cryostat & Base Support Struct PDR			0	15DEC04	17FEB05	221		0.00	0.00					
161-011	Final Design Base Support Structure WBS 172	16DEC04	18FEB05	114	28JUL05	29JUL05	221		0.00	62,374.28					

Run Date	19JAN05 13:33		0412	NCSX ECP 18 January 1 Status	Sheet 20 of 40
© Primavera Systems, Inc.					

Activity ID	Activity Description	Baseline Start	Forecast Start	Orig Dur	Baseline Finish	Forecast Finish	Total Float	PCTC	Earned value cost (BCWP)	Budget	ETC ADD'L COST	FY05	FY06	FY07	FY08
172-199	Base Support Structure FDR			0	28JUL05	29JUL05	221		0.00	0.00					
151-011	Final Design Cryostat WBS 171	29JUL05	01AUG05*	196	11MAY06	12MAY06	221		0.00	228,984.97					
171-199	Cryostat FDR			0	11MAY06	12MAY06	221		0.00	0.00					
173-100	Title I Design WBS 173 Spacer Manipulator		03OCT05*	65		11JAN06	139		0.00	0.00					
173-115	WBS 173 Spacer Manipulator PDR			0		11JAN06	139		0.00	0.00					
173-120	Title II Design WBS 173 Spacer Manipulator		12JAN06	65		12APR06	139		0.00	0.00					
173-125	WBS 173 Spacer Manipulator FDR			0		12APR06	139		0.00	0.00					
173-130	Prep & Issues Req for Spacer Manipulator		13APR06	10		26APR06	139		0.00	0.00					
173-135	Bid/Evaluate/Award Spacer Manipulator		27APR06	40		22JUN06	139		0.00	0.00					
173-140	Fabricate Spacer Manipulator		23JUN06	130		04JAN07	139		0.00	0.00					
Job: 1751 - Cryostat Procurement															
171 - Cryostat															
151-031	Title III engr	12MAY06	15MAY06	405	02JAN08	01JAN08	453		0.00	30,552.17					
151-036.8	Prep Spec, Solicit bids, and Select Vendor	12MAY06	15MAY06	65	15AUG06	15AUG06	221		0.00	0.00					
151-036.9	Award Cryostat Procurement			0	02OCT06*	02OCT06*	188		0.00	0.00					
151-037	Cryostat Procurement [A/1]	03OCT06	03OCT06*	141	26APR07	27APR07	188		0.00	478,642.75					
Job: 1752 - Base Support Structure Procurement															
172 - Base Support Structure															
161-031	Title III engr WBS 172	03OCT05*	03OCT05*	240	19SEP06	18SEP06	770		0.00	47,352.48					
161-036.8	Prep Spec, Solicit bids, and Select Vendor	29JUL05	01AUG05	65	28OCT05	31OCT05	324		0.00	0.00					
161-036.9	Award Machine Base&supports Procurement			0	28OCT05*	31OCT05*	324		0.00	0.00					
161-037	Machine Base&supports Procurement [A/1]	31OCT05	01NOV05	90	15MAR06	16MAR06	324		0.00	283,051.70					
18 - Field Period Assembly															
Job: 1802 - FP Assy Oversight&Support-VIOLA															
Oversight and Supervision															
181.110	PPPL EM LOE FY05	01OCT04*	01OCT04A	249*	30SEP05	30SEP05	1,010	LOE	11,044.66	47,402.00					
181.210	HP Coverage in the TFTR TC LOE FY05	01OCT04*	01OCT04A	249*	30SEP05	30SEP05	1,010	LOE	33,116.06	142,129.00					
181.120	PPPL EM LOE FY06	03OCT05*	03OCT05*	250*	02OCT06	02OCT06	760		0.00	220,592.53					
181.121	PPPL EM LOE FY06	02OCT06*	02OCT06*	207*	31JUL07	31JUL07	554		0.00	179,340.00					
181.220	HP Coverage in the TFTR TC LOE FY06	03OCT05*	03OCT05*	250*	02OCT06	02OCT06	760		0.00	144,966.02					
Job: 1803- FP Assy Toolg/Constructability-BROWN															
VV Prep Station															
1803-1.01	Concept definition and requirements	08NOV04*	03JAN05	10	19NOV04	14JAN05	194		0.00	16,352.40					
1803-1.02	VV Support Fixture - model design& drawing detai	22NOV04	17JAN05	15	14DEC04	04FEB05	194		0.00	13,901.12					
1803-1.04	Metrology -sightline layout metrology support	15DEC04*	07FEB05	15	04FEB05	25FEB05	211		0.00	25,989.20					
1803-1.05	Structural / Seismic Analysis check	03JAN05*	15MAR05*	10	14JAN05	28MAR05	190		0.00	13,431.20					
1803-1.06	Design review PDR VV Prep Station	17JAN05*	15MAR05*	2	17JAN05	16MAR05	168		0.00	2,014.68					
1803-1.09	Safety Review documentation / presentation	24JAN05	14APR05	10	04FEB05	27APR05	168		0.00	2,686.24					
1803-1.061	Design review FDR VV Prep Station	07FEB05*	28APR05*	2	07FEB05	29APR05	168		0.00	2,014.68					
1803-1.07	Design check and sign-off	08FEB05*	02MAY05*	5	14FEB05	06MAY05	168		0.00	3,523.44					
1803-1.10	Fab / Design Review - follow-up activities	08FEB05	02MAY05*	10	21FEB05	13MAY05	219		0.00	6,872.24					

Activity ID	Activity Description	Baseline Start	Forecast Start	Orig Dur	Baseline Finish	Forecast Finish	Total Float	PCTC	Earned value cost (BCWP)	Budget	ETC ADD'L COST	FY						
												FY05	FY06	FY07	FY08			
1803-1.08	Prep & Issue Spec,dwgs,and requisition	15FEB05*	09MAY05*	1	15FEB05	09MAY05	168		0.00	2,686.24								
1803-1.081	Procurement Lead Time and Award	16FEB05	10MAY05	55	03MAY05	27JUL05	168		0.00	0.00								
1803-1.12	FAB - VV support Fixture	03OCT05*	03OCT05*	65	18NOV05	30DEC05	129		0.00	12,900.00								
1803-1.13	FAB VV Prep Station Platform	03OCT05*	03OCT05*	65	18NOV05	30DEC05	129		0.00	6,450.00								
1803-1.14	FAB VV Prep Station metrology stands	03OCT05*	03OCT05*	65	18NOV05	30DEC05	129		0.00	6,450.00								
Half Period Assembly																		
1803-2.01	Concept definition and requirements	24FEB05*	07MAR05*	7	09MAR05	15MAR05	317		0.00	16,352.40								
1803-2.02	MC Holding Fixture 1 - model design and drawing	10MAR05	16MAR05	18	23MAR05	08APR05	317		0.00	7,622.12								
1803-2.03	MC Assembly Fixture 2- design & drawing details	24MAR05	16MAR05	18	12MAY05	08APR05	317		0.00	14,572.68								
1803-2.04	Metrology - sightline layout design details metr	15APR05	14APR05*	15	12MAY05	04MAY05	1,120		0.00	18,445.40								
1803-2.05	Structural / Seismic Analysis check	07APR05	15MAR05*	10	20APR05	28MAR05	295		0.00	13,431.20								
1803-2.06	PDR Half Period Assy	21APR05*	29MAR05*	1	21APR05	29MAR05	295		0.00	2,014.68								
1803-2.09	Safety Review documentation / presentation	29APR05	27APR05	10	12MAY05	10MAY05	295		0.00	2,686.24								
1803-2.061	FDR Half Period Assy	13MAY05	11MAY05*	1	13MAY05	11MAY05	295		0.00	2,014.68								
1803-2.10	Fab / Design Review - follow-up activities	16MAY05	12MAY05	10	27MAY05	25MAY05	1,105		0.00	6,872.24								
1803-2.07	Design check and sign-off	16MAY05	12MAY05	5	20MAY05	18MAY05	295		0.00	3,523.44								
1803-2.08A	Prep & Issue Spec,dwgs,and requisition	20MAY05	18MAY05	1	20MAY05	18MAY05	295		0.00	0.00								
1803-2.08	Procurement Lead Time and Award	23MAY05	19MAY05	55	09AUG05	05AUG05	295		0.00	2,686.24								
1803-2.11	Fab MC HP Assy Fixtures (2)	03OCT05*	03OCT05*	65	11JAN06	11JAN06	255		0.00	25,800.00								
1803-2.12	Fab MC MC HP Assy Metrology support stands (2)	03OCT05*	03OCT05*	65	11JAN06	11JAN06	255		0.00	12,900.00								
MC Installation																		
1803-3.01	Concept definition and requirements	01NOV04*	25OCT04A	5	05NOV04	29OCT04A		100	10,901.60	10,901.60								
1803-3.02	MC Turning Fixture and base - model design and d	08NOV04	15NOV04A	38*	14DEC04	17JAN05	257	75	10,929.51	14,572.68								
1803-3.03	MC Gantry Crane - model design and drawing detai	15DEC04	29NOV04A	30*	12JAN05	17JAN05	257	90	13,115.41	14,572.68								
1803-3.04	VV support stand - model design and drawing deta	04JAN05*	29NOV04A	30*	17JAN05	17JAN05	395	50	4,521.78	9,043.56								
1803-3.05	Platform - design and drawing details	08FEB05*	04FEB05*	7	21FEB05	14FEB05	382		0.00	9,379.34								
1803-3.06	Metrology - sightline layout design details metr	09NOV04*	21JAN05*	20	24FEB05	17FEB05	379		0.00	15,087.60								
1803-3.082	* PDR * Turning Fixture,base&gantry crane	23DEC04*	21JAN05*	1	23DEC04	21JAN05	253		0.00	1,007.34								
1803-3.084	Industry Info Meeting		28JAN05*	1	28JAN05	28JAN05	1,188		0.00	0.00								
1803-3.083	* FDR * Turning Fixture,base&gantry crane	15FEB05	04MAR05*	1	15FEB05	04MAR05	224		0.00	1,007.34								
1803-3.09	Design check and sign-off	28FEB05	07MAR05*	5	04MAR05	11MAR05	224		0.00	3,523.44								
1803-3.10A	Prep & Issue Spec,dwgs,and req-turning fixt	01JUL05	14MAR05	1	01JUL05	14MAR05	224		0.00	0.00								
1803-3.10	Procurement lead time turning fixt,base&gantry	05JUL05*	15MAR05	55	20SEP05	31MAY05	224		0.00	10,073.40								
1803-3.15	Vendor Design MC Turning fixture & Base	03OCT05*	01JUN05	65	26APR06	31AUG05	224		0.00	69,450.00								
1803-3.15B	FDR - MC Turning fixture & Base		01SEP05	15	21SEP05	21SEP05	224		0.00	0.00								
1803-3.07	Structural / Seismic Analysis check	25JAN05	01SEP05*	20	14FEB05	28SEP05	1,017		0.00	26,862.40								
1803-3.15C	Fabricate - MC Turning fixture & Base		03OCT05*	130	12APR06	12APR06	217		0.00	83,850.00								
1803-3.15A	Fabricate - MC Gantry Crane	03OCT05*	03OCT05*	130	26APR06	12APR06	217		0.00	15,480.00								
1803-3.08	** PDR ** Platform & Support Stands	17JAN05*	14FEB05*	1	17JAN05	14FEB05	382		0.00	1,007.34								
1803-3.12	Safety Review documentation / presentation	01FEB05*	01FEB05*	10	14FEB05	14FEB05	382		0.00	2,686.24								

Activity ID	Activity Description	Baseline Start	Forecast Start	Orig Dur	Baseline Finish	Forecast Finish	Total Float	PCTC	Earned value cost (BCWP)	Budget	ETC ADD'L COST	FY05	FY06	FY07	FY08
1803-7.02	Develop and maintain concept definition document	01NOV04*	01NOV04A	230*	30SEP05	30SEP05	1,015	LOE	1,621.82	10,073.40					
1803-7.03	Develop and maintain assembly plan document	01NOV04*	01NOV04A	230*	30SEP05	30SEP05	1,015	LOE	2,162.42	13,431.20					
1803-7.04	Mike Cole's FY05 on-site involvement in assembly	01NOV04*	01NOV04A	230*	30SEP05	30SEP05	1,015	LOE	3,792.90	23,558.40					
1803-8	Metrology Support	01NOV04*	01NOV04A	230*	30SEP05	30SEP05	1,015	LOE	6,487.27	40,293.60					
Tooling Design & Fabrication															
713A.040	General procurements	03OCT05*	03OCT05*	498	01OCT07	28SEP07	512		0.00	9,806.25					
713A.050	Welding tools, materials & equip	03OCT05*	03OCT05*	498	01OCT07	28SEP07	512		0.00	9,806.25					
713A.060	Instl He gas piping from NSTX to D-site tc	02OCT06*	02OCT06*	65	10JAN07	10JAN07	696		0.00	43,287.80					
Job: 1804-FP Assy Measurement Sys-RAFTOPOULOS															
Metrology															
740.045	Purchase- second Faro Arm PE005330	01OCT04*	01OCT04A	102	03MAR05	29OCT04A		100	76,395.00	76,395.00					
740.050	Purchase- targets [A9]	01JUL05*	01JUL05*	130	12JAN06	12JAN06	944		0.00	34,725.00					
740.020	Facility Prep	03OCT05*	03OCT05*	95	22FEB06	22FEB06	915		0.00	60,857.04					
740.035	Deliver Metrology Software	01DEC04*	30SEP05*	1	21FEB05	30SEP05	1,010		0.00	0.00					
740.012	Metrology Requirements coordination		01OCT04A	249*		30SEP05	1,010	LOE	14,547.34	62,434.93	\$98,688				
1808 - TF/Mod Coil Sub-Assembly-VIOLA															
TF Coil Sub-assembly															
722.010	Receive/Inspect TF & PF Coils	07DEC05*	07DEC05*	276*	19JAN07	19JAN07	689		0.00	79,114.78					
184-100	Assemble 3 TF coils&structure -Left-Period #1	13JUN06	13JUN06	10	26JUN06	26JUN06	225		0.00	34,838.40					
184-105	Assemble 3 TF coils&structure -Right -Period #1	27JUN06	27JUN06	10	12JUL06	11JUL06	225		0.00	34,838.40					
184-110	Assemble 3 TF coils&structure -Left-Period #2	13JUL06	12JUL06	10	26JUL06	25JUL06	225		0.00	34,838.40					
184-115	Assemble 3 TF coils&structure -Right -Period #2	27JUL06	26JUL06	10	09AUG06	08AUG06	225		0.00	34,838.40					
184-120	Assemble 3 TF coils&structure -Left -Period #3	13SEP06	14SEP06	10	26SEP06	27SEP06	200		0.00	34,838.40					
184-125	Assemble 3 TF coils&structure -Right -Period #3	04DEC06	01DEC06	10	15DEC06	14DEC06	156		0.00	36,581.60					
Stage 2 MC subassy FP#1															
S2P1-100	Assemble Mod-Coils a1.b1,c1 FP 1 left	10APR06	17APR06	27	16MAY06	23MAY06	188		0.00	65,544.96					
S2P1-200	Assemble Mod-Coils a2.b2,c2 FP 1 right	07AUG06	25AUG06	27	13SEP06	02OCT06	105		0.00	65,666.46					
Stage 2 MC subassy FP#2															
S2P2-100	Assemble Mod-Coils a3.b3,c3 FP 2 left	11SEP06*	13SEP06*	27	17OCT06	19OCT06	113		0.00	67,245.95					
S2P2-200	Assemble Mod-Coils a4.b4,c4 FP 2 right *2 shift*	25OCT06	14NOV06	14	13NOV06	05DEC06	91		0.00	68,825.44					
Stage 2 MC subassy FP#3															
S2P3-100	Assemble Mod-Coils a5.b5,c5 FP 3 left*2 shift*	10NOV06	28NOV06	14	01DEC06	15DEC06	104		0.00	68,825.44					
S2P3-200	Assemble Mod-Coils a6.b6,c6 FP 3 right*2 shift*	08DEC06	12DEC06	14	04JAN07	08JAN07	103		0.00	68,825.44					
Job:1810 - Field Period Assembly-VIOLA															
Stage 1 VV Prep FP#1															
S1P1-000	LOE support staff for FP assemblies	21NOV05	03JAN06	347*	26APR07	16MAY07	91		0.00	298,274.35					
S1P1-101	Receive VV and inspect	21NOV05	03JAN06	4	28NOV05	06JAN06	127		0.00	7,787.52					
S1P1-102	Mount VV on VV Prep fixture (top side up)	29NOV05	09JAN06	1	29NOV05	09JAN06	127		0.00	973.44					
S1P1-103	Establish metrology setting; align VV base	30NOV05	10JAN06	3	02DEC05	12JAN06	127		0.00	5,840.64					
S1P1-106	Attach studs, coolant lines and insulation on to	05DEC05	13JAN06	8	14DEC05	24JAN06	127		0.00	15,575.04					



Activity ID	Activity Description	Baseline Start	Forecast Start	Orig Dur	Baseline Finish	Forecast Finish	Total Float	PCTC	Earned value cost (BCWP)	Budget	ETC ADD'L COST	FY05	FY06	FY07	FY08
S4P3-114	Prepare Field Period for shipment	23APR07	11MAY07	2	24APR07	14MAY07	91		0.00	4,088.64					EM/TB =48hr ;
S4P3-115	Transfer completed assy to C-site test cell	25APR07	15MAY07	2	26APR07	16MAY07	91		0.00	6,814.40					EM/TB =80hr ;

19 - Stellarator Core Management and Integration

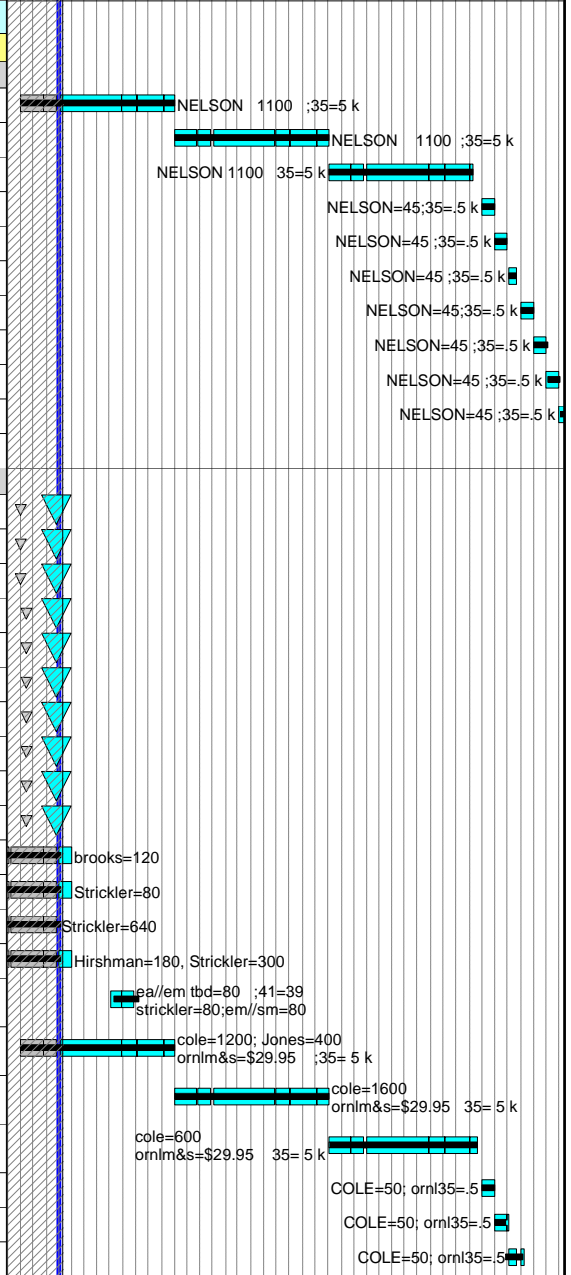
Job: 1901 - Stellarator Core Mngt&Integr-NELSON

191 - Stellarator Core Management & Oversight

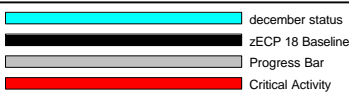
0191-5	LOE-FY05 WBS 191	01OCT04*	01OCT04A	249*	30SEP05	30SEP05	1,010	LOE	39,762.38	170,654.00					
0191-6	LOE-FY06 WBS 191	03OCT05*	03OCT05*	250*	02OCT06	02OCT06	526	LOE	0.00	170,673.65					
0191-6X	LOE-FY07 WBS 191	03OCT06*	03OCT06*	234	10SEP07	10SEP07	526	LOE	0.00	179,301.00					
0191-91	LOE-FY06 WBS 191 1 mo SO	01OCT07*	01OCT07*	22	30OCT07	30OCT07	346	LOE	0.00	7,877.20					
0191-92	LOE-FY06 WBS 191 1 mo SO	31OCT07*	31OCT07*	21	28NOV07	28NOV07	346	LOE	0.00	7,877.20					
0191-93	LOE-FY06 WBS 191 1 mo SO	03DEC07*	03DEC07*	15	21DEC07	21DEC07	346	LOE	0.00	7,877.20					
0191-94	LOE-FY06 WBS 191 1 mo SO	02JAN08*	01JAN08*	22	31JAN08	30JAN08	346	LOE	0.00	7,877.20					
0191-95	LOE-FY06 WBS 191 1 mo SO	01FEB08*	31JAN08*	22	03MAR08	29FEB08	346	LOE	0.00	7,877.20					
0191-96	LOE-FY06 WBS 191 1 mo SO	04MAR08*	03MAR08*	22	02APR08	01APR08	346	LOE	0.00	7,877.20					
0191-97	LOE-FY06 WBS 191 1 mo SO	03APR08*	02APR08*	21	01MAY08	30APR08	346	LOE	0.00	7,877.20					
0191-98	LOE-FY06 WBS 191 1 mo SO	02MAY08*	01MAY08*	21	02JUN08	30MAY08	346	LOE	0.00	7,877.20					

192 - Stellarator Core Integration & Analysis

192-4.1	Self consistent models/dwgs f/ Mod Coil & VV FDR			0	30SEP04*	23DEC04*	1,201	100	0.00	0.00					
192-4.2	Self consistent models/dwgs Conv Coils&sprt strc			0	30SEP04*	23DEC04*	1,201		0.00	0.00					
192-4.4	Stellarator Core Assy dwgs & assy sequence			0	30SEP04*	23DEC04*	1,201		0.00	0.00					
192-5.1	VV Helium Line Models			0	15OCT04*	23DEC04*	1,201		0.00	0.00					
192-5.2	Mod Coil LN2 Lines Layouts			0	15OCT04*	23DEC04*	1,201		0.00	0.00					
192-5.3	Mod Coil Leads Layouts			0	15OCT04*	23DEC04*	1,201		0.00	0.00					
192-5.4	PF Coil Leads & Services Layouts			0	15OCT04*	23DEC04*	1,201		0.00	0.00					
192-5.5	TF Coil leads & Services Layouts			0	15OCT04*	23DEC04*	1,201		0.00	0.00					
192-5.6	External Trim Coil Leads /services Layouts			0	15OCT04*	23DEC04*	1,201		0.00	0.00					
192-6.3	Best fit for mod coil assy on winding measuremen			0	15OCT04*	23DEC04*	1,201		0.00	0.00					
192-6.01	Document coil tolerance and trim coil requiremen	01MAR04A	01MAR04A	230*	03JAN05	31JAN05	1,187	95	18,601.33	19,580.35					
192-6.02	Check critical coil tolerance calculations.	01APR04A	01APR04A	207*	03JAN05	31JAN05	1,187	50	5,430.78	10,861.56					
192-6.03	Method for determining current center	01FEB04A	01FEB04A	234*	03JAN05	30DEC04A		100	85,368.48	85,368.48					
192-6.06	Coil positions to minimize islands.	02FEB04A	02FEB04A	250*	03JAN05	31JAN05	1,187	70	45,209.40	64,584.86					
192-6.031	Demo Method for current center on TRC	12MAY05	02MAY05	40	08JUL05	27JUN05	1,083		0.00	88,519.19					
0192-5	LOE-FY05 WBS 192	01OCT04*	01OCT04A	249*	30SEP05	30SEP05	1,010	LOE	63,284.23	271,606.12					
0192-6	LOE-FY06 WBS 192	03OCT05*	03OCT05*	250	03OCT06	02OCT06	518	LOE	0.00	272,283.11					
0192-6X	LOE-FY06 WBS 192	04OCT06*	03OCT06*	242	21SEP07	20SEP07	518	LOE	0.00	135,038.20					
0192-91	LOE-F1 mo SO	01OCT07*	01OCT07*	22	30OCT07	30OCT07	338	LOE	0.00	8,285.04					
0192-92	LOE-F1 mo SO	31OCT07*	31OCT07*	22	27NOV07	03DEC07	338	LOE	0.00	8,285.04					
0192-93	LOE-F1 mo SO	28NOV07*	04DEC07*	22	04JAN08	10JAN08	338	LOE	0.00	8,285.04					



Run Date 19JAN05 13:33



0412

NCSX
ECP 18
January 1 Status

Sheet 28 of 40

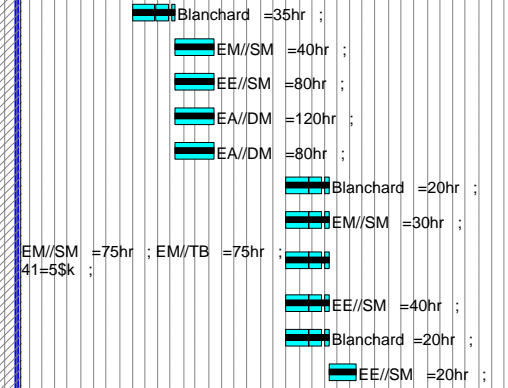
Activity ID	Activity Description	Baseline Start	Forecast Start	Orig Dur	Baseline Finish	Forecast Finish	Total Float	PCTC	Earned value cost (BCWP)	Budget	ETC ADD'L COST	FY05	FY06	FY07	FY08
0192-94	LOE-F1 mo SO	07JAN08*	11JAN08*	22	01FEB08	11FEB08	338	LOE	0.00	8,285.04					COLE=50; orn135=5
0192-95	LOE-F1 mo SO	04FEB08*	12FEB08*	22	03MAR08	12MAR08	338	LOE	0.00	8,285.04					COLE=50; orn135=5
0192-96	LOE-F1 mo SO	04MAR08*	13MAR08*	22	01APR08	11APR08	338	LOE	0.00	8,285.04					
0192-97	LOE-F1 mo SO	02APR08*	14APR08*	21	29APR08	12MAY08	338	LOE	0.00	8,285.04					
0192-98	LOE-F1 mo SO	30APR08*	13MAY08*	21	28MAY08	11JUN08	338	LOE	0.00	8,285.04					

2 - Plasma Heating, Fueling & Vac Systems

21 - Fueling Systems

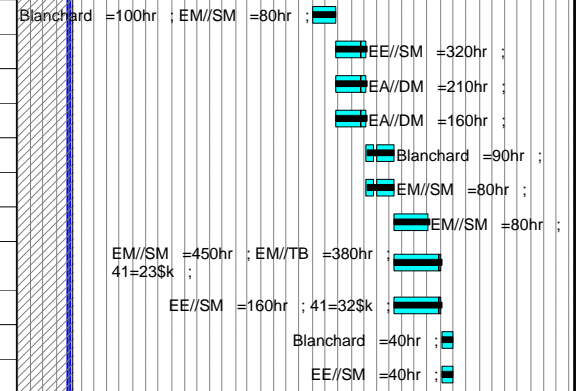
ECP 16 October 2004

21-10	Eng. Work Planning and Design	03OCT05*	03OCT05*	65	11JAN06	11JAN06	310		0.00	5,978.00					
21-15	Design Gas Handling Hardware	12JAN06	12JAN06	65	12APR06	12APR06	310		0.00	4,440.00					
21-20	Design PLC Controls	12JAN06*	12JAN06*	65	12APR06	12APR06	310		0.00	9,247.20					
21-25	Electrical Drafting for pumping system	12JAN06*	12JAN06*	65	12APR06	12APR06	310		0.00	12,806.40					
21-30	Drafting	12JAN06*	12JAN06*	65	12APR06	12APR06	310		0.00	8,537.60					
21-35	Eng. Work Planning and Design during fab	02OCT06*	02OCT06*	65	10JAN07	10JAN07	190		0.00	3,586.80					
21-40	Fabrication/Install Hardware	02OCT06*	02OCT06*	65	10JAN07	10JAN07	190		0.00	3,496.50					
21-45	Fabrication/installation	02OCT06*	02OCT06*	65	10JAN07	10JAN07	190		0.00	21,754.75					
21-55	Install PLC Controls	02OCT06*	02OCT06*	65	10JAN07	10JAN07	190		0.00	4,854.80					
21-60	Integrated Systems Testing/Eng	02OCT06*	02OCT06*	65	10JAN07	10JAN07	190		0.00	3,586.80					
21-65	Integrated Systems Testing/Tech Support	11JAN07*	11JAN07*	45	14MAR07	14MAR07	190		0.00	2,427.40					



22 - Torus Vacuum Pumping Systems

22-25	Eng. Work Planning and Design	01AUG06*	01AUG06*	40	26SEP06	25SEP06	121		0.00	25,960.00					
22-30	Design PLC based control system	27SEP06	26SEP06*	50	07DEC06	06DEC06	161		0.00	38,690.43					
22-35	Electrical Drafting for pumping system	27SEP06	26SEP06*	50	07DEC06	06DEC06	181		0.00	23,442.89					
22-40	Drafting	27SEP06	26SEP06*	50	07DEC06	06DEC06	121		0.00	17,861.25					
22-45	Eng. Work Planning and Design during fab	08DEC06*	07DEC06*	40	09FEB07	08FEB07	141		0.00	16,140.60					
22-50	Perform maint. & repair of pmpg sys	08DEC06*	07DEC06*	40	09FEB07	08FEB07	121		0.00	9,324.00					
22-55	Repair and Calibration of vac instrumentation	12FEB07*	09FEB07*	60	04MAY07	03MAY07	141		0.00	9,324.00					
22-60	Fabrication/installation	12FEB07*	09FEB07*	80	04JUN07	01JUN07	121		0.00	115,290.90					
22-65	Fab PLC conrols	12FEB07*	09FEB07*	80	04JUN07	01JUN07	121		0.00	61,819.20					
22-70	Integrated Systems Testing/Eng	05JUN07*	04JUN07*	20	02JUL07	29JUN07	121		0.00	7,173.60					
22-75	Integrated Systems Testing/Tech Support	05JUN07*	04JUN07*	20	02JUL07	29JUN07	121		0.00	4,854.80					



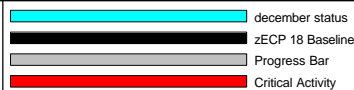
3 - Diagnostics

31 - Magnetic Diagnostics

Job: 3101 Magnetic Diagnostics

310-005	Finalize Loop Geometry			0	17JAN05*	17JAN05*	977		0.00	0.00					
310-006	Magnetics CDR			0	17JAN05*	17JAN05*	339		0.00	0.00					

Run Date 19JAN05 13:33



0412

NCSX
ECP 18
January 1 Status

Sheet 29 of 40

Activity ID	Activity Description	Baseline Start	Forecast Start	Orig Dur	Baseline Finish	Forecast Finish	Total Float	PCTC	Earned value cost (BCWP)	Budget	ETC ADD'L COST	FY05	FY06	FY07	FY08
310-010	Design Mag Diagnostics	22APR05*	22APR05*	69	29JUL05	29JUL05	909		0.00	45,197.16					
310-020	Design other ex-vessel sensors	29APR05*	29APR05*	69	05AUG05	05AUG05	266		0.00	155,621.00					
310-011	Mag diag and Coil Sensor FDR			0	05AUG05	05AUG05	904		0.00	0.00					
310-025	Procure matl for ex-vsl sensors	03OCT05*	03OCT05*	65	11JAN06	11JAN06	227		0.00	39,290.90					
310-026	Install ex-vessel sensors on coils	16JAN06	16JAN06*	105	12JUN06	12JUN06	225		0.00	39,916.48					
310-015	Fabricate Magnetics	03OCT05*	03OCT05*	40	29NOV05	29NOV05	865		0.00	65,591.80					
310-016	Install terminal boxes and terminate	15DEC05	03JAN06*	105	18MAY06	30MAY06	847		0.00	31,127.25					
310-030	Design & Fab Magnetic integrators	13SEP05	22SEP05*	65	14DEC05	23DEC05	952		0.00	37,138.36					

36 - Edge and Divertor Diagnostics

361-001	Design Visible Camera sys	02OCT06*	02OCT06*	40	28NOV06	28NOV06	128		0.00	11,821.60					
361-015	Fab/Assy/Installation Visible Camera	08DEC06*	08DEC06*	130	18JUN07	18JUN07	121		0.00	31,043.60					

38 - Electron Beam (EB) Mapping

380-010	Designe-Beam Probe,Fluor. Screen	02OCT06*	02OCT06*	40	28NOV06	28NOV06	156		0.00	44,346.80					
380-015	Fab & Install Beam probe	15JAN07*	15JAN07*	102	06JUN07	06JUN07	129		0.00	246,231.50					

39 - Diagnostics Integration

Job: 3901 - Diagnostics sys Integration-JOHNSON

390-120	Update port map&revise diag port assignments			0	30SEP04*	23DEC04*	1,201	90	0.00	0.00					
390-130	Rvw status of existing ICD's w/VV & Mod Coils			0	30SEP04*	23DEC04*	1,201	100	0.00	0.00					
390-140	Write ICD's-Define external space for diagnostic			0	30SEP04*	23DEC04*	1,201	50	0.00	0.00					
390-150	Write ICD's-Define space f/racks in cntrl rm			0	30SEP04*	23DEC04*	1,201	50	0.00	0.00					
390-170	Develop space envelopes for SXR			0	30SEP04*	23DEC04*	1,201	70	0.00	0.00					
390-180	Hold CDR's co-wound mag sensors&ext saddle			0	30SEP04*	23DEC04*	1,201		0.00	0.00					
390-015	LOE Support FY05 **reduced scope	01OCT04*	01OCT04A	249*	30SEP05	30SEP05	1,010	LOE	15,681.07	67,300.71					
390-020	LOE Support FY06	03OCT05*	03OCT05*	249*	29SEP06	29SEP06	761		0.00	68,631.75					

4 - Electrical Power Systems

41 - AC Power

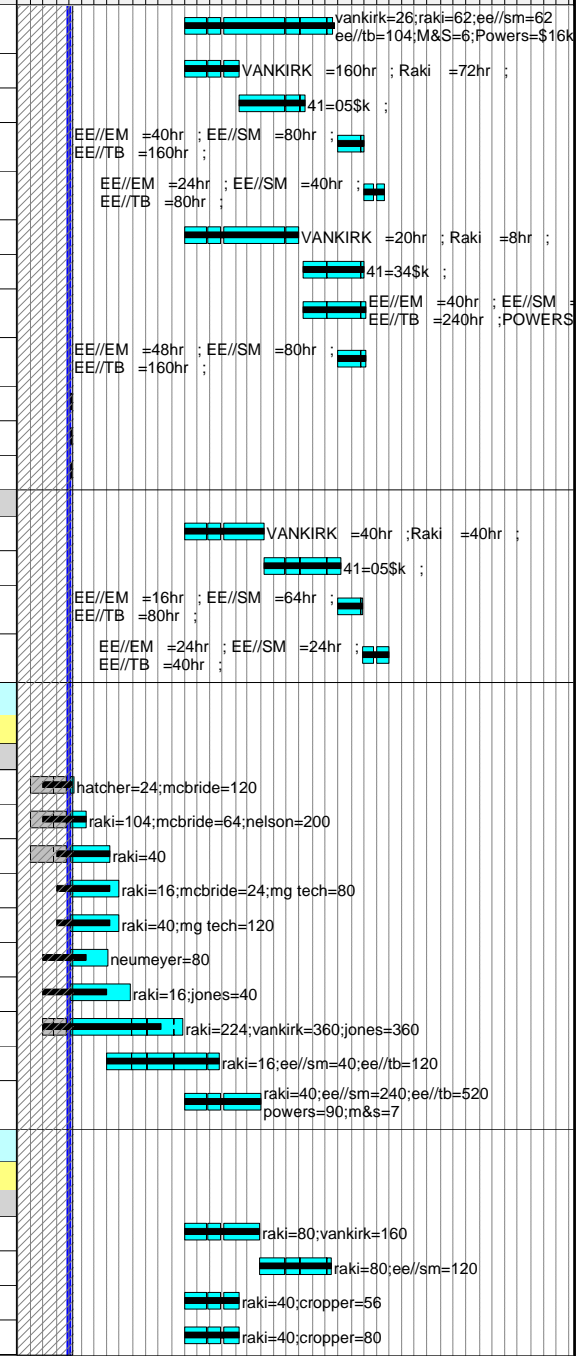
Job: 4101 - AC Power-RAMAKRISHNAN

411 - Auxiliary AC Power Systems

4101-100.1	Prepare Preliminary One line diagram	03OCT05*	03OCT05*	173	13JUN06	13JUN06	837		0.00	1,007.93					
------------	--------------------------------------	----------	----------	-----	---------	---------	-----	--	------	----------	--	--	--	--	--

Run Date	19JAN05 13:33		0412	NCSX ECP 18 January 1 Status	Sheet 30 of 40
© Primavera Systems, Inc.					

Activity ID	Activity Description	Baseline Start	Forecast Start	Orig Dur	Baseline Finish	Forecast Finish	Total Float	PCTC	Earned value cost (BCWP)	Budget	ETC ADD'L COST	FY05	FY06	FY07	FY08
411-1-100	Ex-Test cell AC pwr-Reactivate& new instl	03OCT05*	03OCT05*	241	20SEP06	19SEP06	769		0.00	56,876.86					
411-2-2	Grounding-Dsn	03OCT05*	03OCT05*	86	09FEB06	09FEB06	325		0.00	28,965.28					
411-2-4	Grounding-Procure	10FEB06*	10FEB06*	107	13JUL06	12JUL06	325		0.00	6,450.00					
411-2-6	Grounding-Install	02OCT06*	02OCT06*	43	01DEC06	01DEC06	226		0.00	63,205.80					
411-2-8	Grounding-Commission	04DEC06*	04DEC06*	29	19JAN07	19JAN07	226		0.00	15,734.00					
411-3-2	Test Cell AC Power Distr-Dsn	03OCT05*	03OCT05*	186	30JUN06	30JUN06	361		0.00	3,455.52					
411-3-4	Test Cell AC Power Distr-Procure(pnl's & xfrmrs)	10JUL06*	10JUL06*	101	30NOV06	30NOV06	256		0.00	44,354.85					
411-3-6	Test Cell AC Power Distr-Install	10JUL06*	10JUL06*	104	05DEC06	05DEC06	253		0.00	31,080.38					
411-3-8	Test Cell AC Power Distr-Commission	02OCT06*	02OCT06*	45	05DEC06	05DEC06	253		0.00	31,468.00					
411-4-2	Standby Power for Cryo Sys -Dsn		04JAN05	0		23DEC04	1,201		0.00	0.00					
411-4-4	Standby Power for Cryo Sys -Procure		04JAN05	0		23DEC04	1,201		0.00	0.00					
411-4-6	Standby Power for Cryo Sys -Install		04JAN05	0		23DEC04	1,201		0.00	0.00					
412 - Experimental AC Power Systems															
412-1-2	D-site Pulsed AC Power Distr-Dsn	03OCT05*	03OCT05*	128	10APR06	10APR06	231		0.00	10,874.40					
412-1-4	D-site Pulsed AC Power Distr-Procure	11APR06	11APR06	125	06OCT06	05OCT06	231		0.00	6,455.60					
412-1-6	D-site Pulsed AC Power Distr-Install	02OCT06*	02OCT06*	40	28NOV06	28NOV06	195		0.00	17,259.68					
412-1-8	D-site Pulsed AC Power Distr-Commission	29NOV06	29NOV06	40	31JAN07	31JAN07	195		0.00	10,433.28					
43 - DC Systems															
Job: 4301 - DC Systems-RAMAKRISHNAN															
431 - C-Site DC Systems															
431-200	Condition/spare parts inventory	01NOV04*	01OCT04A	63*	07JAN05	10JAN05	1,196	80	13,989.89	17,487.36					
431-210	Organize & verify documentation	01NOV04*	01OCT04A	86*	09FEB05	10FEB05	1,173	55	24,764.04	45,025.52					
431-215	Document status	01DEC04*	01OCT04A	125*	05APR05	06APR05	1,134	10	647.76	6,477.60					
431-225	Reactivate DF & PEI units	01DEC04*	04JAN05*	84	05APR05	29APR05	1,117		0.00	11,584.80					
431-230	Load	01DEC04*	04JAN05*	84	05APR05	29APR05	1,117		0.00	15,888.00					
431-240	Simulate each of 6 pwr loops in PSCAD	01NOV04*	04JAN05*	65	09FEB05	04APR05	1,136		0.00	12,955.20					
431-250	c-site dc sys DGS dsn documentation	01NOV04*	04JAN05*	100	30MAR05	23MAY05	1,101		0.00	6,777.04					
431-260	Power loop design	01NOV04*	01NOV04A	190	05AUG05	29SEP05	1,011	10	11,162.26	111,622.56					
431-265	Fabricate bus components	01APR05*	01APR05*	185	22DEC05	22DEC05	953		0.00	16,635.86					
431-275	Power cabling & Installation	03OCT05*	03OCT05*	121	30MAR06	30MAR06	448		0.00	201,061.60					
44 - Control and protection Systems															
Job: 4401 - Control & Protection-RAMAKRISHNAN															
441 - Electrical Interlocks															
441-095	Design Interlock sys	03OCT05*	03OCT05*	118	27MAR06	27MAR06	332		0.00	30,286.40					
441-097	Install Interlock sys	28MAR06	28MAR06	119	14SEP06	13SEP06	332		0.00	27,082.00					
441-100	PLC Specification	03OCT05*	03OCT05*	85	08FEB06	08FEB06	743		0.00	13,078.64					
441-105	Prep Block diagrams	03OCT05*	03OCT05*	85	08FEB06	08FEB06	925		0.00	15,852.80					



Activity ID	Activity Description	Baseline Start	Forecast Start	Orig Dur	Baseline Finish	Forecast Finish	Total Float	PCTC	Earned value cost (BCWP)	Budget	ETC ADD'L COST	FY05	FY06	FY07	FY08
445-2-110	Overload Protect-Design	31OCT05*	31OCT05*	80	01MAR06	01MAR06	910		0.00	70,629.60					
445-2-115	Overload Protect-Fabr 4 chassis 120 mods	06JAN06*	06JAN06*	79	26APR06	26APR06	810		0.00	64,203.36					
445-2-120	Overload Protect-Test 4 units	27APR06	27APR06	20	24MAY06	24MAY06	810		0.00	22,458.40					
445-2-125	Overload Protect-Install & Rack wiring	25MAY06	25MAY06	20	22JUN06	22JUN06	810		0.00	42,010.08					
445-2-130	Overload Protect-Write & perform ISTP	23JUN06	23JUN06	20	24JUL06	21JUL06	810		0.00	22,458.40					
445-2-135	Overload Protect-Documentation	31OCT05	31OCT05	180	24JUL06	21JUL06	810		0.00	23,680.80					
445-2-140	Overload Protection&cabling design,procure instl	01MAY06*	01MAY06*	249	30APR07	27APR07	619		0.00	137,740.28					

45 - Power System Design and Integration

Job: 4501 - Power Sys Dsn & Integr-RAMAKRISHNAN

451 - System Design & Interfaces															
451-0-2	Develop SRD	01OCT04*	04JAN05*	21	29OCT04	01FEB05	1,180		0.00	0.00					
451-3-2	Dwgs,asbuilts -Elect Dsn	03APR06*	03APR06*	499*	31MAR08	31MAR08	389		0.00	157,565.56					
451-2-1	CDR Power system -Dsn	04JAN05*	01DEC04A	68*	15MAR05	15MAR05	1,150	21	8,957.42	42,654.40					
451-2-2	PDR Power system -Dsn	01MAR05*	01MAR05*	69*	06JUN05	06JUN05	1,092		0.00	42,654.40					
451-2-2.1	FDR C-Site	16MAY05*	16MAY05*	64*	15AUG05	15AUG05	1,043		0.00	31,990.80					
451-6-2	FDR C-Site -Cabling	16MAY05*	16MAY05*	64*	15AUG05	15AUG05	1,043		0.00	31,990.80					
451-4-2	FDR AC auxiliaries & grounding-Dsn	05JUL06*	03JUL06*	45	06SEP06	05SEP06	779		0.00	10,874.40					
451-1-2	Calculations-Dsn	01APR05*	01APR05*	498	30MAR07	29MAR07	640		0.00	54,083.71					
452 - Electrical Systems Support															
452-1-2	Diagnostics AC Power Distr-Dsn	03OCT05*	03OCT05*	72*	20JAN06	20JAN06	330		0.00	81,512.00					
452-1-4	Diagnostics AC Power Distr-Procure	05OCT05*	05OCT05*	248	03OCT06	02OCT06	257		0.00	1,290.14					
452-1-6	Diagnostics AC Power Distr-Install	02OCT06*	02OCT06*	105	07MAR07	07MAR07	153		0.00	77,322.40					
452-1-8	Diagnostics AC Power Distr-Commission	13MAR07*	13MAR07*	37	02MAY07	02MAY07	153		0.00	30,080.80					
452-2-2	Diagnostics sensor cabling-Dsn	03OCT05*	03OCT05*	61*	05JAN06	05JAN06	381		0.00	23,680.80					
452-2-4	Diagnostics sensor cabling-Procure	05OCT05*	05OCT05*	240	21SEP06	20SEP06	265		0.00	2,580.00					
452-2-6	Diagnostics sensor cabling-Install	02OCT06*	02OCT06*	65	10JAN07	10JAN07	193		0.00	21,480.64					
452-2-8	Diagnostics sensor cabling-Commission	11JAN07*	11JAN07*	40	07MAR07	07MAR07	193		0.00	6,016.16					
453 - System Testing (PTP's)															
453-1-2	New Procedures	06OCT05*	06OCT05*	90	20FEB06	20FEB06	301		0.00	65,246.40					
453-1-4	Preop Testing-Procure test equip	02OCT06*	02OCT06*	160	23MAY07	23MAY07	145		0.00	33,125.00					
453-1-8	Testing PTPs, ISTPs	04JAN07*	04JAN07*	100	23MAY07	23MAY07	145		0.00	207,122.72					

5 - Central I&C Systems

51 - TCP/IP Infrastructure Systems

51 - TCP/IP Infrastructure Systems															
51-10	Preliminary Design (Title I)	21AUG06*	21AUG06*	45	23OCT06	23OCT06	214		0.00	6,212.12					
51-20	Final Network Design (Title II)	24OCT06	24OCT06	20	20NOV06	20NOV06	214		0.00	6,408.80					
51-30	Installation, Testing, Documentation (Title III)	21NOV06*	21NOV06*	120	17MAY07	17MAY07	214		0.00	252,039.30					

Run Date 19JAN05 13:33

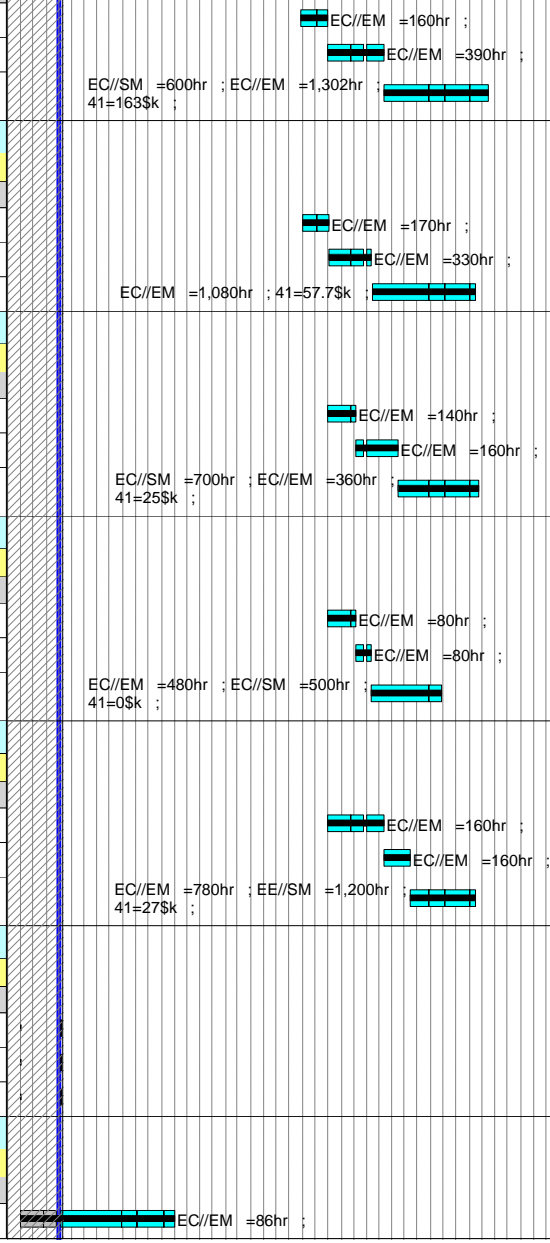


0412

NCSX
ECP 18
January 1 Status

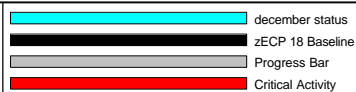
Sheet 33 of 40

Activity ID	Activity Description	Baseline Start	Forecast Start	Orig Dur	Baseline Finish	Forecast Finish	Total Float	PCTC	Earned value cost (BCWP)	Budget	ETC ADD*L COST	FY05	FY06	FY07	FY08
52 - Central Instrumentation & Control															
52-10	Preliminary Design (Title I)	28JUL06*	28JUL06*	45	29SEP06	29SEP06	110		0.00	24,414.40					
52-20	Final Design (Title II)	02OCT06*	02OCT06	87	09FEB07	09FEB07	110		0.00	62,485.80					
52-30	Installation, Testing, Documentation (Title III)	12FEB07*	12FEB07*	173	15OCT07	15OCT07	110		0.00	483,884.73					
53 - Data Acquisition & Facility Computing															
53-10	Preliminary Design (Title I)	01AUG06*	01AUG06*	45	03OCT06	03OCT06	130		0.00	25,997.95					
53-20	Final Design (Title II)	04OCT06	04OCT06	65	12JAN07	12JAN07	130		0.00	52,872.60					
53-30	Coding, Configuration, Testing (Title III)	15JAN07	15JAN07	173	17SEP07	17SEP07	130		0.00	249,490.10					
54 - Facility Timing & Synchronization															
54-10	Preliminary Design (Title I)	02OCT06*	02OCT06*	45	05DEC06	05DEC06	125		0.00	22,430.80					
54-20	Final Design (Title II)	06DEC06	06DEC06	65	14MAR07	14MAR07	125		0.00	25,635.20					
54-30	Installation, Testing, Documentation (Title III)	15MAR07	15MAR07	135	24SEP07	24SEP07	125		0.00	158,726.20					
55 - Real Time Plasma & Power Supply Control Sys															
55-10	Preliminary Design (Title I)	02OCT06*	02OCT06*	45	05DEC06	05DEC06	185		0.00	12,817.60					
55-20	Final Design (Title II)	06DEC06	06DEC06	20	10JAN07	10JAN07	185		0.00	12,817.60					
55-30	Installation, Testing, Documentation (Title III)	11JAN07	11JAN07	120	28JUN07	28JUN07	185		0.00	125,610.60					
56 - Central Safety Interlock Systems															
56-10	Preliminary Design (Title I)	02OCT06*	02OCT06*	87	09FEB07	09FEB07	130		0.00	25,635.20					
56-20	Final Design (Title II)	12FEB07	12FEB07	45	13APR07	13APR07	130		0.00	25,635.20					
56-30	Installation, Testing, Documentation (Title III)	16APR07	16APR07	108	17SEP07	17SEP07	130		0.00	306,390.60					
57 - Control Room Facility															
57-10	Preliminary Design (Title I)	01OCT04	04JAN05	0	30SEP04	23DEC04	1,201		0.00	0.00					
57-20	Final Design (Title II)	01OCT04	04JAN05	0	30SEP04	23DEC04	1,201		0.00	0.00					
57-30	Installation, Testing, Documentation (Title III)	01OCT04	04JAN05	0	30SEP04	23DEC04	1,201		0.00	0.00					
58 - Central I&C management and Integration															
Job: 5801 -Central I&C Integr & Oversight-OLIARO															
51-02	FY05 LOE support	01OCT04*	01OCT04A	249*	30SEP05	30SEP05	1,010	LOE	3,005.70	12,900.00					



Activity ID	Activity Description	Baseline Start	Forecast Start	Orig Dur	Baseline Finish	Forecast Finish	Total Float	PCTC	Earned value cost (BCWP)	Budget	ETC ADD*L COST	FY05	FY06	FY07	FY08
6 - Facility Systems															
61 - Water Systems															
611 - C-Site Cooling System															
615.011	Engr recommissioning of C-Site Water systems	02OCT06*	02OCT06*	40	28NOV06	28NOV06	213		0.00	10,401.72					
615.021	Replace valves, resins, filters	29NOV06	29NOV06	40	31JAN07	31JAN07	213		0.00	140,696.38					
612 - NB Water Cooling Systems															
622.001	**not req'd for CD-4** ECP 16	01OCT04	04JAN05	0	30SEP04	23DEC04	1,201		0.00	0.00					
613 - Vacuum Pumping System															
623.011	Design WBS 612	02OCT06*	02OCT06*	59	02JAN07	02JAN07	194		0.00	23,312.00					
632.021	WBS 612 Assembly/Fabrication/Installation	03JAN07*	03JAN07*	40	27FEB07	27FEB07	194		0.00	66,041.54					
614 - Bakeout Water System															
625.001	*not req'd for CD-4** ECP 16	01OCT04	04JAN05	0	30SEP04	23DEC04	1,201		0.00	0.00					
62 - Cryogenic Systems															
621 - LN2-LHe Supply System															
631-001	Preliminary Design	02OCT06*	02OCT06*	65	10JAN07	10JAN07	135		0.00	15,961.26					
631-010	Final Design**reduced scope	11JAN07	11JAN07	65	11APR07	11APR07	135		0.00	17,754.22					
631-015	Fab/Assy/Installation**reduced scope	08JUN07*	08JUN07*	65	10SEP07	10SEP07	135		0.00	71,144.16					
631-020	Procurement **reduced scope	12APR07*	12APR07*	88	15AUG07	15AUG07	135		0.00	116,070.00					
622 - LN2 Coil Cooling Supply															
632-001	Preliminary Design**deleted scope	01OCT04	04JAN05	0	30SEP04	23DEC04	1,201		0.00	0.00					
632-010	Final Design**deleted scope	01OCT04	04JAN05	0	30SEP04	23DEC04	1,201		0.00	0.00					
632-015	Fab/Assy/Installation**deleted scope	01OCT04	04JAN05	0	30SEP04	23DEC04	1,201		0.00	0.00					
632-020	Procurement**deleted scope	01OCT04	04JAN05	0	30SEP04	23DEC04	1,201		0.00	0.00					
623 - GN2 Cryostat Cooling System															
633-001	Preliminary Design	02OCT06*	02OCT06*	40	28NOV06	28NOV06	145		0.00	15,961.26					
633-010	Final Design	29NOV06	29NOV06	55	21FEB07	21FEB07	145		0.00	24,926.06					
633-015	Fab/Assy/Installation	23APR07*	23APR07*	88	24AUG07	24AUG07	145		0.00	71,839.34					
633-020	Procurement	22FEB07*	22FEB07*	130	24AUG07	24AUG07	145		0.00	105,933.75					
63 - Utility Systems															
640.011	Design GN2, Air & Vent Systems	02OCT06*	02OCT06*	117	23MAR07	23MAR07	148		0.00	32,276.80					
640.021	Assembly/Fabrication	26MAR07*	26MAR07*	40	18MAY07	18MAY07	148		0.00	71,205.76					
64 - PFC/VV Heating & Cooling*ELIMINATED*															
650.001	Preliminary Design	01OCT04	04JAN05	0	30SEP04	23DEC04	1,201		0.00	0.00					
650.005	Final Design	01OCT04	04JAN05	0	30SEP04	23DEC04	1,201		0.00	0.00					
650.010	Lab Fab/Assy/Installation/Test	01OCT04	04JAN05	0	30SEP04	23DEC04	1,201		0.00	0.00					
650.012	Procured Hardware/Material	01OCT04	04JAN05	0	30SEP04	23DEC04	1,201		0.00	0.00					

Run Date 19JAN05 13:33

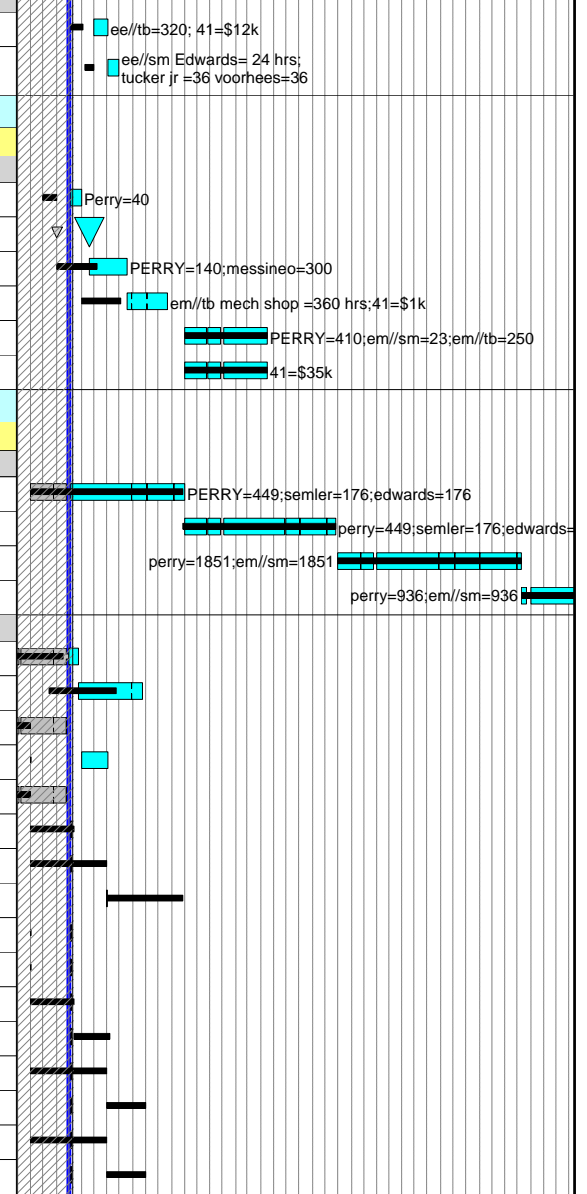


0412

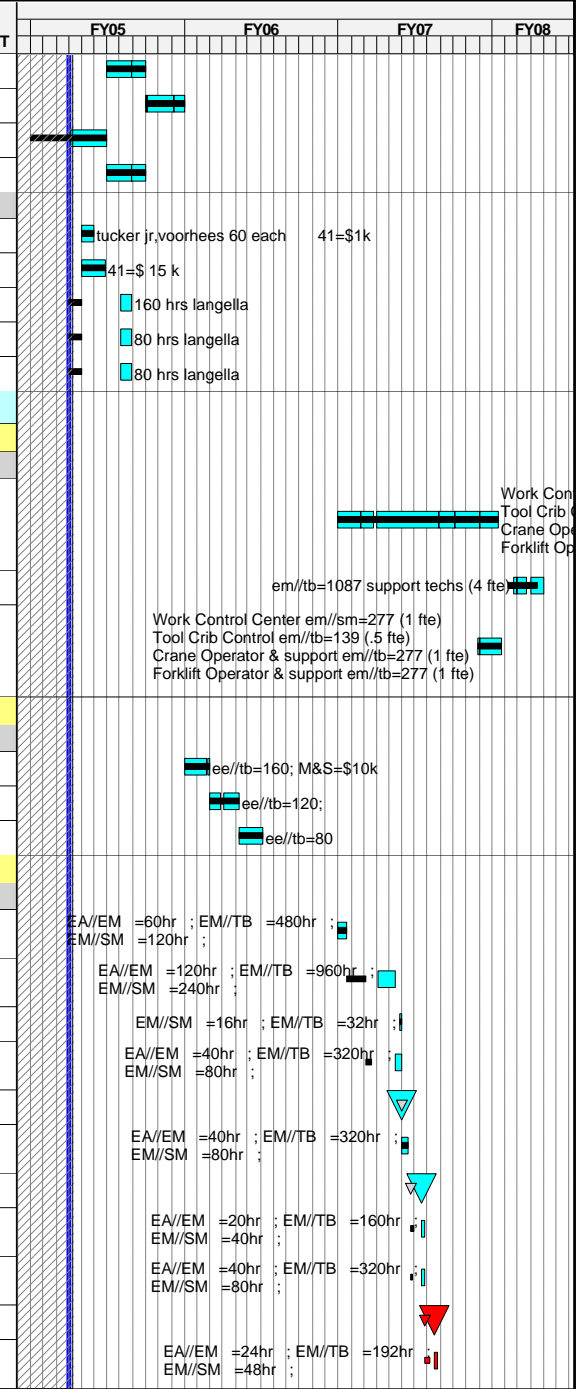
NCSX
ECP 18
January 1 Status

Sheet 35 of 40

Activity ID	Activity Description	Baseline Start	Forecast Start	Orig Dur	Baseline Finish	Forecast Finish	Total Float	PCTC	Earned value cost (BCWP)	Budget	ETC ADD'L COST	FY05	FY06	FY07	FY08
650.015	Procured Installation/Assy	01OCT04	04JAN05	0	30SEP04	23DEC04	1,201		0.00	0.00					
7 - Test Cell Preparation and Machine Assy															
72 - Control Room Refurbishment															
Job: 7201 - Control Room Walls&Floors-PERRY															
710.001	Block Wall east side control room	04JAN05*	01MAR05*	24	04FEB05	01APR05	1,119		0.00	41,762.40					
711B.050	Complete Control Room Flooring	07FEB05	04APR05	18	02MAR05	27APR05	1,119		0.00	8,447.76					
73 - Platform Design & Fabrication															
Job: 7301 - Platform Design & Fab-PERRY															
712.008	Update Platform Specification	01NOV04*	04JAN05*	20	30NOV04	31JAN05	1,051		0.00	6,699.60					
712.009	Platform PDR			0	30NOV04*	17FEB05*	1,038		0.00	0.00					
712.010	Final Design	01DEC04	18FEB05	65	09MAR05	19MAY05	1,044		0.00	54,843.60					
711A.040	Platform nut plates	01FEB05*	20MAY05*	65	02MAY05	22AUG05	1,038		0.00	30,027.00					
712.020	Platform Parts	03OCT05*	03OCT05*	132	14APR06	14APR06	304		0.00	24,541.00					
712.030	Miscs Hardware/Material	03OCT05*	03OCT05*	132	14APR06	14APR06	304		0.00	45,150.00					
74 - Machine Assembly Planning and Oversight															
Job: 7401 - TC Prep & Mach Assy Planning-PERRY															
Project Scope															
714.010	LOE FY05	01OCT04*	01OCT04A	249*	29SEP05	30SEP05	284	LOE	26,633.46	114,306.69					
714.020	LOE FY06 prior to assy starting	30SEP05	03OCT05	246	26SEP06	26SEP06	284		0.00	116,569.04					
714.030	LOE FY07 thru first plasma	02OCT06*	02OCT06*	300	12DEC07	12DEC07	281		0.00	550,917.49					
714.031	WBS 7 mgt stretch out cost	13DEC07	13DEC07	180	28MAY08	02SEP08	281		0.00	286,369.20					
FED/Infrastructure Support (non Project cost)															
613.015	Fabricate New Bottom Course of Blocks **GPP**	01APR04A	01APR04A	201*	15DEC04	21JAN05	1,086		0.00	0.00					
613.017	Install New Bottom Course **GPP**	15NOV04*	24JAN05	107	22APR05	22JUN05	1,086		0.00	0.00					
GPP004	GPP-Roofing Design	01APR04A	01APR04A	186*					0.00	0.00					
GPP004.1	GPP-Roofing Install	01OCT04*	01FEB05*	44*	30SEP04	01APR05	1,137		0.00	0.00					
GPP005	GPP-Test Cell lighting Design	01APR04A	01APR04A	186*					0.00	0.00					
GPP005.1	GPP-Test Cell lighting Install **TBD**	01OCT04	04JAN05	0	10JAN05	23DEC04	1,201		0.00	0.00					
GPP006	GPP-Test Cell HVAC/dew point control Design*TBD	01OCT04*	04JAN05	0	29MAR05	23DEC04	1,201		0.00	0.00					
GPP006.1	GPP-Test Cell HVAC/dew point control InstallTBD	30MAR05	30MAR05*	0	28SEP05	29MAR05	1,140		0.00	0.00					
GPP007	GPP-C-Site elevators Design	01OCT04*	04JAN05*	0*	30SEP04	23DEC04	1,201		0.00	0.00					
GPP007.1	GPP-C-Site elevators Install	01OCT04	04JAN05	0	30SEP04	23DEC04	1,201		0.00	0.00					
GPP008	GPP-Fire suppression high bay design*TBD*	01OCT04*	04JAN05	0	10JAN05	23DEC04	1,201		0.00	0.00					
GPP008.1	GPP-Fire suppression high bay install*TBD*	11JAN05	04JAN05	0	08APR05	23DEC04	1,201		0.00	0.00					
GPP009	Control Room Lights & Outlets design*TBD*	01OCT04*	04JAN05	0	31MAR05	23DEC04	1,137		0.00	0.00					
GPP009.1	Control Room Lights & Outlets install*TBD*	01APR05	04JAN05	0	30JUN05	23DEC04	1,137		0.00	0.00					
GPP010	Control Room HVAC Design **TBD**	01OCT04*	04JAN05	0	31MAR05	23DEC04	1,137		0.00	0.00					
GPP010.1	Control Room HVAC Install **TBD**	01APR05	04JAN05	0	30JUN05	23DEC04	1,137		0.00	0.00					



Activity ID	Activity Description	Baseline Start	Forecast Start	Orig Dur	Baseline Finish	Forecast Finish	Total Float	PCTC	Earned value cost (BCWP)	Budget	ETC ADD'L COST	FY05	FY06	FY07	FY08
GPP011	Control Room Ceiling Design	01APR05*	01APR05*	64	30JUN05	30JUN05	1,010		0.00	0.00					
GPP011.1	Control Room Ceiling Install	01JUL05	01JUL05	64	30SEP05	30SEP05	1,010		0.00	0.00					
GPP012	Control Rm Fire Detection & Suppression Design	01OCT04*	04JAN05*	63*	31MAR05	31MAR05	1,010		0.00	0.00					
GPP012.1	Control Rm Fire Detection & Suppression Install	01APR05	01APR05	64	30JUN05	30JUN05	1,010		0.00	0.00					
Test Cell Modifications & Upgrades															
613.030	Test Cell copper ground plane cuts	01FEB05*	01FEB05*	20	28FEB05	28FEB05	1,167		0.00	10,935.00					
713.010	General procurements	01FEB05*	01FEB05*	40	28MAR05	28MAR05	1,147		0.00	20,835.00					
7502-001	Test Cell 110v outlets	03JAN05*	02MAY05*	20	28JAN05	27MAY05	1,097		0.00	17,414.40					
7502-002	Test Cell 208v outlets	03JAN05*	02MAY05*	20	28JAN05	27MAY05	1,097		0.00	8,707.20					
7502-010	Ready Rooms (under control room) 110v outlets	03JAN05*	02MAY05*	20	28JAN05	27MAY05	971		0.00	8,707.20					
75 - Test Cell and Basement Assembly Operations															
7501 - Construction Support Crew															
7501-05	Construction Support Crew during machine assy	02OCT06*	02OCT06*	260	15OCT07	15OCT07	110		0.00	814,222.14					
7501-06	Construction Support Crew during e-beam mapping	07NOV07	23NOV07*	41	15JAN08	30JAN08	432		0.00	95,732.09					
7501-07	Construction Support Crew during cryostat instl	28AUG07	28AUG07*	40	23OCT07	23OCT07	495		0.00	92,672.39					
7502 - Test Cell Facility Preparations															
7502-020	Resurface TC floor	03OCT05*	03OCT05*	42	01DEC05	01DEC05	884		0.00	30,660.00					
7502-030	TC Floor firesealing	02DEC05	02DEC05	42	07FEB06	07FEB06	884		0.00	13,320.00					
7502-035	Control room firesealing	08FEB06	08FEB06	42	06APR06	06APR06	884		0.00	8,880.00					
7503 - Machine Assembly															
Revised Assembly Logic (ecp18)															
7503-020	Install & Level Support Base Plates	02OCT06	02OCT06	15	20OCT06	20OCT06	186		0.00	65,659.20					
7503-030	Install/Level FPA's and Spool Piece supports	23OCT06	05JAN07	30	05DEC06	15FEB07	140		0.00	131,318.40					
7503-060	Install Lower PF 4,5&6 into prelim position	27FEB07	26FEB07	2	28FEB07	27FEB07	147		0.00	4,590.56					
7503-070	Install 3 Spool Pieces on fixt & test movement	06DEC06	16FEB07	10	19DEC06	01MAR07	140		0.00	43,772.80					
7503-080	FPA-1 Installed on support platform			0	01MAR07	01MAR07	140		0.00	0.00					
7503-090	Install local Platforms around FPA-1	02MAR07	02MAR07	10	15MAR07	15MAR07	141		0.00	43,772.80					
7503-110	FPA-2 Installed on support platform			0	22MAR07	18APR07	106		0.00	0.00					
7503-120	Test movement of FPA-1& -2 & position checks.	23MAR07	19APR07	5	29MAR07	25APR07	106		0.00	21,886.40					
7503-130	Install local Platforms around FPA-2	23MAR07	19APR07	3	27MAR07	23APR07	114		0.00	43,772.80					
7503-150	FPA-3 Installed on support platform			0	26APR07	16MAY07	91		0.00	0.00					
7503-160	Position all FPA's / Spool Pieces @ MC Interface	27APR07	17MAY07	6	04MAY07	24MAY07	91		0.00	26,263.68					



Activity ID	Activity Description	Baseline Start	Forecast Start	Orig Dur	Baseline Finish	Forecast Finish	Total Float	PCTC	Earned value cost (BCWP)	Budget	ETC ADD'L COST	FY05	FY06	FY07	FY08
8203-11	Document NCSX Interlink& dwg control process	01DEC04*	03JAN05*	11	15DEC04	17JAN05	1,197		0.00	0.00					
8203-12	Update definition VV spool piece assy simul	01FEB05*	01FEB05*	19	25FEB05	25FEB05	1,168		0.00	0.00					
8203FY06	Design Integration FY06	03OCT05*	03OCT05*	250*	29SEP06	29SEP06	765		0.00	239,862.22					
8203FY07	Design Integration FY07	02OCT06*	02OCT06*	252*	01OCT07	01OCT07	513		0.00	131,804.52					
Job: 8204 - Systems Analysis-BROOKS															
8204FY05	Systems Analysis FY05	01OCT04*	01OCT04A	251*	30SEP05	30SEP05	1,015	LOE	60,229.36	260,733.17					
8204FY06	Systems Analysis FY06	03OCT05*	03OCT05*	250*	29SEP06	29SEP06	765		0.00	103,416.88					
85 - Integrated Systems Testing															
920.001	Procedure and Document Preparation	16OCT06*	16OCT06*	250	15OCT07	15OCT07	110		0.00	561,846.69					
920.000	Startup Personnel	17SEP07	03OCT07	72	07JAN08	22JAN08	92		0.00	661,852.01					
920.005	Punch list,Cmplt PTP's,Reconfig, Rm temp Hi-pot	23AUG07	23AUG07	37	15OCT07	15OCT07	120		0.00	0.00					
920.010	Field Coil Testsing,FCPC test & E-Beam Mapping	07NOV07	23NOV07	25	13DEC07	08JAN08	92		0.00	0.00					
920.020	Final ISTP	14DEC07	09JAN08	7	02JAN08	17JAN08	92		0.00	0.00					
920.021	Operations Approval	03JAN08	18JAN08	3	07JAN08	22JAN08	92		0.00	0.00					
730.9000	First Plasma			0	07JAN08	22JAN08	92		0.00	0.00					
M-0120	CD-4 First Plasma			0	30MAY08*	30MAY08*	0		0.00	0.00					
Allocations															
PPPL Allocations															
Job: 8998 - Allocations															
99.05	PPPL Allocations FY05	01OCT04*	01OCT04A	251*	30SEP05	30SEP05	1,015	LOE	72,610.74	314,332.20					
99.06	PPPL Allocations FY06	03OCT05*	03OCT05*	250*	29SEP06	29SEP06	765		0.00	320,745.30					
99.07	PPPL Allocations FY07	02OCT06*	02OCT06*	251*	28SEP07	28SEP07	514		0.00	166,893.23					
Contingency															
Contingency-Project															
99.105	Contingency	01SEP05*	01SEP05*	21*	29SEP05	29SEP05	1,016		0.00	1,200,001.40					
99.106	Contingency	03OCT05*	03OCT05*	250*	29SEP06	29SEP06	765		0.00	2,917,148.73					
99.107	Contingency	02OCT06*	02OCT06*	251*	28SEP07	28SEP07	514		0.00	5,431,133.02					
99.108	Contingency	01OCT07*	01OCT07*	166*	30MAY08	30MAY08	348		0.00	3,504,602.56					

