

NCSX	<u>NATIONAL COMPACT STELLARATOR EXPERIMENT</u>	
PROCEDURE: NCSX-PROC-011 Revision 0		Page 1 of 8
Title: Use of FroTools Program for Accessing NCSX Pro/E Drawings	Initiated by: NCSX Systems Engineering Support Manager	Effective Date: November 2, 2006
Concurrence by: NCSX Quality Assurance Manager	Concurrence by: NCSX Design Integration Manager	Concurrence by: PPPL Mechanical Design Supervisor
	Approved by: NCSX Engineering Manager	Supersedes: New

Record of Revisions

Revision	Date	Description of Changes
0	11/2/2006	Initial Issue

Applicability

This procedure is applicable to the entire NCSX Project.

Introduction

The NCSX ProE/INTRALINK Users Guide (NCSX-GUID-PRO/INTR) and the NCSX Procedure NCSX-PROC-007 (NCSX Electronic Model and Drawing/INTRALINK Processes) describe the operation of the Pro/INTRALINK database. *FroTools* is a browser based program that enables personnel not having direct access to Pro/Engineer (Pro/E) or do not have in-depth familiarity with how to navigate the Pro/INTRALINK database to relatively easily access and copy CAD files to their desktop. If used correctly, *FroTools* will provide easy web access to the Pro/INTRALINK database. While *FroTools* has the capability to access other formats such as native ProE, DXF, IGES, etc. files, the NCSX Project's use of *FroTools* is limited to accessing electronically signed pdf drawings.

In order to utilize *FroTools*, three prerequisites must be met:

- A potential user must connect to *FroTools* via the Princeton Intralink Data Access (PIDA) web at: <http://www/pida.pppl.gov>;
- A potential user must have an INTRALINK Account – the CADD Administrator in the Computer Division is the contact person to obtain this account; and
- A potential user must be trained in the use of *FroTools* – the Design Integration Manager or his designee will provide this training (either one-on-one or in group session).

<p>Controlled Document</p> <p>THIS IS AN UNCONTROLLED DOCUMENT ONCE PRINTED. Check the NCSX Engineering Web prior to use to assure that this document is current.</p>
--

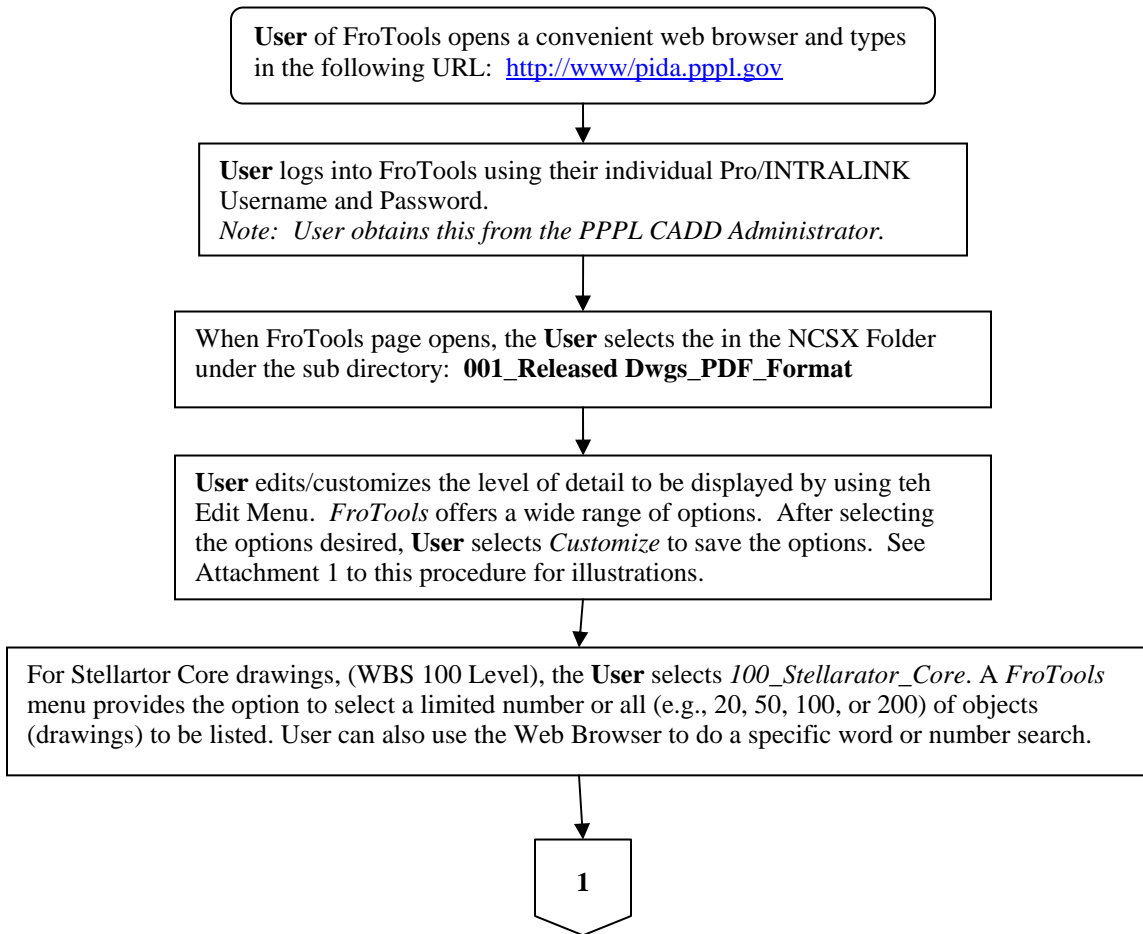
This procedure will cover the basics of using *FroTools*.

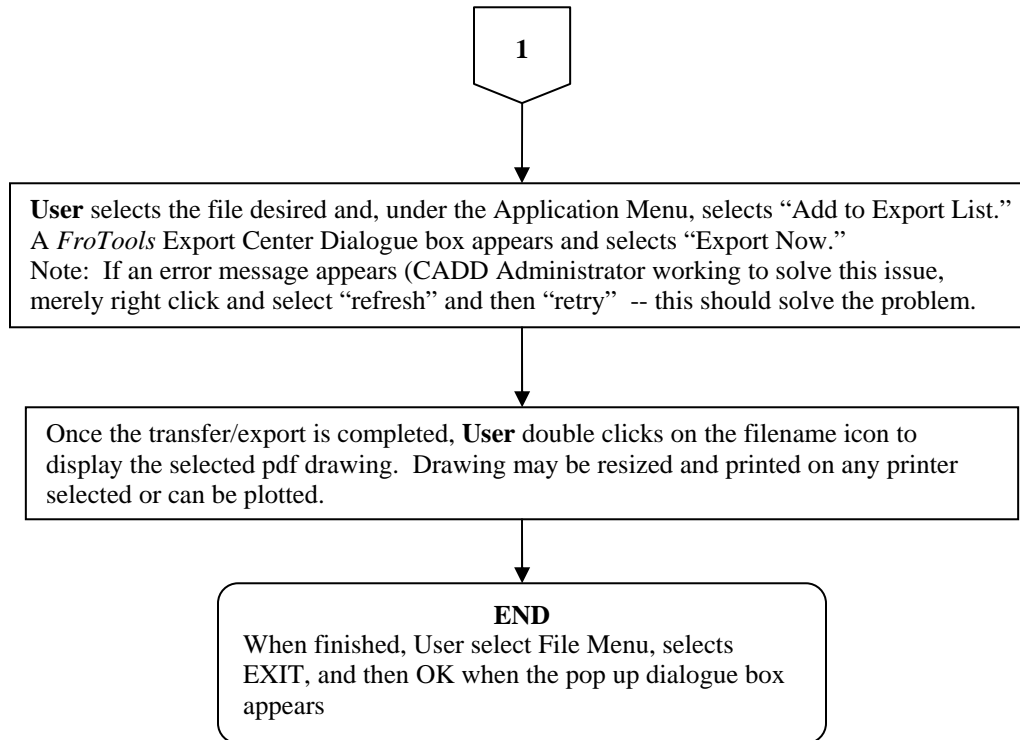
Referenced Documents

Document Number	Document Title
NCSX-GUID-PRO/INTR	Pro/INTRALINK Users Guide
NCSX-PROC-007	NCSX Electronic Model and Drawing/INTRALINK Processes

Procedure

A. Use of FroTools





Attachment

1- FroTools Illustration

Controlled Document

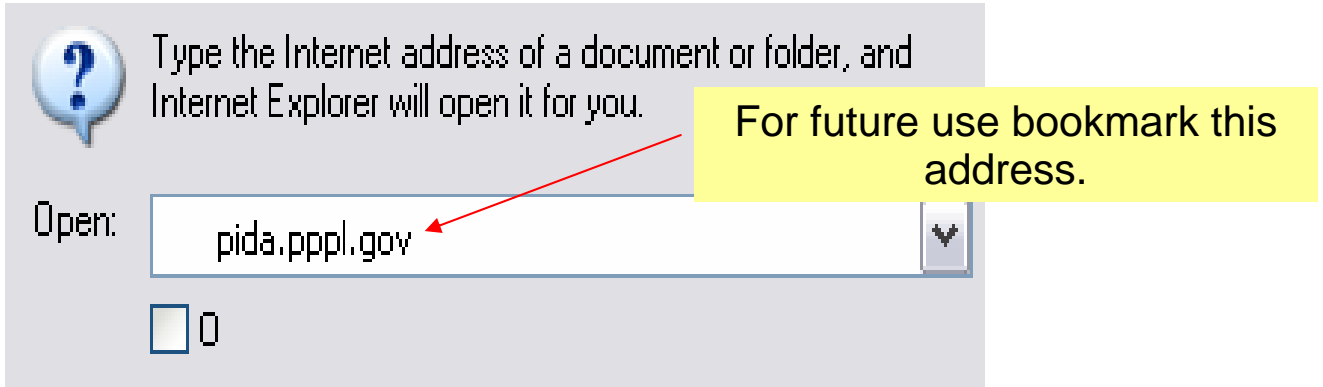
THIS IS AN UNCONTROLLED DOCUMENT ONCE PRINTED. Check the NCSX Engineering Web prior to use to assure that this document is current.

Attachment 1

FroTools Illustration

The following screen shots are intended to provide the User of *FroTools* an illustrative example on how the *FroTools* program will work.

Open a Web Browser and Type in this address



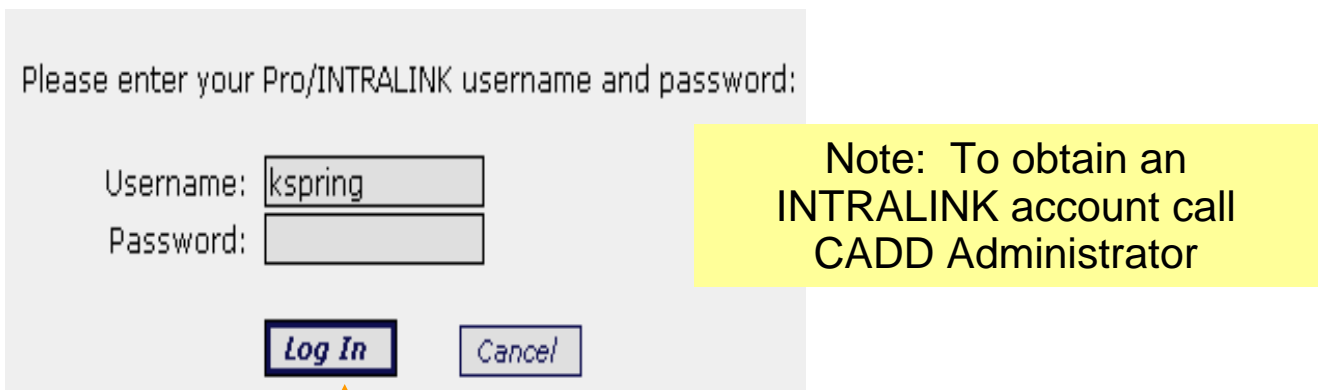
Type the Internet address of a document or folder, and Internet Explorer will open it for you.

Open:

0

For future use bookmark this address.

Enter INTRALINK Username and Password



Please enter your Pro/INTRALINK username and password:

Username:

Password:

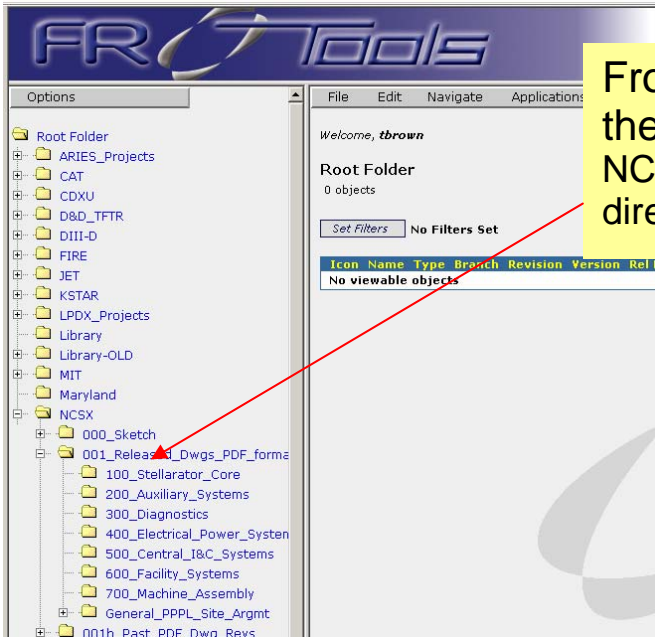
Note: To obtain an INTRALINK account call CADD Administrator

Click on Log In

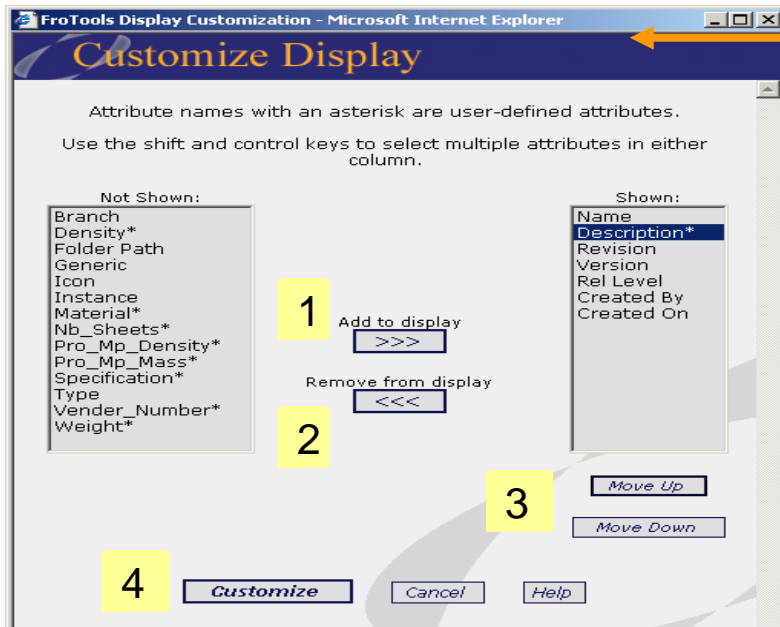
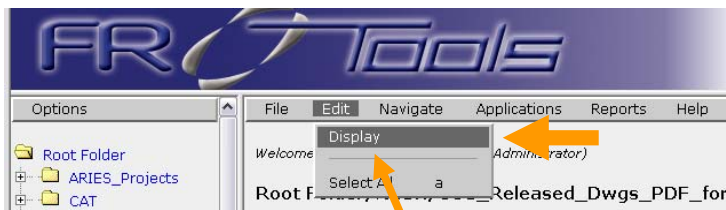
Controlled Document

THIS IS AN UNCONTROLLED DOCUMENT ONCE PRINTED. Check the NCSX Engineering Web prior to use to assure that this document is current.

Attachment 1
FroTools Illustration



FroTools opens with a page showing the INTRALINK folders. NCSX pdf files are located in the sub directory: 001_Released Dwgs_PDF_format

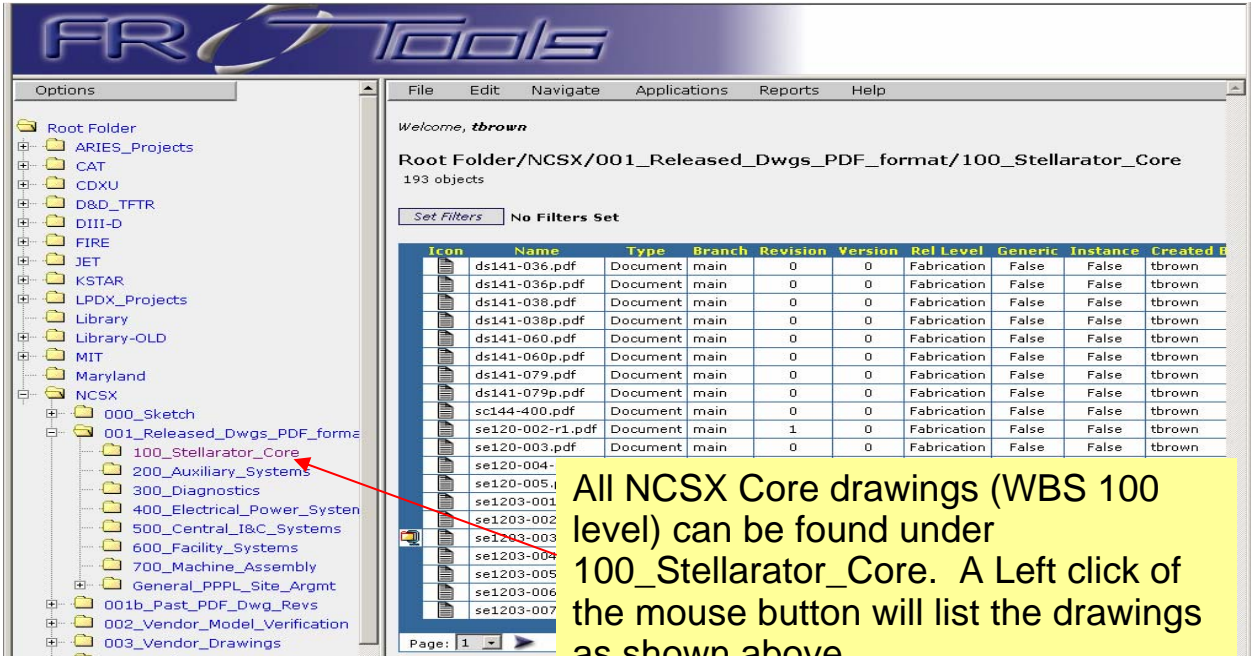


Select Edit / Display

To format the Listing

- 1 Add to Display
- 2 Remove from Display
- 3 Move Up/Move Down
- 4 Customize

Attachment 1
FroTools Illustration

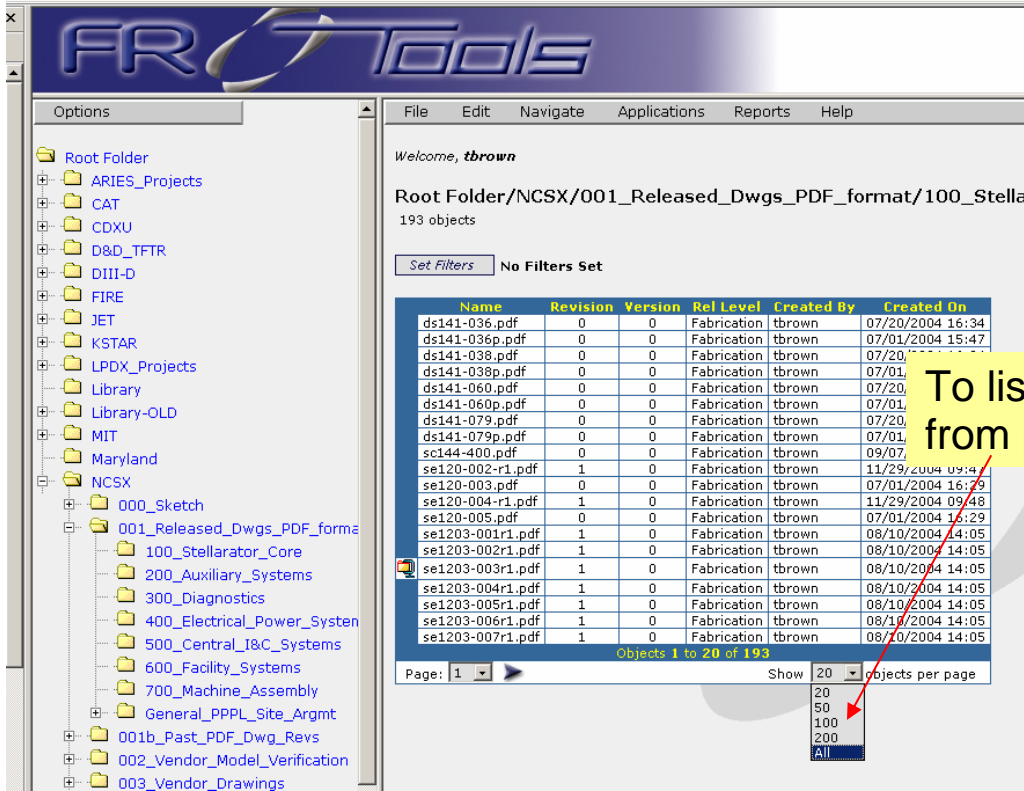


Controlled Document

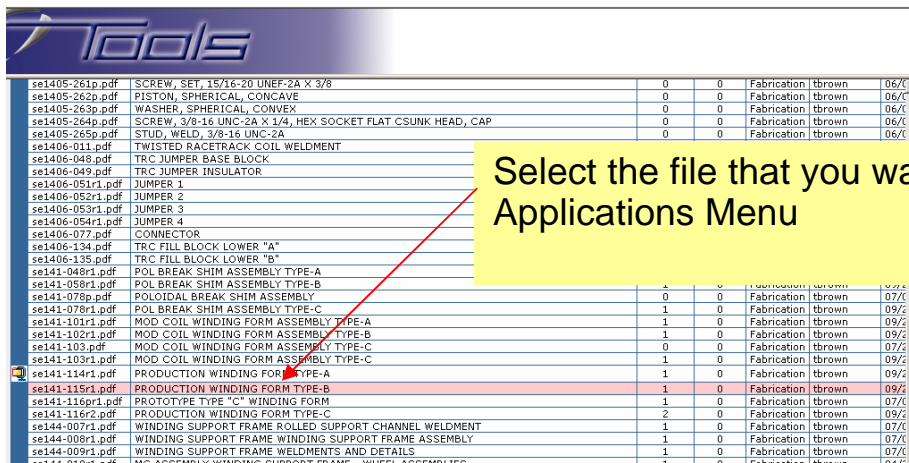
THIS IS AN UNCONTROLLED DOCUMENT ONCE PRINTED. Check the NCSX Engineering Web prior to use to assure that this document is current.

Attachment 1

FroTools Illustration

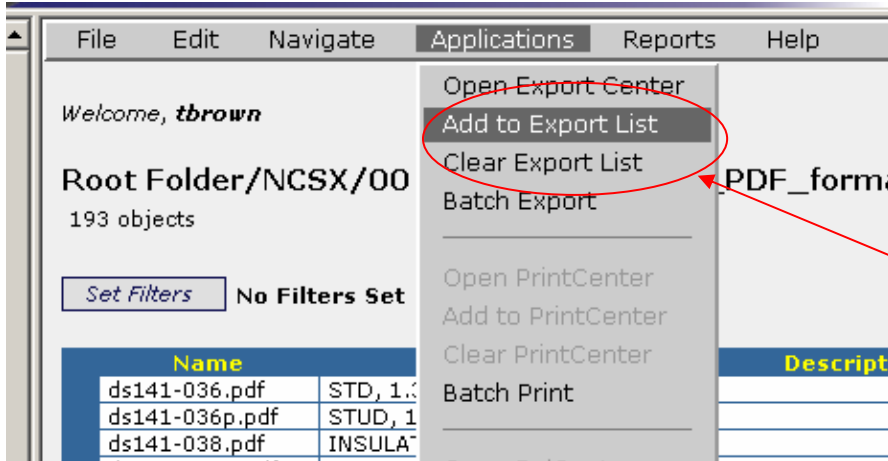


To list all files select All from pull down window

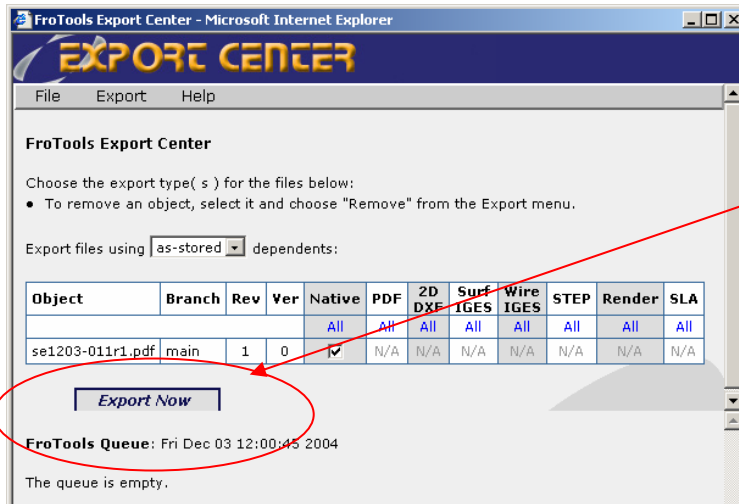


Select the file that you want, and under the Applications Menu

Attachment 1
FroTools Illustration

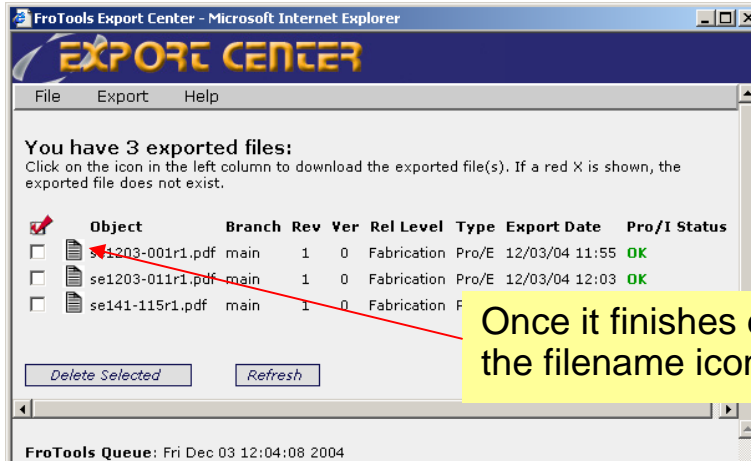


Select "Add to Export List"



Select "Export Now"

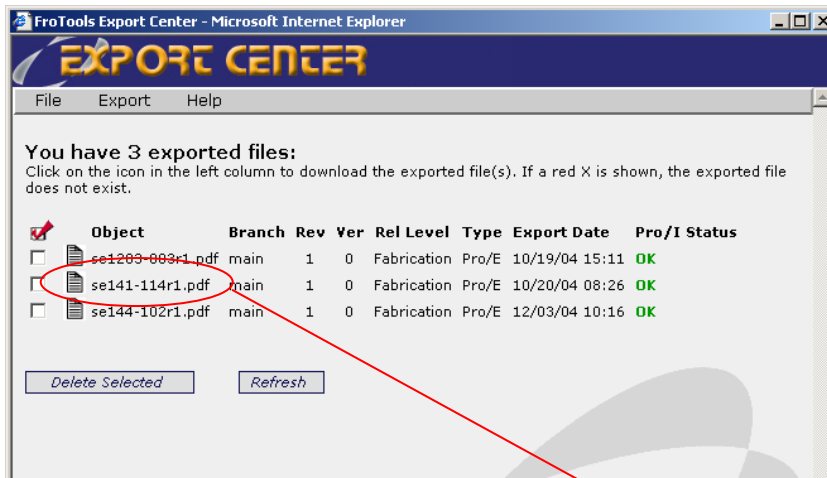
Attachment 1
FroTools Illustration



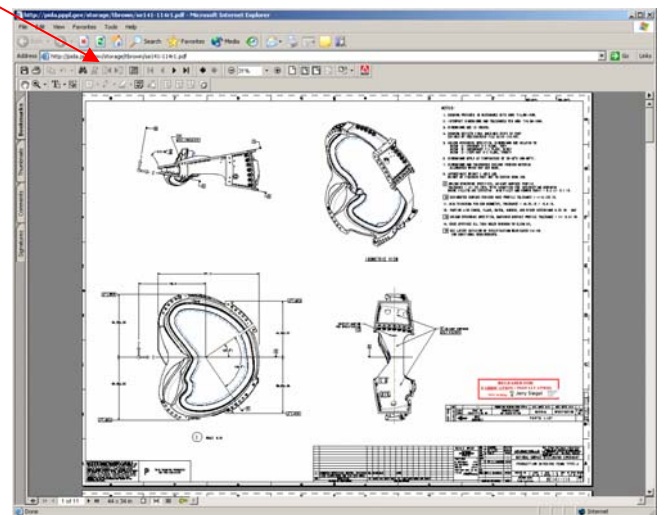
If error message appears:

- Right click and select "refresh"
- When second dialogue box appears, select "retry"

Once it finishes double click on the filename icon



After clicking the filename icon the Acrobat drawing file will appear. The drawing can be re-sized and printed to any installed printer or it can be sent to plotters.

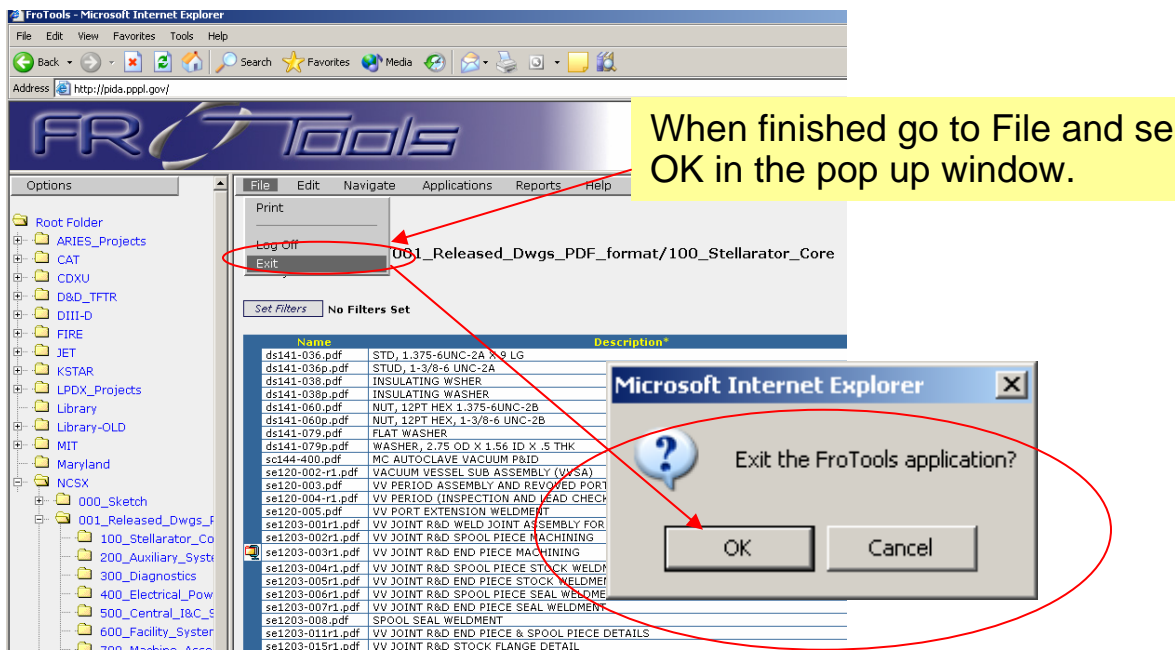
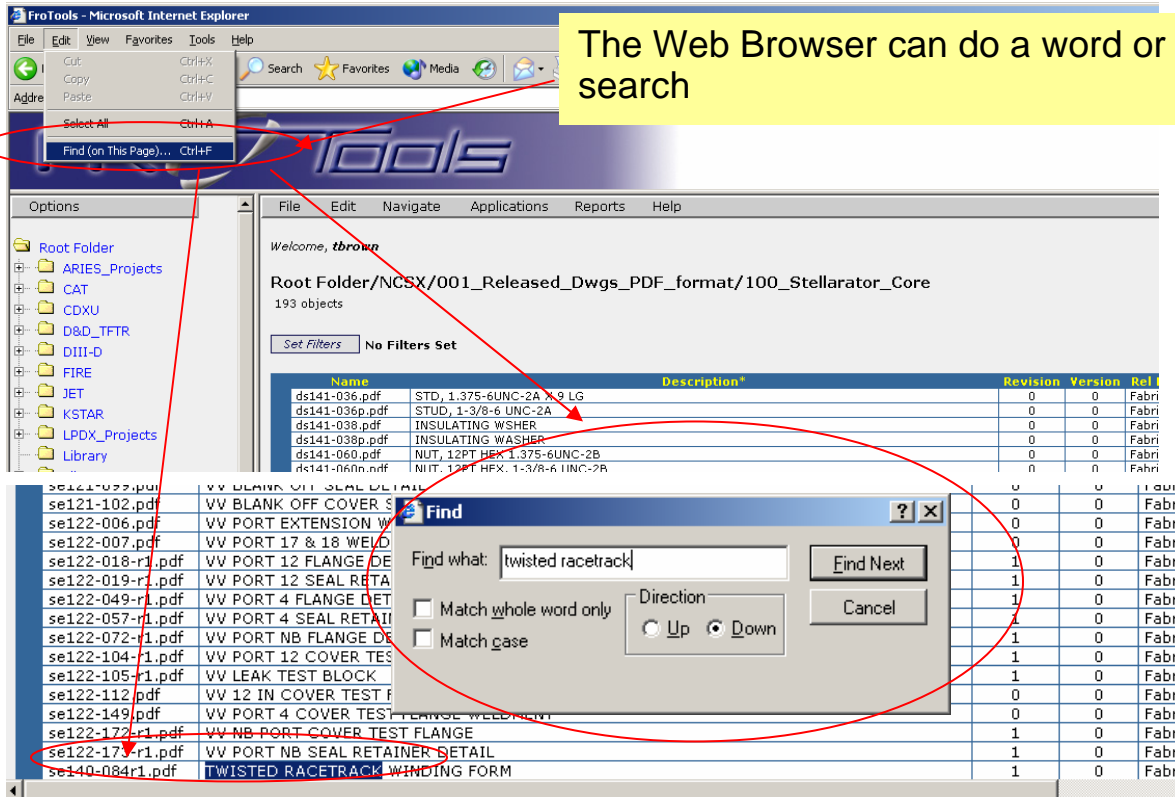


Controlled Document

THIS IS AN UNCONTROLLED DOCUMENT ONCE PRINTED. Check the NCSX Engineering Web prior to use to assure that this document is current.

Attachment 1

FroTools Illustration



Controlled Document

THIS IS AN UNCONTROLLED DOCUMENT ONCE PRINTED. Check the NCSX Engineering Web prior to use to assure that this document is current.