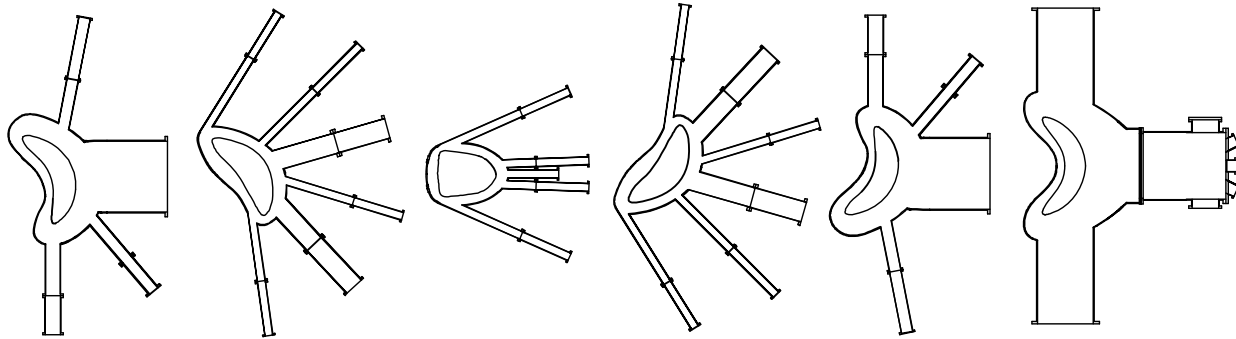
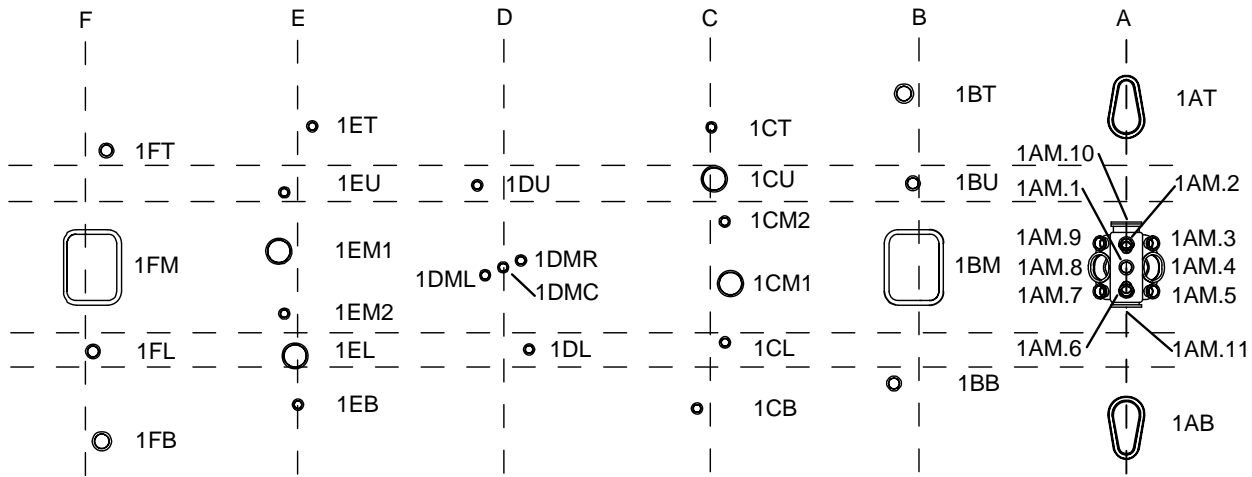


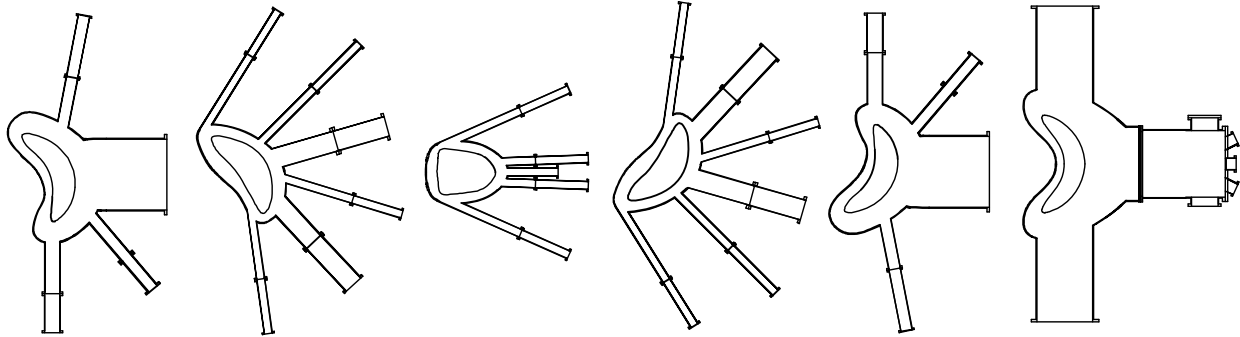
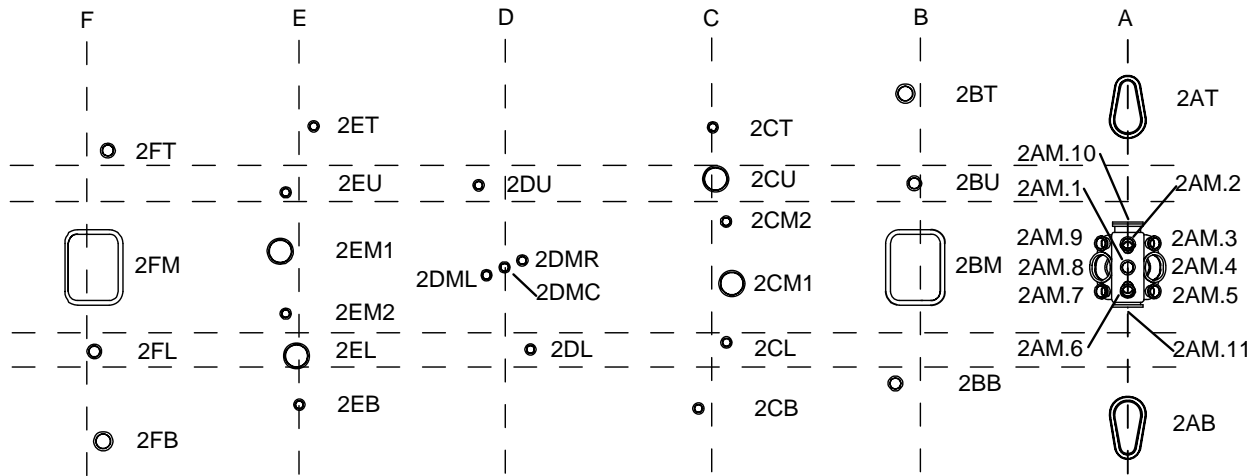
Period 1



F		E		D		C		B		A					
1FT	inboard gas or pellet inj.	1ET	equilib. magn. (120 M)			1CT	Mirnov coils (90 tp)	1BT		1AT div. bolometer div. camera					
				1DU	RF antenna feedthrough										
		1EU	gas inj. (reg. & supersonic)			1CU		1BU	core UV spectroscopy	1AM.10					
				1DMR	SXR arrays (90 tp)	1CM2				1AM.9	thermocouples (45 tp)	1AM.2		1AM.3	ion gauge
1FM	fluctuation diag. (HIBP?)	1EM1	(H α , C) camera	1DMC	SXR arrays (90 tp)	1CM1		1BM	fluctuation diag. (BES)	1AM.8	heating neutral beam	1AM.1		1AM.4	heating neutral beam
		1EM2	fast pressure gauges	1DML	SXR arrays (90 tp)					1AM.7	fast pressure gauges	1AM.6		1AM.5	compact IR camera
1FL	Mirnov (20 tp) thermo (15 tp)	1EL				1CL	visible spectroscopy					1AM.11	vacuum pump, ion gauge		
				1DL	RF antenna feedthrough										
1FB		1EB				1CB	magn. (120 M)	1BB	glow probe & 2 filaments (5 c)					1AB	div. UV Spect. div. IR camera

Electrical feedthroughs: tp=twisted pair, M=mineral insulated cable, c= single conductor

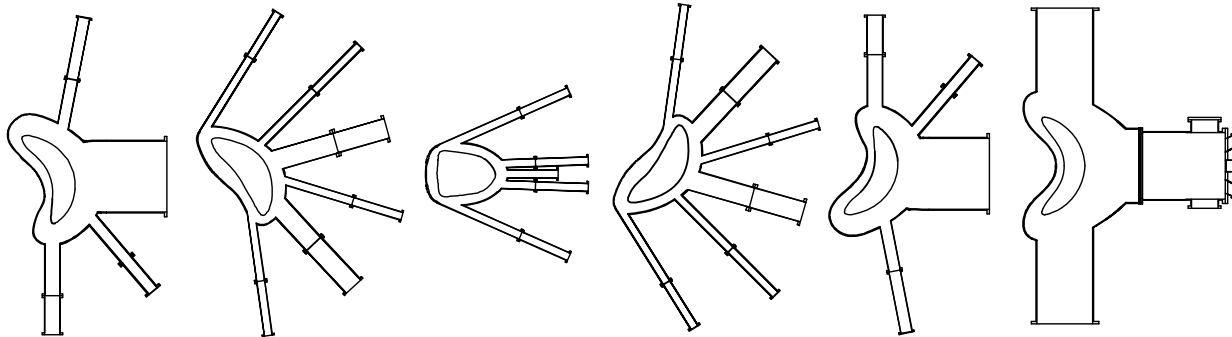
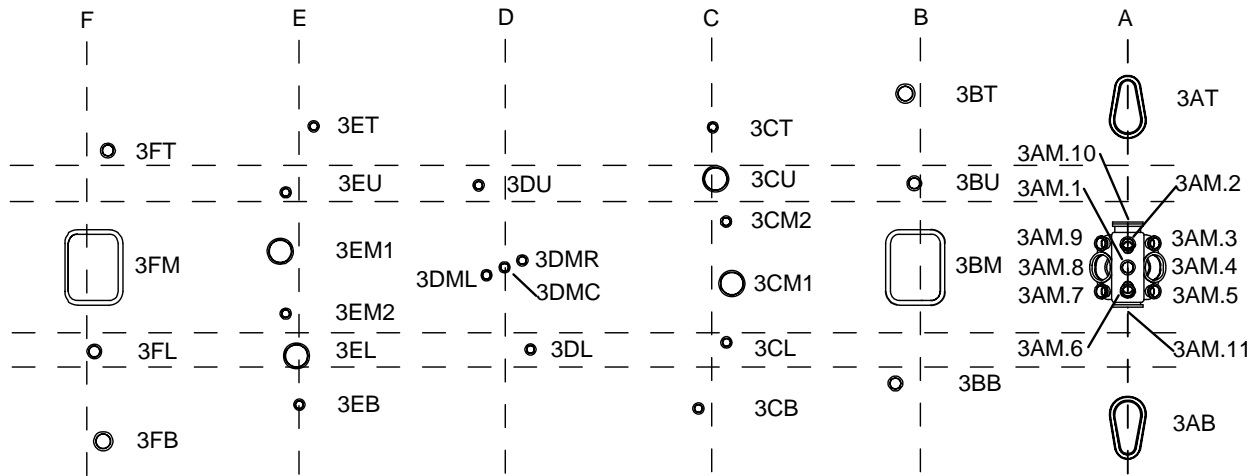
Period 2



F		E		D		C		B		A					
2FT	HIBP?	2ET	magn. (120 M)			2CT	Mirnov coils (90 tp)	2BT	bolometer array	2AT					
				2DU	RF antenna feedthrough					2AM.10					
		2EU	gas inj. (reg. & supersonic)			2CU	mapping probe	2BU		2AM.9					
				2DMR	SXR arrays (90 tp)	2CM2				2AM.9	thermocouples (15 tp)	2AM.2	visible filterscope	2AM.3	ion gauge
2FM	TS view	2EM1	visible filterscopes	2DMC	SXR arrays (90 tp)	2CM1	CHERS	2BM	MSE	2AM.8	diagnostic neutral beam	2AM.1		2AM.4	visible camera
		2EM2	fast pressure gauges	2DML	SXR arrays (90 tp)					2AM.7	fast pressure gauges	2AM.6	visible filterscopes	2AM.5	divertor visible camera
2FL	Mirnov coils (20 tp)	2EL				2CL	fast scanning edge probe					2AM.11	vacuum pump, ion gauge		
				2DL	RF antenna feedthrough										
2FB	inboard gas or pell. inj.	2EB				2CB	equilib. magn. (120 M)	2BB	glow probe & 2 filaments (5 c)					2AB	FIR int./polar. 1-mm inter.

Electrical feedthroughs: tp=twisted pair, M=mineral insulated cable, c= single conductor

Period 3



F		E		D		C		B		A					
3FT	inboard gas or pellet inj.	3ET	magn. (120 MI)			3CT	Mirnov (90 tp) thermo. (30 tp)	3BT				3AT	TS laser		
				1DU	RF antenna feedthroughs				fast ion loss probe			31M.10	TS laser		
		3EU	gas inj. (reg. & supersonic)			3CU		3BU		3AM.9	thermo. (15 tp) Lang. Pr. (50 c)	3M.2		3AM.3	visible camera
3FM	mapping target	3EM1	fluctuation diagnostic	1DMR	SXR arrays (90 tp)	3CM2		3BM	neutral particle analyzer	3AM.8	visible camera	3AM.1	X-ray crystal spectrometer	3AM.4	fast tang. X-ray camera
		3EM2	fast pressure gauges	1DML	SXR arrays (90 tp)					3AM.7	fast pressure gauges	3AM.6	vacuum pump, ion gauge	3AM.5	ion gauge
3FL	Mirnov coils (20 tp)	3EL				3CL	Langmuir probe					3AM.11			
				1DL	RF antenna feedthroughs										
3FB		3EB				3CB	equilib. magn. (120 MI)	3BB	glow probe & 2 filaments (5 c)					3AB	TS dump

Electrical feedthroughs: tp=twisted pair, MI=mineral insulated cable, c= single conductor