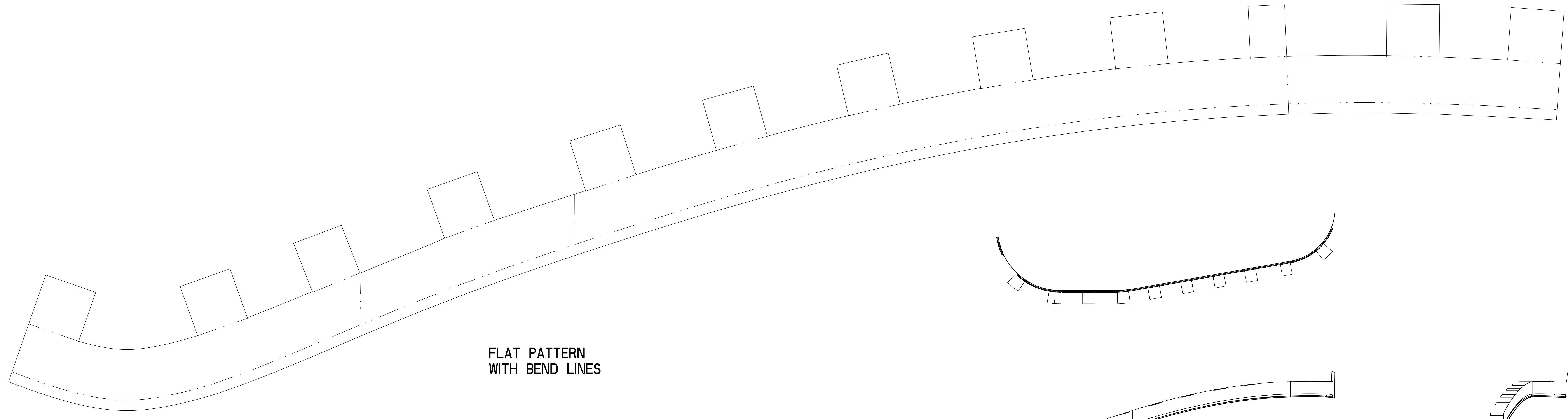
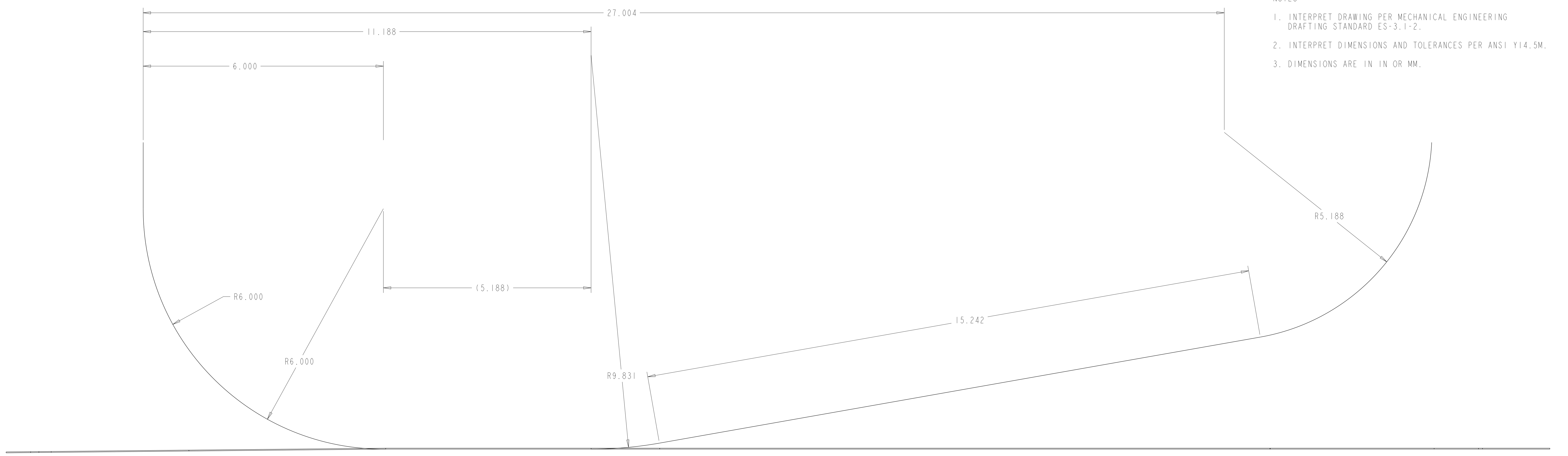
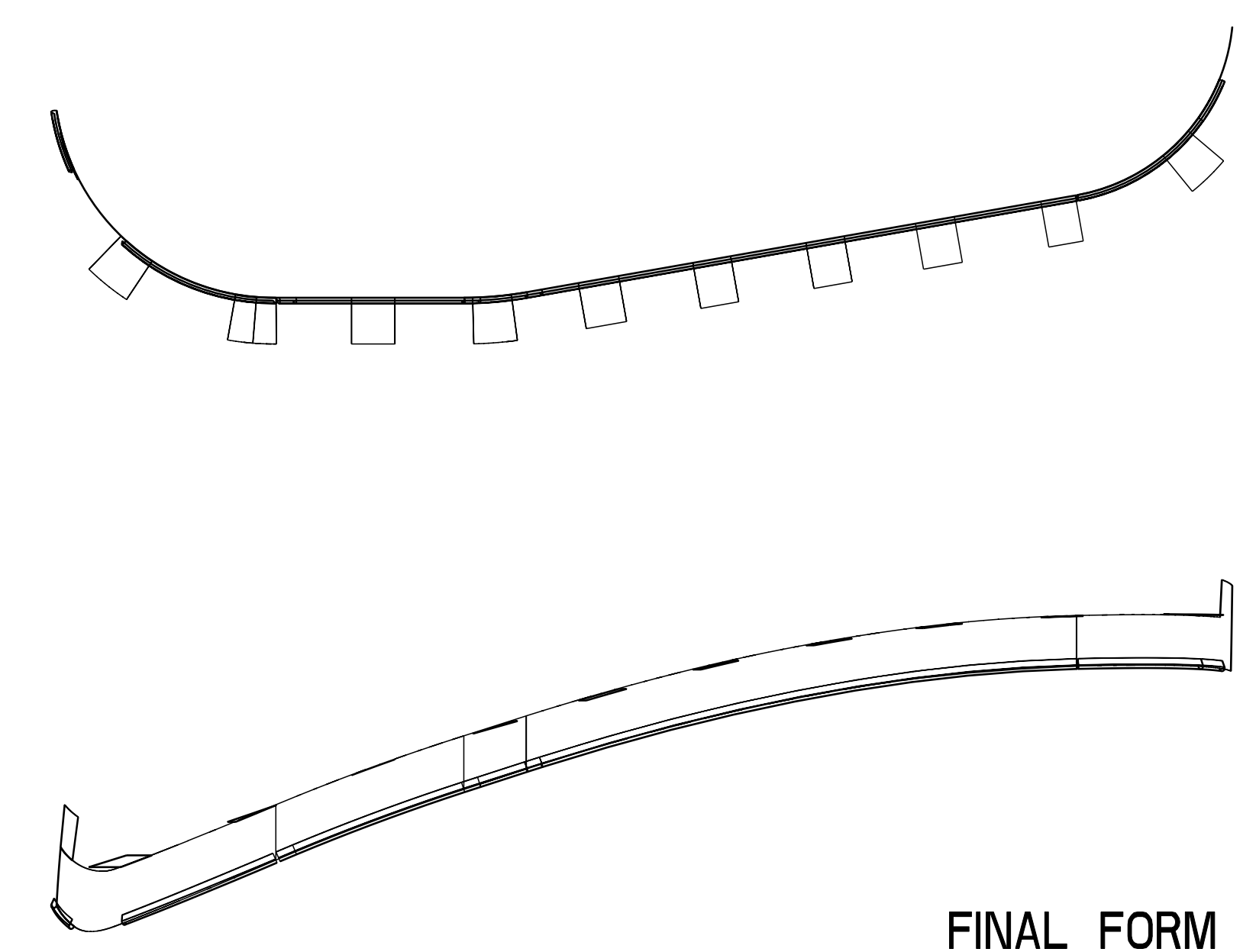


- NOTES
1. INTERPRET DRAWING PER MECHANICAL ENGINEERING DRAFTING STANDARD ES-3.1-2.
  2. INTERPRET DIMENSIONS AND TOLERANCES PER ANSI Y14.5M.
  3. DIMENSIONS ARE IN IN OR MM.



FLAT PATTERN WITH BEND LINES



FINAL FORM

REV	DESCRIPTION	BY	DATE	CHK	DEPT	DATE	PE	REQ	DATE	ORNL	DOE	DATE

next assy	CAGE CODE	SEI22-384 PART OR IDENTIFYING NO	PORT 12 SHEET METAL CUFF NOMENCLATURE OR DESCRIPTION	24 GAGE 316L ANNEALED MATERIAL	ASTM A240 SPECIFICATION	FIND NO

SCALE NOTED	DES P GORANSON	08/05
TOLERANCES UNLESS OTHERWISE SPECIFIED	CHK MT BROWN	08/05
FRACTIONS	SECT	
XX DECIMALS ±.01	DEPT	
XXX DECIMALS ±.005	PE	
ANGLES ±0°15'	CR	
BREAK SHARP EDGES .06 MAX	PJ	
FINISH .125 UNLESS OTHERWISE SPECIFIED	RED	
	PPPL DRFT	

UT-BATTELLE		Oak Ridge National Laboratory managed for the DEPARTMENT OF ENERGY under U.S. GOVERNMENT CONTRACT DE-AC05-00OR22725 UT-BATTELLE, LLC, Oak Ridge, Tennessee	
PROJECT NAME			
NATIONAL COMPACT STELLARATOR EXPERIMENT			
PORT 12 SHEET METAL CUFF FLAT PATTERN AND FINAL FORM			
VERSION NO.	PLANT	BLOG	FL SHT OF TYPE CLASS
proj.version	ORNL	5700	3   1   S
RELEASE LEVEL	proj.release		

NO REPRESENTATION OR WARRANTY, EXPRESSED OR IMPLIED, IS MADE AS TO THE ACCURACY, COMPLETENESS OR USEFULNESS OF THE INFORMATION OR STATEMENTS CONTAINED IN THESE DRAWINGS, OR THAT THE USE OR DISCLOSURE OF ANY INFORMATION, APPARATUS, METHOD OR PROCESS DISCLOSED IN THESE DRAWINGS MAY NOT INFRINGE PRIVATE RIGHTS OF OTHERS. NO LIABILITY IS ASSUMED WITH RESPECT TO THE USE OF, OR FOR DAMAGES RESULTING FROM THE USE OF, ANY INFORMATION, APPARATUS, METHOD OR PROCESS DISCLOSED IN THESE DRAWINGS. DRAWINGS MADE AVAILABLE FOR INFORMATION TO BIDDERS ARE NOT TO BE USED FOR OTHER PURPOSES, AND ARE TO BE RETURNED UPON REQUEST OF THE FORWARDING CONTRACTOR.

**P** THIS DRAWING PRODUCED ON PRO-ENGINEER

SEI22-384

A