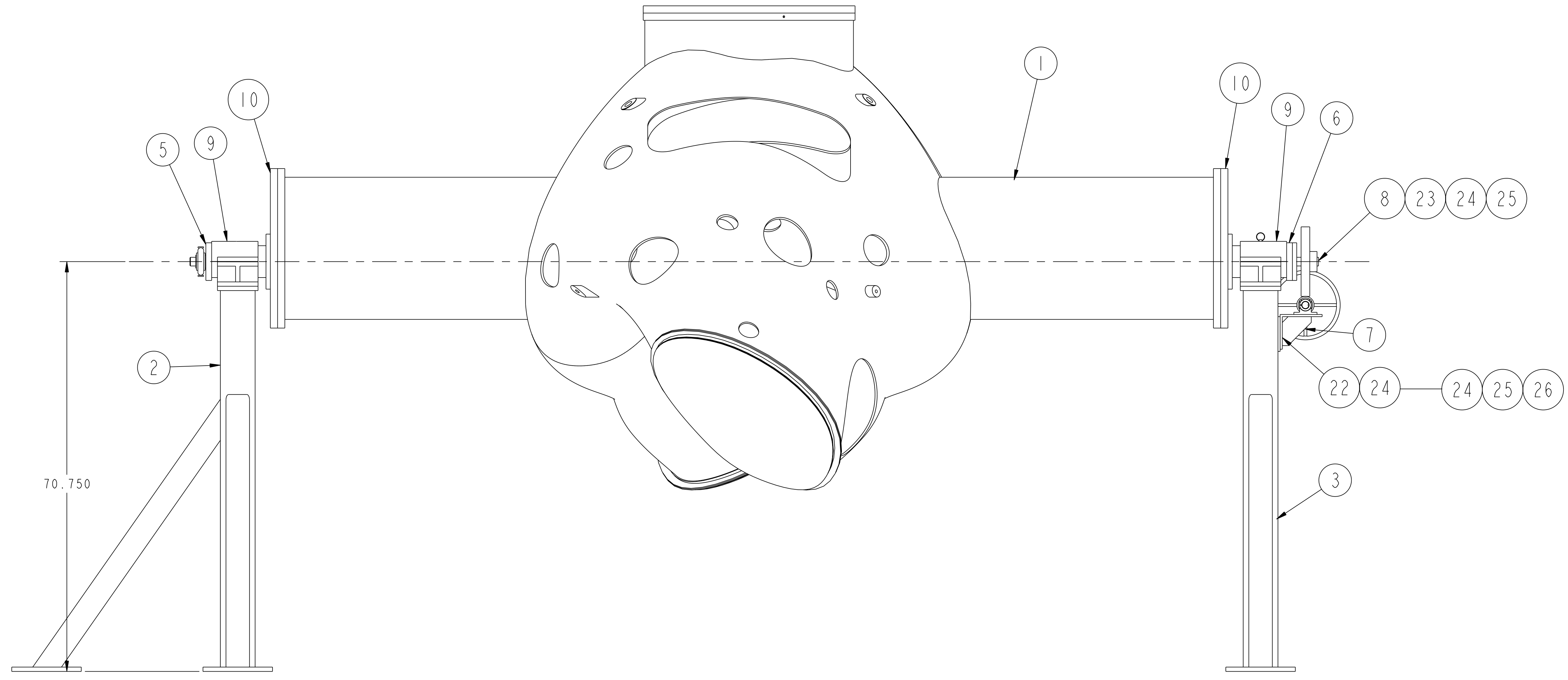
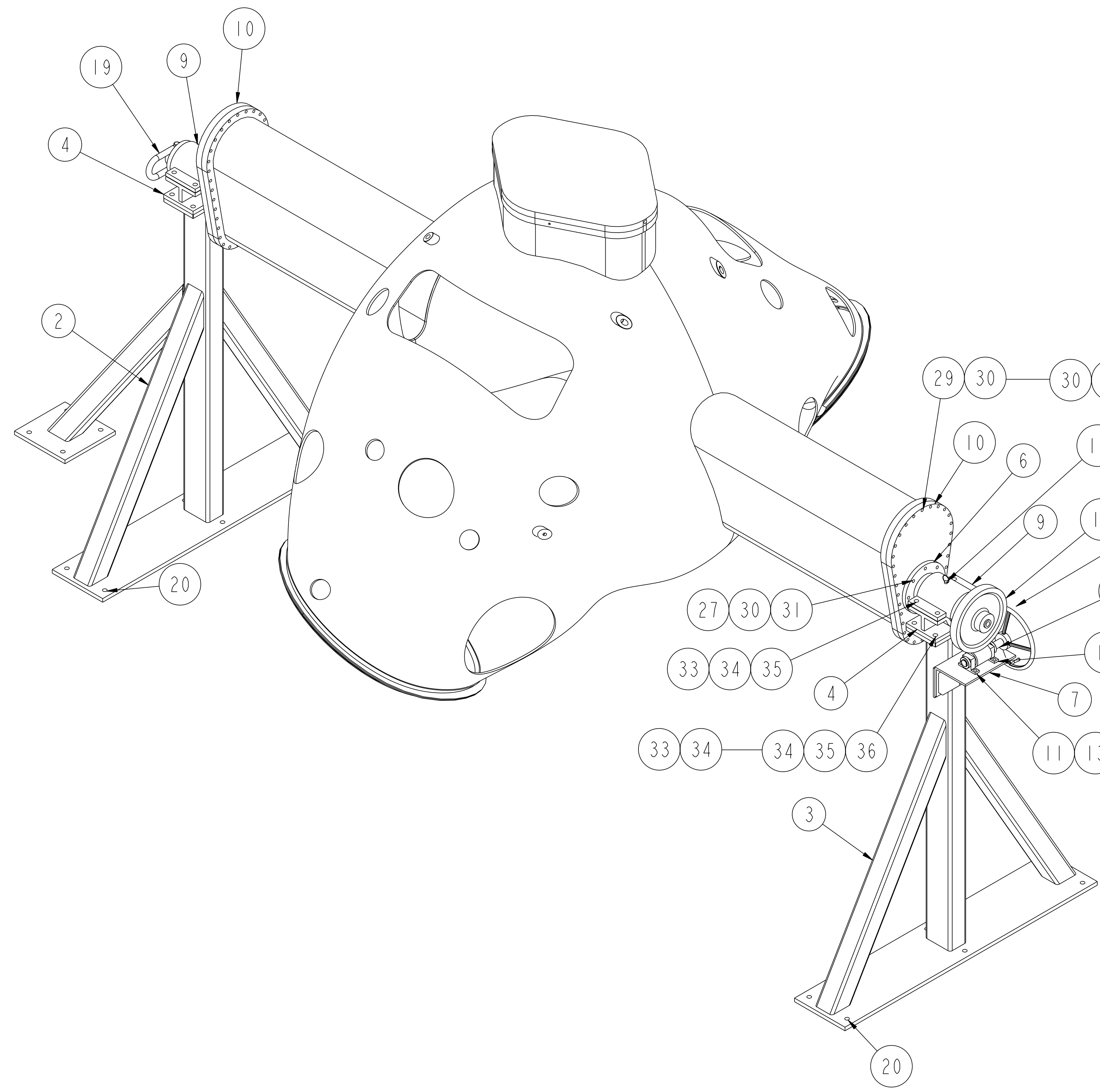
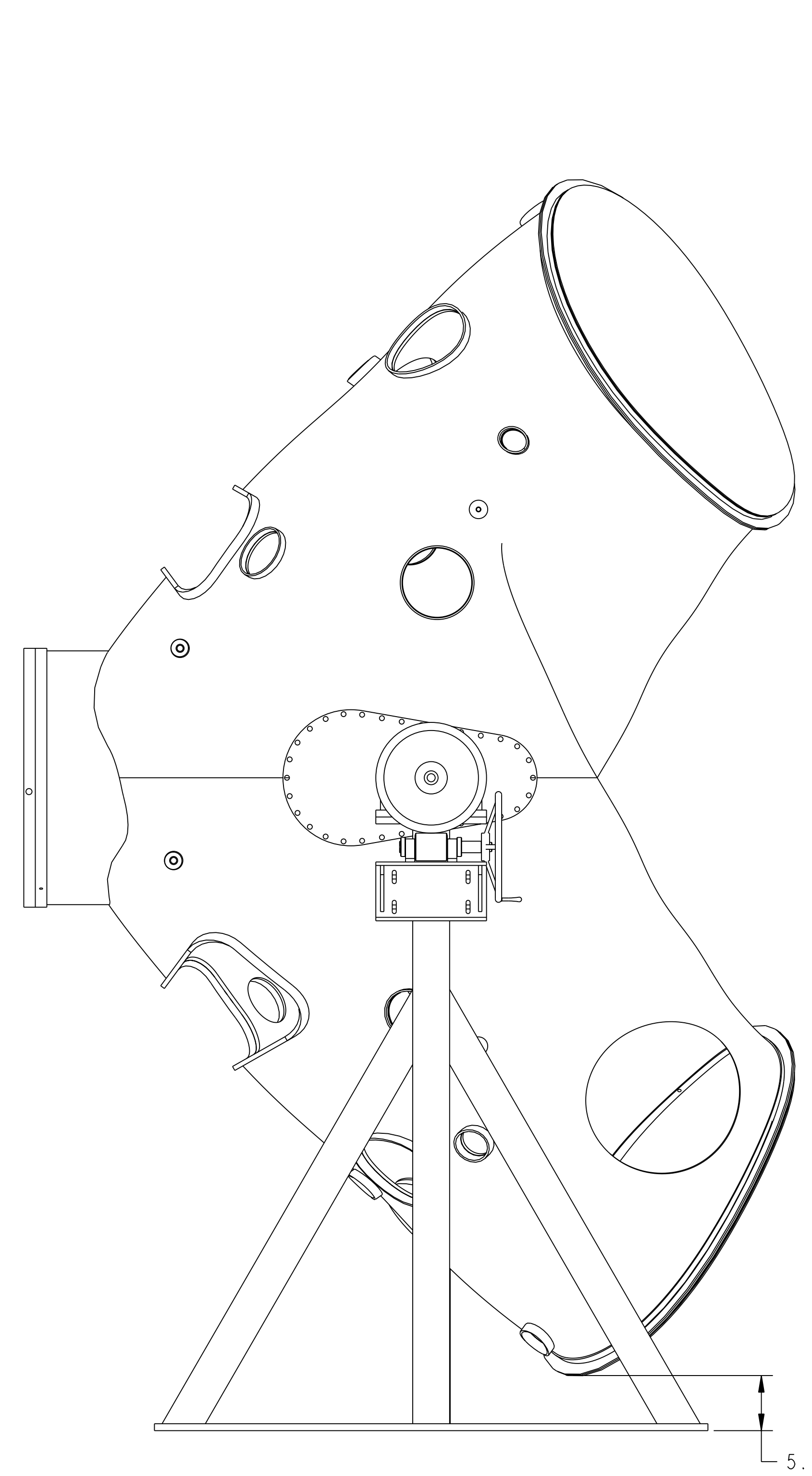


NO.	REVISION	BY	CH	SUP	APPROVED	DATE



QTY	PART NO.	DESCRIPTION	MATERIAL	QTY REQD
8	36	COMM 3/4-10UNC-2B HEX NUT	C' STL - ZN PLT	
16	35	COMM 3/4" SPLIT LOCK WASHER	C' STL - ZN PLT	
24	34	COMM 3/4" (NOM) FLAT WASHER	C' STL - ZN PLT	
16	33	COMM 3/4-10UNC-2A x 2 1/2" LG HEX HD CAP SCR	C' STL - ZN PLT	
64	32	COMM 1/2-13UNC-2B HEX NUT	C' STL - ZN PLT	
72	31	COMM 1/2" SPLIT LOCK WASHER	C' STL - ZN PLT	
144	30	COMM 1/2" (NOM) FLAT WASHER	C' STL - ZN PLT	
64	29	COMM 1/2-13UNC-2A x 3 1/4" LG HEX HD CAP SCR	C' STL - ZN PLT	
4	28	COMM 1/2-13UNC-2A x 1 3/4" LG HEX HD CAP SCR	C' STL - ZN PLT	
16	27	COMM 1/2-13UNC-2A x 1" LG HEX HD CAP SCR	C' STL - ZN PLT	
4	26	COMM 3/8-16UNC-2B HEX NUT	C' STL - ZN PLT	
10	25	COMM 3/8" SPLIT LOCK WASHER	C' STL - ZN PLT	
14	24	COMM 3/8" (NOM) FLAT WASHER	C' STL - ZN PLT	
6	23	COMM 3/8-16UNC-2A x 1 3/4" LG HEX HD CAP SCR	C' STL - ZN PLT	
4	22	COMM 3/8-16UNC-2A x 1 1/2" LG HEX HD CAP SCR	C' STL - ZN PLT	
1	21	COMM 5/16" NOM SQ. KEY x 4" LG	C' STL	
6	20	COMM 3/4" CONCRETE ANCHOR BOLT/NUT 5 1/2" LG	STEEL	
2	19	COMM HOIST RING - 10,000# CAP. McMASTER-CARR #3145T34 OR EQUIV.	STEEL	
1	18	COMM HANDWHEEL WITH HANDLE - 5/8" BORE x 12" O.D. McMASTER-CARR #6026K159 OR EQUIV.	CAST IRON	
1	17	COMM QUICK RELEASE PIN - Ø1/2" x 1.4" LG GRIP McMASTER-CARR #98320A494 OR EQUIV.	ZN PLT ST'L	
2	16	COMM LOCKING COLLAR - 1 1/4" I.D. x 2 1/16" O.D. x 1/2" W McMASTER-CARR #6435K21 OR EQUIV.	STEEL	
1	15	COMM WORM GEAR - 4 PITCH 48 TEETH 12,000 P.D	CAST IRON	
1	14	COMM WORM - 3" P.D. RIGHT HAND	STEEL	
2	13	COMM BUSHING - 1.250 I.D. x 1.4062 O.D. x 1.00 LG	BRONZE	
1	12	SE184-003-3 WORM AXLE	SEE DWG	
2	11	SE184-003-2 WORM AXLE SUPPORT BLOCK	SEE DWG	
2	10	SE184-003-1 PORT 12 BLANK-OFF COVER	SEE DWG	
2	9	SE184-002-08 AXLE LOCKING CAP	SEE DWG	
1	8	SE184-002-07 WORM GEAR AXLE WELDMENT	SEE DWG	
1	7	SE184-002-06 WORM SUPPORT BRACKET WELDMENT	SEE DWG	
1	6	SE184-002-05 SUPPORT AXLE WELDMENT - TYPE "B"	SEE DWG	
1	5	SE184-002-04 SUPPORT AXLE WELDMENT - TYPE "A"	SEE DWG	
2	4	SE184-002-03 AXLE CRADLE WELDMENT	SEE DWG	
1	3	SE184-002-02 SUPPORT STAND WELDMENT - WITH BRACKET	SEE DWG	
1	2	SE184-002-01 SUPPORT STAND WELDMENT - WITHOUT BRACKET	SEE DWG	
1	1	SE120-002 120" VACUUM VESSEL SEGMENT	SEE DWG	
1	—	THIS DWG FIXTURE ASSEMBLY	—	1

QTY	PART NO.	DESCRIPTION	MATERIAL	QTY REQD
1	—	THIS DWG	—	1

COMPUTER GENERATED DRAWING. MANUAL CHANGES NOT PERMITTED	CENTRAL FILES:	PRINCETON PLASMA PHYSICS LABORATORY	
Pro E	UNLESS OTHERWISE SPECIFIED	NATIONAL COMPACT STELLARATOR EXPERIMENT	
DO NOT VERIFY INFORMATION BY SCALING DRAWING	DIMENSIONS ARE IN INCHES MACHINE SURFACES UNLESS OTHERWISE SPECIFIED	EXTERNAL FLUX LOOPS VACUUM VESSEL SUPPORT STAND FIXTURE ASSEMBLY	
NEXT ASSEMBLY	TOLERANCES NON-CUMULATIVE	DSN: L. MORRIS	DRAWING NO: SE184-001
WELDING ENGINEER	DECIMAL - INCH FRACTIONS	CHK: ENGR. T. BROWN	SHEET 1 OF 1
	.XX ±.030 12"-12" ±.010	SUPV:	REV
	.XXX ±.005 12"-120" ±.010		
	ANGULAR ±.015 OVER 120" ±.10		

RELEASE LEVEL: WIP
DWG VERSION NO: 1

WEIGHT
1238.5 lbs

MODEL NAME
SE184-001-01

NCSX-SE184-001