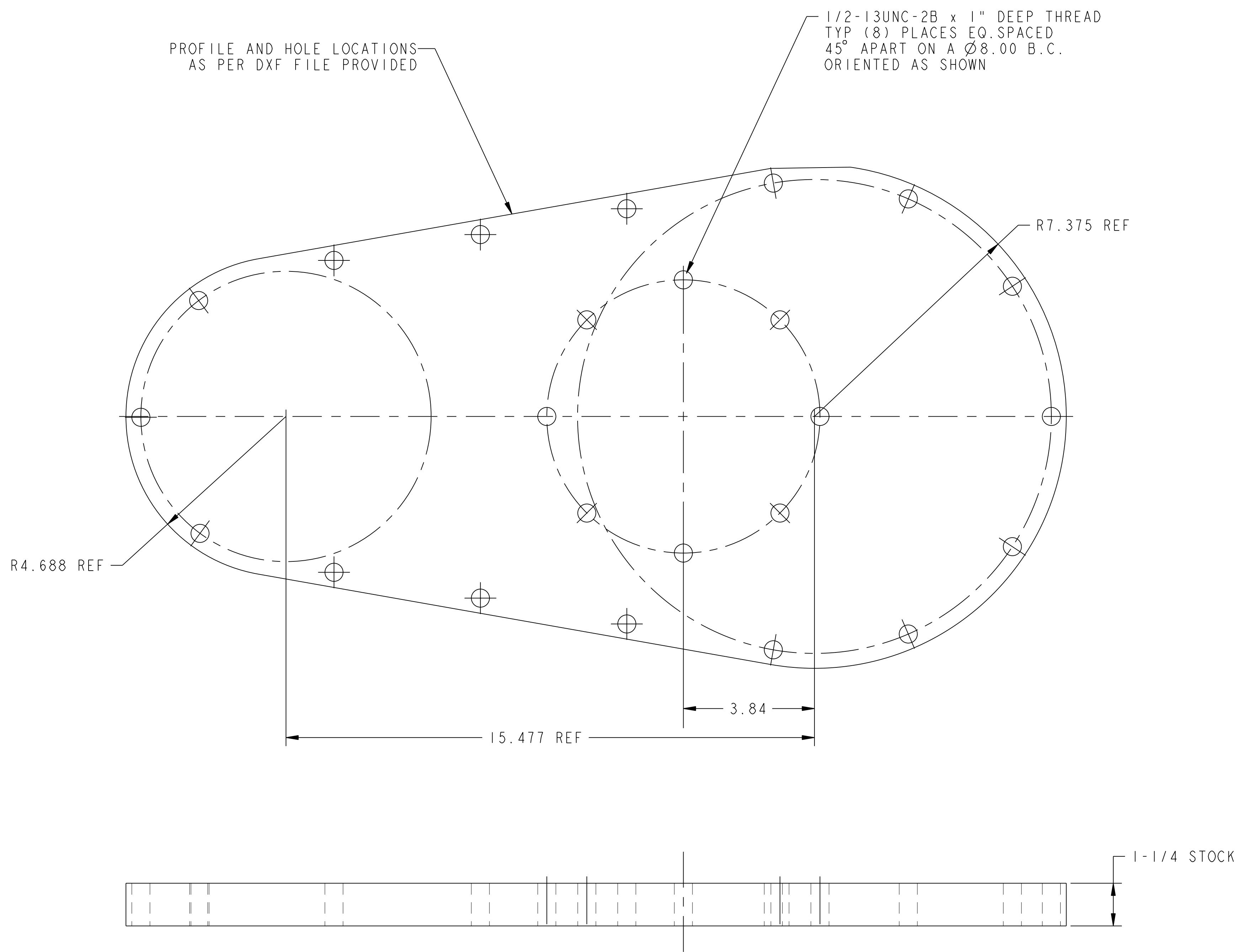
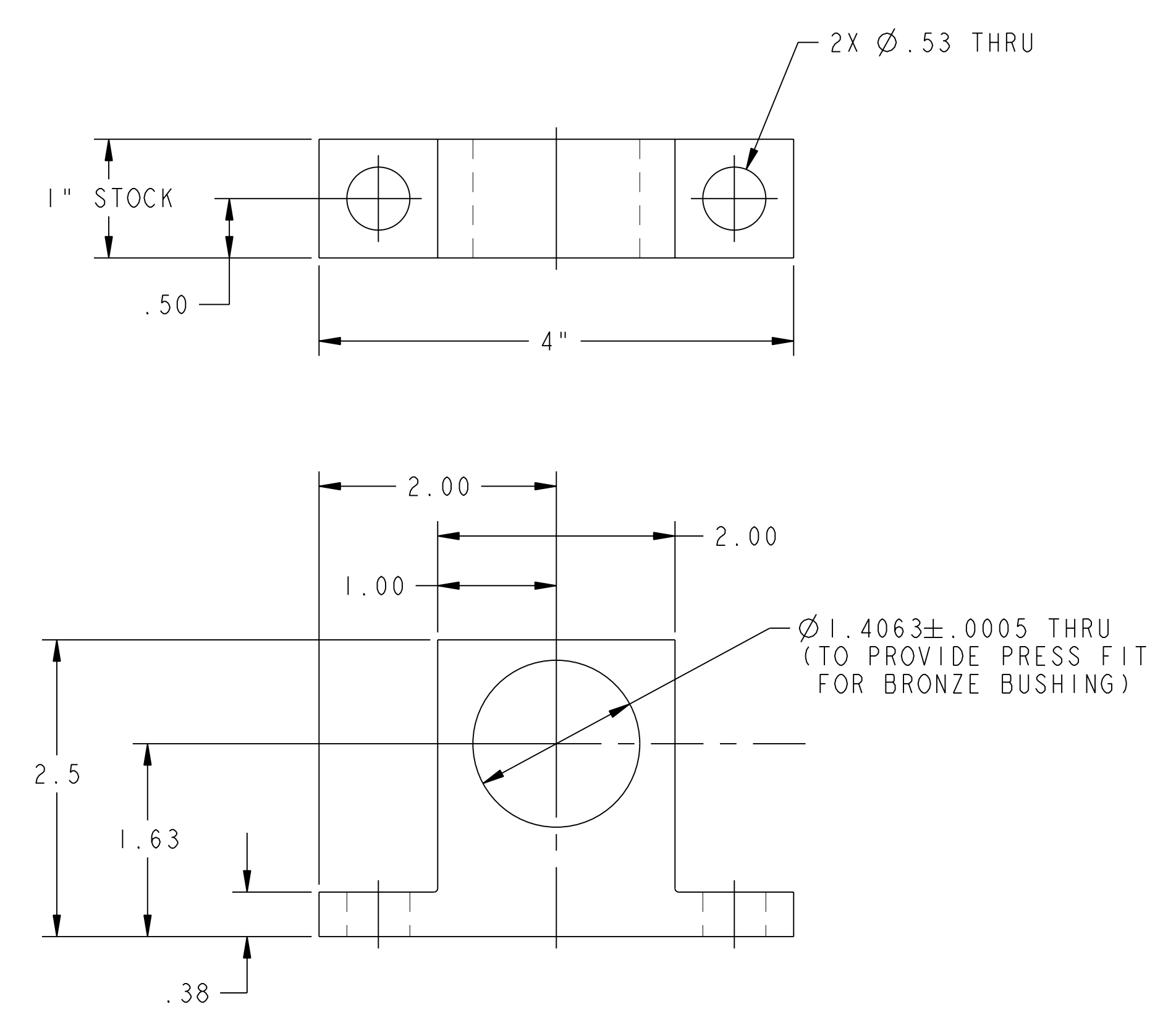


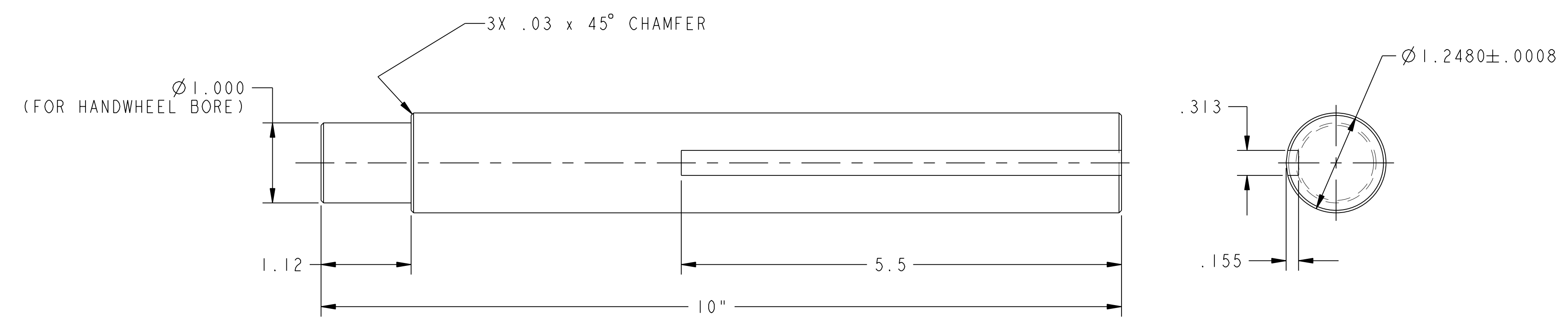
NO.	REVISION	BY	CH	SUP	APPROVED	DATE



1 PORT 12 BLANK-OFF COVER



2 WORM AXLE SUPPORT BLOCK



3 WORM AXLE

PART NO.	DRAWING NO	NOMENCLATURE OR DESCRIPTION	MATERIAL	QTY RECD
3	THIS DWG	WORM AXLE	ASTM A36	1
2	THIS DWG	WORM AXLE SUPPORT BLOCK	ASTM A36	2
1	THIS DWG	PORT 12 BLANK-OFF COVER	ASTM A36	2

PARTS LIST

COMPUTER GENERATED DRAWING MANUAL CHANGES NOT PERMITTED Pro E	CENTRAL FILES: UNLESS OTHERWISE SPECIFIED	PRINCETON PLASMA PHYSICS LABORATORY PRINCETON UNIVERSITY NATIONAL COMPACT STELLARATOR EXPERIMENT	
DO NOT VERIFY INFORMATION BY SCALING DRAWING	DIMENSIONS ARE IN INCHES MACHINE SURFACES BREAK SHARP EDGES .005/.020	EXTERNAL FLUX LOOPS VACUUM VESSEL SUPPORT STAND FIXTURE ASSEMBLY DETAILS	
NEXT ASSEMBLY	TOLERANCES NON-CUMULATIVE DECIMAL-INCH FRACTIONS .XX ±.000 0°-120° ±.1/16 .XXX ±.005 72°-120° ±.1/16 ANGULAR ±.0°-15° OVER 120° ±.1/16	DSN: L. MORRIS CHK: ENGR: T. BROWN SUPV:	DRAWING NO: SE184-003

RELEASE LEVEL: WIP
DWG VERSION NO: 1

WEIGHT
116.0 lbs
MODEL NAME
SE184-003-3
WELDING ENGINEER

NCSX-SE184-003