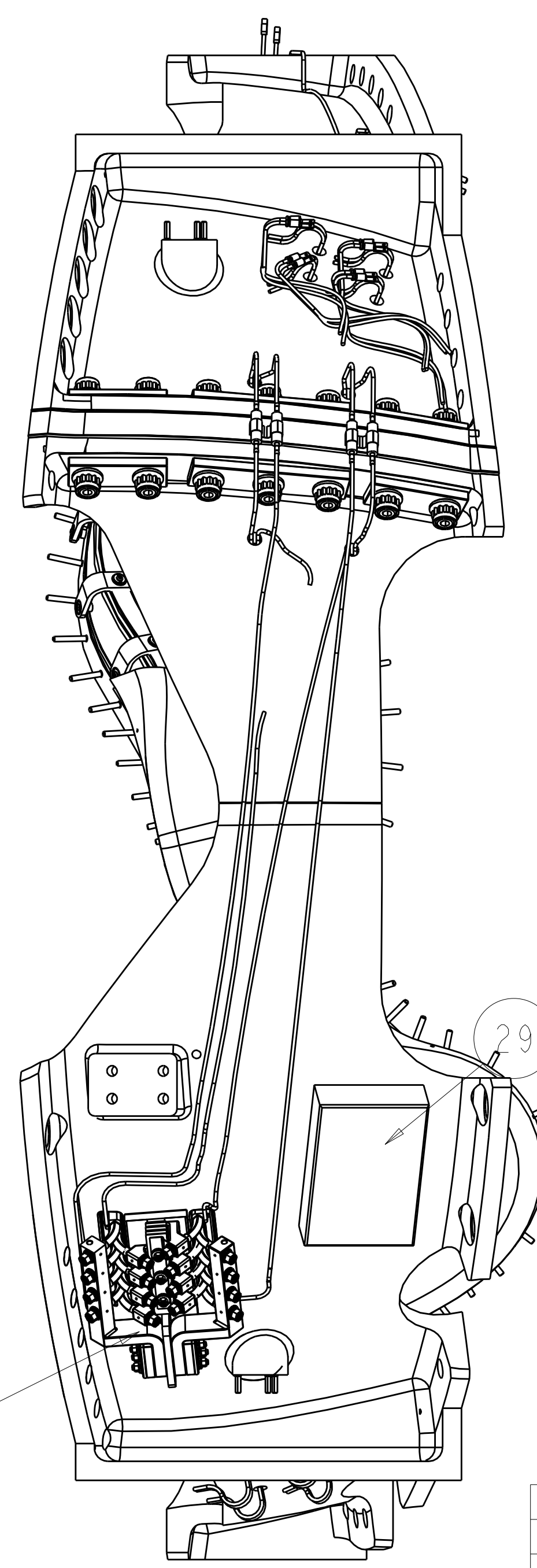
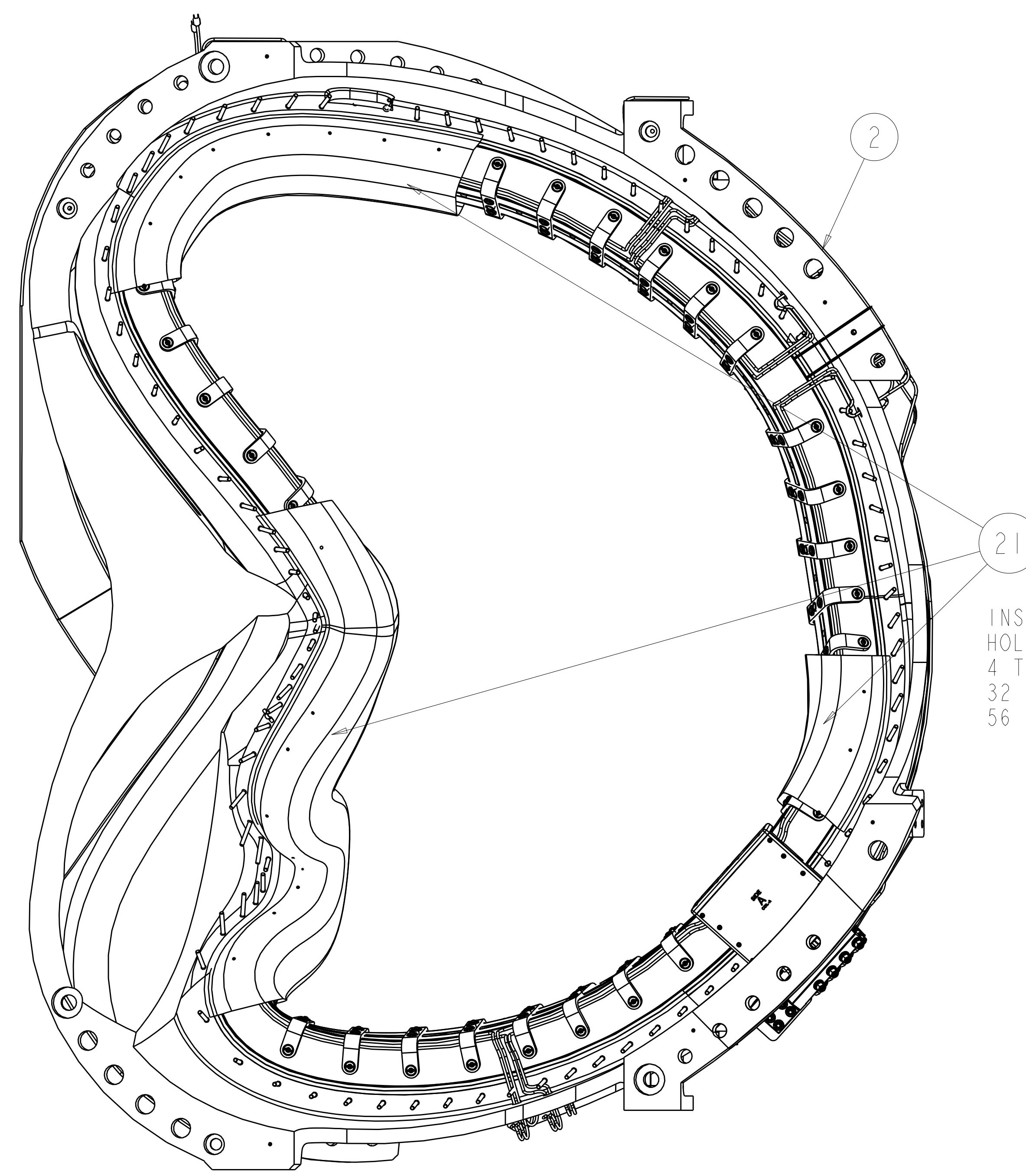
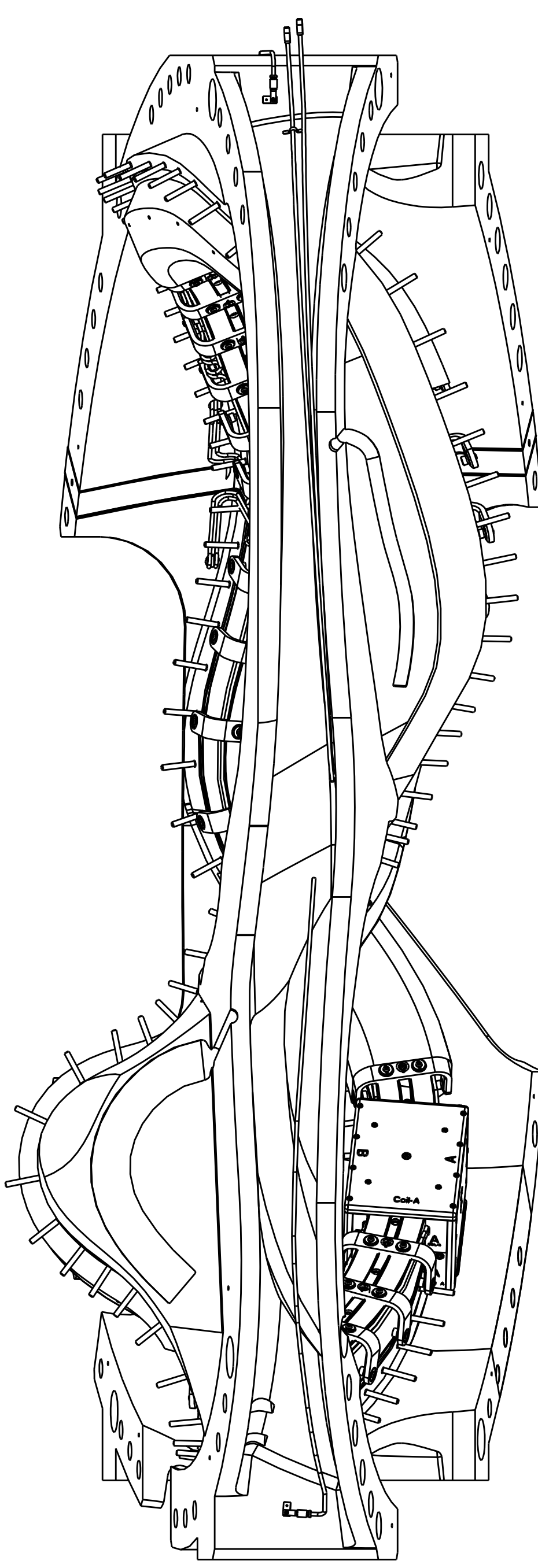
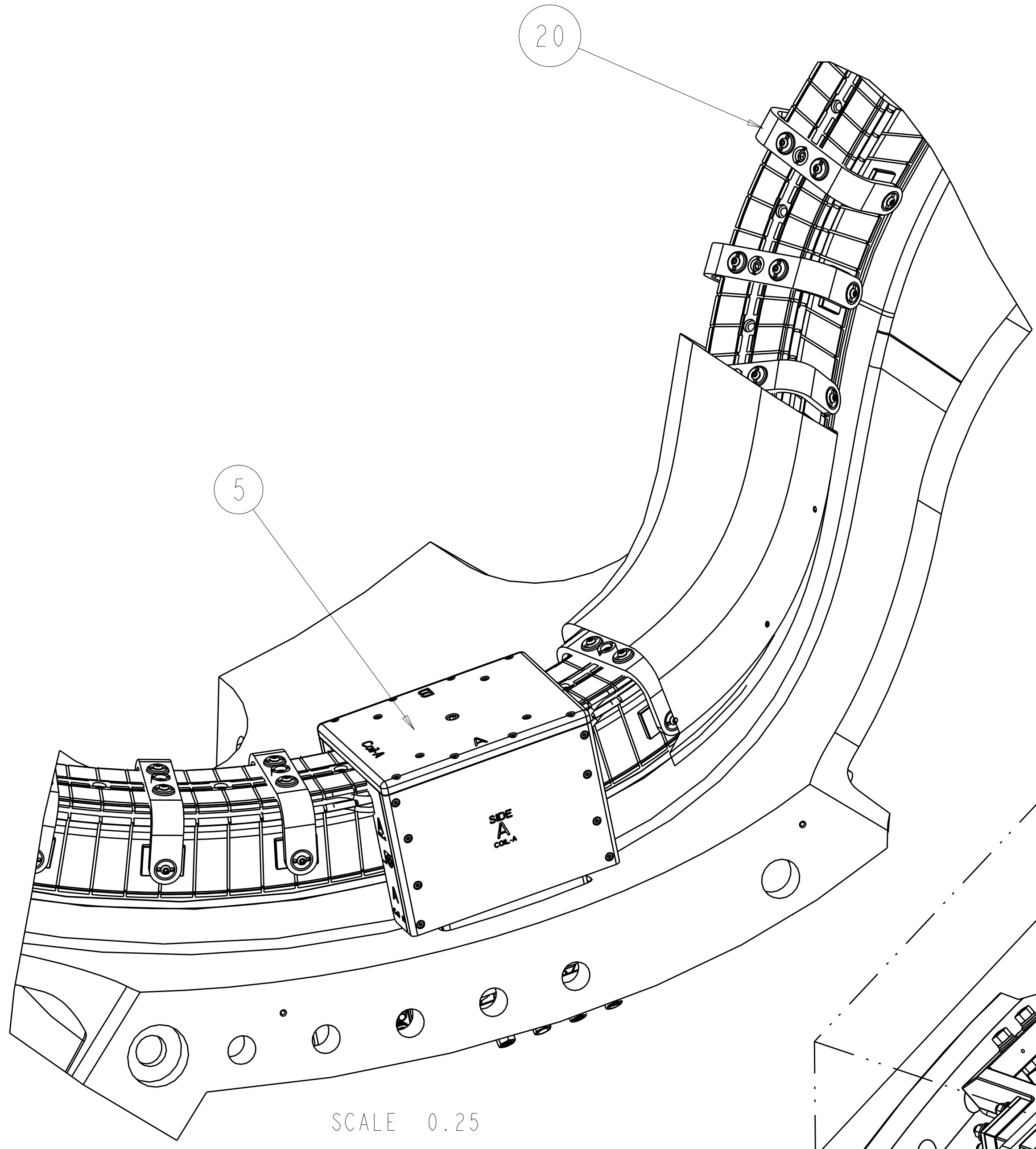


- NOTES:
- DRAWING PREPARED IN ACCORDANCE WITH ASME Y14.100-2000.
 - INTERPRET DIMENSIONS AND TOLERANCES PER ANSI Y14.5M
 - DIMENSIONS ARE IN INCHES
 - DIMENSIONS APPLY AT ROOM TEMPERATURE. OPERATING TEMP 80 K.
 - LEADS AREA SHALL BE COVERED OR SPRAYED WITH AN INSULATING MATERIAL TO PREVENT DEBRIS FROM CAUSING AN ELECTRICAL SHORT DURING OPERATION.
 - VENDOR INFORMATION: ASPEN AEROGEL
NORTHBOROUGH, MA 01532
WWW.AEROGEL.COM
508-691-1111
 - SEE LATEST REVISION OF PROCEDURE D-NCSX-MCF-001 FOR ADDITIONAL REQUIREMENTS.
 - WELDING SHALL BE PERFORMED IN ACCORDANCE WITH THE REQUIREMENTS OF PPPL PROCEDURE NO. ENG-037. VISUAL WELD INSPECTION SHALL BE PERFORMED IN ACCORDANCE WITH THE ACCEPTANCE CRITERIA OF AWS D1.6.
 - VENDOR INFORMATION: TRULY TUBULAR FITTING CORP
PO BOX 1160
MT VERNON, NY 10550
914-664-8686 OR WWW.TRULYTUBULAR.COM
 - VENDOR INFORMATION: FISO FIBER OPTICS
500 ST. JEAN BAPTISTE AVE SUITE 195
QUEBEC QC, G2E 5R CANADA
418-688-8065 OR WWW.FISO.COM
 - VENDOR INFORMATION: OMEGA ENGINEERING CORP
ONE OMEGA DRIVE
STAMFORD, CT 06907
800-848-4286 OR WWW.OMEGA.COM
 - SOME PARTS IN THIS ASSEMBLY ARE GRAPHIC REPRESENTATIONS OF ACTUAL PARTS/ASSEMBLIES. PART IDENTIFICATION NUMBERS REFER TO ACTUAL PARTS. FOR FULL MODELED ASSEMBLY SEE SE140-102.
 - TYPE "A" COIL: REMOVE NOTED STUDS AFTER CLAMP AND INSULATION BLANKETS ARE ASSEMBLED (POST VPI).
 - MAGNETIC PERMEABILITY NOT TO EXCEED 1.02 AS TESTED BY A SEVERN INDICATOR AVAILABLE FROM:
SEVERN ENGINEERING
555 OLD STAGE ROAD SUITE 14
AUBURN, ALABAMA 36830

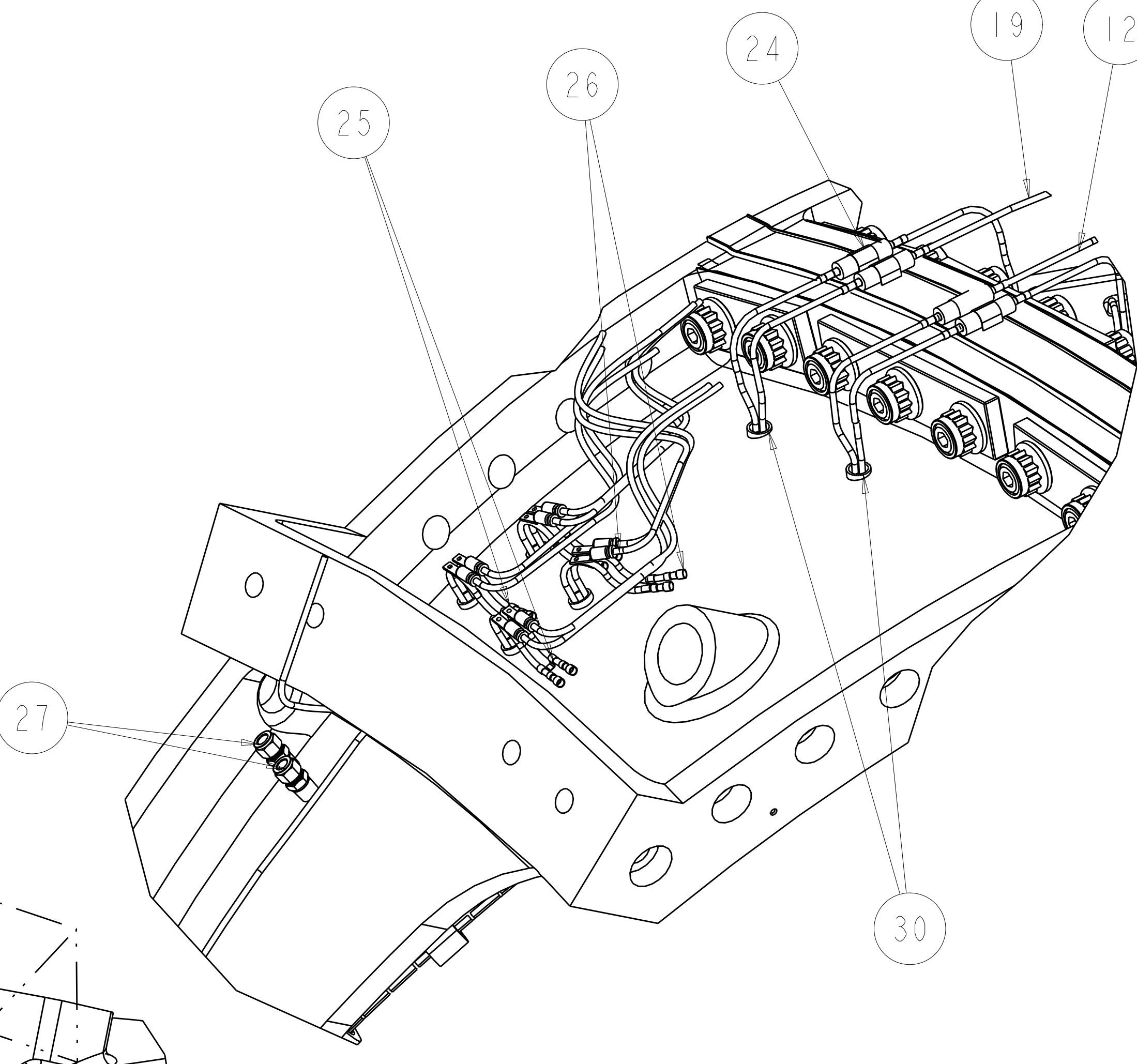


INSULATE BETWEEN HOLE LOCATIONS:
4 TO 11
32 TO 46
56 TO 79

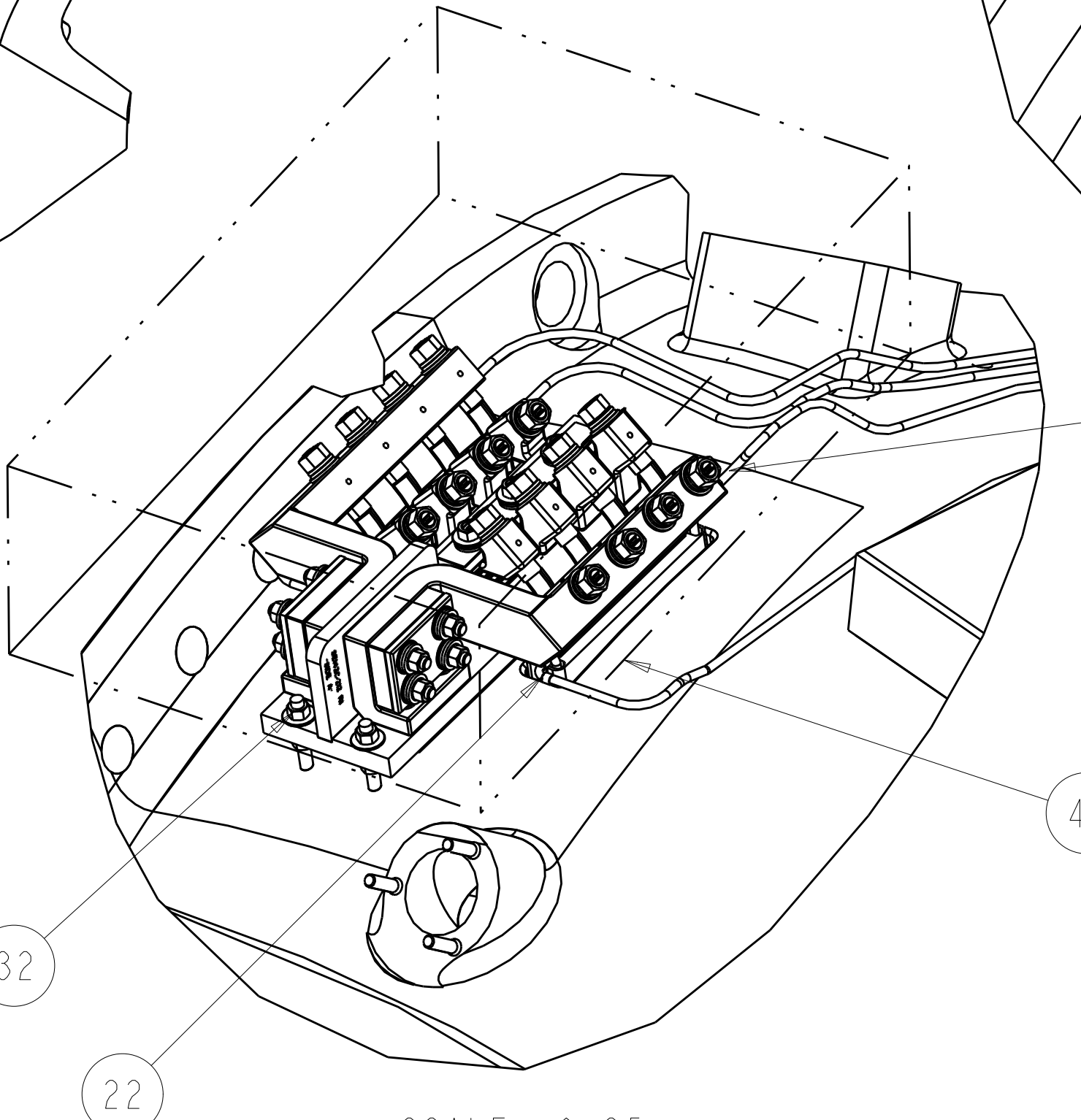
SCALE 0.13



SCALE 0.25



SCALE 0.25



SCALE 0.25

REV	DESCRIPTION	BY	DATE	CHK	DEPT	DATE	PE	REQ	DATE	ORNL	DOE	DATE
0	ORIGINAL ISSUE	GL	06/01									
1	REVISION OR ISSUE PURPOSE											

REV	DESCRIPTION	BY	DATE	CHK	DEPT	DATE	PE	REQ	DATE	ORNL	DOE	DATE
0	ORIGINAL ISSUE	GL	06/01									
1	REVISION OR ISSUE PURPOSE											

AR	CAGE CODE	PART OR IDENTIFYING NO	NOMENCLATURE OR DESCRIPTION	MATERIAL	SPECIFICATION	FIND NO
AR		SE142B-030	WIRE CLAMP			42
1		-41	PROTECTIVE COVER	PLASTIC		41
AR		SE142C-306	LOCKING TAB			40
2		SE123-155	THERMOCOUPLER MTG BLOCK			39
1		NCSX-PRL-003	THERMOCOUPLE - SURFACE - LEADS 130"			38
2			THERMOCOUPLE - PLUG - LEADS 194"			37
2			THERMOCOUPLE - SURFACE - LEADS 120"			36
8			THERMOCOUPLE - SURFACE - LEADS 74"			35
1			THERMOCOUPLE - SURFACE - LEADS 218"			34
2		91735A46	PAN HEAD SCREW	316 SST		33
4		9195A031	3/8 FLAT WASHER	316 SST		32
4		94819A049	3/8 - 16UNC HEX NUT	316 SST		31
12		SE142C-014	LINED INSULATING SLEEVE			30
1		SE142C-015	3"x8"x12" FLUX LOOP BOX			29
AR		SE142C-013	FISO FIBER OPTIC STRAIN SENSOR			28
2		SS-810-1-8	BLEED VALVE			27
16		SFF-5-4	TRULY TUBULAR FITTING	BRAZETYTE		26
AR		SE142C-011	TUBE CLAMP			25
2		SE140-025	POL BR CONNECTOR ASSEMBLY			24
2		90FF-4	TRULY TUBULAR 1/4 ELBOW	BRAZETYTE		23
2		10FF-4	TRULY TUBULAR 1/4 UNION	BRAZETYTE		22
AR		-21	WINDING FORM INSULATION ASSY	1/8" NOMEX		21
43		SE142A-010	CLAMP ASSEMBLY			20
AR		SE142A-248	SIDE B COOLING TUBES	COPPER TUBING		19
1		SE142A-246-4	SIDE "B" CHILL PLATES (SIDE)			18
1		SE142A-246-3	SIDE "B" UPPER CHILL PLATES (TOP)			17
AR		SE142A-243	SIDE "B" GROUNDWRAP			16
1		SE142A-241	SIDE "B" WINDING ASSEMBLY			15
1		SE142A-244-4	SIDE "B" LOWER CLADDING (BASE)			14
1		SE142A-244-3	SIDE "B" UPPER CLADDING (SEPTUM)			13
AR		SE142A-258	SIDE A COOLING TUBES	COPPER TUBING		12
1		SE142A-256-4	SIDE A LOWER CHILL PLATES (SIDE)			11
1		SE142A-256-3	SIDE A UPPER CHILL PLATES (TOP)			10
AR		SE142A-253	SIDE-A WP GROUNDWRAP			9
1		SE142A-251	SIDE "A" WINDINGS ASSEMBLY			8
1		SE142A-254-4	SIDE "A" LOWER CLADDING (BASE)			7
1		SE142A-254-3	SIDE "A" UPPER CLADDING (SEPTUM)			6
1		SE142A-080	TYPE "A" LEADS ASSEMBLY			5
1		SE142C-050	TYPE "A" TERMINAL ASSEMBLY			4
1		SE141-121	STUDS (SEE SHT 2)			3
1		SE141-101	MOD COIL WINDING FORM ASSEMBLY TYPE-A			2
AR		-1	MCWF-TYPE A ASM			1

SE140-101 PARTS LIST

NO REPRESENTATION OR WARRANTY, EXPRESSED OR IMPLIED, IS MADE AS TO THE ACCURACY, COMPLETENESS OR USEFULNESS OF THE INFORMATION OR STATEMENTS CONTAINED IN THESE DRAWINGS, OR THAT THE USE OR DISCLOSURE OF ANY INFORMATION, APPARATUS, METHOD OR PROCESS DISCLOSED IN THESE DRAWINGS MAY NOT INFRINGE PRIVATE RIGHTS OF OTHERS. NO LIABILITY IS ASSUMED WITH RESPECT TO THE USE OF, OR FOR DAMAGES RESULTING FROM THE USE OF, ANY INFORMATION, APPARATUS, METHOD OR PROCESS DISCLOSED IN THESE DRAWINGS. DRAWINGS MADE AVAILABLE FOR INFORMATION TO BIDDER ARE NOT TO BE USED FOR OTHER PURPOSES, AND ARE TO BE RETURNED UPON REQUEST OF THE FORWARDING CONTRACTOR.

P THIS DRAWING PRODUCED ON PRO-ENGINEER

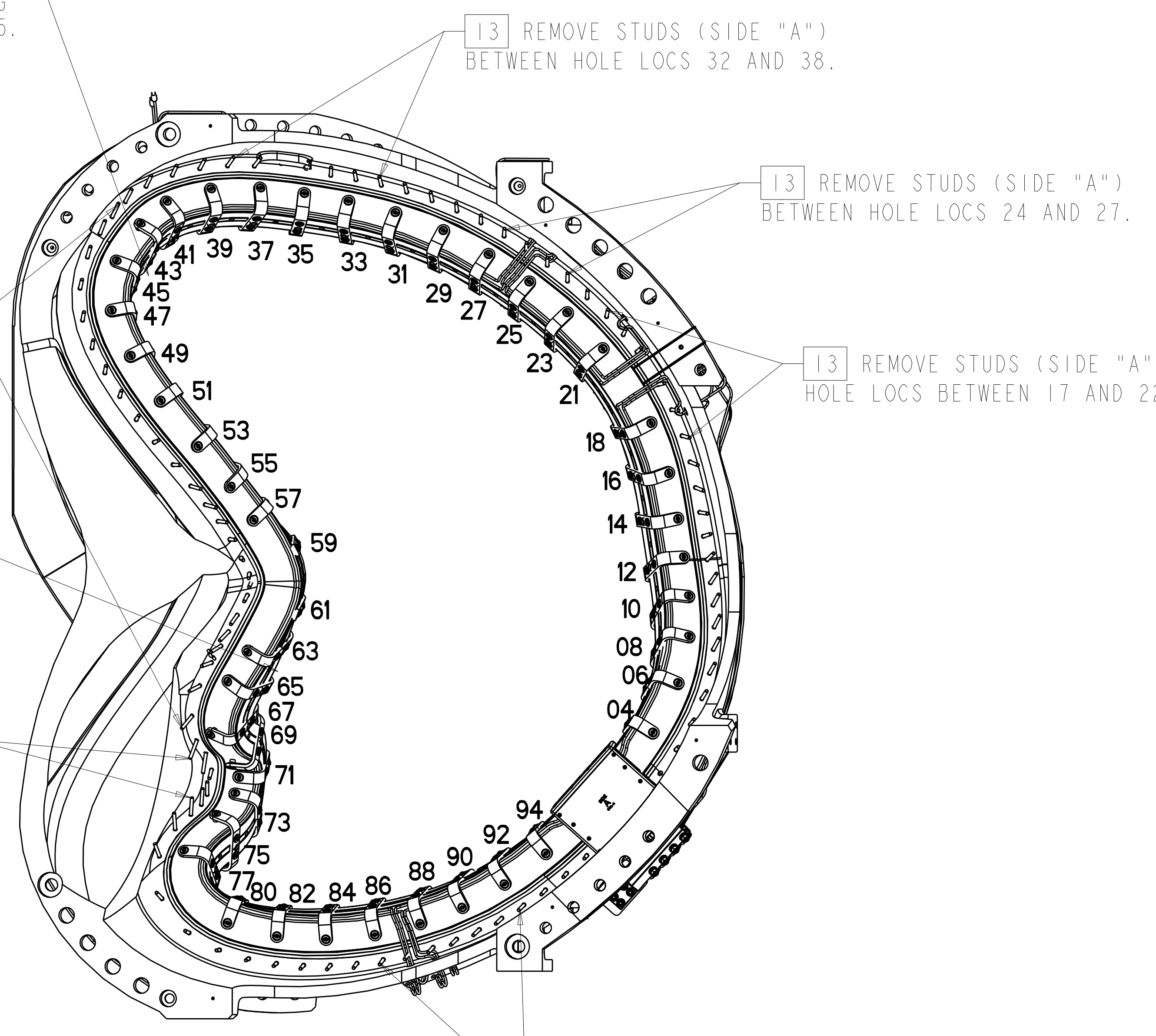
SCALE NOTED

DES: D WILLIAMSON 07/07
DRW: S HOMESCU 07/07
CHK: M COLE 07/07
SECT: :
DEPT: :
PE: D WILLIAMSON 07/07
CR: :
PJ: :
RD: :
PPPL DRFT J SIEGLE 07/07
DRFT: :
DRAWING APPROVALS: DATE

Oak Ridge National Laboratory managed for the DEPARTMENT OF ENERGY under UT-BATTELLE contract DE-AC05-00OR22725 UT-BATTELLE, LLC. Oak Ridge, Tennessee
PROJECT NAME: NATIONAL COMPACT STELLARATOR EXPERIMENT
MCWF TYPE "A" FULL COIL ASSEMBLY

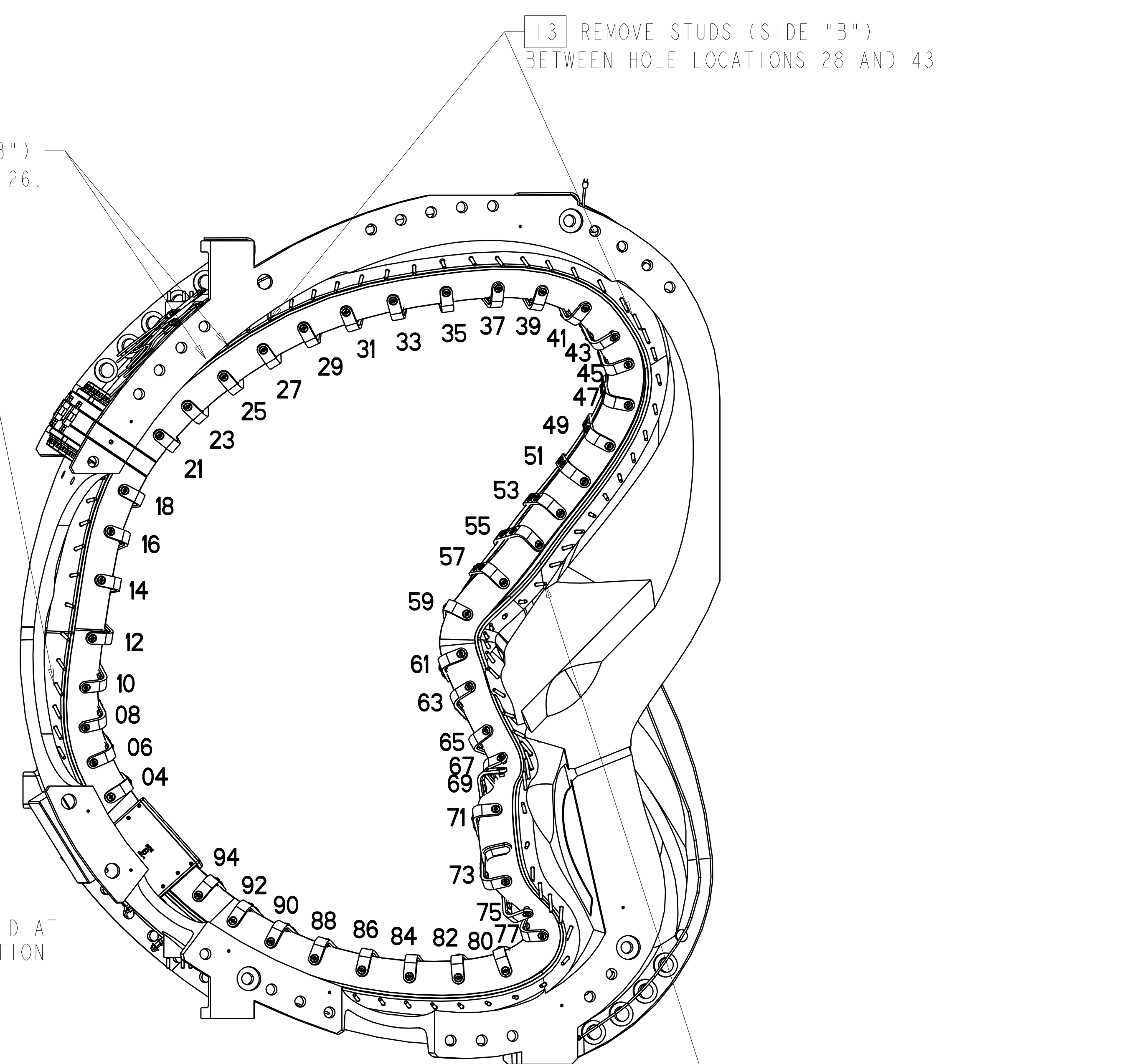
VERSION NO. 55 PLANT ORNL BLDG 5700 FL 3 SHT OF 3 TYPE U CLASS U
RELEASE LEVEL WIP SE140-101 REV 0

SUGGESTED LOCATION FOR CONCENTRATED STRAIN SENSORS
 ALIGN SENSORS ON LAST FIELD PERIOD ASSEMBLY ON WINDING
 LAW PLANE BETWEEN HOLE 43-45.



SIDE "A" VIEW
 SCALE 0.100
CLAMP / HOLE NUMBER LOCATIONS

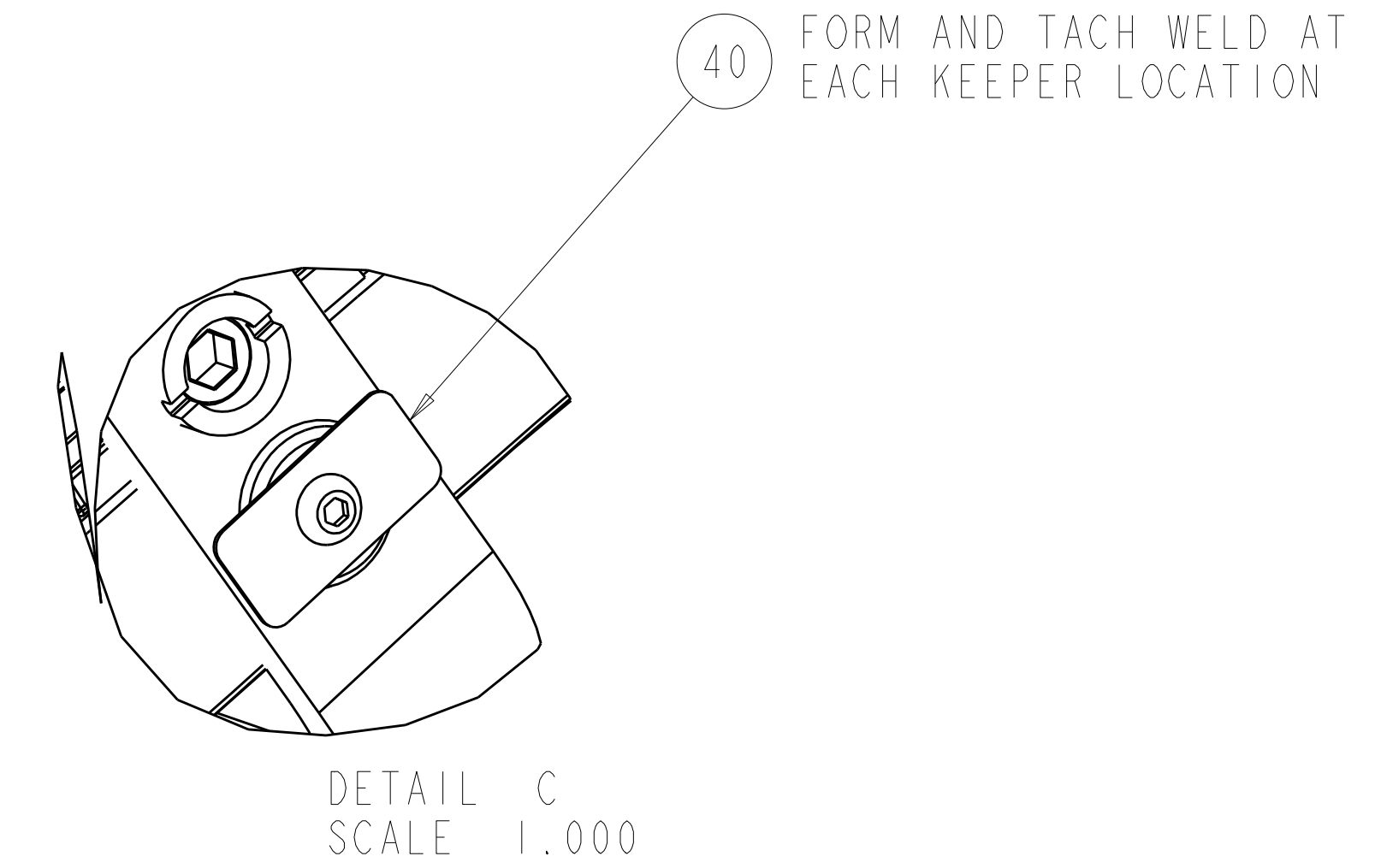
13 REMOVE STUDS (SIDE "B")
 AT HOLE LOCATIONS 25 AND 26.



SIDE "B" VIEW
 SCALE 0.100
CLAMP / HOLE NUMBER LOCATIONS

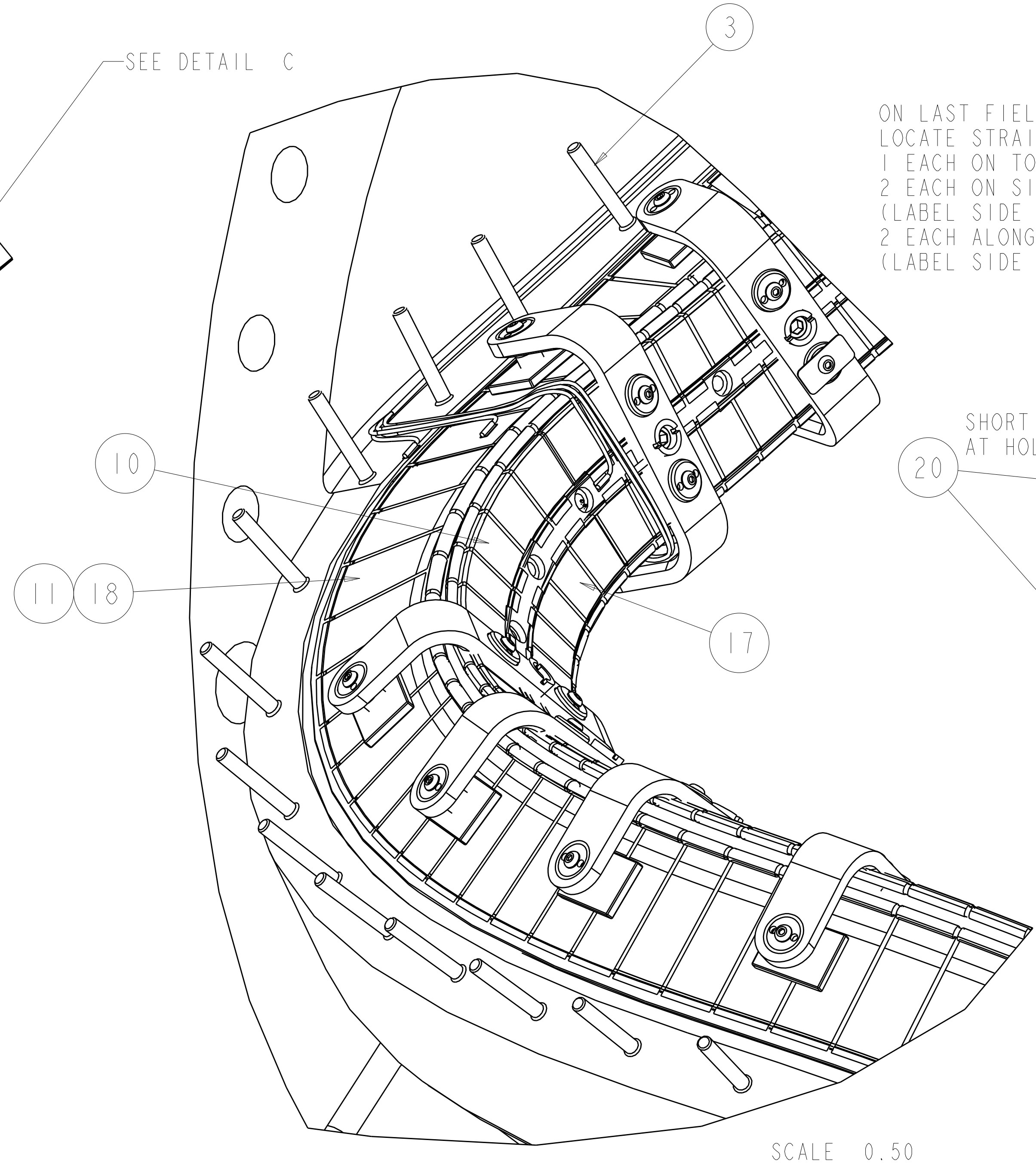
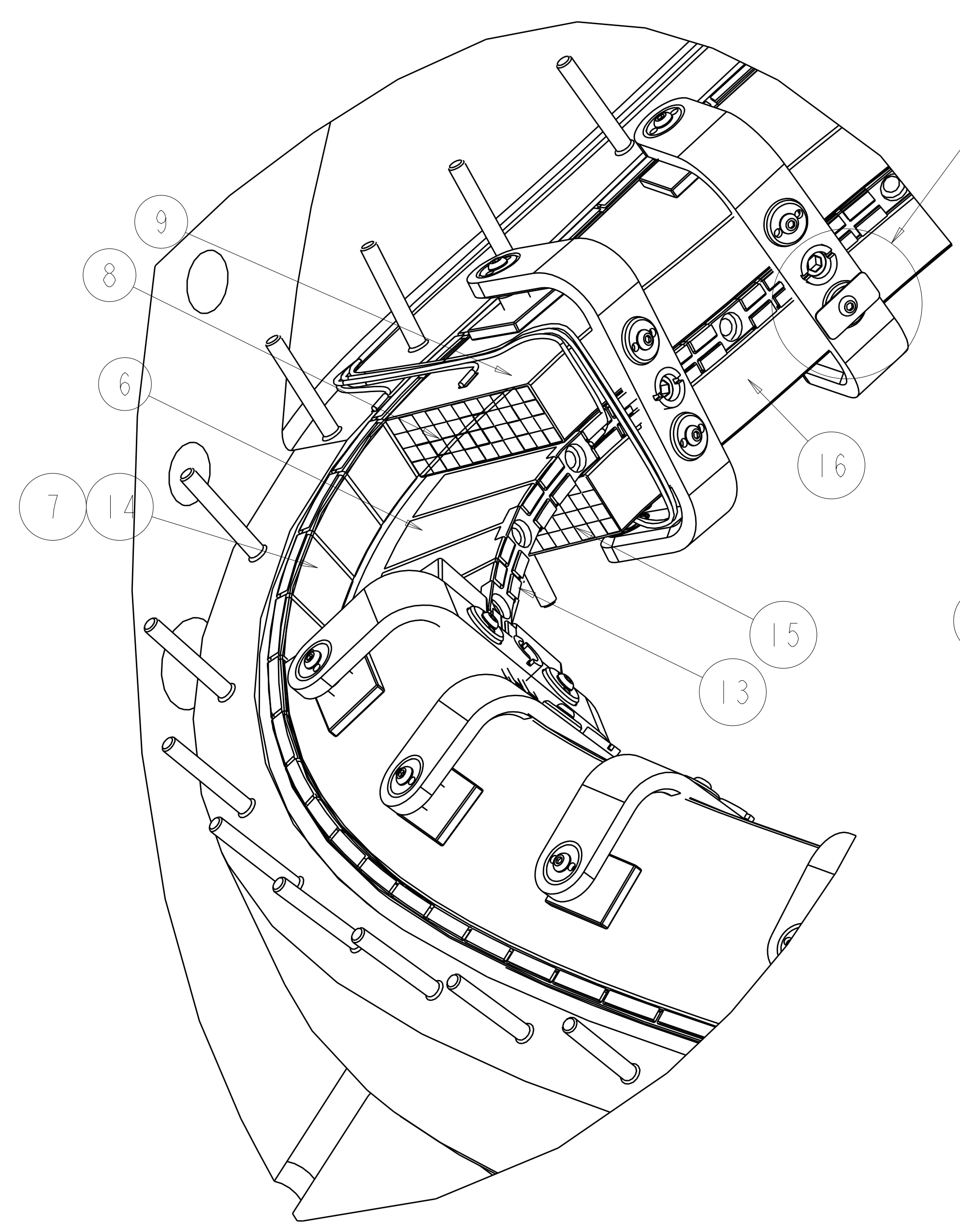
SUGGESTED STRAIN SENSOR PLACEMENT LOCATION
 ON LAST FIELD PERIOD ASSEMBLY
 ON WINDING LAW PLANE BETWEEN HOLE
 LOCATIONS 63-65.

CLAMP CHART		
NO.	HOLE NO.	CLAMP ASSEMBLY
1	04	SE142C-270
2	06	SE142C-270
3	08	SE142C-270
4	10	SE142C-270
5	12	SE142C-270
6	14	SE142C-270
7	16	SE142C-270
8	18	SE142C-270
9	21	SE142C-270
10	23	SE142C-270
11	25	SE142C-270
12	27	SE142C-270
13	29	SE142C-270
14	31	SE142C-270
15	33	SE142C-270
16	35	SE142C-270
17	37	SE142C-270
18	39	SE142C-270
19	41	SE142C-270
20	43	SE142C-270
21	45	SE142C-270
22	47	SE142C-270
23	49	SE142C-270
24	51	SE142C-270
25	53	SE142C-270
26	55	SE142C-270
27	57	SE142C-270
28	59	SE142C-303
29	61	SE142C-303
30	63	SE142C-270
31	65	SE142C-270
32	67	SE142C-270
33	69	SE142C-270
34	71	SE142C-270
35	73	SE142C-270
36	75	SE142C-270
37	77	SE142C-270
38	80	SE142C-270
39	82	SE142C-270
40	84	SE142C-270
41	86	SE142C-270
42	88	SE142C-270
43	90	SE142C-270
44	92	SE142C-270
45	94	SE142C-270

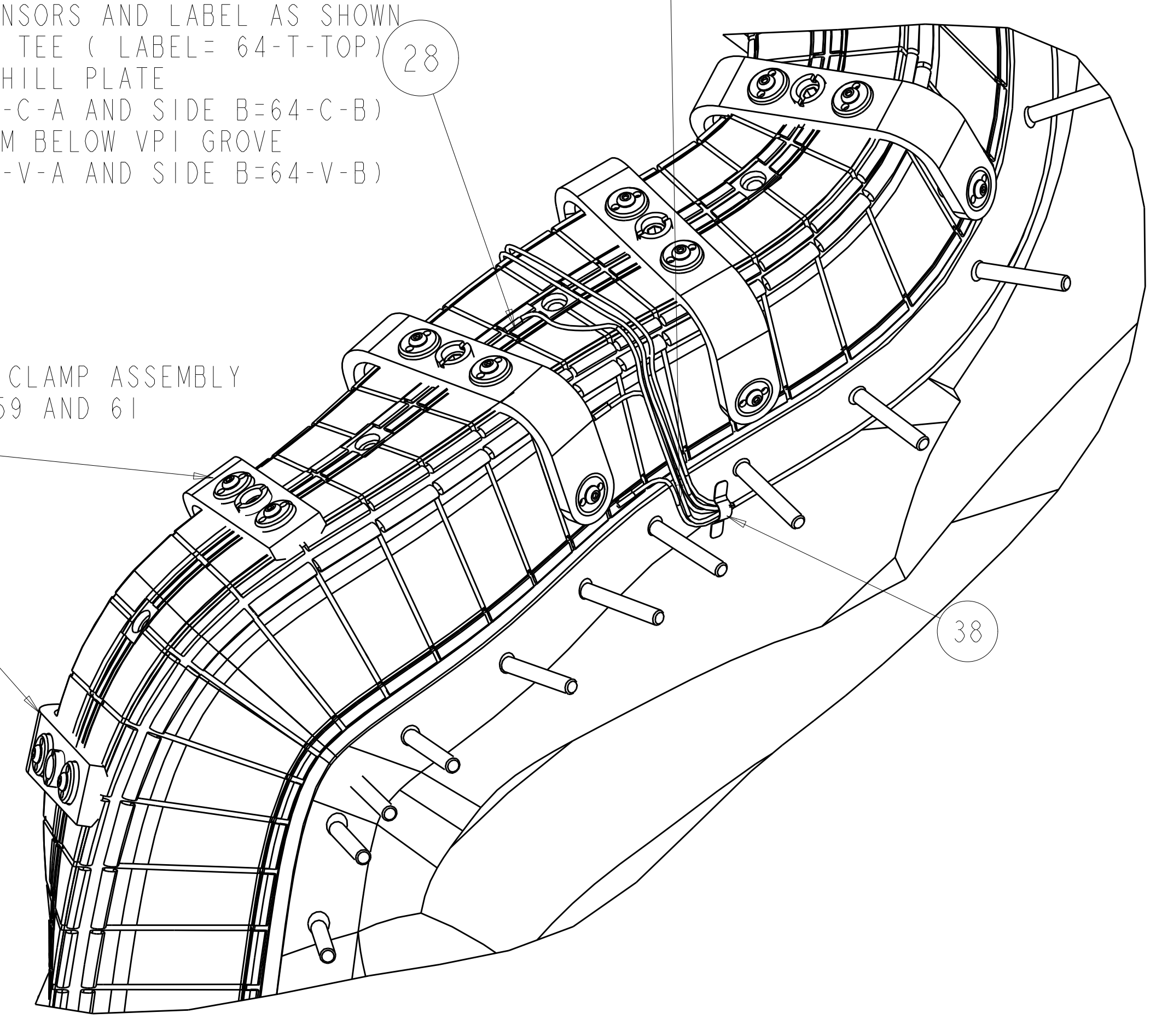


ON LAST FIELD PERIOD ASSEMBLY
 COLOR CODE OR IDENTIFY EACH CABLE WITH
 HOLE NUMBER ASSOCIATED AND LOCATION
 BUNDLE FIBER OPTIC STRAIN SENSOR CABLE
 EXIT COIL WITH COOLING TUBES.

ON LAST FIELD PERIOD ASSEMBLY
 LOCATE STRAIN SENSORS AND LABEL AS SHOWN
 1 EACH ON TOP OF TEE (LABEL= 64-T-TOP)
 2 EACH ON SIDE CHILL PLATE
 (LABEL SIDE A=64-C-A AND SIDE B=64-C-B)
 2 EACH ALONG FORM BELOW VPI GROVE
 (LABEL SIDE A=64-V-A AND SIDE B=64-V-B)



SHORT BAR CLAMP ASSEMBLY
 AT HOLES 59 AND 61



Oak Ridge National Laboratory
 managed for the DEPARTMENT OF ENERGY under
 U.S. GOVERNMENT contract DE-AC05-00OR22725
 UT-BATTELLE, LLC, Oak Ridge, Tennessee

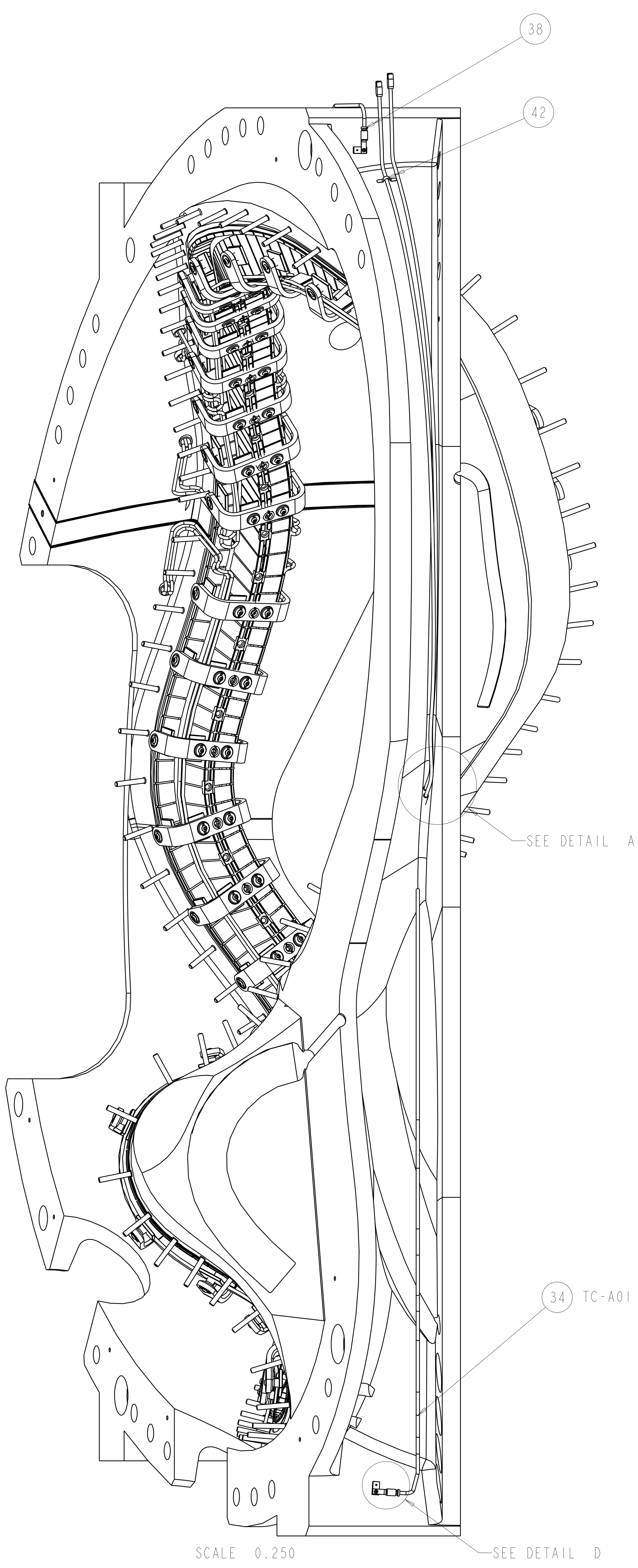
UT-BATTELLE

NATIONAL COMPACT STELLARATOR EXPERIMENT

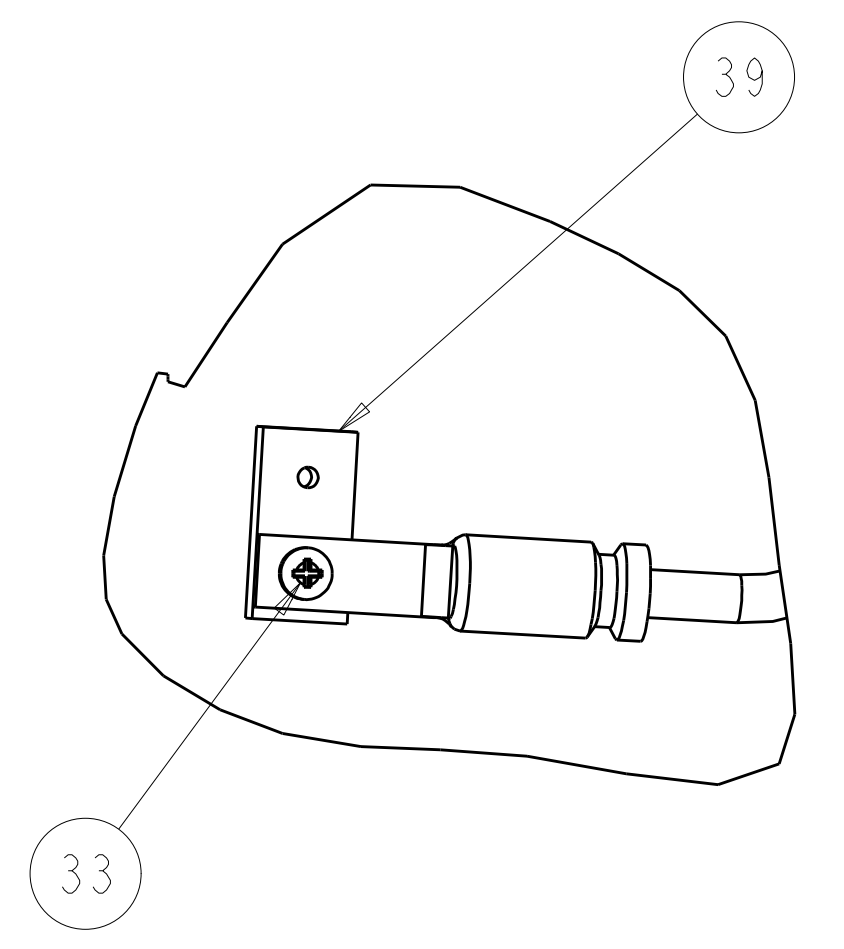
**MCWF TYPE "A"
 FULL COIL ASSEMBLY**

VERSION NO. 69+	PLANT ORNL	BLDG 5700	FL 3	SHT OF 2	TYPE 3	CLASS S
RELEASE LEVEL WIP	SE140-101					REV 0

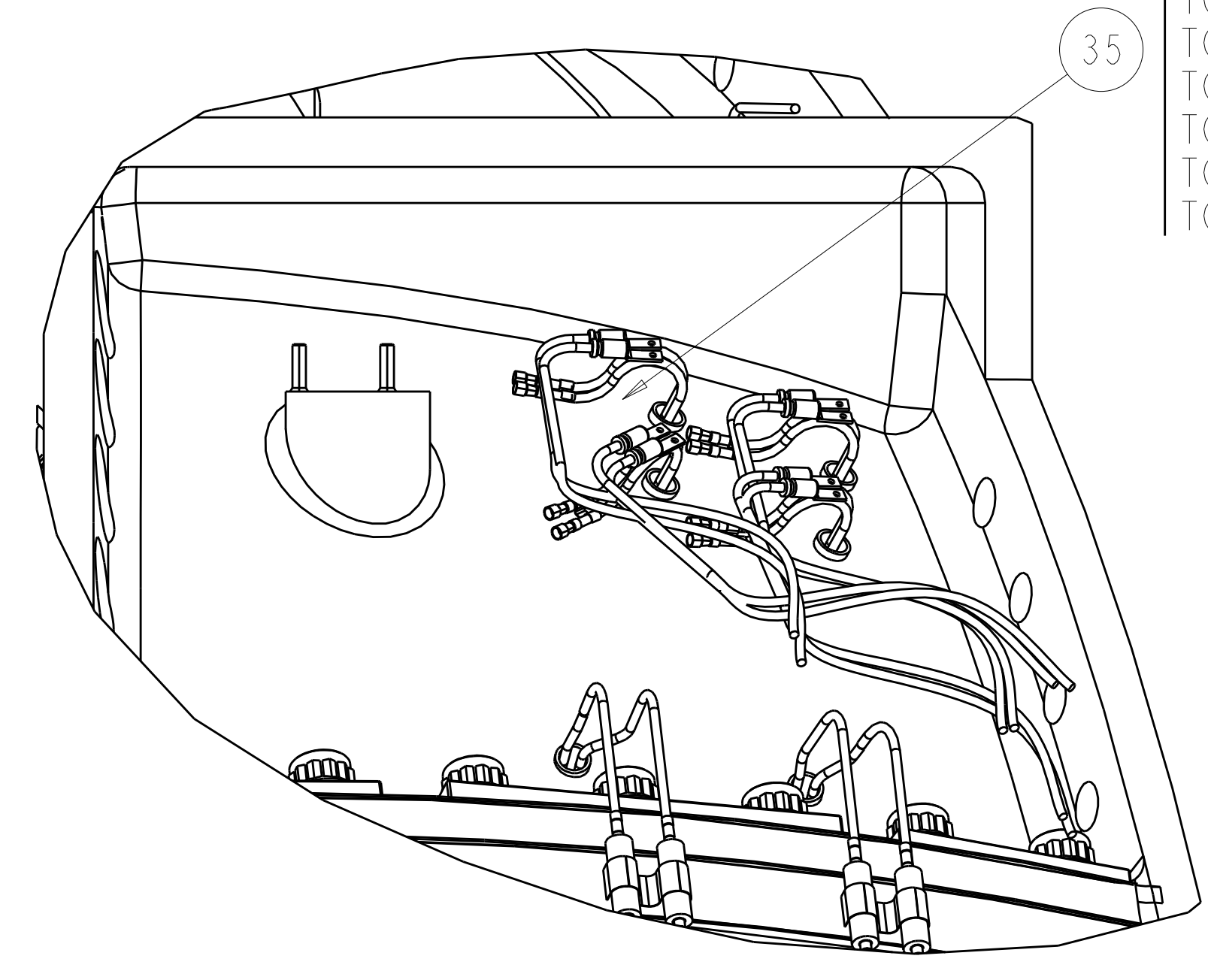
H
G
F
E
D
C
B
A



SCALE 0.250

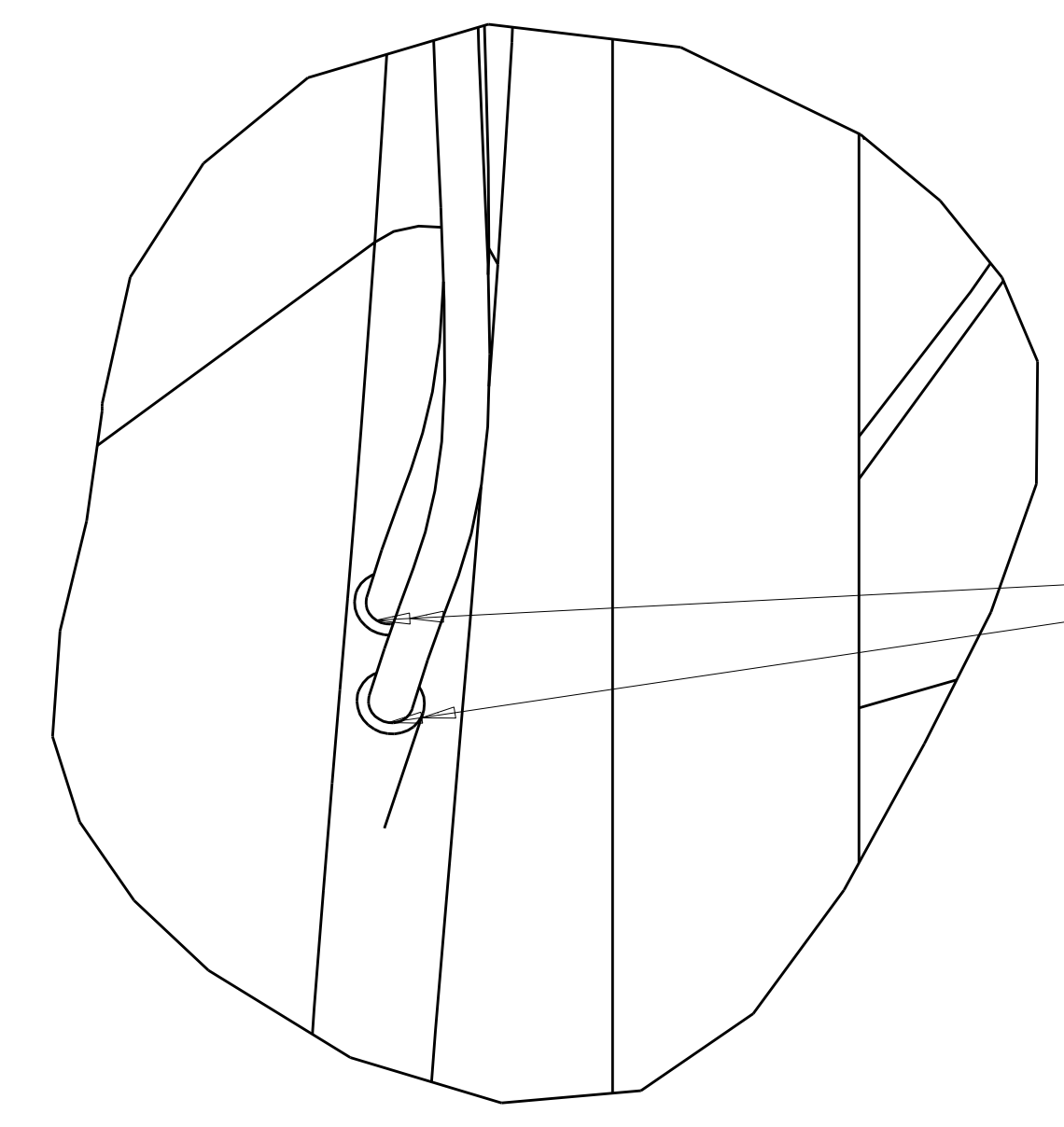


DETAIL D
SCALE 1.000

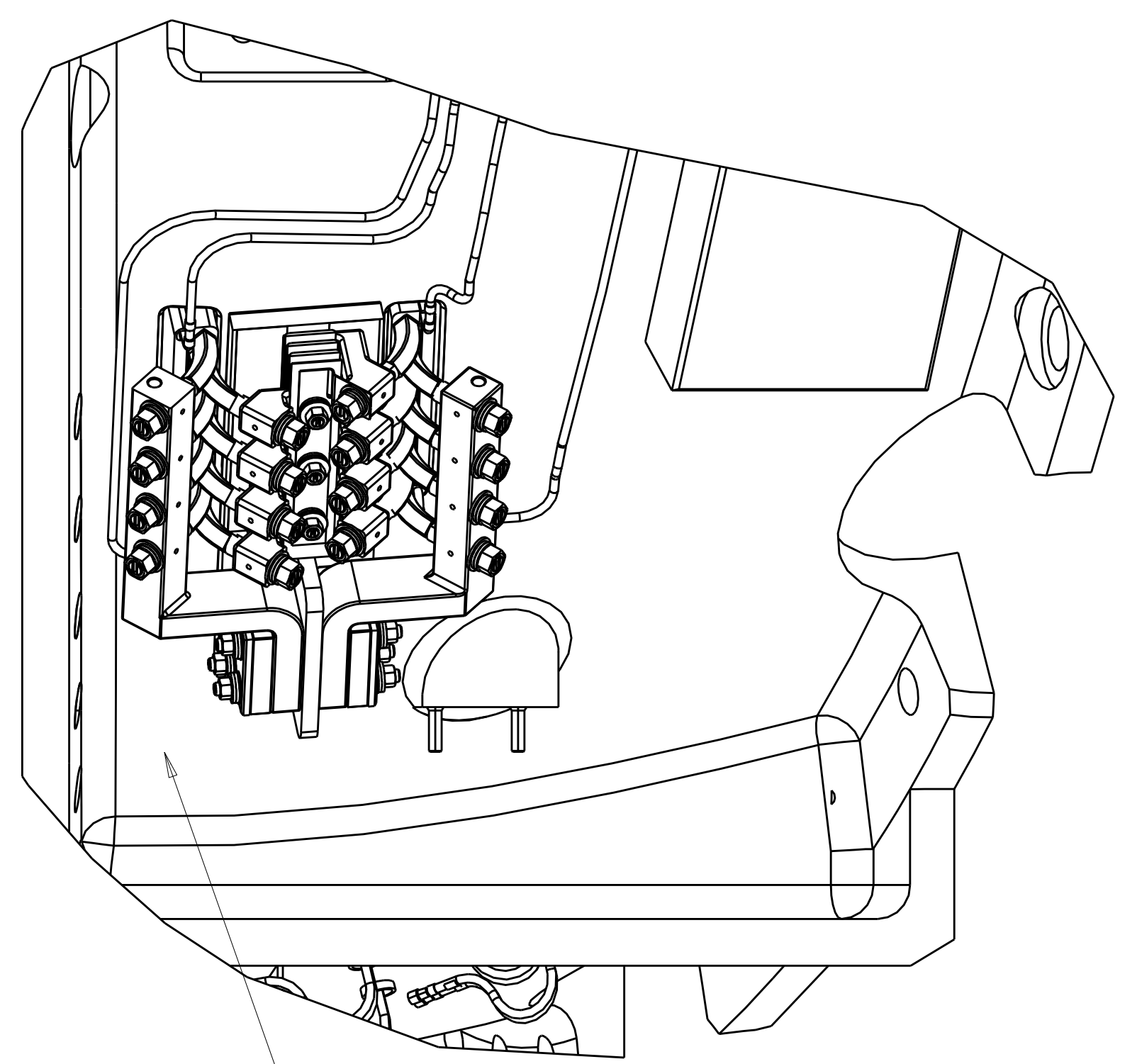


- TC-A05
- TC-A06
- TC-A07
- TC-A08
- TC-A09
- TC-A10
- TC-A11
- TC-A12

SCALE 0.250



DETAIL A
SCALE 1.000



PARTIAL RIGHT VIEW
SCALE 0.250

TC-A13 & TC-A14 (ITEM 36) NOT SHOWN. TO BE LOCATED ON LEADS AND FIELD ROUTED AT ASSEMBLY

THERMOCOUPLE CHART			
NO.	LABEL	LOCATION	LEAD LENGTH TO CRYOSTAT (IN)
1	TC-A01	INBOARD LOWER SUPPORT	218
2	TC-A02	INBOARD T/C HOLE	194
3	TC-A03	INBOARD T/C HOLE (DUPLICATE)	194
4	TC-A04	INBOARD UPPER SUPPORT	130
5	TC-A05	COOLING LINE OUTLET 1	74
6	TC-A06	COOLING LINE OUTLET 2	74
7	TC-A07	COOLING LINE OUTLET 3	74
8	TC-A08	COOLING LINE OUTLET 4	74
9	TC-A09	COOLING LINE OUTLET 5	74
10	TC-A10	COOLING LINE OUTLET 6	74
11	TC-A11	COOLING LINE OUTLET 7	74
12	TC-A12	COOLING LINE OUTLET 8	74
13	TC-A13	LEADS	120
14	TC-A14	LEADS	120

Oak Ridge National Laboratory
 managed for the DEPARTMENT OF ENERGY under
 U.S. GOVERNMENT contract DE-AC05-00OR22725
 UT-BATTELLE, LLC, Oak Ridge, Tennessee

UT-BATTELLE

NATIONAL COMPACT STELLARATOR EXPERIMENT

MCWF TYPE "A"
 FULL COIL ASSEMBLY

VERSION NO.	PLANT	BLDG	FL	SHT OF	TYPE	CLASS
69+	ORNL	5700	3	3	S	U
RELEASE LEVEL	SEI40-101					REV
WIP						0

H
G
F
E
D
C
B
A

SEI40-101

A